

NATURE OF DAMAGE AND ITS MANAGEMENT OF FALL ARMYWORM (*SPODOPTERA FRUGIPERDA*) ON MAIZE CROP A REVIEW

Comment [WU1]: Consider rephrasing e.g Nature of damage of fall armyworm (*Spodoptera frugiperda*) on Maize Crop: A review.

Abstract:

Fall armyworm, *Spodoptera frugiperda* (J.E. Smith) (Lepidoptera: Noctuidae), is a polyphagous pest which is arising as one of the major threats to agricultural crop production. It has around 80 host species that cause severe damage to cereals and vegetable crops. This pest was first discovered in Africa (2016) and first collected and reported in Madhya Pradesh at Research Farm RVSKVV, Gwalior of the August Month in 2019-20. The *S. frugiperda* larval are found in newly leaves, leaves whorls, tasseling or cobs according to their growth stages. Scrape leaves, pin hole symptoms due to early larval stage and pane window symptoms whereas in the later vegetative stages due to larval of fall armyworm, damage results in skeletonized leaves and seriously windows whorls. Whereas whether condition for insects firm is good for pest could cause about 100% losses in maize crop but not control in the time.

Comment [WU2]:

Comment [WU3]: Spelling checks and grammar

Normal investigation, push and pull method, light traps are used, common botanicals are available of neem locally available materials of ash & several suggested chemical pesticides with dose can be used for the management of *S. frugiperda*. In present a vital requirement for development of ecofriendly environment, cost-effectively and collectively adopted IPM strategies to easily the impacts of the *S. frugiperda*.

Comment [WU4]: Consider rephrasing this whole paragraph to improve on coherence
Are these management options for the pest of what?
Improve on Objectivity SMART

Keywords:

Maize, Fall Armyworm, Nature of Damage, Management, Madhya Pradesh

Introduction:

The fall armyworm, *S. frugiperda* (J. E. Smith) are found in order Lepidoptera and family Noctuidae also know as armyworm, *Spodoptera frugiperda*, it is polyphagous pests (Todd and Poole 1980; Cock *et al.*, 2017). *Spodoptera frugiperda* is an insect native in tropical and subtropical areas of the America. The larval of fall armyworm feed on the leaves, stem and vegetative parts large than 100 crop species (CABI, 2017). It emerged are sudden in Africa in early on 2016, whereas, first reported in central and western Africa (Goergen *et al.*, 2016). Within a year fall armyworm was reported in most of Sub-Saharan Africa (Day *et*

Comment [WU5]: It looks too long, please consider trimming
Again improve on spellings
Add more in text references to show wide reading

al., 2017). It is economically pest asre able of aggressive food security in the world (Devi, 2018).*Spodoptera frugiperda* can be migrating to wide range in geographically areas (Goergen *et al.*, 2015, 2018 and Sharanbasappa *et al.*, 2018). It is one generation aggregation of adult moths can migrate more than 500kilometres (300 miles) with help of air current before they are ready for oviposition (FAO 2017; Pogue, 2002; Prasanna *et al.*, 2018). It is very extremely attacks on crop of gramineae family i.e.Maize (Andrews, 1980). Larger than eightyvarious host plant species are also initiate to be attacked by thepests (CABI, 2018).This pest attack mainly whorl part of Maize crop and bore in the cobs of later stage of the crops which reduced the yield, quantity and quality of the maize crop (FAO, 2018). Entry of the pest of fall armyworm in India was first reported in the month of May 2018 on the maize field at CoA, UAHS, Shivamogga, Karnataka after than various state of India i.e. TN, AP, MH and Telengana in the crop of Sugarcane and Bihar, CG, Karnataka, Odisha, Gujarat and WB in the maize crop fields (CABI, 2019).The maize a main crop of farmers of hilly areas production of 86 per cent has been used for consumption of human and animal feed for feed industries of tarai areas production of 80 per cent in the tarai in the terai is used for poultry and animal feed (Gurung *et al.*, 2011; KC *et al.*, 2015).

In India, Maize is the 3rd important food crops after than Rice and Wheat. In India production of 22.23 MT mainly during Kharif which covers 80% areas. In India contributes almost nine percent NFB. It is cultivated many ted throughout in the year in various state of the various country for various purposes of grain, green cobs, sweet, baby, pop corn and fodder in the Urban areas.

The main growing ststes of contributes more than 80 per cent of the total production of maize crop are AP, Karnataka, Rajasthan, MH, Bihar, UP, MP and HP apart from these states maize is also grown in J&K and North-Eastern states. Therefore, the maize crop has appeared as mainn crop in the non-traditional areas i.e. peninsular in India as the state i.e.AP which ranks 5th in area and highest production (4.14 MT) and productivity (5.26 t ha⁻¹) in the country although the productivity in some of the districts of AP is more or equal to the USA (Anno, 2012-13).Which supplyutmost in terms of area possess a great hazard hence everyone should be disturbed of control and management of *S. frugiperd*.

Systemic Position of FAW:

Kingdom: Animalia

Phylum: Arthropoda

Class: Insecta

Order: Lepidoptera

Family: Noctuidae

Genus: *Spodoptera*

Species: *frugiperda*

Identification of FAW:

The adult female laid 100-200 eggs on the undesirable and upper side of the leaves and covered by silky scales from female stomach (Sharanbasappa *et al.*, 2018) and fecundity of more the 2000 eggs every one female. Hatching period of 2 to 5 days in optimum whether condition. Fall armyworm larval are first green in colour after than black with four black dots forming a square on the last 8th segment on the larval (CABI, 2019). The full mature larval seen an inverted “Y” shaped structure with white in colour on the head and when exanimate closely the epidermis of larval is rough and granular in texture (Prasanna *et al.*, 2018 and CABI, 2017). The larval head dark in colour with three light yellowish bands down the back (CABI, 2019). Caterpillar has four pair’s false abdominal legs (CABI, 2019). Adult female moth is Slightly larger than male (FAO, 2018). A full developed larval size 4 to 5 cm (CABI, 2019). Pupation on Soil, cobs and plant debris with reddish brown in colour. Adult male moths are whitish patches at the lower outer edges while whitish with dark decoration are show on inner surface of wings. The female forewings are less marking uniform range with grayish brown inn colour. In Larval of *S. frugiperda* was found of cannibalism and average mortility of 40 per cent when maize crops are infested with 2 to 4 stage of larval over a day period (Chouhan *et al.*, 2000). This insect pest larval highly active and fast feeding habitat and more damage of very few times.

Nature of Damage and Damage symptoms:

Regular fecundity of the pest at suitable for weather conditions are estimated to result a difficult damage to the maize crops (Goergen *et al.*, 2016), depended on the growth phase of the maize crop, larval are initiate on young on leaves, whorls portion of leaves, tasseling or cobs of maize crop (Goergen *et al.*, 2016). Larvae are voracious in habitat causes vast injury by

Comment [WU6]: Consider rephrasing sub – topic leave one damage

defoliating plant. The larvae of fall armyworm scrape green matter of leaves and showed pin head holes stem borer attack and panewindows feeding damaging symptoms of European corn borer attack (Sisay *et al.*, 2019). But later stage of crop damage results in skeletonization on leaves and shows high windows symptoms of whorls portion of plant (Goergen *et al.*, 2016).

All plant portions are devoured by the larva of *S. frugiperda*. The full mature stage of larva found in the whorls of later host plants can feed cob or kernels on maize crop, reduced yield, quality and quantity of host plant (Abrahams *et al.*, 2017; Capinera, 2017). While young leaves tissue is appropriate for survival and development of insect pest of maize whereas unsuitable of mature crop stage of host plant (Pannuti *et al.*, 2015).

In Nepal pose favorable weather conditions for pest development so, it is pest might cause Average 100 per cent loss in maize crop it is not managed (CABI, 2019). Hruska and Gould recorded *S. frugiperda* highly damage cause on maize crop and heavy yield losses up to 70 per cent (Hruska and Gould, 1997).

Control methods of fall armyworm:

Investigation:

The first showed that the seedling phase of maize. At nursery to start early whorl phase of the host plant (3-4 weeks after appearance). Act can be taken if 5 per cent hosts are damaged. At middle whorl portion to late whorl portion phase (5-7 weeks after appearance) - Act can be taken condition 10 per cent whorls are newly damaged in middle whorl phase and 20 per cent whorl damaged in later whorl phase. On tassels and post tassels (silking phase or milky stage of the crop) - Do not use chemical insecticides. However 10 per cent cobs damaged require several ecofriendly action (collection and destruction of egg or larvae). (ICAR, 2019).

Cultural:

It is a major component key of the fall armyworm management strategy. In winter killed by exposing larval or pupal with the upper soil surface and lowers the chance of incidence of the fall armyworm. A mechanical and cultural practice engage preventing later planting of host plant cobs are highly infested due to fall armyworm than the early stage of planting (Bilbo, 2019). Intercrop maize and crop rotation recommended minimizing infestation

Comment [WU7]: Consider adding the term scouting and method employed to scout effectively

of fall armyworm (FAO, 2018). The managed fall armyworm CIMMYT is looks for the efficient effect method of Push and Pull cropping system which it is measured a vital climate smart technology (Pradhan *et al.*, 2019). CIMMYT are use two non host plant.i.e. Napier-grass (*Pennisetum purpureum*) and Silver leaf Desmodium legumes (*Desmodium uncinatum*) from research control of fall armyworm in Kenya, Uganda and Tanzania cause study confirm superiority of push pull technology for managed of *S. frugiperda*. From the research in control of Fall Army Worm in Kenya, Uganda and Tanzania studies have confirmed superiority of push-pull technology in control of FAW relation to other any non host plant mixing cropping system strategies (Hailu *et al.* in Press).It is provided good soil health and adequate moisture is critical. They are necessary to sown healthy host plant material, which can improved withstand pests infestation and damage (ICAR, 2019).

Physical:

Continuous of monitoring of the pest activity successful achievement of IPM is not possible. Setting light and pheromones traps are found most effective in pest monitoring of *S. frugiperda* (Prasanna *et al.*, 2018). Use of black light traps can also be used to capture adult moths of fall armyworm (Hunt *et al.*, 2001; Qureshi *et al.*, 2006).

Mechanical:

Investigation for damage is special important for this pest because it feed rapid and highly destructive. Hand picking of the egg masses during regular monitoring of the field helpful to manage the pest population in small scale and has been proved somewhat successful (Rwomushana *et al.*, 2018). In Ethiopia, 15 per cent of thefarmers practiced only handpicking for fall armywormcontrol (Kumela *et al.*, 2019).Settin of 5 pheromone traps/ acre and Installation of one light trap/ ha during night hours to monitoring the adult moth activity in and around maize fields. Used15 pheromone traps per acre for mass trapping of the pest (ICAR, 2019) and effective management of fall armywormof maize crop field, the farmers are advised to installation fifty pheromone traps per hectare and lure will be changed after forty days according to (JAU, 2019).

Botanical:

Use of botanical insecticides are mostly in developing countries it is very safer, cheap and ecofrindly than the insecticides but may result in effect of weather conditions, costly, regurgence and pest resistance against pesticides (Arya and Tiwari, 2013). Many

Comment [WU8]: Consider adding more information here

botanical insecticides are used for pest control like *Milletia ferruginea*, Neem products, Jatropha, Tobacco, sawanti and *Croton* proved to be successful to insect pests management (Jirmci, 2013). Similarly the larval of fall armyworm had high mortality when NSKE was used (Silva *et al.*, 2015). A group researchers completed that the *A. ochroleuca* (Papaveraceae) ethanolic extracts caused fall armyworm mortality due to a reduction in feeding and slowed down larval growth (Martinez *et al.*, 2017).

Tobacco extract was reported to have highest larval mortality rate i.e. 66% and *Lippia javanica* (66%) by contact toxicity tests and highest larval mortality by feeding bioassay test was obtained when *L. javanica* (62%) and Tobacco (60%) were used (Phambala *et al.*, 2020). Many plant extracts were used as a botanical insecticide but only few are commercialized and widely used and found to be effective. Neem products and pyrethrin are the very most important widely used products some other products are rotenone, garlic, nicotine, rianodine, quassia and so on (Isman, 1997). Small holder farmers in America use of ash, sand, sawdust or dirt into plant whorls part proved effective management of larval of fall armyworm (FAO, 2018).

Biological:

Use of entomopathogenic fungus of *Metarhizium anisopliae* and *Beauveria bassiana* effective against eggs and second – instar larval of *S. frugiperda* (Komivi *et al.*, 2019). *B. bassiana* caused moderate mortality of 30% to second instar larvae and the egg mortalities caused by *M. anisopliae* was 79.5-87.0% under laboratory conditions. Use of SfMNPV and use of predatory insects and parasitic wasps (parasitoids), use of genetically modified crops containing bacteria of *Bacillus thuringiensis* genes that produce proteins that are toxic to the larval of fall armyworm (Day *et al.*, 2017) are some of the important biological controls. Used of important predatory insects are *Chrysoperla*, lady bird beetles, flower bugs and ants (FAO, 2018). In situ protection of natural enemies by habitat management: increase the plant diversity by intercropping with pulses and ornamental flowering plants which help in buildup of natural enemies. Eggs, larval and pupa of fall armyworm are attacked by several species of parasitoids. Release of egg parasitoids *Telenomus* sp. and *Trichogramma* sp. are recommended for many countries. Augmentative release of *Telenomus rumus* and *Trichogramma pretiosum* @ 50,000 per acre at weekly intervals (ICAR, 2019).

Use of effective control of fall armyworm on maize crop, the farmers are advised to Spray of three sprays of *B. bassiana* 15 WP (2×10^6 cfu/g) @4 kg OR *Nomuraea rileyi* 1.15

WP (2×10^6 cfu/g) @ 3 kg + SfNPV 450 LE 1 lit first at initiation of pest population and subsequent two sprays at 10 day interval (JAU, 2019). Entomopathogenic fungal formulations suitable at 5 per cent damage in seedling to early whorl stage and 10 per cent cob or tasselinfesting with entomopathogenic fungal and Bacteria. Spray of *Metarhizium anisopiae* @ 2.5-3 kg/ha or *Nomuraea rileyi* rice grain (1×10^8 cfu/g) @ 1-1.5 kg/in whorl application at 15-25 days after sowing and 1-2 sprays at 10 days interval of depending on pest infestation and bacteria *Bacillus thuringiensis kurstaki* @ 1.0 kg/ha or 400 g/ acre application (ICAR, 2019).

Chemical:

If seed treatment with Cyantraniliprole 19.8% + Thiamethoxam 19.8% @ 4 ml/kg seed for 2-3 weeks after germination (ICAR, 2019). To manage fall armyworm spray Emamectin benzoate 5% SG @ 5 gm/10 litre of water or Thiodicarb 75% WP @ 10 gm/ 10 litre of water or Spinetoram 11.7% EC @ 10 ml/ 10 litre of water first at initiation of pest infestation and second at 10 days interval (JAU, 2019).

Spodoptera frugiperda can be controlled by applying synthetic insecticides (Blanco *et al.*, 2014, 2010). Chemical insecticide management is not at all economical in case of *S. frugiperda* as frass of this insect may become so highly that it can create a "plug" which reduces the effectiveness of insecticide and may not reach into the whorl where the larvae may be feeding (Day *et al.*, 2017). But, it is essentially extremely severe and/or the plants are under stress infestation. When 75 per cent of the whorl portion of host plants shows infestation sign due to feeding of fall armyworm and larvae are smaller and the host plants are under stress, pesticides may be advisable (CABI, 2019). Chemical insecticides not use at day time as the pest is nocturnal (Day *et al.*, 2017). Threshold levels are not still considered before jumping off to chemical control and this may lead to plant damage, resistance development and also risk to human and environment (Togola *et al.*, 2018). Spray of 5 per cent NSKE or Azadirachtin 1500 ppm @ 5 ml per litre of water at first whorls of host plant in seedling to early whorls phase reduce the hatching per cent of freshly laid eggs of fall armyworm. Spray of emamectin benzoate @ 0.4 gm or Thiamethoxam 12.6% + Lambda cyhalothrin 9.5% EC @ 0.5 ml or Chlorantraniliprole 5% SC @ 0.3 ml per litre of water to manage second and third instars larval stage at 2nd window of middle whorl to later whorl stage. Used of recommended poison baiting to manage later instars larval of fall armyworm at second whorl windows and prepared baiting mixture of 10 kg rice bran + 2 kg jiggery with 2-3 litre of water for 24 hrs to

ferment and add 100 gm Thiocarb just half an hour before applied in the maize field crop. Pesticides control measured not cost effective at third window stage of eight weeks after appearance to tasseling and post tasseling stage of the host plant crop. Advised for farmers' use of hand picking of the larvae of fall armyworm in maize field. All the insecticide spraying should be directed towards whorls and either in the early hours of the day or in the evening time (ICAR, 2019).

Conclusion:

Spodoptera frugiperda has the capability to breed very fast, migration and feeding on the wider host plants, it is very difficult to control measures. But, there are many traditions of managing the pest population as reported in other parts of the world that can potentially be adapted or validated and used in Madhya Pradesh. While the loss estimation of the pest infestation in Madhya Pradesh is not calculated yet (CIMMYT) has been working to managing the pest population in Madhya Pradesh through evaluation of push-pull strategy in which Soybean is cultivated with maize crop. However, single control method is not sufficient to control this pest population; IMP strategies should be considered while fighting against this pest population infestation.

Comment [WU9]: Add in-text references here. Consider explaining about IPM in the document so that you can conclude on it as a strategy to manage the pest.

References:

- Andrews, K.L., 1988. Latin American research on *Spodoptera frugiperda* (Lepidoptera: Noctuidae). Florida entomologist: 630-653.
- Arya, M., Tiwari, R., 2013. Efficacy of plant and animal origin bio products against lesser grain borer, *Rhyzopertha dominica* (fab.) in stored wheat. International Journal of Recent Scientific Research, 4(5): 649-653.
- Anonymous, 2012. Annual Progress Report Kharif Maize 2012.
- Assefa, F., Ayalew, D. 2019. Status and control measures of fall armyworm (*Spodoptera frugiperda*) infestations in maize fields in Ethiopia: A review. Cogent Food & Agriculture, 5(1): 164-1902.

- Bhusal, K., Bhattarai, K., 2019. A review on fall armyworm (*Spodoptera frugiperda*) and its possible management options in Nepal.
- ICAR, 2019. Management recommended of Fall Armyworm on maize crops.
- JAU, 2019. Recommended management practices of Fall Armyworm on maize.
- Bhusal, S., Chapagain, E., 2020. Threats of fall armyworm (*Spodoptera frugiperda*) incidence in Nepal and its integrated management-A review. *Journal of Agriculture and Natural Resources*, 3(1): 345-359.
- Bilbo, T., 2019. Development of *Helicoverpa zea* (Lepidoptera: Noctuidae) in Transgenic Corn Producing Bt. Toxins and Implications for Resistance.
- CABI. 2019. *Spodoptera frugiperda* (fall armyworm).
- CABI. 2017. Invasive species compendium.
- Capinera, J.L., 2017. Fall Armyworm, *Spodoptera frugiperda* (J. E. Smith) (Insecta: Lepidoptera: Noctuidae). Publication# EENY098. Florida (FL): UF/IFAS Extension Service, University of Florida.
- Casmuz, A., Juarez, M.L., Socias, M.G., Muru, M.G., Prieto, S., Medina, S., 2017. Review of the host plants of fall armyworm, *Spodoptera frugiperda* (Lepidoptera: Noctuidae). *Revista de la Sociedad Entomológica Argentina*, 69 (3-4).
- Cock, M.J., Beseh, P.K., Buddie, A.G., Cafá, G., Crozier, J., 2017. Molecular methods to detect *Spodoptera frugiperda* in Ghana, and implications for monitoring the spread of invasive species in developing countries. *Scientific reports*, 7(1): 1-10.
- Davis, T., Day, R., Early, R., Godwin, J., Gonzalez-Moreno, P., Kansime, M., Kenis, M., 2018. Fall armyworm: impacts and implications for Africa.
- Day, R., Abrahams, P., Bateman, M., Beale, T., Clotey, V., Cock, M., Gomez, J., 2017. Fall armyworm: impacts and implications for Africa. *Outlooks on Pest Management*, 28(5):196-201.
- Devi, S., 2018. Fall armyworm threatens food security in southern Africa. *The Lancet*, 391 (10122):727.

- FAO. 2018. Identification guides. Food and Agriculture Organization. 1 pp. English Language
- FAO. 2018. Integrated management of the fall armyworm on maize a guide for farmer field schools in Africa.
- FAO. 2018. Integrated management of the fall armyworm on maize. A guide for farmer field schools in Africa. Rome: FAO.
- Goergen, G., Kumar, L., Sankung, S.B., Togola, A., Tamò, M., 2016. First report of outbreaks of the fall armyworm *Spodoptera frugiperda* (J E Smith) (Lepidoptera, Noctuidae), a new alien invasive pest in West and Central Africa. PLoS ONE, 11(10): 1–9.
- Guragain, M., 2019. Lab report confirms entry of American fall armyworm in Nepal.
- Hailu, G., Niassy, S., Zeyaur, K.R., Ochatum, N., Subramanian, S. 2018. Maize–legume intercropping and push–pull for management of fall armyworm, stemborers, and striga in Uganda. Agronomy Journal, 110(6): 2513-2522.
- Hardke, J.T., Lorenz III, G.M., Leonard, B.R., 2015. Fall armyworm (Lepidoptera: Noctuidae) ecology in southeastern cotton. Journal of Integrated Pest Management, 6(1): 10.
- Heeb, L., Jenner, E., Cock, M.J., 2019. Climate-smart pest management: building resilience of farms and landscapes to changing pest threats. Journal of Pest Science, 92(3): 951-969.
- Hruska, A.J., Gould, F., 1997. Fall armyworm (Lepidoptera: Noctuidae) and *Diatraea lineolata* (Lepidoptera: Pyralidae): Impact of larval population level and temporal occurrence on maize yield in Nicaragua. Journal of Economic Entomology, 90(2): 611-622.
- Isman, M.B. 1997. Neem and other botanical insecticides: barriers to commercialization. Phytoparasitica, 25(4): 339.
- Jirnmci, E., 2013. Efficacy of botanical extracts against termites, *Macrotermes* spp., (Isoptera Termitidae) under laboratory conditions.

- Kalleshwaraswamy, C.M., Maruthi, M.S., Pavithra, H.B. 2018. Biology of invasive fall army worm *Spodoptera frugiperda* (JE Smith) (Lepidoptera: Noctuidae) on maize. *Indian Journal of Entomology*, 80(3): 540-543.
- KC, G., Karki, T.B., Shrestha, J., Achhami, B.B. 2015. Status and prospects of maize research in Nepal. *Journal of Maize Research and Development*, 1(1): 1-9.
- Khan, Z.R., Midega, C.A., Bruce, T.J., Hooper, A.M., Pickett, J.A., 2010. Exploiting phytochemicals for developing a 'push-pull' crop protection strategy for cereal farmers in Africa. *Journal of experimental botany*, 61(15): 4185-4196.
- Khan, Z.R., Midega, C.A., Hutter, N.J., Wilkins, R.M., Wadhams, L.J., 2006. Assessment of the potential of Napier grass (*Pennisetum purpureum*) varieties as trap plants for management of *Chilo partellus*. *Entomologia Experimentalis et Applicata*, 119(1): 15-22.
- Kumela, T., Simiyu, J., Sisay, B., Likhayo, P., Mendesil, E., Gohole, L., Tefera, T., 2019. Farmers' knowledge, perceptions, and management practices of the new invasive pest, fall armyworm (*Spodoptera frugiperda*) in Ethiopia and Kenya. *International Journal of Pest Management*, 65(1): 1-9.
- Martínez, A.M., Aguado-Pedraza, A.J., Viñuela, E., Rodríguez-Enríquez, C.L., Lobit, P., Gómez, B., Pineda, S. 2017. Effects of ethanolic extracts of *Argemone ochroleuca* (Papaveraceae) on the food consumption and development of *Spodoptera frugiperda* (Lepidoptera: Noctuidae). *Florida Entomologist*, 100(2): 339-345.
- MOAD. 2014. Statistical Information on Nepalese Agriculture, Ministry of Agricultural Development.
- MoAD. 2017. Statistical information on Nepalese Agriculture. Monitoring, Evaluation and Statistics Division, Agriculture Statistics section, Ministry of Agriculture Development, Government of Nepal, Singhadurbar, Kathmandu, Nepal.
- NPPO. 2019. NPPO Nepal Declares the invasion of American Fall Armyworm (*Spodoptera frugiperda*) in Nepal.

- Pannuti, L.E.R., Baldin, E.L.L., Hunt, T.E., Paula-Moraes, S.V. 2016. On-plant larval movement and feeding behavior of fall armyworm (Lepidoptera: Noctuidae) on reproductive corn stages. *Environmental Entomology*, 45(1): 192-200.
- Phambala, K., Tembo, Y., Kabambe, V.H., Stevenson, P.C., Belmain, S.R., 2020. Bioactivity of common pesticidal plants on fall armyworm larvae (*Spodoptera frugiperda*). *Plants*, 9(1): 112.
- Pogue, M.G., 2002. A world revision of the genus *Spodoptera* Guenée: (Lepidoptera: Noctuidae).
- Prasanna, B., Huesing, J., Eddy, R., Virginia, R., 2019. Fall Armyworm in Africa: A guide for Integrated Pest Management. Mexico: USAID and CIMMYT.
- Prasanna, B.M., Huesing, J.E., Eddy, R., Peschke, V.M. 2018. Fall armyworm in Africa: a guide for integrated pest management.
- Qureshi, J.A., Buschman, L.L., Throne, J.E., Ramaswamy, S.B. 2006. Dispersal of adult *Diatraea grandiosella* (Lepidoptera: Crambidae) and its implications for corn borer resistance management in *Bacillus thuringiensis* maize. *Annals of the Entomological Society of America*, 99(2): 279-291.
- Reis, L., Oliveira, L., Cruz, I., 1988. *Doruluteipes* Biology and Potential in *Spodoptera frugiperda*. *Pesquisa Agropecuária Brasileira*, 23(4): 333-342.
- Rwomushana, I., Bateman, M., Beale, T., Beseh, P., Cameron, K., Chiluba, M., Godwin, J. 2018. Fall armyworm: impacts and implications for Africa. *Fall armyworm: impacts and implications for Africa*.
- Sapkota, D., Pokhrel, S., 2010. Community based maize seed production in the hills and mountains of Nepal: A review. *Agronomy Journal of Nepal*, 1: 107-112.
- Sarmiento, R.D.A., Aguiar, R.D.S., Aguiar, R.A.S.S., Vieira, S.M.J., de Oliveira, H.G., Holtz, A.M. 2002. Biology review, occurrence and control of *Spodoptera frugiperda* (Lepidoptera, Noctuidae) in corn in Brazil. *Bioscience Journal (Brazil)*.
- Sharanabasappa, D., Kalleshwaraswamy, C.M., Maruthi, M.S., Avithra H.B. 2018. Biology of invasive fall army worm *Spodoptera frugiperda* (J.E. Smith) (Lepidoptera: Noctuidae) on maize. *Indian Journal of Entomology*, 80(3): 540-543.

Sisay, B., 2018. Evaluation of Different Management options of Fall Armyworm (JE Smith)(Lepidoptera: Noctuidae) and Assessment of its Parasitoids in Some Parts of Ethiopia (Doctoral dissertation, Haramaya University).

Sisay, B., Simiyu, J., Malusi, P., Likhayo, P., Mendesil, E., Elibariki, N., Tefera, T. 2018. First report of the fall armyworm, *Spodoptera frugiperda* (Lepidoptera: Noctuidae), natural enemies from Africa. Journal of Applied Entomology, 142(8): 800-804.

Sisay, B., Tefera, T., Wakgari, M., Ayalew, G., Mendesil, E. 2019. The efficacy of selected synthetic insecticides and botanicals against fall armyworm, *Spodoptera frugiperda*, in maize. Insects, 10(2): 45.

Tippannavar, P.S., Talekar, S.C., Mallapur, C.P., Kachapur, R.M., Salakinkop, S.R., Harlapur S.I. 2019. An outbreak of Fall Armyworm in Indian Subcontinent: A New Invasive Pest on Maize. Maydica, 64(1): 10.



Egg laying

Damage with larva

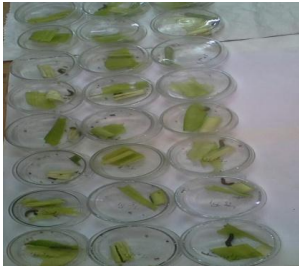
Larva of FAW



Damaged



Visit of Farm Committee



Rearing of Larva



Larva of FAW



Pupa of FAW

Plate 1 : Culture of *Spodoptera frugiperda* and observation of damage in maize crop