

## Seasonal incidence of insect pests of tomato (*Lycopersicon esculentum* Miller)

### ABSTRACT

A field experiment was conducted at Entomology research field, IANS, Deen Dayal Upadhyaya Gorakhpur University, Gorakhpur during *Rabi*, 2022, for studying the seasonal incidence of insect pests infesting tomato. Serpentine leaf miner, aphid appeared during 46<sup>th</sup> SMW and whitefly, jassid during 48<sup>th</sup> SMW, while fruit borer was observed during 2<sup>nd</sup> SMW. Correlation study revealed that Serpentine leaf miner, whitefly, aphid, jassid and fruit borer ~~witnessed~~ ~~showed~~ significantly positive correlation with the maximum temperature and minimum temperature, ~~while~~ Serpentine leaf miner and fruit borer ~~recorded~~ ~~showed~~ negatively non-significant correlation with the ~~morning~~ relative humidity ~~morning~~ and ~~evening~~ relative humidity ~~evening~~, however ~~W~~ whitefly, jassid and aphid ~~population had showed significant~~ negatively ~~significant~~ correlation with the ~~morning~~ relative humidity ~~morning~~ and ~~W~~ whitefly and jassid ~~population registered a shown significant~~ negatively ~~significant~~ correlation with ~~evening~~ relative humidity ~~evening~~ while ~~A~~ aphid ~~incidence had a showed negatively~~ non-significant ~~negative~~ correlation with the ~~evening~~ relative humidity ~~evening~~. However, all the insect pests showed non-significant correlation with the rainfall.

**Keywords:** Population, *Serpentine Leaf Miner*, Whitefly, Aphid, Jassid, Fruit borer, weather parameters, correlation.

### 1. INTRODUCTION

Tomato (*Solanum lycopersicum* L.), belonging to the family Solanaceae is the most important vegetable ~~are~~ commonly cultivated both for fresh market and processing. It ~~was~~ originated in tropical America. It is a significant crop cultivated in tropical and subtropical climate. Tomato fruit comprise water (93.1%), fat (0.3g), ~~m~~, calorie (23), vitamin 'A'(320 I.U), vitamin 'B1'(0.07 mg), ~~gilligram~~, vitamin 'B2' (0.01mg), ~~gilligram~~, carbohydrates (3.6%), nicotinic acid(0.4 mg), ~~gilligram~~, vitamin 'C'(31mg), ~~gilligram~~, fibre (0.7%), calcium(20 mg), ~~gilligram~~, phosphorus (36mg), ~~gilligram~~, protein (1.9%), and iron (0.8 mg), ~~gilligram~~. (Mandloi ~~R.~~, 2013).

Tomato is the third most important ~~vegetable~~ crop in India after potato and onion. After China, India is the country with the highest tomato cultivation and production. In native habitat, tomato is perennial, although often grown outdoors in temperate climate as an annual herb.

Tomato also tops the vegetable in canned products (Chowdhury, 1979). ~~It~~ is also used in salad, ketchup, puree, sauces, and other processed foods. In salad fresh and ripe tomatoes fruits are used. For making pickles green tomatoes are used. Tomatoes are cooked alone or used with other vegetables also.

Tomato yield in India is affected by ~~variety of factors~~. ~~The plant of tomato typically grows to 1-3 metre in height and have a weak stem that frequently sprawls over the ground and veins over other plants. The fruit quality of tomato is severely affected by~~ a range of insect pests infesting at various stages of crop growth i.e., from the time of planting until the fruit is harvested. Different parts of the tomato plant offer food, shelter and reproduction site for insects. ~~Insect can may cause death of the tomato plant and also damage fruits in the form of scarring, tissue destruction and aberration in shape or colour. Fruit is contaminated by insects, insect excreta and insect parts. Insects may introduce decay fruit deteriorating organism in to fruit or can act as vector for many viruses, bacteria and~~

~~several mycoplasmas that cause disorders in growth or death of plant.~~ A total of 41 insect species belonging to 21 families attack the tomato crop (Reddy and Kumar, 2004). ~~There are many insect pests attacking tomatoes have been reported which create havoc by causing both quantitative and qualitative losses to the crop. The tomato agroecosystem is characterized by having few major pests and some minor or secondary pests.~~ The major insect pests that have the most important role in the economic losses of tomato crop are Leaf miner (*Liriomyza trifolii* Blanchard), Whitefly (*Bemisia tabaci* Genn.), Aphid (*Aphis gossypii* Glov), Fruit borer (*Helicoverpa armigera* Hub.), and Jassid (*Amrascabis biguttula* Sh.). The estimated losses to the tomato due to attack of different insect pests have been reported in the range of 30-35% (Anonymous, 2007).

## 2. MATERIALS AND METHODS

The field experiment was conducted during *rabi* season of 2022 for studying the seasonal incidence of insect pests of tomato. The site of the experiment was an Entomology research field, IANS, Deen Dayal Upadhyaya Gorakhpur University, Gorakhpur, (Uttar Pradesh, India), (latitude 26.7479° N and longitude 83.3812° E) with an altitude of 75 meters above the mean sea level. During the study, tomato variety Lakshmi was grown on a plot size of 3.75 x 4.20 m with 75 cm row spacing and 60 cm plant to plant distance which was replicated thrice. All the recommended horticultural practices were fulfilled as per the scientific suggestions. The crop under investigation was exposed to natural pests' infestation and kept pesticide-free throughout the trial. Observations started with the second metrological week of transplanting and continued till the final crop harvest or final disappearance. The population of the pest was recorded from the tagged five plants at weekly interval. Observation of the population of whitefly (*Bemisia tabaci* Genn.), aphid (*Aphis gossypii* Glov.), jassid (*Amrascabis biguttula* Sh.) was done by counting the number of pests and for serpentine leaf miner number of mines were counted on two upper, two middle and two lower leaves of the plant canopy. For fruit borer, larval population was counted on five tagged plants. The data of mean population of pests was correlated with max. temp., min. temp., ~~rh~~ morning and ~~rh~~ evening relative humidity and rainfall.

## 3. RESULTS AND DISCUSSION

The incidence of insect pests of tomato was studied during Rabi, 2022. The ~~incidence study revealed that of~~ the five insect pests ~~infesting the crop which are viz.~~ Serpentine Leaf miner (*Liriomyza trifolii*), Whitefly (*Bemisia tabaci*), Aphid (*Aphis gossypii*), Fruit borer (*Helicoverpa armigera*) and Jassid (*Amrascabis biguttula*). ~~The incidence of these pests~~ started from vegetative stage, after two weeks of transplanting and continued till the harvest whereas the incidence of fruit borer ~~was~~ started at fruiting stage and was observed till the final harvest. The observations ~~on the incidence of these insects was recorded as mean population and are~~ represented in (Table 1) with meteorological data and ~~the~~ correlation coefficient of pests population with abiotic factors are ~~re~~presented in (Table-2).

### 3.1 Serpentine Leaf miner (*Liriomyza trifolii* Burgess)

Serpentine leaf miner ~~damage~~ was first observed during third week of November 2022 during vegetative stage of the crop. ~~The insect was identified as major deteriorator of plant leaves. It is apparent from the data that~~ the serpentine leaf miner was present for the whole cropping period from transplanting to the final harvest. The least population of leaf miner (3.27 live mines plant<sup>-1</sup>) was observed during the third week of November and the highest population (26.87 live mines plant<sup>-1</sup>) of serpentine leaf miner was observed in third week of March. Present findings are in accordance with Marcano and Issa (2000), Chaudhary *et al.*, (2001), Asalatha (2002), Reddy and Kumar (2004), ~~they all who~~ reported *Liriomyza* spp. as a major pest in tomato. Shinde ~~S.~~ (2007) also reported the presence of this pest on tomato crop throughout the cropping season.

Correlation coefficient ~~between among~~ serpentine leaf miner infestation and metrological parameters exhibited significantly positive correlation with the max. temp. (0.504) and min. temp. (0.647) whereas it exhibited negatively non-significant correlation with the rh morning (-0.255) and rh evening (-0.410) and shown positively non-significant correlation with the rainfall (0.0.344). These findings are partially in agreement with Kachave *et al.*, (2020) revealed that the max. temp. had significant role on number of mines and rainfall is positively correlated with the number of mines, Ravipati *et al.*, (2020) reported that min. temp. has significant ~~influence on role on~~ leaf miners and

**Comment [j1]:** No details regarding the scope of the present work and its objectives

**Comment [j2]:** Citations for the methodology adopted may add more scientific value. Without which, it seems the methodology is arbitrary.

**Comment [j3]:** Expand

**Formatted:** Font: Not Italic

**Formatted:** Font: Not Italic

**Comment [j4]:** Expand

**Comment [j5]:** Where from the weather data was obtained? Indicate the source

**Comment [j6]:** Details regarding statistical analysis missing

morning and evening relative humidity had non-significantly negative impact on *L. jiomyzatrifolii* population. Choudhary and Rosaiah (2000) reported that evening rh was negatively correlated with incidence of *L. trifolii*.

### 3.2 Whitefly, (*Bemisia tabaci* Genn.)

Whitefly was first noticed during first week of December 2022. The peak population (10.93 whitefly plant<sup>-1</sup>) in second week of march and least population (0.53 whitefly plant<sup>-1</sup>) was recorded during the third week of December. After the first appearance the pests was active till the final harvest. The present data was in accordance with Kumar *et al.*, (2019), who revealed that the population reached peak in second week of March. However, Dhatonde *et al.*, (2014) and Indirakumar *et al.*, (2016) reported the peak population of whitefly during the month of January. This finding contradicts with the present results. The difference in the incidence of whitefly might be because of the difference in climate conditions, field conditions and date of transplanting.

Correlation coefficient of whitefly exhibited negatively significant correlation with the rh morning (-0.516) and rh evening (-0.503) while with other metrological parameters such as max. temp. (0.548) and min. temp. (0.703) it showed significantly positive correlation and positive non-significant relation with rainfall (0.231) has been observed. The present results are in agreement with Kumar *et al.*, (2019), who observed a significant positive correlation with max. and min. temperature and a significant negative correlation with morning and evening relative humidity. Indrakumar *et al.*, (2016), Dhaka and Pareek (2008), Shahnaz *et al.*, (2006) who reported a significant positive correlation with max. and min. temp. and a significant negative correlation with rh morning and rh evening rainfall contradicts the present results.

### 3.3 Aphid, (*Aphis gossypii* Glover)

The aphid population commenced first during the vegetative stage of the crop in third week of November 2022. The aphid was active till the final harvesting of the tomato fruits. The lowest population (0.53 aphids' plant<sup>-1</sup>) was observed in the third week in November whereas the highest population (8.13 aphids' plant<sup>-1</sup>) was recorded during second week in March. Hath and Das (2004) recorded maximum *A. gossypii* population on during the first week of March

Formatted: Font: Italic

Association of aphids was recorded positive with the rainfall (0.197), significantly positive with maximum temperature (0.501) and minimum temperature (0.670) whereas it showed negatively significant correlation with the relative humidity morning (-0.543) and negatively non-significant correlation with the relative humidity evening (-0.467). Present findings are partially in accordance with the Chakraborty-K. (2011) who reported that aphid population was significantly positive correlated with maximum temperature and minimum temperature whereas morning relative humidity morning is was significantly negative correlated and rainfall was is positively non-significant correlated. Wade *et al.*, (2020) reported non significant negative correlation between relative humidity negatively non significantly correlated with and pest population, Kachave *et al.*, (2020) reported that maximum temperature was positively significantly correlated and morning relative humidity morning was showed significantly negatively correlation with the pest population whereas non-significant role of rainfall on pest population.

### 3.4 Jassid, (*Amrascadevastanshida*)

Jassid was first observed during the First week of December. After its initial infestation it is seen until final fruit picking. The maximum population (9.27 jassid plant<sup>-1</sup>) was observed during third week of March along with minimum population of (0.27 jassid plant<sup>-1</sup>) in first week of December.

Jassid population had significantly positive correlation with the maximum temperature (0.575) and minimum temperature (0.705) and positive correlation with the rainfall (0.320). However it showed negatively significant correlation with the relative humidity morning (-0.575) and relative humidity evening (-0.539). The above data of positively significant maximum temperature and negatively significant relative humidity morning and relative humidity evening match with Sarukh *et al.*, (2017) and hence their results strongly supports the present findings. While other parameters differ, it may be due to different climatic conditions, field conditions and sowing date.

### 3.5 Fruit borer, *Helicoverpa armigera* Hub. (Lepidoptera: Noctuidae)

The larva was first observed during second week of January 2023 at the fruiting stage of the crop and remain active till the final picking of tomato fruits. The maximum fruit borer population (2.07 larvae plant<sup>-1</sup>) was observed during fruiting stage in second week of March. Rudenko *et al.*, (2001), Chaudhari *et al.*, (2001), Reddy and Kumar (2004) and Mandal (2012). They all reported that *H. armigera* had been a major insect pest of tomato.

**Comment [j7]:** Why these citations here? No mention about weather parameters?

Fruit borer population expressed positive correlation with rainfall (0.196) and positively significant with maximum temperature (0.529) and minimum temperature (0.631). However, it has negatively non-significant correlation with relative humidity morning (-0.422) and relative humidity evening (-0.482). Partially similar result was reported by Wade *et al.*, (2020) who reported the non-significant negative correlation between larval population and relative humidity morning and relative humidity evening were negatively non significantly correlated. Singh, K. (2013) showed that maximum temperature and minimum temperature exhibited positive and significant impact on enhancing the larval population build up. Kachave *et al.*, (2020) recorded the relationship between fruit borer incidence and maximum temperature and recorded significantly positive correlation. Whereas the negatively non-significant with relative humidity morning. Whereas Nadaf and Kulkarni (2006) revealed that Maximum temperature showed significantly positive relation with incidence of *H. armigera* larvae.

**Table1. Seasonal incidence of insect pests of tomato (*Solanum lycopersicum*) and metrological data**

S.N.	SMW	Temperature(°C)		Relative humidity %		RF (mm)	APHID	LEAF MINER	JASSID	WHITEFLY	FRUIT BORE
		Max Temp	Min Temp	RH I	RH II						
1	46	27.86	13.47	84.86	35.00	0.00	0.53	3.27	0.00	0.00	0.00
2	47	29.33	12.39	83.43	38.86	0.00	0.87	3.33	0.00	0.00	0.00
3	48	27.39	11.91	88.14	40.00	0.00	0.93	4.73	0.27	0.73	0.00
4	49	25.73	11.17	83.57	45.57	0.00	1.53	4.27	0.53	0.67	0.00
5	50	24.50	10.34	83.29	52.14	0.00	1.66	3.87	1.73	0.53	0.00
6	51	23.84	11.43	87.14	49.00	0.02	2.93	3.73	2.73	1.33	0.00
7	52	20.11	9.04	82.43	53.00	0.00	2.87	3.33	2.47	1.87	0.00
8	1	12.44	9.14	83.86	74.29	0.00	2.93	3.93	1.13	0.93	0.00
9	2	15.89	7.57	85.57	67.14	0.00	3.33	3.47	3.33	3.73	0.47
10	3	21.80	7.36	83.71	46.14	0.00	2.93	4.47	4.07	4.07	0.73
11	4	23.96	12.70	85.14	54.86	0.00	3.27	6.73	3.87	4.53	0.67
12	5	22.91	11.97	86.14	55.00	0.00	3.13	8.87	4.73	5.13	1.07
13	6	26.17	12.01	83.00	41.43	0.00	4.07	10.53	5.27	5.87	1.13
14	7	26.50	11.57	80.29	41.29	0.00	5.13	10.27	6.27	4.67	1.53
15	8	29.73	14.90	81.57	35.43	0.00	6.07	14.93	6.53	6.73	1.47
16	9	30.70	16.06	78.29	37.14	0.00	7.07	16.27	8.20	7.40	1.67
17	10	31.76	17.03	73.29	30.00	0.00	8.13	21.33	7.93	9.87	2.07
18	11	30.54	17.69	80.71	39.14	0.00	6.47	26.87	8.07	10.93	1.73
19	12	30.94	16.86	82.57	37.43	0.00	6.07	20.93	9.27	8.53	1.53
20	13	32.16	18.24	64.43	27.14	0.29	6.87	16.73	8.53	9.80	1.87
21	14	35.99	19.54	56.14	14.57	0.00	6.27	13.33	9.13	8.53	1.27

**Comment [j8]:** No statistical analysis

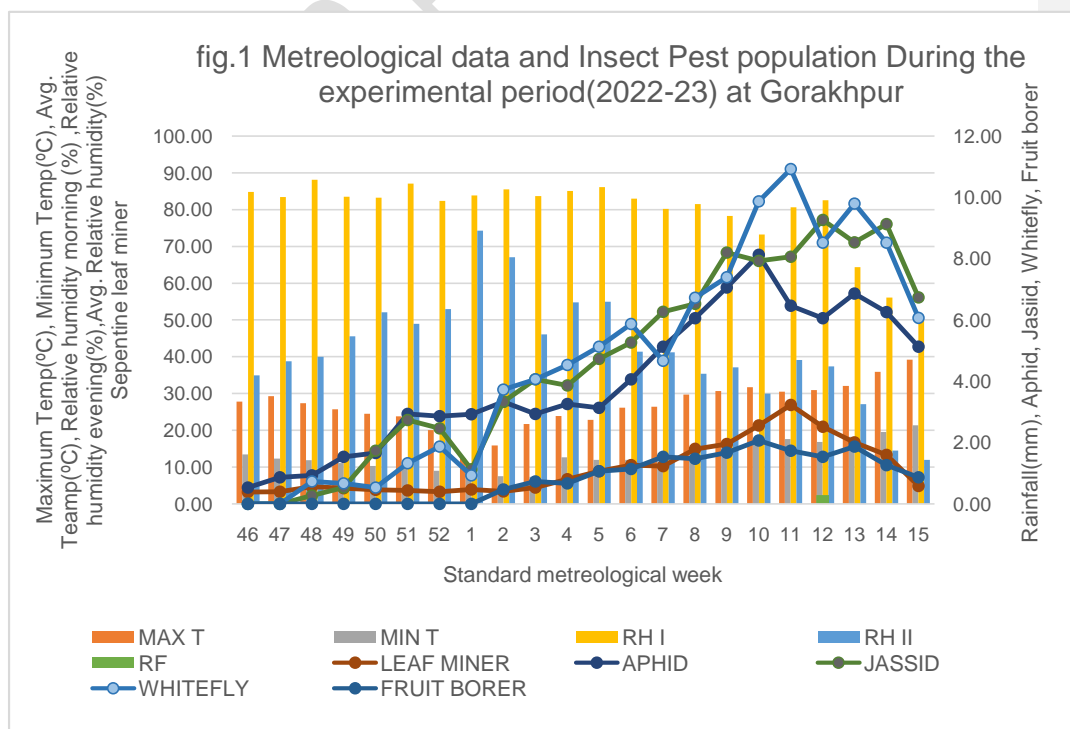
**Comment [j9]:** Units of observation to be included

**Comment [j10]:** What is RH I? What is RH II??

Table 2. Correlation coefficient (r) of insect pests of tomato with meteorological parameters

Meteorological parameter	Leaf miner	Whitefly	Aphid	Jassid	Fruit borer
Max. Temp(°C)	0.504	0.548	0.501	0.575	0.529
Min. Temp(°C)	0.647	0.703	0.670	0.705	0.631
RH (Morning)	-0.255 <sup>NS</sup>	-0.516	-0.543	-0.575	-0.422
RH (Evening)	-0.410 <sup>NS</sup>	-0.503	-0.467 <sup>NS</sup>	-0.539	-0.482
Rainfall(mm)	0.344 <sup>NS</sup>	0.231 <sup>NS</sup>	0.197 <sup>NS</sup>	0.320 <sup>NS</sup>	0.196 <sup>NS</sup>

Comment [j11]: No need for this figure as it is a simple repetition of Table 1 & the scale of measurement may not be uniform in the Y axis



#### 4. CONCLUSION

Serpentine Leaf miner (*Liriomyzatrifolii*), Whitefly (*Bemisiatabaci*) Aphid (*Aphis gossypi*), Fruit borer (*Helicoverpaarmigera*) and Jassid (*Amrascabiguttulabiguttula*) were found to be major pests on Lakshmi variety of tomato. The peak activity of SLM (26.87 mines per six leaves) was recorded during 11th SMW. Whitefly (10.93 per plant) reached its peak activity during 11th SMW. Aphid(8.13 per plant) population reach its highest population in 10th SMW. The jassid population (9.27 per plant) was found maximum in 12th SMW. Maximum number of fruit borer larva(2.07 per plant) were found in 10th SMW.

**Comment [j12]:** Critical conclusion is needed rather than simply presenting the observations

#### REFERENCES

Anonymous, (2007). IPM strategies for tomato and cabbage, extension folder, *National centre for integrated pest management* (ICAR, Pusa campus, New Delhi 110012).

**Comment [j13]:** Journal names... to be given in full or in abbreviated form uniformly as per this specific journal format

**Comment [j14]:** Incomplete...No page number

Asalatha, R. (2002). Seasonal activity and bio efficacy of some ecofriendly insecticides against the serpentine leaf miner *Liriomyzatrifolii*. M.Sc. (Ag) Thesis, JNKVV, Jabalpur.

**Comment [j15]:** Page number

Chakraborty, K. (2011). Incidence of aphid *Aphis gossypii* Glover (Hemiptera: Aphidae) on tomato crop on agro climatic condition of north part of west Bengal, India. *World Journal of Zoology* 6(2):187-191.

**Comment [j16]:** Check spelling

Chaudhuri, N., Deb, D.C. and Senapati, S.K. (2001). Assessment of loss in yield caused by pest complex of tomato under terai region of west Bengal. *Res on crop.* 2(1):71-79.

Choudhary, D.P.R & Rosaiah, B. (2000). Seasonal occurrence of *Liriomyzatrifolii* (Burgess) (Agromyzidae: Diptera) on tomato crop and its relation with weather parameters. *Pest management and Economic zoology*, 8(1), 91-95.

Chowdhury, B. (1979). *Vegetables (Sixth Revised Edn.)*. The Directors of National Book Trust, New Delhi, India. p.45.

Dhaka, S.R. and Pareek, B.L. (2008) Weather factor influencing population dynamics of major insect pests of cotton under semi-arid Agro ecosystem. *Indian Journal of Entomology*, 70(2):157:163.

Dhatonde, J.A., Pandya, H.V., Raut, S.B. and Patel, S.D. (2014). Seasonal abundance of jassid and whitefly on Brinjal (*Solanum melongena* L.) in relation to major abiotic factors. International Journal of Plant Protection.7(1):257-259.

Hath, T.K. and Das, B.R. (2004). Incidence of insect pests in late planted tomato under terai agroecology of west Bengal. Environ. Ecol. 22(1): 136-140.

Indrakumar, K., Devi, M. and Loganathan, R.(2016) Seasonal incidence and effect of abiotic factors on population dynamics of major insect pests on brinjal crop. International Journal of plant protection.9(1):142-145.

Kachave, D.R., Sonkamble, M.M. and Patil, S.K. (2020). Population dynamics of major insect pests to tomato, *Lycopersicon esculentum* (Miller).Journal of Pharmacognosy and Phytochemistry.9(3):344-348

Kumar, P., Naqvi, A. R., Meena, R. S., & Mahendra, M. (2019). Seasonal incidence of whitefly, *Bemisia tabaci* (Gennadius) in tomato (*Solanum lycopersicum* Mill). Int. J. Chem. Stud, 7, 185-188.

[Mandal 2012??](#)

Mandloi, R. (2013). Study on seasonal incidence of insect pest complex of tomato (*Solanum lycopersicum*L.) and their management with phytoextracts. M.Sc. Agriculture (Entomology) Thesis, submitted to Jawaharlal Nehru Krishi Vishwa Vidyalaya, Jabalpur.

Marcano, R. and Issa, S. (2000). Spatial and vertical distribution of *Liriomyza trifolii* on tomato. Boletín de Entomología Venezolana 8(1):115-122.

Nadaf, A.M. and Kulkarni, K.A. (2006) Seasonal incidence of fruit borers, *Helicoverpa armigera* (Hubner) and *Spodoptera litura* (Fabricius) on chilli in Dharwad, Karnataka. J. Agric. Sci. 19(3): 549-552.

Ravipati, N.S.N., Shukla, A. and Sahu, B. (2021). Management of American serpentine leaf miner *Liriomyza trifolii* (Burgess) on tomato. Indian journal of entomology 83(2):253-256.

Reddy, N.A. and Kumar, C.T.A (2004). Insect pests of tomato, *Lycopersicon esculentum* Mill. In eastern dry zone of Karnataka. Insect Environ.10(1):40-42.

Formatted: Indent: Left: 0", Hanging: 0.5"

Formatted: Font: Italic

Formatted: Font: Italic

Comment [j17]:

Comment [j18]:

Comment [j19]: Missing reference

Comment [j20]: Page number

Comment [j21]: Check with text ..... 2020 or 2021

- Rudenko, N.E., Zubanov, A.P., Sherbinin, B.H. and Chalenko, V. V (2001). Pest control by the pneumatic method. *Zeschita Rastenii*:10-16
- Sarukh, P.L., Mutkule, D.S., Karjule, A.G. and Patil, P.B. (2017). Seasonal incidence of sucking insect-pests of tomato (*Solanum lycopersicum*L.). *Progressive Research- An international Journal*.12(3):342-344.
- Shahnaz, E., Kumar, K., Razdan, V.K., Tewari, A.K. and Singh, (2006) B. Host Range and seasonal incidence of tomato leaf curl disease in Sub-Tropics of Jammu. *Environ. Ecol.* 24:302-305.
- Shinde, S. (2007) Bio efficacy and dissipation of residue of some popular insecticides in/on tomato (*Lycopersicon esculantum Mill.*). M.Sc. (Ag) Thesis, Indira Gandhi Krishi Vishwavidyalaya, Raipur, pp:18.
- Singh, K. (2013) Seasonal abundance of fruit borer, *Helicoverpaarmigera*(Hubner) and its impact on marketable fruit production in tomato, (*Lycopersicum esculentum* (Mill.)). *Agric. Sci. Digest*, 33(4):247-252.
- Wade, P.S., Wankhede, S.M., Hatwar, N.K., Shinde, B.D. and Sanap, P.B. (2020). Seasonal incidence of major pests infesting tomato (*Solanum lycopersicum* L.). *Journal of Entomology and zoology studies*. 8(3):1546-1548.