

Original Research Article

Qualitative Analysis of the Cooling Potential of the Streetside Vegetation of Kharagpur, West Bengal, India

ABSTRACT

Aims: To study the impact of orientation on the cooling potential of the street side vegetation in Kharagpur, West Bengal, India.

Place and Duration of Study: The study was conducted in Kharagpur, West Bengal, India. The data was collected during the months of April-June, 2023.

Methodology: A suitable site was chosen for collecting the primary data through an instrument survey. Ambient temperature, surface temperature and solar radiation data was collected from the thirteen cross-sections marked across the site. As part of the preliminary data processing, relative variations of ambient temperature, surface temperature and the solar radiation attenuation was calculated. The values pertaining to these three secondary parameters were used to form matrices corresponding to each of the trees of each of the cross-sections. These matrices were then compared with their corresponding matrices to estimate which side exhibited a higher cooling potential. Besides, a colour-coded matrix was also generated from the calculated shade index to evaluate the amount of incident solar radiation blocked by each of these trees.

Results: This study corroborates the previous findings that the shade providing trees can alter the microclimate of the area. Besides, it was also observed that the Northern pavements of the east-west oriented streets are cooler than the Southern pavement. Furthermore, it was also noticed that if the crown of the tree is present at a greater height from the ground, then lower solar angle results in less blockage of the incident solar radiation. Also, it was evident that a higher density of tall, shade providing trees, maximally block incident solar radiation on a street.

Conclusion: This study can help in understanding the pattern of cooling potential of the street side vegetation in a warm and humid climatic zone like Kharagpur so that the plantation can be planned judiciously.

Keywords: Qualitative matrix analysis, shade index, urban heat island, colour-coded matrix, cooling potential

1. INTRODUCTION

The urban heat island (UHI) effect refers to the phenomenon whereby urban air temperatures are greater than the surrounding rural areas. The difference in air temperatures between the urban and rural areas, referred to as the UHI intensity, has been constantly rising [1], and this has become a growing concern for climate scientists and urban planners. Hence an important goal in urban planning and climate science research is to devise methods to mitigate the UHI effect.

Previous research has suggested that microclimatic planning and design can ameliorate the negative effects of global climate change [2]. Scientists are also of the opinion that strategic planning of urban green infrastructure, such as planting street trees, creating parks, and using green roofs and facades, can help achieve temperature reductions in urban areas. Such strategic planning is also predicted to reduce pollution and enhance habitat biodiversity[3].

Many researchers have concurred that urban green spaces create a cooling effect [4, 5, 6] which lasts up to a certain distance [7, 8]. Additionally, the urban green spaces also reduce the incident solar radiation [9].

However, Zhifeng Wu and Liding Chen claim that the amount of outdoor temperature reduced by the trees is determined by their spatial arrangement [10]. Furthermore, Arpit Shah, Amit Garg and Vimal Mishra have found out that an average urban green space reduces the temperature by about 2.23°C [11]. Whereas, Carlos Bartesaghi-Koc, Paul Osmond, and Alan Peters have come to the conclusion that trees in rows or small clusters with well-irrigated grasses provide the best thermal cooling both at day and night by about 8°C [12].

To sum it up, few researchers are of the opinion that optimum improvement of both indoor and outdoor environment can be influenced by three major physical factors, namely, larger tree quantity, higher canopy density and cool materials [13]. Moreover, some of them have also claimed that increasing the green cover by 20% could lead to a reduction in the surface temperature by 2°C [14]. They further state that this increase in green cover could also reduce a third to half of the expected rise in UHI effect by 2050 [14].

Streets comprise a large part of the outdoor space in an urban area. Hence if the microclimate in and around the streets is controlled, the UHI can be controlled to a great extent. One of the most effective ways to create a cooling effect in the streets is by planting trees along the sides, as claimed by many scientists across the globe.

However, two contradicting schools of thought exist here... One group of scientists claim that optimum improvement of outdoor environment can be influenced by larger tree quantity [13]. In contrast, others have mentioned in their studies that the heat flux in streets with tree crowns was similar to that without tree crowns, although there was a large difference in road surface temperature between them [15].

Similarly, some researchers are of the view that ambient temperature is independent of street greenery, though it results in a transient perception of enhanced thermal comfort [16]. This idea is also supported by the findings of the studies of some other researchers who mentioned that the differences in the surface temperatures of the tree shaded areas are more pronounced compared to the air temperatures [17]. However on the contrary, some authors claimed that the cooling effect mediated by shading from trees is more significant than that by evapotranspiration from lawns [18].

Additionally, some scientists have also mentioned in their studies that in the streets with a high percentage of canopy cover, air temperature, relative humidity, solar radiation and mean radiant temperature were significantly lower than in streets with low percentage canopy cover[19, 20, 21, 22] as urban street geometry and ways of street greening affect the microclimate in street canyons [23]. These findings are corroborated by studies that have shown that the shade provided by trees reduce mean radiant temperature, and hence the daytime universal thermal climate index (UTCI). During the summer, the reduction in thermal stress was quantified as transitioning from very strong (UTCI > 38°C), to strong (UTCI > 32°C) [24].

Contextually, a major group of scientists are of the opinion that greenery has been proven to mitigate the urban heat island effect. Hence, vegetation along the streets ameliorates the thermal comfort of the canyon [7]. Moreover, the authors LimorShashua-Bar and Milo E. Hoffman, in the year 2003, claimed that the cooling effect depended mainly on the amount and extent of the partial shaded area [25]. Again, in the year 2012, Mohd Fairuz Shahidan et al. stated that higher levels of tree canopy density (LAI 9.7), coupled with "cool" materials (albedo of 0.8), produced the largest urban air temperature reduction [13]. Additionally, Edward NG et al., in the same year, suggested that trees could be more effective than grass surfaces in cooling pedestrian areas [26]. The author further stated that about 33% of the urban area, if planted with trees, can lower the atmospheric temperature by 1°C for the pedestrians.

Considering the cooling potential of the various kinds of trees, the deciduous species were found to be better than the evergreen variants [27, 28, 29]. Cynthia Skelhorn et al. (2014) further claims that increasing the mature deciduous trees by 5% can reduce the mean hourly surface temperatures by 1°C during the summers in the suburban areas of temperate cities [28]. Additionally, Loyde Vieira De Abreu-Harbich et al. (2015) states that the species *CaesalpiniaPluviosa* is capable of reducing PET by 12 to 16°C, when planted in a cluster [30].

A significant body of literature has demonstrated that increasing vegetation cover mitigates the UHI effect, and hence influences urban microclimate [31, 32, 17, 33, 12, 8, 6, 34, 35]. Mature trees are better at mediating this effect, and hence are preferred constituents of roadside vegetation [36].

This study aims to evaluate the impact of street side vegetation on climatic temperature, in a warm and humid climatic zone. An instrument survey was conducted to collect primary data, and the cooling potential of vegetation was evaluated. The geometric orientation of streets was systematically varied, and the cooling potential of different orientations were evaluated across seasons. Data analysis indicates that trees planted along northern pavements of east-west oriented streets mediate a greater cooling effect than trees planted along southern pavements. In addition, a shade index was generated to quantify the amount of incident solar radiation blocked by the trees at different times of the day.

2. METHODOLOGY

2.1 Site Location

The study was conducted in Kharagpur, a city in the Indian state of West Bengal. It is located in a warm and humid climatic zone. Another vital criterion that was kept in mind while selecting the site was that it should consist of four streets in such a way that two of them should be oriented in the East-West direction, while the other two should be aligned in the North-South direction. Besides, one of the streets from each of the orientations was required to have a higher vegetation of trees than the other. Figure 1 shows the map of the site and its location.

Comment [AD1]: Can you mention with accuracy the latitude/longitude of the site?

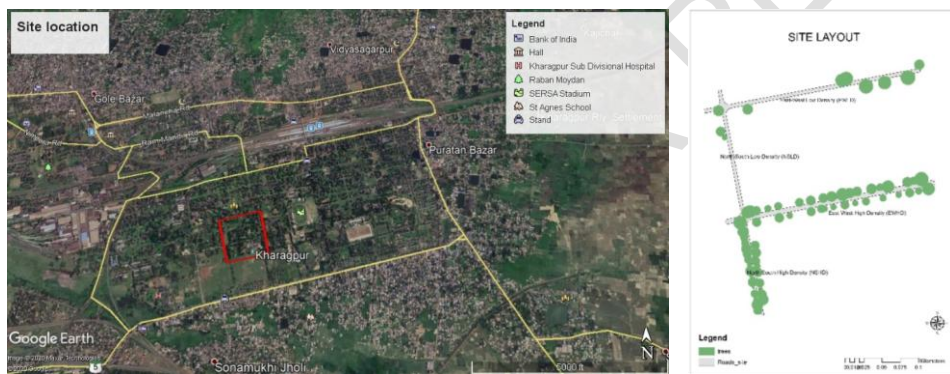


Fig.1 Site Location

These streets are hereafter referred to as East-West high density (EWHHD) road, East-West low density (EWLD) road, North-South high density (NSHD) road and North-South low density (NSLD) road. All of these roads are shown in Figure 1.

2.2 Data Collection

The data was collected through a primary survey with the help of instruments that are described in the following sections. For the ease of the survey, thirteen cross-sections were marked throughout these four streets. The main consideration in selecting these cross-sections was the presence of trees on the sides. A subset contained trees on both sides, others had trees on one side, while a few had no trees at all.

For instance, the East-West high density (EWHHD) road was marked with four cross-sections viz., CS-01, CS-02, CS-03 and CS-04. Out of these, the first two cross-sections have trees on both the sides, while the other two have trees only on one side. Cross-section CS-03 has a tree on the left side, which is also the Southern direction; whereas, the cross-section CS-04 has a tree on the right side, which is also the Northern direction.

Further, in the street North-South high density (NSHD), three cross-sections were singled out viz., CS-05, CS-06 and CS-07. The first two had trees on both sides, while CS-07 had trees only on the left side, corresponding to the western direction.

Next, three cross-sections were selected from each of the North-South low density (NSLD) and the East-West low density (EWLD) roads, namely, CS-08, CS-09 and CS-10 from the former and CS-11, CS-12 and CS-13 from the latter. Incidentally, one cross-section (CS-09 in the former and CS-12 in the latter) in each of these roads had no trees on either side; whereas, all the other cross-sections in both these roads had only one tree on the alternate sides. CS-08 had a tree on its right side, which also corresponds to the Eastern direction, whereas; CS-10 had a tree on the opposite side. Similarly, CS-11 had a tree on its right side which corresponds to the Southern direction while, the cross-section CS-13 had a tree on the opposite side.

Solar parameters were measured at these cross-sections. These parameters were the surface temperature, ambient temperature, and incident solar radiation. The measurements were taken with an infrared thermometer, a thermohygrometer, and a solar power meter, respectively. The readings were taken on either side of the cross-sections, and also at the middle of the road. In the instance where there was a tree present at the side of a cross-section, the readings were taken both, under as well as outside the shade.

3. RESULTS AND DISCUSSION

3.1 Primary Data Processing.

3.1.1 Computation of Relative Variations

The relative variations in ambient temperature (RVAT), surface temperature (RVST), and the solar radiation attenuation (SRA), were calculated by the following formulae:

$$\text{Relative Variation in Ambient Temperature (RVAT)} = \frac{(\text{Ambient temperature under sun} - \text{Ambient temperature under shade})}{\text{Ambient temperature under sun}} \times 100 \dots(1)$$

$$\text{Relative Variation in Surface Temperature (RVST)} = \frac{(\text{Surface temperature under sun} - \text{Surface temperature under shade})}{\text{Surface temperature under sun}} \times 100 \% \dots(2)$$

$$\text{Solar Radiation Attenuation (SRA)} = \frac{(\text{Solar Radiation under sun} - \text{Solar Radiation under shade})}{\text{Solar Radiation under sun}} \times 100 \% \dots(3)$$

The SRA formula was introduced by Bueono-Bartholomei and Labaki [37], and we adopted a similar logic in computing the relative variations in temperature.

Comment [AD2]: Make this formula most clear

3.1.2 Qualitative Matrix Analysis

Temperature and radiation data were collected for each of the cross-sections, across five different time intervals, during April, May, June, November and December. The time intervals chosen were 8 am, 10 am, noon, 2 pm and 4 pm. The RVST, RVAT and SRA values were computed for each data point, and these values were represented as matrices. In the instances where the cross-sections had trees on both sides, the data was represented as two matrices, corresponding to each side.

Comment [AD3]: Why do you choose these period?

The resulting matrices were converted into a binary format by comparing the terms with the corresponding matrix comprising of the data collected from the other side of the road. The value that was greater one was marked as "1", while the lesser one was marked as "0". So now each of the aforementioned matrices had a corresponding binary matrix.

Subsequently, the binary matrices corresponding to the left and right side of each of these cross-sections were compared, and the side consisting of more number of "1's" was marked as heavier. The matrix with the greater number of one's thus indicated a greater cooling effect mediated by the trees on the corresponding side of the cross-section. For the cross-sections which consisted of only one tree, those were compared with another such cross-section corresponding to the same street, but with a tree on the opposite side. Accordingly, the qualitative matrix analysis was effectuated and is shown in the following tables.

Table 1 Qualitative Matrix Analysis for cross-section CS-01

CS	Matrix (Left Side)		Binary of Matrix (Left Side)	Possible Explanation for the higher cooling potential on the concerned side	Binary of Matrix (Right Side)		Matrix (Right Side)						
	CS-01	EWHD			CS-01	EWHD	CS-01	EWHD					
Street	April	13	0.2	28	0	0	0	1	1	1	24	0.9	89
		30	0.4	86	1	0	0	0	1	1	27	0.6	90
		28	0.1	82	0	1	0	1	0	1	38	0	86
		16	1	83	0	0	0	1	1	1	33	1.1	87
		2	0	29	0	0	0	1	0	1	16	0	79
		17	0.8	75	1	0	0	0	1	1	11	1.6	87
	May	32	3	84	1	0	0	0	1	1	26	6.1	91
		38	2.2	88	1	1	0	0	1	1	35	2	89
		12	1.3	84	0	1	0	1	0	1	41	1	90
		15	2.3	78	0	1	1	1	0	0	24	1.4	72
		27	3.6	80	1	0	1	0	0	0	16	3.2	78
		26	9.2	79	1	0	0	0	1	1	22	11	89
June	41	6.1	85	1	1	0	0	1	1	38	5.1	93	
	31	6.7	89	1	1	1	0	0	0	26	6.2	88	
	33	7.2	74	1	1	0	0	0	1	32	5.6	84	

This is the very first cross-section not just for the study but also in the concerned street. Ahead of this cross-section there's a wide cross-road creating a considerable length of gap in the green fabric of the street. Hence apart from the physical characteristics of the trees concerned, the position of the sun and other factors like the position from which the readings have been taken also plays a major role in the measured data. Incidentally, the tree on the right side of this cross-section has a greater foliage and crown-density as compared to that on the other side. Besides, during the times of the day when the solar angle is low, there's a considerable amount of sunlight even under the tree (on the right side) due to the gap created by the cross-road ahead.

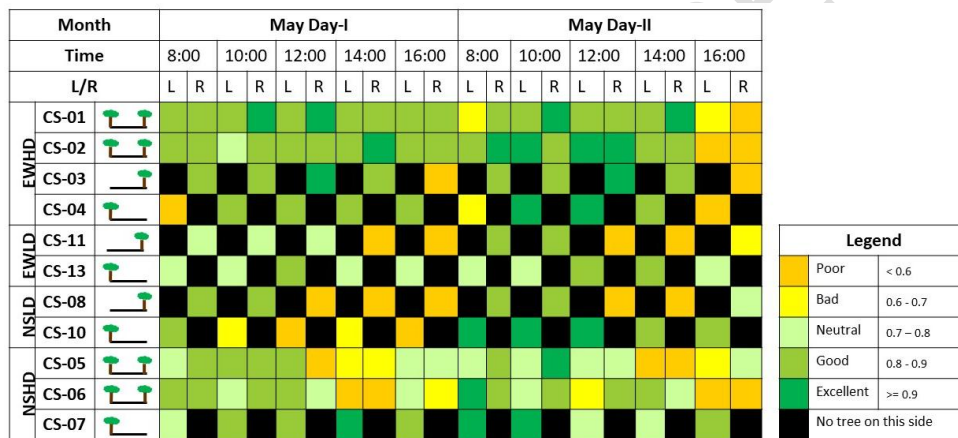
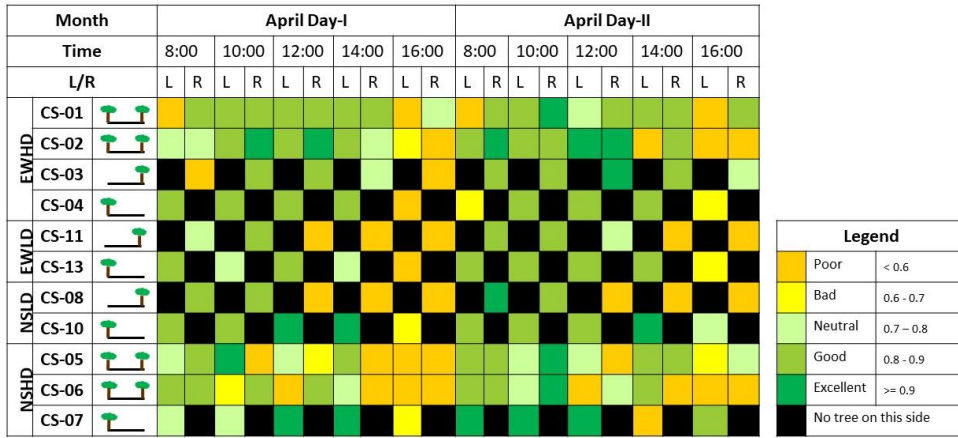
Table 2 Qualitative Matrix Analysis of cross-section CS-02

CS	CS-02														
Street	EWHD														
Month	April				May				June						
Matrix (Left Side)	21	31	34	36	10	16	24	38	25	17	17	28	38	25	26
Matrix (Left Side)	0.4	0.1	0.4	0.9	0	0.3	7.3	1.1	11	0.3	2	9.8	7.7	7	2.9
Binary of Matrix (Left Side)	1	1	1	1	1	0	0	0	0	1	0	0	0	0	1
Possible Explanation for the higher cooling potential on the concerned side	As evident, the right side is mostly showing a higher relative variation in the readings of the outside shade and inside the shaded regions as the tree on this side has a greater foliage.														
Binary of Matrix (Right Side)	0	0	0	0	0	1	1	1	1	0	1	1	1	1	0
Matrix (Right Side)	16	28	26	30	7	19	34	46	35	13	19	33	41	31	18
Matrix (Right Side)	11	0.1	0.4	0.5	0	0.2	0.9	0.8	0.9	0.7	1.9	8.2	8.1	5.9	0.9
Matrix (Right Side)	83	87	92	80	44	89	86	88	90	66	81	91	94	93	84

Table 3 Qualitative Matrix Analysis of cross-sections CS-03 and CS-04

Street Month	Matrix: CS-04 (Left Side)			Binary of CS-04 (Left Side)			Possible Explanation for the higher cooling potential on the concerned side	Binary of CS-03 (Right Side)			Matrix: CS-03 (Right Side)					
	22	27	30	1	0	1		0	1	0	18	20	30	23	36	37
April	74	86	85	0	0	0	<p>The tree in the cross-section CS-03 of the street EWHD has very large foliage as compared to the one in CS-04. Hence the matrices corresponding to the former is clearly heavier than that of the other cross-section. In other words, the tree in the cross-section CS-03 has a greater cooling potential as that compared to the one in the cross-section CS-04.</p>	0	1	0	2.6	59	2	2.2	2.6	
	0.4	0.4	1	1	0	0		1	1	1	0.4	88	84	89	92	89
	0.1	0.1	0.4	1	1	1		0	0	0	0.4	85	80	63	1.5	89
May	52	87	90	0	0	0		0	0	0	0	0.6	26	17	0.6	26
	1.1	4.3	3.9	0	1	0		1	1	1	0	86	86	86	3.3	86
	1.2	3.5	3.5	1	1	1		0	0	0	0	89	89	89	7.1	89
June	68	85	88	1	1	0		0	0	0	0	0.6	26	17	0.6	26
	3.7	6.9	5.7	1	0	0		1	1	1	0	86	86	86	3.3	86
	3.7	4.6	4.6	1	0	0		0	0	0	0	92	92	92	7.3	94
	75	86	86	1	0	0		0	0	0	0	0.6	26	17	0.6	26
	31	3.7	3.7	1	0	0		0	0	0	0	81	81	81	5.1	81

comprised of all the values lesser than 0.6. These categories were then represented in the form of a colour-coded matrix which is given in the figure 2.



UNDEI

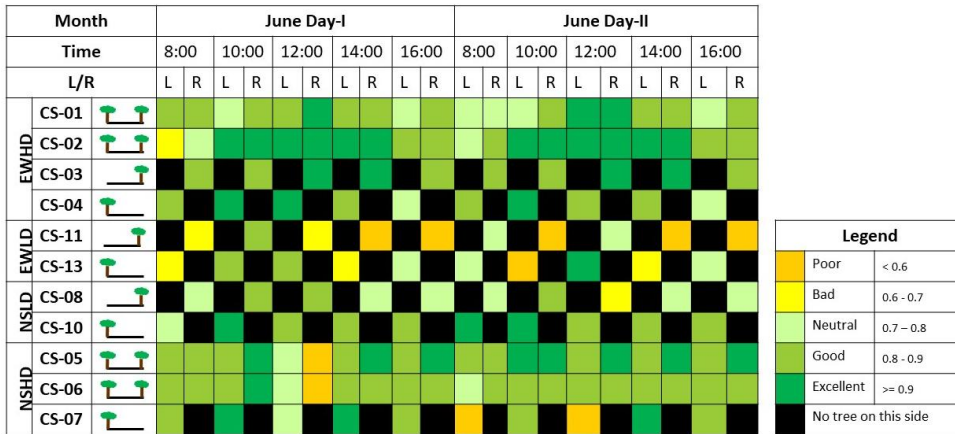


Figure 2 Colour-coded matrix representing shade index

It was observed that in the month of April, the left side of CS-01 (which corresponds to the Southern direction) facing West, receives sunlight in the morning 8:00 a.m. and evening 4:00 p.m. As mentioned during the qualitative matrix analysis, this is due to the presence of a wide gap in the streetside plantation fabric because of a cross-road just ahead of this cross-section. In addition, the rays of the sun are at a low incident angle during this time of day, bypassing the high crown of the trees situated on this side.

However, it's interesting to note that in the streets with lower tree density, this pattern is rippled to around 2:00 p.m. in the EWLD street and to around 12:00 noon in the NSLD street. Nevertheless, this pattern was observed to gradually fade away as the summer season advances to the months of May and June.

The results of the qualitative matrix analysis were corroborated by the shade index, reinforcing the findings of previous researchers that a shade providing tree creates a cooling effect. In addition, a deciduous tree blocks certain amount of incident solar radiation. The amount blocked depends on the solar angle, as well as how closely the branches of the tree are placed.

4. CONCLUSION

The idea behind conducting this study was to evaluate the cooling potential of the street canopy based on its physical characteristics and orientation, scientifically. However, this study was based solely in a warm and humid climatic zone. In future this study could be extended to other climate zones as well. Besides, more species of trees used for roadside plantation could be considered for assessing their cooling potential. Additionally, more advanced instruments such as drones could be used for the survey. Furthermore, longwave and shortwave radiation fluxes could be measured for the calculation of the MRT, which in turn may add further insights to the study.

CONSENT (WHEREEVER APPLICABLE)

This section is not applicable to this study.

ETHICAL APPROVAL (WHEREEVER APPLICABLE)

This section is not applicable for this study.

REFERENCES

1. Georges K. Kome, Roger K. Enang and Fritzgerald K. Bine. Climate change, soil fertility management and the nexus: A knowledge and opinions study in Western Cameroon. *Journal of Scientific Research and Reports*. 2017; 13(4): 1-16. DOI: 10.9734/JSRR/2017/31730.
2. Robert D. Brown. Ameliorating the effects of climate change: Modifying microclimates through design. *Landscape and Urban Planning*. 2011; 100(4): 372-374. DOI: <https://doi.org/10.1016/j.landurbplan.2011.01.010>.
3. Briony A. Norton, Andrew M. Coutts, Stephen J. Livesley, Richard J. Harris, Annie M. Hunter, Nicholas S.G. Williams. Planning for cooler cities: A framework to prioritise green infrastructure to mitigate high temperatures in urban landscapes. *Landscape and Urban Planning*. 2015; 134: 127-138. DOI: <https://doi.org/10.1016/j.landurbplan.2014.10.018>.
4. A.C.C. Ezeabasili, I.E. Iloghalu, B.U. Okoro, I.F. Manafa. Sustainable urban forestry in Nigerian built environments. *Journal of Scientific Research and Reports*. 2015; 5(7): 524-531. DOI: 10.9734/JSRR/2015/14613
5. MahyarMasoudi, Puay Yok Tan, Soo Chin Liew. Multi-city comparison of the relationships between spatial pattern and cooling effect of urban green spaces in four major Asian cities. *Ecological Indicators*. 2019; 98: 200-213. DOI: <https://doi.org/10.1016/j.ecolind.2018.09.058>
6. Yujia Zhang, Jordan P. Smith, Daoqin Tong, B.L. Turner II. Optimizing the co-benefits of food desert and urban heat mitigation through community garden planning. *Landscape and Urban Planning*. 2022; 226: 104488. DOI: <https://doi.org/10.1016/j.landurbplan.2022.104488>.
7. L. Shashua-Bar and M. E. Hoffman. Vegetation as a climatic component in the design of an urban street: An empirical model for predicting the cooling effect of urban green areas with trees. *Energy and Buildings*. 1999; 31(2000): 221-235.
8. J.E.Zawadzka, J.A. Harris, R. Corstanje. Assessment of heat mitigation capacity of urban greenspaces with the use of InVEST urban cooling model, verified with day-time land surface temperature data. *Landscape and Urban Planning*. 2021; 214: 104163. DOI: <https://doi.org/10.1016/j.landurbplan.2021.104163>
9. Robert D. Brown, Jennifer Vanos, Natasha Kenny, SandaLenzholzer. Designing urban parks that ameliorate the effects of climate change. *Landscape and Urban Planning*. 2015; 138: 118-131. DOI: <https://doi.org/10.1016/j.landurbplan.2015.02.006>
10. Zhifeng Wu and Liding Chen. Optimizing the spatial arrangement of trees in residential neighborhoods for better cooling effects: Integrating modeling with in-situ measurements. *Landscape and Urban Planning*. 2017; 167: 463-472. DOI: <https://doi.org/10.1016/j.landurbplan.2017.07.015>

11. Arpit Shah, Amit Garg, Vimal Mishra. Quantifying the local cooling effects of urban green spaces: Evidence from Bengaluru, India. *Landscape and Urban Planning*. 2021; 209: 104043. DOI: <https://doi.org/10.1016/j.landurbplan.2021.104043>
12. Carlos Bartesaghi-Koc, Paul Osmund, Alan Peters. Quantifying the seasonal cooling capacity of 'green infrastructure types' (GITs): An approach to assess and mitigate surface urban heat island in Sydney, Australia. *Landscape and Urban Planning*. 2020; 203: 103893. DOI: <https://doi.org/10.1016/j.landurbplan.2020.103893>.
13. Mohd Fairuz Shahidan, Phillip J. Jones, Julie Gwilliam, Elias Salleh. An evaluation of outdoor and building environment cooling achieved through combination modification of trees with ground materials. *Building and Environment*. 2012; 58: 245-257. DOI: <https://doi.org/10.1016/j.buildenv.2012.07.012>
14. R. Emmanuel and A. Loconsole. Green infrastructure as an adaptation approach to tackling urban overheating in the Glasgow Clyde Valley Region, UK. *Landscape and Urban Planning*. 2015; 138: 71-86. DOI: <https://doi.org/10.1016/j.landurbplan.2015.02.012>
15. Kenichi Narita, Hirofumi Sugawara, Tsuyoshi Honjo. Effects of roadside trees on the thermal environment within a street canyon. *Geographical Reports of Tokyo Metropolitan University*. 2008; 43 (2008): 41-48.
16. Wiebke Klemm, Bert G. Heusinkveld, Sanda Lenzholzer, Bert van Hove. Street greenery and its physical and psychological impact on thermal comfort. *Landscape and Urban Planning*. 2015; 138: 87-98. DOI: <https://doi.org/10.1016/j.landurbplan.2015.02.009>.
17. Sten Gillner, Juliane Vogt, Andreas Tharang, Sebastian Dettmann, Andreas Roloff. Role of street trees in mitigating effects of heat and drought at highly sealed urban sites. *Landscape and Urban Planning*. 2015; 143: 33-42. DOI: <https://doi.org/10.1016/j.landurbplan.2015.06.005>.
18. Zhi-Hua Wang, Xiaoxi Zhao, Jiachuan Yang, Jiyun Song. Cooling and energy saving potentials of shade trees and urban lawns in a desert city. *Applied Energy*. 2016; 161: 437-444. DOI: <https://doi.org/10.1016/j.apenergy.2015.10.047>.
19. V.N. Ojeh, A. Philip-Humshie, H.A. Garba, E. Naabil, E.C. Obiano, O.P. Boyitie et al. The environmental benefits of trees in a changing climate: A Nigerian experience. *Journal of Scientific Research and Reports*. 2020; 26(6): 59-75. DOI: 10.9734/JSRR/2020/v26i630272
20. James Gyasi-Addo and Amar Bennadji. A procedure for assessing UHI intensity in the central business district of Accra. *Journal of Scientific Research and Reports*. 2020; 26 (5): 42-61. DOI: 10.9734/JSRR/2020/v26i530259
21. D. Nyame-Tawiah, L. Attuah, C. Koranteng. Determination of the effect of green roofs on indoor temperature by the use of simulation in a tropical landscape. *Journal of Scientific Research & Reports*. 2020; 26(4): 12-28. DOI: 10.9734/JSRR/2020/v26i430244.
22. Ruzana Sansui, Denise Johnstone, Peter May, Stephen J Livesley. Street orientation and side of the street greatly influence the microclimatic benefits street trees can provide in summer. *Journal of Environmental Quality*. 2016; 45(1): 167-174. DOI: 10.2134/jeq2015.01.0039.
23. Kuo-Tsang Huang and Yi-Jhen Li. Impact of street canyon typology on building's peak cooling energy demand: A parametric analysis using orthogonal experiment. *Energy and Buildings*. 2017; 154: 448-464. DOI: <https://doi.org/10.1016/j.enbuild.2017.08.054>.
24. Andrew Coutts, Emma C White, Nigel Tapper, Jason Beringer, Stephen J Livesley. Temperature and human thermal comfort effects of street trees across three contrasting street canyon environments. *Theoretical and Applied Climatology*. 2015. DOI: 10.1007/s00704-015-1409-y
25. Limor Shashua-Bar and Milo E. Hoffman. Geometry and orientation aspects in passive cooling of canyon streets with trees. *Energy and Buildings*. 2003; 35(1): 61-68. DOI: 10.1016/S0378-7788(02)00080-4

26. Edward Ng, Liang Chen, Yingna Wang, Chao Yuan. A study on the cooling effects of greening in a high-density city: An experience from Hong Kong. *Building and Environment*. 2012; 47: 256-271. DOI: <https://doi.org/10.1016/j.buildenv.2011.07.014>
27. Loyde Vieira de Abreu-Harbich, Lucila C Labaki, Andreas Matzarakis. Different trees and configuration as microclimate control strategy in tropics. 8th International Conference on Urban Climates. 2012.
28. Cynthia Skelhorn, Sarah Lindley, Geoff Levermore. The impact of vegetation types on air and surface temperatures in a temperate city: A fine scale assessment in Manchester, UK. *Landscape and Urban Planning*. 2014; 121: 129-140. DOI: <https://doi.org/10.1016/j.landurbplan.2013.09.012>
29. A. Dandou, G. Papangelis, T. Kontos, M. Santamouris, M. Tombrou. On the cooling potential of urban heating mitigation technologies in a coastal temperate city. *Landscape and Urban Planning*. 2021; 212: 104106. DOI: <https://doi.org/10.1016/j.landurbplan.2021.104106>
30. Loyde Vieira de Abreu-Harbich, Lucila Chebel Labaki, Andreas Matzarakis. Effect of tree planting design and tree species on human thermal comfort in the tropics. *Landscape and Urban Planning*. 2015; 138: 99-109. DOI: <https://doi.org/10.1016/j.landurbplan.2015.02.008>
31. Argiro Dimoudi, Marialena Nikolopoulou. Vegetation in the urban environment: microclimatic analysis and benefits. *Energy and Buildings*. 2003; 35(1): 69-76. DOI: [https://doi.org/10.1016/S0378-7788\(02\)00081-6](https://doi.org/10.1016/S0378-7788(02)00081-6)
32. Gudina Legese Feyisa, Klaus Dons, Henrik Meilby. Efficiency of parks in mitigating urban heat island effect: An example from Addis Ababa. *Landscape and Urban Planning*. 2014; 123: 87-95. DOI: <https://doi.org/10.1016/j.landurbplan.2013.12.008>
33. Hyunjung Lee, Helmut Mayer, Liang Chen. Contribution of trees and grasslands to the mitigation of human heat stress in a residential district of Freiburg, Southwest Germany. *Landscape and Urban Planning*. 2016; 148: 37-50. DOI: <https://doi.org/10.1016/j.landurbplan.2015.12.004>
34. Or Aleksandrowicz and David Pearlmuter. The significance of shade provision in reducing street-level summer heat stress in a hot Mediterranean climate. *Landscape and Urban Planning*. 2023; 229: 104588. DOI: <https://doi.org/10.1016/j.landurbplan.2022.104588>
35. Rundong Feng, Fuyuan Wang, Shenghe Liu, Wei Qi, Yicai Zhao, Yifan Wang. How urban ecological land affects resident heat exposure: Evidence from the mega-urban agglomeration in China. *Landscape and Urban Planning*. 2023; 231: 104643. DOI: <https://doi.org/10.1016/j.landurbplan.2022.104643>
36. Khaled Hashad, Bo Yang, John Gallagher, Richard Baldauf, Parikshit Deshmukh, K. Max Zhang. Impact of roadside conifers vegetation growth on air pollution mitigation. *Landscape and Urban Planning*. 2023; 229: 104594. DOI: <https://doi.org/10.1016/j.landurbplan.2022.104594>
37. Carolina Lotufo Bueno-Bartholomei and Lucila C Labaki. How much does the change of species of trees affect their solar radiation attenuation. *International Conference on Urban Climate*. 2003; 267-270