

***Original Research Article***

**ESTIMATION OF WATER SPREAD AREA IN SELECTED TANKS OF CUDDALORE  
DISTRICT OF TAMILNADU USING SENTINEL-1A SAR DATA**

**Abstract:**

A study was conducted to map and estimate the water spread area in the tanks of Kattumannarkoil block of Cuddalore district of Tamil Nadu using Sentinel-1A SAR satellite data. The most important aspect of water resource planning and management is mapping and regular monitoring of surface water bodies. Remote sensing has become most widely used method for measuring and monitoring of waterbody dynamics due its temporal and spatial availability of high-resolution data. European Space Agency's Sentinel-1A data provides high quality SAR data which is used widely for monitoring **og** crop and water resources. The acquisition and preprocessing of satellite data was done using Google Earth Engine. The obtained satellite image from **Google Engine Engine** was processed using ArcGIS. The **Water** spread area was derived from the processed data using thresholding approach. The back-scattering values generated through pre-processing ranges from -18.00 db to -28.12 db for August 2022 (Pre-rainy season), -15.8528 to -26.963 for December 2022 (Post-rainy season) and -15.5467 to -24.8246 for April 2023 (Summertime). The estimated water spread area in selected 12 Tanks were 37.191 ha, 58.34 ha and 59.971 ha on 19th August 2022, 17th December 2022 and 16th April 2023 respectively.

**Comment [M1]:** Or, did the author mean the Google Earth Engine?

**Comment [M2]:** Those marked in red need to be revised.

Keywords: Remote sensing of water, Sentinel-1A SAR, Thresholding, Google Earth Engine.

**Introduction:**

Water is a crucial element in the Earth's atmosphere, playing a vital role in sustaining life and supporting the needs of various organisms. It encompasses approximately 70% of the Earth's surface, appearing in the form of rivers, ponds, seas, oceans, and other water bodies. Surface water resources, such as rivers, ponds, lakes, channels, reservoirs, and dams, are essential for socioeconomic development, environmental balance, and serve as irreplaceable natural assets for human activities like agriculture, industry, households, recreation, and the environment (Song et al., 2016; Pekel et al., 2016). Water holds great significance as an input for agricultural production, contributing significantly to food security. Water resource management involves the construction of dams or reservoirs along rivers to create storage capacity and regulate water flow.

An integral aspect of water resource planning and management is the mapping and regular monitoring of water bodies at river basins, sub-basins, lakes, ponds, and similar entities (Yun et al., 2016). Traditional methods of measuring water spread area typically involve costly and time-consuming field surveys, requiring substantial manpower and sophisticated instruments. To address these challenges, satellite data has emerged as a valuable tool. Over the past few decades, numerous satellite sensors capable of monitoring waterbody dynamics have been deployed. Remote sensing has become the most widely used method for measuring and

monitoring waterbody dynamics due to its timing and accuracy (Dumitru et al., 2015 and Garcia-Pintado et al., 2015). Both Optical and Microwave sensors are utilized for surface water studies. Optical remote sensing is suitable for monitoring changes in water surface areas due to its availability. However, it is limited by cloud cover and cannot provide data during monsoon season, thereby reducing its effectiveness. In contrast, satellite-based Synthetic Aperture Radar (SAR) data is extensively employed in surface water studies due to its all-weather capabilities, and its ability to detect flooded areas covered by vegetation. Sentinel-1A SAR Ground Range Detected (GRD) data in VV polarization is commonly used for its high resolution (10m) and greater accuracy in surface water monitoring (Eotar et al., 2016 and Pham et al., 2017). Several methods have proven effective in monitoring waterbodies and mapping, including thresholding (McFeeters et al., 1996), supervised/unsupervised classification (Lu et al., 2007), Decision tree method (Chen et al., 2015), Image segmentation (Jiang et al., 2014), Fuzzy classification (Martinis et al., 2015), and deep learning (Bonafilia et al., 2020). Thresholding techniques applied to SAR images for surface water mapping are simple, widely used, efficient, computationally less time-consuming, and effective (Gstaiger et al., 2012; Kuenzer et al., 2013).

#### **Materials and Methods:**

The study area is the lower Vellar sub-basin is a significant tributary of the Vellar Basin, covering a total area of 1756.186 square kilometers. It encompasses seven blocks in the Cuddalore District, namely Vridhachalam, Kammapuram, Nallur, Mangalore, Kattumannarkoil, Melbhuvanagiri, and Keerapalaiyam. Additionally, it includes three blocks in the Villupuram district (Chinnasalem, Thirunavalur, Ulundhurpet) and two blocks in the Perambalur District (Veppenthattai and Veppur). The specific study area selected for analysis is the Kattumannarkoil block in the Cuddalore District, which comprises 12 water storage tanks (as shown in Table 1) with a total tank area of 834.863 hectares. Figure 1 illustrates the map of the study area.

**Comment [M3]:** By mentioning 'methods', the reader expects an explanation of how this research was carried out. However, there is no explanation here. Maybe the author meant something else by mentioning the word 'methods' here.

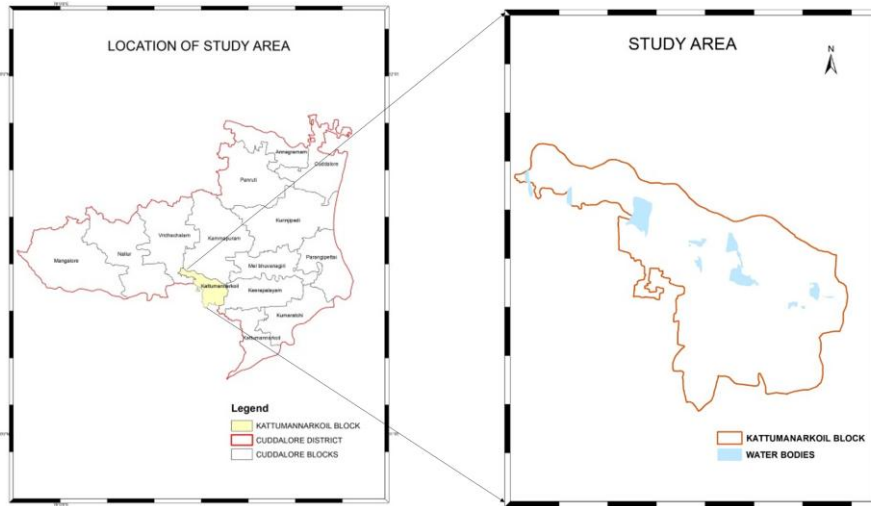


Figure.1 Location of water tanks in Kattumannarkoil block of Cuddalore District

Table 1. List of Tanks in Kattumannarkoil Block of Cuddalore District

S.No	Tank Name	Area occupied (In Hectares)
1.	Ananthakudi Tank	51.56
2.	Gunamangalam Tank	299.57
3.	Kaliyankuppam Tank	5.80
4.	Keelapuliankudi Tank	038.65
5.	Kokkarasanpettai Tank	43.60
6.	Melapuliankudi Tank	1.70
7.	Nagarapadi Tank	164.12
8.	Sathavattam Tank	6.48
9.	Selavizhi Tank	22.39
10.	Sirunedunjeri Tank	66.53
11.	Sriputhur Tank	103.26
12.	Srivakkaramar Tank	31.23

#### Satellite data:

For the present study Sentinel-1A SAR C-Band (5.405GHz), satellite data acquired in GRD Interferometric Wide Swath (IW) Mode was utilized. The satellite data has dual polarization capacity, including HH+HV and VV+VH, and it provides a spatial resolution of 5m\*20m. The swath width of the image is 250 kilometers, and its temporal resolution is approximately 6 to 12

days. Previous research findings indicate that VV polarized data offers significantly higher accuracy compared to VH polarized data for analyzing surface water (Clement et al., 2017). Hence the VV polarized SAR DATA was used here. Three datasets were utilized in this study, each taken at 4-month interval, specifically in August 2022 (pre-rainy season), December 2022 (post-rainy season), and April 2023 (summer season).

### **Pre-processing of Sentinel 1A:**

The pre processing was done with Google Earth Engine tool which demonstrates a methodology for working with satellite data. The code starts by creating a variable, which represents an image collection obtained from the 'COPERNICUS/S1\_GRD' dataset. The collection is filtered to include only VV polarization and images captured in the IW (Interferometric Wide Swath) mode. Furthermore, the code filters the images based on a specific date range and an area of interest defined by the variable. The resulting collection is then printed to the console for examination.

Next, the code generates a median composite image, by calculating the median values from the filtered image collection. This composite is clipped to the defined area of interest. The composite image is added to the map for visualization using the `Map.addLayer()` function, and the map display is centered on the area of interest using `Map.centerObject()` function .

Finally, the code exports the image to Google Drive using the `Export.image.toDrive()` function. The exported image is assigned a description and is saved in a specified folder in the Google Drive. The overview of the web interface adopted for the study is presented in the Figure 2. The region of interest, coordinate reference system (EPSG:4326), and scale are also defined for the exported image. This method provides a systematic approach for filtering, processing, visualizing, and exporting satellite data, allowing for further analysis and utilization of the extracted information.

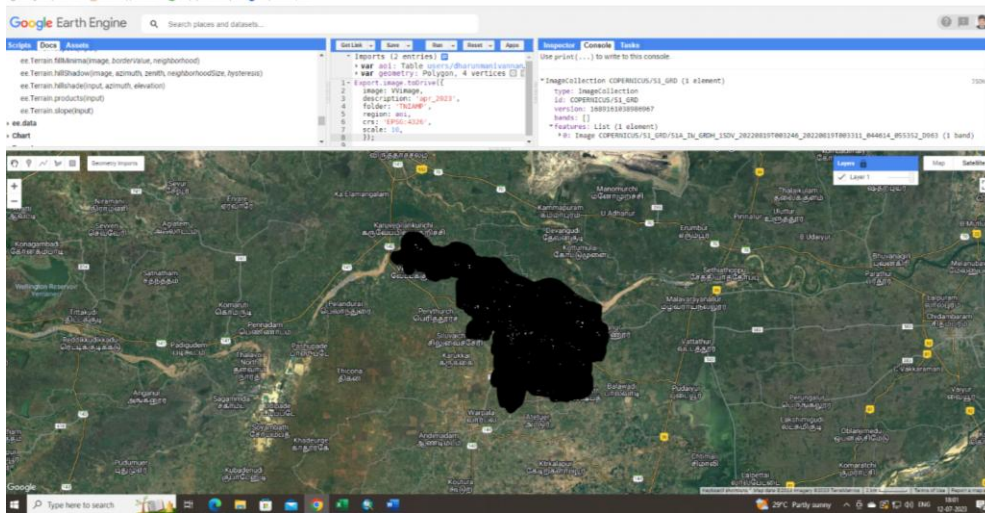


Figure 2. Overview of preprocessed Sentinel 1A image acquisition for the study

### Thresholding:

Different research studies have utilized a thresholding approach with SAR data to detect water feature (Tavus et al., 2018; Liang et al., 2019). Thresholding techniques are widely employed on SAR images because they are efficient and require less computational time. In this case, the detection of water from non-water areas is achieved through the use of histogram thresholding method (Schumann et al., 2009; Pulvirenti et al., 2011). By applying histogram thresholding, maps indicating the areas of water have been created.

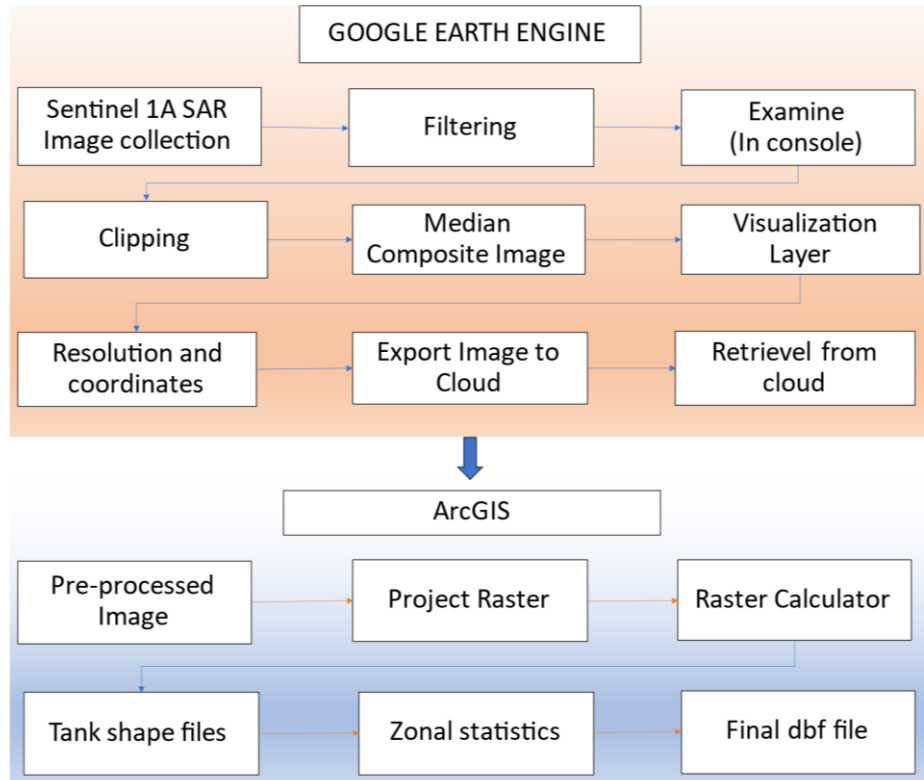


Figure 3: Methodology for mapping water spread area

## Results and Discussion:

In the present study Synthetic Aperture Radar (SAR) satellite data for the month of August 2022, December 2022, and April 2023, were obtained and downloaded. The downloaded data underwent pre-processing using the Google Earth Engine software. During pre-processing, backscattering values were calculated and represented in decibel units. For August 2022 (pre-rainy season), the backscattering values ranged from -18.00db to -28.12 db. In December 2022 (post-rainy season), the values ranged from -15.85 db to -26.96db, and in April 2023 (summertime), the values ranged from -15.55 db to -24.82 db. Lower backscattering values, indicated by darker tones, which corresponded to water pixels, while higher backscattering values, indicated by brighter tones, corresponded to constructions and settlements. Intermediate backscatter values corresponded to vegetation, bare land, and dry soils.

### Water spread area estimation:

The Water spread area was estimated using histogram thresholding method, a commonly used and effective technique for generating binary images. The threshold values (-26 for August 2022, -28 for December 2022, and -18 for April 2023) were determined empirically through manual analysis. These values were utilized to estimate and map the water spread area in the tanks. The results showed a total water spread area of 37.191 hectares in August 2022, 58.34 hectares in December 2022, and 59.971 hectares in April 2023, as presented in Table 1. The variation in water spread may be attributed to support this fact provide monthly rainfall of **cuddalore** district block during these seasons. Previous studies by Huang et al. (2018) and Tavus et al. (2018) also found the thresholding approach effective for mapping surface water.

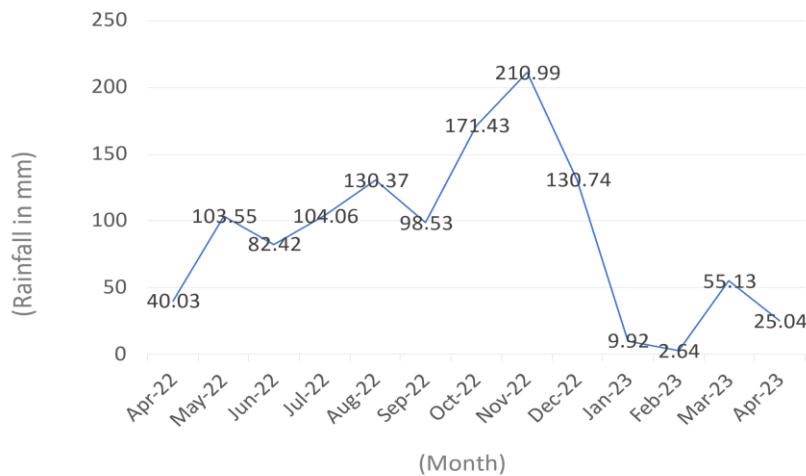


Table 2. Water Spread of the Tanks in Hectares.

Figure 4: Rainfall pattern for Cuddalore district from April-2022 to April-2023

	Tank Name	Water spread area (Ha)		
		August 2022	December 2022	April 2023
1	Ananthakudi Tank	0.53	0.40	0.45
2	Gunamangalam Tank	38.3	38.05	29.13
3	Kaliyankuppam Tank	0.4	0.07	0.07
4	Keelapuliankudi Tank	2.17	2.59	1.51
5	Kokkarasanpettai Tank	0.01	1.51	0.50
6	Melapuliankudi Tank	0.20	0.05	0.04
7	Nagarapadi Tank	0.48	2.44	1.33
8	Sathavattam Tank	0.41	0.19	0.02
9	Selavizhi Tank	0.86	1.45	0.11
10	Sirunedunjeri Tank	6.25	10.36	0.74
11	Sriputhur Tank	2.76	2.85	0.80
12	Srivakkaramar Tank	5.75	3.32	2.59

Notably, there was a significant difference in the water spread area observed in the Kokkarasanpettai tank, due to variation in rainfall as shown in Figure 4, which was nearly dry in August 2022, had a water spread of 1.5 hectares in December 2022, and decreased to 0.5 hectares in April 2023. Gunamangalam tank had consistently high water spread throughout the period, with the highest value in August 2022. Sirunedunjeri tank experienced significant fluctuations in water spread, with the highest value in December 2022. Kokkarasanpettai tank showed a substantial increase in water spread from August to December 2022. Sathavattam Tank had a decreasing trend in water spread, with the lowest value in April 2022. Sriputhur Tank demonstrated moderate water spread levels, with a slight increase from August to December 2022 as shown in figure 2.

#### **Conclusions:**

The application of the Thresholding method using Sentinel-1A SAR in conjunction with Google Earth Engine and ArcGIS software proved to be successful in estimating and monitoring the water spread area in the Kattumannarkoil block of the lower Velar sub-basin. The results indicate that the water spread area can be effectively estimated and tracked using this approach. On August 19, 2022, December 17, 2022, and April 16, 2023, the estimated total available water spread areas in the selected 12 tanks were found to be 37.191 hectares, 58.34 hectares, and 59.971 hectares, respectively.

#### **References:**

- Bonafilia, D., Tellman, B., Anderson, T. and Issenberg, E. 2020. Sen1Floods11: a georeferenced dataset to train and test deep learning flood algorithms for Sentinel1. 2020 IEEE/CVF Conference on Computer Vision and Pattern Recognition Workshops (CVPRW), 835- 845. 10.1109/CVPRW50498.2020.00113.
- Chen, Y., Qiao, S., Zhang, G., Xu, Y.J., Chen, L. and Wu, L. 2020. Investigating the potential use of Sentinel1 data for monitoring wetland water level changes in China's Momoge National Nature Reserve. PeerJ 8: e8616. <http://doi.org/10.7717/peerj.8616>.
- Chen, Chien-Ta; Hung, Chia,-Tse ,Lin, Jyh,-Dong and Sung, Po-Hsun 2015. Application of a decision tree method with a spatiotemporal object database for pavement maintenance and management. Journal of Marine Science and Technology. 23(3), DOI: 10.6119/ JMST-014-0327-5.
- Clement, Prabhakar, John, Gerald and Yin, Fah. 2017. Assessing the Increase in Background Oil-Contamination Levels Along Alabama's Beaches Resulting from the Deepwater Horizon Oil Spill. Oil Spill Science and Technology (2nd edition pp 851-888). <https://doi.org/10.1016/B978-0-12-809413-6.00016-3>.
- Donato Amitrano, Gerardo Di Martino, Antonio Iodice, Daniele Riccio, Giuseppe Ruello, Fabio Ciervo, Maria Nicolina Papa & Youssouf Koussoubé 2014. Effectiveness of high-resolution SAR for water resource management in low-income semi-arid countries. International Journal of Remote Sensing. 35:1, 70- 88, DOI: 10.1080/01431161.2013.862605
- Du, Y.; Zhang, Y., Ling, F., Wang, Q., Li, W., Li, X. Water Bodies' Mapping from Sentinel-2 Imagery with Modified Normalized Difference Water Index at 10- m Spatial Resolution Produced by Sharpening the SWIR Band". Remote Sensing. 2016, 8, 354. <https://doi.org/10.3390/rs8040354>.
- Dumitru, Corneliu& Cui, Shiyong&Faur, Daniela &Datcu, Mihai. 2015. Data Analytics for Rapid Mapping: Case Study of a Flooding Event in Germany and the Tsunami in Japan Using Very High Resolution SAR Images. IEEE Journal of Selected Topics in Applied Earth Observations and Remote Sensing. 8. 114-129. 10.1109/JSTARS.2014.2320777.
- Èotar, K., Oštir, K., and Kokalj, •. 2016: Radar Satellite Imagery and Automatic Detection of Water Bodies. GeodetskiGlasnik, 50(47): 5-15
- Flood Mapping Using Sentinel-1 SAR Data: A Case Study of Ordu 8 August 2018 Flood". International Journal of Environment and Geoinformatics. 6. 333-337. 10.30897/ijegeo.666212. Uddin, K., Matin, M.A., Meyer, F.J.2019 Operational flood mapping using multi-temporal Sentinel-1 SAR images: A case study from Bangladesh. Remote Sensing. 2019, 11, 1581.

- García-Pintado, Javier, David C. Mason, Sarah L. Dance, Hannah L. Cloke, Jeff C. Neal, Jim Freer, and Paul D. Bates. 2015. "Satellite-supported flood forecasting in river networks: A real case study." *Journal of Hydrology* 523:706-724. doi: <https://doi.org/10.1016/j.jhydrol.2015.01.084>.
- Gstaiger, Veronika and Huth, Juliane and Gebhardt, Steffen and Wehrmann, Thilo and Kuenzer, Claudia. 2012. "Multi-sensoral and automated derivation of inundated areas using TerraSAR-X and ENVISAT ASAR data". *International Journal of Remote Sensing* - 33. 7291-7304. 10.1080/01431161.2012.700421.
- Huang, W., DeVries, B., Huang, C., Lang, M.W., Jones, J.W., Creed, I.F., Carroll, M.L. Automated extraction of surface water extent from Sentinel-1 data. *Remote Sensing*. 10: 797
- Jiang, H., Feng, M., Zhu, Y.Q., Lu, N., Huang, J.X., Xiao, T. "An automated method for extracting rivers and lakes from Landsat imagery. *Remote Sensing*. 2014, 6, 5067–5089.
- Liang, Hongnan and Jia, Heming and Zhikai, Xing and Ma, Benedict and Peng, Xiaoxu. 2019. "Modified Grasshopper Algorithm Based Multilevel Thresholding for Color Image Segmentation, *IEEE Access*. PP. 1-1. 10.1109/ACCESS.2019.2891673.
- Lu, Dengsheng, 2007. "A Survey of Image Classification Methods and Techniques for Improving Classification Performance". *International Journal of Remote Sensing*. 28. 823 - 870. 10.1080/01431160600746456
- Martinis, Sandro and Kersten, Jens and Twele, André. (2015). A fully automated TerraSAR-X based flood service. *ISPRS Journal of Photogrammetry and Remote Sensing*. 104. 203-212. 10.1016/j.isprsjprs.2014.07.014.
- McFeeters, S.K. 1996 The use of the Normalized Difference Water Index (NDWI) in the delineation of open water features". *International Journal of Remote Sensing*. 1996, 17: 1425–1432.
- Pekel J-F, Cottam A, Gorelick N:Belward, AS. 2016. "Highresolution mapping of global surface water and its long-term changes". *Nature* 540(7633):418-422
- Pham, Binh &Prigent, Catherine and Aires, Filipe. 2017"Surface Water Monitoring within Cambodia and the Vietnamese Mekong Delta over a Year, with Sentinel-1 SAR Observations". *Water*. 9. 10.3390/w9060366.
- Pulvirenti, Luca &Pierdicca, Nazzareno&Chini, Marco & Guerriero, Leila. (2011). "An algorithm for operational flood mapping from Synthetic Aperture Radar (SAR) data using fuzzy logic". *Natural Hazards and Earth System Sciences*. 11. 10.5194/nhess-11-529- 2011.

- Schumann, G., R. Hostache, C. Puech, L. Hoffmann, P. Matgen, F. Pappenberger, and L. Pfister. 2007. "High-Resolution 3-D Flood Information from Radar Imagery for Flood Hazard Management." *IEEE Transactions on Geoscience and Remote Sensing* 45 (6): 1715–1725. doi:10.1109/TGRS.2006.888103.
- Sree, Manju and Kumar, L., and Bhatt, C M and Srinivasa Rao, Goru and Veerubhotla, Bhanumurthy, 2012. "Optimization of Threshold Ranges for Rapid Flood Inundation Mapping by Evaluating Backscatter Profiles of High Incidence Angle SAR Images". *International Journal of Disaster Risk Science*. 2012. 113-122. 10.1007/s13753-012-0011-5. Song J-H, Kang, MS, Song, I, Jun, SM. 2016. "Water balance in irrigation reservoirs considering flood control and irrigation efficiency variation". *Journal of Irrigation and Drainage Engineering* 142(4):04016003 Tavus, Beste&Kocaman, Sultan and Nefesliođlu, Hakan and Gokceoglu, Candan. (2019).
- Twele, André & Cao, Wenxi& Plank, Simon & Martinis, Sandro. 2016. Sentinel-1-based flood mapping: a fully automated processing chain. *International Journal of Remote Sensing*. 37. 2990-3004. 10.1080/ 01431161.2016.1192304.
- Xu Yuan, Xiao-chun Zhang, Xiu-gui Wang, and Yu Zhang, Flood disaster monitoring based on Sentinel-1 data: A case study of Sihui Basin and Huaibei Plain" *China, Water Science and Engineering*, 14(2):2021, Pages 87-96, ISSN 1674-2370, <https://doi.org/10.1016/j.wse.2021.06.001>.
- Wu, S., Liu, R., Yommy, A.S. "SAR image de-speckling using refined Lee filter". In *Proceedings of the 2015 7th International Conference on Intelligent HumanMachine Systems and Cybernetics (IHMSC)*, Hangzhou, China, 26–27 August 2015