

**The effect of presowing treatments with *Glomus mosseae* and GA₃ on the leaves
physiology of *Melia azedarach* seedling**

Abstract

Melia azedarach, a versatile tree belonging to the *Meliaceae* family, presents a significant challenge in achieving successful seed germination for forest plantations. The robust nature of *Melia azedarach* seeds necessitates pre-treatments to overcome physical barriers and enhance water absorption. Natural ecosystems often benefit from the symbiotic relationship between Arbuscular mycorrhizal (AM) fungi and plant roots, which promotes survival and growth. This study examined the impact of *Glomus mosseae*-inoculated soil on *Melia azedarach* seeds treated with pre-sowing techniques at the Nursery of the Forestry Department, CCSHAU, Hisar in 2019. *Glomus mosseae* was sown at a rate of 400–500 sporocarps per kg of soil, and its influence was evaluated in terms of physiological parameters, survival rate, root colonization percentage, and sporocarp count. Each replication of the experiment involved 250 seedlings and was repeated five times. Results demonstrated that soils inoculated with *Glomus mosseae* and treated with gibberellic acid at 200 ppm for 24 hours prior to sowing exhibited significantly higher physiological parameters (chlorophyll and carotenoid content, photosynthesis rate, transpiration rate, and stomatal conductance), survival percentage, root colonization percentage, and sporocarp count (per 100 g of soil). Therefore, the combined use of *Glomus mosseae* and gibberellic acid at 200 ppm for 24 hours is recommended to enhance physiological growth and plant survival in *Melia azedarach*.

Keywords: *Glomus mosseae*, *Melia azedarach*, photosynthesis rate, root colonization (%) and plant survival (%).

Introduction

Arbuscular mycorrhizal fungus (AMF) is a soil microorganism that plays a vital role in establishing a healthy relationship between soil and plants. By forming a symbiotic partnership, mycorrhizal fungi contribute to plant growth and survival by reducing stress factors [1]. These fungi offer several benefits to their host, including enhanced phosphorus uptake [2], increased nitrogen absorption [3], production of plant growth hormones [4], defense against soil-borne diseases [5], and improved plant growth and productivity [6].

The colonization of plant roots by AM fungi has been recognized for its potential as a bio-protectant and biofertilizer [7], providing protection against parasitic fungi and nematodes,

while also promoting plant growth and yield [8]. Around 80% of vascular plants have their roots colonized by AM fungi, making them an essential component of a healthy soil-plant system (Budi et al., 2012) [9]. They contribute to soil quality and improve plant fitness [10]. Neem, a tree species, particularly relies on mycorrhizal fungi, as they colonize its roots extensively [11].

Most plants form symbiotic partnerships with mycorrhizal fungi within their roots, providing an ideal ecological niche for fungal development and completing their sexual cycle [12]. This common symbiotic relationship between AM fungi and plant roots enhances the survival and growth of the majority of plants in natural ecosystems [13]. The primary advantage of mycorrhiza for forest plants is their efficient accumulation of nutrient ions and water in the rhizosphere. By enhancing nutrition, growth, dry matter production, and drought resistance, mycorrhizal fungi facilitate the availability of nutrients and water to both the host plant and the fungus [14].

Melia azedarach, a significant tree species in social forestry projects, is well-known for its therapeutic benefits. Researchers are particularly interested in finding optimal seed germination methods for this species [15]. It is a fast-growing tree commonly planted for its ornamental value along roadways. The wood of *Melia azedarach* is utilized in various applications, including toys, boxes, athletic equipment, musical instruments, furniture, and fuelwood due to its calorific value of 5043-5176 kcal/kg [16]. It serves multiple purposes and is classified as an agro-forestry/social forestry species, making it highly valuable [17].

However, the main challenge in establishing forest plantations of *Melia azedarach* lies in its poor seed germination [15]. [18] suggest that the seeds of *Melia azedarach* have a hard coating, and pre-treatments are used to remove this physical barrier and improve water absorption. This plant exhibits characteristics typical of those highly susceptible to arbuscular mycorrhizal symbiosis, including a coarse root structure and a lack of root hairs. The objective of this study is to explore efficient approaches for maximizing the physiological growth of *Melia azedarach* by utilizing AM fungi and pre-sowing seed treatments.

Materials And Methods

A. Planting materials and study site:

In 2019, an experiment was conducted at the nursery of the Department of Forestry, CCS Haryana Agricultural University in Hisar. During particularly hot summer days, the average monthly maximum and minimum temperatures could reach up to 48°C. The region experiences relative humidity ranging from 5% to 100%, and winter temperatures often drop below freezing, accompanied by frost. The growth and germination assessment utilized

drupes of uniform size. Each treatment involved the random selection of 750 *Melia azedarach* drupes.

B. Experimental design and treatment combinations:

A Complete Randomized Design (CRD) was utilized in the study with twenty-six treatments, including a control group, and five replications per treatment. Each replication involved sowing 250 *Melia azedarach* seeds to assess the effects of pre-sowing treatments. The seeds were subjected to various treatments, such as soaking in tap water for different durations (24, 48 and 72 hours), concentrated sulfuric acid (H₂SO₄) for varying times (4, 6 and 8 minutes), gibberellic acid solutions of different concentrations (200, 300 and 400 ppm) for 24 hours, and cow dung slurry for different durations (2, 4 and 6 days). The treated seeds were sown in two types of soil: normal soil and soil inoculated with *Glomus mosseae*. Additionally, a control treatment involved sowing untreated seeds in non-inoculated soil. The seeds were sown 2-3 cm deep in sterile sandy soil, individually inoculated with *G. mosseae* at a rate of 450-500 sporocarps/kg of soil, in polythene bags. Physiological parameters of the seedlings were determined at 90 and 180 DAS (Days After Sowing). Chlorophyll and carotenoid content were determined using a chemical method. Mature and fully expanded leaves from the middle section of the plant were selected for the measurements. To extract the pigments, 50 mg of fragmented leaf tissue was placed in a vial with 50 ml of di-methyl sulphoxide (DMSO) and heated at 60°C until the tissue lost its chlorophyll (2-4 hours). The resulting liquid extract was then transferred to a graduated tube and brought up to a volume of 10 ml with DMSO. Absorbance readings were taken at 480, 645 and 665 nm using a spectrophotometer with a DMSO blank. Concentrations were calculated using [19] equations, handheld photosynthesis system, LCi-SD Bioscientific Ltd. The procedure involves preparing and calibrating the instrument, attach a leaf, set parameters, activate the system for recording, and collected data is then documented. Additionally, mycorrhizal colonization in roots and sporocarp numbers in the soil were assessed at 60, 120, and 180 DAS. Mycorrhizal colonization was calculated using the method described by [20], and sporocarps were determined according to the method given by [21]. Plant survival percentage was calculated using the following formula.

$$\text{Plant Survival (\%)} = \frac{\text{Total number of seedlings survived}}{\text{Total number of seedlings}} \times 100$$

C. Analysis of Data

Analysis of Variance (ANOVA) was performed to examine the effects of seed treatments, and the Critical Difference at the 5% level of significance was used to determine whether there were significant differences between the means. The statistical analysis was conducted using OPSTAT.

Results

3.1 Effect of pre sowing treatments of seeds in combination with *Glomus mosseae* on physiological growth of *Melia azedarach*

As a result of various pre-sowing treatments, the data in Table 1 indicated a considerable increase in total chlorophyll of *Melia azedarach* at 90 and 180 days after sowing. At 90 DAS, Gibberellic acid 200 ppm for 24 hrs with *Glomus mosseae* treatment had considerably greater total chlorophyll (23.12 µg/ml), followed by Gibberellic acid 300 ppm for 24 hrs with *Glomus mosseae* (21.70 µg/ml), and the lowest total chlorophyll in the control, 12.30 µg/ml. At 180 DAS, the total chlorophyll in the Gibberellic acid 200 ppm for 24 hrs with *Glomus mosseae* treatment was significantly higher (30.32 µg/ml), followed by the Gibberellic acid 300 ppm for 24 hrs with *Glomus mosseae* (28.71 µg/ml), while the lowest level was found in the control, which was 17.01 µg/ml.

The data on carotenoid content presented in Table 1 revealed that there was no significant difference found among all the pre-sowing treatments. At 90 DAS, Gibberellic acid 200 ppm for 24 hrs with *Glomus mosseae* treatment had a considerably greater carotenoid content (5.22 µg/ml), followed by Gibberellic acid 300 ppm for 24 hrs with *Glomus mosseae* (5.12 µg/ml), with the control having the lowest carotenoid content (4.85 µg/ml). At 180 DAS, the carotenoid content was substantially greater in the Gibberellic acid 200 ppm for 24 hours with *Glomus mosseae* treatment (5.70 µg/ml), followed by Gibberellic acid 300 ppm for 24 hours with *Glomus mosseae* (5.59 µg/ml), while the lowest level was found in the control, or 5.22 µg/ml.

The analysis of data presented in Table 2 revealed significant influence of different pre-sowing treatments on photosynthesis of *Melia azedarach* at 90 and 180 days after sowing.

At 90 and 180 DAS, the photosynthesis was significantly higher in Gibberellic acid 200 ppm for 24 hrs with *Glomus mosseae* treatment (6.59 and 9.99 µ mol CO₂ m⁻² s⁻¹, respectively)

followed by Gibberellic acid 300 ppm for 24 hrs with *Glomus mosseae* (6.11 and 9.35 $\mu\text{ mol CO}_2\text{ m}^{-2}\text{ s}^{-1}$, respectively) and Gibberellic acid 400 ppm for 24 hrs with *Glomus mosseae* (6.05 and 9.28 $\mu\text{ mol CO}_2\text{ m}^{-2}\text{ s}^{-1}$, respectively) with lowest photosynthesis in control *i.e.* 3.85 and 6.58 $\mu\text{ mol CO}_2\text{ m}^{-2}\text{ s}^{-1}$, respectively.

It is quite evident from the data presented in Table 2 that the stomatal conductance of *Melia azedarach* was significantly increased by different pre-sowing treatments inoculated with *Glomus mosseae* as compared to seeds without treatment sown in *Glomus mosseae* and control. The data was recorded at 90 and 180 days after sowing (DAS). At 90 DAS, the stomatal conductance was significantly higher in Gibberellic acid 200 ppm for 24 hrs with *Glomus mosseae* treatment (0.199 $\text{mmol m}^{-2}\text{ s}^{-1}$) followed by Gibberellic acid 300 ppm for 24 hrs with *Glomus mosseae* (0.188 $\text{mmol m}^{-2}\text{ s}^{-1}$). Whereas, stomatal conductance in *Glomus mosseae* was 0.170 $\text{mmol m}^{-2}\text{ s}^{-1}$ with lowest stomatal conductance in control *i.e.* 0.107 $\text{mmol m}^{-2}\text{ s}^{-1}$. At 180 DAS, the stomatal conductance was significantly higher in Gibberellic acid 200 ppm for 24 hrs with *Glomus mosseae* treatment (0.312 $\text{mmol m}^{-2}\text{ s}^{-1}$) followed by Gibberellic acid 300 ppm for 24 hrs with *Glomus mosseae* (0.289 $\text{mmol m}^{-2}\text{ s}^{-1}$) and Gibberellic acid 400 ppm for 24 hrs with *Glomus mosseae* (0.281 $\text{mmol m}^{-2}\text{ s}^{-1}$) whereas, minimum was recorded in control *i.e.* 0.217 $\text{mmol m}^{-2}\text{ s}^{-1}$.

The effect of pre-sowing treatments on transpiration rate of *Melia azedarach* has been presented in Fig. 1. Transpiration rate of *Melia azedarach* due to different pre-sowing treatments was found statistically significant at 90 and 180 days after sowing (DAS). At 90 DAS, the transpiration rate was significantly higher in Gibberellic acid 200 ppm for 24 hrs with *Glomus mosseae* treatment (4.14 $\text{mmol H}_2\text{O m}^{-2}\text{ s}^{-1}$) followed by Cow dung slurry for 6 days with *Glomus mosseae* (3.19 $\text{mmol H}_2\text{O m}^{-2}\text{ s}^{-1}$) and Conc. H_2SO_4 for 8 min with *Glomus mosseae* (3.19 $\text{mmol H}_2\text{O m}^{-2}\text{ s}^{-1}$) with lowest transpiration rate in control *i.e.* 1.81 $\text{mmol H}_2\text{O m}^{-2}\text{ s}^{-1}$.

At 180 DAS, the transpiration rate was significantly higher in Gibberellic acid 200 ppm for 24 hrs with *Glomus mosseae* treatment (5.88 $\text{mmol H}_2\text{O m}^{-2}\text{ s}^{-1}$) followed by Cow dung slurry for 6 days with *Glomus mosseae* (5.18 $\text{mmol H}_2\text{O m}^{-2}\text{ s}^{-1}$) and Conc. H_2SO_4 for 8 min with *Glomus mosseae* (5.12 $\text{mmol H}_2\text{O m}^{-2}\text{ s}^{-1}$) whereas, minimum was recorded in control *i.e.* 3.45 $\text{mmol H}_2\text{O m}^{-2}\text{ s}^{-1}$.

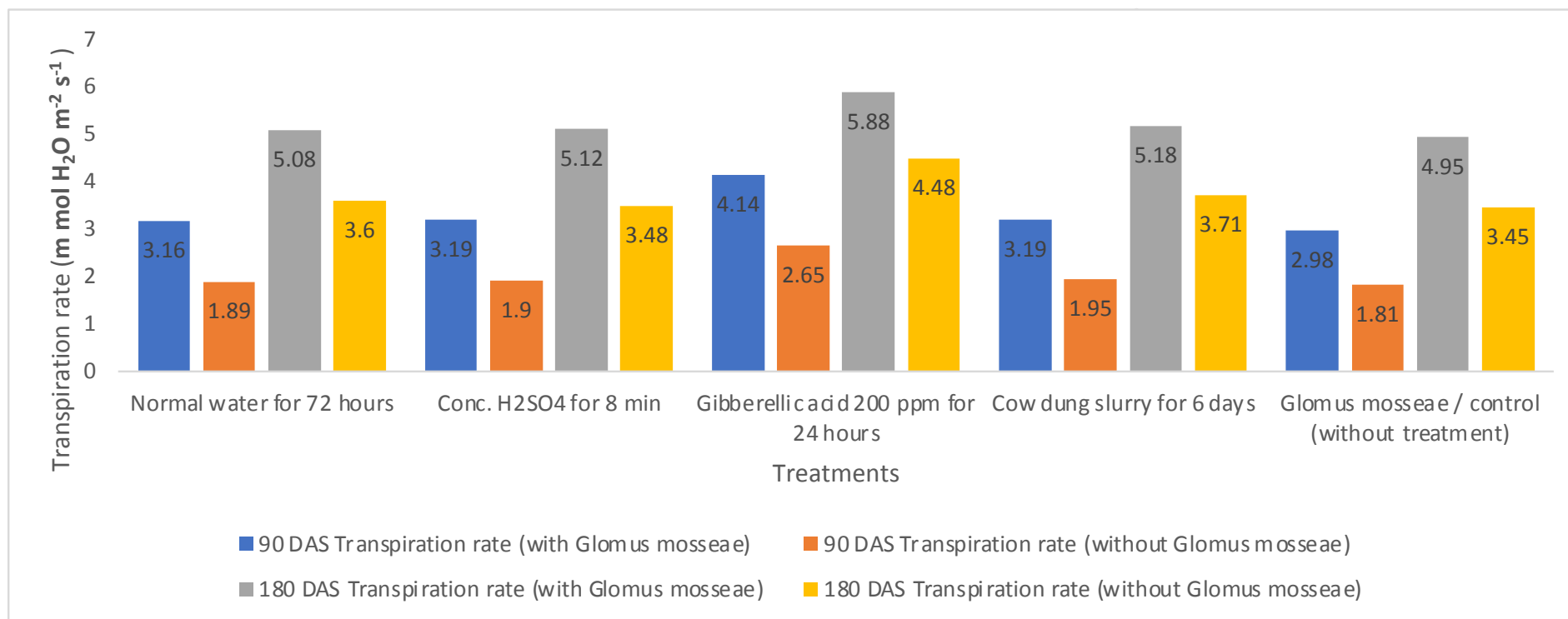
Table 1: Effect of pre sowing treatments of seeds in combination with *Glomus mosseae* on chlorophyll and carotenoid content of *Melia azedarach*

Treatments	With <i>Glomus mosseae</i>				Without <i>Glomus mosseae</i>			
	Total chlorophyll		Carotenoid content		Total chlorophyll		Carotenoid content	
	($\mu\text{g/ml}$)		($\mu\text{g/ml}$)		($\mu\text{g/ml}$)		($\mu\text{g/ml}$)	
	90 DAS	180 DAS	90 DAS	180 DAS	90 DAS	180 DAS	90 DAS	180 DAS
Normal water for 24 hours	18.91	23.66	4.98	5.31	12.56	17.15	4.85	5.23
Normal water for 48 hours	19.23	23.91	4.99	5.29	13.25	17.98	4.88	5.24
Normal water for 72 hours	19.55	24.17	4.99	5.30	13.32	18.17	4.86	5.22
Conc. H_2SO_4 for 4 min	19.09	23.91	5.00	5.32	13.06	17.40	4.86	5.22
Conc. H_2SO_4 for 6 min	19.53	24.17	5.02	5.30	13.13	17.73	4.86	5.23
Conc. H_2SO_4 for 8 min	19.42	24.49	5.02	5.31	12.81	17.64	4.87	5.22
Gibberellic acid 200 ppm for 24 hours	23.12	30.32	5.22	5.70	17.57	22.25	4.93	5.28
Gibberellic acid 300 ppm for 24 hours	21.70	28.71	5.12	5.59	16.57	20.91	4.92	5.26
Gibberellic acid 400 ppm for 24 hours	21.05	27.37	5.09	5.56	15.14	20.01	4.91	5.25
Cow dung slurry for 2 days	19.23	24.07	4.98	5.32	12.62	17.64	4.87	5.24
Cow dung slurry for 4 days	19.48	24.40	4.97	5.34	13.06	17.89	4.85	5.23
Cow dung slurry for 6 days	19.30	24.72	4.98	5.32	13.32	18.15	4.89	5.23
<i>Glomus mosseae</i> / control	18.84	23.52	4.85	5.30	12.30	17.01	4.96	5.22
C.D. at 5% level of significance	1.29	1.67	N/S	N/S	1.29	1.67	N/S	N/S

Table 2: Effect of pre sowing treatments of seeds in combination with *Glomus mosseae* on photosynthesis and stomatal conductance and carotenoid content of *Melia azedarach*

Treatments	With <i>Glomus mosseae</i>				Without <i>Glomus mosseae</i>			
	Photosynthesis ($\mu\text{ mol CO}_2\text{ m}^{-2}\text{ s}^{-1}$)		Stomatal conductance ($\text{mmol m}^{-2}\text{ s}^{-1}$)		Photosynthesis ($\mu\text{ mol CO}_2\text{ m}^{-2}\text{ s}^{-1}$)		Stomatal conductance ($\text{mmol m}^{-2}\text{ s}^{-1}$)	
	90 DAS	180 DAS	90 DAS	180 DAS	90 DAS	180 DAS	90 DAS	180 DAS
Normal water for 24 hours	5.41	8.95	0.175	0.249	3.88	6.60	0.107	0.219
Normal water for 48 hours	5.42	8.90	0.172	0.250	3.90	6.65	0.110	0.219
Normal water for 72 hours	5.44	8.99	0.171	0.252	3.96	6.85	0.111	0.220
Conc. H ₂ SO ₄ for 4 min	5.39	8.92	0.173	0.253	3.98	6.75	0.109	0.218
Conc. H ₂ SO ₄ for 6 min	5.49	8.93	0.172	0.256	3.89	6.65	0.106	0.218
Conc. H ₂ SO ₄ for 8 min	5.55	8.99	0.171	0.258	3.95	6.64	0.108	0.217
Gibberellic acid 200 ppm for 24 hours	6.59	9.99	0.199	0.312	5.12	8.40	0.162	0.237
Gibberellic acid 300 ppm for 24 hours	6.11	9.35	0.188	0.289	4.88	7.95	0.155	0.236
Gibberellic acid 400 ppm for 24 hours	6.05	9.28	0.181	0.281	4.75	7.85	0.148	0.234
Cow dung slurry for 2 days	5.61	8.91	0.174	0.249	4.01	6.90	0.108	0.220
Cow dung slurry for 4 days	5.52	8.95	0.175	0.250	3.99	6.90	0.109	0.224
Cow dung slurry for 6 days	5.60	8.98	0.175	0.250	4.00	6.84	0.110	0.221
<i>Glomus mosseae</i> / control	5.34	8.89	0.170	0.248	3.87	6.58	0.107	0.217
C.D. at 5% level of significance	0.38	0.61	0.011	0.018	0.38	0.61	0.011	0.018

Fig. 1: Effect of pre sowing treatments of seeds in combination with and without *Glomus mosseae* on transpiration rate at 90 and 180 DAS



3.2 Effect of pre sowing treatments of seeds inoculated with *Glomus mosseae* on plant survival (%) of *Melia azedarach*

The plant survival (%) as influenced by different pre-sowing treatment are presented in Table 3. Plant survival percentage was recorded at 60, 120 and 180 days after sowing. At 60 DAS, the plant survival percentage was significantly higher in treatment with Gibberellic acid 200 ppm for 24 hrs with *Glomus mosseae* (95.21%) followed by Gibberellic acid 300 ppm for 24 hrs with *Glomus mosseae* (90.51%). Whereas, minimum was recorded in control *i.e.* 75.45%. At 120 DAS, the plant survival percentage was significantly higher in treatment with Gibberellic acid 200 ppm for 24 hrs with *Glomus mosseae* (94.32%) followed by Gibberellic acid 300 ppm for 24 hrs with *Glomus mosseae* (88.64%) and Gibberellic acid 400 ppm for 24 hrs with *Glomus mosseae* (87.65%). Whereas, minimum was recorded in control *i.e.* 65.49%. At 180 DAS, the plant survival percentage was significantly higher in treatment with Gibberellic acid 200 ppm for 24 hrs with *Glomus mosseae* (93.52%) followed by Gibberellic acid 300 ppm for 24 hrs with *Glomus mosseae* (87.94%) and Gibberellic acid 400 ppm for 24 hrs with *Glomus mosseae* (86.49%). Whereas, minimum was recorded in control *i.e.* 55.56%.

Table 3: Effect of pre sowing treatments of seeds inoculated with *Glomus mosseae* on plant survival (%) of *Melia azedarach* at 60, 120 and 180 DAS

Treatments	Plant survival (%) (with <i>Glomus mosseae</i>)			Plant survival (%) (without <i>Glomus mosseae</i>)		
	60 DAS	120 DAS	180 DAS	60 DAS	120 DAS	180 DAS
Normal water for 24 hours	87.94	86.70	85.79	76.52	66.87	56.96
Normal water for 48 hours	88.58	88.01	86.91	76.63	67.95	60.52
Normal water for 72 hours	86.94	85.70	83.79	76.90	67.98	60.14
Conc. H ₂ SO ₄ for 4 min	85.94	84.70	83.72	75.90	66.97	60.98
Conc. H ₂ SO ₄ for 6 min	88.52	88.52	86.71	76.21	64.56	54.95
Conc. H ₂ SO ₄ for 8 min	88.20	88.10	86.11	76.95	66.62	57.96
Gibberellic acid 200 ppm for 24 hours	95.21	94.32	93.52	84.69	83.64	81.57
Gibberellic acid 300 ppm for 24 hours	90.51	88.64	87.94	82.59	80.56	79.82
Gibberellic acid 400 ppm for 24 hours	88.99	87.65	86.49	78.95	74.59	72.65
Cow dung slurry for 2 days	88.11	88.45	86.47	76.21	68.95	55.21

Cow dung slurry for 4 days	89.34	88.14	85.48	77.69	66.97	59.21
Cow dung slurry for 6 days	88.10	88.13	86.46	77.35	66.94	58.61
<i>Glomus mosseae</i> / control	88.94	88.70	86.79	75.45	65.49	55.56
C.D. at 5% level of significance	6.29	6.00	5.71	6.29	6.00	5.71

3.3 Effect of pre sowing treatments of seeds inoculated with *Glomus mosseae* on root colonization (%) and number of sporocarp (per 100 g of soil) of *Melia azedarach*

The result related to root colonization (%) at different observation period are shown in Table 4. Root colonization percentage was recorded at 60, 120 and 180 days after sowing. Similar trend of root colonization (%) was observed at 60, 120 and 180 DAS and the root colonization percentage was significantly higher in treatment with Gibberellic acid 200 ppm for 24 hrs with *Glomus mosseae* (33.89, 60.23 and 79.34%, respectively) followed by Gibberellic acid 300 ppm for 24 hrs with *Glomus mosseae* (30.25, 55.64 and 75.23%, respectively) and Gibberellic acid 400 ppm for 24 hrs with *Glomus mosseae* (28.69, 50.69 and 70.25%, respectively). Whereas, minimum was recorded in Normal water for 24 hrs with *Glomus mosseae* treatment at 60 and 180 DAS i.e. 21.35 and 60.55%, respectively and at 120 DAS minimum was recorded in *Glomus mosseae* treatment i.e. 40.56%. whereas no root colonization (%) or zero root colonization (%) was recorded in treatments without *Glomus mosseae*.

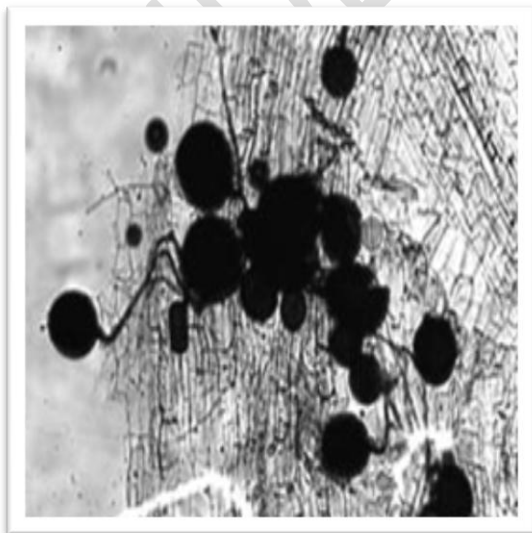


Fig 2. (a) *Glomus mosseae* spores in roots of *Melia azedarach* by using phase contrast microscope (b) *Glomus mosseae* sporocarp isolated from soil

In the present study, number of sporocarp in soil was recorded at 60, 120 and 180 days after sowing and presented in Table 4. Number of sporocarp (per 100 g of soil) followed the similar, trend as that of root colonization (%) at 60, 120 and 180 days after sowing. At 60 DAS, the number of sporocarp was significantly higher in treatment with Gibberellic acid 200 ppm for 24 hrs with *Glomus mosseae* (188.20) followed by Gibberellic acid 300 ppm for 24 hrs with *Glomus mosseae* (176.97) and Gibberellic acid 400 ppm for 24 hrs with *Glomus mosseae* (170.26). Whereas, minimum was recorded in Normal water for 24 hrs with *Glomus mosseae* treatment *i.e.* 148.36. Similarly, 120 and 180 DAS, the number of sporocarp was significantly higher in treatment with Gibberellic acid 200 ppm for 24 hrs with *Glomus mosseae* (289.36 and 388.73, respectively) followed by Gibberellic acid 300 ppm for 24 hrs with *Glomus mosseae* (278.54 and 369.78, respectively). Whereas, minimum was recorded in *Glomus mosseae* treatment *i.e.* 250.12 at 120 DAS and at 180 DAS in Normal water for 24 hrs with *Glomus mosseae* treatment *i.e.* 338.24.

4. Discussion

Physiological parameters of *Melia azedarach* like chlorophyll, carotenoid content, photosynthesis, transpiration rate and stomatal conductance were found significantly higher in Gibberellic acid 200 ppm for 24 hrs with *Glomus mosseae* followed by Gibberellic acid 300 ppm for 24 hrs with *Glomus mosseae* and Gibberellic acid 400 ppm for 24 hrs with *Glomus mosseae* except for carotenoid content which had no significant difference among treatments. [22] conducted similar experiment to investigate the effects of Gibberellic acid on chlorophyll content in *Syzygium samarangense* and results revealed increase in chlorophyll content on treating with Gibberellic acid. [23] in maize reported that application of GA₃ improve the water stress tolerance by maintaining membrane permeability, enhancing chlorophyll concentration in leaves. [24] showed that the effect of Gibberellic acid on photosynthesis of pea seedling and reported higher photosynthesis on treating with Gibberellic acid which is similar to our findings. Also, [25] investigated on wheat plant and reported the effect of Gibberellic acid on growth, photosynthesis and chlorophyll content. Similar, work was done by [26] and reported the effect of GA₃ on photosynthesis and chlorophyll content of *Camellia oleifera* leaves. This indicate that addition of high GA₃ inhibits chlorophyll synthesis in the plants.

[27] showed similar work on grape and results indicated that inoculation with mycorrhiza fungi had a positive effect on chlorophyll index in a leaf of *Glomus mosseae* fungi. *Glomus intraradices* and *Glomus fasciculatum* had positive effect on transpiration rate and stomatal conductance. Whereas, *Glomus fasciculatum* fungi had highest positive effect on the photosynthesis. There were significant effect on chlorophyll content, photosynthesis, transpiration rate and stomatal conductance due to the effect of different treatments on plant growth parameters. This rise a question on the maturity of leaf from which the chlorophyll was measured. For this case, it is very important to show the position of the leaf, from which chlorophyll was measured, to clarify whether the *Glomus fasciculatum* affected the chlorophyll content, etc. [28] reported that arbuscular mycorrhizal fungi inoculation was a promising strategy in enhancing photosynthesis content and stomatal conductance of *Zelkova serrata* leaves. Also, [29] showed the effect of arbuscular mycorrhiza (AM) plants on stomatal behavior and water use efficiency and reported that the rate of stomatal conductance was higher in AM than in non-AM plants.

The Significantly higher values of root colonization (%), number of sporocarp (per 100 g of soil) and plant survival percentage was reported in Gibberellic acid 200 ppm for 24 hrs with *Glomus mosseae* (79.34%, 388.73 and 93.52% respectively) followed by Gibberellic acid 300 ppm for 24 hrs with *Glomus mosseae* and Gibberellic acid 400 ppm for 24 hrs +

Glomus mosseae. For this case, it is very important to understand the effect of Gibberellic acid on root colonization (%), number of sporocarp (per 100 g of soil) and plant survival percentage. Several, biotic and abiotic factors also effects plant survival percentage over time. [30] stated that there are three conditions that must be fulfilled before germination begins, viz., seed must be viable, adequate inner conditions (eg. living embryo, physiological and biochemical factors etc.) and appropriate environmental condition. [31] showed that Gibberellic acids were required for arbuscular mycorrhiza development in the legume *Lotus japonicas*. [32] investigated that there was an positive interactive effect between Gibberellic acid and arbuscular mycorrhiza fungi which alleviates growth by modifying the hormonal balance of the *Solanum lycopersicum*. [33] showed that Gibberellic acid and abscisic acid perform essential functions and antagonize each other by oppositely regulating arbuscular mycorrhiza formation in tomato roots. [34] found highest root colonization of spota plant treated with *Glomus mosseae* than control. [35] observed maximum root colonization in *Glomus* sp. inoculated plants whereas no inoculation was found in uninoculated plants of *Acacia* sp. [36] found more colonization in AM inoculated plants than non-inoculated *Jatropha curcas L.* plants. [37] reported root colonization % and spore population in different agroforestry trees. [9] reported on inoculation *Melia azedarach* which showed enhanced root colonization (%), increased height, diameter, shoot biomass and root biomass in comparison to the uninoculated control plant. Based on the findings, it can be inferred that the *Glomus spp.* leads to a significant increase in nearly all the observed parameters, suggesting that the presence of *Glomus mosseae* greatly enhances the physiological mechanism.

5. Conclusion

The combined *Glomus mosseae* inoculation and pre-sowing treatment with Gibberellic acid (200 ppm for 24 hours) significantly enhanced physiological growth (chlorophyll content, carotenoid content, photosynthesis rate, transpiration rate, and stomatal conductance) and plant survival in *Melia azedarach* seedlings. Furthermore, this combination led to higher sporocarp numbers and increased root colonization compared to the control and seedlings without any treatment inoculated with *Glomus mosseae*. These results emphasize the successful establishment of *Melia azedarach* seedlings in nursery conditions by employing *Glomus mosseae* soil treatment combined with Gibberellic acid pre-sowing treatment.

8. References:

1. Sylvia, D. M. and Williams, S. E. (1992). Vesicular-arbuscular mycorrhizae and environmental stress. *Mycorrhizae in Sustainable Agriculture*, **54**: 101-124.

2. Goussous, S. J. and Mohammad, M. J. (2009). Comparative effect of two arbuscular mycorrhizae and N and P fertilizers on growth and nutrient uptake of onions. *International Journal of Agriculture and Biology*, **11**: 463-467.
3. Rotor, A. V. and Delima, P. C. (2010). Mycorrhizal association, N fertilization and biocide application on the efficacy of bio-N on corn (*Zea mays*. L) growth and productivity. *International Journal of Scientometric Research*, **2**(3): 267-290.
4. Herrera- Medina, M. J., Steinkellner, S., Vierheilig, H., Ocampo Bote, J. A. and García Garrido, J. M. (2007). Abscisic acid determines arbuscule development and functionality in the tomato arbuscular mycorrhiza. *New Phytologist*, **175**(3): 554-564.
5. Bakhtiar, Y., Yahya, S., Sumaryono, W., Sinaga, M. S., Budi, S. W. and Tajuddin, T. (2010). Isolation and identification of Mycorrhizosphere bacteria and their antagonistic effects towards *Ganoderma boninense* in vitro. *Microbiology Indonesia*, **4**(2): 9-9.
6. Duponnois, R., Colombeta, A., Hienb, V. and Thioulouse, J. (2005). The mycorrhizal fungus *Glomus intraradices* and rock phosphate amendment influence plant growth and microbial activity in the rhizosphere of *Acacia holosericea*. *Soil Biology and Biochemistry*, **37**(8): 1460-1468.
7. Berruti, A., Lumini, E., Balestrini, R. and Bianciotto, V. (2016). Arbuscular mycorrhizal fungi as natural biofertilizers: let's benefit from past successes. *Frontiers in microbiology*, **6**:1559.
8. Wei, D. M. and Williams, S. E. (2016). Vesicular- arbuscular mycorrhizae and environmental stress. *Mycorrhizae in Sustainable Agriculture*, **54**: 101-124.
9. Budi, S. W., Bakhtiar, Y. and May, N. L. (2012) Bacteria associated with arbuscula mycorrhizal spores *Gigaspora margarita* and their potential for stimulating root mycorrhizal colonization and neem (*Melia azedarach* Linn) seedling growth. *Microbiol Indones*, **6**(4):180-188.
10. Barea, J. M., Azcón, R. and Azcon-Aguilar, C. (2002). Mycorrhizosphere interactions to improve plant fitness and soil quality. *Antonie van leeuwenhoek*, **81**(1-4): 343-351.
11. Habte, M., Muruleedhara, B. N. and Ikawa, H. (1993). Response of neem (*Azadirachta indica*) to soil P concentration and mycorrhizal colonization. *Arid Land Research and Management*, **7**: 327-333.
12. Sandeep, C., Mohan, V. and Viswanath, S. (2015). Significance of ectomycorrhizae in forest ecosystems of India. *International Journal of Plant, Animal and Environment Science*, **5**:23-31.
13. Lipnicki, L. I. (2015). The role of symbiosis in the transition of some eukaryotes from aquatic to terrestrial environments. *Symbiosis*, **65**(2): 39-53.
14. Luyindula, N. and Haque, I. (1992). Effect of Rhizobium inoculation and phosphorus on growth and nitrogen fixation in tree legumes grown on highland Vertisols. *Biological nitrogen fixation and sustainability of tropical agriculture. Wiley-Sayce Co-Publication, Chichester*, 109-112.
15. Azad, M. S., Al-musa, Z. M. and Matin, A. M. (2010). Effect of pre-sowing treatments on seed germination of *Melia azedarach*. *Journal of Forestry Research*, **21**(2): 193-196.
16. Shukla, K. S. and Bhatanagar, R. C. (1988). Suitability of Indian timbers for compressed wood shuttle blocks. *Journal of Timber Development Association India*, **34**(1) : 53-58.
17. Gupta, R. K. (1993). Multipurpose trees for agroforestry. *Oxford and IBH publishing company, New Delhi* p. 588.
18. Wulandini, R. and Widayani, N. (2007). *Melia azedarach* L. Seed Leaflet. *Forest & Landscape, Denmark*, 117.
19. Wellburn, A. R. (1994). The spectral determination of Chlorophyll a and b, as well as total carotenoids, using various solvents with spectrophotometers of different resolution. *Journal of Plant Physiology*, **144**: 307-313.
20. Phillips, J. M. and Hayman, D. S. (1970). Improved procedures for clearing roots and staining parasitic vesicular-arbuscular mycorrhizal fungi for rapid assessment of infection. *Transactions of the British Mycological Society*, **55**: 158-161.

21. Gerdemann, J. W. and Nicolson, T. H. (1963). Spores of mycorrhizal endogone species extracted from soil by wet sieving and decanting. *Transactions of the British Mycological Society*, **46**: 235-244.
22. Khandaker, M. M., Alebidi, A. I., Hossain, A. S., Mat, N. and Boyce, A. N. (2015). Physiological and biochemical properties of three cultivars of wax apple (*Syzygium samarangense* [Blume] Merrill & LM Perry) fruits. *Journal of Sustainability Science and Management*, **10**(1): 66-75.
23. Kaya, C., Tuna, L. and Higgs, D. (2006). Effect of silicon on plant growth and mineral nutrition of maize grown under water-stress conditions. *Journal of Plant Nutrition*, **29**(8): 1469-1480.
24. Romanowska, E., Parys, E. and Poskuta, J. (1984). The effect of light quality and gibberellic acid (GA₃) on photosynthesis and respiration rates of pea seedlings. *Photosynthesis Research*, **5**(3): 205-214.
25. Iftikhar, A., Ali, S., Yasmeen, T., Arif, M. S., Zubair, M., Rizwan, M. and Soliman, M. H. (2019). Effect of gibberellic acid on growth, photosynthesis and antioxidant defense system of wheat under zinc oxide nanoparticle stress. *Environmental Pollution*, **254**: 109-113.
26. Wen, Y., Su, S. C., Ma, L. Y. and Wang, X. N. (2018). Effects of gibberellic acid on photosynthesis and endogenous hormones of *Camellia oleifera* Abel. in 1st and 6th leaves. *Journal of Forest Research*, **23**(5):309-317.
27. Aslanpour, M., Baneh, H. D., Tehranifar, A. and Shoor, M. (2019). Effect of mycorrhizal fungi on macronutrients and micronutrients in the white seedless grape roots under the drought conditions. *International Transaction Journal of Engineering, Management and Applied Sciences & Technologies*, **10**(3): 397-408.
28. Wang, J., Fu, Z., Ren, Q., Zhu, L., Lin, J., Zhang, J. and Yue, J. (2019). Effects of arbuscular mycorrhizal fungi on growth, photosynthesis, and nutrient uptake of *Zelkova serrata* (Thunb.) Makino seedlings under salt stress. *Indian Forester*, **10**(2): 186.
29. Ruiz-Lozano, J. M., and Aroca, R. (2010). Host response to osmotic stresses: stomatal behaviour and water use efficiency of arbuscular mycorrhizal plants. *Arbuscular mycorrhizas: physiology and function*, pp. 239-256.
30. Hartman, H. T. and Kester, D. E. (1983). Plant propagation: principles and practices. *Prentice-Hall, New Gersy, USA*, **4**: 662.
31. Takeda, N., Handa, Y., Tsuzuki, S., Kojima, M., Sakakibara, H. and Kawaguchi, M. (2015). Gibberellins interfere with symbiosis signaling and gene expression and alter colonization by arbuscular mycorrhizal fungi in *Lotus japonicus*. *Plant Physiology*, **167**(2): 545-557.
32. Khalloufi, M., Martínez, A. C., Lachaâl, M., Karray, B. N., Pérez, A. F. and Albacete, A. (2017). The interaction between foliar GA₃ application and arbuscular mycorrhizal fungi inoculation improves growth in salinized tomato (*Solanum lycopersicum* L.) plants by modifying the hormonal balance. *Journal of Plant Physiology*, **214**:134-144.
33. Rodríguez, M., J. A., Huertas, R., Ho-Plágaro, T., Ocampo, J. A., Turečková, V., Tarkowská, D. and García-Garrido, J. M. (2016). Gibberellin–abscisic acid balances during arbuscular mycorrhiza formation in tomato. *Frontiers in Plant Science*, **7**: 1273.
34. Saritha, B., Panneerselvam, P., Mohandas, S., Sulladmath, V. V. and Ravindrababu, P. (2014). Studies on host preference of *Glomus* sp and their synergistic effect on sapota (*Manilkara achras* (mill) Forsberg) seedlings growth. *Plant Archives*, **14**(2):701-706.
35. Jasper, D. A., Abbott, L. K. and Robson, A. D. (1989). The loss of VA mycorrhizal infectivity during bauxite mining may limit the growth of *Acacia pulchella*. *Australian Journal of Botany*, **37**(1): 33-42.
36. Jha, A., Kamalvanshi, M., Kumar, A., Chakravarty, N., Shukla, A. and Dhyani, S. K. (2014). The effects of arbuscular mycorrhizal inoculations and cotyledon removal on early seedling growth of *Pongamia pinnata*. *Turkish Journal of Botany*, **38**(3):526-535.

37. Mridha, M. A. U. and Dhar, P. P. (2007). Biodiversity of arbuscular mycorrhizal colonization and spore population in different agroforestry trees and crop species growing in Dinajpur, Bangladesh. *Journal of Forestry Research*, **18**(2): 91-96.

UNDER PEER REVIEW

UNDER PEER REVIEW