

## Original Research Article

### Robotic colorectal surgery: a single tertiary care experience

#### ABSTRACT

**Introduction** - Over the past two decades, minimally invasive surgery has revolutionized general surgery. The advantages of minimally invasive surgery, including reduced postoperative pain, a shorter hospital stay, return to normal function, and better cosmesis. **Materials and methods** This study encompasses 50 patients who underwent Robotic rectal cancer surgery for clinical, radiological, endoscopic and pathologically diagnosed adenocarcinoma. **Results** In this study of 50 patients who underwent Robotic rectal we observed the most frequent age group was above age of 46 years with male predisposition. The most commonly performed Robotic surgery was Anterior Resection which was done in 43 among 50 patients. Commonly encountered T STAGE T2 and T3 with 20 and 11 patients respectively, mean operative time in our study was 240 minutes with RO resection and TME performed more than in 95% of patients with median lymph node retrieval of 17. Analyzing the date of operative time BMI we found it to be statistically significant with P-value of less than 0.005 reflecting that less operative for patients lower BMI. **CONCLUSION** In this study we concluded that Robotic Rectal Surgery is safe, effective alternative in terms of short perioperative outcomes like reduced hospital stay, better recovery especially in lower BMI.

Introduction - Over the past two decades, minimally invasive surgery has revolutionised general surgery. the advantages of minimally invasive surgery, including reduced postoperative pain, a shorter hospital stay, return to normal function, and better cosmesis [1]. By offering reliable 3-D views via a surgeon-controlled camera, angulated instruments with 7 degrees of freedom, noticeably enhanced ergonomics, and tremor filtering, robotic surgical systems were created to overcome the constraints of laparoscopic surgery. Over the past ten years, numerous surgical specialties have adopted robotic surgery at an increasing with good results [2]. Rectal cancer management has seen a significant wave of change during the past 20 years from many angles. The use of neoadjuvant multimodal chemoradiation therapy for locally advanced stage disease, optimization of surgical technique with nerve preservation, and the advent of complete mesorectal excision (TME) were all wise transitions from open to minimally invasive and robotic procedures [3]. In addition to having lower conversion rates for rectal resections as compared to laparoscopic ones, robotic surgery also has a noticeably shorter learning curve and requires fewer patients to become adept, especially for surgeons who are less experienced with laparoscopy [4].

#### EVOLUTION OF ROBOTIC SURGERY-

Robotic surgery was first used in a reported in 1985. This is when a delicate neurosurgery biopsy was performed using the PUMA 560 robotic surgical arm during a non-laparoscopic procedure. When employed in minimally invasive operations like laparoscopies, which commonly use flexible fibre optic cameras, the robotic system enabled a successful robotic surgery and the possibility for increased precision. The first laparoscopic robotic surgery, a cholecystectomy, was performed in 1987, The same PUMA system was employed the following year to complete a transurethral resection in robotic surgery. The first system to be authorised by the Food and Drug Administration (FDA) for use in endoscopic surgery was the AESOP

system created by Computer Motion in 1990. [The da Vinci Surgery System made history in 2000](#) when it became the first robotic surgery system to be FDA-approved for general laparoscopic surgery. Its forerunners depended on endoscopes and a large number of surgical helpers to carry out operations. [The three-dimensional magnification screen on the da Vinci robotic surgery system gives physicians a clear, high-resolution picture of the surgical site.](#) From the early, large-armed systems like the PUMA 560, the one-centimeter surgical arms represent a tremendous advancement in robotic surgery. The operating arms' "endo-wrist" features exactly duplicate the surgeon's [deft movements at the controls](#), increasing precision in constrained operating environments. The ongoing addition of Artificial intelligence to this machine has revolutionised the art of [surgery to next level](#) and upcoming more advances in this field will lead to drastic frameshift in surgical approach and management of surgical pathologies.

### TOTAL MESORECTAL EXCISION AND ROBOTICS

Greater than 1 mm [distance from the tumour](#) tissue to the surgical radial margin is referred to as a clear circumferential resection margin (CRM) of rectal cancer. TME, according to consensus, is essential for positive oncological outcomes. In comparison to earlier traditional dissection, TME surgery had a decreased local recurrence (LR) rate < 10% [5]. Currently, TME surgery is regarded as the therapeutic approach for locally advanced rectal cancer when is paired with neoadjuvant chemoradiation . TME of lower rectal cancer is challenging even in the hands of skilled surgeons, particularly in patients with a narrow pelvis, men, obese patients, anteriorly placed lesions, large tumours, or patients who have received neoadjuvant chemoradiotherapy. Furthermore, even if the mesentery can be entirely removed, it is extremely difficult to protect the pelvic nerve, inferior epigastric nerve, and superior epigastric nerve, which are essential for preserving sexual and urogenital function. These factors have greatly increased the recognition of robotic techniques in TME of lower rectal tumours [6].

Materials and methods

#### DATA COLLECTION.

This study encompasses 50 patients who [underwent](#) Robotic rectal cancer surgery for [clinical, radiological, endoscopic and pathologically diagnosed adenocarcinoma](#). This study was carried in KIMS (Krishna institute of medical science) [Telangana India](#) a tertiary care centre bestowed with [widw armamentarium advanced surgeries from all varieties of transplant surgeries and Robotic procedures](#). Our institute is known for performing all [advaced Robotic percedures](#).in this study we analysed the [baseline characteristics and short-term surgical outcomes of all elective patients undergoing robotic rectal cancer surgery](#). Data was prospectively collected from january 2018 to june 2022. [All data were gathered from maintained databases](#). Age, body mass index (BMI), gender, American Society of Anaesthesiologists (ASA) grade, neoadjuvant radiation, the procedure that was performed, and pathological T stage were among the baseline parameters analysed. Operative time, and conversion to open were all included in the perioperative data (defined as any incision needed to either mobilise the colon or rectum or ligate the vessels). Length of stay (LOS), 30-day readmission, 30-day reoperation, 30-day mortality, and clinical anastomotic leak were among the postoperative clinical data reviewed (defined as an anastomotic leak requiring re-intervention such as a drain or further surgery). All patients requiring TME were subjected to defunctioning loop ileostomy [resulting in low rates of anantomotic leak](#), pathological CRM circumferential margins [were noted and with number of](#)

**lymph nodes dissected.** Apart from **most important** history, clinical examination and baseline blood parameters, a whole body computed tomography and a preoperative colonoscopy were performed on all patients. Patients who had rectum involvement additionally got MRI (magnetic resonance imaging) for additional staging. Neoadjuvant therapy was administered before surgery for all rectal cancers. **Exclusion criteria include the following:** preoperative bowel preparation, Prophylaxis for venous thromboembolism, perioperative control of antiplatelet and anticoagulant treatment, and antibiotic prophylaxis was given one hour prior to surgery.

## SURGICAL TECHNIQUE

All the surgeries were carried by a single surgeon to avoid bias **who has more than 20 years of experience in oncological procedures and were carried in a single centre using standardised single-docking robotic-Si system by changing the port configuration and flipping the arms** between the pelvic and abdominal stages. The first step of the procedure was medial to lateral dissection, which was followed by vascular control by ligating **the major blood arteries**, and then mobilising the splenic flexure. **TME was done starting from posterior mobilisation followed by right lateral, anterior and lastly posterior mobilisation.** The day before surgery, all patients undergoing total TME surgery (i.e., for mid- and low-rectal tumours), **received preoperative bowel preparation, and loop ileostomies were created where an anastomosis was made.** Following surgery, all patients were **mangement** with the Kehlet and Wilmore [7] improved recovery protocol. Patients were only sent home after safely fulfilling the requirements for discharge criteria.

## AIMS AND OBJECTIVES

This study's main goal was to examine the **overall short-term results** of all robotic rectal cancer cases. This was done to investigate whether robotic rectal surgery was safe and practical. The secondary goal was to compare the immediate results of resections done using the da Vinci si system.

Parameters evaluated were

- Demographic characteristics
- Operative time in minutes
- Pathological stage
- Conversion to open
- Length of hospital stay in days
- Anastomotic leak
- Time to recover of bowel function
- Distal margin from tumor

## INCLUSION CRITERIA

- Rectal adenocarcinoma distal extend <15 cm from anal canal

- Age < 75 and > 25 years
- ASA less than or equal to 3
- Procedure performed by the same surgeon

#### Exclusion criteria

- metastases or peritoneal carcinosis discovered during exploratory laparoscopy
- BMI > 30
- ASA 4
- extracorporeal anastomosis
- concurrent colon or rectum malignancies
- benign disease
- procedures carried out during emergency surgery.
- Unresectable tumor
- Malignant bowel obstruction
- Previous abd

#### Statistical method

Data was analysed using IBM SPSS version 24

#### Ethical clearance

Each patient who was included in the study gave their informed consent for the use of their data in research. Ethical clearance was needed its a n observational study and performed routinely in our hospital.

### Results

In this study of 50 patients who underwent Robotic rectal we observed the most frequent age group was above age of 46 years with male predisposition. The ASA (american society of anaesthesiology ) It was most common to be encountered. The most commonly performed Robotic surgery was Anterior Resection which was done in 43 among 50 patients. commonly encountered T STAGE T2 and T3 with 20 and 11 patients respectively, mean operative time in our study was 240 minutes with RO resection and TME performed more than in 95% of patients with median lymph node retrieval of 17. Analysing the date of operative time BMI we found it to be statistically significant with P-value of less than 0.005 reflecting that less operative for patients lower BMI.

Table 1 : Age distribution-

Age group	Number of patients
26-35	6
36-45	12
>46	32

Mean age of the patient- 56.3

Table 2 :Gender distributions

Gender distributions	Number of patients
Male	31
female	19

Table 3: ASA GRADING

ASA Grading	Number of patients
I	6
II	34
III	10
IV	0

Table 4 :Procedure performed

procedure	Number of patients
Anterior resection	43
Abdomino pelvic resection	7

Table 5 : Pathological T stage

T stage	Number of patients
0	3
1	9
2	20
3	11
4	7

Table 6 :N stage

N stage	Number of patients
0	28
1	13
2	9

Table 7 :Post operative outcome

Mean operative time ( in minutes)	240
-----------------------------------	-----

R0 clearance	49
Total mesorectal excision	46
Median lymph nodes retrieved	17
Permanent stoma	7
Diversion ileostomy	43
Mean hospital stay ( in days)	5
Conversion to open	1
Clinical anastomotic leak mortality	0
Reoperation	0

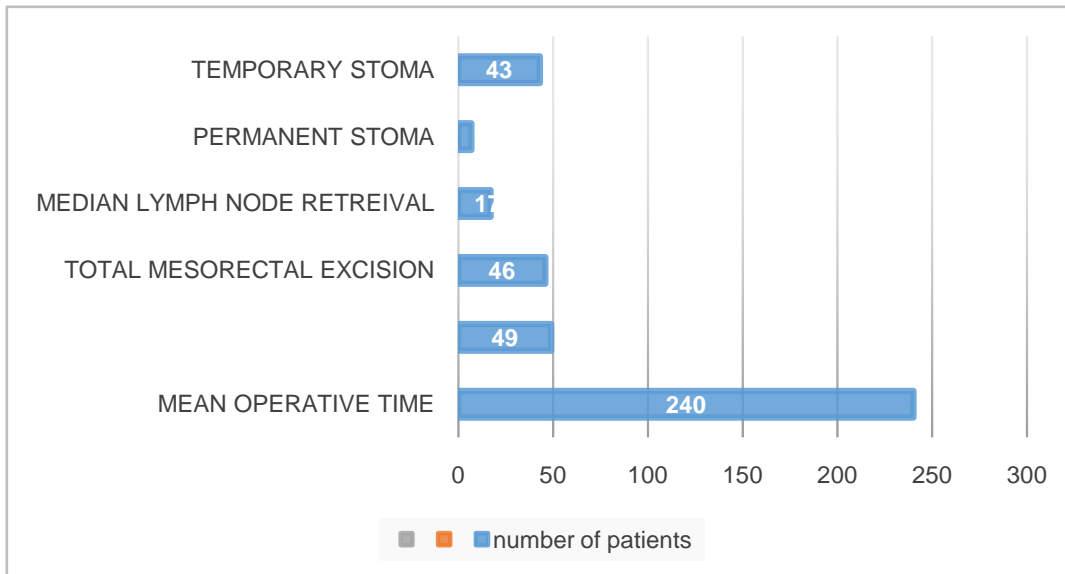


Fig 1:post operative outcome

Table 8 : Comparison of mean operative time with body mass index

Body mass index	Mean operative time
<25	224 min / 240 min
≥ 25	293 min / 240 min

P value of < 0.005

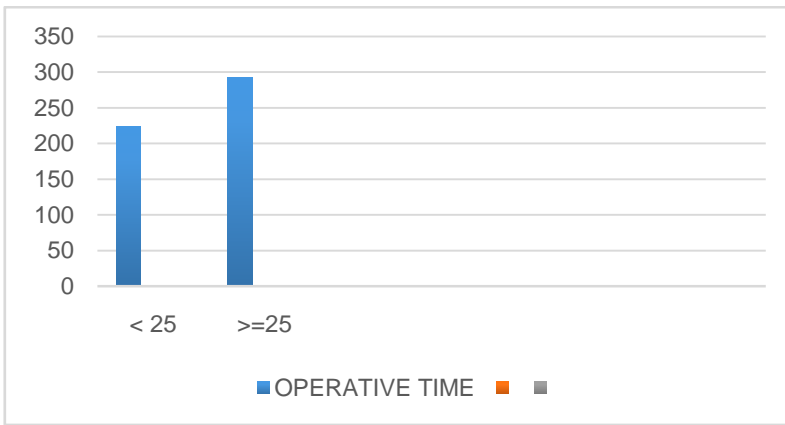


Fig 2 :RELATIONSHIP OF BMI WITH MEAN OPERATIVE TIME

Table 9 : Comparison of mean operative time with or without prior chemoradiation

Prior chemoradiation/total number of patients	Mean operative time (minutes)
Yes 9/50	270/240
no 41/50	212/240

P Value of < 0.005

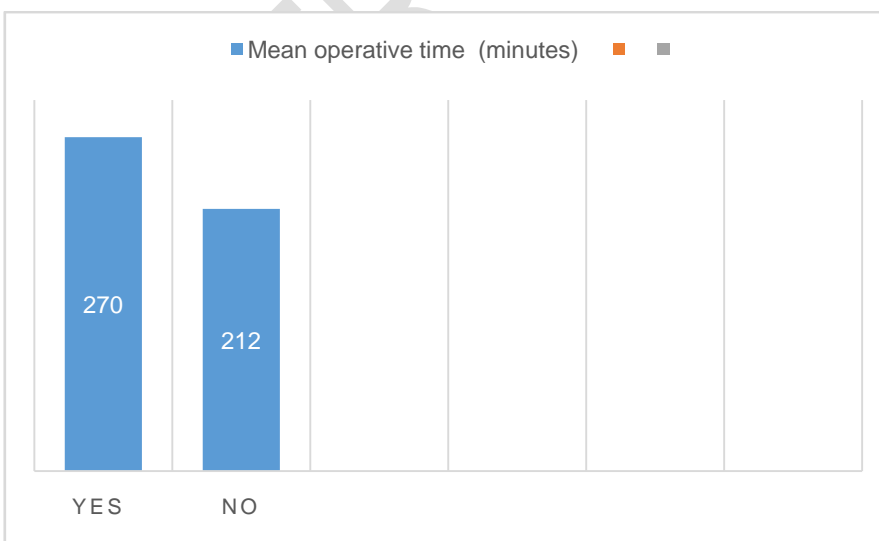


Fig 3 : Comparison of mean operative time with or without prior chemoradiation

## Discussion

Approaches to Rectal surgeries from past few decades underwent an enormous gestures of remodelling, revisions and rework by various surgeons with the a **dream, objective, intent and ambition to have better**, effortless and safe oncological outcomes. **With the advancement of engineering the shift from open to minimally invasive laparoscopic to the present day Robotic approaches is the zenith of human efforts in the surgical armamentarium regarding the same as the present days best means to endeavor as a surgical approach towards a rectal cancer surgery.** Any novel surgical procedure must be demonstrated to be safe and must produce results that are equivalent to current **practices** before it can be regarded as an alternative. **Since laparoscopy has been widely used for colorectal procedures, studies have shown that it can reduce hospital stays while producing an acceptable oncological resection with no obvious differences in postoperative complications or inpatient mortality when compared to a conventional open method.** Although there are no published research indicating that robotic rectal surgery is preferable than the laparoscopic procedure, other reviews have already shown it to be safe and practicable. This is mostly because there are no randomised control trials [8]. Robotic surgery was developed to alleviate the drawbacks of laparoscopy (such as limited ergonomics in small spaces, tremor effect, and unnatural hand-eye coordination), and it has since been effectively used in urology, general and paediatric surgery, gynaecology, and other surgical specialties. Some benefits of robotic surgery include a quicker learning curve, 3-D views, improved ergonomics, higher wrist flexibility, decreased hand tremor, and reduced effort for surgeons. **According to several research, laparoscopic surgery and robotic surgery both had the same perioperative and oncological outcomes [9].**

In this study we enrolled 50 patients at KIMS (Krishna institute of medical science) Telangana India from January 2018 to June 2022. Our institute performs more than 100 various Robotic procedures Annually. Our notion of this research work was to provide a glimpse on feasibility of Robotic approach of Rectal cancer surgery. In this study we found mean age of the patients were 63 with male predominance with ASA mostly encountered was II in 34 patients and II in 10 among 50 patients, **neoadjuvant treatment was given in 18% of patients.** Most frequent procedure performed was Robotic Anterior resection in 86% similar results were seen by **Sofoklis Panteleimonitis [10]** they found the majority of patients were male (66.7%) with ASA grade II in (70%), Anterior resection was done in 86% of patients and neoadjuvant treatment was instituted in 27.5% of patients these findings correlate with our study. Most common T stage encountered in our study was **T2 in 40% followed by T3 in 11, N0 stage was found in 56%** and N1 was found in 13%, mean operative time in our study was 240 minutes, R0 resection was encountered in 49 with total mesorectal excision was proved pathologically in 46 patients, median lymph node retrieval 17, permanent stoma was created in 7 patients in which abdominoperineal resection was done, diversion ileostomy was created in 43, median hospital stay was 5 days, conversion to open done in 3 patients, clinical anastomotic leak was seen in none because of diversion ileostomy, there was no mortality and reoperation rates in our study. Study conducted by **Yasser Debakey [11]** revealed following results with most number of surgeries were anterior **resection** with mean operation time of 201 minutes, conversion to open was 4.8%, total mesorectal excision was performed in 85%, median lymph node retrieval was 14, anastomotic leak was observed in 1 patient and no reoperation or mortality, which is similar to our results. In our study we observed as the BMI of the patient increases the mean operative time increases on statistical analysis results were significant with P value of less than 0.005 patients with BMI less than 25 were having mean operative time 224 minutes and those who were having BMI  $\geq 25$  were having mean operative time of 293 minutes similar **resultsd were**

given by **Abeer Eddib** [12]. We also observed mean operative was more in those who were subjected to prior adjuvant treatment 270 minutes than upfront surgery 212 minutes which was statistically significant with P-value less than 0.005, similar observations were made by **Tzu-Chun Chen** [13] they concluded that Longer operation times ( $324.964 \pm 83.435$  vs.  $246.232 \pm 111.324$  min,  $p < 0.001$ ) after neoadjuvant treatment and with greater blood loss.

## CONCLUSION

In this study we concluded that single docking Robotic Rectal Surgery is safe, effective alternative in terms of short perioperative outcomes like reduced hospital stay, better recovery especially in lower BMI and **upfront surgery patients**. This new dimension of surgical approach has unarguably made a better intraoperative handling of tissues with wide range of manoeuvres that undoubtedly leads to better oncological outcomes. With the upcoming advances of artificial intelligence in this dimension of surgical arsenal the future of Robotic surgeries will undeniably be the best surgical care endeavored to a patient.

## References

- 1 - Robotic Surgery for Colorectal Cancer Muhammad, Fahd Shah, Irfan ul Islam Nasir Amjad Parvaiz. *Visc Med* 2019;35:247–250 DOI: 10.1159/000500785.
- 2- Kwak JM, Kim SH. Robotic surgery for rectal cancer: an update in 2015. *Cancer Res Treat.* 2016 Apr; 48(2): 427–35.
- 3- G. B.Makin,D.J.Breen, and J.R. T.Monson, “The impact of new technology on surgery for colorectal cancer,” *World Journal of Gastroenterology*,vol.7,no.5,pp.612–621, 2001.
- 4- Bokhari MB, Patel CB, Ramos-Valadez DI, Ragupathi M, Haas EM. Learning curve for robotic-assisted laparoscopic colorectal surgery. *Surg Endosc.* 2011;25:855–60.
- 5- Samalavicius NE, et al. Robotic surgery using Senhance((R)) robotic platform: single center experience with first 100 cases. *J Robot Surg.* 2020;14(2):371–6.
- 6- Hiam-Galvez KJ, Allen BM, Spitzer MH. Systemic immunity in cancer. *Nat Rev Cancer.*2021;21(6):345–59.
- 7-Kehlet H, Wilmore DW. Multimodal strategies to improve surgical outcome. *Am J Surg.* 2002;183(6):630e641.

8- D. L. Vendramini, M. M. D. Albuquerque, E. M. Schmidt, E. E. Rossi-Junior, W. D. A. Gerent, and V. J. L. D. Cunha, "Laparoscopic and open colorectal resections for colorectal cancer.," *Arquivos brasileiros de cirurgia digestiva : ABCD = Brazilian archives of digestive surgery*, vol. 25, no. 2, pp. 81–87, 2012.

9- Esen E, Aytac E, Ozben V et al (2019) Adoption of robotic technology in Turkey: a nationwide analysis on caseload and platform used. *Int J Med Robot* 15(1):e1962.

10- Sofoklis Panteleimonitis, Oliver Pickering, Mukhtar Ahmad, Mick Harper, Tahseen Qureshi, Nuno Figueiredo, Amjad Parvaiz. Robotic rectal cancer surgery: Results from a European multicentre case series of 240 resections and comparative analysis between cases performed with the da Vinci Si and Xi systems. *Laparoscopic, Endoscopic and Robotic Surgery* 3 (2020) 6-1

11- Yasser Debakey, Ashraf Zaghloul, Ahmed Farag, Ahmed Mahmoud and Inas Elattar. Robotic-Assisted versus Conventional Laparoscopic Approach for Rectal Cancer Surgery, First Egyptian Academic Center Experience, RCT. *Minimally Invasive Surgery Volume* 2018.

12- Abeer Eddib, Alexandra Danakas and Pankaj Singhal. Influence of Morbid Obesity on Surgical Outcomes in Robotic-Assisted Gynecologic Surgery. *J Gynecol Surg*. 2014 Apr 1; 30(2): 81–86.

13- T.C. Chen, J.T. Liang. Robotic versus laparoscopic surgery for rectal cancer after neoadjuvant chemoradiotherapy: a propensity-score matching analysis. *J Formos Med Assoc*, 121 (2022), pp. 1532-1540