

ORIGINAL RESEARCH PAPER

Length - Weight Relationship and Condition Factor of *Chrysichthys longidorsalis* (Risch & Thys Van Den Audenaerde, 1981) landed at the Sanaga River Basin, Cameroon

Abstract

Given the lack of adequate information on morphometric characteristics of wild fish in Cameroon, the present research was carried out from November 2019 to October 2020 to analyse length - weight relationship and Fulton's condition factor of *Chrysichthys longidorsalis* (Risch & Thys van den Audenaerde, 1981) to provide baseline information for its fishery management and aquaculture development. A total of 451 sampled *C. longidorsalis* captured from Sanaga River basin of the Centre Region in Cameroon were identified and lengths and weights measured. Mean standard length, total length and total weight of samples were 18.13 ± 7.32 cm, 23.91 ± 9.37 cm and 305.15 ± 315.66 g respectively. The males were longer and heavier than females ($p < 0.05$). High correlation coefficient (> 0.9) and coefficient of determination ($R^2 = 0.9516$) revealed strong positive relationship ($> 95\%$) between fish standard length and total weight. The growth coefficient (b) values, were less than 3 (2.7234) suggesting a negative allometric growth pattern. Though the condition factor was higher ($p < 0.05$) in males and during the dry season than in females and during the rainy season, the overall value was 5.85 ± 11.44 , indicating that the fish had good adaptation to conditions of the Sanaga River basin. This study serves as useful reference for sustainable management and conservation of fish resources in Cameroonian waters.

Keywords: *Chrysichthys longidorsalis*, Length – weight relationship, Fulton's condition factor, growth pattern, population structure, Sanaga River basin Cameroon.

Introduction

Fish is the preferred protein source of most underprivileged communities in Cameroon due its affordability and availability in small units for easy purchased (Kaktcham *et al.*, 2015). However, Cameroon's natural fisheries stocks are rapidly deteriorating due to illegal and overfishing (FAO, 2017) and wild capture fisheries does not satisfy the national needs which increase annually in proportion to population growth (Pouomogne and Pemsil, 2008, Pouomogne *et al.*, 2010). The huge demand - supply gap obliges the country to import frozen fish (over 100,000 tonnes of fish per year), leading to a deficit in fish products trade balance and escalating fish prices (Pouomogne and Pemsil, 2008, Pouomogne *et al.*, 2010, FAO, 2017). Closing this gap requires sustainable fisheries through application of appropriate and effective fishery management

strategies, and sufficient annual recruitment through aquaculture to reduce pressure on capture fisheries (Sikoki *et al.*, 1999).

The World fish supply of 20 kg per capita is due to intensification and growth in aquaculture correlated with enhancement of native species in certain regions (FAO, 2016; Tiogue' *et al.* 2020). Cameroon's biodiversity comprises many indigenous fish species such as *Chrysichthys longidorsalis* (*C. longidorsalis*) (plate 1), *Labeobarbus batesii* and *Parachanna obscura* amongst others, which could have great aquaculture potential and high commercial value in Cameroon (Pouomogne and Pems, 2008, Pouomogne *et al.*, 2010). Indigenous African carps and catfish including *Labeo parvus* (Montchowui *et al.*, 2011a, b and c) in Benin, *Labeo coubie* in Nigeria (Ikpi and Okey, 2010, *Labeobarbus batesii* and *Clarias jaensis* in Cameroon (Tiogue' *et al.*, 2010; Zango *et al.*, 2015, 2017) have been shown to be profitable and adapting better to constraints of local aquaculture. This suggests that indigenous fish species in Cameroon can perform better in aquacultures in the country. Despite high biophysical potential for fish culture in Cameroon, with inland waters covering over 40,000 Km² and a growing increasing population, fish farming is poorly established and highly dependent on exotic species (*Clarias gariepinus*, *Oreochromis niloticus* and *Cyprinus carpio*) which are less adapted compared to indigenous species to the environment and whose fingerlings are rare and expensive (Pouomogne and Pems, 2008). In this regard, understanding the fishery of and developing breeding techniques of *C. longidorsalis*, a highly valued food fish endemic to the middle course of the Sanaga River basin (Risch & Thys van den Audenaerde, 1981; Risch *et al.*, 2007), to ensure adequate and regular supply of fish seeds for aquaculture development, will improve fish yields by targeted communities in the country.

Length - weight relationship (LWR) and condition (K) factor are important tools for adequate management of fish species (Ndome *et al.*, 2012). LWR is used to compute the K – factor which is important in determining the performance, survivorship and reproductive success in a fish population (Forseth *et al.*, 1999). Also, the K – factor indicates the amount of energy available to an individual allocated to various life functions such as reproduction, foraging and survival (Al-Azizz *et al.*, 2017) and provides information when comparing two populations of fish living in certain feeding, density and climatic conditions (Idodo-Umeh, 2002, 2005). Though fish size and LWR is used to predict potential yield and size at capture for optimum yield, management parameters are directly related to length of fish for differentiating populations. However, there is dearth of information on the characteristic length - weight relationship and condition factor of wild fish in Cameroon and the influence of these relationships to sustainable development and

intensification of fishery and aquaculture in Cameroon. Given the lack of information on morphometric characteristics of wild fish in Cameroon, the present research was carried out to analyse length-weight relationship and condition factor of *C. longidorsalis* in the Sanaga River basin to provide baseline information for its fishery management and aquaculture development.

Materials and Methods

Description of study area

This study was carried out at the River Sanaga basin in the Centre Region of Cameroon. The river flows for 918 km from the Adamawa Plateau to the mouth of the Atlantic Ocean. Fish samples were collected upstream of Ebebda, at the Mbam and Sanaga confluence zone (Latitudes 3°38' and 7°22' North and Longitude 9°38' and 14°54' East) (Figure 1). The area has two distinct rainy seasons (mid-March – mid-June and mid-September – mid-November) with an annual rainfall range of 1500 – 2000 mm, and two distinct dry seasons (mid-June to mid-September, mid-November to mid-March). The surrounding area is moderately populated (20 – 69 / km²) with major activities being subsistence farming, fishing and sand extraction. The fishing gears frequently used include gillnets, seine nets, non-return valve and bamboo traps.



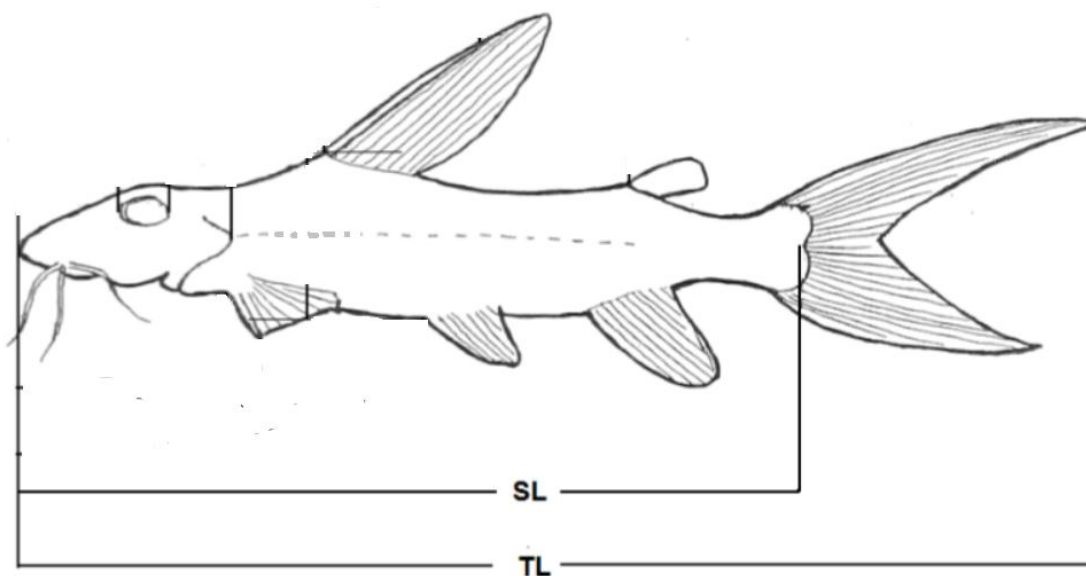
Figure 1: Map of Sanaga River basin showing point of collection of study samples

Selection and sampling of fish for the study

A cross-sectional study using stratified sampling procedure was carried out during the period of December 2018 to December 2019 to select fishermen and individual fish per fisherman's catch at the middle course (upstream of Ebebdá) of the Sanaga River, at the Mbam and Sanaga confluence zone of Centre Region, Cameroon. For lack of previously reported data, a default rate of 50% was used to estimate the number of fish required for the study with a desired 95% confidence and precision of $\geq 5\%$ (Thrusfield, 2007). The selection of fishermen during each visit was done by simple random-number generation method of the fishermen doing commerce at the study sites. The selection procedure took into consideration health status of the captured fish and fishermen's willingness to participate in the study. Eligible fishermen were numbered and chosen randomly without replacing the number. Selection of individual fish from the chosen fishermen was based on a calculated sampling fraction of five (every fifth fish was sampled) for use at each fisherman's catch. Briefly, the first fish was selected by picking a fish by random generation method from the first five fish being transferred to the temporal storage chain for commercial activities. Thereafter, every fifth fish (adding 5 to previous picked number) was chosen as sample. Thus, a total of 451 samples of *C. longidorsalis*, identified as previously by Risch and Thys van den Audenaerde (1981), and considered healthy on the basis of appearance and absence of obvious diseases, were randomly collected without bias of size, type and sex on monthly bases for 12 months (November 2019 to October 2020) from fishermen's commercial catch. Specialised and unspecialized fishing gears including gillnet, seine net, non-return valve and bamboo traps were used by the fishermen to capture the live fish samples. To preserve the maximum freshness, the collected samples were transported in an ice chest to the Research Center for Food, Food Security and Nutrition of the Institute for Medical Research and Medicinal Plants Studies (IMPM), Ministry of Scientific Research and Innovation (MINRESSI), Yaoundé, Cameroon, for dissection and further analyses. Manipulation and examination of all fish specimens was done within 12 hours after capture.

Morphometric Parameters: The length-weight relationship and Condition Factor (K)

The standard (SL / cm) and total length (TL / cm)) of the fish was measured using a calibrated measuring board while the weight of each fish was measured using an electronic balance (0.1g error margin) after blotting it dry with a clean towel (Johnson and Tamatamah, 2013).



SL: Standard Length; TL: Total Length

Figure 2: Diagram of *C. longidorsalis* showing morphometric measurements

(Source: Modified according to Oladosu and Oladosu, 2007 and Béatrice *et al.*, 1997)



Plate 1: Small size *C. longidorsalis* from the Sanaga River basin, Centre Region, Cameroon

The Length Weight Relationship (LWR) was determined using the equation $W = aL^b$ (Le Cren, 1951, Froes, 2006).

Where: W = Fish total weight (g), L = SL (cm), a = constant (intercept) and b = length exponent (slope of the log - transformed relation), referred to as the growth constant.

The logarithm -transformed data gives the linear regression equation, $\text{Log } W = \text{Log } a + b \text{ Log } L$ (Le Cren, 1951), used to estimate regression parameters 'a' and 'b' of the length - weight relationships. The growth pattern of the fish population, whether Isometric ($b = 3$), negative allometric ($b < 3$) or positive allometric ($b > 3$), was determined as previously described (Quarcoopome, 2017; Froese *et al.*, 2011). The degree of association between length and weight was expressed by a correlation coefficient "r" (ranging between -1 and +1) with a negative correlation corresponding to a negative value of 'b' and positive correlation corresponding to a positive value of b in regression analysis (Pauly, 1983).

Fulton's condition factor (K) was estimated using the formula: $K = 100W/L^b$, Where W = weight of fish (g), L = standard length of the fish (cm), b = coefficient of allometry and considered equal to 3 (Akombo *et al.*, 2013; Dekić *et al.*, 2016). Fulton's K Factor assumes that weight of fish is proportional to the cube of the length and is used to assess the general wellbeing of fishes, on individual and population level. The Fulton's K factor was multiplied by 100 to get it close to 1 indicating a normal condition of the fish, and a value greater than 1 indicated fat fish and less than 1 indicated skinny fish. This morphometric index assumes that the heavier a fish for a given length the better its condition (Omitoyin *et al.*, 2013).

Sex Determination

The sex of each fish was determined by visual inspection of the urogenital papilla and dissection to inspect gonads (Oladosu and Oladosu, 2007, Akombo *et al.*, 2013; Mbakane *et al.*, 2010) (plate 2). The urogenital papilla is protruded for males and rounded for females. Upon dissection, eggs were seen swollen in the paired ovaries of some adult females, while the testes were typically flattened, elongated, whitish and non-granular in appearance. Gonad shape was also a guide to sex for immature specimens. Where gonads were not identified, fish sex was recorded as undetermined (Quarcoopome, 2017).

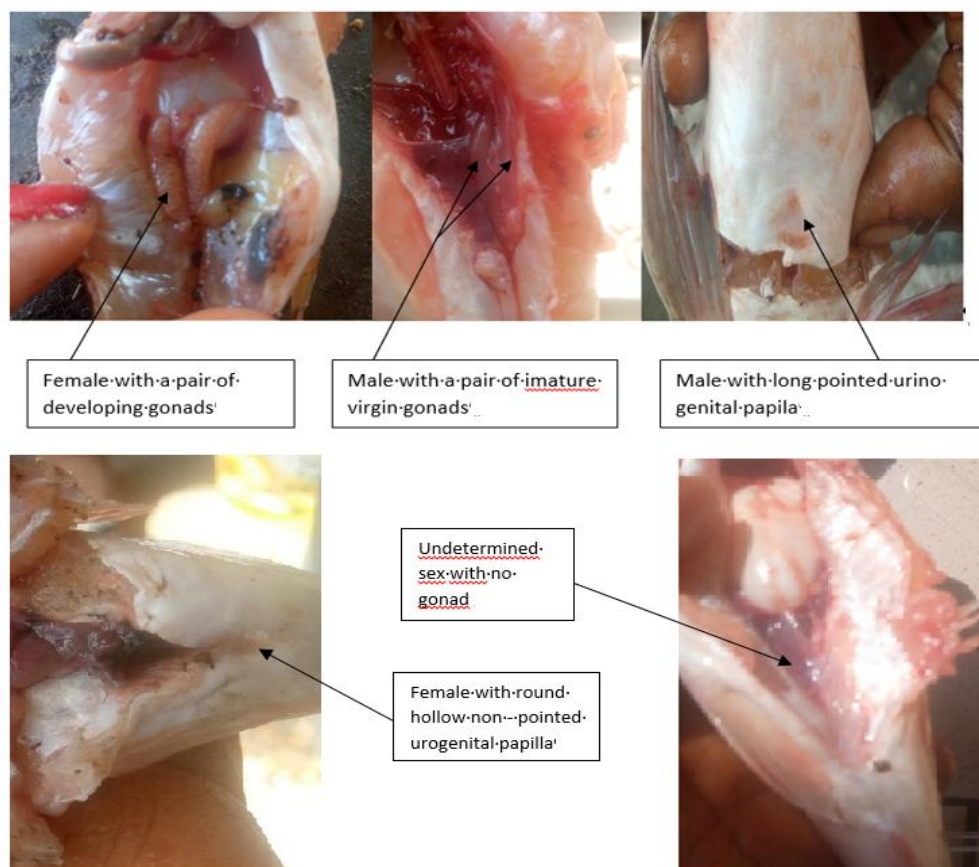


Plate 2: Sex determination of *C. longidorsalis* from the Sanaga River basin through visual inspection of genital papilla and dissection.

Statistical Analysis

Microsoft office Excel 2013 was used for entering obtained data for descriptive statistics. The data was transferred to the Statistical Package for the Social Sciences (version 22, SPSS Inc., USA) for further statistical analysis (Thrusfield, 2007). Linear regression was used to estimate a, b, coefficient of correlation (r) and to ascertain the significance of the relationship derived from the length - weight analysis. The relationships between factors such as host sex, weight and length were obtained using analysis of variance (ANOVA) and **t – test used to compare the b values to the isometric value of 3** and significant level was set at $p < 0.05$ (Anderson and Neumann, 1996, Thrusfield, 2007). **The Sturge's rule was used to define classes**

Results

Size Distribution and Population Structure

Overall, 451 *C. longidorsalis* samples (136 males, 200 females and 115 undetermined) were used in the study (Table 1). The standard length (SL), total length (TL) and total weight (W) of the fish ranged from 6.20 cm to 41.20 cm (mean: 18.13 ± 7.32 cm), 8.00 cm to 53.10 cm (mean: $23.91 \pm$

9.37 cm) and 25.00 g to 1605.00 g (mean: 305.15 ± 315.66 g) respectively. The male *C. longidorsalis* were significantly ($p < 0.05$) longer and heavier than the female fish.

Table 1: Length and Weight Distribution of *C. longidorsalis* sampled from the Sanaga River basin Cameroon according to season and sex

Season	Sex	Number sampled (%)	Morphometric	Characteristic	Weight (g) Mean \pm SD (Min – max)
			Standard length (cm) Mean \pm SD (Min – max)	Total length (cm) Mean \pm SD (Min – max)	
Rainy season	Female	109	$18.86 \pm 7.72a$ (6.2 – 39.3)	$24.90 \pm 9.94a$ (8.0 – 47.4)	$168.11 \pm 233.20a$ (15 – 980)
	Male	65	$17.07 \pm 5.92a$ (10.1 – 41.2)	$22.59 \pm 7.52a$ (13 – 51.4)	$246.51 \pm 259.51b$ (25 – 1605)
	Sex not determined	85	24.01 ± 8.72 (10.1 – 40.9)	31.37 ± 10.87 (17.9 – 50.8)	81.94 ± 143.57 (20 – 1060)
	Total	259	$20.10 \pm 8.15A$ (6.20 – 41.2)	$26.44 \pm 10.33A$ (8.00 – 51.4)	$159.51 \pm 223.83A$ (15 – 1605)
Dry season	Female	91	$16.23 \pm 5.73a$ (10 – 40.3)	$21.65 \pm 7.44a$ (12 – 19.4)	$136.87 \pm 197.38a$ (25.0 – 1310)
	Male	71	$14.62 \pm 4.47a$ (9.6 – 36.5)	$19.17 \pm 5.89a$ (11.0 – 46.4)-	$358.83 \pm 352.81b$ (40 – 1240)
	Sex not determined	30	15.15 ± 2.13 (10 – 20.3)	20.17 ± 3.96 (11.8 – 26.8)	73.07 ± 85.77 (20 – 500)
	Total	192	$15.47 \pm 4.90B$ (6.2 – 41.2)	$20.50 \pm 6.52B$ (11.0 – 46.4)	$208.98 \pm 280.75B$ (20 – 1310)
Overall	Female	200 (44.34)	$17.66 \pm 6.99a$ (6.20 – 40.30)	$23.42 \pm 9.02a$ (8.00 – 49.40)	$153.90 \pm 217.66a$ (15.00 – 1310.00)
	Male	136 (30.15)	$15.79 \pm 5.34b$ (10.00 – 41.20)	$20.81 \pm 6.91b$ (8.40 – 53.10)	$305.15 \pm 315.66b$ (25.00 – 1605.00)
	Sex not determined	115 (25.50)	21.69 ± 8.51 (9.60 – 36.50)	28.45 ± 10.75 (11.00 – 46.40)	79.63 ± 130.67 (20.00 – 1060.00)
	Total	451 (100)	18.13 ± 7.32 (6.20 – 41.20)	23.91 ± 9.37 (8.00 – 53.10)	180.57 ± 250.56 (15.00 – 1605.00)

a, b: same letters on a category (season) in a column are not significantly different ($p > 0.05$)

A, B: same letters in a column are not significantly different ($p > 0.05$)

Length - Length Relationship by sex of *C. longidorsalis* from the Sanaga River basin

The correlation coefficient and coefficient of determination revealed a strong relationship (>90%) between standard and total lengths of *C. longidorsalis* (Figure 3).

The observed SL – TL relationships of the samples are shown by the following linear regression equations:

For males: $SL = 0.7894 TL - 0.9351$ ($n = 136$, $R^2 = 0.9717$);

For females: $SL = 0.7379 TL + 0.2911$ ($n = 200$, $R^2 = 0.9589$);

For undetermined sex: $SL = 0.6991 TL + 1.1618$ ($n = 115$, $R^2 = 0.9404$);

For both sexes: $SL = 0.7596 TL - 0.0888$ ($n = 451$, $R^2 = 0.9708$).

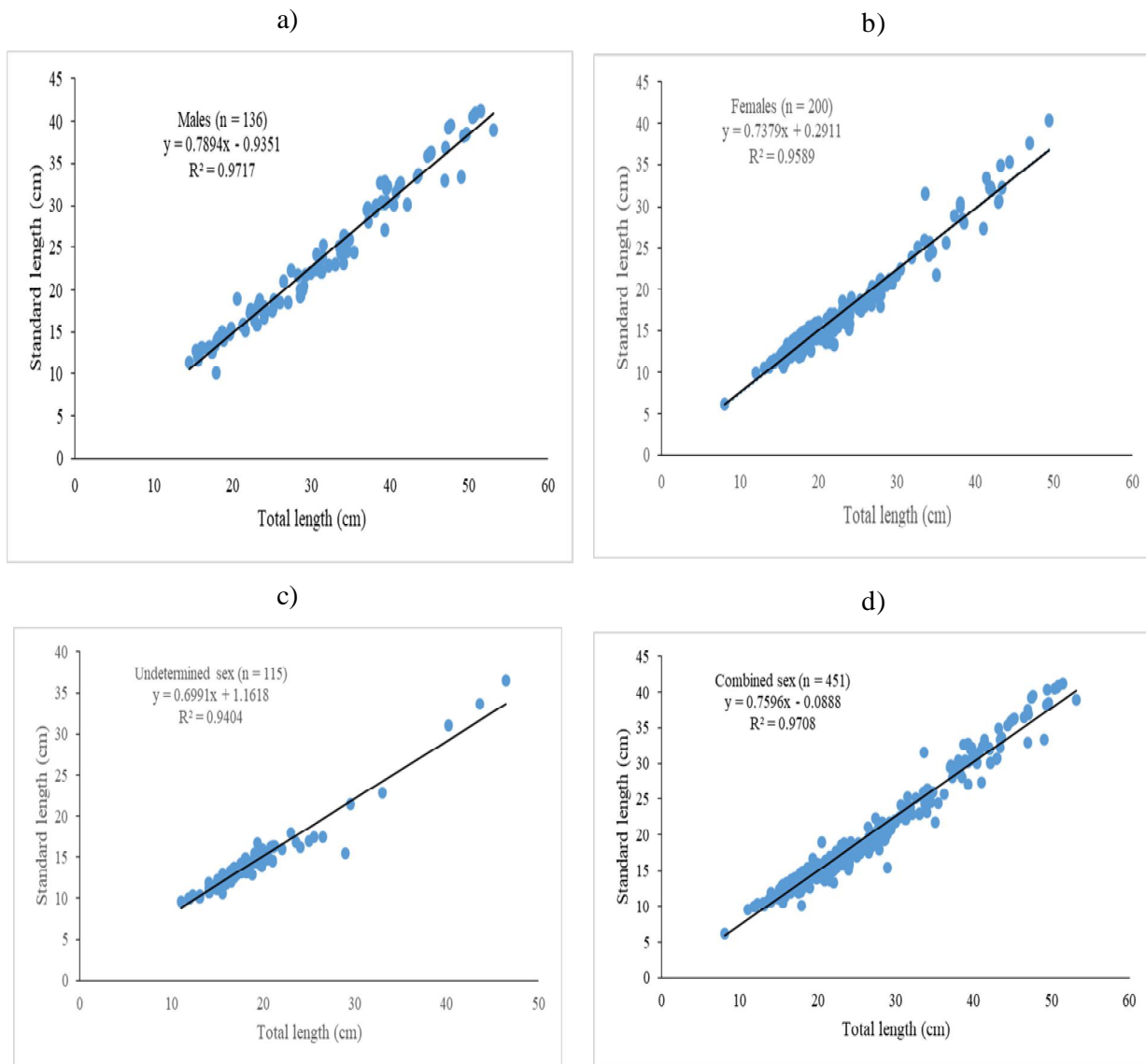


Figure 3: Standard length - total length relationship by sex (a) Male, (b) Female, (c) undetermined sex and (d) Combined sexes, of *C. longidorsalis* sampled from the Sanaga River basin of Cameroon.

Length - Weight Relationship by sex of *C. longidorsalis* from Sanaga River Basin Cameroon

The correlation coefficient and coefficient of determination also revealed a strong relationship (>85%) between standard length and weight of *C. longidorsalis* from the Sanaga River (Figure 4). The observed standard length - weight relationships are shown by the following linear regression equations with the estimated values for “a”, “b” and “R²”:

For males: $\text{Log } W = 2.7778 \log \text{SL} - 1.4565$ ($n = 136$, $R^2 = 0.9631$);

For females: $\text{Log } W = 2.7638 \log \text{SL} - 1.425$ ($n = 200$, $R^2 = 0.9172$);

For undetermined sexes: $\text{Log } W = 2.4041 \log \text{SL} - 1.0153$ ($n = 115$, $R^2 = 0.881$);

For combined sexes: $\text{Log } W = 2.7234 \log \text{SL} - 1.3788$ ($n = 451$, $R^2 = 0.9516$)

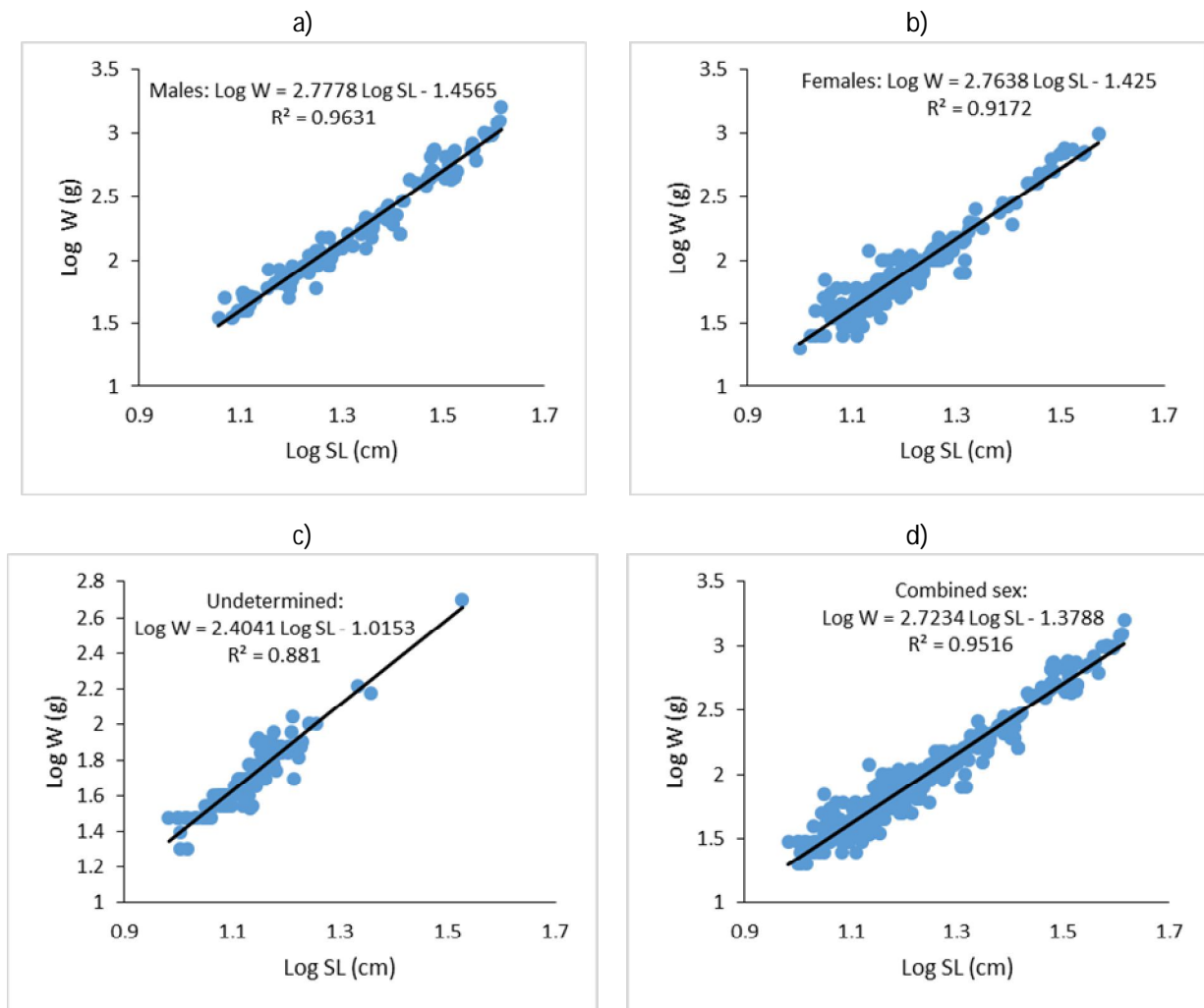


Figure 4: Length – weight relationship for (a) Male, (b) Female, (c) Undetermined sex and (d) Combined sexes of *C. longidorsalis* sampled from the Sanaga River basin of Cameroon

The fish exhibited negative allometric growth pattern with b - values for males (2.7778), females (2.7638), undetermined (2.4041) and combined sexes (2.7234) significantly less than 3 ($b < 3$). There was a strong correlation between the length and weight as shown by the high correlation coefficients (>0.9) that approximated to 1.

Length - Weight Relationship according to seasons of the year of *C. longidorsalis* from the Sanaga River Basin Cameroon

The length - weight relationship with respect to seasons is represented by the linear curves in figure 5. For the long dry season: R^2 is 0.763, $r = 0.8735$, $a = - 1.1392$ and $b = 2.5339$; short rainy season: $R^2 = 0.8112$, $r = 0.9006$, $a = - 1.2821$ and $b = 2.6543$; short dry season, R^2 is 0.9213, $r = 0.9598$, $a = - 1.2545$ and $b = 2.6538$ and long rainy season, $R^2 = 0.694$, $r = 0.833$, $a = - 0.8514$ and $b = 2.3418$. The Length - weight regression for *C. longidorsalis* from the Sanaga

River basin according to sex and season revealed a strong ($P < 0.001$) positive correlation with the coefficients (R^2) ranging from 0.69 to 0.92 and slope (b) from 2.34 to 2.65.

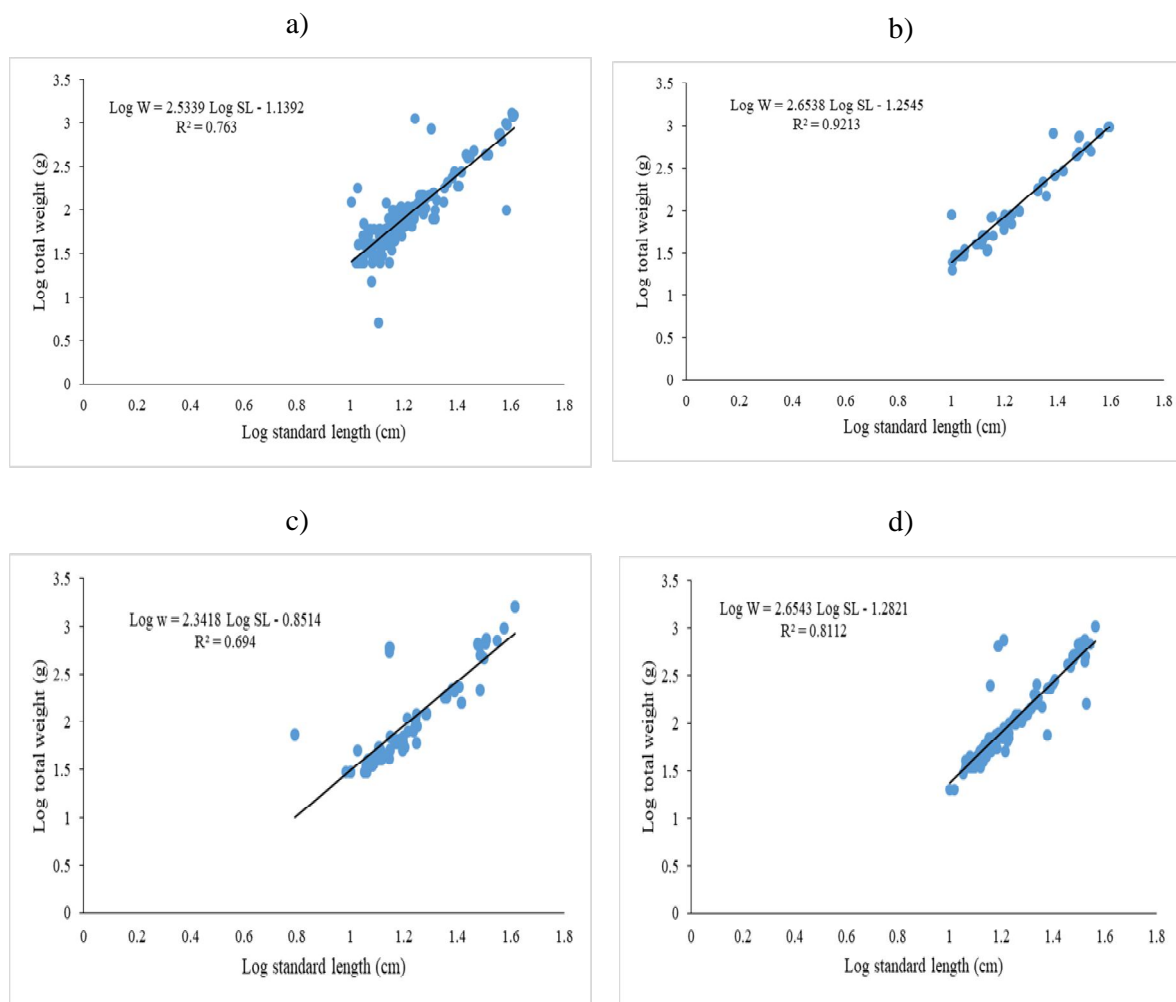


Figure 5: Length – weight relationship of *C. longidorsalis* from the Sanaga River basin for the (a) long dry season, (b) short dry season, (c) long rainy season and (d) short rainy season.

Condition factor

The condition factor (k) for *C. longidorsalis* from Sanaga River basin according to sex, size, month and season of the year are presented in Table 2. Overall, the mean K factor was significantly higher ($p < 0.05$) in males and during the dry season than in females and during the rainy season. Also, the K factor was highest in July (17.09 ± 17.09) and December (15.47 ± 19.72) and lowest in March (1.57 ± 2.21) and April (1.75 ± 3.17). Table 3 shows the variation of condition factor with standard length and weight. The results showed that the k values generally decreased with fish standard length and increased with weight of the fish

Table 2: Mean Condition factor of *C. longidorsalis* by sex from river Sanaga basin Cameroon according month of the year and season

Parameter	Variable	Sex						Total	
		Female		Male		Undetermined		N	K ± SD
		N	K ± SD	N	K ± SD	N	K ± SD		
Month of the year	January	42	6.72 ± 14.62	8	4.36 ± 3.47	/	/	50	6.34 ± 13.47
	February	40	5.22 ± 14.92	10	6.73 ± 10.34	/	/	50	5.53 ± 14.12
	March	42	1.58 ± 2.28	3	3.31 ± 2.30	5	0.38 ± 0.17	50	1.57 ± 2.21
	April	10	4.60 ± 5.79	/	/	41	1.05 ± 1.57	51	1.75 ± 3.17
	May	21	4.29 ± 7.52	2	13.40 ± 16.60	17	0.41 ± 0.49	40	3.10 ± 6.75
	June	10	2.84 ± 2.51	22	8.31 ± 9.09	1	25.27	33	7.17 ± 8.55
	July	/	/	19	24.10 ± 17.02	10	16.54 ± 16.33	29	17.09 ± 17.09
	August	8	2.65 ± 1.68	21	4.71 ± 3.87	5	1.17 ± 0.45	34	3.70 ± 3.40
	September	9	11.30 ± 10.92	17	3.35 ± 2.45	/	/	26	6.10 ± 7.54
	October	10	7.05 ± 11.25	7	13.66 ± 24.37	10	1.76 ± 0.96	27	6.81 ± 14.27
	November	7	5.05 ± 4.79	14	4.33 ± 2.88	11	0.81 ± 0.89	32	3.28 ± 3.40
	December	1	2.01	13	32.34 ± 18.65	15	1.75 ± 0.76	29	15.47 ± 19.72
Duration and type of season	Short rainy season	83	2.78 ± 4.74aA	27	8.13 ± 9.09bA	64	1.21 ± 3.33A	174	3.03 ± 5.69A
	Long rainy season	26	7.98 ± 9.80aB	38	5.61 ± 10.82aA	21	1.26 ± 1.02B	85	5.26 ± 9.31B
	Short dry season	8	2.65 ± 1.68aC	40	13.92 ± 15.41bB	15	2.89 ± 4.41C	63	9.86 ± 13.54C
	Long dry season	83	5.94 ± 14.61aD	31	16.86 ± 18.90bB	15	1.75 ± 0.76D	129	8.08 ± 15.71C
Entire duration and type of the season	Whole rainy season	109	4.02 ± 6.65aE	65	6.66 ± 10.14bC	85	1.22 ± 2.92E	259	3.77 ± 7.15D
	Whole dry season	91	5.65 ± 13.98aF	71	15.20 ± 16.96bD	30	2.32 ± 3.17F	192	8.66 ± 15.02E
Total		200	4.77 ± 10.64a	136	11.12 ± 14.70b	115	1.51 ± 3.01	451	5.85 ± 11.44

a, b : Different letter in a category (parameter) in a row are significantly different (p<0.05)

A, B, C, D, E, F: Different letters in a category (parameter) in a column are significantly different (p<0.05).

K= condition factor, SD = Standard deviation, N= Number of fishes

Table 3: Mean Condition factor of *C. longidorsalis* by sex from River Sanaga according to standard length and total weight

Parameter	Variable	Sex						Total	
		Female		Male		Undetermined		N	K ± SD
		N	K ± SD	N	K ± SD	N	K ± SD		
Standard length (SL) class (cm)	SL ≤ 10	4	10.67 ± 8.01A	1	5.65	2	3.00 ± 0.00	7	7.76 ± 6.79A
	10 < SL ≤ 20	146	5.89 ± 12.09aA	119	12.41 ± 15.27bA	63	2.40 ± 3.82A	328	7.58 ± 12.91A
	20 < SL ≤ 30	29	1.40 ± 1.72aB	11	2.47 ± 2.17aB	24	0.40 ± 0.18B	64	1.21 ± 1.62B
	SL > 30	21	0.49 ± 0.63aC	5	0.53 ± 0.38aB	26	0.26 ± 0.40B	52	0.38 ± 0.51C
Total weight (W) class (g)	W ≤ 200	169	2.54 ± 2.71aA	76	3.23 ± 2.29aA	110	1.09 ± 1.12	355	2.24 ± 2.38A
	200 < W ≤ 400	6	3.21 ± 2.92aA	17	7.23 ± 3.38bB	1	7.41	24	6.24 ± 3.60B
	400 < W ≤ 600	9	15.57 ± 13.12aB	20	19.03 ± 12.68aC	2	21.85 ± 4.99	31	14.13 ± 12.33C
	600 < W ≤ 800	12	9.94 ± 9.86aB	11	18.66 ± 12.10aC	1	1.62	24	13.59 ± 11.65C
	800 < W ≤ 1000	2	34.35 ± 30.46aC	8	42.65 ± 12.98aD	/	/	10	40.99 ± 15.69D
	W > 1000	2	87.93 ± 7.51aC	4	54.18 ± 15.03bD	1	1.60	7	56.31 ± 30.95D
Total		200	4.77 ± 10.64a	136	11.12 ± 14.70b	115	1.51 ± 3.01	451	5.85 ± 11.44

a, b : Different letter in a category (parameter) in a row are significantly different (p<0.05)

A, B, C, D: Different letters in a category (Parameter) in a column are significantly different (p<0.05)

K= condition factor, SD = Standard deviation, N= Number of fishes

Discussion

The standard length (SL), total length (TL) and total weight (W) of *C. longidorsalis* from the Sanaga River basin ranged from 6.20 cm to 41.20 cm (mean: 18.13 ± 7.32 cm), 8.00 cm to 53.10 cm (Mean: 23.91 ± 9.37 cm) and 25.00 g to 1605.00 g (mean: 305.15 ± 315.66 g), respectively and the males were significantly longer and heavier than females. The maximum SL encountered in this study (41.20 cm) was more than 31.2cm previously reported by Risch and Thys van den Audenaerde (1981). However, the different sizes in fishes are influenced by location (King, 1994), harvesting season and techniques, genetic and environmental variations, and temperature (Sikoki *et al.*, 1999; Tu *et al.*, 2018; Arranz *et al.*, 2021).

The length-weight relationship (LWR) is an important tool that provides information on growth patterns and growth of fish species (Ighwela *et al.*, 2011) with the b value in length-weight regression equation indicating growth pattern. The growth patterns show isometric growth ($b=3$) when there is no change in body shape with increase in length, negative allometric growth ($b<3$) when the body becomes slender with increase in length and positive allometric growth ($b>3$) when the body shape increases with length (Alam *et al.*, 2014). Negative allometry suggests poor environmental factors such as poor water quality and unavailability of food while positive allometric growth indicates good environmental factors such as high level of dissolved oxygen, optimum temperature, and abundant food. The growth pattern or b value is affected by many factors including gonad maturity, sex, diet, stomach fullness, health, and preservation techniques and may vary with season, time (example: day, week, and month) and habitat (Mon *et al.*, 2020).

Overall, the values of the growth coefficient (b) obtained in the present study were significantly less than 3 for male, female and combined sexes, deviating from the standard isometric 3 ($p<0.05$), indicating a negative allometric growth patterns (Alam *et al.*, 2014). The fish became tinnier or slender (seeming longer) as they increased in length, suggesting unfavourable growth conditions (Laurat *et al.*, 2019) of *C. longidorsalis* in the Sanaga River basin. This could be attributable to a myriad of ecosystem changes that impaired a three-dimensional growth of the fish (Isa *et al.*, 2010). The ecosystem changes of the Sanaga River basin included water level changes caused by the 2018 Nachtigal dam construction project upstream, which prompted imbalance in the water physicochemistry. Negative allometric growth pattern of other *Chrysichthys* species have been reported in some African waters including: *Chrysichthys longidorsalis* in New Calabar River ($b = 1.93$) by Elewuo (2012) and

in kpong reservoir Ghana ($b = 2.79$ for females and 2.91 for males) by (Quarcoopome, 2017), *Chrysichthys auratus* ($b = 2.92$ females) in River Nile in Egypt by Ragheb (2014) and *C. walkeri* ($b = 2.88$, females) from the Epe lagoon in Nigeria by Fafioye (2005). The length-weight relationship can vary significantly even within the same species given that the length-weight relationship can be affected by many factors such as sex, seasonal variability, growth phases, stomach contents, food availability, gonadal development, sample size, habitat suitability, temperature and salinity of the environment, fishing activities, individual metabolism, age, maturity and health status of the fish (Laurat *et al.*, 2019; Ahmed *et al.*, 2018; Hossain, 2010; Bayhan *et al.*, 2008; Henderson, 2005).

The correlation coefficient and coefficient of determination showed strong relationships between standard and total lengths of *C. longidorsalis* in the Sanaga River basin and indicated fitting regression equations for the standard length (Ezenwaji and Ezenwaji, 2009; Ragheb, 2014). Also, the high coefficient of determination ($R^2 = 0.9516$) and correlation coefficient (>0.9) approximating to 1, revealed strong relationships between standard length (SL) and total weight (W) of *C. longidorsalis* from the Sanaga River basin of Cameroon. Hence the body weights of the fish species could be accurately estimated based on their standard lengths (Ahmed *et al.*, 2011; Ezenwaji and Ezenwaji, 2009). Therefore, in agreement with previous observations on different fish species from various water bodies (Konan *et al.*, 2007; Tah *et al.*, 2012; Koffi *et al.*, 2014), the weight increased with the length of the fish.

The condition factor (K) describes the state of well-being or condition of fatness of a fish (Shinkafi *et al.*, 2013, Solomon *et al.*, 2017) in its environment, based on fatness - length and physiological condition relationship in the fish (Laurat *et al.*, 2019). The K factor provides information on the physiological state of the fish in relation to environmental changes and conditions and is an indicator for monitoring feeding intensity and growth rates in fishes (Oniye *et al.*, 2006, Laurat *et al.*, 2019) Desirable k factor values should be greater than 1 (Omitoyin *et al.*, 2013). The condition factor may vary for given species and between species and populations (Kartas and Quignard, 1984; Koné, 2000) due to the feeding mechanisms of the fishes (Kamaruzzaman *et al.*, 2010; Ahmed *et al.*, 2018) and the quantity and quality of feed available in the different environments (Soedarto and Tembalang, 2019).

In this study, the overall mean monthly condition factor for both sexes of *C. longidorsalis* from the Sanaga River basin was 5.85 ± 11.44 , being lowest (1.57 ± 2.21) in March and

highest (15.47 ± 19.72) in December. Given that the K factor values obtained in the present study were greater than 1, *C. longidorsalis* was considered to be in good physiological and environmental (habitat) conditions and in satisfying states of wellbeing in the River Sanaga basin during the entire study period (Omitoyin *et al.*, 2013). The higher mean K factor observed in males and during the dry season than in females and during the rainy season suggest that the wellbeing of the fish in that river was affected by sex and reproductive activities which negatively affected the female more than the male *C. longidorsalis* (Laurat *et al.*, 2019). The higher condition factors during the dry seasons compared to the rainy seasons were associated to the absence or reduction of wash-down water pollutants from the environment that adversely affects the fish physiological and health status. Overall, the k values in this study decreased with standard length and increased with weight of the fish in accordance with previously described reference situations (Waly *et al.*, 2015).

The K factors obtained in this study could be compared favourably with reports for different fish species in water bodies in parts of Africa including Cameroon. Lower K factor values were obtained for Alien Fish Species (0.70 ± 0.40) in the Mbô Floodplain Rivers in Cameroon (Tiogu  *et al.*, 2018, 2011), *Chrysichthys nigrodigitatus* (1.07 ± 0.09) in the Nkam River, Littoral Cameroon (Tiogu  *et al.*, 2020), *C. auratus* (1.0 to 2.9) in River Benin Nigeria (Ikomi and Odum, 1998); *Chrysichthys auratus auratus* (1.136 and 1.066) and *C. auratus longifilis* (1.137 and 1.016) in El-Nozha Hydrodrome (Bakhoum and Sayed-Ahmed, 2003), male *C. auratus* (1.87 ± 0.08) in Aiba Reservoir, Nigeria (Atobatele and Ugwumba, 2011) and *Coptodon zillii* (1.32), *Synodontis schall* (1.63) and *Chrysichthys nigrodigitatus* (0.97) in Lake Taabo (Aliko *et al.*, 2010). However, higher or comparable K factor values were observed for 22 fresh water fish species (0.884 ± 0.085 to 8.968 ± 1.818) in the Solomougou Dam Lake, Korhogo, C te d'Ivoire (Kouassi *et al.*, 2019).

The months with the lowest mean monthly K factor value (March: 1.57 ± 2.21 and April: 1.75 ± 3.17) suggested the spawning season of *C. longidorsalis* in the River (Atobatele and Ugwumba, 2011).

Condition factor of fish are affected by Regional water variations due to environmental conditions and availability of feeds as well as the strain, species, stress and sex of the fish (Tiogu  *et al.*, 2020; Laurat *et al.*, 2019; Omitoyin *et al.*, 2013; Atobatele and Ugwumba, 2011; Khallaf *et al.*, 2003). Also, the physicochemical parameters of water may influence the

vertical and horizontal migration of fishes in aquatic ecosystem, their distribution, feeding patterns and wellbeing (Haruna and Bichi., 2005). These factors could have contributed to the differences observed in the present study and previous reports.

Conclusion

This study revealed a strong positive correlation between standard lengths and total weights of *C. longidorsalis*, with b values < 3 indicating a negative allometric growth pattern and suggesting unfavourable growth conditions of *C. longidorsalis* in the Sanaga River basin. The negative allometric growth can be attributed to ecological differences and changes in water quality caused by the dam construction upstream, reduction of body size to escape predation, overfishing, fish mortality and pollution. However, the condition factor of *C. longidorsalis* in the Sanaga River basin was good, indicating that the river basin is suitable for its habitat. Further investigation on environmental parameters is essential to understand the cause and nature of the allometric growth pattern of *C. longidorsalis* at the Sanaga River basin to aid fisheries managers in their quest for legislation of sustainable management and conservation of fish resources in Cameroonian waters.

Disclosure of conflict of interest

The authors declare that there is no conflict of interest whatsoever among the authors in the cause of executing this research work.

Statement of informed consent

Informed consent was obtained from all individual participants included in the study.

References

- Adeyemi S.O., Bankole N.O., Adikwu A.I., 2009. Food and feeding habits of some commercially important fish species in Gbedikere Lake, Bassa, Kogi State, Nigeria. *International Journal of Lakes and Rivers*, 4(1):26-35.
- Ahmed E. Q., Poot-Salazar A., Ali Q.M., Bat L., 2018. Seasonal Variation in the Length-Weight Relationships and Condition Factor of Four Commercially Important Sea Cucumbers Species from Karachi Coast-Northern Arabian Sea. *Natural and Engineering Sciences*, 3(3): 265-281.
- Ahmed E.Q., Ali M.E., Aziz A.A., 2011. Length weight relationship and condition factor of six fish species in Atbara River and Khashm el – girba reservoir, Sudan. *Int. J of Agriculture Sciences* 3(1): 65 – 70.
- Akombo P.M., Atilé J.I., Adikwu I.A., Araoye P.A., 2013. Morphometric measurements and growth patterns of four species of the genus *Synodontis* (cuvier, 1816) from lower Benue River, Makurdi, Nigeria. *International Journal of Biological Research*, 1(4): 059-065.
- Alam M.M., Rahman M.T, Parween S., 2014. Morphometric characters and condition factors of five freshwater fishes from Pagla river of Bangladesh. *International Journal of Aquatic Biology* 2(1): 14-19.
- Al-Azizz S.A., Al-Niaem K.S. and Al-Hasson H.A., 2017. Seasonality of the Monogenean from Some Perciform fishes in Iraqi Marine Waters. *IOSR Journal of Agriculture and Veterinary Science* 10, 103-105.
- Aliko N.G., Da Costa K.S., Konan K.F., Ouattara A., Gourène G., 2010. Fish diversity along the longitudinal gradient in a man-made lake of West Africa, Taabo hydroelectric reservoir, Ivory Coast. *Ribarstvo*. 1 68 (2): 47-60.
- Anderson, R.O., and R.M., Neumann, 1996. Length, weight, and associated structural indices. Pages 447–482 in B. R. Murphy and D. W. Willis editors. *Fisheries techniques*, 2nd edition. American Fisheries Society, Bethesda, Maryland.
- Arranz I., Brucet S., Bartrons M., Garcia - Comas C., Benejam L., 2021. Fish size spectra are affected by nutrient concentration and relative abundance of non-native species across streams of the NE Iberian Peninsula *Science of The Total Environment* . <https://doi.org/10.1016/j.scitotenv.2021.148792>

- Atobatele O.E. and Ugwumba O.A., 2011. Condition factor and diet of *Chrysichthys nigrodigitatus* and *Chrysichthys auratus* (Siluriformes: Bagridae) from Aiba Reservoir, Iwo, Nigeria. *Revista de Biología Tropical*, 59 (3): 1233-1244
- Bakhom S. and Ahmed M., 2003. Some biological aspects of genus *Chrysichthys* in the Egyptian inland waters. *Egyptian Journal of Aquatic Biology and Fisheries*, 7 (3): pp. 259-277
- Bagenal T.B., Tesch F.W., 2022. Age and growth. In Bagenal T., éd. *Methods for assessments of fish production in freshwater*. 3rd ed. Oxford: IBP Handbook No. 3, Blackwell Scientific Publications; 1978. PP. 101-136. *International Journal of Science and Research Archive*, 03(02), 037–042.
- Bayhan, B., T.M., Sever and Taskavak E., 2008. Length-weight relationships of seven flatfishes (Pisces: Pleuronectiformes) from Aegean sea. *Turk. J. Fish. And Aquat. Sci.*, 8: 377-379.
- Béatrice A., Guy G. Teugels and Jean-François, 1997. Morphological and genetic differentiation of 11 populations of the African catfish *Chrysichthys nigrodigitatus* *Can. J.* 2001.75: 102-109
- Brummett R.E., Gockowski J., Bakwowi J., Etaba A.D., 2004. Analysis of aquaculture investments in periurban Yaoundé, Cameroon. *Aquacult Econ Manage* 8(5-6): 319-328.
- Brummett R.E., Gockowski J., Pouomogne V., Muir J., 2011. Targeting agricultural research and extension for food security and poverty alleviation: A case study of fish farming in Central Cameroon. *Food Policy* 36(6): 805-814.
- Brummett R.E., Jamu D.M., 2011. From researcher to farmer: partnerships in integrated aquaculture - agriculture systems in Malawi and Cameroon. *Int J Agr Sustain* 9(1): 282-289.
- Dekić R., Savić N., Manojlović M., Golub D., Pavličević J., 2016. Condition factor and organosomatic indices of rainbow trout (*Onchorhynchus mykiss*, wal.) from different brood stock. *Biotechnology in Animal Husbandry*. 32(2):229-237
- Elewuo U. and Francis A., 2012. Aspects of the biology of trap caught *Chrysichthys nigrodigitatus* (Lacepede: 1803) from the New Calabar River, Nigeria. *International*

Journal of Fisheries and Aquaculture Vol. 4(6), pp. 99-104, Available online at <http://www.academicjournals.org/IJFA> DOI: 10.5897/IJFA11.087

- Ezenwa 2004. A study of the reproductive aspects of *Chrysichthys nigrodigitatus* (lacepede) by the use of dorsal spine. J. fish Biol. 19 (3): 345-351.
- Ezenwaji N.E., Ezenwaji H.M.G., 2009. Length-weight Relationships and Condition Factor of *Citharinus citharus* and *Alestes baremoze* from Anambra River Basin, Nigeria. International Journal of Fisheries and Aquatic Studies <http://www.fisheriesjournal.com> Anim. Res. Intl.; 6(3):1107-1109.
- Fafioye O.O and Oluajo O.A., 2005. Length-weight relationship of five fish species in Epe lagoon, Nigeria. African J. Biotechnology 4 (7): 749-751.
- FAO, 2018. The State of World Fisheries and Aquaculture.
- FAO, 2017. Fishery and Aquaculture Country Profiles, The Republic of Cameroon, Profile 2007 updated March 2017.
- FAO, 2016. La situation mondiale des pêches et de l'aquaculture 2016. Contribuer à la sécurité alimentaire et à la nutrition de tous. Rome. 224 pages
- Forseth T., Naesje T. F., Jonsson B. and Harsaker K., 1999. Juvenile migration in brown trout: A consequence of energetic state. *Journal of Animal Ecology* 68, 783–793.
- Froese R., 2006. Cube Law, Condition factor and weight–length relationships: History, meta-analysis and recommendations. *Journal of Applied Ichthyology* 22(4), 241 – 253. DOI:10.1111/j.1439-0426.2006.00805.
- Froese R., Tsikliras A. C. and Stergiou K. I., 2011. Editorial note on weight length relations of fishes. *Acta Ichthyol. Piscat.* 41 (4), 261–263.
- Haruna M. and Bichi A.H., 2005. Studies on length-weight relationship and condition factor of the cichlids of Tomas Lake, Kano, Nigeria. *Biol. Environ. Sci. J. Trop.*, 2: 94-100.
- Henderson P.A., 2005. The Growth of Tropical Fishes. In: Val A.L., Vera M.R. and Randall D.J. (Eds.), *The Physiology of Tropical Fishes*. Vol. 21, Academic Press, USA, pp: 85-99.
- Hossain M.Y., 2010. Morphometric relationships of length-weight and length-length of four Cyprinid small indigenous fish species from the Padma River (NW Bangladesh). *Turk. J. Fish. Aquat. Sci.*, 10: 131-134. DOI: 10.4194/trjfas 2010.0118

- Ikomi R.B. and Odum O., 1998. Studies on aspects of the ecology of the catfish *Chrysichthys auratus* Geoffrey St. Hilaire (Osteichthyes; Bagridae) in the River Benin (Niger Delta, Nigeria). *Fish. Res.* 35(3):209-218.
- Idodo-umeh, G., 2002. The feeding ecology of bagrid species in River Ase, Niger Delta, southern Nigeria. *Trop. Freshwater Biol.* 11: 47-68.
- Idodo-umeh G., 2005. Freshwater fishes of Nigeria (Taxonomy, Ecological notes, diets and utilization). Umeh Publishers Limited, Benin City, Nigeria. 232p.
- Ighwela K.A., Ahmed A.B., Abol Munafi A.B., 2011. Condition factor as an indicator of growth and feeding intensity of Nile tilapia fingerlings (*Oreochromis niloticus*) fed on different levels of maltose. *American- Eurasian J Agric & Environ Sci* 11(4): 559-563.
- Ikpi U. and Okey B. I., 2010. Estimation of dietary composition and fecundity of African carp, *Labeo coubie*, Cross River, Nigeria. *J. Appl. Sci. Environ. Manage.* 14 (4): 19-24
- Isa M. M., Salmah C., Rawi M.d., Rosalina R., Shahrul Anuar M. S. and Amir Shah Ruddin M.d., 2010. Length - weight relationships of freshwater fish Species in Kerian River Basin and Pedu Lake. *Research Journal of Fisheries and Hydrobiology*, 5(1): 1-8.
- Johnson M.G. and Tamatamah A.R., 2013. Length Frequency Distribution, Mortality Rate and Reproductive Biology of Kawakawa (*Euthynnus affinis-Cantor*, 1849) in the Coastal Waters of Tanzania. *Pakistan Journal of Biological Sciences*, 16: 1270-1278.
- Kartas F. and Quignard J.P., 1984. « La fécondité des poissons téléostéens. Collection de Biologie des Milieux Marins ». 5e Ed., Masson, 121 p.
- Kamaruzzaman Y., Muhammad N.O., Siti-Fairuz C.O., Hasan M.T., Nor-Nazuha M.N., Nor-Dalilah M.N., 2010. Study on ω -fatty acids from Malaysian giant mudskipper (*Periophthalmodon schlosseri*) fish oil. *Oriental Journal of Chemistry* Vol. 26(3), 861-864.
- Kaktcham P.M, Zambou N.F., Fonteh A.F., Del Perez Chabela M., 2015. Aquaculture in Cameroon and potential of lactic acid bacteria to be used as diseases controlling agents: A Review. *Nacameh* 9(1): 1-18.
- Khallaf E.A., Galal M., Authman M., 2003. The biology of *Oreochromis niloticus* in a polluted canal. *Ecotoxicology*. 12:405-416.

- King R.P., 1994. Seasonal dynamics in the trophic status of *Papyrocranus afer* (Gunter, 1868) (Notopteridae) in a Nigerian Rainforest Stream. *Rev Trop. Hydrobiol.*, 27(2): 143-155.
- Koffi B.K., Aboua B.R.D., Koné T., Bamba M., 2014. Fish distribution in relation to environmental characteristics in the Aby-Tendo-Ehy lagoon system (Southeastern Côte d'Ivoire). *African Journal of Environmental Science and Technology*, 8 (7): 407-415.
- Konan K.F.1., Ouattara A.1, Ouattara M.1, Gourcne G.1., 2007. Weight-Length Relationship of 57 fish species of the Coastal Rivers in South - Eastern of Ivory Coast. *Ribarstvo*, 65 (2), 49 - 60.
- Koné N. 2012. Study of fishing, population parameters and reproductive biology of Clupeidae *Pellonula leonensis* (Boulenger, 1916) in the Kossou and Taabo dam lakes (Bandama river, Côte d'Ivoire) [Doctoral thesis]. Ivory Coast: Félix HOUPHOUËT-BOIGNY University; *International Journal of Science and Research Archive*, 2022, 03(02), 037–042
- Koné T., 2000. Diet and reproduction of a lagoon tilapia *Sarotherodon melanotheron* (Rüppell, 1852) in the Bia River and the Ayamé reservoir (Ivory Coast) [Doctoral thesis]. Belgium: Katholieke Universiteit Leuven.
- Kouassi K.D., Diaby M., Amon Y. N. and N'da Konan, 2019. Length-Weight relationship and condition factor for 22 freshwater fish species from Solomougou Dam Lake (Korhogo, Côte d'Ivoire) *JFAS* 8(1): 172-175
- Laurat H.T., Isiyaku M.S. and Akange E.T., 2019. Length-weight relationships and condition factor of *Oreochromis niloticus* and *Citharinus citharus* in lower river Benue, Nigeria. *International Journal of Fisheries and Aquatic Studies*, (7): 21-25.
- Le Cren E.D., Nov 1951. The length-weight relationship and seasonal cycle in gonadal weight and condition in the perch (*Perca fluviatilis*). *Journal of Animal Ecology*. 20: 201-219.
- Mbakane E.M., Luus-Powel W.J., Matla M.M., Theron J., 2010. Three dactylogyrids (*dactylogyridae bychowsky* 1933: Monogenea) from selected cyprinid species of the Nwanedi-Luphephe Dams in the Limpopo Province, South Africa. *Journal of the South African Veterinary Association*. 81:186-187

- Mon E.E., Zin P.P., Dwe K.L., 2020. Length-weight relationship, condition factor and sex ratio of tade mullet (*Liza tade* Forsskal, 1775) from Mawlamyine, Mon state, Myanmar. *J Aquac Mar Biol.*; 9(4):107-112. DOI: [10.15406/jamb.2020.09.00285](https://doi.org/10.15406/jamb.2020.09.00285)
- Montchowui E., Lalèye P., Poncin P. and Philippart J.C., 2010. Reproduction strategy of *Labeo senegalensis* Valenciennes 1842 (Teleostei Cyprinidae) in the Ouémé basin Benin African Journal of Aquatic Science, 35 (1): 81-85.
- Montchowui E., Ovidio M., Lalèye P., Philippart J. C. and Poncin P., 2011a. “Stratégies de reproduction et structure des populations chez *Labeo parvus* Boulenger, 1902 (*Cypriniformes: Cyprinidae*) dans le bassin du fleuve Ouémé au Benin”. *Annales des Sciences Agronomiques*, 15 (2):153-171.
- Montchowui E., Bonou A. C., Lalèye P., Philippart J. C. and Poncin P., 2011b. Successful artificial reproduction of the African carp: *Labeo parvus* Boulenger, 1902 (Pisces Cyprinidae). *International Journal of Fisheries and Aquaculture*, 3(3): 35-40.
- Montchowui E., Lalèye P., N'tcha E., Philippart J. C. and Poncin P., 2011c. Larval rearing of African carp, *Labeo parvus* Boulenger, 1902 (Pisces: Cyprinidae), using live food and artificial diet under controlled conditions. *Aquaculture Research*, 1-8.
- Ndome C.B., Eteng A.O. and Ekanem A.P., 2012. Length-weight relationship and condition factor of the smoothmouth marine catfish (*Carlarius heudelotii*) in the gulf of Guinea, Niger delta, Nigeria. *AAFL Bioflux* 5, 163-167.
- Offem B.O., Akegbejo S.Y. and Omoniyi I.T., 2008. Diet, size and reproductive biology of the silver catfish, *Chrysichthys nigrodigitatus* (Siluriformes ; Bagridae) in the Cross River, Nigeria. *Rev. Biol. Trop.* 56(4): 1785- 1799
- Offem B.O., Samsons Y.A., Omoniyi I.T., 2009. Trophic ecology of commercially important fishes in the Cross River, Nigeria. *The Journal of Animal and Plant Sciences*; 19(1):37- 44
- Offem B.O., Samson, A. Y. and Omoniyi, I. T., 2009. Fish composition and abundance in the wetlands of Cross River, Nigeria. *Aquatic Ecology*, 43:1155- 166
- Offem B.O., Samsons Y.A. and Omoniyi, I. T., 2009. Length-Weight Relationship, Condition Factor and Sex Ratio of Forty Six Important Fishes in a Tropical Flood River. *Research Journal of Fisheries and Hydrobiology*, 4, (2), 65 - 72.

- Oladosu G. A. and Oladosu O. (2007). Sex Determination in *Heterotis niloticus* (Cuvier 1829) based on morphometric features. International Journal of Agricultural Sciences, Environment and Technology (6), 22-30.
- Omitoyin B.O., Salako A.E., Eriegha O.J., 2013. Some Ecological Aspects of *Oreochromis niloticus* and *Heterotis niloticus* from Ona Lake, Asaba, Nigeria. World Journal of Fish and Marine Sciences. 5(6):641-648.
- Oniye S.J., Adebote D.A., Usman S.K., Makpo J.K., 2006. Some aspects of the biology of *Protopterus annectens* (Owen) in Jachi Dam near Katsina, Katsina state, Nigeria. Journal of Fisheries and Aquatic Research. 1:136-141.
- Pauly D., 1983. Some Simple Methods for the Assessment of Tropical Fish Stocks. FAO Fish. Tech. Pap., (234):52 p
- Pouomogne V., Brummett R.E., Gatchouko M., 2010. Impacts of aquaculture development projects in Western Cameroon. J Appl Aquaculture 22(2): 93- 108.
- Pouomogne V., Pemsil D., 2008. Recommendation domains for ponds aquaculture, country case study. Development and status of freshwater aquaculture in Cameroon. World Fish Center, Studies and Reviews No. 1871, Penang, Malaysia, pp: 60.
- Quarcoopome, 2017. Length-weight relationship, condition factor and sex ratio of two *Chrysichthys* species (pisces: claroteidae) of socio-economic importance from kpong reservoir in Ghana. CSIR-Water Research Institute, P. O. Box AH 38, Achimota, Ghana. Ghana J. Sci. 57, 13-22
- Ragheb E., 2014. Fishery biology of catfish *Chrysichthys auratus*, Geoffroy Saint-Hilaire, 1809, (Family: bagridae) from Damietta branch of the river Nile, Egypt. Egyptian Journal of Aquatic Research, vol. 42, no. 3, pp. 349–356.
- Ricker, W. E., 1975. Computation and interpretation of biological statistics of fish populations. Bull. Fish Res. Bd. Can. 191: 209 – 210.
- Riedel R., Caskey L.M., Hurlbert S.H., 2007. Length weight relations and growth rates of dominant fishes of the Salton Sea: implications for predation by fish-eating birds. Lake and Reservoir Management. 23:528- 535.
- Risch and Thys van den Audenaerde, 1981. *Chrysichthys longidorsalis*, Yaoundé, Cameroon. R.Brummett@cgiar.org (corresponding author) 2 Royal Museum for Central Africa, B-3080 Tervuren, Belgium.

Risch, L. and Vreven E.J., 2007. Claroteinae. p. 607-629. In M.L.J. Stiassny, G.G. Teugels and C.D. Hopkins (eds.). The fresh and brackish water fishes of Lower Guinea, West-Central Africa. Volume I. "Collection Faune et Flore tropicales. Institut de Recherche pour le Développement, Paris, France, Muséum National d'Histoire Naturelle, Paris, France, and Musée Royal de l'Afrique Centrale, Tervuren, Belgium". 800 pp. (Ref. [74659](#))

Shinkafi B. A. and Rasaq I., 2013. Food and feeding habits of *Lates niloticus* (Linnaeus, 1762) from River Rima in North-Western Nigeria. Journal of Agriculture and Environment Vol. 9 No. 1 and 2: 101-108 ISSN 1595465X

Sikoki F. D., Hart A. I., Abowei, J.F.N., 1999. Gill net selectivity and fish abundance in the lower Nun River, Nigeria. Journal of Applied Science and Environmental Management (1); 13-19.

Soedarto J.L., Tembalang S.H., 2019. Length-Weight Relationship and Condition Factor of Black Sea Cucumber (*Holothuria atra*) in Karimunjawa National Marine Park Area. MAQUARES. 8(4): 327-336

Solomon S.G., Okomoda V.T., Achodo S., 2017. Biometric relationship, food and feeding habit of *Heterotis niloticus* (Cuvier, 1829) and *Labeo coubie Ruppell*, 1832 from lower River Benue. Journal of Aquaculture Engineering and Fisheries Research. 3:19-27.

Tah, L., Goore G.B. and Da Costa K.S., 2012. Length-weight relationship for 36 freshwater fish species from two tropical reservoirs: Ayamé I and Buyo, Cote d'Ivoire. Rev. Biol. Trop. 60(4):1847-1856.

Thrusfield M. Veterinary epidemiology. (3rd ed.). Oxford, UK: Blackwell Science Ltd, a Blackwell publishing company; 2007.

Tiogue T.C., Tomedi-Tabi E.M., Nguenga D., and Tchoumboue J., 2010. "Caracteristiques de morphologie générale et de croissance du *Cyprinidae* Africain *Labeobarbus batesii* dans la plaine inondable des Mbo, Cameroun," International Journal of Biological Sciences, vol. 4, no. 6, pp. 1988–2000.

Tiogué C.T., Tomedi-Tabi E.M., David Nguenga M.E., Joseph T., Guegang T. and Joseph T., 2018. Alien Fish Species in the Mbô Floodplain Rivers in Cameroon. Hindawi

International Journal of Biodiversity Article ID 5349341, 9 pages
<https://doi.org/10.1155/2018/5349341>

Tiogue T.C., Zebaze T.B, Zango P., Tomedi-Tabi E.M., 2020. Reproductive Strategy of *Chrysichthys nigrodigitatus* (Lacepede,1803) in a Natural Environment in the Nkam River, Littoral Cameroon Hindawi International Journal of Zoology Volume 2020, Article ID 1378086, 8 pages.

Tu C.Y., Chen K.T. and Hsieh C., 2018. Fishing and temperature effects on the size structure of exploited fish stocks. *Sci Rep* **8**, 7132. <https://doi.org/10.1038/s41598-018-25403-x>.

Waly N., Khady D., Ousseynou S., Papa N., Jacques P., 2015. The Length-Weight Relationship and Condition Factor of white grouper (*Epinephelus aeneus*, Geoffroy Saint Hilaire, 1817) at the south-west coast of Senegal, West Africa. *International Journal of Advanced Research*, Volume 3, Issue 3, 145-153

Zango P., Tomedi E.T.M., Efolé E.T., Tiogué T.C., Nguenga D., Kamanke K.M.S., Mikolasek O., Tchoumboué J., 2015. “Performances de reproduction du poisson chat endogène du Cameroun *Clarias jaensis* (Boulenger, 1909) en milieu contrôlé”. *Int. J. Biol. Chem. Sci.*; 10(2): 533-542.

Zango P., Tomedi E.T.M., Tiogué T.C., Efolé E.T., Pouomogne V., Mikolasek O., Tchoumboué J., 2017. “Performances comparées de survie et de croissance d’*Oreochromis niloticus* associée à *Clarias jaensis* et *Clarias gariepinus*”. *Cameroun. Journal of Experimental Biology*; 11 (1):1-8.