

Impacts of Climate Change, Land Use and Land Cover Changes on Watersheds in the Upper East Region of Ghana

ABSTRACT

Issues of global warming and climate change as a result of the aggravation of greenhouse gases and other anthropogenic activities have remained a global discourse since time immemorial. Climate change has increased temperatures and reduced the amount and distribution of rainfall. This has become a major concern to scholars and researchers alike. This study, therefore, investigates the impacts of climate change in the North Eastern part of Ghana between 1985 and 2016. The study looks at land use and land cover changes in the watersheds of the Tono Reservoir using satellite images. Satellite images were extracted and imported into ERDAS 2010 for processing. Layer stacking was performed to put all the bands together as one file. Sub-setting was done to extract the Tono Reservoir and its environs. Climate variables such as rainfall, temperature were analysed to find their relationships with water levels of the Tono reservoir. It was found that rainfall and water levels of the Tono reservoir were decreasing at 4.4% per decade and 8% per annum, respectively, while closed forests and grasslands had reduced by 5.51% and 7.44%, respectively, between 1985 and 2016. There were increases in open forests (2.8%), shrublands and bushes (0.97%) and water bodies (1.2%). The study recommends that collaborative efforts between the Ministry of Environment, Science, Technology and Innovation, Ministry of Water Resources, Ministry of Lands and Natural Resources and the Ministry of Food and Agriculture were necessary to safeguard natural resources in the country.

Keywords: *Tono reservoir, Climate change, Land use, Water level, Landsat image*

1. Introduction

Issues of global warming and climate change due to increasing greenhouse gases emissions and other anthropogenic activities have been a major subject of contention [1, 2]. Climate change has resulted in the amplification of global and local temperatures and a reduction in the amount and distribution of rainfall[3]. The amount of water vapour available for rainfall is greater for higher base temperatures or warmer temperatures due to enhanced greenhouse conditions [4]. Climate change has been considered as the most threatening challenge in recent times since the adoption of the United Nations Framework on Climate Change in 1992 [5].

It is reported that the build-up of greenhouse gasses, particularly carbon has the potential to affect global, regional and local climates. This is worsened by changes in land use and land cover changes due to population growth and urbanization [6]. Carbon dioxide which is the principal greenhouse gas in the atmosphere creates a greenhouse effect ultimately leading to global warming [7]. Vegetation cover such as forests is a sink to carbon and absorbs carbon dioxide for photosynthesis thereby contributing significantly to reducing global warming [8]. Vegetation cover also binds the soil together in watersheds and regulates the hydrological process [9]. Impacts of climate change are found in terms of increasing temperature, decreasing the number of rainy days, rainfall variations, frequent droughts, severe heat waves, and evidence of periodic floods. Such trends threaten crop yields and risk the food security of poorer countries where agriculture is rain-fed [10].

46 Through land use and land cover changes, forestlands have been converted to farmlands to
47 meet growing food demands and development [11].According to [12], over reliance on land for various
48 uses to satisfy human needs are now changing the land use and land cover (LULC) patterns in various parts of the
49 world.For example, the conversion of closed forest areas to open forests or bare lands may either be
50 natural or human-induced [13]. Many forested lands in Ghana including the scarce vegetation
51 resource of the Upper East Region are gradually being lost as a result of increasing agriculture
52 and urbanization [14]. Land use and land cover changes affect the environment and may reduce
53 water availability [15] and decrease the welfare and adaptability of farmers [16].

54 The reduction in the population of trees in forest lands decreases their potential for the
55 provision of ecosystem services by altering hydrological processes such as infiltration,
56 groundwater recharge, base flow and runoff [17]. Agriculture which is the main livelihood
57 activity in many developing countries is the main driver of forest conversion into farmlands [18].
58 Commercialization of agriculture requires the expansion of farmlands and that stimulates the
59 conversion of forestlands leading to hydrological changes [3]. However, efforts made by the
60 government of Ghana to protect forestlands have been thwarted by a reduced number of forest
61 guards [19].

62 [20] in their study of the climatic variability of the Upper East Region observed that while
63 the temperature was increasing, rainfall was decreasing. The decreasing inflow of water from
64 overland flow into dugouts and reservoirs and increased evapotranspiration is adversely affecting
65 the hydrology and causing these systems to dry up [21]. Research on the Weija shows that land
66 use and land cover changes affected the hydrology of the Densu Reservoir [22]. In India, satellite
67 imagery was used to study land use and land cover changes [23]. Their study also provides for a
68 more holistic environmental resource management in developing countries with a diverse
69 patchwork of different uses of natural resources that can be harnessed[24]. While these hydro-
70 climatic changes have been proven by earlier research [25], little work has been made on the
71 relationship between climate variables and water sources on the ecological systems of
72 watersheds in the Upper East Region of Ghana.

73 The Tono Reservoir is the largest reservoir in the northern sector of Ghana [26] and was
74 constructed to boost dry season agriculture in the Upper East Region. It is for this reason that, the
75 study sought to investigate the relationship between climate variables and water levels in the
76 Tono Reservoir in the Upper East Region of Ghana. The study is therefore relevant for the
77 management of the Irrigation Company of Upper Region (ICOUR) and the Irrigation
78 Development Authority (IDA) whose duty is to manage the Tono Reservoir to understand the
79 dynamics of climate variables and water levels of the Tono dam and to replicate the findings of
80 the research in other areas to preserve water bodies.

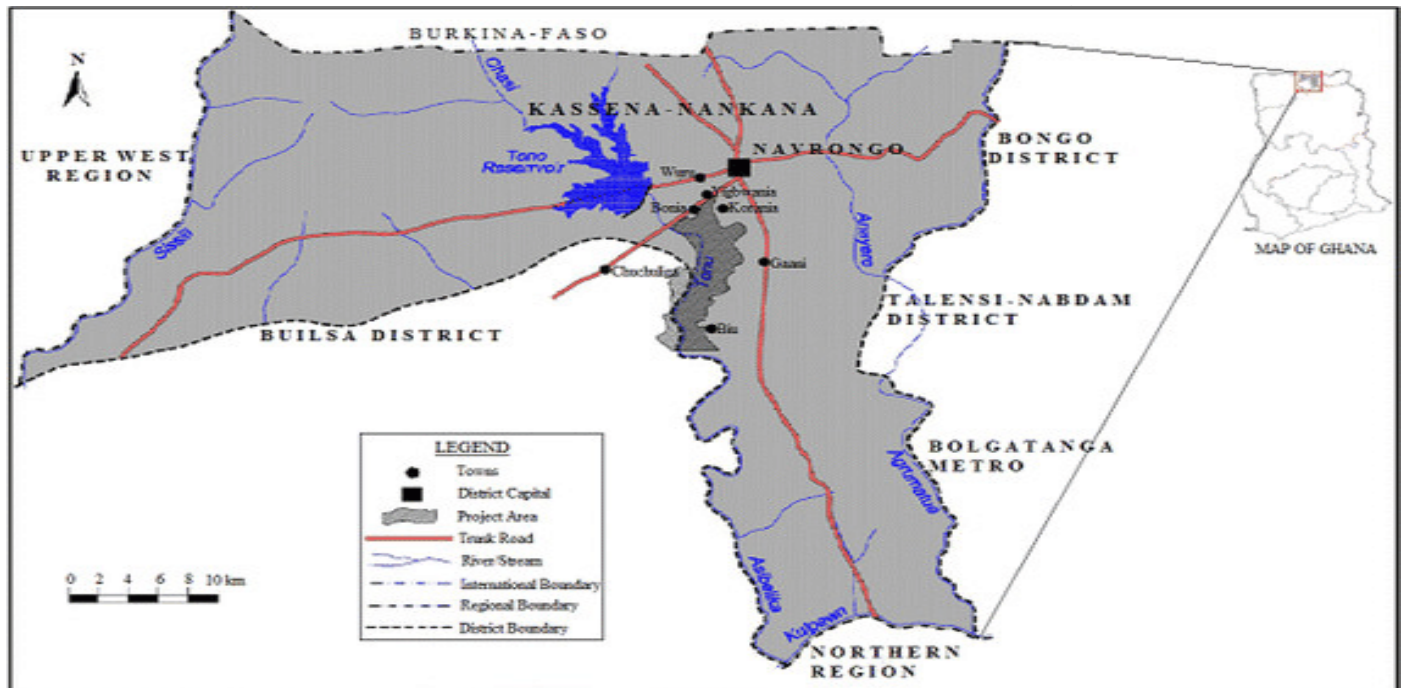
81

82 2. Study Area and Methodology

83 2.1 Description of the study area

84 The Tono Reservoir is located in the Kassena Nankana Municipality of the Upper East
85 Region bounded by latitude 10.8423°N and longitude 1.3276°W and latitude 10.88472°N and
86 longitude 1.09028°W (Figure 1). The effect of the North-East Trade Winds which are
87 characterized by dry and dusty winds and originate from the Sahara Desert is severe in the study
88 area in December and January. The annual temperatures in the municipality (a minimum of 15°
89 C and a maximum of 42° C) are associated with very low mean annual rainfall, which ranged

90 between 700 - 1300 mm [27]. The rainy season in the area is unimodal and comes between June
 91 and September [28]. The vegetation is classified as Guinea Savannah Woodland but human
 92 activities lately make it difficult to distinguish it from the Sudan Savannah [29]. Agriculture is
 93 the major economic and land-use activity of the area. Due to the very high variability in rainfall,
 94 the Tono reservoir was constructed in 1975 to provide irrigation water for a-year round
 95 agriculture to ensure food security. It has a volume of $9.26 \times 10^7 \text{m}^3$ covering a surface area of
 96 18.6km^2 with a catchment area of 650km^2 and a gross project area of 3,860 hectares.
 97



98
 99 **Figure 1. Map of Tono Reservoir in the Upper East Region**

100 **2.2 Data collection**

101 Secondary data of rainfall and temperature from 1960 to 2015 were obtained from the
 102 Ghana Meteorological Agency. Similarly, records of water levels of the Reservoir from 1987 to
 103 2015 were obtained from the Irrigation Company of Upper East Region. Two Landsat satellite
 104 images on path 195 and row 053 of resolution 30 m of the catchment area of the Tono reservoir
 105 in 1985 and 2016 were obtained from the United States Geological Survey (USGS) Global
 106 Visualization Viewer site (<http://glovis.usgs.gov>). The satellite images for the Tono Reservoir
 107 were taken in the month of March for both 1985 and 2016. The choice of the dry season is to
 108 obtain images with minimal cloud cover to distinguish the spectral signatures of the different
 109 land-cover types especially, the bare areas. Delineation of the catchment area was done based on
 110 an automated river network overlay [30]. In this approach, the basic unit is a river stretch which
 111 is referred as the length between two nodes. Each cell of a grid is allocated to river stretches
 112 using the shortest distance algorithm.

113 **2.3 Data analysis**

114 Simple linear regression analysis was performed to find the decreasing or increasing
 115 trends in rainfall, temperature and water levels. The Landsat images were extracted and imported

116 into ERDAS 2010 for processing. Layer stacking was performed to put all the bands together as
117 one file. Sub-setting was done to extract the Tono Reservoir and its environs.
118 Classification accuracy was evaluated using ground truth data obtained from GPS field surveys
119 existing maps, Google Earth and the Landsat image as the reference to generate the confusion
120 matrices, which comprise the omission error, commission error, and kappa statistic. Stratified
121 random sampling was used for the point selection. A minimum of 60 samples for each class was
122 taken based on the rule of thumb theory suggested by [30]. Two kinds of data were picked for
123 each land use and land cover feature: classification data and validation data. The maximum
124 likelihood algorithm (MLA) was used to perform the supervised classification using
125 ArcGIS10.2.1. Six classes in all were obtained. The Accuracy Assessment Tool (AAT) was used
126 to measure how accurate the classification was [31].

127 The change matrix tool in the ERDAS Imagine 2010 was used to produce the change
128 conversions that had taken place in the land use and land cover features. The ArcGIS 10.2.1 was
129 used to prepare the final maps of the land use and land cover classification. The maximum
130 likelihood algorithm (MLA) of the ERDAS Imagine 2010 was used to perform the supervised
131 classification of the land use and land cover features of the Tono Reservoir and its environs. In
132 supervised classification, the MLA is one of the most popular methods used with remote sensing
133 image data [32]. The MLA uses a method that is based on the probability that a pixel belongs to
134 a particular class. This method relies heavily on a normal distribution of the data in each input
135 band and tends to over-classify signatures with relatively large values in the covariance matrix,
136 hence, requires long time of computation. Ground verification was done to confirm images that
137 were not clear on the satellite images using Geographic Positioning Systems (GPS) coordinates.
138 Based on the ground truthing, the misclassified areas were corrected using the recode option in
139 ERDAS Imagine. The land use features of the Tono Reservoir environs were classified into six
140 (6) classes which are closed forest, open Forest, shrub land and bushes, grassland, farmland and
141 water bodies. The change matrix was done to determine the changes that have occurred in the
142 catchment area over the 30-year period (1985-2016). This matrix gives an idea of which land
143 feature is being changed into the other land features.

144 3. Results and Discussion

145 3.1 Trend of rainfall in Upper East Region of Ghana

146 The trends in rainfall was linear and moving downward with $R^2= 7$, R^2 adjusted= 5 and suggest
147 that the model could not explain much of the variation in rainfall (Figure 2). The trend in rainfall
148 was a decreasing polynomial trend with the equation:

$$149 \quad 90.29 - 0.044t + 0.000044t^2 \quad (1)$$

150 Where, t is the number of years. The equation shows that, the decreasing trend of rainfall is a
151 quadratic and hence not uniform.

152

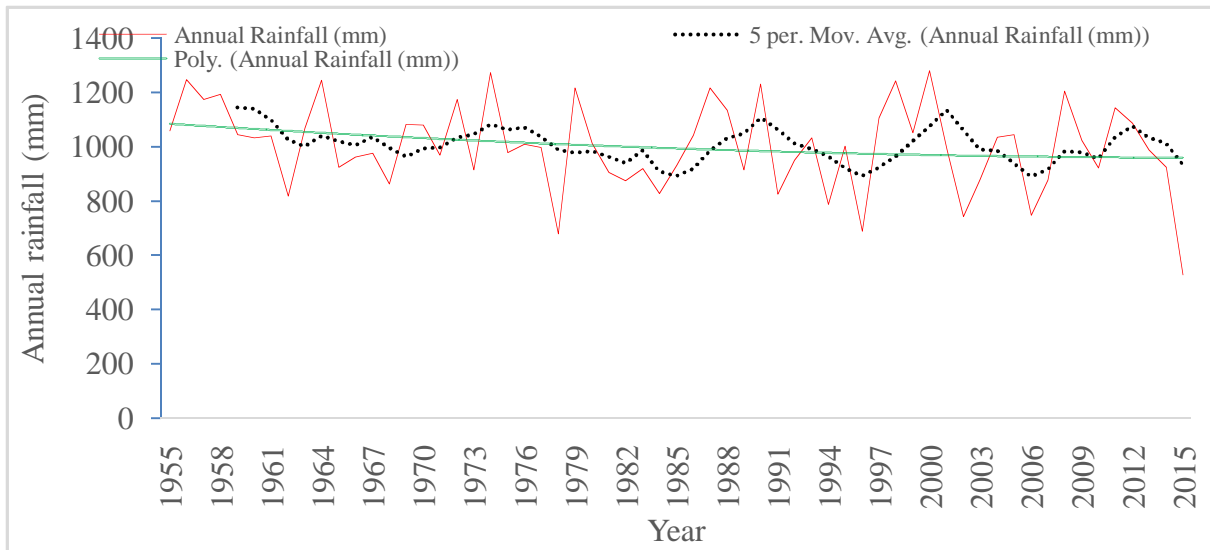


Figure 2: Rainfall trend in the Upper East Region of Ghana (1954 - 2014)

The mean annual temperatures for maximum temperature were increasing with $R^2 = 84.5$ and R^2 -adjusted = 83.8. The regression equation for maximum temperature was:
 $34.078 + 0.03037t - 0.00002t^2$ (2)

Where t is time in years.

Figure 3 suggests that the annual maximum temperatures were increasing and this would result in an increased number of hot days in the future. Surface water bodies such as dugouts and reservoirs would reduce in volumes due to high evaporation losses. Temperature affects transpiration rates and other environmental physiological activities. Whilst organisms may adapt to these changes, the combined effect of decreasing rainfall and rising maximum temperatures may have dire consequences on the biodiversity of the area.

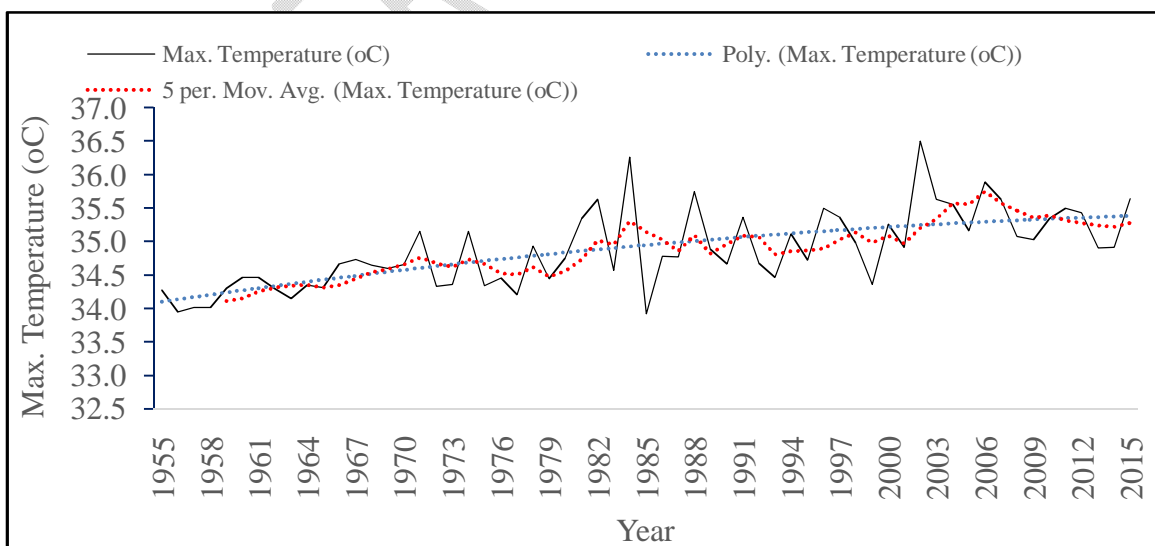


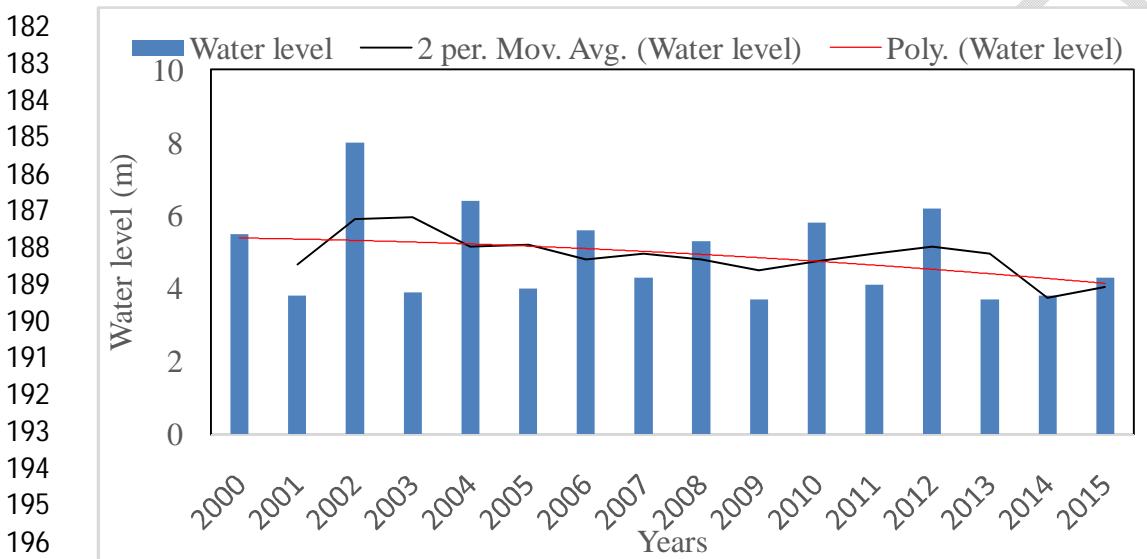
Figure 3. Trend of maximum temperatures in the Upper East Region, Ghana (1954-2014)

170 **3.2 Water levels in the Tono Reservoir**

171 Raw water from reservoirs and dugouts in the Upper East Region is used for irrigation,
 172 building and construction, drinking and watering animals [26]. The Tono reservoir is the largest
 173 reservoir in the Upper East Region of Ghana. The study shows that the Tono reservoir had an
 174 average minimum and maximum water depth of 3.7 and 8.0 m respectively, with a mean water
 175 depth of 4.9 m. This study found that the water level was decreasing with $R^2=79.5\%$ and R^2
 176 adjusted $=78.4\%$. The equation describing the water level at the Tono Reservoir at any time was:

177
 178
$$\text{Water level (m)} = -0.0829t + 171.4 \text{ m} \tag{3}$$
 Eq.

179
 180 Where t = number of years



197 Figure 4: Mean annual levels of the water levels in the Tono Reservoir

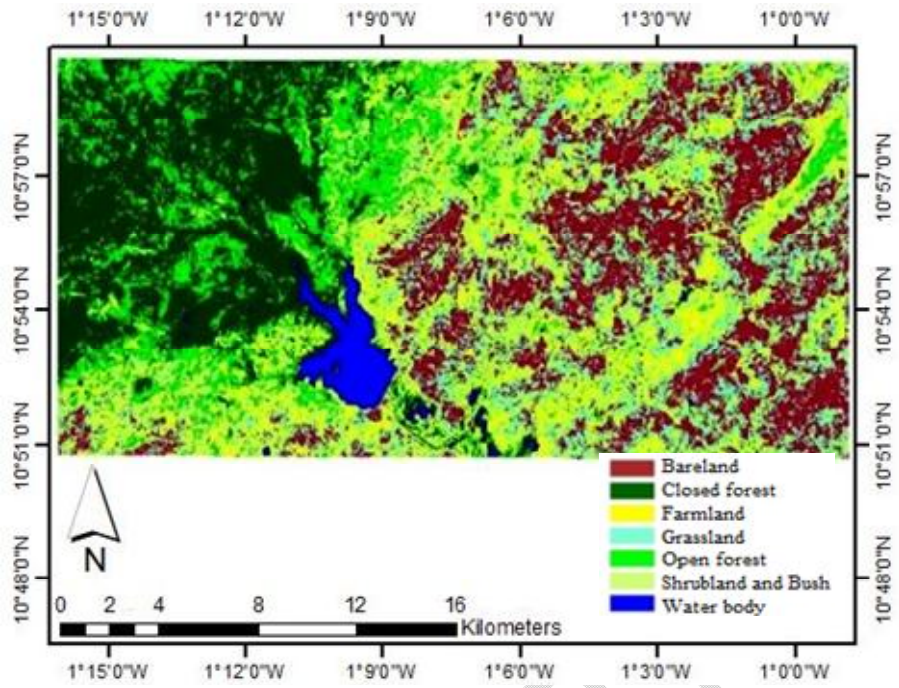
198
 199
 200 Whilst abstraction could affect reservoir level, the intensity of these water abstraction
 201 activities does not lend credence to it causing a significant effect on the water level. The
 202 reduction in the water level of water in the Tono reservoir could therefore be attributed to
 203 excessive evaporation because of siltation and the resulting increase in the rate of evaporation
 204 due to increase maximum temperature. The reduction in the water level led to the occasional
 205 closure of the reservoir in some particular years [33]. Aside from the significant impact on
 206 livelihoods, these drastic environmental changes would affect the natural environment, especially
 207 wetland and riparian flora and fauna.

208 **3.3 Land use and land cover distribution and change**

209 It was noticed that in 1985 the closed forest was predominant in the then Kassena Nankana
 210 East District. The open forest dominated the North-East of the Tono Reservoir. Only some small
 211 patches of farmland could be noticed within the closed forest and the open forest. Figure 5
 212 Shows the land use and land cover in 1985

213
 214
 215

216
217



218
219

220 Figure 5: Shows the land use and land cover in 1985

221
222
223

224 The total catchment area of the Tono Reservoir is about 650 km² and grassland covers
225 21.66%. The closed forest also covered approximately 20% of the total land area whereas water
226 bodies covered only 2.35% of the total land area under consideration in the year 1985. Figure 6
227 shows the changes that took place in 2015.

228
229

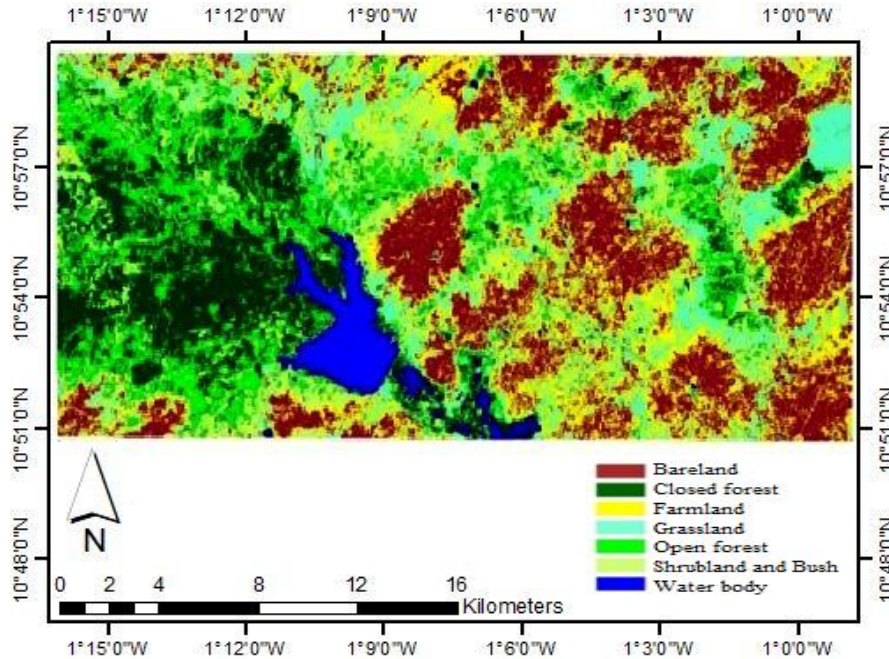
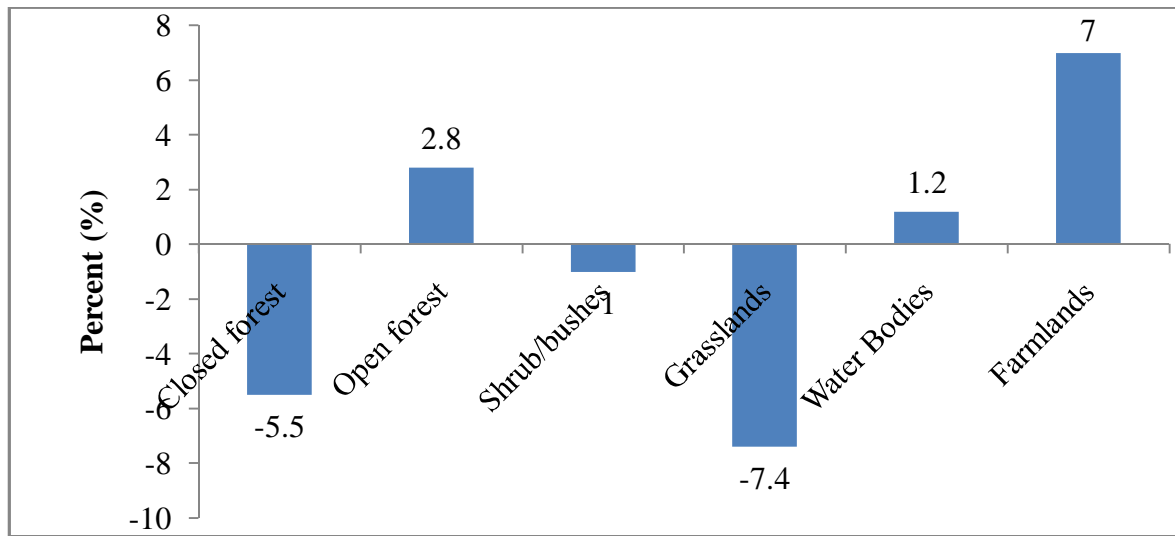


Figure 6. Shows the changes that took place in 2015

230
231
232
233
234
235
236
237
238
239
240
241
242
243
244
245
246
247
248
249
250
251
252
253
254
255
256
257
258

However, in the year 2016, the closed forest and grassland had reduced and both now covered about 14% of each of the land area. Farmland that covered about 14% of the area in 1985 had now increased to about 21% in 2016. Figure 7 indicates the changes that occurred between 1985 and 2016. The population of the region has seen substantial growth [34]. Agriculture, which is the main economic activity of the study area is a major driver of land use and land cover change. According to [35], when the population grows more lands are used for food cultivation. According to [36] due to urbanisation a lot more lands are needed to meet the housing needs of the growing population. Without diversification of economic activities in the Upper East Region, residents are glued to agriculture, wood harvesting and charcoal production. These findings are similar to [37] in their study of the Kakum National park of the Assin South District of Ghana. The Kassena Nankana Municipal Assembly, the Irrigation Company of the Upper East Region and the Irrigation Development Authority of Ghana have failed to look at the linkages between LULC change and the sustainability of the Tono dam which is very important to the development agenda of the Upper East Region and support initiatives that contribute to achieving sustainable communities by 2030 [38].



259 Figure 7. Percentage change in land use between 1985 and 2016 around the Tono Reservoir
 260
 261

262 **3.4 Accuracy Assessment of the Classification of Land Use Features (1985 and 2016)**

263 According to Table 1, the classified 2016 map (Figure) is in good agreement with the ground-
 264 truth data revealing an overall accuracy of 93.28 % and an overall kappa index of 0.92. Apart
 265 from the producer's accuracy of open forest and closed forest, the remaining classes had both
 266 user's and producer's accuracies > 90% (Table 1). With kappa indices > 0.93, grassland and
 267 water bodies attained the best agreement. With overall accuracy of 95.73 % and an overall kappa
 268 index of 0.91, the 1985 classified map shows a good agreement with reference to the ground-
 269 truth data. With exception of the user's and the producer's accuracies of open forest, the
 270 remaining classes had both user's and producer's accuracies > 91% (Table 1). Again, the shrubs
 271 and bushes and farmlands classes had a good agreement with the corresponding ground-truth
 272 classes.

273 Table 1. Accuracy assessment between ground-truth and classified land use and land cover
 274 patterns in 1985 and 2016.

		<i>Closed forest</i>	<i>Open forest</i>	<i>Shrub and bushes</i>	<i>Grassland</i>	<i>Farmland</i>	<i>Water bodies</i>
2016	User accuracy	90.12	92.06	93.83	91.77	93.54	96.09
	Producer accuracy	86.00	88.34	90.37	93.67	95.10	92.55
	Class kappa	0.88	0.91	0.90	0.93	0.92	0.96
	Overall accuracy	93.28					
	Overall Kappa	0.92					
1985	User accuracy	91.51	88.54	93.50	96.11	95.93	93.66
	Producer accuracy	93.27	89.30	94.98	91.09	93.43	94.03
	Class kappa	0.91	0.89	0.95	0.87	0.94	0.92
	Overall accuracy	95.73					

	Overall Kappa	0.91					
--	---------------	------	--	--	--	--	--

275

276

277 3.5 Change detection between 1985 and 2016 classification

278 The change matrix shows that between 1985 and 2016, 3001.7 ha of the closed forest (CF) was
 279 converted to open forest (OF), 872.4 ha of the closed forest to shrub lands and bushes (SB),
 280 797.4 of the closed forest as grasslands (G) 559.5 ha of the closed forest as farmlands (F) and
 281 368.1 ha of the closed forest as water bodies (WB)(Table 2).

282 **Table 2. Changes in the land use features between 1985 and 2016**

	CF	OF	SB	G	F	WB	Total	PA (%)
CF	4553.9	3001.7	872.4	797.4	559.5	368.1	10153.0	44.9
OF	1548.8	2129.6	1253.4	994.6	664.4	154.0	6744.8	31.6
SB	555.1	1252.5	1129.4	1204.7	893.9	110.8	5146.4	21.9
G	241.1	701.7	952.6	1687.0	4290.2	18.0	7890.6	21.4
F	382.9	977.0	1079.9	1887.1	2441.5	55.2	6823.7	35.8
WB	50.7	12.2	5.1	0.8	0.6	1161.5	1231.0	94.4
Total	7332.5	8074.7	5292.8	6571.6	8850.1	1867.6	37989.5	
CA%	62.2	26.4	21.3	25.7	27.6	62.2	36.6	

283 *Closed forest (CF); Open forest (OF); Shrub and bushes (SB); Grassland (G); Farmland (F);*
 284 *Water bodies (WB) and Cumulative accuracy (CA)*

285

286 Accuracy assessment is important for maps generated from remotely sensed data. An
 287 error matrix is a common way to present an accuracy assessment of the classification. Overall
 288 accuracy, user's and producer's inaccuracies and the Kappa statistic were then derived from the
 289 error matrices. The Kappa statistic incorporates the diagonal elements (Table 3) of the error
 290 matrices and represents agreement obtained after removing the proportion of agreement that
 291 occurred by chance.

292

293 **Table 3: Product Matrix for Calculating Cohen's Kappa Coefficient**

	CF	OF	SB	G	F	WB
CF	74446669	81983444	53738002	66720947	89855573	18962352
OF	49455965	54462750	35698907	44323659	59692315	12596956
SB	37735802	41556070	27238916	33819759	45546324	9611707
G	57857593	63714936	4.18E+09	51853407	69832905	14736939
F	50034571	55099932	36116563	44842220	60390680	12744333
WB	9026430	9940240	6515567	8089709	10894712	2299127

294

295 Production matrix = 74446669 + 54462750 + 27238916 + 51853407 + 60390680.1 + 2299126.81
 296 = 270691548.4

297 Cumulative sum = 5578819132

298 Production matrix/Cumulative sum = 270691548.4/ 5578819132

299 = 0.049

300 Kappa coefficient = (Observed - Expected) / (1 - Expected)

301 $= (0.345 - 0.049) / (1 - 0.049)$
302 $= 0.296/0.951$
303 $= 31.1\%$
304

305 The result of Cohen's Kappa coefficient indicates that nearly 31% of the results of the
306 satellite images obtained were better than would have been obtained by chance.
307 A reduction in tree cover of the catchment area of the Tono Reservoir was an indication of
308 human activity around the reservoir. A representative of the Ministry of Food and Agriculture
309 indicated that:

310 *Water Resources Commission requires that farmers must farm 50 m away from the banks*
311 *of water bodies. However, many farmers in the Upper East Region rather farm close to*
312 *the river banks.*

313 The implication is that the soil is loosened and eroded and washed into the reservoir. To reduce
314 runoff and erosion of sediments into the reservoirs, farmers and community members are
315 encouraged to plant trees along river banks. Trees are also planted to reduce grass cover which
316 fuel wildfires in the Upper East Region. The people are also being discouraged from logging
317 trees. An official from the Department of Game and Wildlife in Bolgatanga reported that:

318 *Community cooperation and education were important in the sustainable management of*
319 *natural resources. Education is necessary to foster understanding between the*
320 *Department of Game and Wildlife, Forest Commission, Water Resources Commission*
321 *and the community members. However, understanding does not ensure cooperation since*
322 *they may not show any interest. For example, Mr. Moses Gambila, a former Member of*
323 *Parliament for Nabdam in the Upper East Region, was quoted by Mr. Gabriel Donkor*
324 *(16th May 2017) to have reported on the floor of parliament that, the Forest Commission*
325 *of Ghana should release forest reserves in his constituency for his people to farm because*
326 *his people were poor and suffering.*

327 A Game and Wildlife Division representative reported that, the department was
328 partnering with community members to pilot the Community Resource Management Area
329 (CREMA) concept along the Sisili River. This is a management strategy to prevent siltation of
330 the river and which is spear headed by community members.

331 An official of the Forestry Commission said "an enrichment planting strategy is being
332 considered to improve soil fertility". This is enriching the soils in degraded lands and then
333 planting trees thereafter. *Senna siamea*, for example, thrives very well in degraded lands and
334 farmers are encouraged to plant them on degraded lands. Farmers are also encouraged to do
335 replacement planting. In this practice, the trees that were cut down, especially in closed forested
336 areas, are being replaced. This policy needs to be enforced and community members must be
337 motivated to replace cut trees.

338 Deforestation and bush burning which is prevalent in the Upper East Region expose the
339 land surface and hasten soil erosion. The demand for food also resulted in a reduction in closed
340 forests and an increase in farmlands due to increasing population and economic benefits as
341 indicated by [39]. [40] in their study of environmental degradation in northern Ghana also
342 concluded that the forest cover protects the watershed from wind and rain erosion and also holds
343 the soil firmly together. The removal of vegetation from some portions of the watershed,
344 therefore, resulted in the transportation of debris and soil particles into the reservoir. An

345 accumulated effect is an increase in the surface area of water bodies. The reduction in the closed
346 forest was also partly due to the perennial burning of the Upper East Region, a characteristic of
347 the Savannah Zone, due to drought and windy weather conditions [41].

348

349 **4. Conclusions and Recommendations**

350 It is concluded that the water level of the Tono reservoir was reduced by 8.2% per
351 decade due to the reduced rainfall (-4.4% per decade) pattern and increasing maximum
352 temperature (3.03% per decade) as a result of land use change. The study also concludes that
353 between 1985 and 2016, 3001.7 ha of the closed forest was converted to open forest, 872.4 ha of
354 the closed forest to shrublands and bushes, 797.4 of the closed forest as grasslands 559.5 ha of
355 the closed forest as farmlands and 368.1 ha of the closed forest as water bodies. The decrease in
356 the closed forest and grasslands were partly due to the conversion of forested lands and
357 grasslands into farmlands as a result of bush burning and deforestation. These changes are
358 contrary to the objectives of the sustainable development goals (SDGs) especially Goal 11
359 (sustainable cities) which calls for preservation of the natural vegetation in city's physical
360 landscape to enhance the quality of life of urban dwellers.

361 It is recommended that minimization of human activities such as deforestation, bush
362 burning and farming along river banks could reduce erosion and siltation rates, and also decrease
363 the evaporation rate of surface water in the Upper East Region. Cooperation and ownership of
364 natural resources by community members and the government are necessary for the
365 sustainability of forest ecosystems. Land use and land cover management should be a collective
366 effort, between the Department of Town and Country Planning, Forestry Commission, Water
367 Resources Commission, Ministry of Food and Agriculture and community leaders. Community
368 members must also be given legislative support to protect and use plants on their lands. This
369 study could not look at the collaboration, coordination and cooperation of the relevant
370 stakeholders who are mandated to protect the Tono dam and the preservation of natural
371 resources in the Upper East Region.

372

373

374 **References**

375

- 376 1. Sarfo, I., Shuoben, B., Beibei, L. (2022). Spatiotemporal development of land use systems,
377 influences and climate variability in Southwestern Ghana (1970–2020). *Environ Dev Sustain* 24,
378 9851–9883 (2022). <https://doi.org/10.1007/s10668-021-01848-5>
- 379 2. Abbam, T., Johnson, F. A., Dash, J., & Padmadas, S. S. (2018). Spatiotemporal variations in
380 rainfall and temperature in Ghana over the twentieth century, 1900–2014. *Earth and Space*
381 *Science*, 5, 120–132. <https://doi.org/10.1002/2017EA000327>
- 382 3. Ayten E & Randhir T. O. (2012). Climatic change impacts on the ecohydrology of
383 Mediterranean watersheds Climatic Change (2012); Springer Science and Business Media B.V.
384 2012 114:Pp.319–341

- 385 4. Sarfo, I., Bi, S., Kwang, C. (2023). Class dynamics and relationship between land-use systems
386 and surface temperature in south-eastern Ghana. *Environ Earth Sci* 82, 104 (2023).
387 <https://doi.org/10.1007/s12665-023-10755-z>
- 388 5. Barakat, A., Ouargaf, Z., Khellouk, R., et al. (2019). Land use/land cover change and
389 environmental impact assessment in Béni-Mellal District (Morocco) using remote sensing and
390 GIS. *Earth Systems and Environment*, 3, 113–125. <https://doi.org/10.1007/s41748-019-00088-y>
- 391 6. Pan, W., Carr, D., Barbierri, A., Bilsborrow, R., and Suchindran, C. (2007). “Forest Clearing
392 in the Ecuadorian Amazon: A study of Patterns Over Space and Time”. *Population Research and*
393 *Policy Review* 26: 635-659.
- 394 7. Damnyag, L., Oduro, A. K., Obiri, D. B., Mohammed, Y., Bampoh, A. A. (2017). Assessment
395 of drivers of deforestation and forest degradation in Bia-West-Juabeso landscape,
396 Ghana. *Ministry of Food & Agriculture (MOFA)*, 2017. Unpublished report.
- 397 8. Koranteng, A., & Zawila-Niedzwiecki, T. (2016). Forest loss and other dynamic use changes
398 in Western Region of Ghana. *Journal of Environment Protection and Sustainable*
399 *Development*, 2(2), 7–16.
- 400 9. FAO (2010). The State of Food and Agriculture 2010-2011. Women in Agriculture Closing
401 the Gender Gap for Development . Rome: FAO.
- 402 10. Mattah, P. A. D., Futagabi, G., & Mattah, M. M. (2018). Awareness of environmental change,
403 climate variability, and their role in prevalence of mosquitoes among Urban Dwellers in
404 Southern Ghana. *Journal of Environmental and Public*
405 *Health*. <https://doi.org/10.1155/2018/5342624>
- 406 11. Nickerson, C., Ebel R., Borchers, A., Carriazo, F. (2011). Major Land Uses in the United
407 States. *Economic Reseach Service*, Economic Information Bulletin 89, US Department of
408 Agriculture, Washington, DC.
- 409 12. FAO (2009). ‘The State of Food and Agriculture’. *Food and Agriculture Organization of the*
410 *United Nations*. Rome: FAO.
- 411 13Mensah, C. A., Eshun, J. K., Asamoah, Y., & Ofori, E. (2019). Changing land use/cover of
412 Ghana’s oil city (Sekondi-Takoradi Metropolis): Implications for sustainable urban
413 development. *International Journal of Urban Sustainable Development*, 11(2), 223–
414 233. <https://doi.org/10.1080/19463138.2019.1615492>
- 415 14 Mensah, A. A., Sarfo, A. D., & Partey, S. T. (2018). Assessment of vegetation dynamics using
416 remote sensing and GIS: A case of Bosomtwe range forest reserve, Ghana. *The Egyptian Journal*
417 *of Remote Sensing and Space Sciences*. <https://doi.org/10.1016/j.ejrs.2018.04.004>
- 418 15. Lubowski, R. N., Vesterby, M., Bucholtz, S., Baez, A. and Roberts, M. J. (2006). Major uses of
419 land in the United States, 2002. *Economic Bulletin* No. (EIB-14)

- 420 16. Sarfo, I., Bortey, O., & Terney Kumara, T. (2019). Effectiveness of adaptation strategies
421 among coastal communities in Ghana: The case of Dansoman in the Greater Accra
422 region. *Current Journal of Applied Science and Technology*, 35(6), 1–
423 12. <https://doi.org/10.9734/cjast/2019/v35i630211>
- 424 17. Singh, M. P., Bhojvaid, P. P., de Jong, Wil, Ashraf, J., & Reddy, S. R. (2017). Forest
425 transition and socio-economic development in India and their implications for forest transition
426 theory. *Forest Policy and Economics, Elsevier*, 76(C), 65–
427 71. <https://doi.org/10.1016/j.forpol.2015.10.013>
- 428 18. Sodango, T. H., Sha, J., & Xiaomei, L. (2017). Land use/land cover change (LULCC) in
429 China, review of studies. *International Journal of Scientific and Engineering Research*, 8(8), 943.
- 430 19. Chakravarty, S., Shukla, G., Malla, S., and Suresh, C. P. (2008). Farmers rights in conserving
431 plant biodiversity with special reference to north east India. *Journal of Interlectual Property Rights*,
432 13: 225-233.
- 433 20. Issahaku A., Champion, B. B. and Edziyie R. (2016). Rainfall and Temperature Changes and
434 Variability in the Upper East Region. *Journal of Earth Space and Science*. 3 (8): 284-294.
- 435 21. Ullah, M., Li, J., & Wadood, B. (2020). Analysis of urban expansion and its impacts on Land
436 surface temperature and vegetation using RS and GIS, A case study in Xi'an City, China. *Earth*
437 *Systems and Environment*, 4, 583–597. <https://doi.org/10.1007/s41748-020-00166-6>
- 438 22. Fianko, J. R., Osaе, S., & Achel, D. (2009). Impact of anthropogenic activities on the Densu
439 River in Ghana. *Water and Environment Journal*, 23(3), 229-234.
- 440 23. Rehman, Z., Khanum, F., & Kazmi, S. J. H. (2016). Evaluation of Land Cover Changes at the
441 Coast of Sindh through Successive Landsat Imageries. *Journal of Earth Science & Climatic*
442 *Change*, 7:325,
- 443 24. Attua, E. M., Ayamga, J., & Pabi, O. (2014). Relating land use and land cover to surface water
444 quality in the Densu River basin, Ghana. *International Journal of River Basin Management*,
445 12(1), 57-68.
- 446 25. Rehman, Z., & Kazmi, S. J. H. (2018). Land Use/Land Cover Changes through Satellite
447 Remote Sensing Approach: A Case Study of Indus Delta, Pakistan. *Pakistan Journal of Scientific*
448 *and Industrial Research Series A: Physical Sciences*, 61(3), 156-163
- 449 26. Aquastat. (2005). Food and Agriculture Organisation's Information system on Water and
450 Agriculture. *Water Report No.29*. Rome: FAO.
- 451 27. Adewumi, A. S. (2013). Analysis of Land Use/Land Cover Pattern along the River Benue
452 Channel in Adamawa State, Nigeria. *Academic Journal of Interdisciplinary Studies*, 2(5), 95-
453 107.
- 454 28. IPCC (2007). Contribution of Working Group II to the Fourth Assessment Report
455 of the Intergovernmental Panel on Climate change. Cambridge University Press, Cambridge.
456 60pp.
- 457 29. McSweeney C., New M., Lizcano G and Lu X. (2010). The UNDP climate variability country
458 profiles. *American Meteorological Society*, 91:157-166.

- 459 30. Vliet, V., Vrejt, J. and Hagen-Zanker, A. (2011). Revising Kappa to account for change
460 models, *Ecological Modelling*, 222: 1367-1375.
- 461 31. Di Gregorio, A. L. and Jansen, J. M. (2005). Land cover classification system classification
462 concepts and user manual software version 2. Food and Agriculture Organization of the United
463 Nations, Rome.
- 464 32. Abineh, T. and Bogale, T. (2015). Accuracy Assessment of land use and land cover
465 classification using google earth. *American journal of environmental protection*. 4: 193-198.
- 466 33. Rahman, A., Kumar, S., Faal, S. and Siddique, M. A. (2012). Assessment of land use and
467 land cover change in the North-west District of Delhi using remote sensing and GIS techniques.
468 *Journal of the Indian society of remote sensing*, 40: 689-697
- 469 34. El-Khoury, A.(2015).Combined impacts of future climate and land use changes on discharge,
470 nitrogen and phosphorus loads for a Canadian river basin. *Journal Environmental Management*,
471 151, 76–86. doi:10.1016/j.jenvman.2014.12.012
- 472 35. Rehman, Z. U., Mahar, G., Chandio, N., Iqbal, M., &Kazmi, J. (2019). Appraisal of Land
473 Cover Changes in the Upper Sindh Through Geo-Informatics Techniques. *Sindh University*
474 *Research Journal-SURJ (Science Series)*, 51(01), 141-146.
- 475 36. Kleemann, J., Inkoom, N. J., Thiel, M., Shankar, S., Lautenbach, S., & Fürst, C. (2017). Peri-
476 urban land use pattern and its relation to land use planning in Ghana West Africa. *Landscape and*
477 *Urban Planning*, 165(2017), 280–294. <https://doi.org/10.1016/j.landurbplan.2017.02.004>
- 478 37. Doe, E. K., Aikins, B. E., Njomaba, E., & Owusu, A. B. (2018). Land use land cover change
479 within Kakum conservation area in the Assin South District of Ghana, 1991–2015. *West African*
480 *Journal of Applied Ecology*, 27(SI), 85–97.
- 481 38. United Nations. 2015. Transforming our world: the 2030 agenda for sustainable
482 development. New York (NY):United Nations. [Google Scholar]
- 483 39. Rubin, N. and Warren, W. M. (2014). Dams in Africa: An inter-disciplinary study of man-
484 made lakes in Africa, Routledge
- 485 40. Tigrek, S. and Aras, T. (2011). Reservoir sediment management. CRC Press
- 486 41. Ghana Statistical Service (2020). Population and Housing Census: District Census Analytical
487 Report
- 488