

A RARE CASE OF MIXED ADENONEUROENDOCRINE (MiNEN) CARCINOMA OF THE GALL BLADDER

Abstract

Mixed neuroendocrine non-neuroendocrine neoplasm (MiNEN) of the gall bladder is an extremely rare neoplasm of the gall bladder. We present a case of a 71 year old female who came to our clinic with an incidental gall bladder mass and subsequently underwent laparoscopic radical cholecystectomy with liver cuff resection. Histology findings showed moderately differentiated carcinomatous component mixed with poorly differentiated large cell neuroendocrine carcinoma invading into muscular layer with clear resection margin (pT1bN0). Post operatively, she refused for adjuvant therapy and unfortunately at 4 months after surgery she developed metastasis at the segment 5 of liver. In conclusion, GB-MiNEN is an extremely rare and aggressive tumour of the gall bladder and surgery with adjuvant chemotherapy combined with somatostatin analogue may offer a better survival outcome.

Keyword: Mixed non-neuroendocrine neuroendocrine neoplasm. Gallbladder cancer. Liver metastasis.

Introduction

Neoplasm of the gall bladder is rare and accounts for 1.2% of all global cancer diagnoses with papillary adenocarcinoma being the commonest type (98%) while neuroendocrine tumours only account for 0.5%. Mixed neuroendocrine non-neuroendocrine neoplasm (MiNEN) is extremely rare and defined as association of at least 2 morphologically different neoplastic components with at least 30% each including the neuroendocrine component. (1,7,10) We hereby report a case of MiNEN of the gall bladder who presented with an incidental gall bladder mass.

Case summary

71-year-old female initially presented to our surgical clinic for an incidental finding of a gall bladder mass on abdominal ultrasound. Clinically, she was well with no jaundice while abdominal examination was unremarkable with no mass palpable. The serum Ca 19.9 taken was elevated at 48mg/L and a contrast-enhanced CT abdomen done showed an heterogeneously enhancing irregular intraluminal mass (3 x 3.2 x 4.4cm) at the fundus of the gall bladder. Endoscopic ultrasound (EUS) assessment showed gall bladder mass confined within with no extraluminal extension. Subsequent PET-CT scan showed a hypermetabolic enhancing mass in the gall bladder with no evidence of regional or distant metastasis.

Patient underwent laparoscopic cholecystectomy with liver cuff resection and porta hepatis lymph nodes clearance. Intraoperatively, there was a 3 x 3 cm mass at the fundus of gall

bladder with intraoperative ultrasound confirmation of an intact gall bladder wall. There was no liver or peritoneal nodule seen. Patient recovered well post-surgery and was discharged well at day 5 post surgery.

The final histopathological report showed mixed adenoneuroendocrine carcinoma of the gall bladder with a moderately differentiated adenocarcinoma mixed with poorly differentiated large cell neuroendocrine carcinoma with clear margins. In addition, the 6 porta hepatis lymph nodes were all negative with a staging of pT1bN0.

Patient refused for adjuvant chemotherapy and was on our clinic follow up for surveillance. The serum Ca 19.9 remained elevated at 45 at 4 months post surgery and a repeated CT TAP showed possible segment 5 liver metastasis. She was started on chemotherapy and for reassessment PET scan in 6 months' time.

Discussion

Gall bladder cancer is considered an uncommon cancer and ranked 22nd most incident cancer with a disproportionately high cancer related death due to its difficulty in screening and early diagnosis. (10, 11) Patients were often diagnosed in advanced stage or with metastatic disease with as high as 40% of them being diagnosed late resulting in an average of only 18% of 5 year survival rate. (12, 13) The commonest type is papillary adenocarcinoma accounts for 98% of all gall bladder cancer. Neuroendocrine carcinoma(NEC) is a rare tumour which account for less than 1% of all malignant tumours with majority are still found in the gastrointestinal tracts especially in the rectum, jejunum-ileum and pancreas. (15). NEC of the gall bladder is extremely rare (0.2% of all gastrointestinal NEC) due to absence of neuroendocrine cells in the gall bladder. However, this type of malignancy is usually highly aggressive with high risk for metastasis and commonly presenting at late stages.

Based on the 2019 WHO classification of tumours of digestive system, mixed neuroendocrine-non-neuroendocrine neoplasm (MiNEN) as the name suggest is a tumour composed of at least 2 morphologically different neoplastic component with at least 30% each, including 1 neuroendocrine component. (5, 7) The postulated pathogenesis is due to biphenotypic differentiation of both components during carcinogenesis secondary to chronic inflammation of gall bladder with gall stone being the commonest risk factor. (6) La Rosa et al has classified MiNEN into low, intermediate and high grade based on the combination of both components in the tumour. High grade MiNEN is a combination of carcinoma or adenoma with poorly differentiated neuroendocrine carcinoma (PDNEC) (G3) of small or large cell type, which is present in our patient. (14) It has a reported median overall survival of 12.2 months which is slightly better than pure PDNEC (9.6 months). (7,8,9,16) Several studies have shown the behaviour of MiNEN is mainly driven by the neuroendocrine component which is commonly poorly differentiated (90%) and often present in the distant metastatic sites; therefore systemic agent of choice is usually targeting against the NEC component. (6) For non-metastatic MiNEN, treatment should includes curative surgery, in this case a radical cholecystectomy with liver cuff resection and portal node clearance, followed by adjuvant treatment targeting the more aggressive NEC component. Some case report recommended the use of long acting somatostatin analogue which was used for high grade NET (2); however the data on somatostatin receptor 2 (SSTR2) expression is still very

limited to support the benefit of this treatment modality. (7) Due to the rarity of gall bladder MiNEN, there is still lacking of data on the survival outcomes. Despite our patient being diagnosed and managed early with radical surgery, she developed liver metastasis 4 months after surgery and was referred to our oncology unit for systemic therapy.

UNDER PEER REVIEW

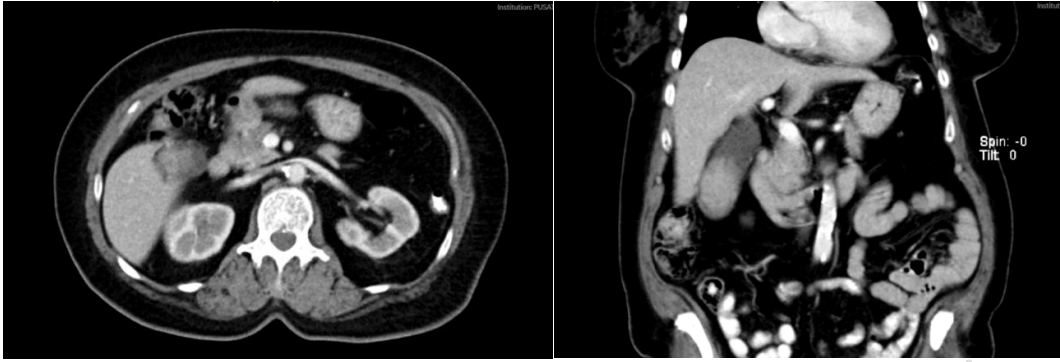


Figure 1 and 2 showed the axial and coronal view of CT images of the gall bladder mass which is heterogeneously enhancing with irregular margin at its fundus

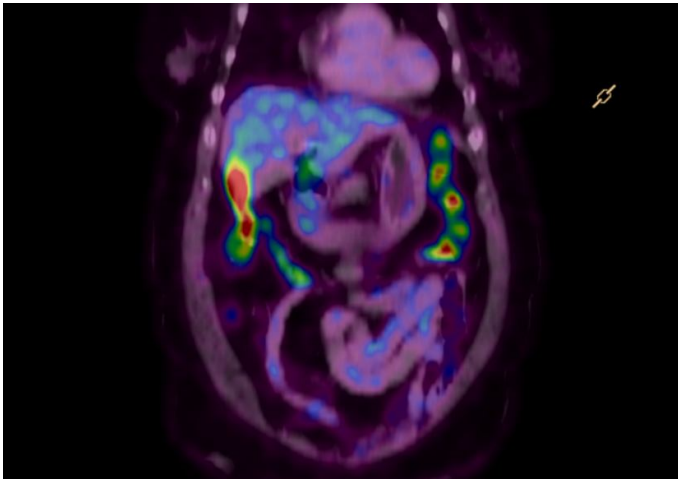


Figure 3 shows PET CT image of gall bladder mass



Figure 4 showed endoscopic ultrasound image of the gall bladder mass confined within the gall bladder





Figure 5 and 6 showing images of the specimen of gall bladder resected

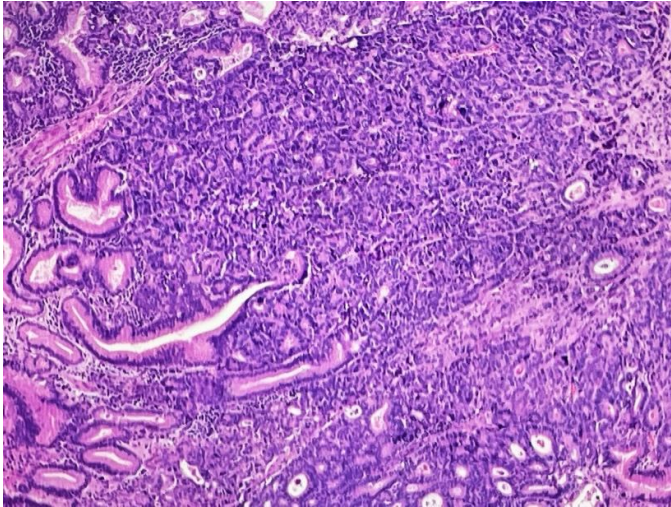


Figure 7 show admixtures of carcinomatous components (on the left) and large cell neuroendocrine component (on the right)

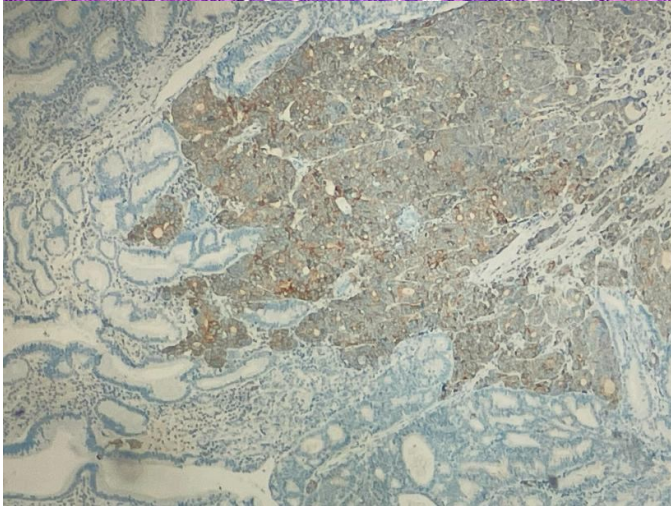


Figure 8 shows neoplastic cells in neuroendocrine component are positive for synaptophysin (brown stained) and the carcinomatous component are immunonegative

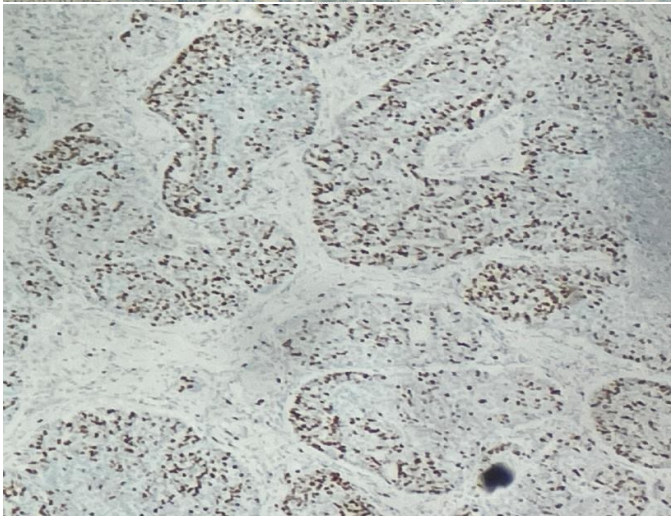


Figure 9 show proliferative index, Ki-67 is about 50-60% in neuroendocrine component

Conclusion

In conclusion, gall bladder cancers are still commonly being diagnosed late due to its nature of asymptomatic disease and often found in late stage of disease. MiNEN of gall bladder is a rare but highly aggressive cancer of the gall bladder with poor survival outcome. Due to its rarity, there is still lacking of evidence in the treatment guideline of managing this subtype of malignancy. Therefore, more cases and studies are required with longer follow up in order to establish standardized treatment guidelines.

References

1. Costa AC, Cavalcanti CLC, Coelho HGB, Leão LHA, Soares DTC, Santa-Cruz F, Paz AR, Ferraz ÁAB. Rare Mixed Adenoneuroendocrine Carcinoma of the Gallbladder: Case Report and Review of Literature. *Am J Case Rep.* 2021 May 4;22:e929511. doi: 10.12659/AJCR.929511. PMID: 33945521; PMCID: PMC8105744.
2. Zhang Z, Zhong D, Feng T, Yao Y, Huang X. Mixed Adenoneuroendocrine Carcinoma of the Gallbladder. *J Gastrointest Surg.* 2022 Feb;26(2):503-506. doi: 10.1007/s11605-021-05139-2. Epub 2021 Oct 19. PMID: 34668162.
3. Kadota Y, Funakoshi S, Hirose S, Shiomi E, Odaira M, Yagishita H, Kobayashi Y, Toriumi F, Tamai S, Endo T, Harada H. Focal neuroendocrine carcinoma mixed with adenocarcinoma of the gallbladder with aggressive lymph node metastasis in a patient who did not meet the mixed neuroendocrine-non-neuroendocrine neoplasm criteria. *Clin J Gastroenterol.* 2022 Feb;15(1):185-191. doi: 10.1007/s12328-021-01547-8. Epub 2021 Nov 12. PMID: 34767241; PMCID: PMC8858271.
4. Chen C, Wang L, Liu X, Zhang G, Zhao Y, Geng Z. Gallbladder neuroendocrine carcinoma: report of 10 cases and comparison of clinicopathologic features with gallbladder adenocarcinoma. *Int J Clin Exp Pathol.* 2015 Jul 1;8(7):8218-26. PMID: 26339390; PMCID: PMC4555718.
5. Ishikawa T, Nakano K, Osaka M, Aratani K, Yayoi K, Akioka K, Tsuchiya K, Hosokawa Y. Mixed neuroendocrine-non-neuroendocrine neoplasms of the gallbladder: a case report. *Surg Case Rep.* 2021 Mar 17;7(1):70. doi: 10.1186/s40792-021-01152-4. PMID: 33730263; PMCID: PMC7969674.
6. Frizziero M, Chakrabarty B, Nagy B, Lamarca A, Hubner RA, Valle JW, McNamara MG. Mixed Neuroendocrine Non-Neuroendocrine Neoplasms: A Systematic Review of a Controversial and Underestimated Diagnosis. *J Clin Med.* 2020 Jan 19;9(1):273. doi: 10.3390/jcm9010273. PMID: 31963850; PMCID: PMC7019410.
7. de Mestier L, Cros J, Neuzillet C, Hentic O, Egal A, Muller N, Bouché O, Cadiot G, Ruzniewski P, Couvelard A, Hammel P. Digestive System Mixed Neuroendocrine-Non-Neuroendocrine Neoplasms. *Neuroendocrinology.* 2017;105(4):412-425. doi: 10.1159/000475527. Epub 2017 Aug 12. PMID: 28803232.

8. Kim J, Lee WJ, Lee SH, Lee KB, Ryu JK, Kim YT, Kim SW, Yoon YB, Hwang JH, Han HS, Woo SM, Park SJ. Clinical features of 20 patients with curatively resected biliary neuroendocrine tumours. *Dig Liver Dis*. 2011 Dec;43(12):965-70. doi: 10.1016/j.dld.2011.07.010. PMID: 21856258.
9. Harada K, Sato Y, Ikeda H, Maylee H, Igarashi S, Okamura A, Masuda S, Nakanuma Y. Clinicopathologic study of mixed adenoneuroendocrine carcinomas of hepatobiliary organs. *Virchows Arch*. 2012 Mar;460(3):281-9. doi: 10.1007/s00428-012-1212-4. Epub 2012 Feb 23. PMID: 22358181.
10. Bray F, Ferlay J, Soerjomataram I, Siegel RL, Torre LA, Jemal A. Global cancer statistics 2018: GLOBOCAN estimates of incidence and mortality worldwide for 36 cancers in 185 countries. *CA Cancer J Clin*. 2018 Nov;68(6):394-424. doi: 10.3322/caac.21492. Epub 2018 Sep 12. Erratum in: *CA Cancer J Clin*. 2020 Jul;70(4):313. PMID: 30207593.
11. Ferlay J, Ervik M, Lam F, et al. Global cancer observatory: cancer today. International Agency for Research on Cancer, Lyon, France. Available from: <https://gco.iarc.fr/today>. Accessed 20 December 2018.
12. Henley SJ, Weir HK, Jim MA, Watson M, Richardson LC. Gallbladder Cancer Incidence and Mortality, United States 1999-2011. *Cancer Epidemiol Biomarkers Prev*. 2015 Sep;24(9):1319-26. doi: 10.1158/1055-9965.EPI-15-0199. Epub 2015 Jun 12. PMID: 26070529.
13. SEER Explorer: An interactive website for SEER cancer statistics [Internet]. Surveillance Research Program, National Cancer Institute. Available from <https://seer.cancer.gov/explorer/>. Accessed December 20 2018.
14. La Rosa S, Sessa F, Uccella S. Mixed Neuroendocrine-Nonneuroendocrine Neoplasms (MiNENs): Unifying the Concept of a Heterogeneous Group of Neoplasms. *Endocr Pathol*. 2016 Dec;27(4):284-311. doi: 10.1007/s12022-016-9432-9. PMID: 27169712.
15. Rothenstein J, Cleary SP, Pond GR, Dale D, Gallinger S, Moore MJ, Brierley J, Siu LL. Neuroendocrine tumors of the gastrointestinal tract: a decade of experience at the Princess Margaret Hospital. *Am J Clin Oncol*. 2008 Feb;31(1):64-70. doi: 10.1097/COC.0b013e31807a2f49. PMID: 18376230.
16. Oberg K. Diagnostic work-up of gastroenteropancreatic neuroendocrine tumors. *Clinics (Sao Paulo)*. 2012;67 Suppl 1(Suppl 1):109-12. doi: 10.6061/clinics/2012(sup01)18. PMID: 22584714; PMCID: PMC3328823.