

Original Research Article

EVALUATION OF GROWTH AND POLLEN VIABILITY (FERTILITY) IN RELATION TO FRUIT SET AMONG FIVE VARIETIES OF TOMATO

ABSTRACT

The evaluation of pollen viability and fruit setting capacity are two essential criteria for pollinator's characterization. This study was carried out to evaluate pollen fertility/ viability in five varieties of tomatoes. We analyzed the viability of pollen grains of five different varieties of tomatoes grown in ITM University, Gwalior, MP. Aceto-carminine method was used to estimate pollen viability. The germination percentage, pollen viability and fruit setting rate were recorded at different stages. Results displayed that the highest pollen viability rate (100%) was obtained in SWEAKAR-448 variety followed by ArkaVikas (95%), ARJUN-135 (93%), 9005-SIRI (90%) and PKM-1 (80%). The highest percentage of germination (95%) and maximum fruit setting (15-20 fruits per plant) were recorded respectively. In addition, it was found that a noticeable variation in vegetative growth and relationships between plant growth parameters and fruit parameters. Pollen viability/fertility, on the other hand, was not proportional to fruit setting percentage. Pollen viability was directly linked to fruit set, whereas formation and fruit set were not in the studied tomato cultivars. Pollen viability was high, which was accompanied through a reduction in the number of fruit sets, fruit size, pollen viability in the field is highly variable, indicating that differences in microenvironment may have a profound effect on pollen viability.

KEY WORDS: Pollen Fertility/Viability, Aceto- carmine test, Germination Rate, Fruit setting

Introduction

One of the most significant vegetable crops in the world is the tomato (*Lycopersicon esculentum* L.), a plant belonging to the Solanaceae family. Tomato crop is farmed in practically every part of the world, including tropical, sub-tropical, and temperate climates. The tomatoes need a constant temperature of 12-24°C. Loamy soil, which is 6.0 -7.0 in pH, is ideal for the growth of tomatoes. Moreover, they grow best in a soil that is well-drained and loosely packed. These plants require a minimum of 6-8 hours of direct sunlight to grow well. Tomato is one of the most important "protective foods" because of its special nutritive value. It is rich in fiber and low in calories, supplying vitamins and minerals. Tomato fruit contain vitamins like 'A' and 'C' and antioxidant in abundance quantity. Due to the unique properties contained in its fruit, tomato this tomato sometimes is rightly referred to as poor man's orange.

The pollen grains of tomato have a highly specialized cell type that grows within the anthers of the flower through a complicated sequence of events, is the mature male gametophyte (micro gametophyte). Through pollen, plants deliver genetic material and expand genetic diversity by producing recombinant progeny in the subsequent generation (Deveshwaret al., 2011). Pollen fertility in flowering plants depends on proper cellular differentiation in anthers. In tomatoes the pollen shed normally occurs from morning to late afternoon, with midday being the ideal time for release and transfer. Tomatoes are self-pollinating plants that have the perfect flowers. This makes pollination easy. Despite taking extra precautions during pollination, breeders are unable to produce fertile seed when artificial pollination is used. Unless sterility is the primary cause, seed failure can be caused by the pollen tube's sluggish growth or early degeneration in the style. To determine pollen viability, a variety of approaches are available, and the method chosen is dependent on the crop species (Hanna and Towill, 1995). The ability of pollen to mature, germinate, and transfer male gametes to the embryo sac is referred to as pollen viability. The vitality of pollen is what determines its quality. Before pollen granules lose their vitality, they must reach the stigma to complete the fertilization. The duration of viability varies by species and is influenced by temperature and humidity. Two colorimetric tests, i.e., 2, 3, 5 triphenyl tetrazolium chlorides (TTC) and Acetocarmine test were used to determine pollen viability. Where, the colorant is added to pollen and observed under a microscope are the two ways. Acetocarmine test is one of the most well-known pollen stain processes. Acetocarmine stains the nuclei of pollen grains and slightly stains the cytoplasm, resulting in a good contrast between the grain and the surrounding medium. Any nuclear asymmetry is easily observable. On a microscope slide, fresh pollen (or anther loculi or germinated grains) is spread and they are suspended in a drop of aceto carmine for aceto carmine staining process, heated over a spirit flame, squished, and evaluated after 15-30 minutes. Slides can be constructed that are both permanent and semi-permanent. The level of staining was used to rate the pollen

Comment [OP1]: Other results, as fruit size and fruit production could be included
Improve the abstract

Comment [OP2]: Improve sentence, what do you mean by respectively?

Comment [OP3]: Cultivars or varieties????

Comment [OP4]: The accepted name is *Lycopersicon esculentum* Mill.
Reference:
<http://www.theplantlist.org/tpl1.1/search?q=Lycopersicon+esculentum+>
Name

Comment [OP5]: This is not included in the final list of references

Comment [OP6]: Not included in the final list of references

Comment [OP7]: Sentence should be moved to Methods? Rephrase in case you mean to keep the text here

Comment [OP8]: Improve sentence, not understandable

viability (pollen with bold red color as viable and colorless as nonviable). The percentage of pollen viability was determined as the ratio of the number of viable grains to the total grains number.

Materials and Methods

The present experiment was conducted at Crop Research Center, Department of Genetics and Plant Breeding, School of Agriculture, ITM University, Gwalior, Madhya Pradesh in *Rabi* Season (2021-2022). The five different varieties of tomato used in the experiment are 9005-SIRI (Hybrid), ArkaVikas (Variety), ARJUN-135 (Hybrid), PKM-1 (Variety) and SWEAKAR-448 (Hybrid). During the tomato growth the average monthly temperature ranges from 21°C to 26°C and the relative humidity ranged between 55 and 82 per cent. In a year average rainfall is noted as 910mm. Generally in December and January the temperature ranges from 14 - 20°C. The experimental blocks soil is a well fertile sandy loam soil with pH values ranging from 4.8 to 5.3. The ~~given~~ field was well drained, with proper irrigation.

Planting the seeds involves sowing the seed into five different trays to obtain the seedlings; the trays were filled with a mixture of coco peat and vermicompost with two holes to enhance drainage. The seedlings were transplanted 34 days after sowing. The experiment was laid out in RBD (randomized block design), each plot size was 3m × 7 m, spacing between rows and plants is 60 X 50 cm. Each plot acquired 50 plants. The data recorded during the experiment were on germination and mortality percentage, growth characters of the varieties, floral and fruit characteristics, ~~fruit~~ fruit setting based on pollen viability percentage, and correlation coefficient of growth characters. The varieties were tested for pollen fertility status by using the aceto-carmin staining method. From each variety of tomato 3-5 randomly selected flowers were collected. Flower buds of these varieties were collected from research field and were analyzed for viability, using dissecting forceps, scalpel and a needle. ~~The~~ anthers of five varieties were opened to allow extraction and subsequent transfer of pollen dust ~~on~~ to a microscopic glass slide in a drop of aceto-carmin stain solution and observed under the microscope. Each slide was observed under the 10 X and 40 X objective lens (100 X & 40 X magnification). For each plant, five slides were prepared. The slides ~~were are~~ covered with cover slips which ~~were are~~ gently placed and pressed with the thumb. About 100 pollen grains from each flower bud were observed and percentage pollen viability ~~was is~~ determined.

To determine pollen fertility, deeply stained pollen grains were recorded as fertile and viable, and unstained or very lightly stained ones were considered as sterile or non-viable. Pollen fertility was calculated by dividing the number of viable pollen grains by the total number of pollen grains counted in the region of view on slide and averaging them for all plants in that ~~varieties~~. Pollen viability was expressed as percentage pollen fertility in each tomato plant variety. The data obtained for various parameters evaluated were subjected to Analysis of Variance (ANOVA) and the means were separated at level of significance $P < 0.05$.

Results and Discussion

Among the five tomato varieties germination percentage and mortality percentage ~~was is~~ recorded and from the tenth to the thirty-first day after sowing, seed germination was measured until maximum germination was noticed in seeds. The percentage of germination ranged from 70% (PKM-1) to 95% (9005- SIRI). ~~Whereas,~~ the highest mortality rate after plants transplantation into the field ~~was is~~ shown by the varieties ArkaVikas, ARJUN-135 and PKM-1 as 10% ~~per cent~~ and the lowest mortality rate ~~was is~~ observed by the varieties 9005-SIRI (6%) and SWEAKAR-448 (5%). Table1 shows the comparison between the germination percentage and mortality rate percentage of the five tomato varieties.

Table 1: Percentage of germination and mortality in five varieties of tomato

Variety Name	Germination (%)	Mortality (%)
9005-SIRI	95	6
ArkaVikas	90	10
ARJUN-135	85	10
PKM-1	70	10
SWEAKAR-448	93	5

Comment [OP9]: Move the phrase to Methods

In case you mean to keep the text here, rephrase to be comprehensible as bibliographic reference

Comment [OP10]: How many samples did you consider to calculate the average? As the number of collected plants/flowers varied from 3 to 5, doubt is settled

Low germination percentage and mortality rates in the tomato varieties were caused by the presence of endogenous cyanide or physiologically immature embryo which could have resulted in poor germination. The mortality percentage after the transplantation of plants into the field was ~~is~~ due to the shock and stress that effect rooting and nutrient uptake from which the young plants could not recover.

Comment [OP11]: A reference sustaining this sentence should be presented

At maturity the analysis of quantitative morphological parameters were evaluated (Table 2). The highest plant height was ~~is~~ recorded by the variety PKM1 (55-65 cm), while ARJUN-135 (40-45 cm) had the shortest plants. The plant height mean values ranged from 41 to 57.5 cm. The tomato variety PKM1 had ~~has~~ the highest mean value (57.5) and 9005-SIRI (41) had ~~has~~ the lowest mean value.

Table 2: Magnitude of growth parameters

Variety Name	Plant height (cm)	Branches per plant (number)	Days to Flowering (number)	Flowers per Plant (number)	Fruits per plant (number)
9005-SIRI	41	9.5	67	22.5	7.5
ArkaVikas	44	9.5	63.5	22.5	3.5
ARJUN-135	42	12.5	71	24.5	9.5
PKM-1	57.5	10.5	72	16	4.5
SWEAKAR-448	51.5	15.5	62	27.5	16.5

Comment [OP12]: Anova results should be included in the table. It would be useful to know, for example, if 9005-SIRI number of branches differs from SWEAKAR-448 with statistical significance

In line with the findings of Akindele *et al.*, study of quantitative morphological parameters evaluated at maturity revealed considerable variances (2011). However, in some varieties character differences were not very peculiar from one another. The ARJUN-135 variety developed the shortest plants (55-65 cm), while variety PKM1 developed the tallest plants (40-45cm). The examined variants SWEAKAR-448 and 9005-SIRI have branches in varying numbers, ranging from 15.5 to 9.5 of mean values. This showed increased growth factor production, which promotes vegetative growth. The tendency in the varieties growth patterns is explained by the positive connections between leaf characteristics and plant height (Table 3). Significant relationships between a few of the kinds of vegetative development properties have also been found by quantitative character analysis. A similar result was reported by Nwosuet *et al.* (2014), that significant correlations existed in the vegetative parameters of the tomato varieties studied.

Comment [OP13]: Variety Reference is not in the final list of references

Table 3: Correlation coefficient matrix of quantitative growth characters among five varieties of tomato

	Branches per plant (number)	Flowers per plant (number)	Plant height (cm)	Fruits per plant (number)
Branches per plant	1			
Flowers per plant	0.587*	1		
Plant height	0.258 ^{NS}	-0.448 ^{NS}	1	
Fruits per plant	0.791 ^{**}	0.776 ^{**}	-0.120 ^{NS}	1

Comment [OP14]: What ** means? And what is the meaning of ns? Explanation should be included beneath the table

Table 4 shows the mean values for the fruit characters. The variety SWEAKAR-448 shows highest mean values than other varieties in every character of the fruits *i.e.*, fruits cluster (6), fruit cluster per plant (4.5), average fruit weight (86), average fruit yield per plant (2.2), harvest duration (21). The minimum fruits per cluster (2.5) and lowest fruit cluster per plant (1) were observed in the variety ArkaVikas. The Variety 9005-SIRI showed the minimum fruit weight (21g), lowest average fruit yield per plant (0.75kg) and lowest harvest duration (15.5). This finding is in agreement with earlier reports that different factors are responsible for plant vegetative growth and fruiting in plants (Bertin, 1995; Marcellis *et al.*, 2004).

Comment [OP15]: Not included in the final list of references

Fruit set generally varies from plant to plant, and fruit set percentage ~~or~~ probability can relate better the changes than fruit set number. Additionally, fruitset is a dynamic process that varies depending on the crop's stage of growth, with cyclical abortions being noticed in sweet pepper (Wubset *et al.*, 2009). Early fruiting, high fruit productivity, and marketable fruit size traits should be screened to enable the selection of high-fruit yielding varieties easier with a view to commercial production. As Bernousiet *et al.* (2011) suggested, selection should not be made solely on the basis of vegetative development.

Comment [OP16]: Idem, not included.....

Comment [OP17]: Idem, not included

Table 4: mean values for the fruit characters of five varieties

Name of the Variety	Fruit per cluster (number)	Fruit cluster per plant (number)	Average fruit weight (g)	Average fruit yield per plant (kg)	Harvest duration (number of days???)
9005-SIRI	3.5	3	21	0.75	15.5
ArkaVikas	2.5	1	52	0.8	16.5
ARJUN-135	5.5	4	73.5	1.25	17
PKM-1	4	2	80.5	2.15	19
SWEAKAR-448	6	4.5	86	2.2	21

Comment [OP18]: ANOVA results should be included

Comment [OP19]: It was not explained if harvest duration was days or weeks or something else

Pollen fertility results obtained using the aceto-carmin method and the percentage of fruit set for the varieties are presented in Table 5. Average pollen viability percentage for the variety 9005-SIRI - 90 %, ArkaVikas - 95%, ARJUN-135 - 93%, PKM1 - 80%, SWEAKAR-448 - 100%. Out of the five varieties analyzed for pollen viability, SWEAKAR-448 showed a very higher pollen viability percentage whereas PKM-1 variety displayed the lowest least pollen viability percentage.

Comment [OP20]: The sentence should be removed as repeats the data from the table below

Table 5: percentage of fruit setting according to pollen viability percentage

Name of the Variety	Pollen Viability/Fertility (%)	Fruit setting (%)
9005-SIRI	90	75
ArkaVikas	95	70
ARJUN-135	93	85
PKM-1	80	78
SWEAKAR-448	100	95

Comment [OP21]: Include ANOVA results.....

Pollen grains can be considered viable if they are able to achieve fertilization in a natural setting of fruit. Therefore, analyzing pollen viability would ideally involve analyzing seed set after natural pollination in the field. However, fertilization is not only dependent on pollen viability, but on other factors too, such as pollen dispersal and ovule development in the mother plant. Various methods exist to determine pollen viability that bypass the need for analyzing seed set.

Pollen viability was directly proportional to fruit set among the varieties studied, a number of factors have been described to influence pollen viability and subsequent fruit set in crop plants (Dane *et al.*, 1991; Abdul-Baki, 1992; Suzuki *et al.*, 2001). The most fruit was produced by the variety SWEAKAR-448 that had the most viable pollen. According to Ozores Hampton *et al.* (2012), blossom drop and post-pollination disorder can diminish the flower-fruit set ratio in tomatoes. This investigation supports these findings because there was a significant variation in the ratio of produced fruit to blossoms. The lack of a direct correlation between flower counts and fruit set percentages indicates that tomato fruiting is influenced by a variety of mechanisms and influences. Low fruit set is probably caused by inadequate pollination and poor embryo growth in the variety PKM-1.

Comment [OP22]: Idem, not included

Comment [OP23]: Rephrase to 'The highest fruit production was achieved by the variety ...

Comment [OP24]: Idem, not included

The percentage of tomato genotypes that developed fruit under high-temperature stress dropped, as found by Dane *et al.*, (1991), which significantly reduced pollen viability and favored blossom drop. Similar to this, Sato *et al.*, (2000) and Stephenson have clarified additional elements that influence fruit set (1981). They include the following: stigma, stylar exertions, pollen viability, pollen dehiscence, ovule viability and pollen production. Reduced fruit set and tomato production could be caused by any one of these elements or by a combination of them. The use of pollen viability knowledge as a selection factor for high yield tomato production could therefore provide crucial information for efficient breeding programs, it is worth emphasizing.

Comment [OP25]: A reference to this sentence should be included, why just in the variety PKM-1???

Comment [OP26]: Idem, not included

Comment [OP27]: Idem, not included in the final list

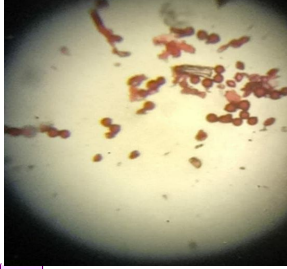


Plate 1. Pollen fertility status of 9005-SIRI

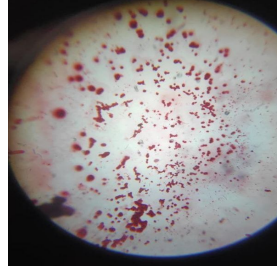


Plate 2. Pollen fertility status of ArkaVikas

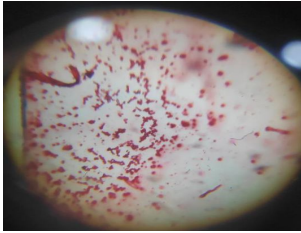


Plate 3. Pollen fertility status of ARJUN-135

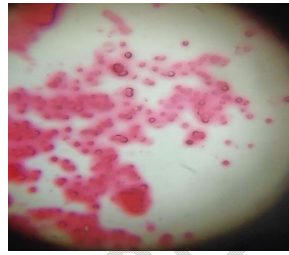


Plate 4. Pollen fertility status of PKM-1

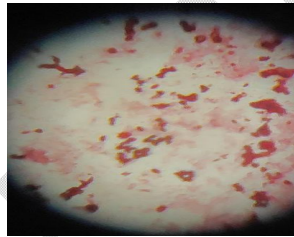


Plate 5. Pollen fertility status of SWEAKAR-448

In this experiment pollen grains were germinated immediately after collection from flowers in the field, without the need to transport the pollen grains to the laboratory; thus, in this case, germination percentages may accurately reflect pollen viability in the field. Pollen viability rates are determined by factors such as water balance, temperature stress and UV-B radiation. The effect of these factors on viability varies with species, and various adaptations that reduce damage can be found in pollen grains. Such adaptations may include the dehydrated state of mature pollen grains. Our results indicate that the pollen viability of the variety SWEAKAR-448 was is higher more than the other 4 studied varieties and the pollen viability of the variety PKM-1 was is the lowest.

Conclusion

The germination percentage was recorded before and after transplanting, whereas pollen fertility and fruit set were recorded at the time of anthesis and physiological maturity, respectively. Results showed that the highest pollen viability rate (100%) was obtained in SWEAKAR-448 variety, followed by ArkaVikas (95%), ARJUN-135 (93%), 9005-SIRI (90%) and PKM-1 (80%). The highest percentage of germination (95%) and maximum fruit setting (15-20 fruits /plant) were recorded respectively. In addition, it is found that pollen viability in the field is highly variable, indicating that differences in microenvironment may have a profound effect on pollen viability (Miller *et al.*, 2021). This is noted that there is a noticeable variation in vegetative growth and relationships between plant growth parameters and fruit parameters. Pollen viability/fertility, on the other hand, was not proportional to fruit setting percentage. Pollen viability was directly linked to fruit set, whereas formation and fruit set were not in the five tomato cultivars that were investigated. Pollen viability was high, which was accompanied through a reduction in the number of fruit sets, fruit size and number of fruits per plant may be influenced by biotic or

Comment [OP28]: Figures should be mentioned in the body text. The presented images were not obtained with the same magnifying glass, which difficult comparisons

Comment [OP29]: Statement should be accompanied with bibliographic reference

Comment [OP30]: The sentence is not complete, rephrase and complete

abiotic factors (Animasaunet *al.*, 2014).

References

1. A member of the cgiar consortium pollen viability assessment international potato center p.o. box 1558, lima 12, peru www.cipotato.org
2. Agrisnet, 2010. Tomato. Department of agriculture, sikkim, india
3. D. A. Animasaun, s. Oyedeji, m. A. Azeez and f. Onyegwukwu (2014) evaluation of growth and pollen viability in relation to fruit set among five varieties of tomato grown in nigeria *issn 0002 original scientific paper publications*.
4. Golan Miller, avital beery, prashantkumarsingh, fengdewang, rotemzelingher, etelnotenko, michallieberman-lazarovich(2021) contrasting processing tomato cultivars unlinked yield and pollen viability under heat stress *bioRxiv preprint* doi:10.1101/2021.04.16.439802 april 16, 2021.
5. Hee-JinJeong, Jin-Ho Kang, Meiai Zhao, Jin-Kyung Kwon, Hak-Soon Choi, Jung Hwan Bae, Hyun-ah Lee, Young-HeeJoung, Doil Choi, Byoung-Cheorl Kang, (2014) Tomato *Male sterile 1035* is essential for pollen development and meiosis in anthers, *Journal of Experimental Botany*, Volume 65, Issue 22, December, Pages 6693–6709, <https://doi.org/10.1093/jxb/eru389>
6. <https://www.sciencegate.app/keyword/37308> pollen viability latest research papers (2022)
7. Jianjun Song, Shoji Tachibana, (2007) Loss of viability of tomato pollen during long-term dry storage is associated with reduced capacity for translating polyamine biosynthetic enzyme genes after rehydration, *Journal of Experimental Botany*, Volume 58, Issue 15-16, December 2007, Pages 4235–4244, <https://doi.org/10.1093/jxb/erm280>
8. Tomato pollen germination vs. Pollen viability amphysays.com

Comment [OP31]:
standardize the citation of references. The last name of the authors must start with a capital letter in reference number 4

Most of the references along the text were not listed in the final list, all should be included
Most of the references included in the final list aren't included in the body text

Comment [OP32]: Not found in the body text

Comment [OP33]: Not found in the body text

Comment [OP34]:

Comment [OP35]: Not found in the body text

Comment [OP36]: Not found in the body text

Comment [OP37]:

The accepted name is *Lycopersicon esculentum* Mill.

Reference: <http://www.theplantlist.org/tpl1.1/search?q=Lycopersicon+esculentum+>

Name	Status	Confidence level	Source	Date supplied
<i>Lycopersicon esculentum</i> Mill.				