

Original Research Article

GIS BASED PLANNING OF FOREST ROAD ALIGNMENT IN PERIYAR TIGER RESERVE, KERALA, INDIA

ABSTRACT

In hilly places, constructing and building forest roads requires a variety of economic and environmental criteria. To develop a solution that minimize construction, maintenance, and adverse environmental effects, road management must take into account as many alternative alignment options as they can. The idea of this research was to plan the network of forest roads in the Periyar Tiger Reserve's mountainous region using Geographic Information Systems (GIS) based on Multi-criteria Decision Analysis (MCDA). These techniques were applied using the study area's slope, aspect, Terrain, NDVI, River and susceptibility to landslides map. In addition, the road network created using the GIS-MCDA approach was contrasted with the existing road networks. First, the needed information was gathered from the research area. The key elements that affect the road network in the research area were found, and the necessary maps were produced and categorized. The maps were graded using MCDA to determine the weight of both useful aspects as the next step in determining the significance and role of the aforementioned elements in the cost of road building. Second, using the ArcGIS 10.4 weighted overlay analysis Tool, a forest potential map for road building was created by superimposing the weighted maps of the influencing elements. Thirdly, the competence of a map was divided into Six categories: very high, high, moderate, and low, very low, Restricted roading capability. Finally, using a weighted overlay method to combine the road network and road planning potential map, the existing road network was analyzed. The findings of this study indicated that the majority of existing roads were situated in high and moderate roading capability, while a small percentage was situated in low roading capability, which can be taken into account for alignment. These results suggested that the design of forest road planning in hilly areas can be more precisely accomplished using the multi-criteria evaluation method. The other forest area can employ the same methods as was used for this study.

Keywords: GIS; MCDA; forest road network planning; Periyar Tiger reserve

INTRODUCTION

Forest roads are essential for forest management, transportation of wood raw materials, and protection and forestry activities in mountainous areas. It is difficult to incorporate technical and environmental concerns into manual road planning. GIS capabilities have recently enabled concurrent information management based on important factors in road planning and rapid assessment of roads. [1,2,35,41].

One of the most important factors in forest road network planning was taking into account the costs of road construction and maintenance during the initial route location in the field. Because there was a close relationship between the costs of road construction, maintenance, and stability characteristics (soil and bedrock stability), it was necessary to locate the roads on more stable ground to reduce the total cost of road construction and maintenance. The road design and construction process is one of the most costly and damaging activities in forestry, as evidenced by slope failures and mass movement. [3]. To mitigate these negative effects, forest road managers must seek ways to expand road networks while also improving the environmental sustainability and public acceptance of road construction activities. [4,2].

To minimise the extent of these impacts, an assessment of the environmental impacts of road construction must be conducted prior to road construction. Previously, most forest road design criteria were based on accessing timber harvesting sites at the lowest possible cost. [5,6,7,8,9,10]. The process of designing and analyzing a skid trail was carried out using a GIS method .network in Russia and concluded that using GIS as a decision-making system can be a cost-effective method for providing appropriate alternatives in forest road locating. Multi-criteria analysis techniques are well known as decision-support tools for dealing with such complex decision-making processes, where technological, economic, and environmental factors must all be considered in order to obtain an overall assessment of the decision alternatives [11,12,13,14,15]. The analytic hierarchy process (AHP) has become one of the most widely used multi-criteria decision support systems to assist users by breaking down these complex decisions into a hierarchy [16,17,18,19,20]. The combination of AHP in a GIS environment allows for the combination of different types of information at different scales. The manual performance of such analysis was not only difficult but also time consuming. Unlike manual forest road planning, AHP allows you to use the ideas of various experts, calculate an incompatibility coefficient, and use quantitative and qualitative criteria. [35]. The AHP method, with the appropriate features and weights assigned to them, is frequently the most important factor in the accuracy of the results. Indeed, the AHP method assists a decision maker in prioritizing a goal and developing a set of criteria. The method also assists in the systematic and logical preparation of evidence for the selection of the best and most suitable road network alternative from the multi-criteria analysis [21]. In spite of this, MCDA has not been widely used for forest road planning in kerala. Therefore, the aim of this study was to design the forest road network using Geographical Information Systems (GIS) based on Multicriteria Decision Analysis (MCDA) in mountainous area of PTR. These methods were employed using slope, aspect, Terrain, NDVI, River and landslide susceptibility map of the study area. Moreover, road network generated by GIS- MCDA method compared with existing road networks.

Comment [M11]: Something seems to be missing here. Please verify.

MATERIALS AND METHODS

STUDY AREA

This study was conducted in the Eravangalar section of the Periyar Tiger Reserve in Kerala, a forest section covering approximately 15.46 square kilometers of forest area in the Periyar East Division of the Periyar Tiger Reserve. The coordinates were $9^{\circ}34'52.64''\text{N}$ and $77^{\circ}17'47.80''\text{E}$. The study area is located in a mountainous area that covers 15.46 square kilometres and has a slope ranging from 0% to 80%. The relief is very irregular, with elevations ranging from 900 to 1900 m. The average annual precipitation is 1150mm, with the wettest months being July and August. According to Forest Records, the road's name is Eravangalar-mavady road. Fig.1.

Comment [M12]: Is the study location an area or point? Coordinate values for areas should be two for Northings and two for Eastings.

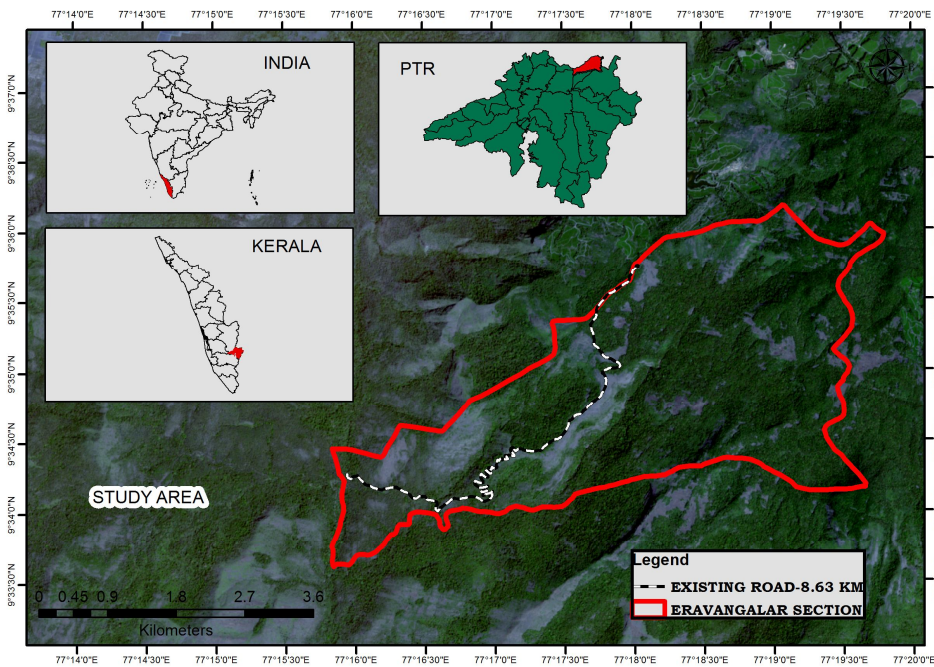


Fig.1. Study Area -Eravangalar -Mavady Road

DATA USED :**ALOS PALSAR DEM:**

ALOS-PALSAR (Advanced Land Observing Satellite Phased Array L-band Synthetic Aperture Radar) was launched on 2006 by the Japan Aerospace and Exploration Agency (JAXA). The ALOS-PALSAR was operational until May 12, 2011. The satellite has provided Earth observation data with high resolution for topographic mapping, disaster and environmental surveillance, and climate change investigation. ALOS was launched in a sun-synchronous orbit and circled around the Earth every 100 minutes, 14 times a day. ALOS-PALSAR returned to the original path (repetition cycle) every 46 days. The inter-orbit distance was about 59.7 km at the equator. ALOS-PALSAR has a spatial resolution of 12.5 m at 23.62 cm (1.27 GHz) wavelength with HV polarization and angle of incidence 38.7°. which is used to derive all layers for this analysis.

SENTINEL-2 DATA:

SENTINEL-2 is a European wide-swath, high-resolution, multispectral imaging mission. The full mission specification of the twin satellites flying in the same orbit but phased at 180°, is designed to give a high revisit frequency of 5 days at the Equator. SENTINEL-2 carries an optical instrument payload that samples 13 spectral bands: four bands at 10 m, six bands at 20 m and three bands at 60 m spatial resolution. The orbital swath width is 290 km. The main objectives of this mission are systematic global acquisitions of high-resolution, multispectral images allied to a high revisit frequency, continuity of multispectral imagery provided by the SPOT series of satellites and the USGS LANDSAT Thematic Mapper instrument and observation data for the next generation of operational products, such as land-cover maps, land-change detection maps and geophysical variables. These high-level objectives, determined after consultation with users, will ensure that SENTINEL-2 makes a significant contribution to Copernicus themes such as climate change, land monitoring, emergency management, and security. (ESA). Which is used for derive NDVI layers.

METHODS

In this study, 7 thematic layers associated with layers including slope, River, aspects, NDVI, landslide susceptibility and Terrain, which can influence forest roads and should be considered in the forest road network planning. Forest potential map of road construction was prepared by using these layers and overlaying them. The analyzed data were then prepared using ArcGIS 10.4 software. The effective factors were specified by field trips and the study of existing maps. Then using the Digital Elevation Model (DEM), a map corresponding to each of desired factors was produced. In fact, by using the DEM, the slope, aspect, and elevation maps were produced. NDVI, Stream buffer will prepared by using ArcGIS tools. landslide susceptibility data of Study area can be downloaded from open source Data Portals (landslide Susceptibility -DDMA Idukki, Kerala).

Comment [M13]: aligned

Comment [M14]: buffer was prepared

Input Parameter

Slope:

Slope is one of the main factors that should be noticed at planning forest road network. Slope both directly and indirectly affects many factors such as the volume of excavation and constructability. To provide a slope map, the DEM of the study area was used. The slope map was prepared in percent using the ALOS PALSAR DEM (12.5 M) of the study area. The slope map of the study area were classified into three classes (0-45%, 45-66% and >66%).(Figure 2).

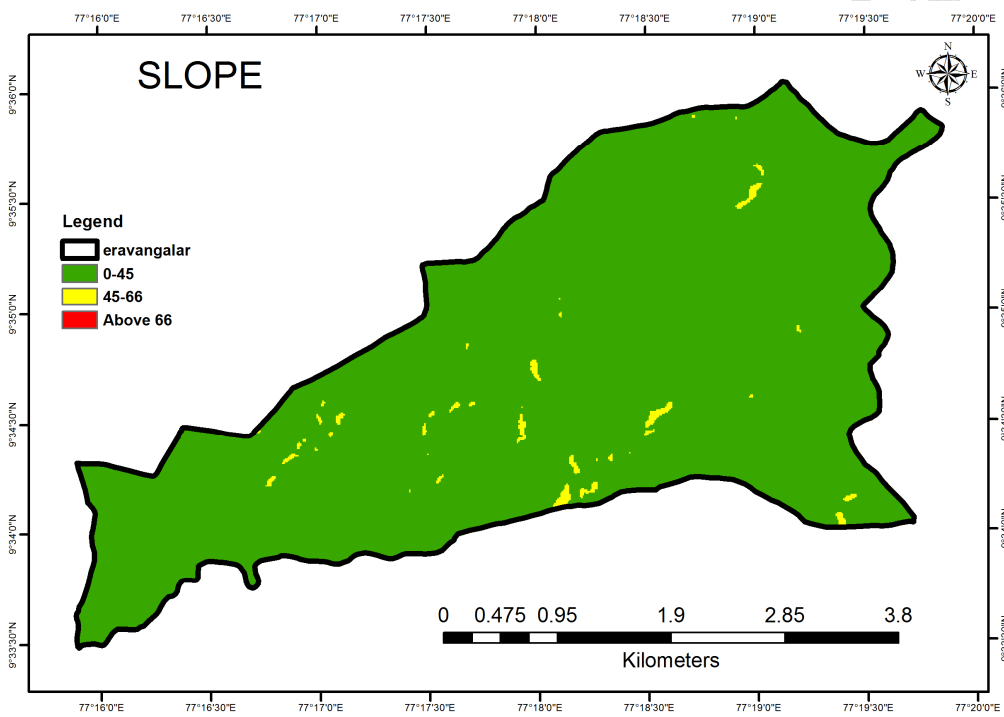


Fig.2. Slope Map

Aspect:

Aspect associated parameters such as exposure to sunlight, drying winds and rainfall are important factors in forest road. Aspect was the orientation or direction of slope that is measured clockwise in degrees from 0° to 360°, where 0° is north, 90° is east, 180° is south, and 270° is west. The study area were characterized as north, east, south and west in this study. (Figure 3).

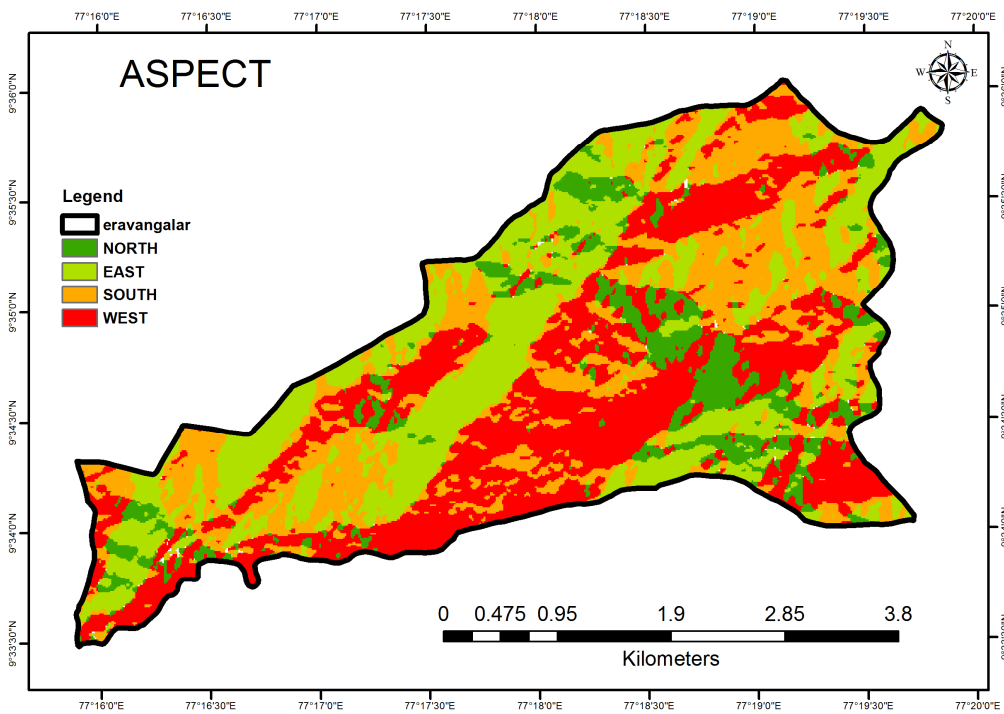


Fig.3. Aspect Map

Terrain :

Elevation (height above the sea level) is known by its effects on biological and natural factors. The elevation map of the study area were divided into four classes (806-1036,1036-1290,1290-1500,above 1500). (Figure 4)

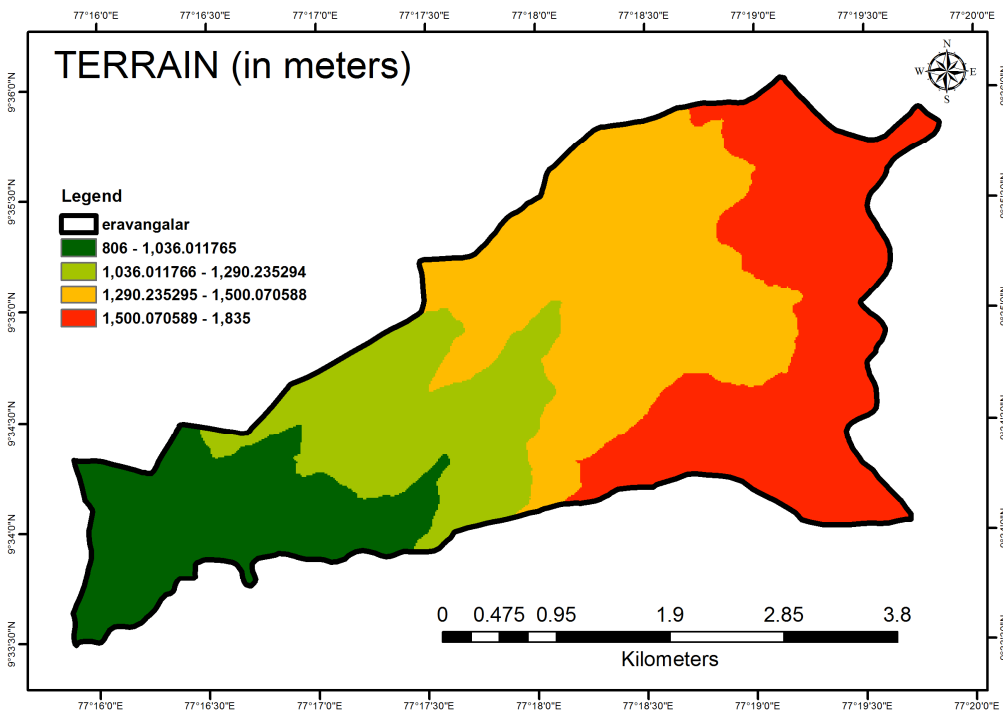


Fig.4. Terrain Map

NDVI

The normalized difference vegetation index (NDVI), which is derived from [remote-sensing](#) data, is closely linked to drought conditions. To determine the density of green on a patch of land, the distinct colors of visible and [near-infrared](#) sunlight reflected by the plants are observed. Range of NDVI is -1 to +1. Higher value of NDVI refers to healthy and dense vegetation. Lower NDVI values show sparse vegetation. The Normalized Difference Vegetation Index map (Fig 5) is prepared by using SENTINAL-2 images where band 4 is Near Infrared and band 5 is Red. Dense forest can be restricted for this analysis.

$$NDVI = ((BAND8 - BAND4) / (BAND8 + BAND4)).$$

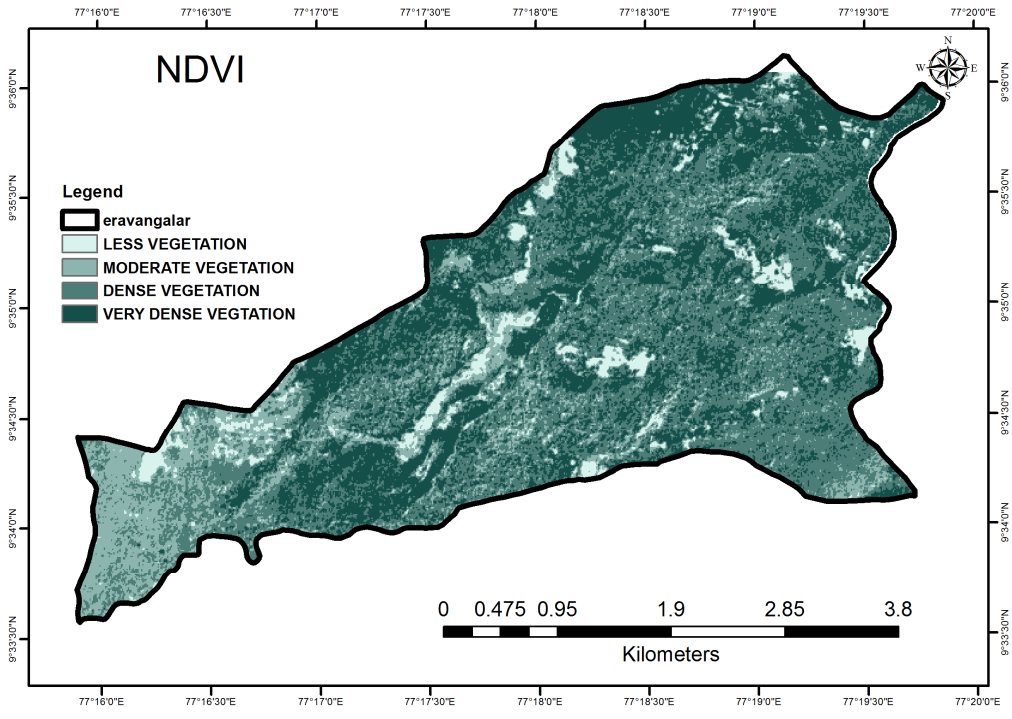


Fig.5. NDVI Map

UNDER PEE

River:

Streams may adversely affect by forest road. Three different buffer zones were created within the study area to determine to meter the streams affected the stream.(0-20, 20-40 and 40-60). (Figure 6)

Comment [M15]: Do you mean 'may adversely be affected by forest road' or 'may adversely affect forest road'?

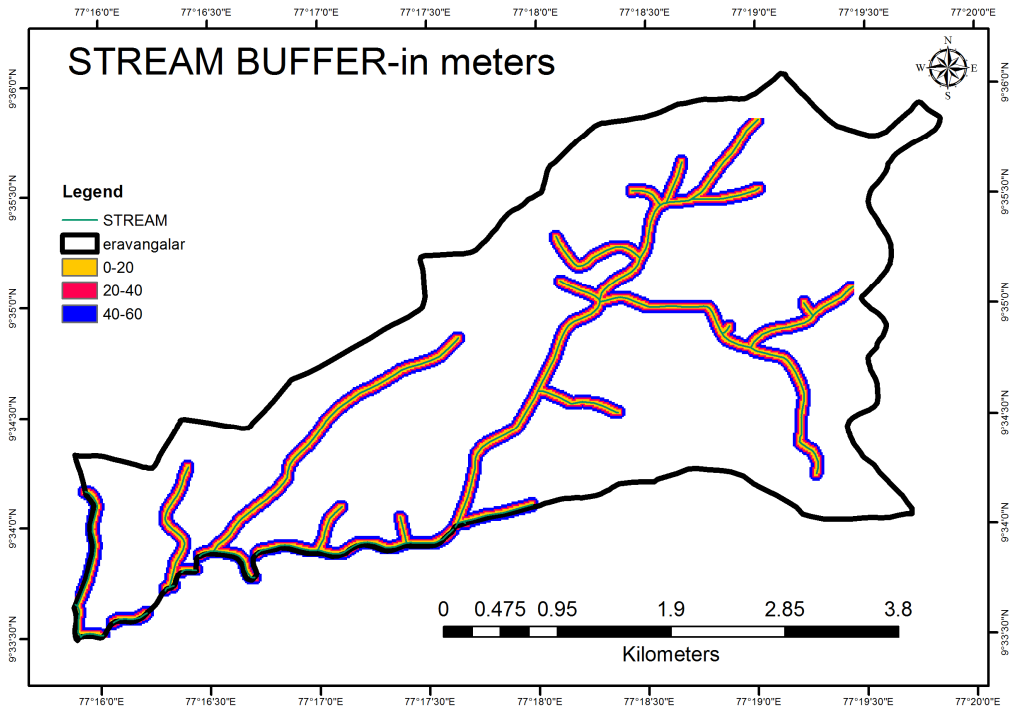


Fig.6. Buffer stream- Map

UNDE

Landslides susceptibility:

In natural disasters, the most common and the one who suffers most as shown. Vegetation, natural resources such as land and soil, as well as road and bridge projects, as well as harm. This type of landslide areas to be identified in order to prevent damage and route of these areas must not be passed. Landslide susceptibility was divided into two classes (high, low) (Fig.7.).

Comment [M16]: Rephrase these sentences to make them clearer.

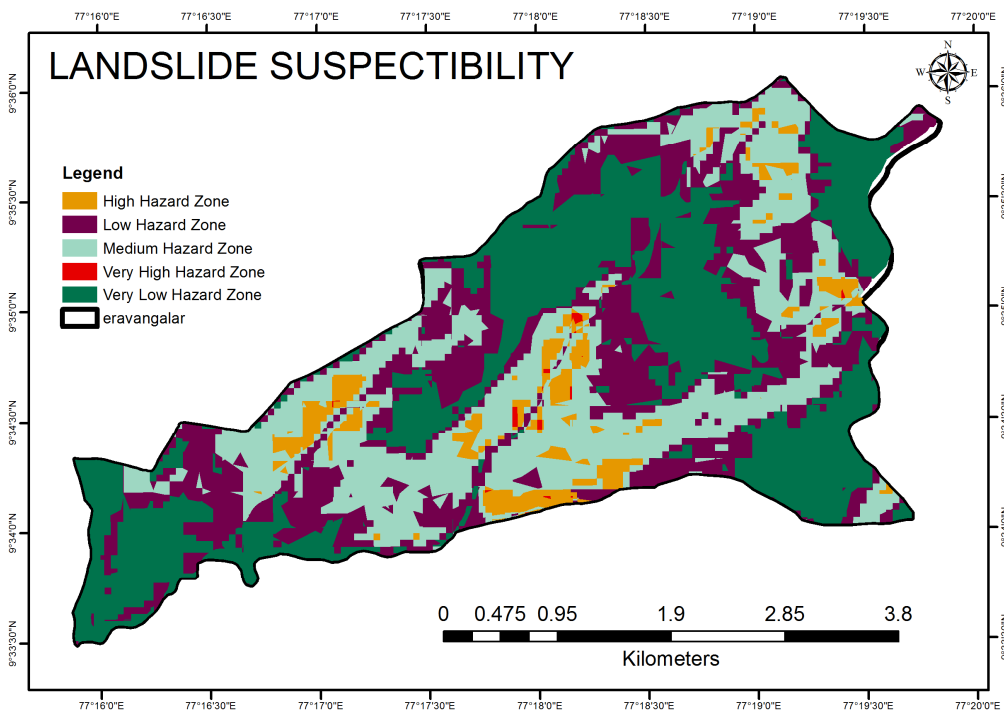


Fig.7. Landslide Susceptibility Map

GIS-based MCDA is a process that transforms and combines geographical data and value judgments to obtain information for decision making [21-42]. Although several methods exist for estimation of decision criteria in the MCDA, the analytical hierarchy process (AHP) developed by Saaty [30] is the most popular one. AHP is a flexible, yet structured methodology for analyzing and solving complex decision problems by structuring them into a hierarchical

framework. It is employed for rating/ranking a set of alternatives or for the selection of the best in a set of alternatives. The ranking is carried out with respect to an overall goal, which is broken down into a set of criteria (objectives or attributes) [21]. In other words, AHP is used to determine the weights of each criterion and analyze the relative importance of these criteria. In this step, prepared in accordance with the importance of their categories on the map using GIS-based MCDA, the factors affecting the maps were rating to determine their weight. In order to apply the AHP method, a questionnaire was used to ask the forest engineering road experts to obtain the relative weight for each criterion, according to the selected criteria (Table 1). The raster layers have been given weights based on the requirement and then analyzed by the weighted overlay tool in ArcGIS10.3. These attributes/layers are overlaid and a single layer composite is generated by assigning weight values to each attribute. After that, a Forest Road potential map is prepared with four classes (Low to Very High). Finally, the map is validated with actual Existing Road .

Comment [M17]: rated

Table .1. Distribution of attribute weightage and rating

Variables	Weights	Ranks	Classes
NDVI	10	1	Less vegetation
		2	Moderate vegetation
		3	Dense vegetation
		Restricted	Very dense vegetation
SLOPE	30	1	0-45%
		2	45-66%
		3	above 66%
ASPECT	20	1	North
		2	East
		3	South
		4	West
TERRAIN	10	1	806-1036 m
		2	1036-1290m
		3	1290-1500m
		4	above 1500 m
STREAM BUFFER	10	3	0-20 m
		2	20-40 m
		1	40-60 m
LANDSLIDE SUSCEPTABILITY	20	1	Verylow
		2	Low
		3	Veryhigh
		4	High
		5	Medium

Comment [M18]: susceptibility

RESULTS AND DISCUSSION

GIS-based MCD A technique was employed as a new approach to produce the forest road network planning. In this point, AHP was chosen over a variety of MCDA techniques to produce forest road network planning of the area.

Calculation of the factor weights has a crucial role in the production of forest roads construction maps when applying the MCD A technique. Each factor used has been identified and compiled by priority ranking

(Table.1.) Data integration was then performed to generate a value map. Each parameter is based on a weightage and the summation of the weight must be 100%. By overlaying the weighted maps of affecting factors, a map of forest potential road construction (FPRC) was produced (Fig.8). The later map showed six classes: very high, high, medium, low, very low and restricted road construction compatibility.

Existing road was overlaid in to that potential map and the road laid on low loading capability (critical locations) can be identified for further alignment., which is useful to forest managers for planning of forest road alignment. planned and existing road statistics are given in the (Table .2.) and Fig.9.

Today, forest managers and foresters should be more aware of the design and construction of forest roads and consider the design of road networks carefully. This is because of the fact that most of the costs of forest management are related to road construction and that the environmental effects of roads are irrecoverable [32].

Forest road network planners often need to make a decision between several objectives. Therefore, one of the most useful models could be the GIS-MCD A method. The use of GIS-MCD A qualitative and quantitative criteria can be employed and incorporated into decision making [27-35]. Furthermore, GIS systems provide the basic tools for forest road network planning. It offers a number of advantages compared to the traditional troublesome and time-consuming methods.

[35] also suggested that applying the GIS technique is preferential in comparison to the traditional method. The technical accuracy aspect of the proposed GIS-AHP method was a higher than that of the traditional method.

Comment [M19]: '....was higher than.....'

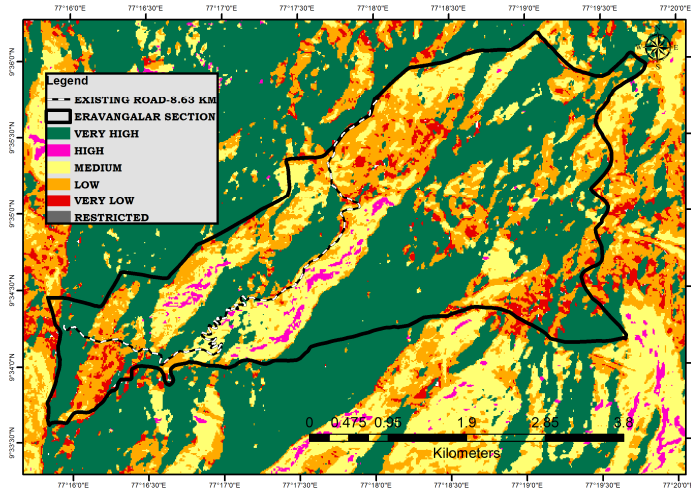
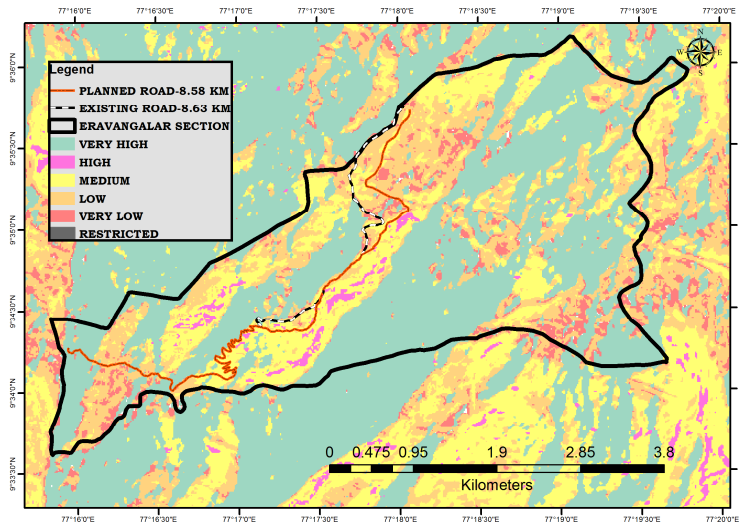


Fig.8. forest road potential construction map

UNDER PEER REVIEW

Fig.9 Forest roads construction stability map(planned and existing roads network)



UNDER PEER

Using GIS to design and evaluate forest road variants was very effective [35,36] and not only does it lead to the simplicity of using AHP method [37], but it can also be a good help in computing and analyzing data. It was proposed to be a good method to use in forest road network designing.

Table.2. Comparison of planned and existing roads network with regards to effective parameters

Parameters	Forest roads network	
	Planned roads network	Existing roads network
Length of roads (km)	8.58	8.63
Spacing of roads (m)	3	3
Percentage of roads length that are located in regions with medium forest potential to road construction	70	50
Percentage of roads length that are located in regions with the ground slope of less than 45%	90	80

CONCLUSION

The results of this study present that GIS based MCDA technique is the most valuable tools to locate and identify the mountainous area for forest road planning. This study has considered forest road network planning the MCDA-GIS-based method. The principle of planning forest road networks was to pay attention to slope, aspect, stream buffer, NDVI, landslide susceptibility and Terrain. Considering all the above factors simultaneously was not possible in the traditional approaches of roads network planning. In the GIS-MCDA-environment, all of the mentioned data layers can be analyzed simultaneously at a lower cost and short time. These results suggest that multi-criteria evaluation method can be more accurately to design forest road planning in mountainous area. The results showed that this methodology can be more helpful and road network can be planning quickly with less cost than traditional method.

Comment [M110]: forest road network planning using the MCDA-GIS-based method

Comment [M111]: can be more accurately used to design

Comment [M112]: planned

REFERENCES

- [1] Pentek, T.; Picman, D.; Potočnik, I.; Dvorscak, P and Nevecere, H. Analysis of an existing forest road network. *Croat. J. For. Eng.* 2005, 26(1), 39-50.
- [2] Gumus, S.; Acar, H. and Toksoy, D. Functional Forest Road network planning by consideration of environmental impact assessment for wood harvesting. *Environ. Monit. Assess.* pp. 2007, 142, 109-116.
- [3] Duncan, S.H., Ward, J.W., & Anderson, R.J. A method for assessing landslide potential as an aid in forest road placement. *Northwest Science*, 1987, 61(3), 152-159.
- [4] Heinemann, H.R. Opening-up planning taking into account environmental and social integrity. The Seminar on Environmentally Sound Forest Roads and Wood Transport, Romania, Proceedings, 1996, 62-69.
- [5] Liu, K.; Sessions, J. Preliminary planning of road systems using digital terrain models. *International Journal of Forest Engineering*. 1993, 4: 27-32.
- [6] Dean, D. Finding optimal routes for network of harvest site access roads using GIS-based techniques. *Canadian Journal of Forest Research*, 1997, 27, 11-22.
- [7] Murray, A.T. Route planning for harvest site access. *Canadian Journal of Forest Research*, 1998, 28: 1084-1087.
- [8] Chung, W.; Sessions, J.; Heinemann, H.R. An application of a heuristic network algorithm to cable logging layout

design. *International Journal of Forest Engineering*, 2004, 15:11–24.

- [9] Aruga, K. Tabu search optimization of horizontal and vertical alignments of forest roads. *Journal of Forest Research*, 2005, 10, 275–284.
- [10] Akay, A.E. Minimizing total costs of forest roads with computer-aided design model. *Sadhana-Academy Proceedings in Engineering Sciences*, 2006, 31(5), 621–633.
- [11] Pukkala, T. *Multi-objective Forest Planning: Managing Forest Ecosystems*. Kluwer Academic Publishers, 2002. Dordrecht.
- [12] Marinoni, O. Implementation of the analytical hierarchy process with VB in ArcGIS. *Comput Geosci*, 2004, 30, 637–646.
- [13] Malczewski, J. GIS-based multicriteria decision analysis: a survey of the literature. *International Journal of Geographical Information Science*, 2006.

UNDER PEER REVIEW

20(7),703–726.

- [14] Vadrevu, K.P., Eaturu, A. and Badarinath, K.V.S. Fire risk evaluation using multi-criteria analysis – a case study. *Environmental Monitoring and Assessment*, 2010.166(1-4),223-239.
- [15] Biswas, S.; Vacik, H.; Swanson, M.E. and Haque, S.M.S. Evaluation integrated watershed management using multiple criteria analysis – a case study at Chittagong hill tracts in Bangladesh. *Environmental Monitoring and Assessment*, 2011.2(7),73–90.
- [16] Akash, B.A.; Mamlook, R. and Mohsen, M.S. Multi-criteria selection of electric power plants using analytical hierarchy process. *Electric Power Systems Research*, 1999.52,29–35.
- [17] Chan, F.T.S., Chan, M.H. and Tang, N.K.H. Evaluation methodologies for technology selection. *Journal of Materials Processing Technology*, 2000.107,330–337.
- [18] Gercek, H.; Karpak, B. and Kilincaslan, T. A multiple criteria approach for the evaluation of the rail transit networks in Istanbul. *Transportation*, 2004.31, 203–228.
- [19] Coulter, E.D., Coakley, J. and Sessions, J. The analytical hierarchy process: A tutorial for use in prioritizing forest road investment to minimize environmental effects. *International Journal of Forest Engineering*, 2006.17,51–70.
- [20] Sener, S.; Sener, E. and Karaguzel, R. Solid waste disposal site selection with GIS and AHP methodology: a case study in Senirkent-Uluborlu (Isparta) basin, Turkey. *Environmental Monitoring and Assessment*, 2011.173(1-4),533-554.
- [21] Malczewski J. GIS and multicriteria decision analysis. 1999. John Wiley and Sons, Toronto
- [22] Kangas, J. and Pukkala, T. Operationalization of biodiversity as a decision objective in tactical forest planning. *Canadian Journal of Forest Research*, 1996.26,103–111.
- [23] Kangas, J. and Kangas, A. Multiple criteria decision support in forest management – the approach, methods applied, and experiences gained. *Forest Ecology and Management*, 2005.207,133–143.
- [24] Zeng, H.; Talkkari, A.; Peltola, H. and Kellomaiki, S. A GIS-based decision support system for risk assessment of wind damage in forest management. *Environmental Modelling and Software*, 2007.22,1240–1249.
- [25] Gomontean, B.; Gajaseeni, J.; Edwards-Jones, G. and Gajaseeni, N. The development of appropriate ecological criteria and indicators for community forest conservation using participatory methods: a case study in northeastern Thailand. *Ecological Indicators*, 2008,8,614–624.
- [26] Abdi, E.; Majnounian, B.; Darvishsefat, A.; Mashayekhi, Z. and Sessions, J. A GIS-MCE based model for forest road planning. *Journal of Forest Science*, 2009,55(4),171-176.
- [27] Eastman, J.R. IDRISI for Windows Users Guide Version Kilimanjaro. Clark Labs for Cartographic Technology and Geographic Analysis, 2003, Clark University.
- [28] Günlü, A. *Forest Site Classification Using Direct, Indirect and Remote Sensing Methods*. PhD thesis, Karadeniz Technical University, The Graduate School of Natural and Applied Sciences, Trabzon: Turkey, 2009.
- [29] Nilsen, T.H.; Wright, R.H.; Vlasic, T.C.; Spangle, W.E.: Relative slope stability and land-use planning in the San Francisco Bay region, California. U.S. Geological Survey Professional Paper 944:96p. 1979.
- [30] Saaty, T.L. *The Analytical Hierarchy Process, Planning Priority, Resource Allocation*. RWS Publications, USA. 1980.
- [31] Samani, J.M.V. and Solimani, A. Uncertainty Analysis of Routed Outflow in Rockfill Dams. *Journal of Agricultural*

Science and Technology, 2008.10, 55-66.

- [32] Dutton, A.L.; Loague, K. and Wemple, B.C. Road sediment production and delivery: Processes and management. *Earth Surf. Process. Landform*, 2005.30, 325-338.
- [33] Session, J.; Wing, A.; Coulter, E.D.: Developing a Decision Support System to Improve Transportation. *Silva Fennica*, 2001, 40(1):143-160.
- [34] Dudhani S and Sinha AK. GIS database management for planning of Hydel Power Generation. In: 6th Annual International Conference and Exhibition, Map India Conference, 2003.
- [35] Naghdi, R. and Babapour, R. Planning evaluating off road network with respect environmental aspects via GIS application (case study: shafaroud forest, northern Iran). *Proceeding of second international conference on environmental and computer science.. Dubai, UAE. 424-427, 2009.*
- [36] Majnounian B, Abdi E and Darvishsefat A. Planning and technical evaluating of forest road Networks from accessibility point of view using GIS (Case study: Namkhane district, Kheyroud forest). *Iranian J. Nat. Res.* 2007, 60, 907-919.
- [37] Raafatnia, N.; Abdi, O and Shataee, S. Determining proper method of preliminary forecasting of mountain and forest roads using GIS. *Iranian Journal of For. and Popl. Res.* 2006, 14(3), 244-257.
- [38] Kunwoo, C.: Studies on forest road construction in mountain forest, Kangwoon national university, Res. Bul. Exp. F. 16, 109-131, 1990.
- [39] Audery, M M. *Development of environmental routing strategies for the management of forest access roads using GIS and GPS*. PhD thesis, National University of Ireland, Dublin, 74pp 2001.
- [40] Backmund F. Indices for the degree of accessibility of forest districts via roads. *Zeitschr. F. Forstw.*, 119:445-452. 1968.
- [41] Mohammadi Samani, K., Hosseiny, S.A., Lotfalian, M., Najafi, A. Planning road network in mountain forests using GIS and Analytic Hierarchical Process (AHP). *Caspian Journal of environmental sciences*, 2010, 8(2), 151-162.
- [42] Kavzoğlu, T.; Şahin, E. and Çölkese, İ. Landslide susceptibility mapping using GIS-based multicriteria decision analysis, support vector machines, and logistic regression. *Landslides*, 2013, DOI:10.1007/s10346-013-0391-7.

- [43] Naghdi, R; Soleiman M; Babapour, R and Majid A. Designing of forest road network based on technical and economical considerations using GIS-AHP. *International Journal of Applied and Natural Sciences*, 2012, 1(2), 39-44.
- [44] Hayati, E; Abdi, E; Majnounian, B and Makhdom, M. Application of Sensitivity Analysis in Forest Road Networks Planning and Assessment. *J. Agr. Sci. Techn.* 2013, 15, 1-12.
- [45] Hayati, E; Majnounian, B; Abdi, E; Session, J and Makhdom, M. An expert-based approach to forest road network planning by combining Delphi and spatial multi-criteria evaluation. *Environ. Monit. Assess.* 2013 185: 1767-17.

UNDER PEER REVIEW