

Original Research Article

GIS-BASED PLANNING OF FOREST ROAD ALIGNMENT IN THE PERIYAR TIGER RESERVE, KERALA, INDIA

ABSTRACT

In hilly places, constructing and building forest roads require a variety of economic and environmental criteria. To develop a solution that minimize construction, maintenance and adverse environmental effects, road management must take into account as many alternative alignment options as they can. The idea of this research was to plan the network of forest roads in the Periyar Tiger Reserve's mountainous region using Geographic Information Systems (GIS) based on Multi-Criteria Decision Analysis (MCDA). These techniques were applied using the slope, aspect, terrain, NDVI, drainage, and susceptibility to landslide data sets. In addition, the road network created using the GIS-MCDA approach was contrasted with the existing road networks. First, the needed information was gathered from the research area. The key elements that affect the road network in the research area were found, and the necessary maps were produced and categorized. The maps were graded using MCDA to determine the weight of both useful aspects as the next step in determining the significance and role of the aforementioned elements in the cost of road building. Second, using the ArcGIS 10.4 weighted overlay analysis tool, a forest potential map for road building was created by overlaving the weighted maps of the influencing elements. Third, the competence of a map was divided into six categories: very high, high, moderate, low, very low, and restricted. Finally, using a weighted overlay method to combine the road network and road planning potential map, the existing road network was analyzed. The findings of this study indicated that the majority of existing roads were located in high and moderate road capability. A small percentage was located in low road capability, which can be taken into account for alignment. These results suggested that the design of forest road planning in hilly areas can be more precisely accomplished using the multi-criteria evaluation method. Similar methods used in this study can be applied to other forested sites.

Comment [EES1]: Elevation? Slope and aspect are also terrain-related attributes.

Comment [EES2]: Little relevant.

Comment [EES3]: Better word: suitability.

Keywords: GIS; MCDA; forest road network planning; Periyar Tiger reserve

INTRODUCTION

Forest roads are essential for forest management, transportation of wood raw materials, protection, and forestry activities in mountainous areas. It is difficult to incorporate technical and environmental concerns into manual road planning. Geographical Information System (GIS) capabilities have recently enabled concurrent information management based on important factors in road planning seeking rapid assessment of roads [1,2,35,41]. One of the most important factors in forest road network planning is the cost of road construction and maintenance during the initial route location in the field. Because of the close relationship between the costs of road construction, maintenance, and soil and bedrock stability, it is necessary to locate the roads on more stable terrain to reduce the total costs of road construction and maintenance. The road design and construction process is one of the most costly and damaging activities in forestry, as evidenced by slope failures and mass movement [3]. To mitigate these negative effects, forest road managers must seek ways to expand road networks with the improved environmental sustainability and public acceptance of road construction activities [2,4].

To minimize the extent of these impacts, environmental impacts of road construction must be assessed prior to the road construction. Previously, most of forest road design criteria were based on existing timber harvesting sites at the lowest possible cost [5–10]. The process of designing and analyzing a skid trail was carried out using a GIS method in Russia and concluded that using GIS as a decision-making system can be a cost-effective method for providing appropriate alternatives in forest road locating. Multi-criteria analysis techniques are well known as decision-support tools for dealing with such complex decision-making processes where technological, economic, and environmental factors must all be considered in order to obtain an overall assessment of the decision alternatives [11–15]. The analytic hierarchy process (AHP) has become one of the most widely used multi-criteria decision support systems to assist users by breaking down these complex decisions into a hierarchy [16–20].

The combination of AHP in a GIS environment allows for the combination of different types of information at different scales. The manual performance of such analysis was not only difficult but also time consuming. Unlike manual forest road planning, AHP allows us to use the ideas of various experts, calculate incompatibility coefficients based on quantitative and qualitative criteria [35]. The AHP method, with the appropriate features and weights, is frequently the best choice in obtaining accurate results. Indeed, the AHP method assists decision makers in prioritizing goals and developing sets of appropriate criteria. The method also assists in the systematic and logical preparation of evidence for the selection of the best and most suitable road network alternative from the multi-criteria analysis [21]. In spite of this, the GIS-based Multicriteria Decision Analysis (MCDA) has not been widely used for forest road planning in Kerala. Therefore, the aim of this study was to design the forest road network using in mountainous area of Periyar Tiger Reserve (PTR). These methods were employed using slope, aspect, terrain, Normalized Difference Vegetation Index (NDVI), river, and landslide susceptibility maps of the study area. Moreover, road network generated by GIS-MCDA method was compared with existing road networks.

MATERIALS AND METHODS

STUDY AREA

This study was conducted in the Eravangalar section of the Periyar Tiger Reserve in Kerala, a forest section

Comment [EES4]: Please, add the citation in numerical order throughout the text.

covering approximately 15.46 square kilometers of forest area in the Periyar East Division of the Periyar Tiger Reserve. The coordinates were 9°34'52.64"N and 77°17'47.80"E. The study area is located in a mountainous area covering 15.46 square kilometres, with slope ranging from 0% to 80%. The relief is very irregular, with elevations ranging from 900 to 1900 m. The average annual precipitation is 1150mm, with the wettest months from July to August. According to the Forest Records, the name of the road is Eravangalar-Mavady road (Fig.1).

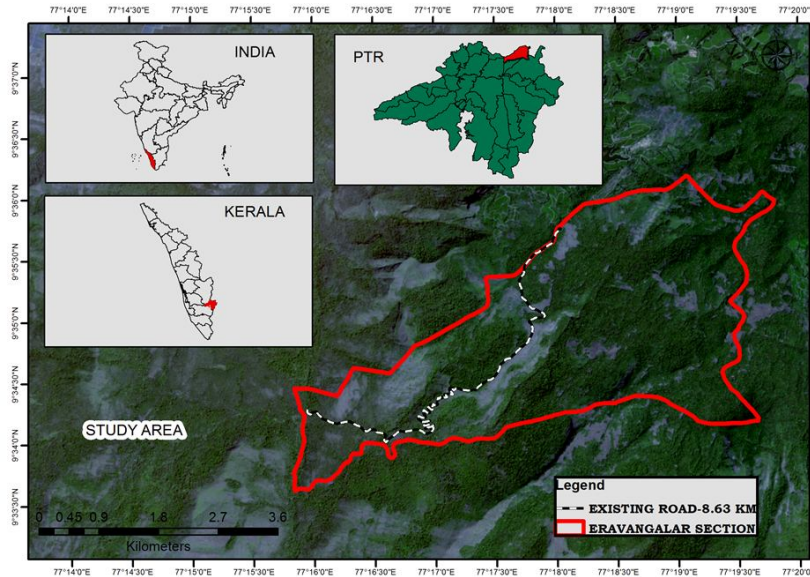


Fig.1. Study area showing the location of the Eravangalar-Mavady Road

DATA SET

ALOS PALSAR DEM

The Advanced Land Observing Satellite Phased Array L-band Synthetic Aperture Radar (ALOS/PALSAR) satellite was launched in 2006 by the Japan Aerospace and Exploration Agency (JAXA). The ALOS/PALSAR was operational until 12 May 2011. The satellite has provided Earth observation data with high resolution for topographic mapping, disaster, and environmental surveillance, and climate change investigation. ALOS was launched in a sun-synchronous orbit and circled around the Earth every 100 minutes, 14 times a day. ALOS/PALSAR returned to the original path (repetition cycle) every 46 days. The inter-orbit distance was about 59.7 km at the equator and had a spatial resolution of 12.5 m at 23.62 cm (1.27 GHz) wavelength with HH and HV polarization and angle of incidence 38.7°, which was used to derive all layers for this analysis.

SENTINEL-2 DATA

Sentinel-2 satellite is a European wide-swath, high-resolution, multispectral imaging mission. The full mission

Comment [EES5]: The details of digital elevation model derived from this satellite that was used in this study are missing. Appropriate citations/main characteristics are also missing for both ALOS/PALSAR satellite and DEM derived from PALSAR.

specification of the twin satellites flying in the same orbit but phased at 180°, is designed to give a high revisit frequency of 5 days at the Equator. Sentinel-2 carries an optical instrument payload that samples 13 spectral bands: four bands at 10 m, six bands at 20 m, and three bands at 60 m spatial resolution. The orbital swath width is 290 km. The main objectives of this mission are systematic global acquisitions of high-resolution, multispectral images allied to a high revisit frequency, continuity of multispectral imagery provided by the SPOT series of satellites and the USGS Landsat Thematic Mapper instrument, and observation data for the next generation of operational products, such as land-cover maps, land-change detection maps and geophysical variables. These high-level objectives, determined after consultation with users, ensure that Sentinel-2 makes a significant contribution to Copernicus themes such as climate change, land monitoring, emergency management, and security, which can be used to derive NDVI layers.

Comment [EES6]: Key citations of Sentinel-2 are missing in this paragraph.

METHODS

In this study, thematic layers associated with slope, river, aspects, NDVI, landslide susceptibility, and terrain, which can influence forest roads, were considered in the forest road network planning. Forest potential map of road construction was prepared by using these layers and overlaying them. The analyzed data were prepared using ArcGIS 10.4 software. The effective factors were specified by field trips and by existing maps. Then, using the Digital Elevation Model (DEM), a map corresponding to each of desired factors was produced. In fact, by using the DEM, slope, aspect, and elevation maps were produced. NDVI, Stream buffer was prepared by using ArcGIS tools. Landslide susceptibility data, which were downloaded from open source data portals (Landslide Susceptibility -DDMA Idukki, Kerala).

Input Parameters

Slope

Slope is one of the main factors that need to be considered in the planning forest road network. Slope directly and indirectly affects many factors such as the volume of excavation and constructability. To provide a slope map, the DEM of the study area was used. The slope map was prepared in units of percentage using the ALOS/PALSAR DEM (12.5 m) of the study area. The slope map was classified into three classes: 0-45%; 45-66%; and >66% (Figure 2).

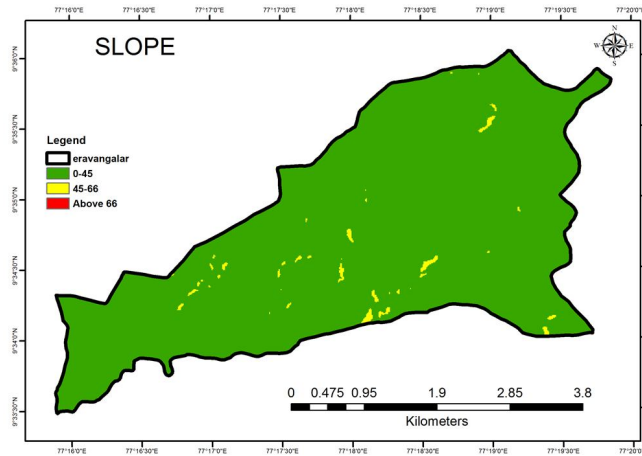


Fig.2. Slope map of the study area

Aspect

Aspect associated parameters such as exposure to sunlight, drying winds, and rainfall are important factors in the forest road design. Aspect was the orientation or direction of slope that is measured clockwise in degrees from 0° to 360°, where 0° is north, 90° is east, 180° is south, and 270° is west. The study area was characterized as north, east, south, and west in this study (Figure 3).

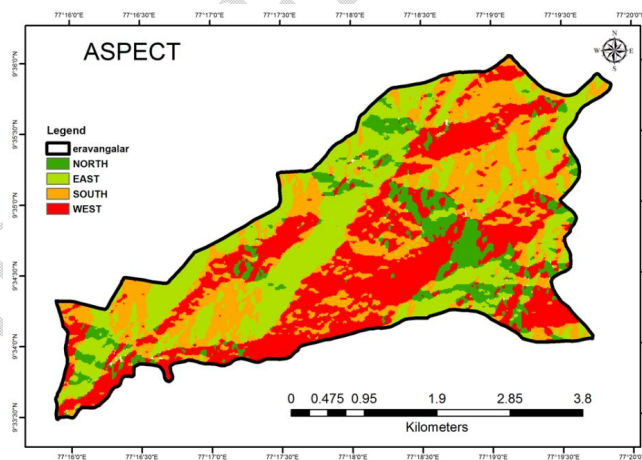


Fig.3. Aspect map of the study area

Terrain

Elevation (height above the sea level) is known by its effects on biological and natural factors. The elevation map of the study area were divided into four classes: 806-1036 m; 1036-1290 m; 1290-1500 m; and ≥ 1500 m (Figure 4).

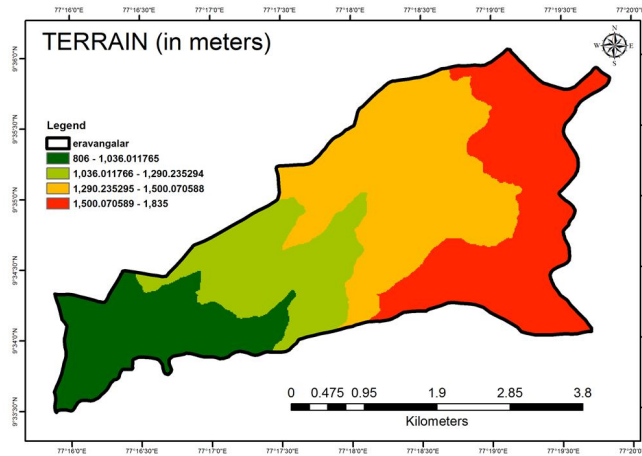


Fig.4. Terrain Map

NDVI

The NDVI, which is derived from [remotesensing](#) data, is closely linked to drought conditions. To determine the density of green on a patch of land, the distinct colors of visible and [near-infrared](#) sunlight reflected by the plants are observed. [The range of NDVI is -1 to +1](#). Higher value of NDVI refers to healthy and dense vegetation. Lower NDVI values show sparse vegetation. The [NDVI map \(Fig.5\) was prepared by using Sentinel-2 images acquired in band 8 \(near-infrared\) and band 4 \(red\)](#). Dense forest can be restricted for this analysis.

$$NDVI = ((BAND8 - BAND4) / (BAND8 + BAND4)).$$

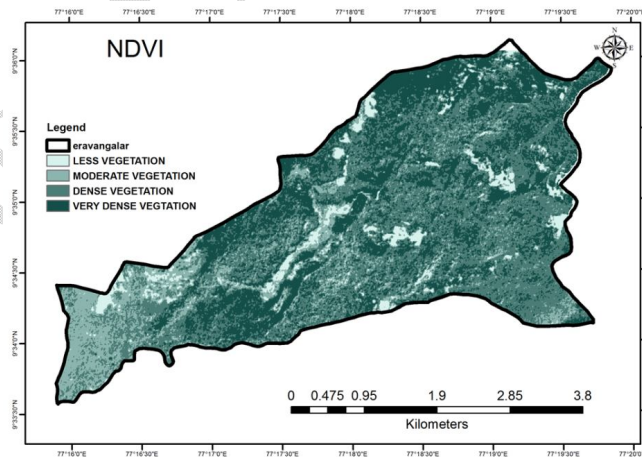


Fig.5. NDVI map of the study area

River

Streams may be adversely affected by forest road. Three different buffer zones were created within the study area: 0-20 m; 20-40 m; and 40-60 m (Figure 6).

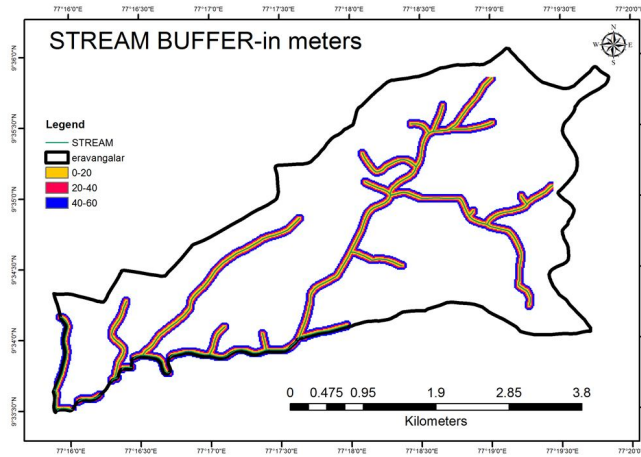


Fig.6. Buffer stream map of the study area

Landslides susceptibility

In natural disasters, the most common and the one who suffers most as shown. Vegetation, natural resources such as land and soil, as well as road and bridge projects, as well as harm. This type of landslide areas to be identified in order to prevent damage and route of these areas must not be passed. Landslide susceptibility was divided into two classes: high and low (Fig.7).

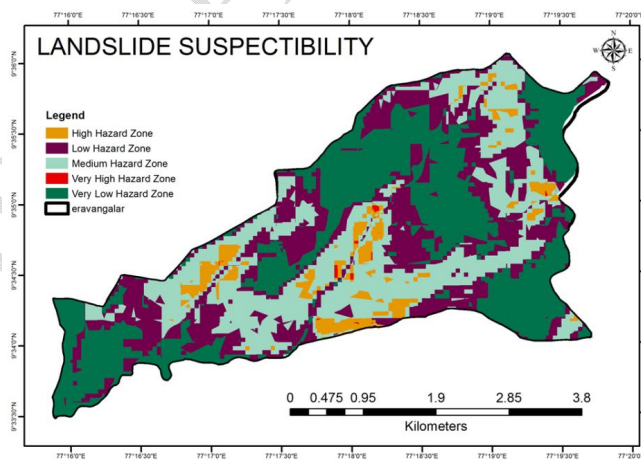


Fig.7. Landslide susceptibility map of the study area

Comment [EES7]: Too much citations for a single sentence.

GIS-based MCDA is a process that transforms and combines geographical data and value judgments to obtain information for decision making [21–42]. Although several methods exist for estimation of decision criteria in the MCDA, the analytical hierarchy process (AHP) developed by Saaty [30] is the most popular. AHP is a flexible, yet structured methodology for analyzing and solving complex decision problems by structuring them into a hierarchical framework. It is employed for rating/ranking a set of alternatives or for the selection of the best in a set of alternatives. The ranking is carried out with respect to an overall goal, which is broken down into a set of criteria (objectives or attributes) [21]. In other words, AHP is used to determine the weights of each criterion and analyze the relative importance of these criteria. In this step, prepared in accordance with the importance of their categories on the map using GIS-based MCDA, the factors affecting the maps were rating to determine their weight. In order to apply the AHP method, a questionnaire was used to ask the forest engineering road experts to obtain the relative weight for each criterion according to the selected criteria (Table 1). The raster layers have been given weights based on the requirement and then analyzed by the weighted overlay tool in ArcGIS10.3. These attributes/layers are overlaid and a single layer composite is generated by assigning weight values to each attribute. After that, a forest road potential map was prepared with four classes (low to very high). Finally, the map was validated with the actual existing road.

Table .1. Distribution of attribute weightage and rating

Variables	Weights	Ranks	Classes
NDVI	10	1	Less vegetation
		2	Moderate vegetation
		3	Dense vegetation
		Restricted	Very dense vegetation
Slope	30	1	0-45%
		2	45-66%
		3	above 66%
Aspect	20	1	North
		2	East
		3	South
		4	West
Terrain	10	1	806-1036 m
		2	1036-1290m
		3	1290-1500m
		4	above 1500 m
Stream buffer	10	3	0-20 m
		2	20-40 m
		1	40-60 m
Landslide susceptibility	20	1	Very low
		2	low
		3	Very high
		4	high
		5	medium

RESULTS AND DISCUSSION

GIS-based MCD A technique was employed as a new approach to produce the forest road network planning. In this point, AHP was chosen over a wide variety of MCDA techniques to produce forest road network planning of the area. Calculation of the factor weights has a crucial role in the production of forest roads construction maps when applying the MCD A technique. Each factor used has been identified and compiled by priority ranking (Table 1). Data integration was then performed to generate a value map. Each parameter is based on a weightage and the summation of the weight must be 100%. By overlaying the weighted maps of affecting factors, a map of forest potential road construction (FPRC) was produced (Fig.8). The later map showed six classes: very high, high, medium, low, very low, and restricted road construction compatibility.

Existing road was overlaid into that potential map and the road laid on low loading capability (critical locations) can be identified for further alignment, which is useful to forest managers for planning of forest road alignment. Planned and existing road statistics are given in the Table 2 and Fig.9.

Today, forest managers and foresters should be more aware of the design and construction of forest roads and consider the design of road networks carefully. This is because of the fact that most of the costs of forest management are related to road construction and that the environmental effects of roads are irretrievable [32].

Forest road network planners often need to make a decision between several objectives. Therefore, one of the most useful models is the GIS-MCD A method. The use of GIS-MCD A qualitative and quantitative criteria can be employed and incorporated into decision making [27-35]. Furthermore, GIS systems provide the basic tools for forest road network planning. It offers a number of advantages compared to the traditional troublesome and time-consuming methods. [35] also suggested that applying the GIS technique is preferential in comparison to the traditional method. The technical accuracy aspect of the proposed GIS-AHP method was a bit higher than that of the traditional method.

Comment [EES8]: Please, add more details in the text about the most valuable information provided by this table and figure.

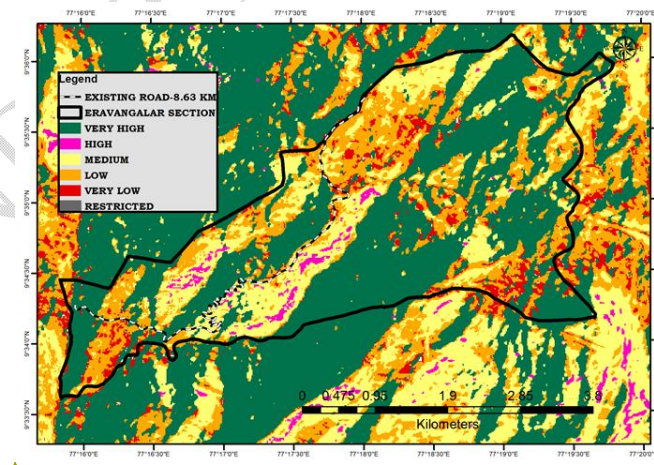


Fig.8. Forest road potential construction map

Formatted: Font: 10 pt

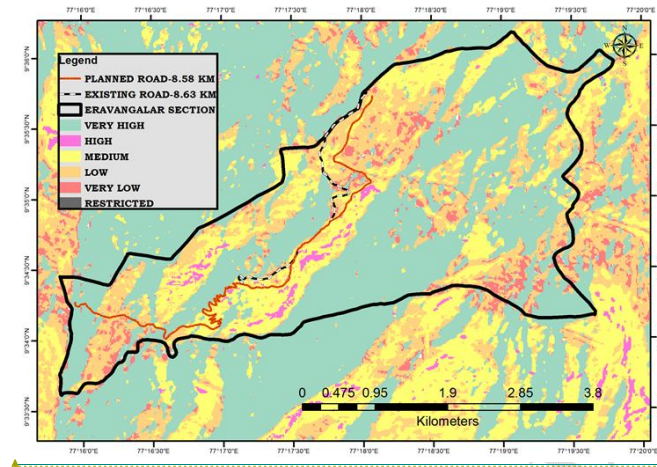


Fig.9.Forest roads construction stability map(planned and existing roads network)

Using GIS to design and evaluate forest road variants was very effective [35,36] and not only does it lead to the simplicity of using AHP method [37], but also it can be a good help in computing and analyzing data. It was proposed to be a good method to use in forest road network designing.

Table 2. Comparison of planned and existing roads network with regards to effective parameters

Parameters	Forest roads network	
	Planned roads network	Existing roads network
Length of roads (km)	8.58	8.63
Spacing of roads (m)	3	3
Percentage of roads length that are located in regions with medium forest potential to road construction	70	50
Percentage of roads length that are located in regions with the ground slope of less than 45%	90	80

CONCLUSIONS

The results of this study show that GIS-based MCDA technique is the most valuable tool to locate and identify the mountainous area for forest road planning. This study considered forest road network planning the MCDA-GIS-based method. The principle of planning forest road networks was to pay attention to slope, aspect, stream buffer, NDVI, landslide susceptibility and terrain. Considering these factors simultaneously is not possible in the traditional approaches of roads network planning. In the GIS-MCDA-environment, all of the mentioned data layers can be analyzed simultaneously at lower costs and short time. These results suggest that multi-criteria evaluation method can be more accurate to plan forest roads in mountainous areas. The results showed that this methodology can be more helpful and road network can be planning quickly with less cost than traditional methods.

REFERENCES

Formatted: Font: 10 pt

Comment [EES9]: Not sure, the authors did not evaluate other techniques in this study.

- [1] Pentek T, Picman D, Potocnik I, Dvorscak P, Nevecere IH. Analysis of an existing forest road network. *2005*;26(1):39-50.
- [2] Gumus S, Acar HH, Toksoy D. Functional forest road network planning by consideration of environmental impact assessment for wood harvesting. *Environ Monit Assess*. 2007;142:109-16.
- [3] Duncan SH, Ward JW, Anderson RJ. A method for assessing landslide potential as an aid in forest road placement. *Northwest Sci*. 1987;61(3):152-59.
- [4] Heinemann HR. Opening-up planning taking into account environmental and social integrity. The Seminar on Environmentally Sound Forest Roads and Wood Transport, Romania, Proceedings, 1996, p. 62-69.
- [5] Liu K, Sessions J. Preliminary planning of road systems using digital terrain models. *Int J For Eng*. 1993;4:27-32.
- [6] Dean D. Finding optimal routes for networks of harvest site access roads using GIS-based techniques. *Can J For Res*. 1997;27:11-22.
- [7] Murray AT. Route planning for harvest site access. *Can J For Res*. 1998;28:1084-7.
- [8] Chung W, Sessions J, Heinemann HR. An application of a heuristic network algorithm to cable logging layout design. *Int J For Eng*. 2004;15:11-24.
- [9] Aruga, K. Tabu search optimization of horizontal and vertical alignments of forest roads. *J For Res*. 2005;10:275-84.
- [10] Akay AE. Minimizing total costs of forest roads with computer-aided design model. *Sadhana Acad Proc Eng Sci*. 2006;31(5):621-33.
- [11] Pukkala T. *Multi-Objective Forest Planning: Managing Forest Ecosystems*. Kluwer Academic Publishers, Dordrecht, 2002.
- [12] Marinoni O. Implementation of the analytical hierarchy process with VB in ArcGIS. *Comput Geosci*. 2004;30:637-46.
- [13] Malczewski J. GIS-based multicriteria decision analysis: a survey of the literature. *Int J Geogr Inf Sci*. 2006;20(7):703-26.
- [14] Vadrevu KP, Eaturu A, Badarinath, KVS. Fire risk evaluation using multi-criteria analysis – a case study. *Environ Monit Assess*. 2010;166(1-4):223-39.
- [15] Biswas S, Vacik H, Swanson ME, Haque SMS. Evaluating integrated watershed management using multiple criteria analysis – a case study at Chittagong hill tracts in Bangladesh. *Environ Monit Assess*. 2011;2(7):73-90.
- [16] Akash, BA, Mamlook R, Mohsen MS. Multi-criteria selection of electric power plants using analytical hierarchy process. *Electr Power Syst Res*. 1999;52:29-35.
- [17] Chan FTS, Chan MH, Tang NKH. Evaluation methodologies for technology selection. *J Mat Proc Technol*. 2000;107:330-37.
- [18] Gercek H, Karpak B, Kilincaslan T. A multiple criteria approach for the evaluation of the rail transit networks in Istanbul. *Transportation*. 2004;31:203-28.
- [19] Coulter ED, Coakley J, Sessions J. The analytical hierarchy process: A tutorial for use in prioritizing forest road investment to minimize environmental effects. *Int J For Eng*. 2006;17:51-70.
- [20] Sener S, Sener E, Karaguzel R. Solid waste disposal site selection with GIS and AHP methodology: a case study in Senirkent-

- Uluborlu(Isparta)basin,Turkey.EnvironMonitAssess,2011;173(1-4):533-54.
- [21] Malczewski J. GIS and multicriteria decision analysis. John Wiley and Sons, Toronto, 1999.
- [22] Kangas J., Pukkala T. Operationalization of biodiversity as a decision objective in tactical forest planning. 1996;26:103-11.
- [23] Kangas J., Kangas A. Multiple criteria decision support in forest management-the approach-methods applied, and experiences gained. 2005;207:133-43.
- [24] Zeng H., Talkkari A., Peltola H., Kellomaiki S. A GIS-based decision support system for risk assessment of wind damage in forest management. Env Model Softw, 2007;22:1240-49.
- [25] Gomontean B., Gajasenii J., Edwards-Jones G., Gajasenii N. The development of appropriate ecological criteria and indicators for community forest conservation using participatory methods: a case study in northeastern Thailand. Ecol Indic, 2008; 8:614-24.
- [26] Abdi E., Majnounian B., Darvishsefat A., Mashayekhi Z., Sessions J. A GIS-MCE based model for forest road planning. J For Sci, 2009; 55(4):171-76.
- [27] Eastman J.R. IDRISI for Windows, Users Guide Version Kilimanjaro. Clark Labs for Cartographic Technology and Geographic Analysis, 2003, Clark University.
- [28] Günlü, A. Forest Site Classification Using direct and indirect remote sensing methods. Ph.D. thesis, Karadeniz Technical University, The Graduate School of Natural and Applied Sciences, Trabzon, Turkey, 2009.
- [29] Nilsen, T.H.; Wright, R.H.; Vlasic, T.C.; Spangle, W.E.: Relative slope stability and land-use planning in the San Francisco Bay region, California. U.S. Geological Survey Professional Paper 944:96p. 1979.
- [30] Saaty T.L. The Analytical Hierarchy Process, Planning Priority, Resource Allocation. RWS Publications, USA. 1980.
- [31] Samani J.M.V., Solimani A. Uncertainty analysis of routed outflow in rock fill dams. J Agric Sci Techn. 2008; 10: 55-66.
- [32] Dutton A.L., Loague K., Wemple B.C. Road sediment production and delivery: Processes and management. Earth Surf Process Landf, 2005; 30:325-38.
- [33] Session J., Wing A., Coulter E.D. Developing a decision support system to improve transportation. Silva Fenn, 2001; 40(1):143-60.
- [34] Dudhani S., Sinha A.K. GIS database management for planning of Hydro Power Generation. In: 6th Annual International Conference and Exhibition, Map India Conference, 2003.
- [35] Naghdi R., Babapour R. Planning evaluating of forest roads network with respect to environmental aspects via GIS application (case study: Shafaroud Forest, northern Iran). Proceeding of Second International Conference on Environmental and Computer Science, Dubai, UAE, 2009, p. 424-427.
- [36] Majnounian B., Abdi E., Darvishsefat A. Planning and technical evaluating of forest road networks from accessibility point of view using GIS (Case study: Namkhane district, Kheyroud forest). Iran J Nat Res, 2007; 60: 907-19.
- [37] Raafatnia N., Abdi O., Shataee S. Determining proper method of preliminary forecasting of mountain and forest roads using GIS. Iran J For Popl Res 2006; 14(3):244-57.
- [38] Kunwoo C. Studies on forest road construction in mountain forest, Kangwon National University. Res Bul Exp

F.1990: 16:109-131.

- [39] Audery MM. Development of environmental routing strategies for the management of forest access roads using GIS and GPS. PhD thesis, National University of Ireland, Dublin, 2001. [74p.](#)
- [40] Backmund F. Indices for the degree of accessibility of forest districts via roads. *ZeitschrFForstw.* [1968](#);119:445-52.
- [41] Mohammadi Samani, K, Hosseiny SA, Lotfalian M, Najafi A. Planning road network in mountain forests using GIS and Analytic Hierarchical Process (AHP). *Caspian J Environ Sci.* 2010;8(2):151-62.
- [42] Kavzoglu T, Şahin E, Çölkese İ. Landslide susceptibility mapping using GIS-based multicriteria decision analysis, support vector machines, and logistic regression. *Landslides.* [2014](#);11:425-439. DOI:10.1007/s10346-013-0391-7.
- [43] Naghdi R, Soleiman M, Babapour, R, Majid A. Designing of forest road network based on technical and economical considerations using GIS-AHP. *Int J Appl Nat Sci.* 2012; 1(2),39-44.
- [44] Hayati E, Abdi E, Majnounian B, Makhdom M. Application of sensitivity analysis in forest road networks planning and assessment. *J Agr Sci Techn.* 2013;15(4):781-792.
- [45] Hayati E, Majnounian B, Abdi E, Session J, Makhdom M. An expert-based approach to forest road network planning by combining Delphi and spatial multi-criteria evaluation. *Environ Monit Assess.* 2013;185:1767-76.