

Seed Morphometry and Different Pre-sowing Treatments on Seed Germination Behaviour of *Spondias pinnata* Linn. under Nursery Conditions

Abstract

The present investigation was carried out during 2018–19 to evaluate the variation in seed dimension and most promising seed pre-treatments for accelerating germination of *Spondias pinnata* Linn. The various pre-sowing treatments were used, namely: the Control (no treatment); soaking in cold water for 24 hours; soaking in cold water for 48 h; soaking in cold water for 72 h; soaking in 100 ppm thiourea for 24 h; soaking in 200 ppm thiourea for 24 h; soaking in 400 ppm thiourea for 24 h; soaking in 800 ppm thiourea for 24 h; soaking in 1000 ppm thiourea for 24 h; soaking in 100 ppm KNO₃ for 12 h; soaking in 200 ppm KNO₃ for 12 h; soaking in 400 ppm KNO₃ for 12 h; soaking in 800 ppm KNO₃ for 12 h and soaking in 1000 ppm KNO₃ for 12 h. The experiment was laid out in randomised block design with 134 pre-sowing treatments and including the control with comprising three replications of having 100 seeds replication⁺. The highest (54.33%) germination percentage was observed from noticed in the cold-water treatment for 48 hrs followed by thiourea 1000 ppm for 24 hrs (50.00%) and potassium nitrate 200 ppm for 12 hrs (48.67%) and statistically superior over the control. All other germination parameters like germination value, mean germination time, root length, shoot length and seedling vigour index were significantly different among all the pre-treatments.

Comment [JW1]: READABILITY

Keywords: *Spondias pinnata*, germination value, seedling vigour index, thiourea

1. Introduction

Minor/ underutilized fruit crops are vital to fulfil the dietary requirement in daily life as a good supplement of major fruit crops because they possess nutritional values [1]. The minor fruit crops also essential for boosting socioeconomic conditions of the rural livelihood [2] but its potentiality and importance are lacking among the people. Among the minor fruit crops, the genus 'Spondias' is a small genus of tropical fast-growing trees [3]. The maximum diversification is found in the Indo-Malaysian region [4] where two indigenous and two exotic species are found in India. *Spondias pinnata* Linn. is one of the promising aromatic deciduous trees [5], locally called as 'amara' (Family: Anacardiaceae) found widely in moist

and dry deciduous forest [6] and sporadically distributed in rural villages throughout India up to 1500 meters. This minor fruit crop plays an important role in northern parts of west Bengal [7] because of its multifarious values. The fruit is ovoid, one-seeded, yellow-skinned when ripe and appreciated for traditional food and medicinal values [8]. The flowers, raw and ripe fruits are eaten as both raw and curry [9]. It is also used as a condiment, pickles, stews, jellies, sauces and chutneys. It is a rich source of different minerals and vitamin C [10]. Its fruit contains crude fat 12.23–12.54%, carbohydrate 16.30–23.54%, sodium 0.96–1.38%, iron 1.3–1.5%, calcium 0.15–0.93% and food energy 189–203 kcal g⁻¹ [11]. The pulp contains sucrose (2.9%), glucose (1.7%), fructose (1.8%), iodine (0.45–0.61 mg kg⁻¹ dry weight), riboflavin (0.02 mg 100g⁻¹), vitamin-C (21 mg 100g⁻¹) and vitamin-A (450 I.U. 100g⁻¹) [12]. The fruit is astringent and antiscorbutic. The bark is useful in dysentery, diarrhoea and prevent vomiting and its paste is used as an embrocation for both articular and muscular rheumatism. Root is useful in regulating menstruation. The gum is employed as an adhesive. The leaf juice is applied in earache. The plant is reported to have anti-tubercular properties [13]. It is highly exploited for food, timber, wood products and other services like shade and boundary barriers. Despite of this importance, lack of domestication is evidenced from great morphological diversity. Its propagation is not sustainable in wild because of the biotic interference and seed borne pathogens [14–16]. If the regeneration and conservation approach will not be carried out which cause irreparable loss of genetic resources leading to extinction. It is conventionally propagated through seeds and little success obtained through vegetative propagation. A few workers/ scientists viz., Dey et al. [7], Dey et al. [17], Dey et al. [18] and Sundriyal and Sundriyal [19] has worked out on the propagation practices of *S. pinnata* and *S. axillaris*, respectively. Though, all necessary conditions for germination are available but the germination is erratic, poor and delayed due to thick seed coat that inhibits water absorption, type of seeds and size in addition to the problem of seed dormancy and longevity.

Considering its importance and demand, it is essential to develop economical methods for mass multiplication and cultivation through seed particularly in culturable wastelands under agroforestry system. Pre-sowing treatments like soaking in cold water, hot water, acid scarification, use of chemicals and growth regulators etc. are necessary to improve uniform and synchronize germination for obtaining large scale of planting materials. Therefore, the present paper was an attempt to study the seed morphometry and the different pre-sowing treatments for enhancing the seed germination.

Formatted: Indent: First line: 0.5"

2. Materials and Methods

2.1 Description of the study site

The experiment was carried out in the Central ~~F~~-forest Nursery, Department of Forestry, Uttar Banga Krishi Viswavidyalaya, Pundibari, West Bengal, ~~in~~ India during 2018–19. The experimental site is located at ~~26^o 23' 45.8" NL, 89^o 23' 16.7" EL~~ and altitude of 43m ~~where the above mean sea level with geographical bearing of 26^o 23' 45.8" N latitude and 89^o 23' 16.7" E longitude. Overall clima climate of the area is sub-tropical humid-in nature. There is a considerable variation in the seasonal and diurnal temperature of the experimental site.~~ The average minimum and maximum temperature varied from 21.84^oC to 33.51^oC with relative humidity ~~varied from 64 to~~ 98%. The annual rainfall ~~of this location range from is~~ 2300 ~~to~~ 2500mm ~~because of~~, ~~which is being received during~~ pre-monsoon and monsoon periods.

2.2 Experimental design and procedure

~~Based on~~ After observing the physiological maturity ~~of fruits~~, fresh fruits were collected from the surrounding areas of the university. The ~~sea~~ ~~the~~ fruits were de-pulped manually to extract seeds and ~~to~~ quantify the content of pulp per fruit in grams. The seeds were ~~then~~ washed in running tap water and dried ~~under in~~ shade at room temperature for ~~2–3~~ days. Seed dimension ~~as viz.~~ length, width and seed weight were recorded as ~~per the~~ ISTA [20] Rules. The experiment was laid out in randomised block design with ~~134~~ pre-sowing treatments ~~and including one~~ control ~~with comprising~~ three replications ~~of having~~ 100 seeds ~~replication~~⁺. The ~~va~~ Various pre-sowing treatments were used for breaking ~~the~~ seed dormancy, ~~namely~~: T₁ - Control (no treatment); T₂ - soaking in cold water for 24 h; T₃ - soaking in cold water for 48 h; T₄ - soaking in cold water for 72 h; T₅ - soaking in 100 ppm thiourea for 24 h; T₆ - soaking in 200 ppm thiourea for 24 h; T₇ - soaking in 400 ppm thiourea for 24 h; T₈ - soaking in 800 ppm thiourea for 24 h; T₉ - soaking in 1000 ppm thiourea for 24 h; T₁₀ - soaking in 100 ppm KNO₃ for 12 h; T₁₁ - soaking in 200 ppm KNO₃ for 12 h; T₁₂ - soaking in 400 ppm KNO₃ for 12 h; T₁₃ - soaking in 800 ppm KNO₃ for 12 h and T₁₄ - soaking in 1000 ppm KNO₃ for 12 h. The seeds were sown in polybags of 5''x7'' ~~with comprising~~ well pulverized soil, FYM and sand in the ratio of 1:1:1. A total of 5,600

Comment [JW2]: Poor described, and the writing is too much inconsistency for reproducibility.

Formatted: Indent: First line: 0.5"

Comment [JW3]: ranged

Comment [JW4]:

Comment [JW5]: Inconsistent.

Comment [JW6]: ?????

Comment [JW7]: How many seeds were measured? One hundred is the minimum to design a box-and-wiskers plot to replace the figure in the text without any title (Figure 1.) Did you measured 300 seeds?

seeds were sown and watering ~~is~~ done regularly to avoid desiccation of the seeds. Weeding was carried out as soon as and when required.

2.3 Method of data collection

Observation on seed germination was recorded from the date of sowing up to 4 weeks and the following parameters were recorded ~~as follows~~: Germination percent (%) = (Number of seeds germinated/ Total number of seeds sown) X 100. Germination value (GV) was calculated as per the method given by Czabator [21]. Mean Germination Time (MGT) was determined according to Dey et al. [18] as given in below $MGT = \sum(\text{Daily Germination} \times \text{Days}) / \text{Number of seed sown}$ (-Un-germinated seeds at the end of the test were given values of n+1, where n is the number of days in the test). After 45 days of seed sowing five seedlings were selected and uprooted randomly from each replication and root length and shoot length was measured by digital Vernier calliper; seedling vigour index (SVI) was calculated as Final Germination Percent (%) X seedling length (cm) as per the method given by Abdul-baki and Anderson [22]. One Way ANOVA for each parameter was performed using statistical tools and mean separation for different treatment under different parameter was performed using Critical difference (CD) test ($P \leq 0.05$). Angular transformation was done following Gomez and Gomez [23].

Formatted: Font: (Default) Times New Roman, 12 pt

Comment [JW8]: ?????

Comment [JW9]: ????

Comment [JW10]: ?????

Comment [JW11]: Readability

Comment [JW12]: ????

Comment [JW13]: Which test? Poor written!

Comment [JW14]: Poor written.

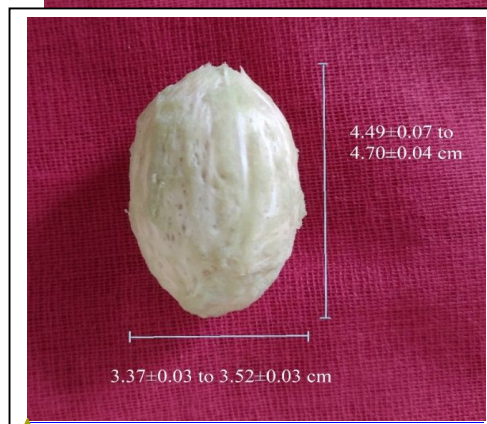
Comment [JW15]: I recommend consulting a native speaker English for the whole text. It is too wordy for publication.

Comment [JW16]: I suggest applying a box-and-whiskers plot.

3. Results and Discussion

3.1 Seed dimension

The fruits of *S. pinnata* were formed in clusters at the distal end of the branches, and their shape were ~~in clusters and~~ oval ~~in shape~~. The fruits were light green ~~in colour~~ at premature stages which turned yellow brown ~~afterwith~~ ripening. The individual seed (Figure 1) length was varied from 4.49 ± 0.06 to 4.70 ± 0.04 cm and width 3.37 ± 0.03 to 3.52 ± 0.03 cm. The individual fruit weight was 27.10 ± 0.50 g which consist of



Formatted: Font: (Default) Times New Roman, 10 pt, Font color: Text 1

Formatted: Centered

17.97±0.67 g pulp and 8.88 ±0.12 g seed weight. The moisture content in the pulp and seed was 77.91 ±0.25% and 60.23± 0.55%, respectively. The number of fruits and seeds per kilogram was 36.95 ±0.66 and 112.74±1.48, respectively. Our results are well in line with similar to studies in *S. pinnata* [16], *Pongamia pinnata* [24], *Azadirachta indica* [25] and *Elaeocarpus serratus* [26]. The variation exhibited in seed and fruit dimensions are may be due to the environmental influences during the development combined with genetic variability [16].

Comment [JW17]: ?????

3.2 Effect of pre-sowing treatments on seed germination parameters behaviour

Seed lots were pre-treated with different pre-treatments to record their effects on germination percentage, germination value and mean germination time. Germination potential of seeds differed significantly due to pre-treatments (Table 1).

Comment [JW18]: ?????

3.2.1 Germination percentage

A general trend of low germination response was found in all pre-treatments. The lowest germination (22%) was observed in control. Seeds soaked in with cold water for 48 h had average highest germination (54.33%) followed by 50.00% in the 1000 ppm of thiourea for 24 h and 48.67% in 200 ppm of KNO₃ for 12 h, respectively. We it was (I) observed that the germination percentage was showed increasing trend from 36.33–50.00% with the increasing concentration of thiourea where seeds were soaked for 24 h. In the treatment of KNO₃ for 12 h, the germination percentage was increased initially from 44.33–48.67% in concentration varied from 100–200 ppm and then showed declining trend gradually up to the concentration of 1000 ppm. It is general phenomenon that wide variation of seed lot showed larger variability in germination due to the variation in seed size. The pre-treatment namely, soaking with cold water for 48 h, 1000 ppm of thiourea for 24 h and 200ppm of KNO₃ for 12 h are likely to facilitate water imbibition through softening hard seed coat and gaseous exchange which ultimately lead to higher percentage of germination. The present results of this study are in close agreement with the findings of Dey [31] and Kumar et al. [27] in

Comment [JW19]: This indicates a short summary as the model to print the report.

Comment [JW20]: ?????

Comment [JW21]:

Gmelina arborea but to some extent contradictory with the result of Dey et al. [7] in *S. pinnata*.

3.2.2 Germination value

Irrespective of the pre-treatments, the germination value was varied from 0.63–3.96. The average maximum germination value (3.96) was notice in the seeds treated with cold water for 48 h followed by seeds soaked with 1000 ppm of thiourea for 24 h and 200 ppm of KNO₃ for 12 h recording the value of 3.35 and 3.14, respectively while the minimum (0.63) was observed in control. The germination value was followed the same pattern as germination percentage. Germination value is an expression of total germination at the end of test period with an expression of germination energy or speed of germination. It gives an idea of the vigour of the seed and of the seedling which it produces [28]. The present study strongly supports this hypothesis as seed sources having higher seed germination also had better germination value. This result is well in line with the findings of Dey [31].

Comment [JW22]: ????

Table 1: Effect of pre-treatments on germination percentage, germination value, mean germination time, shoot length, root length, total seedling length and seedling vigour index of *Spondias pinnata* seeds

Comment [JW23]: ?

Treatments	Germination percentage (%)	Germination Value	Mean germination time (Days)	Shoot length (cm)	Root length (cm)	Total seedling length (cm)	Seedling vigour index
T1-Control	22.00 ^a (27.95)	0.63 ^f	27.09 ^a	13.47 ^f	10.57 ^h	24.04 ^g	529.01 ^g
T2-CW-24h	33.33 ^g (35.26)	1.44 ^e	26.70 ^{abc}	14.24 ^f	12.43 ^{fg}	26.88 ^f	889.72 ^f
T3-CW-48h	54.33 ^a (47.49)	3.96 ^a	25.29 ^b	23.43 ^b	14.46 ^c	37.89 ^c	2059.18 ^a
T4-CW-72h	24.33 ^h (29.55)	0.77 ^f	26.92 ^{ab}	13.64 ^f	11.72 ^g	25.36 ^g	615.91 ^g
T5-Thio-100ppm-24h	36.33 ^f (37.07)	1.73 ^{de}	26.55 ^{abcd}	16.35 ^{de}	14.88 ^{de}	31.22 ^c	1133.89 ^c
T6-Thio-200ppm-24h	40.00 ^e (39.23)	2.13 ^d	26.20 ^{cde}	24.03 ^b	15.38 ^{cde}	39.41 ^b	1575.13 ^c
T7-Thio-400ppm-24h	45.67 ^{cd} (42.51)	2.81 ^c	25.94 ^{efg}	26.99 ^a	16.74 ^b	43.73 ^a	1996.62 ^a
T8-Thio-800ppm-24h	47.67 ^{bc}	3.02 ^{bc}	25.57 ^{efg}	19.60 ^c	18.14 ^a	37.74 ^c	1799.92 ^b

Comment [JW24]: ????

Comment [JW25]:

Comment [JW26]:

Comment [JW27]:

Comment [JW28]:

Comment [JW29]:

Comment [JW30]:

	(43.66)							
T9-Thio-1000ppm-24h	50.00 ^b	3.35 ^b	25.44 ^{sh}	26.81 ^a	16.02 ^{bc}	42.83 ^a	2141.87 ^a	Comment [JW31]:
	(45.00)							
T10-KNO3-100ppm-12h	44.33 ^d	2.66 ^c	25.12 ^b	13.91 ^f	12.97 ^f	26.88 ^f	1191.24 ^{dc}	
	(41.74)							
T11-KNO3-200ppm-12h	48.67 ^b	3.14 ^{bc}	25.74 ^{ef}	19.46 ^c	15.59 ^{cd}	35.05 ^d	1705.38 ^{bc}	
	(44.23)							
T12-KNO3-400ppm-12h	38.67 ^{ef}	1.98 ^d	26.08 ^{def}	19.16 ^c	15.08 ^{de}	34.23 ^d	1324.03 ^d	
	(38.44)							
T13-KNO3-800ppm-12h	38.33 ^{ef}	1.96 ^d	26.04 ^{def}	17.28 ^d	14.62 ^e	31.90 ^e	1221.96 ^{de}	
	(38.25)							
T14-KNO3-1000ppm-12h	36.67 ^f	1.77 ^{de}	26.51 ^{bcd}	15.71 ^e	15.57 ^{cd}	31.28 ^e	1147.43 ^e	
	(37.26)							
SEm±	0.90	0.17	0.19	0.36	0.31	0.46	57.69	Comment [JW32]: ????
CD (p= 0.05)	2.61	0.50	0.56	1.05	0.91	1.35	167.71	Comment [JW33]: ????

*Values in the parenthesis are angular transformed values.

3.2.3 Mean germination time

Significant effects of various pre-treatments for mean germination time (days) among different treatments were observed. Highest average (27.09 days) was observed in control whereas the lowest (25.29 days) was exhibited when seeds soaked with cold water for 48 h followed by 25.44 and 25.74 days was noticed in 1000 ppm of thiourea for 24 h and 200 ppm of KNO₃ for 12 h, respectively. The present findings support the hypothesis that the better germination will take lesser time (MGT) to germinate. This observation could be explained that soaking seeds with cold water for 48 h plays a great role in breaking hard seed coat very early and activity in seed embryo go faster resulting in the utilization of accumulated food material and early germination. Similar results are obtained by Roy et al. [29] in *Pinus roxburghii*, Sherpa [32] in *Michelia champaca* and Dey et al. [30] in *Baccaurea sapida*.

3.3 Growth behaviour of seedlings

Results presented in Table 1 also depict the significant difference among the pre-treatments on shoot length, root length, total seedling length and seedling vigour index.

3.3.1 Shoot length

Comment [JW34]: ??????

Shoot length was showed increasing trend over the control. Among the pre-treatments, seeds soaked in thiourea 400 ppm for 24 h exhibited maximum (26.99 cm) shoot length followed by thiourea 1000 ppm for 24 h (26.81 cm) whereas seeds soaked in cold water for 48 h and KNO₃ of 200 ppm for 12 h showed 23.43 cm and 19.46 cm shoot length, respectively. The minimum (13.47 cm) shoot length was observed in control. It might be due to the cell multiplication and cell elongation in meristematic tissue of the cambium in the internodal region. Similar finding was obtained by Dey et al. [7] in *S. pinnata*.

3.3.2 Root length

Root length ~~was~~ also showed increasing trend, but did not follow any trend among the treatments. seeds soaked in thiourea 800 ppm for 24 h exhibited highest (18.14 cm) root length whereas seeds soaked in KNO₃ 200 ppm for 12 h and cold water for 48 h showed 15.59 cm and 14.46 cm root length, respectively. The lowest (10.57 cm) root length was found in control. It might be due to thiourea and KNO₃ inducing higher production of photosynthates which enhanced the requirement of abundant moisture and nutrients and increased the root length simultaneously. The finding is similar with the findings of Sherpa [32].

Comment [JW35]: Incongruous writing.

3.3.3 Total seedling length

All treatments showed a positive impact on the total seedling length. Overall, total seedling length was improved in treated seed lots on comparison to control; however, seeds treated with thiourea 400 ppm for 24 h were being the maximum seedling length (43.73 cm) followed by thiourea 1000 ppm for 24 h (42.83 cm) whereas total seedling length (37.89 cm and 35.05 cm) was obtained in cold water for 48 h and KNO₃ of 200 ppm for 12 h, respectively while minimum was (24.04 cm) in control. The increased total seedling length, a summation of root length and shoot length in all treatments can be attributed to its peculiarity to increase root and shoot growth by cell enlargement and similar with the findings of Dey et al. [7] in *S. pinnata*.

3.3.4 Seedling vigour index

Seedling vigour index represents the potential level of activity and performance of seed during germination. Seeds treated with thiourea 1000 ppm for 24 h were showed highest (2141.87) seedling vigour index followed by cold water for 48 h (2059.18) which was closely followed by thiourea 400 ppm for 24 h (1996.62) whereas seeds KNO₃ of 200 ppm for 12 h

exhibited 1705.38 seedling vigour index. The lowest (529.01) was observed in control. The response attributed for enhanced germination and seedling growth in thiourea 1000 ppm for 24 h are many such as diffusion of endogenous hormonal substance. These findings are also akin to the findings of Kumar et al. [27] and Dey [31].

4. Conclusion

Individual seed length and width ~~rangevaried~~ from 4.49 ± 0.06 to 4.70 ± 0.04 cm and 3.37 ± 0.03 to 3.52 ± 0.03 cm, respectively. Seeds soaked ~~inwith~~ cold water for 48 hours ~~had the showed~~ highest germination followed by soaking ~~seeds~~ in thiourea 1000 ppm for 24 h in comparison to other pre-treatments. ~~whereas,~~ The seedling vigour index was highest in thiourea 1000 ppm for 24 h. Hence, the above seed pre-treatment can be recommended for ~~commercial propagation by~~ overcoming the physiological dormancy.

7. References

- [1] Hossain MM, Rahim MA, Haque MR. Biochemical properties of some important underutilized minor fruits. *Journal of Agriculture and Food Research* 2021;5:100148.
- [2] Shajib MTI, Kawser M, Miah MN, Begum P, Bhattacharjee L, Hossain A, et al. Nutritional composition of minor indigenous fruits: Cheapest nutritional source for the rural people of Bangladesh. *Food Chemistry* 2013;140:466–70.
- [3] Mitchel J, Daly D. A revision of *Spondias* L. (Anacardiaceae) in the Neotropics *PhytoKeys* 2015;55:1–92.
- [4] Arora RK. Diversity in underutilized plant species: an Asia-Pacific perspective. *Biodiversity international*; 2014.
- [5] Mondal S, Bhar K, Panigrahi N, Mondal P, Nayak S, Barik RP, et al. A Tangy Twist Review on Hog-Plum: *Spondias pinnata* (L.f.) Kurz. *Journal of Natural Remedies* 2021:1–25. <https://doi.org/10.18311/jnr/2021/25405>.
- [6] Sivaprasad M, Policegoudra RS, Swaroop Kumar HM, Aradhya SM. Changes in the biochemical and bioactive constituents of Indian hog plum (*Spondias mangifera* Willd.) fruit during ambient storage. *The Journal of Horticultural Science and Biotechnology* 2011;86:267–76.
- [7] Dey K, Ghosh A, Dey AN, Bhowmick N, Bauri FK. Studies on seed germination and seedling behaviour of Indian hog-plum (*Spondias pinnata*) in response to different pre-sowing treatments. *Seed Science and Technology* 2016;44:642–6.
- [8] Shabana K, Siddiqui HH, Talib H, Hina F. Botanical and phytochemical evaluation of fruits of *spondias pinnata*. *Archives of Applied Science Research* 2015;7:276–80.
- [9] Chadha KL, Patel VB. Prospect of indigenous perennial plants as source of vegetable. In: *International Conference on Indigenous Vegetables and Legumes. Prospectus for Fighting Poverty, Hunger and Malnutrition* 752, 2006, p. 49–54.
- [10] Campbell CW, Sauls JW. *Spondias* in Florida. University of Florida Cooperative Extension Service, In: *Fact Sheet HS-63*; 1994.
- [11] Andola HC, Purohit VK. Evaluation of nutritive and mineral value in ripe fruits of *Spondias pinnata* from two location of Western Himalaya, India. *Med Plants Int J Phytomedicines Relat Ind* 2010;2:233–6.
- [12] Anon. *The Wealth of India: Dictionary of Indian Raw Materials & Industrial Products*. Council of Scientific & Industrial Research (India). CSIR; 1992.
- [13] Bisht C, Badoni A. Distribution and indigenous uses of some medicinal plants in district Uttarkashi, Uttarakhand, India. *Researcher* 2009;1:38–40.
- [14] Purohit VK, Negi V, Phondani PC. Assessment of root formation to stem cutting of *Spondias pinnata* 2008.
- [15] Tripathi M, Kumari N. Micropropagation of a tropical fruit tree *Spondias mangifera* Willd. through direct organogenesis. *Acta Physiologiae Plantarum* 2010;32:1011–5.
- [16] Kumar V. Enhancing Seed Germination and Seedling Growth of *Spondias pinnata* (IF) Kurz.—Potential Pickle Plant. *Environment & Ecology* 2016;34:2023–8.
- [17] Dey K, Ghosh A, Dey AN, Bhowmick N. Efficacy of IAA concentration and cutting length on rooting of stem cuttings in *Spondias pinnata* Linn. *The Horticultural Society of India (Regd)* 2017;74:127–31.
- [18] Dey K, Ghosh A, Dey AN, Bhowmick N, Ghosh A, Bauri FK. Asexual propagation of *Spondias pinnata* Linn. as influenced by cutting length and sucrose concentration. *J Crop Weed* 2021;17:93–7. <https://doi.org/10.22271/09746315.2021.v17.i2.1457>.
- [19] Manju S, Sundriyal RC. Seed germination and response of stem-cuttings to hormonal treatment in six priority wild edible fruit species of Sikkim Himalaya. *Indian Forester* 2001;127:695–706.
- [20] [ISTA](http://www.ista.org). *International rules for seed testing Rules* 1999.
- [21] Czabator FJ. Germination value: an index combining speed and completeness of pine seed germination. *Forest Science* 1962;8:386–96.
- [22] Abdul-Baki AA, Anderson JD. Vigor determination in soybean seed by multiple criteria 1. *Crop Science* 1973;13:630–3.
- [23] Gomez KA, Gomez AA. *Statistical procedures for agricultural research*. John Wiley & Sons; 1984.
- [24] Hooda MS, Dhillon RS, Dhanda S, Kumari S, Dalal V, Jattan M. Genetic divergence studies in plus trees of *Pongamia pinnata* (Karanj). *Indian Forester* 2009;135:1069–80.
- [25] Kaushik N, Kaushik JC, Nautiyal S. Genetic variability and correlation studies for seed morphology, seedling growth and biochemical traits in neem (*Azadirachta indica* A. Juss). *Indian Forester* 2012;138:10–6.
- [26] Kumar V, Ajeesh R, Vidyasagaran K, Babu S. Variation in pulp content and physical characters of *Elaeocarpus serratus* L. Fruits in different landuse patterns of Western Ghats, India. *Ecol. Environ Conserv* 2015;21:1–4.
- [27] Kumar A, Chawhaan PH, Matharoo AK. Improvement through selection of plus trees in *Gmelina arborea*. *Journal of Tropical Forest Science* 2003:441–9.

Comment [JW36]: Ask helping from a Librarian!

- [28] Willan RL. guide to forest seed handling with special reference to the tropics (Chinese ed.). FAO Forestry Paper (Chinese ed) (FAO) eng no 20/2 1985.
- [29] Roy SM, Thapliyal RC, Phartyal SS. Seed source variation in cone, seed and seedling characteristic across the natural distribution of Himalayan low level pine *Pinus roxburghii* sarg. *Silvae Genetica* 2004;53:116–23.
- [30] Dey AN, Panda MR, Sharma B, Ghosh A. Effect of pre-treatments on germination of Latka (*Baccaurea sapida* Muell. Arg.) *International Journal of Minor fruits, Medicinal and Aromatic Plants* 2022; 8(1), 30–34.
- [31] Dey AN. Provenance variation in seed and seedling characteristics of *Gmelina arborea* Linn Roxb. PhD Thesis. Hemwati Nandan Bahuguna Garhwal University, Uttarakhand. 2011.
- [32] Sherpa P. Studies on different presowing treatments and nutrient management for growth behaviour of champa (*Michelia champaca* Linn.) seedlings. PhD Thesis, Uttar Banga Krishi Viswavidyalaya, West Bengal, India. 2021.

UNDER PEER REVIEW