

**Eminent roles of micro-nutrients in quality seed production**

**ABSTRACT**

There are seventeen vital nutrients required for plant growth and development. Out of these essential nutrients the elements needed in trace amounts are known as micro-nutrients. Seed priming and treatment with micronutrients has the potential to meet crop micronutrient demand and improve seedling emergence and stand establishment, grain micronutrient enrichment and yield. Micronutrients may be applied to the soil, foliar sprayed or added as seed treatments or seed priming. While the essential amounts of micronutrients can be provided by any of these methods, foliar sprays have been more successful in yield improvement and seed quality enrichment. Due to high cost has limited its wider adjustment, particularly by wealth poor farmers. Micronutrients may be applied either by coating with micronutrients or by soaking in nutrient solution of a specific concentration for a specific duration (seed priming). The potential micronutrients for seed treatments are Zinc (Zn), Boron (B), Molybdenum (Mo), Manganese (Mn), Copper (Cu) and Cobalt (Co) for improving growth, development, yield and seed quality enrichment. Treated or primed seeds generally have better, faster and more integrated germination. Micronutrient application in seed can also be done through seed coating and pelleting. Seed priming or seed coating seems reasonable, inexpensive and an easy method of micronutrient delivery mostly by small land holders in developing countries.

**Keywords:** Field performance, germination, micro nutrient, nutri-priming, vigour

**Introduction**

In crop plants, there are 17 essential elements that are required for proper growth and development. Macronutrients are minerals that are required in high amounts and when required in very low amounts they are known as micronutrients. Although micronutrients are required in smaller amounts, they are required for optimum plant growth and their deficiency may cause growth suppression and to the extent of complete inhibition (Mengel *et al.*, 2001). Micronutrients have several vital functions in plants such as co-factor in enzyme systems and part in redox reactions. They also have a key role in various physiological processes like respiration and photosynthesis (Marschner, 1995; Mengel *et al.*, 2001). Deficiency of micronutrients can halt various physiological processes which in turn will limit the grain yield. In case of wheat (Rerkasem and Jamjod, 2004), chickpea (Johnson *et al.*, 2005) and lentil (Srivastava *et al.*, 2000) yield will be decrease due to Boron (B) deficiency. In Asian countries Zinc deficiency limits the yield of rice (Rehman *et al.*, 2013).

In the developing world mineral deficiency in grains for human consumption results into a major health hazard - 'Hidden Hunger' (Buyckx, 1993; Ramalingaswami, 1995). Zinc nutrition helps in providing immunity (Shankar and Prasad, 1998) and improving resistance against

diarrhea (Black, 1998; Fuchs, 1998) and its deficiency will cause immunity loss, **poor injury healing** and skin disease like dermatitis (van Campen, 1991).

To increase yield where soil micronutrients supply is not adequate several methods are adopted to improve the plant micronutrient status. But application of fertilizer to soils requires higher dose because of **little nutrient-use efficiency** (Singh, 2007). Micronutrients can also be applied through seed treatment (priming) or foliar sprays. It has been seen that foliar sprays are most effective in seed enrichment and improving the yield (**Biswas *et al.*, 2021; Ray Bordolui, 2020; Biswas *et al.*, 2020**). Because of the high cost of foliar sprays poor farmers with less resource cannot adopt it widely (Johnson *et al.*, 2005). Another issue with foliar sprays is that it is applied to established crop stand at later stage. So from economical perspective seed treatment is a better option as smaller quantity of micronutrient is needed, easy application and seedling growth is also improved (Singh *et al.*, 2003).

**Seeds treatment with micronutrients can be done in different ways according to needs.** They can be either soaked in the nutrient solution of different concentrations and different time durations depending upon nutrient and the crop. They can also be coated with micronutrient. Seed invigoration is a relatively new term in seed treatment where reciprocally used for both methods of seed treatment (Farooq *et al.*, 2009; Chakraborty and Bordolui 2021; Ray and Bordolui, 2022).

The main objectives to get appropriate nutripriming technologies, identifying suitable nutrients for nutripriming, ways and means for better seed germination, better crop stand, supplying nutrients and ultimately ways to fight malnutrition in developing countries.

### **Seed priming with micronutrients**

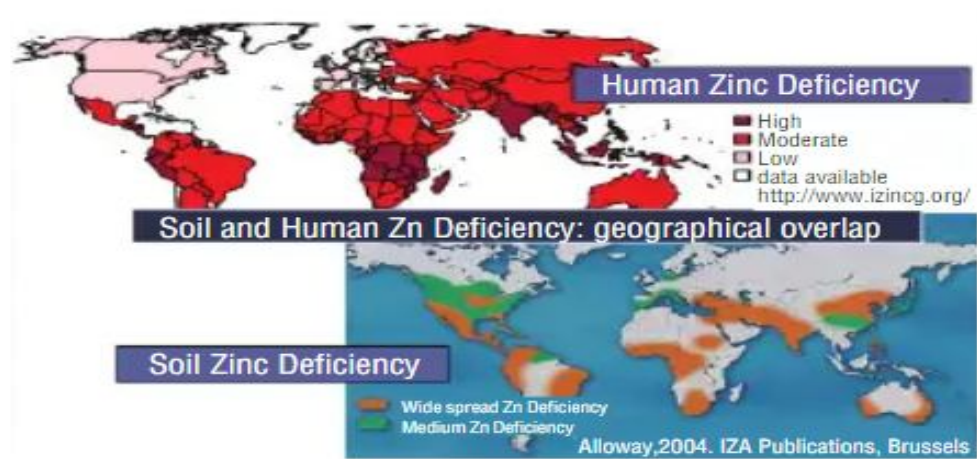
The method of seed priming involves 2 steps. First they are hydrated partially so that different metabolic events can take place without germinating. **In the next step seeds are again dried to their initial weight for routine handling (Bradford 1986).** The germination speed is higher in case of primed seeds in relation to unprimed seeds (Farooq *et al.*, 2006, 2009). **Seed priming with micronutrients is known as nutri-priming, where micronutrients act as osmotica (Imran *et al.*, 2004; Singh 2007).** Primed seeds appear superior and consistent germination (Farooq *et al.*, 2009) because of less imbibition time (Brock-lehurst and Dearman, 2008; McDonald, 2000; Taylor *et al.*, 1998) and obtainability of **germination increasing metabolites (Basra *et al.*, 2005; Farooq *et al.*, 2006).**

There are **some reveals** which indicate that nutripriming can improve wheat (Marcar and Graham, 1986; Wilhelm *et al.*, 1988), rice (Peeran and Natanasabapathy, 1980) and forage legumes (Sherrell 1984) yield. Although some reports showed that if seed priming is done with higher nutrient concentration, it can result into germination inhibition and seed damage.

### **Discussions of nutripriming by using Zn, B, Mo, Mn, Cu and Co.**

#### **Zinc:**

Solubility and uptake of Zinc is dependent upon various soil factors. For example, higher soil pH reduces Zn solubility and its uptake by plants. In many crops high content of soil Phosphorus (P) results into Zn deficiency (Chang, 1999; Foth and Ellis, 1997). In Zn-deficient soil small brown spots on leaves and reduced growth can be seen in Rice and Maize (Marschner, 1995; Sharma, 2006). Rosette like appearance with profuse shoot tips symptom is seen in Zn-deficient fruit tress (Marschner, 1995). In Zn-deficient citrus trees Interveinal leaf chlorosis and leaf mottling has been reported.



Source: Doctor Ismail Cakmak.

**Fig 1 Geographical overlap for soil and human Zn deficiency**

Plant emergence, stand establishment, further growth and yield can be improved by seed priming with Zn. Germination and field emergence increased by 38 and 41%, respectively in when seeds were primed with 0.05%  $ZnSO_4$  solution, (Babaeva *et al.*, 1999). Zn-seed priming also improved yield and related traits of common bean (*Phaseolus vulgaris* L.) (Kaya *et al.*, 2007). Kaya found that in Barley (*Hordeum vulgare* L.) germination and seedling development can be improved by Zn-seed priming (Kaya *et al.*, 2007). During seed development Zinc content in newly developed radicles and coleoptiles are higher, which indicates that Zinc is involved in early seedling development, their physiological processes and possibly protein synthesis, cell elongation, various membrane function and resistance to abiotic stresses (Cakmak, 2000). Higher Zinc content in seed might be helpful in protection of soil-borne pathogens during germination and seed development stage which in turn ensures a good crop stand (Marschner, 1995) and a better yield. Dry matter accumulation, enhanced mineral uptake, better water uses efficiency (44%) in drought stressed barley was achieved by seed priming (Ajouri *et al.*, 2004). Ullah *et al.* (2002) reported that when seeds were soaked in 0.5 M  $ZnSO_4$  it gave better results than unsoaked, water soaked,  $FeSO_4$  soaked and  $MnSO_4$  soaked seeds in mustard (*Brassica carinata* L.). Significantly better results were achieved in terms of % field emergence, fresh weight and dry weight of seedling, root length and shoot length.

By comparing Zinc ( $ZnSO_4$  (0.4%) seed primed and non-primed seed it has been observed that the Zinc requirement of wheat can be entirely met and also higher yield (21%). Seed priming was also beneficial compared with soil application as benefit: cost ratio was 8 in soil application and 360 in seed priming (Harris *et al.*, 2005). The suitable concentration may vary from crop to crop. For example, in chickpea primed with  $ZnSO_4$  (0.05%) was most effective in terms of yield with an average value of 48% and also benefit: cost ratio of 1500 (Harris *et al.*, 2005). Harris and team also found that priming seeds with  $ZnSO_4$  (1%) solution for sixteen hours crop yield, grain yield, grain zinc content of maize. Primed seeds showed 27% higher yield in comparison to non-primed seeds. It should also be noted that the primed seeds gave better benefit: cost value compared to soil application (Harris *et al.*, 2007). In 2008 the same team found that seed priming with Zn (0.3%) can increase wheat yield by 14%. 19% yield increase in chickpea was achieved by seed priming with 0.05% Zn. Zinc seed priming also increased zinc content of grain by 12% and 29% in wheat and chickpea, respectively (Harris *et al.*, 2008). In

rice also seed treatment was better and more economically viable than soil application and no application. Slaton and others found that Zinc seed treatment in rice improved growth and grain yield (Slaton *et al.*, 2001). There was another experiment where higher wheat grain yield was achieved by seed priming with Zn rather than foliar and soil application when it cultivated on Zn-deficient soil. Although, grain Zn concentration was not affected by seed priming in contrast to soil and foliar application (Yilmaz *et al.*, 1997, 1998). Zn was adhered to the wheat seeds by using Arabic gum by using zinc sulfate ( $ZnSO_4 \cdot 7H_2O$ ) as a source. Control was sown with untreated dry seeds. Results showed that Zn seed treatments improved field emergence, seed priming with Zn (0.01 M) solution gave maximum numbers of seedlings. Grain yield, biological yield, and other yield related characteristic improved by seed osmo-primed with Zn (0.01 M) solution. Zn enrichment in grain and straw were also increased in seed osmo-primed with Zn (0.01 M) solution (Hasan *et al.*, 2019).

**Table 1: Effect of seed treatments with Zinc on grain yield and grain enrichment in different crops**

Seed treating material	Mode of application	Dose and duration	Crop	Increase in grain yield over control	Increase in Zn grain contents over control	References
Zinc Sulphate	Seed Priming	0.1 M 12h	Wheat	5.42	-	Nazir <i>et al.</i> , 2000
Zinc Sulphate	Seed Priming	1 g kg <sup>-1</sup> seed	Rice	14.57	-	Slaton <i>et al.</i> , 2001
Zinc Sulphate	Seed Priming	2.2 g kg <sup>-1</sup> seed	Rice	17.92	-	Slaton <i>et al.</i> , 2001
Zinc Sulphate	Seed Priming	4.7 g kg <sup>-1</sup> seed	Rice	28.25	-	Slaton <i>et al.</i> , 2001
Zn-EDTA	Seed priming	1.4g/kg seed	Rice	20.73	-	Slaton <i>et al.</i> , 2001
Zn-EDTA	Seed priming	2.8g/kg seed	Rice	26.50	-	Slaton <i>et al.</i> , 2001
Zn-EDTA	Seed priming	5.7g/kg seed	Rice	20.45	-	Slaton <i>et al.</i> , 2001
Zinc Sulphate	Seed Priming	10 mg/kg	Barley	-	708	Ajouri <i>et al.</i> , 2004
Zinc Sulphate	Seed Priming	0.004 M 8h	Chickpea	-	1066	Johnson <i>et al.</i> , 2005
Zinc	Seed	0.004 M 12h	Lentil	-	1160	Johnson <i>et al.</i>

Sulphate	Priming					<i>al.</i> , 2005
Zinc Sulphate	Seed Priming	0.004 M 36h	Rice	-	580	Johnson <i>et al.</i> , 2005
Zinc Sulphate	Seed Priming	0.004 M 12h	Wheat	-	900	Johnson <i>et al.</i> , 2005
Zinc Sulphate	Seed Priming	0.05% Zn	Chickpea	36	-	Arif <i>et al.</i> , 2007
Zinc Sulphate	Seed Priming	0.075% Zn	Chickpea	0.5	-	Arif <i>et al.</i> , 2007
Zinc Sulphate	Seed Priming	0.1% Zn	Wheat	34.87	-	Arif <i>et al.</i> , 2007
Zinc Sulphate	Seed Priming	0.2% Zn	Wheat	16.22	-	Arif <i>et al.</i> , 2007
Zinc Sulphate	Seed Priming	0.3% Zn	Wheat	26.58	-	Arif <i>et al.</i> , 2007
Zinc Sulphate	Seed Priming	0.4% Zn	Wheat	27.83	-	Arif <i>et al.</i> , 2007
Zinc Sulphate	Seed Priming	0.3% Zn, 10h	Wheat	17.05	-	Harris <i>et al.</i> , 2007
Zinc Sulphate	Seed Priming	0.05% Zn 6h	Chickpea	17.70	-	Harris <i>et al.</i> , 2007
Zinc Sulphate	Seed Priming	1% Zn 16h	Maize	27.10	-	Harris <i>et al.</i> , 2007
Zinc Sulphate	Seed Priming	0.3% Zn, 10h	Wheat	14	12	Harris <i>et al.</i> , 2008
Zinc Sulphate	Seed Priming	0.05% Zn 10h	Chickpea	19	29	Harris <i>et al.</i> , 2008
ZnO coated Urea	Seed Coating	0.5% (w/w)	Rice	19.1	4.38	Shivay <i>et al.</i> , 2008
ZnO coated Urea	Seed Coating	1% (w/w)	Rice	10.63	16.50	Shivay <i>et al.</i> , 2008
ZnO coated	Seed Coating	1.5% (w/w)	Rice	18.48	30.98	Shivay <i>et al.</i> , 2008

Urea						
ZnO coated Urea	Seed Coating	2%(w/w)	Rice	27.59	40.07	Shivay <i>et al.</i> , 2008
ZnSO <sub>4</sub> coated Urea	Seed Coating	0.5%(w/w)	Rice	6.84	12.79	Shivay <i>et al.</i> , 2008
ZnSO <sub>4</sub> coated Urea	Seed Coating	1%(w/w)	Rice	13.16	27.61	Shivay <i>et al.</i> , 2008
ZnSO <sub>4</sub> coated Urea	Seed Coating	1.5%(w/w)	Rice	20.25	36.03	Shivay <i>et al.</i> , 2008
ZnSO <sub>4</sub> coated Urea	Seed Coating	2%(w/w)	Rice	29.62	48.15	Shivay <i>et al.</i> , 2008
Zinc Sulphate	Seed Coating	250 mg kg <sup>-1</sup> seed	Cowpea	32.10	-	Masuthi <i>et al.</i> , 2009

Papaya (*Carica papaya* L.) stand establishment and growth was improved by soaking the seeds with 0.50% borax (Deb *et al.*, 2010). Seeds soaked in Zn (ZnSO<sub>4</sub>) for 12 hours improved germination of *Chlorophytum borivilianum* (L.) (Kaur *et al.*, 2009). Kang and Okoro reported that seed soaking with Zn-EDTA and fritted Zn improved can improve yield and uptake of Zn, although their efficiency is different (Kang and Okoro, 1976). Another study revealed that stand establishment was increased by 29% when seeds were treated with ZnSO<sub>4</sub> (0.1%) for 24 h (Foti *et al.*, 2008).

Rice, wheat, chickpea and lentil seeds primed with Zn had no effect on grain yield in a two year trial conducted by Johnson *et al.* (2005). They also reported that in the first year chickpea seeds primed with Zn failed to emerge and resulted in a crop failure. In the second year although seeds germinated but there was no yield gain. It should be also noted that Zinc solution priming increased the grain Zn content in all the tested crops (Johnson *et al.*, 2005). They suggested that there is a risk involved in micronutrient priming. So to minimize the risk micronutrient seed priming should be first optimized by doing them in laboratory and then field test for germination. Based on the results whole batch should be primed (Johnson *et al.*, 2005).

Several studies have shown that crop Zinc requirement may not be fulfilled by seed priming with Zn. Like Rasmussen and Boawn in 1969 showed that Kidney beans Zn requirements were not fulfilled by Zn seed priming. It should be also noted that it depends on soil Zn content level, in severe Zn deficiency seed priming was not alone sufficient to meet the crop Zn requirement (Rasmussen and Boawn, 1969; Rehman *et al.*, 2013). But in case of moderate Zn deficiency a cost effective method of Zn application is seed priming application (Harris *et al.*, 2007, 2008; Slaton *et al.*, 2001).

## **Boron**

Boron deficiency leads to disturbances in various metabolic processes like metabolism of carbohydrate, protein, nucleic acid and indole acetic acid, cell wall synthesis membrane integrity and function, phenol metabolism. This in turn results into reduction in crop yield (Dell and Huang, 1997; Tanaka and Fujiwar, 2008). Boron is also part of other processes like flowering and fruiting, cell division, calcium utilization, water relations, disease resistance, carbohydrate and nitrogen metabolism and catalyst of several other reactions (Sprague, 1951).

There are some symptoms through which B deficiency can be identified in crop plants. Like interruption of flowering and fruiting (Ho, 1999) and reduced yields, with discolored or deformed fruit or grain (Shorrocks, 1997). Deficiency symptoms are also different among species. ‘Hollow Heart’ symptom (empty seeds) can be seen in soybean (*Glycine max* L.) or groundnut (*Arachis hypogaea* L.) in black gram (*Vigna mungo* L.) symptoms are not visible in seeds but reduction of grain yield can be upto 50% (Keerati-Kasikorn *et al.*, 1987).



**Fig 2:** Boron deficiency symptom of maize (cv. NS72) grown in sand culture without added B at anthesis showing: white stripes or transparent streaks on leaf lamina (a), multiple ears (b, c) and short silks (e: arrow, removed husk) compared with normal ear of B20 (d, f : ear after removal of husk) Lordkaew *et al.* (2010).

When priming is done with B the most critical factor is concentration of the priming solution. Shorrocks in 1997 shown that various concentrations of B ranging from 2-20 mM had both increased and decreased the effect on germination in crops like turnip (*Brassica rapa* L.), sunflower (*Helianthus annuus* L.), soybean, sugar beet (*Beta vulgaris* L.), alfalfa (*Medicago sativa* L.), wheat and barley (Shorrocks, 1997). Seed priming on the aforesaid crops with 0.5% B solution led to non-emergence of seedlings altogether. Same can be observed with rice seeds primed with 0.5% B solution but when rice seeds were primed with 0.001% and 0.01% B solution improved crop stand was observed (Rehman *et al.*, 2013). In a similar study fine-grain aromatic rice cultivars ‘Super Basmati’ and ‘Shaheen Basmati’ seeds were primed in aerated B (0.001, 0.01, 0.1 and 0.5%) solutions and it was observed that 0.001 and 0.01% solutions showed better crop stand and the rest two concentrations 0.1 and 0.5% suppressed the growth (Farooq *et al.*, 2011). Interestingly papaya seeds soaked in 2 mg L<sup>-1</sup> B solution for 6 h showed better germination rate and speedy seedling development (Deb *et al.*, 2010).

When oats (*Avena sativa* L.) seeds were primed with 0.02% solution of H<sub>3</sub>BO<sub>3</sub> tillering, panicle length and grain weight showed substantial improvement and 8.42% grain yield increase over control seeds but did not show any significant effect on seed germination (Saric and Saciragic, 1969). Similarly, when rice seeds were primed with 0.001% B solution, marked

upgrade was seen in rates of leaf initiation, leaf extension and tiller emergence (Rehman *et al.*, 2013). B seeds priming can show profound influence even in advanced growth stages of plants. For example, pea (*Pisum sativum* L.) seeds primed in B (0.5%) solution showed higher plant height, fruiting and pod yield and a reduction in days to 50% flowering (Kumar *et al.*, 2008).

Yield of chickpea, lentil, rice or wheat was not affected by priming with Boron but grain boron content rose in all crops tested (Johnson *et al.*, 2005). In contrast B application through seed treatment was effective and economical in seed yield increase (10.53%) in pigeon pea compared to soil application (5.26%) and control (Malla *et al.*, 2007).

In various reports it has been concluded that seed priming with B is most effective and economical way of B application. But the solution concentration is of utmost importance and it must be tested and standardized before application in the field.

**Table 2: Effect of seed treatment with boron on grain yield and grain enrichment in different crops**

Seed treating material	Mode of application	Dose and duration	Crop	Increase in grain yield over control	Increase in B grain contents over control	References
Boric Acid	Seed Soaking	0.02%,24h	Oat	8.42	-	Saric and Scragic (1969)
Boric Acid	Seed Priming	0.008M,8h	Chick Pea	-	900	Johnson <i>et al.</i> (2005)
Boric Acid	Seed Priming	0.008M,12h	Lentil	-	1566	Johnson <i>et al.</i> (2005)
Boric Acid	Seed Priming	0.008M,36h	Rice	-	700	Johnson <i>et al.</i> (2005)
Boric Acid	Seed Priming	0.008M,12h	Wheat	-	2122	Johnson <i>et al.</i> (2005)
Borax	Seed Coating	100mg kg <sup>-1</sup> Seed	Cowpea	37.25	-	Masuthi <i>et al.</i> (2009)

### ***Molybdenum***

For nitrogen nutrition and assimilation Molybdenum is the most important micronutrient in plants. Mo helps to use nitrates taken up from soil in non-legume plants. If plants have insufficient Mo then nitrates start getting accumulated in leaves and don't get assimilated into proteins. And not just non-legumes, Molybdenum helps legume crops by helping root nodule bacteria to fix atmospheric nitrogen (Campo *et al.*, 2000). So, Mo and N deficiency symptoms are often identical. In legumes, Mo deficiency can lead into N deficiency because nitrogen-fixing

ability of soil microorganisms is severely damaged. Some examples of Mo deficiency are ‘Yellow-spot’ in citrus, ‘Blue-chaff’ in oats and ‘whiptail’ in cauliflower (Chang, 1999).

For Mo application seed treatment has effect than soil application by several studies (Donald and Spencer, 1951; Johansen *et al.*, 2006a and 2006b). For example, Johansen and his team through 48 trials in Eastern India showed that seed priming with Mo increased yield by 17-22% compared with the control and 20-25% when it was applied in the soil (Johansen *et al.*, 2006a). Similarly, Malla *et al.* (2007) reported that Mo application through seed treatment (4 g kg<sup>-1</sup> seed) and soil application (1.5 kg ha<sup>-1</sup>) increased seed yield by 15.79% and 10.53% respectively. In improving growth and yield of subterranean clover (*Trifolium subterraneum* L.), seeds was priming with in 0.1 or 1% sodium molybdate solution and seeds shown equal effect as soil application in a Mo-deficient soil. At application levels in far more than the necessities for optimum yield, seed priming resulted in higher Mo and N contents in grains than equivalent soil applications (Donald and Spencer, 1951). Improved dry matter accumulation, nodulation, nitrogen fixation and yield were achieved through priming common bean seeds in sodium molybdate (Table 3; Mohandas, 1985). In an exceedingly chick pea pot study compared to Mo soil application 27% yield increase was achieved through seed priming with Mo (0.5 g L<sup>-1</sup> solution of sodium molybdite) for 8 h (Kumar Rao *et al.*, 2004). However, in a very field study yield increase of 20 it had been achieved with the identical treatment in chick pea (Khanal *et al.*, 2005).

The ability of seed priming enhanced by Mo rhizobium can be added to the priming solution. For example, in Bangladesh 37%-90% yield increase over control and upto 50% more than hydro-priming as control (Johansen *et al.*, 2006b). Similarly in green gram (*Vigna radiata* L.) sodium molybdate + rhizobia seed priming showed increased nodulation, nutrient uptake, nitrogen fixation, plant growth and crop yield. It also increased fertilizer application efficiency showing better uses of resources (Pattanayak *et al.*, 2000). The protocol of incorporation of rhizobial strains with priming media must further fine-tuned and for various crops and micronutrient requirements.

In a summarized manner we are able to say that as compared to soil application seed priming is more pragmatic, effective and economical in fulfilling Mo requirements of crops but its incorporation with rhizobia needs more research and fine -tune.

**Table 3 : Influence over Molybdenum seed treatments on grain yield and grain enrichment in different crops**

Seed treating material	Mode of application	Dose and duration	Crop	Increase in grain yield over control (%)	Increase in nodule number over control (%)	Increase in grain mineral content over control (%)	Reference
Sodium Molybdate	Seed Soaking	1mg L <sup>-1</sup> , 1h	Common Bean	12.66	122.73	-	Mohandas (1985)

Sodium Molybdate	Seed Soaking	2mgL <sup>-1</sup> , 1h	Common Bean	53.68	272.73	-	Mohandas (1985)
Sodium Molybdate	Seed Soaking	5mgL <sup>-1</sup> , 1h	Common Bean	11.61	90.91	-	Mohandas (1985)
Sodium Molybdate	Seed Priming	0.0026M, 8h	Chick Pea	-	-	7400	Johnson <i>et al.</i> (2005)
Sodium Molybdate	Seed Priming	0.0026M, 12h	Lentil	-	-	0	Johnson <i>et al.</i> (2005)

### Manganese

Manganese is required for photosynthesis, nitrogen and other metabolisms in plant (Stout and Arnon, 1939). Interveinal chlorosis is the most common symptom of Mn deficiency in plants. In some other species maturity is delayed (Park *et al.*, 1999). Premature leaf shedding and Brown necrotic spots can be seen under acute Mn deficiency conditions. In case of cereal leaves white and grey spots are signs of Mn deficiency (Stout and Arnon, 1939; Chang, 1999).

When wheat seeds were primed with MnSO<sub>4</sub> solutions it showed improved growth, grain Mn contents and grain yield. Another observation was that with increasing priming solution concentration upto 0.2% MnSO<sub>4</sub> solution for 12h grain yield and grain Mn content increased linearly (Khalid and Malik, 1982). Similar results of wheat seed priming with MnSO<sub>4</sub> has been obtained from other studies also (Marcar and Graham, 1986). Mn seed priming can also increase stand establishment. In another report when seeds of *Echinacea purpurea* (L.), were primed with 0.1% MnSO<sub>4</sub> solution germination rate and field emergence increased by 36% and 27% respectively over control (Babaeva *et al.*, 1999). Manganese seed priming observed substantial development in stand initiation, development, yield, and grain improvement, compared with soil application (Khalid and Malik, 1982; Marcar and Graham, 1986; Babaeva *et al.*, 1999).

**Table 4 : Influence over Manganese seed treatments on grain yield and grain enrichment in different crops**

Seed treating material	Mode of application	Dose and duration	Crop	Increase in grain yield over control (%)	Increase in nodule number over control (%)	Increase in grain mineral content over control (%)	Reference
Manganese Sulphate	Seed Priming	0.1M, 12h	Wheat	12.79	-	-	Nazir <i>et al.</i> (2000)

### Copper

Copper is a vital micronutrient responsible for nitrogen metabolism and carbon assimilation. Deficiency of copper results in severe growth retardation. Cu also provides cell wall strength and prevents wilting because it is involved in lignin biosynthesis (Taiz and Zeiger, 2010). Some common symptoms of Cu deficiency are stunted growth, leaf chlorosis and stem and twig die-back (Stout and Arnon, 1939; Chang, 1999; Osotsapar, 1999).

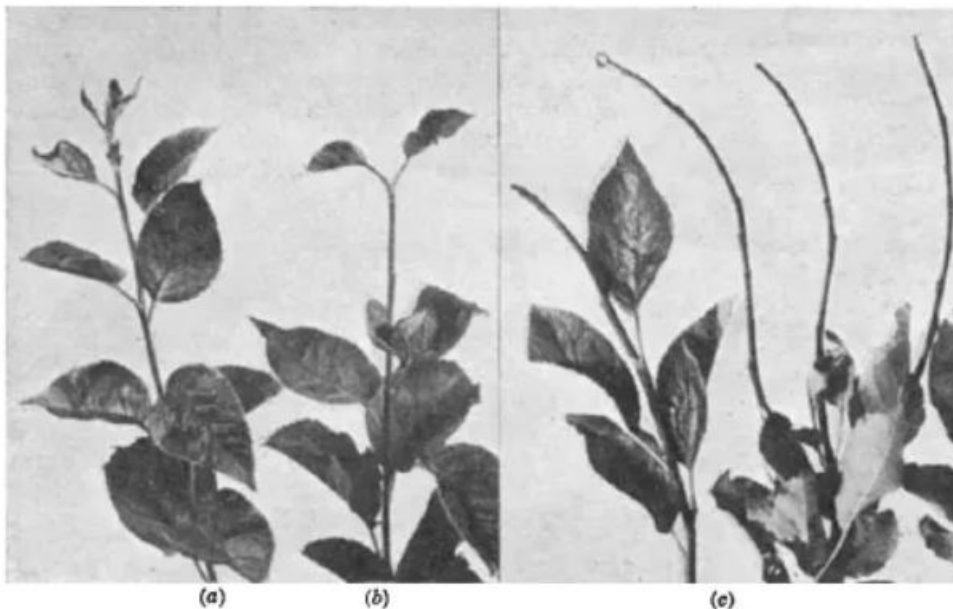


Fig 3: (a) Copper deficiency symptom of apple i.e. growth restriction and necrosis of leaflets near tip, (b) Onset of defoliation of young leaves (c) Basipetal defoliation and dieback of shoots (Bould *et al.*, 1950).

Malhi in 2009 showed that wheat seeds primed in CuEDTA solution (0.04 to 0.16 kg Cu ha<sup>-1</sup>) suppressed seedling emergence but increased grain yield. But very low concentration i.e. 0.04 kg Cu ha<sup>-1</sup> did not significantly enhance the seed yield (Malhi, 2009). There was effect on germination in oats seeds when these were primed with 0.001% solution of CuSO<sub>4</sub> but yield increased by 16.53% compared to untreated control because number of grains panicle<sup>-1</sup> and test weight increased (Saric and Saciragic, 1969). Moreover in a study by Foti *et al.* (2008) observed 43% higher stand establishment in comparison to control when seeds were primed with copper sulphate (0.1%) for 24 h.

Table 5 : Influence of seed treatments with copper on grain yield and grain enrichment in different crops

Seed treating material	Mode of application	Dose and duration	Crop	Increase in grain yield over control (%)	Reference
Copper Sulphate	Seed Soaking	0.001%, 24h	Oat	16.53	Saric and Saciragic (1969)
Copper	Seed	0.1M, 12h	Wheat	12.79	Nazir <i>et al.</i> (2000)

Sulphate	Priming				
----------	---------	--	--	--	--

### Cobalt

In some plants cobalt is beneficial and in some they are essential. Legumes need Co for nitrogen fixation and it has effects on metabolism and plant growth. It is beneficial in retardation of leaf senescence, inhibition of ethylene biosynthesis, and trigger alkaloid biosynthesis. But it is as essential element of several enzymes and co-enzymes (Palit *et al.*, 1994).

In pigeon pea (*Cajanus cajan* L.) grain yield, plant height, branch and leaf numbers, dry matter accumulation was substantially increased by seed priming with cobalt nitrate (Raj, 1987). Similarly, growth, pod yield, shelling percentage, seed weight and harvest index of peanut significantly increased by seed priming with cobalt nitrate (Raj, 1987). The leghemoglobin content and nodule density saw an increase in both pigeon pea and peanut (Raj, 1987). By priming seeds of summer squash (*Cucurbita pepo* L.) with cobalt sulfate it was concluded that dry matter accumulation, femaleness and fruit yield increases in seed primed crops compared to water-soaked seeds (Atta-Aly, 1998). It absolutely was also derived that  $\text{CoSO}_4$  primed seeds started endogenous ethylene synthesis at fourteen days after sowing, and it continued upto flower initiation stage (i.e 30 DAS). Seeds soaked in different concentration of  $\text{CoSO}_4$  i.e. 1.00 ppm, 0.50 ppm and 0.25 ppm produced 56, 40, and 26% more fruit yield, respectively, than the control (Atta-Aly, 1998). Common bean seeds primed with cobalt nitrite at  $1 \text{ mg L}^{-1}$  and  $5 \text{ mg L}^{-1}$  observed significant increase nodulation, dry matter, nitrogen and grain yield (Mohandas, 1985). Panicle length, number of grains panicle<sup>-1</sup> and test weight increased leading to 11.17% yield increase over untreated control in oat seed after priming but it did not have any effect on germination (Saric and Saciragic, 1969).

**Table 6: Influence of cobalt seed treatments on grain yields and grain enrichment in different crops**

Seed treating material	Mode of application	Dose and duration	Crop	Increase in economic yield over control (%)	Increase in nodule number over control (%)	Reference
Cobalt Sulphate	Seed Soaking	0.001% solution, 1h	Oat	11.17	-	Saric and Saciragic (1969)
Cobalt Nitrate	Seed Soaking	1 mg/L, 1h	Common Bean	52.50	334.09	Mohandas (1985)
Cobalt Nitrate	Seed Soaking	2 mg/L, 1h	Common Bean	5.04	147.73	Mohandas (1985)
Cobalt Sulphate	Seed Soaking	0.25 mg/L, 1h	Summer Squash	26.42	-	Atta-Aly (1998)
Cobalt	Seed	0.50	Summer	40.45	-	Atta-Aly

Sulphate	Soaking	mg/L,48h	Squash			(1998)
Cobalt Sulphate	Seed Soaking	1 mg/L,48h	Summer Squash	53.73	-	Atta-Aly (1998)

Use of combination of micronutrients in seed priming like  $0.16 \text{ mg g}^{-1}$  Mo as sodium molybdate and  $0.008 \text{ mg g}^{-1}$  Cobalt as cobalt chloride along with rhizobium shown promising results in significantly improving plant growth, N fixation, nodulation, nutrient uptake and yield. It also aids in better use of resources by making fertilizer application more efficient (Pattanayak *et al.*, 2000). Cobalt seed priming with specific concentrations and specific duration can effectively increase plant performance but more studies are needed in these areas.

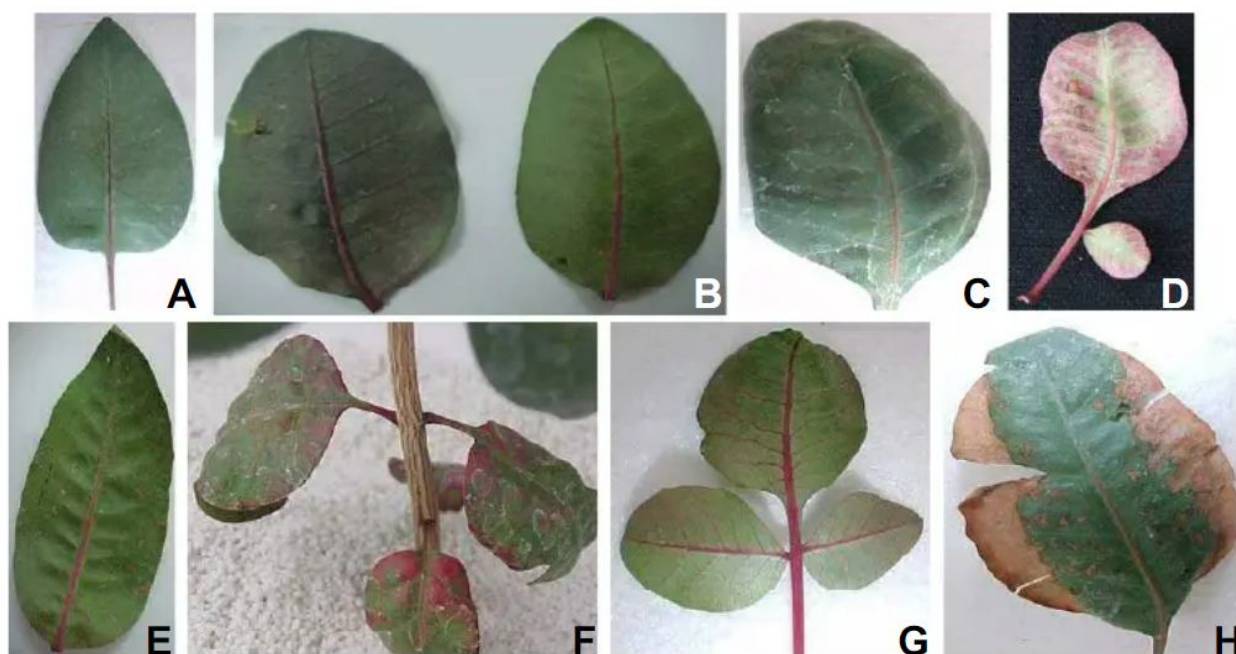


Fig 3(b): Macronutrient and micronutrient deficiency symptom of pistachio leaves. (A) Normal leaf; (B) Mo-deficiency; (C) Mg-deficiency; (D) N-deficiency; (E) Mn-deficiency; (F) N-deficiency; (G) Mn-deficiency; (H) Fe-deficiency. Source- Afrousheh *et al.* (2007).

### Chlorine

Chlorine which is found in the plant as  $\text{Cl}^-$  ion in plants is required for oxygen production. It helps in water splitting reaction of photosynthesis (Clarke and Eaton-Rye 1999). In leaves and roots it is required for cell division. There are number of symptoms that are seen in plants in case of chlorine deficiency. For example, leaf tip wilting, leaf chlorosis and necrosis, reduced growth. Also leaves may show bronze type colour which is called bronzing. Roots remain stunted and thickened near the root tips. Chlorine has many important functions like maintenance of transmembrane electrical neutrality and as a principal osmotically active solute in the vacuole. In most cases plants take up more chlorine in excess of their optimum requirement (Hopkins and Huner 2008).

**Table 7: Influence over Chlorine seed treatments in different crops**

Seed treating material	Mode of application	Dose and duration	Crop	Effects on primed seeds	Reference
NaCl	Seed priming		<i>Marsdenia tenacissima</i>	Improved germination and germination percentage	Xiao <i>et al.</i> (2015)
NaCl	Seed priming	2, 3, 4%	Cotton	Better germination rates, radicle length, hypocotyl length and seedling length in cold and warm temperature	C,okkizgin and B,ole (2015)
Calcium chloride (CaCl <sub>2</sub> )	Seed priming	100 mg L <sup>-1</sup>	Rice	Better germination and vigorous growth, lesser damage of chilling stress	Hussain <i>et al.</i> (2016)
NaCl	Seed priming	2% for 6 and 12 hr	Bitter gourd ( <i>Momordica charantia</i> L.)	Significant high percent of seed germination, seedling length, fresh weight, dry weight, speed of germination and vigor as compared to unprimed	Saini <i>et al.</i> (2017)

### Iron

Iron is required by plants in largest amount some consider it as macronutrient. Generally it has been observed that iron is taken up as ferrous ion although ferric ion is also taken up. Iron has two main functions. Firstly it is part of the catalytic group for several redox enzymes. Some important redox enzymes are heme-containing cytochromes and non-heme iron-sulfur proteins (e.g. Rieske proteins, ferredoxin, and photosystem I) involved in nitrogen fixation, photosynthesis and respiration. Secondly it is essential for the synthesis of chlorophyll. Iron is also part of oxidase enzymes like catalase and peroxidase.

Losses of chlorophyll and chloroplast structure are degeneration simultaneously which is sign of iron deficiency. Because of low iron mobility chlorosis appears in the interveinal region of young leaves first. In case of severe deficiency veins also show chlorosis symptoms and small leaves turns white (Hopkins and Huner 2008).

**Table 8: Influence over Iron seed treatments in different crops**

Seed treating material	Crop	Mode of application	Dose and duration	Effects on primed seeds	Reference
Iron coated seed	Rice	Seed coating		Higher germination, coleoptile length, seedling emergence rate	Mori <i>et al.</i> (2012)
Ferrous sulfate (FeSO <sub>4</sub> ·7H <sub>2</sub> O, Fe 26%, S 11.5%)	Dill ( <i>Anethum graveolens</i> )	Seed priming		Higher germination rate and seed yield	Mirshekari (2012)
Fe solution	Groundnut ( <i>Arachis hypogaea</i> L.)	Seed priming		Higher growth and yield	Khan <i>et al.</i> (2017)
Fe solution	Bread Wheat	Seed priming	1 mg L <sup>-1</sup> to 8 mg L <sup>-1</sup>	Better germination and yield	Reis <i>et al.</i> (2018)

### Sodium

Sodium ions are mostly required by C4 and CAM plants for carbon fixation pathway. In C4 and CAM pathways the substrate for the first carboxylation is phosphoenolpyruvate. Sodium is required for regeneration of phosphoenolpyruvate (Johnstone *et al.* 1988). In sodium deficiency plants may show chlorosis, necrosis and failure in flowers formation process. Sodium helps in cell expansion which in turn stimulates growth. Sodium can also substitute for potassium as an osmotically active solute (Taiz and Zeiger 2010). Now because important pre-germinative steps such as DNA and RNA synthesis happen within seeds priming with sodium sulfate is beneficial for germination (Mcdonald, 1999). Kulkarni and Shanna (1998) observed that primed seeds started germination from first day as opposed to unprimed seeds which started germination at fifth day.

**Table 9: Influence over Sodium seed treatments on grain yield and grain enrichment in different crops**

Seed treating material	Crop	Mode of application	Dose and duration	Effects on primed seeds	Reference
NaHCO <sub>3</sub>	<i>Vigna mungo</i>	Seed priming	5–120mM for 20 hr	Seedling growth and its dry	Bose, Srivastava, and

				weight were enhanced at 15 and 30mM NaHCO <sub>3</sub> while inhibited at 60 and 120 mM.	Mukherji (1982)
NaHCO <sub>3</sub>	<i>Vigna mungo</i>	Seed priming	15–120mM for 20 hr	Early flowering, higher seed nitrogen content	Bose, Srivastava, and Mathur (1988)
Sodium Sulfate	Maize	Seed priming	0.1%	Better seed emergence	Foti <i>et al.</i> (2008)
NaHCO <sub>3</sub>	Rice	Seed priming	5–20mM for 18 hr	Higher germination, vigour index, soluble and insoluble sugars and primed seedling	Pant and Bose (2015)
NaCl	Cotton	Seed priming	2, 3, 4%	Improved germination rate	C,okkizgin and Bole (2015)
NaCl	<i>Marsdenia tenacissima</i>	Seed priming		Improved germination index	Xiao <i>et al.</i> (2015)
NaCl	Bitter gourd ( <i>Memordica charantia</i> L.)	Seed priming	2% for 6 and 12 hr	Higher seed germination % and speed of germination	Saini <i>et al.</i> (2017)

### Factors affecting nutria-priming

Several ecological and other factors affect seed priming (Farooq *et al.*, 2009). The environmental factors such as oxygen, temperature and concentration of solution are the most important aspects influencing seed priming (Corbineau and Come, 2006).

Oxygen supply during seed soaking improved the effectiveness of seed priming (Farooq *et al.*, 2009). During seed priming in various crops substantial difference can be seen in the performance of aerated vs. non-aerated solutions. Oxygen availability improved seed performance upon sowing (Farooq *et al.*, 2011).

Seed priming effectiveness also depends upon temperature of the priming media. In low temperature although seeds absorb water in optimal amounts but the physiological processes of germination are delayed (Lee *et al.*, 1998). It should be also noted that the possibility of microbial contamination during priming is less in low temperatures (Lee *et al.*, 1998).

In seed priming the effectiveness is determined by two factors; Solution concentration and solution water potential. These factors are very significant because the range between deficiency and toxicity of micronutrients in seed priming is very narrow (Farooq *et al.*, 2011a; Rehman *et al.*, 2012; Shorrocks, 1997). After a critical level of water potential reaches in the seed germination gets started. Seed germination mostly starts when seed water potential ranges from 0 to -2 MPa, though there are inter and intra-specific variations (Corbineau and Come, 2006; McDonald, 2000). Dormant seeds or seeds with hard coats are exceptions.

### **Seed coating and pelleting**

Seed coating means natural seed coat is covered by finely-ground solids or liquids containing dissolved or suspended solids to form a more or less continuous layer. It includes pelleting and many other seed treatments (Scott, 1989). Materials that have effects on seed or soil at the seed-soil interface are used for seed coating.

Seed pelleting is most sophisticated Seed Treatment Technology to modify seed shape and size for precision planting by addition of inert materials to enhance pelletability and handling. For pelleting, it is essential specialized application machinery and techniques and is the most expensive application.

But seed coating means useful materials like microorganisms, plant growth regulators, nutrients and other chemicals are adhered around the seed with the help of some sticky material. Still, both of these terms are being used inter-changeably.

Nutrient, coating material, moisture, fertility status, and nutrient: seed ratio and coating material affects the success and usefulness of seed coating with micronutrients (Halmer, 2008).

### **Zinc**

Seed coating with zinc show enhancing results for crop improvement (Masuthi *et al.*, 2009; Singh, 2007). In cowpea (*Vigna unguiculata* L.) seed yield and other yield attributing characters were significantly increased by Zn seed pelleting. ZnSO<sub>4</sub> (250 mg kg<sup>-1</sup> seed) pelleted seeds showed significantly higher 100 seed weights, seed weight plant<sup>-1</sup> which in turn led to 32.1% seed yield increase over control (Masuthi *et al.*, 2009). Commercially-accessible formulations like 'Teprosyn-ZnP' or 'Teprosyn-Zn' for seed pelleting showed promising results in sunflower, maize, wheat, soybean and peanut by improving their growth, grain yield and corrected their Zn deficiency (Singh, 2007).

### **Boron**

Seed pelleting with Borax (100 mg kg<sup>-1</sup> seed) in cow pea significantly improved pod weight, seeds pod<sup>-1</sup> and pod weight plant<sup>-1</sup> leading to pod yield grain of 37.25% over non-pelleted control (Masuthi *et al.*, 2009). But in rice, boron used as borax, boric acid and sodium tetraborate for seed coating and B: seed ratios (0.5-2 g kg<sup>-1</sup> seed) did not improve the germination. We need more work with a range of B: seed ratios to explore its potential.

## ***Molybdenum***

There are many observations that concluded that molybdenum seed coating is effective (Biscaro *et al.*, 2009; Ramesh and Thirumurugan, 2001). When common bean seeds were treated with Mo (80 g ha<sup>-1</sup>) they resulted in increasing relative chlorophyll index, pod number, seed weight and grain yield (Biscaro *et al.*, 2009). Ramesh and Thirumurugan (2001) observed that soybean seeds treated with 250 mg ammonium molybdate and 500 mg ferrous sulfate kg<sup>-1</sup> resulting in improving plant height, leaf area index, dry matter production and growth rate. While experimenting with cowpea and soybean in field it was observed that Mo application, singly or in combination with rock phosphate, was comparable or higher than the effect of liming in increasing yield in acid soil (Rhodes and Nangju, 1979).

On the other hand, there are several reports that indicate no improvement or toxicity from Molybdenum seed-coating. Suppression of bacterial survival, nodulation and N fixation was observed when seeds were pelleted with sodium molybdate. After seeds were treated with inoculant and Mo, 99% of inoculated bacteria died within 4 days (Burton and Curley, 1966). Mo salts also have suppressive effect on Brady rhizobium (Albino and Campo, 2001; Campo *et al.*, 2000).

While some scientists specify that Molybdenum seed coating is fruitful in enhancing crop growth and development, it may have harmful effects from bacterial strains used for inoculation. So, before using Mo seed coating must be evaluate the effectiveness of Mo seed coating with bacterial strains.

## **6. Conclusion**

Seed treatment through priming or coating is an easy, inexpensive and pragmatic. Micronutrient seed priming can help in meeting the crop's micronutrient requirement. It can also enhance seedling emergence, crop establishment, yield and grain micronutrient enrichment. It is an effective way of micronutrient delivery to small farmer in developing countries. Various crops and varieties/genotypes show different response to different treatments, which will assist investigators to identify helpful accessions for greater extent work such as (a) Advance procedures using a range of micronutrient with suitable concentrations and durations; (b) Oxygenation requirements optimizing the temperature range, and water potential; (c) Utilizing obtainable nutrients for seed priming and coating osmoticum; (d) Estimating broad field trials using nutriprimed seeds; (e) Combining inoculation and micronutrient seed invigoration; (f) Potentiality of storage of nutriprimed seeds extended storage period and the primed seeds may be critical for technology conduct and promote.

## **7. References**

- Afrousheh M, Ardalan M, Hokmabadi H, Hatami S. Visual deficiency symptoms of nitrogen, iron, magnesium, manganese and molybdenum (macro-and micronutrients) on pistachio seedlings. Middle Eastern and Russian Journal of Plant Science and Biotechnology. 2007; 1(2), 61-65.
- Ajouri A, Asgedom H, Becker, M. Seed priming enhances germination and seedling growth of barley under conditions of P and Zn deficiency. J. Plant Nutr. Soil Sci. 2004; 167, 630-636.
- Albino UB, Campo RJ. Efeito de fontes e doses de molibdenio na sobrevivencia do Bradyrhizobium e na fixacao biologica de nitrogenio em soja. Pesq. Agro. Bras.2001; 36, 527-534.

- Arif M, Waqas M, Nawab K, Shahid M. Effect of seed priming in Zn solutions on chickpea and wheat. *Afri. Crop Sci. Pro.* 2007; 8, 237-240.
- Atta-Aly MA. Soaking summer squash seeds in low concentrations of cobalt solution before sowing increased plant growth, femaleness, and fruit yield via increasing plant ethylene level. *J. Plant Growth Regul.* 1998; 17, 25-32.
- Babaeva EY, Volobueva VF, Yagodin BA, Klimakhin GI. Sowing quality and productivity of *Echinacea purpurea* in relation to soaking the seed in manganese and zinc solutions. *Izvestiya Timiryazevskoi Sel'skokhozyaistvennoi Akademii.* 1999; 4, 73-80.
- Basra SMA, Farooq M, Tabassum R, Ahmad N. Physiological and biochemical aspects of seed vigor enhancement treatments in fine rice (*Oryza sativa* L.). *Seed Sci. Technol.* 2005; 33, 623-628.
- Biscaro GA, Goulart Junior SAR, Soratto RP, Freitas-Júnior NA, Motomiya AVA, Calado-Filho GC. Molybdenum applied to seeds and side dressing nitrogen on irrigated common bean in cerrado soil. *Cienc. Agrotec.* 2009; 33, 1280-1287.
- Biswas S, Bordolui SK, Chattopadhyay P. Influence of GA<sub>3</sub> on hybrid rice seed production in West Bengal. *J. of Crop and Weed.* 2020; 16(3): 136-142. <https://doi.org/10.22271/09746315.2020.v16.i3.1378>
- Biswas S, Bordolui SK, Sadhukhan R. Response of China Aster (*Callistephus chinensis* L.) genotypes towards foliar application of GA<sub>3</sub>. *American International Journal of Agricultural Studies.* 2021; 5(1), 1–15. <https://doi.org/10.46545/aijas.v5i1.197>
- Black RE. Therapeutic and preventive effects of zinc on serious childhood infectious diseases in developing countries. *American J. Clin. Nutr.* 1998; 68, 476-479.
- Bose B, Srivastava RC, Mathur SN. Pre-sowing effect of NaHCO<sub>3</sub> on flowering and yield of *Vigna mungo* L. *Vegetos I.* 1988; (2):150–5.
- Bose B, Srivastava RC, Mukherji D. Multipurpose use of NaHCO<sub>3</sub> to *Vigna mungo*. *Plant Physiology Research Laboratory, Department of Botany, University of Gorakhpur.* 1982.
- Bould C, Nicholas DJD, Tolhurst JAH, Wallace T, Potter JMS. Copper Deficiency of Fruit Trees in Britain. *Nature.* 1950; 165(4206), 920–921. <https://doi.org/10.1038/165920A0>
- Bradford KJ. Manipulation of seed water relations via osmotic priming to improve germination under stress conditions. *HortSci.* 1986; 21, 1105-1112.
- Brocklehurst PA, Dearman J. Interaction between seed priming treatments and nine seed lots of carrot, celery and onion. II. Seedling emergence and plant growth. *Ann. Appl. Biol.* 2008; 102, 583-593.
- Burton JC, Curley RL. Compatibility of *Rhizobium japonicum* and sodium molybdate when combined in a peat carrier medium. *Agron. J.* 1966; 58, 327-330.
- Buyckx M. The international community's commitment to combating micronutrient deficiencies. *Food Nutr. Agric.* 1993; 7, 2-7.
- C,okkizgin H, B,öle Y. Priming treatments for improvement of germination and emergence of cotton seeds at low temperature. *Plant Breeding and Seed Science.* 2015; 71 (1):121–34. doi: 10.1515/plass-2015-0027.
- Cakmak, I. Role of zinc in protecting plant cells from reactive oxygen species. *New Phytol.* 2000; 146, 185-205.

- Campo RJ, Albino UB, Hungria M. Importance of molybdenum and cobalt to the biological nitrogen fixation. In: F.O. Pedrosa, M. Hungria, G. Yates, W.E. Newton (eds.). Nitrogen Fixation: From Molecules to Crop Productivity, pp. 597-598, Springer, Netherlands. 2000
- Chakraborty A, Bordolui SK. Impact of Seed Priming with Ag-Nanoparticle and GA<sub>3</sub> on Germination and Vigour in Green gram. Int. J. Curr. Microbiol. App. Sci. 2021; 10(03): 1499-1506 Doi: <https://doi.org/10.20546/ijcmas.2021.1003.119>
- Chang SS. Micronutrients in crop production of Taiwan. In: Proceedings of International Workshop on Micronutrient in Crop Production, held Nov. 8-13, 1999, National Taiwan University, Taipei, Taiwan ROC. 1999
- Clarke SM, Eaton-Rye JJ. Mutation of Phe-363 in the photosystem II protein CP47 impairs photoautotrophic growth, alters the chloride requirement, and prevents photosynthesis in the absence of either PSII-O or PSII-V in *Synechocystis* sp. PCC 6803. Biochemistry. 1999; 38: 2707-2715.
- Corbineau F, Come D. Priming: a technique for improving seed quality. Seed Test. Int. 2006; 132, 38-40.
- Deb P, Das A, Ghosh SK, Suresh CP. Improvement of seed germination and seedling growth of papaya (*Carica papaya* L.) through different pre-sowing seed treatments. Acta Hort. 2010; 851, 313-316.
- Dell B, Huang L. Physiological responses of plants to boron. Plant Soil. 1997; 193, 103-120.
- Donald CM, Spencer D. The control of molybdenum deficiency in subterranean clover by pre-soaking the seed in sodium molybdate solution. Australian J. Agric. Res. 1951; 2, 295-301.
- Farooq M, Aziz T, Rehman H, Rehman A, Cheema SA, Aziz T. Evaluating surface drying and re-drying for wheat seed priming with polyamines: effects on emergence, early seedling growth and starch metabolism. Acta Physiol. Plant. 2011; 33, 1707-1713.
- Farooq M, Basra SMA, Khalid A, Tabassum R, Mehmood T. Nutrient homeostasis, reserves metabolism and seedling vigor as affected by seed priming in coarse rice. Can. J. Bot. 2006; 84, 1196-1202.
- Farooq M, Basra SMA, Wahid A, Khaliq A, Kobayashi N. Rice seed invigoration. In: E. Lichtfouse (ed.). Sustainable Agriculture Reviews. 2009; 137-175. Springer, the Netherlands.
- Farooq M, Rehman A, Aziz T, Habib M. Boron nutripriming improves the germination and early seedling growth of rice (*Oryza sativa* L.). J. Plant Nutr. 2011a; 34, 1507-1515.
- Foth HD, Ellis BG. Soil Fertility, 2<sup>nd</sup> edn. Lewis Publishers, New York, USA. 1997
- Foti R, Abureni K, Tigere A, Gotosa J, Gere J. The efficacy of different seed priming osmotica on the establishment of maize (*Zea mays* L.) caryopses. J. Arid Environ. 2008; 72, 1127-1130.
- Fuchs GJ. Possibilities for zinc in the treatment of acute diarrhea. American J. Clin. Nutr. 1998; 68, 480-483.
- Halmer P. Seed technology and seed enhancement. Acta Hort. 2008; 771, 17-26.

- Harris D, Rashid A, Arif M, Yunas M. Alleviating micronutrient deficiencies in alkaline soils of the North-West Frontier Province of Pakistan: On-farm seed priming with zinc in wheat and chickpea. In: P. Andersen, J.K. Tulad-har, K.B. Karki, S.L. Maskey (eds.). *Micronutri-ents in South and South East Asia, Proceedings of an International Workshop held in Kathmandu, Nepal, 8-11 September, 2004*. The International Centre for Integrated Mountain Development, Kathmandu, Sri Lanka. 2005; 143-151.
- Harris D, Rashid A, Miraj G, Arif M, Shah H. Â On-farm seed priming with zinc sulphate solution - A cost-effective way to increase the maize yields of resource-poor farmers. *Field Crops Res.* 2007; 10, 119-127.
- Harris D, Rashid A, Miraj G, Arif M, Yunas M. Â ‘On-farm’ seed priming with zinc in chickpea and wheat in Pakistan. *Plant Soil.* 2008; 306, 3-10.
- Hassan N, Irshad S, Saddiq MS, Bashir S, Khan S, Wahid MA, Yousra M. Potential of zinc seed treatment in improving stand establishment, phenology, yield and grain biofortification of wheat. *Journal of Plant Nutrition*, 2019; 42(14), 1676-1692.
- Ho SB. Boron deficiency of crops in Taiwan. In: *Proceedings of International Workshop on Micronutrient in Crop Production held on Nov. 8-Â 13, 1999*, National Taiwan University, Taipei, Taiwan ROC.
- Hopkins WG, Huner NPA. *Introduction to plant physiology*. 4th ed., 73-4. Hoboken, NJ: Wiley. 2008
- Hussain S, Khan F, Hussain HA, Nie L. Physiological and biochemical mechanisms of seed priming induced chilling tolerance in rice cultivars. *Frontiers in Plant Science* 2016; 7:116. doi: [10.3389/fpls.2016.00116](https://doi.org/10.3389/fpls.2016.00116).
- Imran M, Neumann G, R mheld V. Nutrient seed priming improves germination rate and seedling growth under submergence stress at low temperature. *International Research on Food Security, Natural Resource Management and Rural Development* Cuvillier Verlag G ttingen. 2004.
- Johansen C, Musa AM, Kumar Rao JVDK, Harris D, Ali MY, Shahidullah AKM, Lauren JG. Correcting molybdenum deficiency of chickpea in the high barind tract of Bangladesh. *J. Plant Nutr. Soil Sci.* 2006b; 170, 752-761.
- Johansen C, Musa AM, Kumar Rao JVDK, Harris D, Shahidullah AKM, Lauren GJ. Seed priming with molybdenum alleviates molybdenum deficiency and poor nitrogen fixation of chickpea in acid soils of Bangladesh and India. In: 18<sup>th</sup> World Congress of Soil Science, July 9-Â 15, 2006a; Philadelphia, Pennsylvania, USA.
- Johnson SE, Lauren JG, Welch RM, Duxbury JM. A comparison of the effects of micronutrient seed priming and soil fertilization on the mineral nutrition of chickpea (*Cicer arietinum*), lentil (*Lens culinaris*), rice (*Oryza sativa*) and wheat (*Triticum aestivum*) in Nepal. *Exper. Agric.* 2005; 41, 427-448.
- Johnston M, Grof CPL, Brownell PF. The Effect of Sodium Nutrition on the Pool Sizes of Intermediates of the C Photosynthetic Pathway. *Australian Journal of Plant Physiology.* 1988; 15(6), 749 - 760
- Kang BT, Okoro EG. Response of flooded rice grown on a vertisol from northern Nigeria to zinc sources and methods of application. *Plant Soil.* 1976; 44, 15-25.

- Kaur R, Arora S, Thukral AK. Enhancing seed germination of *Chlorophytum borivilium* Sant. Et fernand. with PGRs, steroidal hormones and zinc. Res. J. Seed Sci. 2009; 2, 32-39.
- Kaya M, Atak M, Khawar KM, Ciftci CY, Ozcan S. Effect of pre-sowing seed treatment with zinc and foliar spray of humic acids on yield of common bean (*Phaseolus vulgaris* L.). Int. J. Agric. Biol. 2007; 7, 875-878.
- Keerati-Kasikorn P, Panya P, Bell RW, Loneragan JF. Effects of boron on peanut grown in Northeast Soils. In: Proceedings of the Sixth Thailand National Groundnut Meeting. Prince of Songkla University, Songkla, Thailand. 1987.
- Khalid BY, Malik NSA. Presowing soaking of wheat seeds in copper and manganese solutions. Commun. Soil Sci. Plant Anal. 1982; 13, 981-986.
- Khan TA, Ahmed ZI, Syed S, Baloch A, Malik MN. Seed priming with iron and zinc improves growth and yield of groundnut (*Arachis hypogaea* L.). Pure and Applied Biology 2017; 6 (2):553-60.
- Khanal N, Joshi D, Harris D, Chand SD. Effect of micronutrient loading, soil application, and foliar sprays of organic extracts on grain legumes and vegetable crops under marginal farmers' conditions in Nepal. In: P. Andersen, J.K. Tuladhar, K.B. Karki, S.L. Maskey (eds.). Micronutrients in South and South East Asia, pp. 121-132. Proceedings of an International Workshop held in Kathmandu, Nepal, 8-11 September, 2004. The International Centre for Integrated Mountain Development, Kathmandu, Sri Lanka. 2005.
- Kulkarni GN, Shanna MR. Effect of pre-soaking of corn seed on seed quality. Seed Reviews. 1998; 16: 37-46.
- Kumar R, Kumar SS, Pandey AC. Effect of seed soaking in nitrogen, phosphorus, potassium and boron on growth yield of garden pea (*Pisum sativum* L.). Ecol. Environ. Conserv. 2008; 14, 383-386.
- Kumar Rao JVDK, Harris D, Johansen C, Musa AM. Low cost provision of molybdenum (Mo) to chickpeas grown in acid soils. In: Proceedings of the Zvarevashe, CARE Stakeholder Workshop, Report IDG/00/18, Silsoe Research Institute, Bedford, UK. 2004.
- Lee SS, Kim JH, Hong SB, Kim MK, Park EH. Optimum water potential, temperature, and duration for priming of rice seeds. Korean J. Crop Sci. 1998; 43, 1-5.
- Lordkaew S, Dell B, Jamjod S, Rerkasem B. Boron deficiency in maize. Plant and Soil, 2010; 342(1-2), 207-220. <https://doi.org/10.1007/S11104-010-0685-7>.
- Malhi SS. Effectiveness of seed-soaked Cu, autumn- versus spring-applied Cu, and Cu-treated P fertilizer on seed yield of wheat and residual nitrate-N for a Cu-deficient soil. Can. J. Plant Sci. 2009; 89, 1017-1030.
- Malla RM, Padmaja B, Malathi S, Jalapathi RL. Effects of micronutrients on growth and yield of pigeonpea. J. Semi-Arid Trop. Agric. Res. 2007; 5, 1-3.
- Marcar NE, Graham RD. Effect of seed manganese content on the growth of wheat (*Triticum aestivum*) under manganese deficiency. Plant Soil. 1986; 96, 165-173.
- Marschner H. Mineral Nutrition of Higher Plants, 2<sup>nd</sup> edn. Academic Press, London, UK. 1995.

- Masuthi DA, Vyakaranahal BS, Deshpande VK. Influence of pelleting with micronutrients and botanical on growth, seed yield and quality of vegetable cowpea. *Karnataka J. Agric. Sci.* 2009; 22, 898-900.
- McDonald MB. Seed priming. In: Black M., Bewley J.D. (eds.): *Seed Technology and Its Biological Basis*. Sheffield Academic Press, Sheffield, England, UK. 2000; 287-325.
- McDonald MD. Seed deterioration: Physiology, repair and assessment. *Seed Science and Technology*. 1999; 27:177-83.
- Mengel K, Kirkby EA, Kosegarten H, Appel T. *Principles of Plant Nutrition*. Kluwer Academic Publishers, Dordrecht, The Netherlands. 2001.
- Mirshekari B. Seed priming with iron and boron enhances germination and yield of dill (*Anethum graveolens*). *Turkish Journal of Agriculture and Forestry*. 2012; 36:27-33.
- Mohandas S. Effect of presowing seed treatment with molybdenum and cobalt on growth, nitrogen and yield in bean (*Phaseolus vulgaris* L.). *Plant Soil*. 1985; 86, 283-285.
- Mori S, Fujimoto H, Watanabe S, Ishioka G, Okabe A, Kamei M, Yamauchi M. Physiological performance of iron-coated primed rice seeds under submerged conditions and the stimulation of coleoptile elongation in primed rice seeds under anoxia. *Soil Science and Plant Nutrition*. 2012; 56 (4):469-78. doi: [10.1080/00380768.2012.708906](https://doi.org/10.1080/00380768.2012.708906).
- Nazir MS, Jabbar A, Mahmood K, Ghaffar A, Nawaz S. Morphochemical traits of wheat as influenced by pre-sowing seed steeping in solution of different micronutrients. *Int. J. Agric. Biol.* 2000; 2, 6-9.
- Osotsapar Y. Micronutrients in crop production in Thailand. In: *Proceedings of International Workshop on Micronutrient in Crop Production*, held Nov. 8-13, 1999, National Taiwan University, Taipei, Taiwan ROC. 1999.
- Palit S, Sharma A, Talukder G. Effects of cobalt on plants. *Bot. Rev.* 1994; 60, 149-181.
- Pant B, Bose B. Germination of rice seeds primed with various salts. *Indian Biologist*. 2015; 47 (1):17-21.
- Park YH, Lee JY, Kim SC, Kim PJ. Distribution characteristics of micronutrients in soils and vegetable plants in Korea. In: *Proceedings of International Workshop on Micronutrient in Crop Production*, held Nov. 8-13, 1999, National Taiwan University, Taipei, Taiwan ROC. 1999.
- Pattanayak SK, Dash V, Jena MK, Nayak RK. Seed treatment of green gram with molybdenum and cobalt: effect on nodulation, biomass production and N uptake in an acid soil. *J. Ind. Soc. Soil Sci.* 2000; 48, 769-773.
- Peeran SN, Natanasabapathy S. Potassium chloride pretreatment on rice seeds. *Int. Rice Res. Newsletter*. 1980; 5, 19.
- Raj AS. Cobalt nutrition of pigeonpea and peanut in relation to growth and yield. *J. Plant Nutr.* 1987; 10, 2137-2145.
- Ramalingaswami V. New global perspectives on overcoming malnutrition. *American J. Clin. Nutr.* 1995; 61, 259-263.
- Ramesh K, Thirumurugan V. Effect of seed pelleting and foliar nutrition on growth of soybean. *Madras Agric. J.* 2001; 88, 465-468.
- Rasmussen PE, Boawn LC. Zinc seed treatment as a source of zinc for beans. *Agron. J.* 1969; 61, 674-676.

- Ray J, Bordolui SK. Effect of GA<sub>3</sub> on marigold seed production in Gangetic Alluvial Zone. *J. of Crop and Weed*. 2020; 16(1): 120-126. <https://doi.org/10.22271/09746315.2020.v16.i1.1281>
- Ray J, Bordolui SK. Effect of Seed Priming as Pre-Treatment Factors on Germination and Seedling Vigour of Tomato. *International Journal of Plant & Soil Science*. 2022; 34(20): 302-311. DOI: 10.9734/IJPSS/2022/v34i2031156
- Rehman A, Farooq M, Cheema ZA, Wahid A. Role of boron in leaf elongation and tillering dynamics in fine grain aromatic rice. *J. Plant Nutr.* 2013, 36, 42-54.
- Rehman H, Aziz T, Farooq M, Wakeel A, Rengel Z. Zinc nutrition in rice production systems; a review. *Plant and Soil*. 2012; 361, 203–226.
- Reis S, Pavia I, Carvalho A, Moutinho-Pereira J, Correia C, Lima-Brito J. Seed priming with iron and zinc in bread wheat: Effects in germination, mitosis and grain yield. *Protoplasma*. 2018; 255 (4):1179–94. doi: 10.1007/s00709-018-1222-4.
- Rerkasem B, Jamjod S. Boron deficiency in wheat: a review. *Field Crops Res*. 2004; 89: 173-186.
- Rhodes, E.R., Nangju, D. Effects of pelleting cowpea and soybean seed with fertilizer dusts. *Exper. Agric*. 1979; 15, 27-32.
- Saini R, Rai PK, Bara BM, Sahu P, Anjer T, Kumar R. Effect of different seed priming treatments and its duration on seedling characters of Bitter gourd (*Momordica charantia* L.). *Journal of Pharmacognosy and Phytochemistry*. 2017; 6 (5):848–50.
- Saric T, Saciragic B. Effect of oat seed treatment with microelements. *Plant Soil*. 1969; 31, 185-187.
- Scott JM. Seed coatings and treatments and their effects on plant establishment. *Adv. Agron*. 1989; 42, 43-83.
- Shankar AH, Prasad AS. Zinc and immune function: the biological basis of altered resistance to infection. *American J. Clin. Nutr*. 1998; 68, 447-463.
- Sharma CP. *Plant Micronutrients*. Science Publishers, Enfield, NH, USA. 2006
- Sherrell CG. Effect of molybdenum concentration in the seed on the response of pasture legumes to molybdenum. *New Zealand J. Agric. Res*. 1984; 27, 417-423.
- Shivay YS, Kumar D, Prasad R, Ahlawat LPS. Relative yield and zinc uptake by rice from zinc sulphate and zinc oxide coatings onto urea. *Nutr. Cycl. Agroecosys*. 2008; 80, 181-188.
- Shorrocks VM. The occurrence and correction of boron deficiency. *Plant Soil*. 1997; 193, 121-148.
- Singh B, Natesan SKA, Singh BK, Usha K. Improving zinc efficiency of cereals under zinc deficiency. *Curr. Sci*. 2003; 88, 36-14.
- Singh MV. Efficiency of seed treatment for ameliorating zinc deficiency in crops. In: *Zinc Crops 2007, Improving Crop Production and Human Health*, 24-26 May, 2007, Istanbul, Turkey.
- Slaton NA, Wilson-Jr CE, Ntamatungiro S, Norman RJ, Boothe DL. Evaluation of zinc seed treatments for rice. *Agron. J*. 2001; 93, 152-157.
- Sprague HB. *Hunger Signs in Crops*. McKay, New York, USA. 1951

- Srivastava SP, Bhandari TMS, Yadav CR, Joshi M, Erskine W. Boron deficiency in lentil: Yield loss and geographic distribution in a germplasm collection. *Plant Soil*. 2000; 219, 147-151.
- Stout PR, Arnon DI. Experimental methods for the study of the role of copper, manganese, and zinc in the nutrition of higher plants. *Amer J. Bot.* 1939; 26, 144-149.
- Taiz L, Zeiger E. *Plant Physiology*, 5<sup>th</sup> ed. Sinauer Associates, Inc., Publishers, Sunderland, MA, USA. 2010
- Tanaka M, Fujiwar T. Physiological roles and transport mechanisms of boron: perspectives from plants. *Pflügers Arch. European J. Physiol.* 2008; 456, 671-677.
- Taylor AG, Allen PS, Bennett MA, Bradford JK, Burris JS, Misra MK. Seed enhancements. *Seed Sci. Res.* 1998; 8, 245-256.
- Ullah MA, Sarfraz M, Sadiq M, Mehdi SM, Hassan G. Effect of pre-sowing seed treatment with micronutrients on growth parameters of raya. *Asian Journal of Plant Sciences*. 2002.
- Van Campen DR. Trace elements in human nutrition. In: J.J. Mortvedt, F.R. Cox, L.M. Shuman, R.M. Welch (eds.). *Micronutrients in Agriculture*. Soil Science Society of America, Inc. Madison, Wisconsin, USA. 1991; 663-701.
- Wilhelm NS, Graham RD, Rovira AD. Application of different sources of manganese sulphate decreases take-all (*Gaeumannomyces graminis* var. *tritici*) of wheat grown in a manganese deficient soil. *Austr. J. Agric. Res.* 1988; 39, 1-10.
- Xiao XF, Liu L, Guo QS, Li C, Wang P., Yang SC, Hang YY. Effects of seed priming on physiology of seed germination and seedling growth of *Marsdenia tenacissima* under NaCl stress. *Zhongguo Zhong Yao Za Zhi* . 2015; 40 (2), 218–25.
- Yilmaz A, Ekiz H, Gültekin I, Torun B, Barut H, Karanlik S, Cakmak I. Effect of seed zinc content on grain yield and zinc concentration of wheat grown in zinc-deficient soils. *J. Plant Nutr.* 1998; 21, 2257-2264.
- Yilmaz A, Ekiz H, Torun B, Gultekin I, Karanlik S, Bagci SA, Cakmak I. Effect of different zinc application methods on grain yield and zinc concentration in wheat cultivars grown on zinc-deficient calcareous soils. *J. Plant Nutr.* 1997; 20, 461-471.