

Original Research Article

MULTIVARIATE ANALYSIS IN BLACKGRAM (*Vigna mungo* L. Hepper) GENOTYPES

Abstract

The present study was contained black gram, 40 genotypes and experiment will be carried out in Randomized block design with 3 replications. The higher GCV & PCV found in biological yield, harvest index, number of cluster per plant, number of primary branches per plant. The traits were biological yield, harvest index, number of cluster per plant, number of primary branches per plant, seed yield per plant, seed index exposed higher heritability and higher genetic advance as percentage of mean. Regarding on D^2 values 40 black gram genotypes grouped in to 5 clusters. The intra cluster distance ranged from 0 to 30.38. The highest intra cluster distance found in cluster II (30.38). The highest inter cluster distance found between clusters III to cluster IV (168.86). The first principal component was more positively related to seed yield and its contributing traits such as days to maturity (0.305), biological yield (0.203), days to 50% flowering (0.180), seed index (0.018). The positive and negative loading shows the presence of positive and negative correlation trends between the components and the variables.

Key Words: Black gram, Genetic variability, Heritability, Genetic advance, Diversity, PCA

Introduction

Black gram [*Vigna mungo* (L.) Hepper] is a self-pollinated, annual, short duration dicotyledonous legume crop with chromosome number $2n=22$, and belongs to family fabaceae sub-family papilionaceae. Black gram cultivation on marginal lands under rain-fed conditions with low inputs has been an age-old practice in Asian countries. India is the primary center of origin of black gram (Vavilov, 1951). Genetic improvement and development of high yielding varieties are dependent upon genetic variability (Rolaniya *et al.*, 2017) as it provides the base for selection. Germplasm collection and judgment of genetic variability is the very first step in a crop breeding programme. Surveys of genetic variability with the help of suitable parameters such as GCV, heritability estimates and genetic advance are very necessary to start an efficient breeding programme (Konda *et al.*, 2009). Heritability determines that portion of the total variation which is heritable. Genetic advance, expressed as per cent of the population mean, connotes the reaction of different characters towards selection under several selection intensities (Gowsalya *et al.*, 2016). Heritability coupled with

genetic gain is more reliable and efficient in forecasting gain under selection as compared to sole heritability estimates. Thereby, these two parameters should be given due consideration in conjointment for enriching genetic potential of the crop (Sushmitharaj *et al.*, 2018). Genetic diversity is one of the criteria for parent's determination in the hybridization programmes. The accessibility of transgressive segregant in any breeding project depends upon the diversity between the parents associated. The evaluation of genetic diversity through biometrical methodology, for example, Mahalanobis D^2 -statistic has made conceivable to pick genetically diverse parents (Kaewwongwal *et al.*, 2015). The ordination techniques like, principal components analysis (PCA) followed by cluster analysis has been found to be useful tool for getting multi correlated variables into another set of uncorrelated variables, which can be utilized for classification of genotypes into homogenous groups (Sivaprakash *et al.*, 2004).

Material and Methodology

The present experiment was carried out at Field Experimentation Centre of the Department of Genetics and Plant Breeding, Naini Agricultural Institute, Sam Higginbottom University of Agriculture, Technology & Sciences, Prayagraj (UP), during Rabi-2020-2021. The experimental materials comprising of 40 genotypes with one check variety was grown under Randomized Block Design (RBD) with three replications. The morphological traits were recorded and subjected for statistical analysis. The software INDOSTAT were used for the statistical analysis.

Results and Discussion

Analysis of variance showed the genotypes were significant for all the characters studied at both level of significance 1% and 5%, suggesting the existence of high genetic variability among the genotypes for all the traits.

Genotypic coefficient of variation was varied from 1.68% (Days to maturity) to 26.87% (Biological yield) Table1. The traits were biological yield (26.87%), harvest index (24.34%), number of cluster per plant (22.21%) showed higher genotypic coefficient of variation Similar results were reported by Arulbalachandran *et al.*, (2010), Sathees *et al.*, (2019). The traits were seed index (18.66%), seed yield per plant (17.54%) showed moderate genotypic coefficient of variation. Phenotypic coefficient of variation varied from 3.45% (Days to maturity) to 27.91% (Biological yield. Similar results were reported by Aftab *et al.*, (2018), Shoba *et al.*, (2018). The traits were biological yield (27.91%), harvest index

(25.49%), number of cluster per plant (23.44%), number of primary branches per plant (22.49%), seed index (20.18%) showed higher phenotypic coefficient of variation. Similar results were reported by Bishnoi *et al.*, (2017), Vinoth *et al.*, (2014). The traits were seed yield per plant (18.89%), plant height (11.32%), number of pods per cluster (10.5%) showed moderate phenotypic coefficient of variation. Similar results were reported by Chauhan *et al.*, (2020), Sowmini *et al.*, (2013). Heritability varied from 17.11% (Pod length) to 92.71% (Biological yield). The traits were biological yield (92.71%), harvest index (91.18%), number of cluster per plant (89.8%), number of primary branches per plant (88.65%), seed yield per plant (86.26%), seed index (85.49%), plant height (61.26%) showed higher heritability. Similar results were reported by Jeberson *et al.*, (2019), Baisakh *et al.*, (2014). The traits number of pods per cluster (49.82%), number of seeds per pod (48.65%), days to 50% pod setting (43.07%) showed moderate heritability. Genetic advance varied from pod length (0.12%) to harvest index (17.8%). The traits were harvest index (17.8%), biological yield (11.5%) showed moderate genetic advance. Genetic advance as percent mean was varied from 1.69% (Days to maturity) to 53.3% (Biological yield). The traits were biological yield (53.3%), harvest index (47.88%), number of cluster per plant (43.36%), number of primary branches per plant (41.08%), seed index (35.54%), seed yield per plant (33.56%) showed higher genetic advance as percent mean. The traits were plant height (14.28%), number of pods per cluster (10.77%) showed moderate genetic advance as percent mean. Similar results were reported by Patel *et al.*, (2020), Blessy *et al.*, (2019).

Based on D2 values 40 black gram genotypes grouped in to 5 clusters (Table2, Figure1). Similar results were reported by Elangaimannan *et al.*, (2008). Among these cluster I contained highest number of genotypes (24) and cluster II (10), cluster III (4), cluster IV and V had each one genotypes. The intra cluster distance ranged from 0 to 30.38 (Table 3, Figure2). The highest intra cluster distance found in cluster II (30.38). Similar results were reported by Ghafoor *et al.*, (2008). The highest inter cluster distance found between cluster III to cluster IV (168.86). The cluster mean of seed yield per plant varied from 7.06 (cluster II) to 8.19 cluster (I). Similar results were reported by Jayamani *et al.*, (2013). The higher cluster mean of seed yield per plant found in cluster I (8.19) (Table 4). The higher diversity contribution percentage found in seed yield per plant (16.03%). Similar results were reported by Priya *et al.*, (2011).

Principal component analysis (PCA) explains the divergence of black gram genotypes. In present study, PCA was performed for thirteen quantitative traits of black gram. Out of 6

principal components (PCs), only 5 PCs exhibited more than 1.00 Eigen value viz., PC1 (4.85), PC2 (1.93), PC 3 (1.55), PC 4 (1.36), PC5 (1.15) showed about 83.40% (Table 5). Similar results were reported by Jeberson *et al.*, (2019). Variability among the traits studied for each genotype. Hence, these 5 principal components were given due importance for the further explanation. The PC1 had 37.33%, PC2 showed 14.83%, PC3 11.92% exhibited, PC4 showed 10.50%, PC5 (8.83%). Similar results were reported by Mohanlal *et al.*, (2018).

The first principal component was more positively related to seed yield and its contributing traits such as days to maturity (0.305), biological yield (0.203), days to 50% flowering (0.180), seed index (0.018). Similar results were reported by Prakash *et al.*, (2022). The second principal component was more positively related to seed yield and its contributing traits such as plant height (0.289), pod length (0.094), harvest index (0.085), number of seeds per pod (0.072), days to 50% flowering (0.046), days to maturity (0.023). Similar results were reported by Thirumalai *et al.*, (2020). The third principal component was more positively related to seed yield and its contributing traits such as days to 50% flowering (0.507), number of cluster per plant (0.0431), harvest index (0.373), days to maturity (0.332), seed yield per plant (0.199), number of primary branches (0.114). Similar results were reported by Ayesha *et al.*, (2021). The fourth principal component was more positively related to seed yield and its contributing traits such as seed index (0.541), number of seeds per pod (0.364), days to 50% flowering (0.322), harvest index (0.298), days to 50% pod setting (0.234), seed yield per plant (0.015). Similar results were reported by Reddy *et al.*, (2021). The fifth principal component was more positively related to seed yield and its contributing traits such as number of seeds per pod (0.194), biological yield (0.155), seed yield per plant (0.134), pod length (0.103), number of primary branches (0.026), harvest index (0.018). Similar results were reported by Jyothi *et al.*, (2021).

CONCLUSION

The analysis of variance revealed that the existence for all the traits. Hence, the

data on all the 13 traits which showed significant difference among the entries were subjected to further statistical analysis.

The genotypes were NO-7368-15 (10.23g), VBN-11-016 (9.99g), KU-88-31-2 (9.57g)

PDU-104 (9.28g) exhibited highest seed yield per plant. The higher GCV & PCV found in biological yield, harvest index, number of cluster per plant, number of primary branches per plant. The traits were biological yield, harvest index, number of cluster per plant, number of primary branches per plant, seed yield per plant, seed index exposed higher heritability (Broad sense) and higher genetic advance as percentage of mean.

Regarding on D^2 values 40 black gram genotypes grouped in to 5 clusters. Among these cluster I contained highest number of genotypes (24) and cluster II (10), cluster III (4), cluster IV and V had each one genotypes. The intra cluster distance ranged from 0 to 30.38. The highest intra cluster distance found in cluster II (30.38). The highest inter cluster distance found between cluster III to cluster IV (168.86).

The first principal component was more positively related to seed yield and its contributing traits such as days to maturity (0.305), biological yield (0.203), days to 50% flowering (0.180), seed index (0.018). The positive and negative loading shows the presence of positive and negative correlation trends between the components and the variables.

Reference

- Aftab, Nashra, GM Lal, Ashish Sheera, N Chandra Bose, and Avneesh M Tripathi. 2018. "Evaluation of genetic variability in black gram (*Vigna mungo* (L.) Hepper) germplasm." *Journal of Plant Development Sciences* 10 (8):445-452.
- Arulbalachandran, D, L Mullainathan, S Velu, and C Thilagavathi. 2010. "Genetic variability, heritability and genetic advance of quantitative traits in black gram by effects of mutation in field trail." *African Journal of Biotechnology* 9 (19):2731-2735.
- Ayesha, Md, D Ratna Babu, A Prasanna Rajesh, Lal Ahmed Md, and V Manoj Kumar. 2021. "Principal components of genetic diversity in black gram [*Vigna mungo* (L.) Hepper]."
- Baisakh, B, TR Das, and KK Panigrahi. 2014. "Genetic variability and correlation analysis for yield and yield contributing traits in advanced mutant lines of blackgram." *Food Legumes* 27 (3):202-205.
- Bishnoi, Anu, Priyanka Gupta, DR Meghawal, and GM Lal. 2017. "Evaluation of genetic variability and heritability in blackgram (*Vigna mungo* (L.) Hepper) genotypes." *Journal of pharmacognosy and phytochemistry* 6 (4):493-496.
- Blessy, V, B Pavan Naik, and B Nandini Priya Yadav. 2018. "Studies on genetic variability in blackgram (*Vigna mungo* (L.) Hepper)." *Journal of pharmacognosy and phytochemistry* 7 (4):1730-1732.
- Chauhan, Shilpa, Raj Kumar Mittal, Vinod Kumar Sood, and Ranjana Patial. 2020. "Evaluation of genetic variability, heritability and genetic advance in blackgram [*Vigna mungo* (L.) Hepper]." *Legume Research-An International Journal* 43 (4):488-494.
- Elangaimannan, R, Y Anbuselvam, and P Karthikeyan. 2008. "Genetic diversity in blackgram [*Vigna mungo* (L.) Hepper]." *Legume Res* 31 (1):57-59.
- Ghafoor, Abdul, and Muhammad Arshad. 2008. "Multivariate analyses for quantitative traits to determine genetic diversity of blackgram *Vigna mungo* (L.) Hepper germplasm." *Pak. J. Bot* 40 (6):2307-2313.
- Gowsalya, P, D Kumaresan, D Packiaraj, and JR KannanBapu. 2016. "Genetic variability and character association for biometrical traits in blackgram (*Vigna mungo* (L.) Hepper)." *Electronic Journal of Plant Breeding* 7 (2):317-324.
- Jayamani, P, and M Sathya. 2013. "Genetic diversity in pod characters of blackgram (*Vigna mungo* L. Hepper)." *Legume Research-An International Journal* 36 (3):220-223.

- Jeberson, M Samuel, KS Shashidhar, and Amit Kumar Singh. 2019. "Genetic variability, principal component and cluster analyses in black gram under Foot-hills conditions of Manipur." *Legume Res* 4:454-460.
- Jyothi, Sateesh Babu. "Multivariate Analysis in Blackgram (*Vigna Mungo* (L.) Based on Quantitative Traits."
- Kaewwongwal, Anochar, Alisa Kongjaimun, Prakrit Somta, Sompong Chankaew, Tarikar Yimram, and Peerasak Srinives. 2015. "Genetic diversity of the black gram [*Vigna mungo* (L.) Hepper] gene pool as revealed by SSR markers." *Breeding science* 65 (2):127-137.
- Konda, CR, PM Salimath, and MN Mishra. 2009. "Genetic variability studies for productivity and its components in blackgram [*Vigna mungo* (L.) Hepper]." *Legume Res* 32 (1):59-61.
- Mohanlal, VA, K Saravanan, and T Sabesan. 2018. "Multivariate analysis in blackgram (*Vigna mungo* L. hepper) genotypes." *Journal of pharmacognosy and phytochemistry* 7 (6):860-863.
- Patel Rahikaben, N, and Madhu Bala. 2020. "Genetic variability study for yield and its components in black gram [*Vigna mungo* (L.) Hepper]." *Journal of pharmacognosy and phytochemistry* 9 (4):2061-2064.
- Prakash, K Kiran, G Bindhu Madhavi, A Prasanna Rajesh, MV Ramana, and Y Pushpa Reni. 2022. "Principal Component Analysis for Yield and Quality Traits of Blackgram (*Vigna mungo* (L.) Hepper)." *International Journal of Plant & Soil Science*:38-47.
- Priya, Srivastava, Pandey Anjana, and Prakash Sinha Diamond. 2011. "Genetic diversity analysis in different varieties of black gram using RAPD markers." *Journal of plant breeding and crop science* 3 (3):53-59.
- Reddy, A Kavitha, M Shanthi Priya, D Mohan Reddy, and B Ravindra Reddy. "Principal Component Analysis for Yield in Blackgram (*Vigna mungo* L. Hepper) under Organic and Inorganic Fertilizer Managements."
- Rolaniya, Dharmendra Kumar, Mahendra Kumar Jinjwadiya, Deva Ram Meghawal, and GM Lal. 2017. "Studies on genetic variability in blackgram (*Vigna mungo* L. Hepper) germplasm." *Journal of pharmacognosy and phytochemistry* 6 (4):1506-1508.
- Sathees, N, D Shoba, S Saravanan, S Merina Perm Kumari, and M Arumugam Pillai. 2019. "Studies on genetic variability, association and path coefficient analysis in black gram (*Vigna mungo* L. Hepper)." *International Journal of Current Microbiology and Applied Sciences* 8 (6):1892-1899.

- Shoba, D. 2018. "Genetic variability and correlation studies in black-gram [Vigna mungo (L.) Hepper]." *Electronic Journal of Plant Breeding* 9 (4):1583-1587.
- Sivaprakash, KR, SR Prashanth, BP Mohanty, and Ajay Parida. 2004. "Genetic diversity of black gram (Vigna mungo) landraces as evaluated by amplified fragment length polymorphism markers." *Current Science*:1411-1416.
- Sowmini, K, and P Jayamani. 2013. "Genetic variability studies for yield and its component traits in RIL population of blackgram (Vigna mungo (L.) Hepper)." *Electronic Journal of Plant Breeding* 4 (1):1050-1055.
- Sushmitharaj, DV, D Shoba, and M Arumugam Pillai. 2018. "Genetic variability and correlation studies in black gram (Vigna mungo [L.] hepper) with reference to YMV resistance." *International Journal of Current Microbiology and Applied Sciences* 6:2849-2856.
- Thirumalai, R, and S Murugan. 2020. "Multivariate analysis in blackgram (Vigna mungo (L.) hepper) genotypes for mungbean yellow mosaic virus (mymv) resistance." *Plant Archives* 20 (1):2473-2480.
- Tripathi, Kuldeep, Muraleedhar S Aski, Neeta Singh, Ashok Kumar, and Hanuman Lal. 2022. "Understanding genetic diversity in blackgram [Vigna mungo (L.) Hepper] collections of Indian National Genebank." *Genetic Resources and Crop Evolution* 69 (3):1229-1245.
- Vavilov, Nikolaï Ivanovich. 1951. *The origin, variation, immunity and breeding of cultivated plants*. Vol. 72: LWW.
- Vinoth, R, and P Jayamani. 2014. "Genetic variability studies for yield and its component traits in inter sub specific RIL population of blackgram (Vigna mungo (L.) Hepper)." *Trends in Biosciences* 7 (4):243-245.

Tables

Table 1. Genetic parameters for 13 quantitative characters in 40 black gram genotypes

Traits	GCV	PCV	h² (Broad Sense)	G.A 5%	G.A as % of Mean 5%
Days to fifty percent flowering	2.33	4.67	24.85	1.36	2.39
Days to fifty percent pod setting	2.38	3.63	43.07	2.05	3.22
Plant height (cm)	8.86	11.32	61.26	6.26	14.28
Number of primary branches per plant	21.18	22.49	88.65	1.53	41.08
Days to maturity	1.68	3.45	23.7	1.64	1.69
Number of clusters per plant	22.21	23.44	89.8	2.87	43.36
Number of pods per cluster	7.41	10.5	49.82	0.51	10.77
Pod length (cm)	2.92	7.06	17.11	0.12	2.49
Number of seeds per pod	6.56	9.4	48.65	0.5	9.42
Biological yield (g)	26.87	27.91	92.71	11.5	53.3
Seed Index (g)	18.66	20.18	85.49	1.28	35.54
Harvest index (%)	24.34	25.49	91.18	17.8	47.88
Seed yield per plant (g)	17.54	18.89	86.26	2.55	33.56

Table 2. Cluster pattern of blackgram [*Vigna mungo* (L.) Hepper] 40 genotypes based on D²(Diversity)

Cluster Group	No. of Genotypes	List of Genotypes
1 Cluster	24	LBG-752, KU-48, PLU-103, PDU-6, VBN-11-016, KC-153, K-16-4, PL-416, PGRU-99022, ADT-3, TBG-104, KU-42, IPU-94-2, SNTP-02, IPU-99-16, PU-11-14, IPU-94-1, IPU-1070, PLU-19, MASH-338, PKRV-03, KU-88-31-2, IPU-95-13 & NO-7368-15
2 Cluster	10	DLU-708, PU-31, H-1, PKRU-03, IPU-99-18, KU-302, KU-96-4, PDU-104, VBN-5 & T-9
3 Cluster	4	AZAD-1, DH-85-5, KU-99-16 & AKU-11-21
4 Cluster	1	L-6
5 Cluster	1	SHEKHAR-2

Table 3. Mean intra and inter-cluster distances among five (5) clusters in blackgram

[*Vigna mungo* (L.) Hepper] by Tocher's method

Clusters	Cluster 1	Cluster 2	Cluster 3	Cluster 4	Cluster 5
Cluster 1	24.76	52.38	52.8	97.45	66.86
Cluster 2	52.38	30.38	95.77	73.8	56.33
Cluster 3	52.8	95.77	18.3	168.86	130.67
Cluster 4	97.45	73.8	168.86	0	97.03
Cluster 5	66.86	56.33	130.67	97.03	0

Table 4. Cluster means for different characters in blackgram [*Vigna mungo* (L.) Hepper] by Tocher's method

Clusters	Days to fifty percent flowering	Days to fifty percent pod setting	Plant height (cm)	Number of primary branches per plant	Days to maturity	Number of clusters per plant	Number of pods per cluster	Pod length (cm)	Number of seeds per pod	Biological yield (g)	Seed Index (g)	Harvest index (%)	Seed yield per plant (g)
Cluster 1	57.26	65.94	42.31	3.51	97.57	6.47	4.76	4.68	5.19	24.31	3.71	34.64	8.19
Cluster 2	57.17	65.6	46.1	4.5	97.13	7.12	4.81	4.81	5.68	14.64	3.47	48.19	7.06
Cluster 3	57.58	63.17	44.32	2.44	97.25	4.71	4.25	4.43	4.8	23.85	3.47	23.26	5.47
Cluster 4	57	66.33	49.4	4.85	99.67	12.12	5.3	4.57	5.09	16.18	2.6	45.59	7.38
Cluster 5	49.33	67.33	49.75	5.32	87.33	7.1	6.39	5.48	6.05	21.71	4.16	34.74	7.54

Table 5. Eigen values, percent variability, Cumulative percent variability and characters loading of six principle components for different genotypes of black gram

Canonical Roots Analysis (P. C. A.)							
SL.NO.		1 Vector	2 Vector	3 Vector	4 Vector	5 Vector	6 Vector
	Eigen Value (Root)	4.85	1.93	1.55	1.36	1.15	0.67
	% Var. Exp.	37.33	14.83	11.92	10.50	8.83	5.13
	Cum. Var. Exp.	37.33	52.15	64.08	74.57	83.40	88.53
1	Days to fifty percent flowering	0.18	0.05	0.51	0.32	0.02	0.26
2	Days to fifty percent pod	-0.09	-0.29	-0.01	0.23	-0.65	0.53
3	Plant height (cm)	-0.17	0.29	-0.11	-0.40	-0.47	-0.11
4	Number of primary branch	-0.43	-0.01	0.11	-0.06	0.03	-0.09
5	Days to maturity	0.30	0.02	0.33	-0.07	-0.35	-0.36
6	Number of clusters per plant	-0.25	-0.25	0.43	-0.33	-0.10	-0.13
7	Number of pods per cluster	-0.35	-0.21	-0.17	-0.16	-0.15	0.14
8	Pod length (cm)	-0.41	0.09	-0.13	-0.02	0.10	-0.15
9	Number of seeds per pod	-0.36	0.07	-0.12	0.36	0.19	0.19
10	Biological yield (g)	0.20	-0.53	-0.28	-0.16	0.16	0.01
11	Seed Index (g)	0.02	-0.13	-0.33	0.54	-0.32	-0.57
12	Harvest index (%)	-0.34	0.09	0.37	0.30	0.02	-0.20
13	Seed yield per plant (g)	-0.11	-0.64	0.20	0.01	0.13	-0.20

Figure 1. Dendrogram D² clusters for black gram genotypes

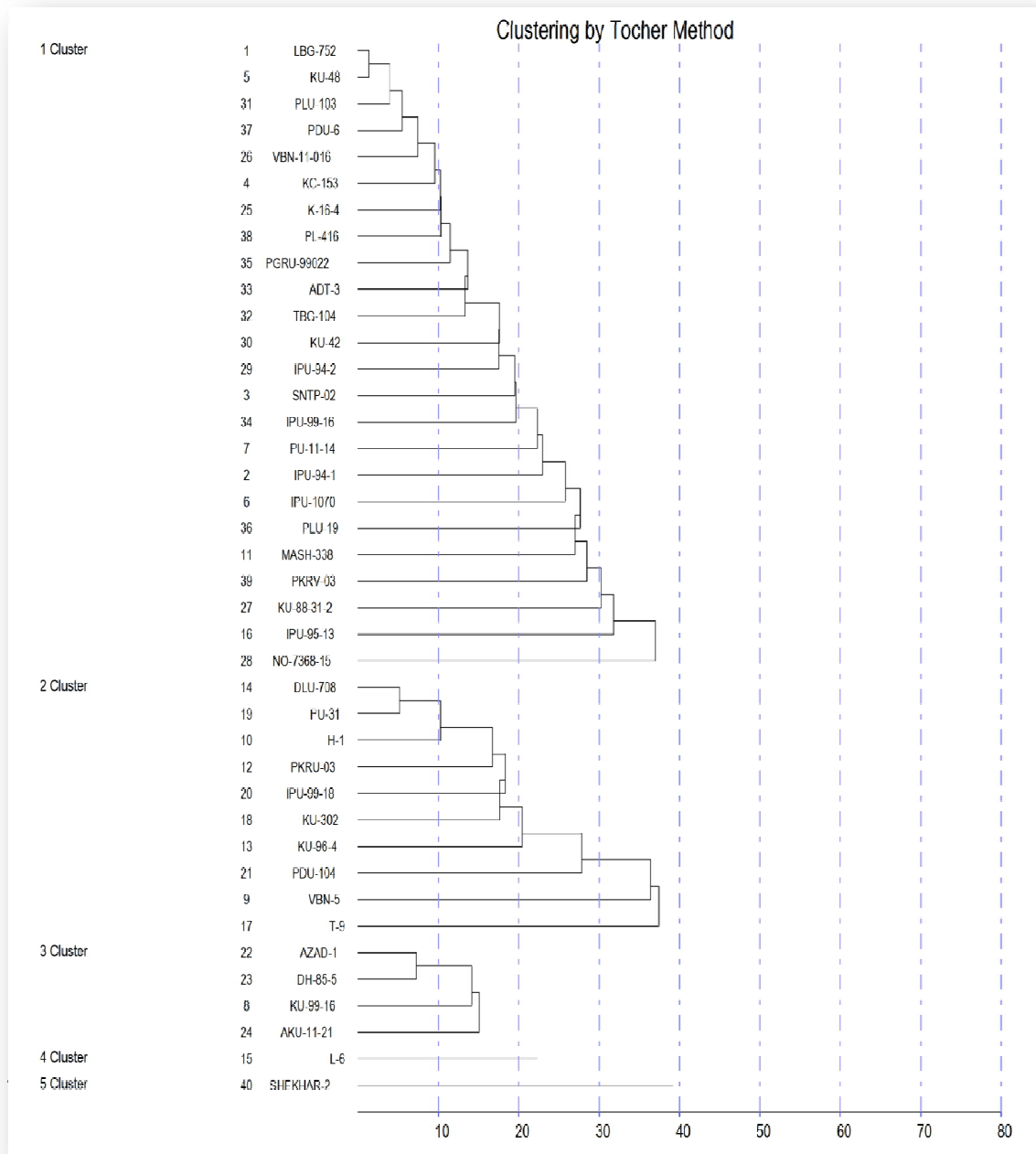
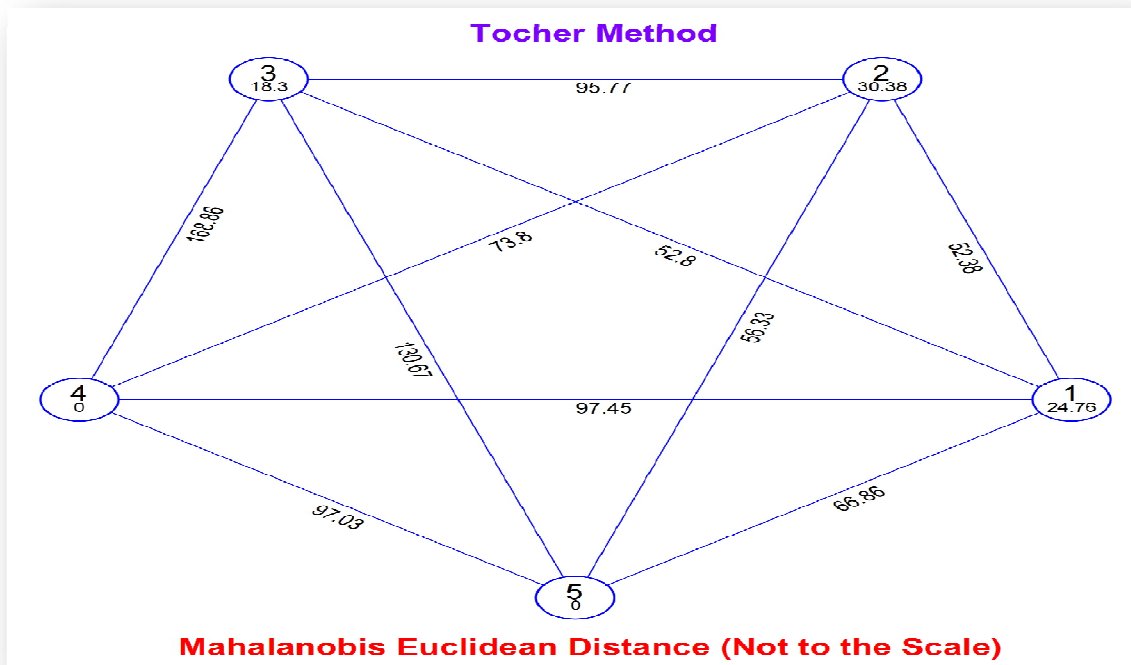


Figure 2. Clustering by Tocher Method



UNDER PEER REVIEW