

## Spatio-temporal dynamics of land use in lake ecosystems in the Sudano-Guinean zone (Adamaoua-Cameroon)

### Abstract

This study aims to characterise the spatio-temporal mutations experienced by four lake ecosystems in the Vina Department, Adamaoua Region, Cameroon, over 31 years between 1990 and 2021, due to strong anthropogenic activities caused by the increase in demography. Landsat satellite images from 1990, 2006 and 2021 were exploited using remote sensing and GIS. ~~Unsupervised~~ The unsupervised classification was used to obtain nine land cover and land use classes (agricultural space, forest gallery, tree savannah, shrub savannah, grassy savannah, bare soil, water surface, hydromorphic zone and housing zone). From 1990 to 2021, the evolutionary typology of the plant formations is essentially regressive for the shrub savannahs (16.21 ha at Lake Bini, 30.56 ha at Lake Dang, 118.13 at Lake Mballang and 9.67 ha at Lake Ngaoundaba). On the other hand, the dynamics is ~~is~~ progressive for the agricultural space (24.40 ha at Lake Bini, 24.38 ha at Lake Dang, and 16.72 at Lake Mballang). The water surface, being the particular specificity of the lacustrine wetlands, has decreased in the lacustrine ecosystem of Bini (0.27 ha) and Mballang (0.04). On the other hand, there was an increase in the lake ecosystems of Lake Dang (0.40 ha) and Ngaoundaba (0.21 ha). The banks of Lake Ngaoundaba are devoid of remarkable agricultural space. The factors of this degradation are mainly human (agriculture, overgrazing and galloping demography) and result in the fragmentation and fragmentation of natural habitats to the benefit of cultivated areas and purely anthropogenic housing zones.

Comment [PP1]: Need to rephrase

Comment [PP2]: Do we have baseline data for these statistics and if yes, its important to include them

**Key-words:** lake ecosystems; spatio-temporal mutations; occupation units, land use; Vina Department; Adamaoua-Cameroon.

### Introduction

In the Sahelian countries, the combined effects of changing rainfall patterns, population growth and land degradation have led to a deterioration of soil and water resources. Since the 19<sup>th</sup> century, the Sahel has experienced both droughts and wetter periods. In addition to this natural variability, it is now necessary to take into account the impact of climate change on the rainfall regime (Defrance *et al.*, 2017). These uncertain factors influencing rainfall have a major impact on the evolution of Sahelian lake systems. Indeed, a large proportion of these lakes are endoreic systems that form reservoirs during the dry season. Their vulnerability to climatic constraints, combined with their great societal importance, makes it essential to understand their hydrological functioning. In the context where ecosystem landscapes have experienced major disturbances due to both natural processes and anthropogenic activities (Vittek *et al.*, 2014). Lake ecosystems are undergoing many changes related to more intense human activities to meet the socio-economic needs of the populations. This is materialised by the fragmentation of the landscape and the loss of habitats of the flora and fauna of the banks and the hydro system (Bahroun, 2011).

Comment [Ma3]: Is this a country or a place or a system ? Please be specific

Comment [Ma4]: There is need for reference for this fact

Comment [PP5]: What is this really ?

Formatted: Superscript

In Cameroon, the pressure exerted on lake ecosystems by populations in search of new fertile land for market gardening or even off-season crops and fishery resources is at the origin of the transformation and fragmentation of natural habitats (Touchard, 1996). These transformations result in the conversion of natural formations into fields, ranches, effluent outfalls, and the erosion of biological diversity and the shortening of the life of lakes.

The ecological manifestations resulting from this state of affairs are worrying for the populations that depend directly or indirectly on the natural resources that are being lost. Understanding the succession dynamics of the constituent elements of lake ecosystems is, therefore, a necessity for sustainable management of natural resources for the benefit of the population's well-being (Messenger *et al.*, 2016). In addition, degradation and deforestation caused by human activities are at the origin of the emission of a significant amount of carbon. Anthropogenic carbon leads to an increase in GHG concentration, which can contribute to climate change (Chaplin-Kramer *et al.*, 2015). Quantifying degradation or deforestation processes is, therefore, a necessity for the implementation of a policy to increase ecosystem carbon stocks in the framework of REDD+. Remote sensing is an important tool for providing quantitative information over time and space on land use and occupation.

Comment [PP6]: Not sure if we have this kind of carbon. You may wish to revisit this part.

Comment [PP7]: Write is full followed by the abbreviation.

Comment [PP8]: As comment under PP7

The study of land cover dynamics in time and space, using satellite images and remote sensing techniques, contributes effectively to the sustainable management of natural resources (Leimgruber *et al.*, 2005).

Indeed, the analysis of satellite images through remote sensing provides data on land cover and its changes over large inaccessible areas repeatedly for a period of over 40 years (Vittek *et al.*, 2014).

**Comment [PP9]:** This is a repeated fact which is above

In Cameroon, land use studies have reported the degradation of wetland lake ecosystems without quantifying the factors that have changed. Few studies have focused on the dynamics of lake complexes over time, and analysed quantitatively and qualitatively the changes that have occurred within these units. In addition, spatially explicit knowledge of all these parameters is crucial for understanding and modelling a wide variety of Earth system processes and interactions with the environment, including water budgets (Muller *et al.*, 2014); carbon or methane exchange rates (Bastviken *et al.*, 2011); sediment trapping (Downing *et al.*, 2008); heat flux and coupled effects of weather and climate (Balsamo *et al.*, 2012); the cycling of pollutants and nutrients (No<sup>o</sup>ges *et al.*, 2009); as well as associated ecological processes such as lake productivity (Staeher *et al.*, 2012); species richness (Dodson *et al.*, 2000); food chain dynamics (Post *et al.*, 2010); and inland fisheries yields (De Graaf *et al.*, 2012).

The overall objective of this work, therefore, is to evaluate the spatio-temporal dynamics of the land use units of the lake complexes (Lake Bini, Lake Dang, Lake Mballang and Lake Ngaoundaba), by coupling remote sensing tools with geographic information systems.

**Comment [PP10]:** Are these all the lakes in Cameroon and if not, you need to say so the write up

## 1. Data and methods

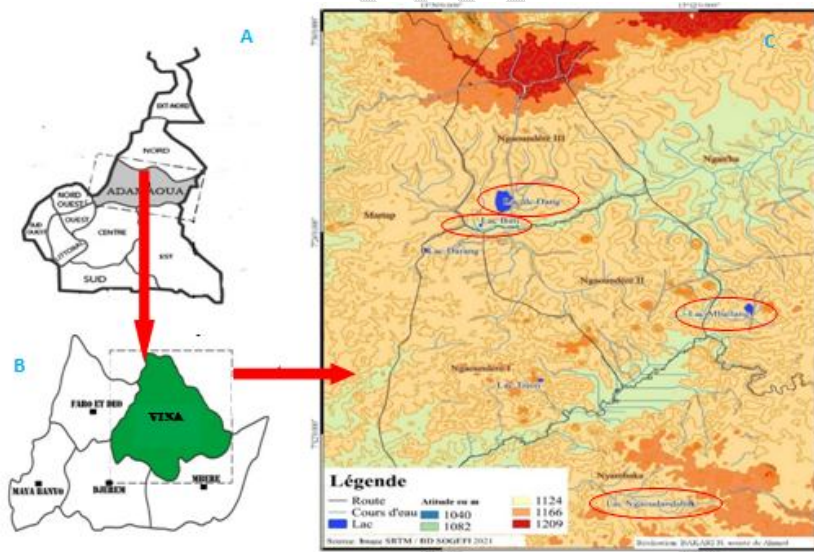
### 1.1. Description of the study area

The study area is located between 6° and 8° North latitude and between 11° and 15° East longitude, the Adamaoua Cameroon region extends over 63701 km<sup>2</sup>. It is bordered to the North by the North region, to the South by the Centre and East regions, to the East by the Central African Republics, to the West by the Federal Republic of Nigeria and to the South-West by the West and North West regions. The climate is Sudano-Guinean, mild and cool, characterised by two seasons, a rainy season (April to October) and a dry season (November to March) (MINEF, 1994). The average annual rainfall is 1500mm per year spread over seven months. It is considered the "water tower" of the country because of its highly diversified water network, which originates in the same region and many of the country's rivers have their source there. The investigations took place in the Vina department (Fig. 1), more precisely in the lake ecosystems of the districts of Ngaoundéré III (Lake Bini and Lake Dang), Nymbaka (Lake Ngaoundaba) and Ngan-ha (Mballang).

**Comment [PP11]:** Are these regions of Cameroon or other countries and if you, please be specific

**Comment [PP12]:** Provide reference for the statistics

**Comment [PP13]:** Is this a place ?



**Figure 1:** Location map of the Adamaoua region (A), Vina Department (B) and lake ecosystems (C)

### 1.2 Planimetric data

The data used in the study of land cover dynamics here ~~isare~~ essentially satellite images, all captured at the beginning of the dry season. Indeed, the very low cloud cover of the dry season allows the satellite sensor to have good views (Inoussa *et al.*, 2011). Therefore, Landsat\_5 from February 1990, Landsat\_7 from February 2006 and Landsat\_8 from February 2021, all with a resolution of 30\_m, ~~wasere~~ uploaded to the website <http://earthexplorer.usgs.gov> in GEOTIFF format. Topographic maps and base maps from the National Institute of Cartography were also used in this study. A GARMIN GPS (Global Positioning System) was used to locate the position of the various field control points. In addition to these planimetric data, some data (density, sown areas, pedology, etc.) ~~wasere~~ collected during a light survey of the populations to better profile the analysis of the dynamics of land use (Agbanou *et al.*, 2018).

### 1.3 Methods

After downloading ~~these~~ images (1990; 2006 and 2021) with less than 10% cloud cover, we imported them into Envi 4.5. It is in this software that the supervised classification operations took place. Thus we applied the supervised classification algorithm ~~on-to~~ the maximum likelihood parameter. Beforehand, it was necessary to import the shapefile vector layer of the boundary of the different lake ecosystems ~~in-order~~ to create the metadata on which a coloured composition ~~was~~ applied ~~in-order~~ to create the mask. The creation of the mask ~~was~~ essential since it allows ~~oneus~~ to delimit only the area in which ~~one would~~ we want to work ~~on~~. Once the mask has been created, it must be applied to the metadata and then a coloured composition (RGB) ~~must be made to leave only the area to be studied~~. Here, the radiometric bands that can provide ~~oneus~~ with information on land use and land cover units were overlaid by additive synthesis of primary colours (Agbanou *et al.*, 2018). Thus, the bands were combined through a false colour composition with the combination of bands 2, 3 and 4 for the ETM+ image and 3, 4 and 5 for the OLI-TIRS image. This operation ~~therefore, therefore~~, consisted in making a false colour composition in RGB (Red-Green-Blue). ~~In-order-to~~ facilitate the overlay of images for diachronic analysis, the 1990, 2006 and 2021 images were co-registered using the image-to-image coregistration method, which ensures a good alignment of the pixels of the different images. The land use points were painted in different colours characteristic of the land uses.

Comment [Ma14]: Consider combining these short sentences.

Comment [Ma15]: What is this supposed to mean ?

~~Then~~, the study area was cut to the part of the image corresponding to the area of interest from the polygon representing the boundaries of the Boroughs. The supervised classification method according to the maximum likelihood algorithm was used. The classification established and the colours used to represent each land use category were adapted from the Corine Land Cover (CLC) nomenclature. The accuracy and Kappa index were used to validate the classifications. The land cover maps produced provided the basic data for the analysis and quantification of the landscape. The areas of the different land-use categories were calculated and diagrams were drawn to assess the speed and intensity of change. Both descriptive and diachronic approaches were used for the analysis.

Comment [Ma16]: Being a new paragraph, find a better opening word not like a continuation of the paragraph above

Quantum GIS ~~is 2.14~~ (Geographic Information System) ~~2.14~~ was used to design the maps and calculate the areas of each land use class via the "group\_stats" extension, which can be downloaded directly from the list of Qgis extensions. The following landscape indices were calculated to assess the observed dynamics:

Comment [Ma17]: What is this supposed to mean ?

#### ❖ Kappa coefficient or index

The coefficient or Kappa index, which corresponds to the ratio of the number of ~~well-well~~-ranked pixels to the total number of pixels surveyed, ~~was~~ retained as it better indicated ~~s~~ the agreement between the predicted models and reality (Tilahun *et al.*, 2015). It ~~was~~ expressed as:

$$K = (Po - Pa) / 1 - Pa$$

With Po = actual percentage of land cover elements classified, Pa = estimate of the probability of obtaining a correct classification.

#### ❖ Normalized Differential Vegetation Index (NDVI)

This is the most widely used vegetation index and is calculated from the visible and near infrared light reflected by the vegetation. Healthy vegetation absorbs most of the visible light that reaches it and reflects most of the near infrared light (Halima and Djamel, 2020). It ~~was~~ calculated using this formula:

$$NDVI = (NIR - Red) / (NIR + Red)$$

Knowing that NIR is the Near Infrared band, represented by band 4 in Landsat 5TM and 7ETM+ images and band 5 in Landsat 8 OLI/TIRS images; Red is the Red Band, represented by band 3 in Landsat 5TM and 7ETM+ images and band 4 in Landsat 8 OLI/TIRS images. Knowing that NDVI values are theoretically between -1 and +1, negative values correspond to non-vegetated surfaces such as snow, water or clouds. For bare soil, the NDVI has values close to 0. Vegetation formations have positive NDVI values, generally between 0.1 and 0.7, with

the highest values corresponding to the densest cover. The NDVI index offers one without the possibility to analyse the change in vegetation cover during the study years (Halima and Djamel, 2020).

#### ❖ Typology of changes ( $\Delta$ )

The typology of changes was characterised based on the nomenclature described by FAO (2011). To do so, a subtraction was performed between the digital values of the two images so that the change detection consisted in identifying the change of codes for the homologous vectors ( $\Delta_i$ ). After the land use maps of 1990; 2006 and 2021 were drawn up, a two-by-two comparative analysis (1990-2006; 1990-2006 and 1990-2021) was made. The analysis of the evolution of the different land use units was done using the following formula.

$$\Delta = S_{it} - S_{t1}$$

S<sub>it</sub> is for the area of land occupation by a unit at an initial date, whereas S<sub>t1</sub> is for the area of land occupation of the same unit at a given date and  $\Delta$  the variation of this inter-periodic area. If:  $\Delta = 0$ , then there is stability (S);  $\Delta \geq 0$ , then there is progressive evolution (P);  $\Delta < 0$ , then there is regression (R).

#### ❖ Average annual rates of spatial expansion

The areas of land use and land cover units between the two dates were used to calculate the annual expansion rate according to the following formula from Bernier (1992):

$$T = (\ln S_1 - \ln S_0) / \ln e (t_1 - t_0) * 100$$

S<sub>0</sub> and S<sub>1</sub> represent the areas of a landscape unit at date t<sub>0</sub> and t<sub>1</sub> respectively; ln is the natural logarithm, and e represents the base of the natural logarithm (e = 2.71828). This rate expresses the annual proportion of change in each unit of land cover and land use.

#### ❖ Conversion rate

In order to quantify the change between the two dates, the conversion rate of each discriminated land-use class was calculated. The conversion rate measures the degree of conversion of a given unit into other landscape units between two dates t<sub>0</sub> and t<sub>1</sub>. It is obtained from the transition matrix (Arouna, 2012), according to the formula :

$$Tc = (S_{it} - S_{is}) / S_{it} * 100$$

S<sub>it</sub>: Area of the landscape unit at the initial date t; S<sub>is</sub>: Area of the same unit remaining stable at date t<sub>1</sub>

#### ❖ Speed of change of land use categories

In order to know the rate of change of in the identified land use categories (Agbanou *et al.*, 2018), the following formula was used:

$$\Delta s = S_{t1} - S_{it} / t_1 - t_i$$

Where:  $\Delta s$  = Rate of change (extension or regression in ha/year); **S<sub>it</sub>** = Area occupied by the occupation category considered in year 1 (ha); **S<sub>t1</sub>** = Area occupied by the occupation category considered in year 2 (ha); t<sub>i</sub> = year 1; t<sub>1</sub> = year 2.

## 2. Results

### 2.1. Discriminated units

Table 1 presents the quality evaluation indices of the classified images. It can be observed seen that the overall statistical accuracies of the classified images were between 90.23% and 97.14% with kappa indices ranging from 86.93% to 95.65% (Table 1). These indices were, respectively better in increasing chronological order. The Lake ecosystems of Lake Dang, Bini, Mballang and Ngaoundaba recorded the best overall accuracy and Kappa indices, respectively

**Table 1:** Quality assessment scores for classified image

	Lake Ecosystems	Overall accuracy (%)	Kappa (%)
1990	Lake Bini	96,78	95,30
	Lake Dang	97,14	95,65
	Lake Mballang	95,27	93,81

Comment [Ma18]: Not complete

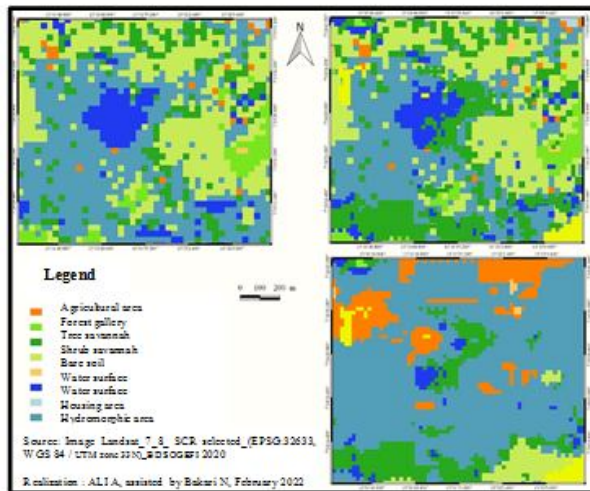
Formatted: Font: Bold, Font color: Auto

Comment [Ma19]: The reference is not relevant here

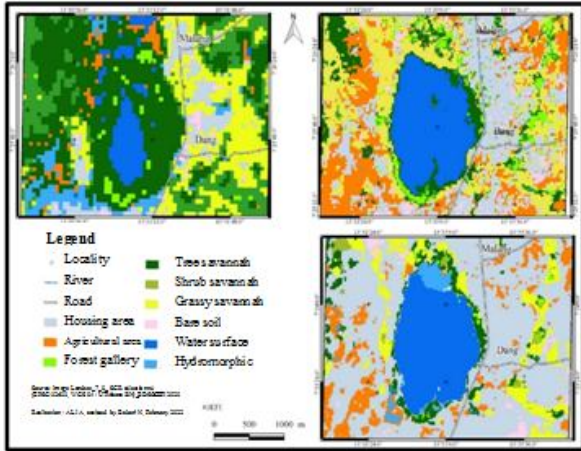
	Lake Ngaoundaba	93,52	92,09
2006	Lake Bini	96,11	94,64
	Lake Dang	97,05	95,56
	Lake Mballang	92,53	91,11
	Lake Ngaoundaba	90,23	88,85
2021	Lake Bini	95,84	94,37
	Lake Dang	96,47	94,99
	Lake Mballang	94,31	92,86
	Lake Ngaoundaba	92,64	91,22

## 2.2. Spatial distribution of land use and land cover units in 1990, 2006 and 2021

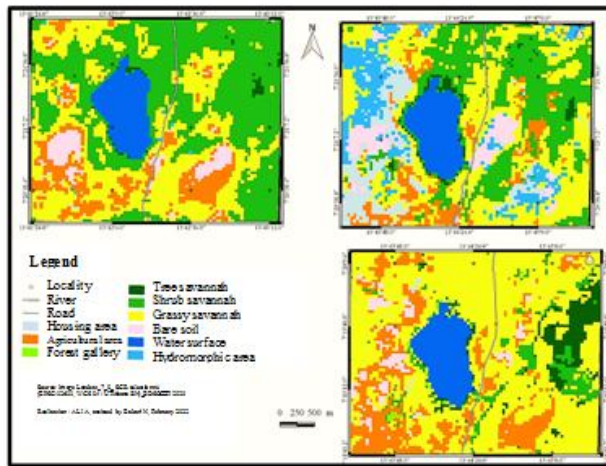
Figures 2, 3, 4 and 5 show the different land use changes in the four Lake ecosystems between 1990 and 2021. It is apparent that nine common land-use unit classes have been discriminated in the Lake ecosystems of Mballang (Fig. 4) and Dang (Fig. 3). These are agricultural space, forest gallery, tree savannah, shrub savannah, grassy savannah, bare soil, water surface, hydromorphic zone, and housing area. On the other hand, the Lake Bini ecosystem (Fig. 2) has eight land use and occupancy unit classes, including agricultural space, forest gallery, tree savannah, shrub savannah, bare soil, water surface, hydromorphic zone and housing area. The Ngaoundaba lake ecosystem (Fig. 5) presents the same land use and occupancy unit classes as the Bini lake ecosystem (Fig. 2), except for the agricultural area.



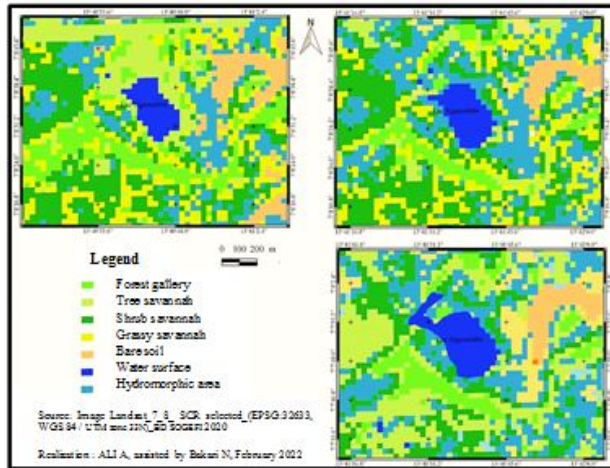
**Figure 2:** Spatial distribution of land use units in the Lake Bini ecosystem between 1990 and 2021



**Figure 3:** Spatial distribution of land use units in the Lake Dang ecosystem between 1990 and 2021



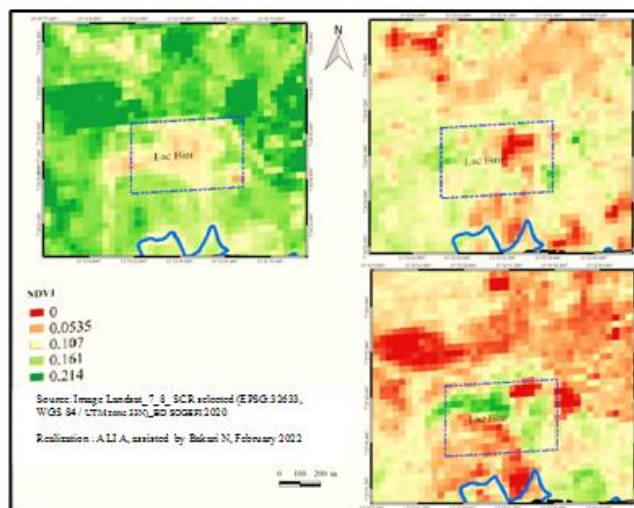
**Figure 4:** Spatial distribution of land use units in the Lake Mballang ecosystem between 1990 and 2021



**Figure 5:** Spatial distribution of land use units in the Lake Ngaoundaba ecosystem between 1990 and 2021

### 2.3 Estimation of the Normalized Differential Vegetation Index (NDVI)

The NDVI maps (Fig. 6; 7; 8; and 8) show a remarkable differences between the different years. The recorded values of the NDVI of Lake ecosystems varied from 0 to 0.214; from 0 to 0.214; from -0.116 to 0.326 and from -0.06 to 0.282, respectively for the Lake ecosystems of Lake Bini (Fig 6), Lake Dang (Fig 7), Mballang (Fig 8) and Lake Ngaoundaba (Fig 9). The low NDVI values were recorded at the level of the water bodies of the different lakes while the maximum values were recorded at the level of the riparian strips.



**Figure 6:** Spatial distribution of land use units in the Lake Bini ecosystem between 1990 and 2021

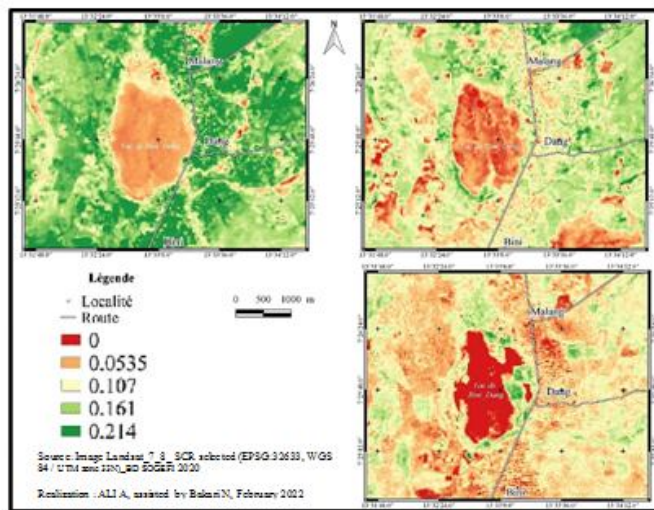


Figure 7: Spatial distribution of land use units in the Lake Dang ecosystem between 1990 and 2021.

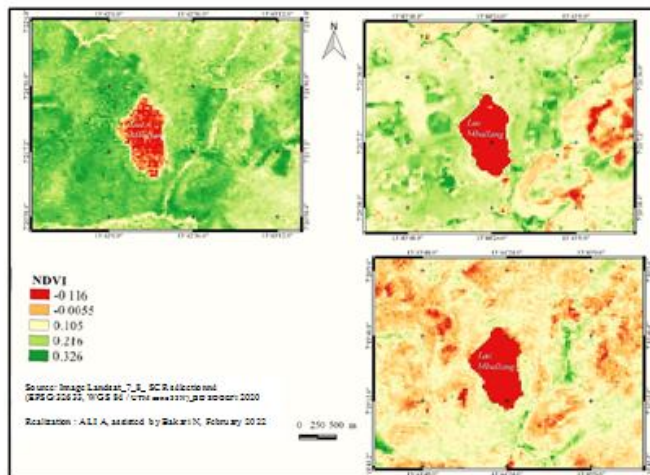


Figure 8: Spatial distribution of land use units in the Lake Mballang ecosystem between 1990 and 2021

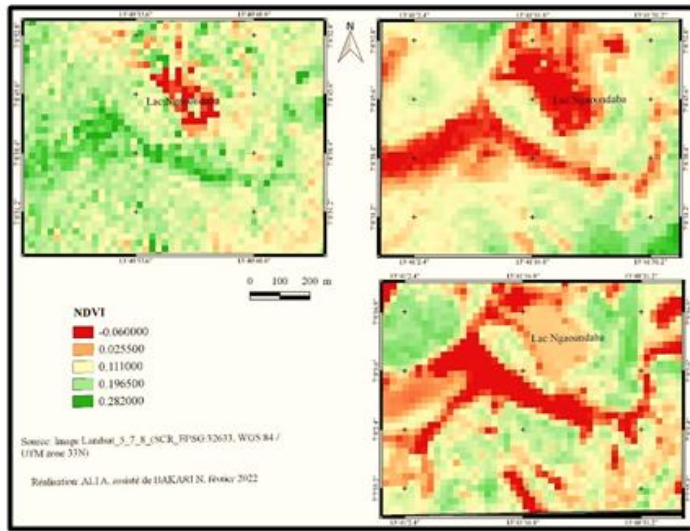
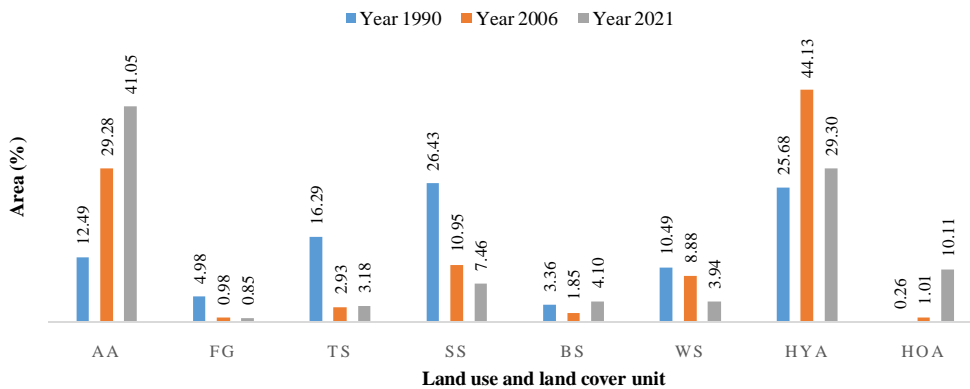


Figure 9: Spatial distribution of land use units in the Lake Ngaoundaba ecosystem between 1990 and 2021

#### 2.4. Dynamics of land use and land cover units

Figure 10 shows the different land use units of the Lake Bini lake ecosystem. Examination of this figure shows that in 1990, the shrub savannah (26.43%) followed by the hydromorphic zone (25.68 %) and tree savannah (16.29 %) recorded the largest areas compared to the habitation area (0.26 %). In 2006, the hydromorphic zone (44.13 %) was followed by the agricultural area (29.28 %) and the shrub savannah came in the first place to the detriment of the forest gallery (0.98%), which was the least represented. In contrast, in 2021, the agricultural area (41.05 ha) was followed by the hydromorphic zone (29.30%) and the residential area (10.11%). The forest gallery (0.85%) was the land use unit with the smallest surface area in 2021.



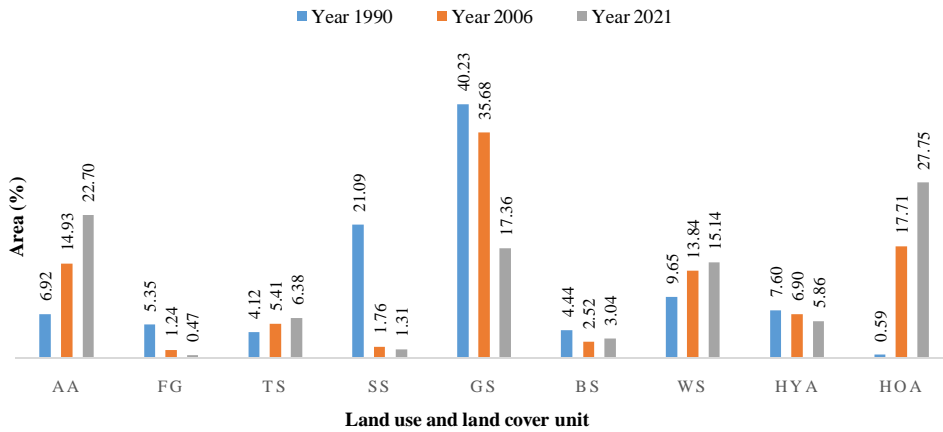
AA: Agricultural area, FG: Forest gallery, TS: Tree savannah, SS: Shrub savannah, GS: Grassy savannah, BS: Bare soil, WS: Water surface, HYA: Hydromorphic area, HOA: Housing area

Figure 10: Areas of different land use units in the Lake Bini lake ecosystem

For the Lake Dang lake ecosystem (Fig. 11), it can be observed that in 1990 the grassy savannah (40.23%) followed by the shrub savannah (21.29%) and the water area (9.65%) occupied more surface area compared to the residential area (0.59) which occupied the least surface area. In 2006, the grassy savannah (40.23%) followed by the residential area (21.09%) and the agricultural area (14.93%) occupies more surface area than the forest gallery (1.24%), which is poorly represented. On the other hand, in 2021 the residential area (27.75%), and

**Comment [Ma20]:** What about the grassy savannah? Say something and this comment apply to the whole explanation to Figure 10. Consider presenting it as it has been the case with the other figures i.e. the explanatory part

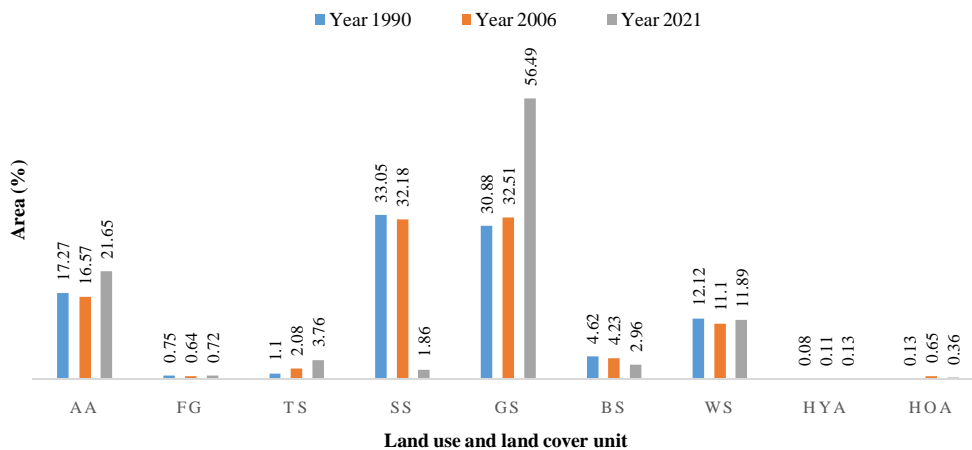
the agricultural area (22.70%) followed by the grassy savannah occupied more land to the detriment of the forest gallery (0.47%) which remained the least represented.



AA: Agricultural area, FG: Forest gallery, TS: Tree savannah, SS: Shrub savannah, GS: Grassy savannah, BS: Bare soil, WS: Water surface, HyA: Hydromorphic area, HoA: Housing area

Figure 11: Areas of different land use units in the Lake Dang Lake ecosystem

In 1990, the Lake Mballang lake ecosystem (Fig. 12) shows in 1990 a higher extent of land use units of the shrub savannah type (33.05%) followed by the grassy savannah (30.05%) and the agricultural area (17.27%). The smallest area in 1990 was noted in the hydromorphic zone (0.08%). The land use units in 2006 were dominated by grassy savannah (32.51 ha) followed by shrub savannah (32.05%) and agricultural area (16.57%). The forest gallery (0.64%) had the smallest area in 2006. In 2021, the grassy savannah (56.49%) was followed by the agricultural area (21.65%) and the water area (11.89%). The hydromorphic zone (0.13%) had the smallest area in 2021.

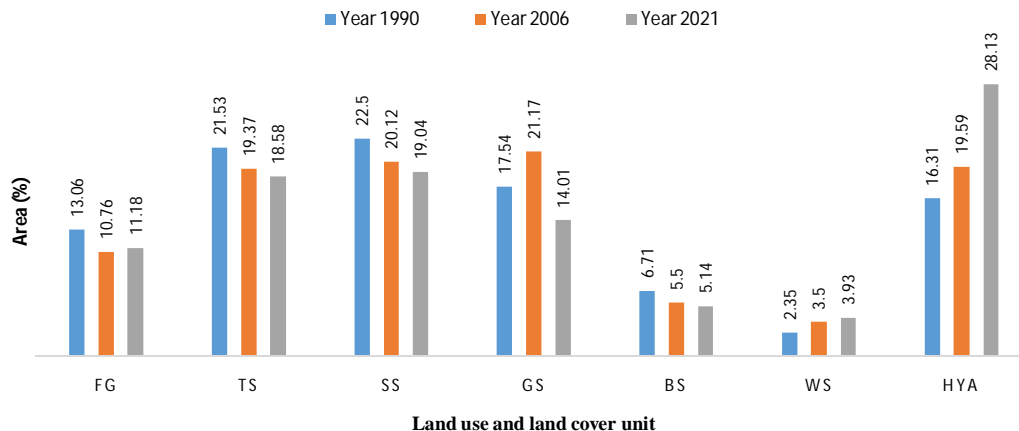


AA: Agricultural area, FG: Forest gallery, TS: Tree savannah, SS: Shrub savannah, GS: Grassy savannah, BS: Bare soil, WS: Water surface, HyA: Hydromorphic area, HoA: Housing area

Figure 12: Areas of the different land-use units in the Lake Mballang lake ecosystem

The most important land use unit at Lake Ngaoundaba (Fig 13) in 1990 was the shrub savannah (22.50%) followed by the tree savannah (21.53%) and the hydromorphic zone (16.31%). In 2006, the grassy savannah (21.17%)

followed by the shrub savannah (20.12%) and the tree savannah (19.37%) occupied the largest areas respectively. In 2021, the hydromorphic zone (28.13%) was followed by shrub savannah (19.04%) and tree savannah (19.37%). In addition, the water surface occupied the smallest areas for the years 1990, 2006 and 2021, i.e. 2.35%; 3.50% and 3.93% respectively.



AA: Agricultural area, FG: Forest gallery, TS: Tree savannah, SS: Shrub savannah, GS: Grassy savannah, BS: Bare soil, WS: Water surface, HyA: Hydromorphic area, HoA: Housing area

**Figure 13:** Areas of the different land use units of the Lake Ngaoundaba lake-ecosystem

**Comment [Ma21]:** Provide an explanation to Figure 13 as it has been the case with the other Figures. Need for consistency.

## 2.5. Typology of the dynamics of change from 1990 to 2021

Table 2 shows the diachronic analysis of the typology of the land use units of the lake ecosystems of Lake Bini, Lake Dang, Lake Mballang and Lake Ngaoundaba during the periods from 2021 to 1990; from 2021 to 2006 and from 2006 to 1990.

The analysis of this table 2 shows that in the Bini lake ecosystem, the agricultural space, the bare soil and the hydromorphic zone have evolved progressively to the detriment of the forest gallery, the tree savannah, and the shrub savannah and the water surface, which have gone into decline.

However, in the Lake Dang lake ecosystem, the agricultural space, the tree savannah, the water surface and the housing area have progressively gone to the detriment of the forest gallery, the shrub savannah, the grassy savannah and the hydromorphic area. However, in the Lake Mballang lake ecosystem, the agricultural area, the shrub savannah, the grassy savannah and the hydromorphic zone have progressively increased at the expense of the shrub savannah and the soil. On the other hand, in the Lake Mballang lake ecosystem, the forest gallery and the water surface described a progressive dynamic exclusively during the periods 2021 to 2006 and regressive from 2006 to 1990. On the other hand, the Ngaoundaba lake ecosystem shows that the water surface and the hydromorphic zone record a progressive dynamic to the detriment of the tree and shrub savannah and the bare soil which are regressive. On the other hand, the forest gallery showed a progressive dynamic during from the period 2021 to 2006.

**Comment [Ma22]:** I find the order to be confusing. You may have a better explanation as to why this order.

**Comment [Ma23]:** Find a better way of starting this paragraph

**Table 2:** Change in the area of land use units of the lake ecosystems studied

**Comment [Ma24]:** Rephrase this whole paragraph and avoid the repetition of the same word or words e.g. however, on the other had etc.

**Comment [PP25]:** Re-allocate after the first paragraph

	Land use unit	Evolution 2021-1990 (Ha)		Superficie 2021-2006 (Ha)		Superficie 2006-1990 (Ha)	
Lake de Bini	Agricultural space	24,40	Progressive	10,06	Progressive	14,34	Progressive
	Forestry gallery	-3,53	Regressive	-0,11	Regressive	-3,42	Regressive
	Wooded savannah	-11,20	Regressive	0,22	Progressive	-11,42	Regressive
	Shrubby savannah	-16,21	Regressive	-2,98	Regressive	-13,22	Regressive

**Comment [PP26]:** Consider the use of point and not comma. This observation is to the whole Table 2

	Bare ground	0,63	Progressive	1,92	Progressive	1,29	Progressive
	Water surface	-5,60	Regressive	-4,22	Regressive	-1,38	Regressive
	Hydromorphic zone	3,09	Progressive	-12,67	Regressive	15,75	Progressive
	Residential area	8,42	Progressive	7,78	Progressive	0,65	Progressive
Lake de Dang	Agricultural space	24,38	Progressive	12	Progressive	12,38	Progressive
	Forestry gallery	-7,53	Regressive	-1,19	Regressive	-6,34	Regressive
	Wooded savannah	3,49	Progressive	1,5	Progressive	1,99	Progressive
	Shrubby savannah	-30,56	Regressive	-0,7	Regressive	-29,86	Regressive
	Grassland savannah	-35,34	Regressive	-28,31	Regressive	-7,03	Regressive
	Bare ground	-2,17	Regressive	0,8	Progressive	-2,97	Regressive
	Water-body	8,48	Progressive	2	Progressive	6,48	Progressive
	Hydromorphic zone	-2,70	Regressive	-1,60	Regressive	-1,09	Regressive
	Residential area	41,95	Progressive	15,51	Progressive	26,44	Progressive
Lake Mballang	Agricultural space	16,72	Progressive	19,41	Progressive	-2,68	Regressive
	Forestry gallery	-0,12	Regressive	0,31	Progressive	-0,43	Regressive
	Wooded savannah	10,17	Progressive	6,42	Progressive	3,75	Progressive
	Shrubby savannah	-118,13	Regressive	-114,80	Regressive	-3,33	Regressive
	Grassland savannah	97,78	Progressive	91,55	Progressive	6,23	Progressive
	Bare ground	-6,62	Regressive	-4,84	Regressive	-1,78	Regressive
	Water surface	-0,88	Regressive	3,01	Progressive	-3,89	Regressive
	Hydromorphic zone	0,21	Progressive	0,09	Progressive	0,12	Progressive
	Residential area	0,87	Progressive	-1,13	Regressive	2,00	Progressive
Lake Ngaoundaba	Forestry gallery	-5,24	Regressive	1,18	Progressive	-6,42	Regressive
	Wooded savannah	-8,25	Regressive	-2,19	Regressive	-6,05	Regressive
	Shrubby savannah	-9,67	Regressive	-3,01	Regressive	-6,65	Regressive
	Grassland savannah	-9,86	Regressive	-20	Regressive	10,14	Progressive
	Bare ground	-4,38	Regressive	-1,03	Regressive	-3,35	Regressive
	Water surface	4,40	Progressive	1,21	Progressive	3,19	Progressive
	Hydromorphic zone	33,00	Progressive	23,84	Progressive	9,15	Progressive

## 2.6. Conversion and expansion rates of occupancy units

Table 3 presents the rate of conversion and expansion of land use units of the studied lake ecosystems during the periods 2021 to 1990; 2021 to 2006 and 2006 to 1990.

The rate of conversion and expansion at the Lake Bini lake ecosystem (Table 3) is highest at in the settlement area followed by the agricultural area and bare ground. However, the rate of conversion and expansion was lowest during the period 2021 to 1990 at the gallery forest unit followed by the shrub and tree savannah. The rate of conversion and expansion of land use units in the Lake Dang Lake ecosystem on the other hand showed that during the periods 2021 to 1990; 2021 to 2006 and 2006 to 1990, the rate of conversion and expansion was highest at in the settlement area followed by the agricultural area. These rates were lower in the forest gallery unit followed by the tree and shrub savannah.

The rate of conversion and expansion of land use units in the Lake Mballang lake ecosystem (Table 3) showed that during the periods 2021 to 1990; 2021 to 2006 and 2006 to 1990, the rate of conversion and expansion was the highest in the shrub savannah, the habitation area. In contrast, these rates were lower in the shrub savannah and bare ground units. The rate of conversion and expansion of the land use units of the Lake Ngaoundaba lake ecosystem (Table 3) showed that during the periods 2021 to 1990; 2021 to 2006 and 2006 to 1990, the rate of conversion and expansion was highest in the hydromorphic zone and the water surface. However, these rates were lower in the bare soil unit followed by the grassy savannah.

**Table 3:** Conversion and expansion rates of land use and land cover units in the Bini lake ecosystem

Land use units	Conversion rate			Expansion rate		
	2021-1990	2021-2006	2006-1990	2021-1990	2021-2006	2006-1990
Agricultural space	227,98	40,23	133,89	3,83	2,25	5,31

**Comment [PP27]:** Find a better way of presenting this as its a repeat of what is in the first paragraph of section 2.6

**Comment [PP28]:** Refer to comment PP27

**Comment [PP29]:** Refer to comment PP27

**Comment [PP30]:** Consider moving the Table below the first paragraph of section 2.6

**Comment [PP31]:** Consider using a point instead of the comma throughout the table. Need for consistency throughout the document

	Foresty gallery	-82,92	-13,33	-80,29	-5,70	-0,95	-10,15
	Wooded savannah	-80,38	8,80	-81,97	-5,25	0,56	-10,71
	Shrubby savannah	-71,78	-31,89	-58,57	-4,08	-2,56	-5,51
	Bare ground	36,03	146,84	-44,89	0,99	6,02	-3,72
	Water surface	-62,00	-55,38	-14,83	-3,12	-5,38	-1,00
	Hydromorphic zone	33,49	-22,99	73,34	0,93	-1,74	3,44
	Residential area	3863,30	900,00	296,33	11,87	15,35	8,61
Lake Dang	Agricultural space	227,98	52,02	115,75	3,83	2,79	4,81
	Foresty gallery	-91,19	-62,10	-76,74	-7,84	-6,47	-9,12
	Wooded savannah	54,85	11,28	39,15	1,41	0,71	2,06
	Shrubby savannah	-93,80	-25,74	-91,65	-8,97	-1,98	-15,52
	Grassland savannah	-56,86	-51,36	-11,31	-2,71	-4,80	-0,75
	Bare ground	-31,49	21,45	-43,59	-1,22	1,30	-3,58
	Water surface	56,94	9,35	43,52	1,45	0,60	2,26
	Hydromorphic zone	-22,92	-15,05	-9,26	-0,84	-1,09	-0,61
	Residential area	4559,13	56,68	2873,59	12,39	2,99	21,20
Lake Mballang	Agricultural space	25,37	41,90	-11,65	0,73	2,33	-0,77
	Foresty gallery	-4,10	12,56	-14,80	-0,13	0,79	-1,00
	Wooded savannah	242,08	80,72	89,29	3,97	3,95	3,99
	Shrubby savannah	-94,37	-94,22	-2,64	-9,28	-19,00	-0,17
	Grassland savannah	82,95	73,78	5,28	1,95	3,68	0,32
	Bare ground	-35,88	-29,98	-8,42	-1,43	-2,38	-0,55
	Water surface	-1,89	7,10	-8,40	-0,06	0,46	-0,55
	Hydromorphic zone	70,00	-90,59	1706,67	1,71	-15,76	18,09
	Residential area	178,13	-45,48	410,17	3,30	-4,04	10,18
Lake Ngaoundaba	Foresty gallery	-14,38	3,94	-17,62	-0,50	0,26	-1,21
	Wooded savannah	-13,72	-4,38	-9,77	-0,48	-0,30	-0,64
	Shrubby savannah	-15,39	-5,30	-10,66	-0,54	-0,36	-0,70
	Grassland savannah	-20,13	-33,84	20,72	-0,73	-2,75	1,18
	Bare ground	-23,82	-7,19	-17,92	-0,88	-0,50	-1,23
	Water surface	51,90	2,20	48,63	1,35	0,15	2,48
	Zone hydromorphe	72,47	43,61	20,10	1,76	2,41	1,14

## 2.7. Extent of change in land use units

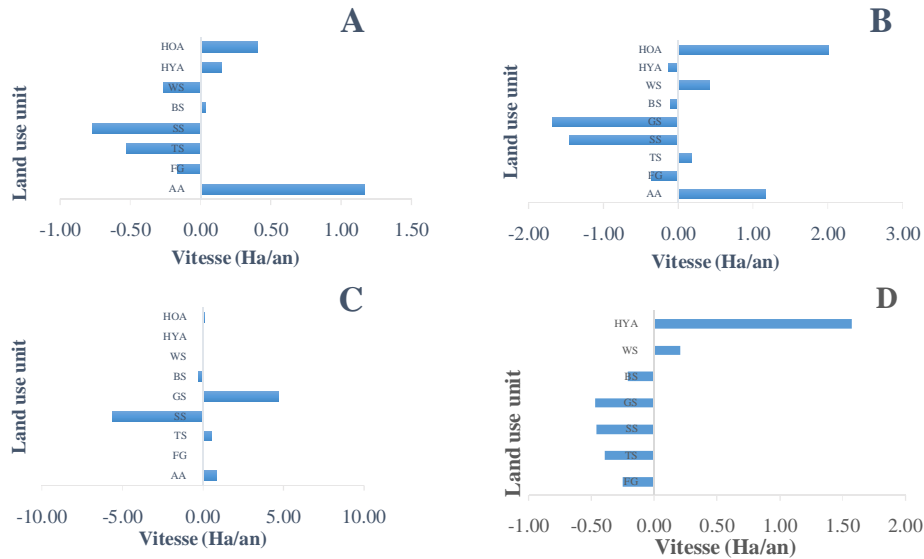
Figure 14 shows the extent of change in the land use units of the Lake ecosystems of Lake Bini (Fig 14 A), Lake Dang (Fig 14 B), Lake Mballang (Fig 14 C), and Lake Ngaoundaba (Fig 14 D) from 1990 to 2021.

In the Lake Bini ecosystem (Fig. 14 A), all land use units experienced significant change, both positive and negative. The agricultural area (1.16 Ha/year) followed by the residential area (0.40 Ha/year) experienced the highest acceleration. On the other hand, the lowest acceleration between 1990 and 2021 was observed in the forest gallery (0.17 Ha/year) followed by bare soil (0.03 Ha/year).

In the Lake Dang ecosystem (Fig. 14 B), the residential area (2.00 Ha/year) followed by the agricultural area (1.16 Ha/year) recorded the highest rates of change. On the other hand, the slowest rates of change were in the bare soil (-0.13 Ha/year) and the hydromorphic area (-0.10 Ha/year).

For the Lake Mballang ecosystem (Fig. 14 C), the grassy savannah (4.66 Ha/year) followed by the agricultural area (0.80 Ha/year) showed the highest rates of change. However, the lowest velocities were noted in the Forest Gallery (-0.01 Ha/year) and the water surface (-0.04 Ha/year), respectively.

For the Lake Ngaoundaba ecosystem (Fig 14 D), the hydromorphic zone (1.57 Ha/year) followed by the water surface (0.21 Ha/year) recorded the highest velocities. ~~On the other hand,~~ the lowest velocities were recorded in the bare soil (-0.21 Ha/year) and the forest gallery (-0.25 Ha/year) respectively.



AA: Agricultural area, FG: Forest gallery, TS: Tree savannah, SS: Shrub savannah, GS: Grassy savannah, BS: Bare soil, WS: Water surface, HyA: Hydromorphic area, HoA: Housing area

**Figure 14:** Rate of change of land use units in the lake ecosystems of Lake Bini (A), Lake Dang (B), Lake Mballang (C), and Ngaoundaba (D)

Comment [PP32]:

Comment [PP33]: Move the Figure 14 to below the first paragraph of section 2.7

## 2. Discussion

Spatio-temporal dynamics can be seen as a process of permanent occupation of a territory by various land use and occupation units in space and time. Diachronic analysis based on spot satellite images from 1990, 2006 and 2021 has enabled the studys to assess the evolution of the various landscape units over a period of thirty-one years. The overall statistical accuracy of the classified images rangeds from 90.23 to 97.14% with kappa indices varying from 86.93 to 95.65%. In the present study, the Kappa index wais above 50% and the lowest value wasis 88%. In the study of land cover, when the Kappa index evaluated in the classification operations is between 50 and 75%, the adopted classification is valid and the results can be used judiciously (Pontius, 2000). The different evaluation results of the images classified by the supervised classification method weare, therefore, validated and could be explained by the ability of the sensors to generate good images during low cloud cover. These results could be explained by the ability of these environments to allow several elements to coexist within the ecosystem that they constitute. These results weare closer to 98.86% with kappa indices varying from 85.65 to 97.35% on the spatiotemporal dynamics of land cover in three protected areas in Burkina Faso, those of Moussa Ganame, (2021) who reported overall statistical accuracies of classified images ranging from 88.90% to 98.86% with kappa indices varying from 85.65 to 97.35% on the spatiotemporal dynamics of land cover in three protected areas in Burkina Faso.

Comment [PP34]: Rephrase as its confusing with the full stop

The fairly large number of land use and occupancy unit classes in the four lake ecosystems (9 classes in Lake Mballang, 9 classes in Lake Dang, 8 classes in Lake Bini and 7 classes in Lake Ngaoundaba) shows a diversity in the lake ecosystem landscape. These units are not always well differentiated, probably because of the close spectral responses of these natural and particularly woody plant formations. These difficulties have been encountered by several authors and even in other countries (Avakoudjo *et al.*, 2014; Mamane *et al.*, 2018). These difficulties could be related to the homogeneous plots when choosing training sites. However, despite these difficulties, the results obtained remain exploitable. Similar results, which discriminate a maximum of 9 land use and occupation unit classes on the banks of the Gbaga Lagoon in West Africa, were also reported by Ahehehinnou *et al.* (2020).

Comment [PP35]: Find a better word

Comment [PP36]: Refer to comment PP35

Comment [PP37]: Refer to comment 35

The estimation of NDVI from the maps of spatiotemporal dynamics revealed a regression of the vegetation of lake ecosystems. The recorded NDVI values of the lake ecosystems varied from 0 to 0.214; from 0 to 0.214; from -0.116 to 0.326 and from -0.06 to 0.282, respectively, for the lake ecosystems of Lake Bini, Lake Dang, Lake Mballang and Lake Ngaoundaba. The larger NDVI differences at the Lake Mballang (-0.116 to 0.326) and Lake Ngaoundaba (-0.06 to 0.282) lake ecosystems could be explained by the variation in vegetation density and edaphic parameters across these ecosystems. The authors revealed that vegetation could significantly reduce the temperature if NDVI exceeded 0.35 (Mackey *et al.*, 2012). In the our study, the results showed a strong decrease in vegetation over time. Consequently, the reduction of vegetation cover increases the soil surface temperatures of lake ecosystems.

Comment [PP38]:

Comment [PP39]: Which authors are these, rephrase as you and your friends are also an authors.

The evolution of land use and land cover units showed changes in the area of land use units in general and in vegetation cover in the years 1990, 2006 and 2021. In general, in 1990 the savannahs (shrub savannah, tree savannah and grass savannah) were the most extensive units. In 2006 and 2021, agricultural space, housing area, bare soil and hydromorphic area were gaining ground to the detriment of savannah and forest gallery. These results could be explained by the growth in demography and the increase in poverty, which leads, respectively, to the extension of agricultural areas and the search for habitable areas with low land value. The expansion of these units had encroached on areas previously occupied by natural formations, such as savannahs and gallery forests. These results confirm the findings of Gauze *et al.* (2019) on the Characterisation of land use dynamics and morphology of the Aby Lagoon in the Ehotile Islands National Park area; South-East of Côte d'Ivoire, Bamba *et al.* (2008) on Influence of anthropogenic actions on the spatio-temporal dynamics of land use in the Bas-Congo province (D.R. Congo).

Spatial and temporal dynamics are expressed in terms of regression, stability or progression of land-use units, hence the notion of typology. The typology of the dynamics of change from 1990 to 2021 shows that the agricultural space, the housing area, bare soil and the hydromorphic zone describe a progressive dynamic to the detriment of the forest gallery, the wooded savannah, the shrubby savannah and the water surface which have gone into regression. These results would be the result of strong pressures on the resources of the banks of the studied lake ecosystems for the satisfaction of different needs. The wetlands as a space with a high potential for life has have favoured the immigration and settlement of people from dry areas for grazing, watering animals and fishing. This situation leads to the uncontrolled occupation of lake ecosystems by people who largely encroach on the riparian vegetation, which provides enormous ecosystem services. These results are similar to those of Tente (2005) who worked in the forest of Eastern Cameroon and showed that other types of vegetation formation are progressing while others are regressing. This also confirms well the results of Mama *et al.* (2003), Tente (2005), Orékan (2007) and Arouna (2012) concerning the regression of dense vegetation formations in favour of agricultural spaces.

The rate of conversion and expansion of the land use units of the lake ecosystems studied shows in general that during the periods from 2021 to 1990, the rate of conversion and expansion is higher in the residential area followed by the agricultural area. This clear difference in the rate of conversion and expansion of the land use units of the four lake ecosystems studied could be explained by the fact that anthropogenic action was more likely to be directed towards agriculture and urbanisation while neglecting the environmental aspect. Agriculture is the main source of deforestation. Similarly, similar results have also been observed in several other localities in Cameroon (Solefack *et al.*, 2018; Temgoua, *et al.*, 2018b).

Comment [PP40]: Consider using another word

In general, the speed of the dynamics over the last 31 years has revealed progressive degradation in the grassy savannah, the residential area, the agricultural area and the hydromorphic area. These degradations have been at the expense of the shrub savannah, the tree savannah and the forest gallery. These plant formations have been degraded at a considerable rate. The causes of the degradation of the vegetation cover are anthropogenic and can also be climatic when the ecological zone does not benefit from the minimum rainfall that should allow the spontaneous reconstitution of plant formations, which is increasingly observed with climate change (Adjonou *et al.*, 2010). In addition, agricultural activities are the major causes of vegetation degradation (Nguimdo, 2017; Solefack *et al.*, 2018; Temgoua *et al.*, 2018b). However, this regression of shrubby savannahs, trees and forest gallery-galleries would be accompanied by the loss of biodiversity and land degradation.

Formatted: List Paragraph, Indent: Left: 0", Outline numbered + Level: 1 + Numbering Style: 1, 2, 3, ... + Start at: 1 + Alignment: Left + Aligned at: 0.49" + Indent at: 0.74"

Formatted: Font: (Default) Times New Roman, 10 pt, Bold

### 3. Conclusion

The study of the spatio-temporal dynamics of land use in four lake complexes in the Vina Department (Adamaoua-Cameroon) showed that the natural plant formations (shrubby savannah, trees and forest gallery) had undergone a strong regressive dynamic to the benefit of anthropogenic formations (the residential area and the agricultural space). The regression of these vegetation formations on the banks was due to several factors, the most important of which were population growth, the extension of cultivated areas and logging. This destruction of plant cover leads to an imbalance in the natural resource cycle, soil degradation and, above all, the loss of ecosystem

services and biodiversity. These results call on the various actors or decision-makers in charge of wetland management to consider restoration methods. This makes clear the urgent need to establish integrated and participatory management strategies at both local and regional levels to preserve and control lake ecosystems more effectively. They also contribute to a better knowledge of the predictions on the evolution of these ecosystems expected from different socio-economic scenarios and to ensure resilience.

**Comment [PP41]:** How about the formulation, review of the relevant policy (policies) and its enforcement ?

#### 4. REFERENCES

1. **Agbanou B. T., Orekan V., Abdoulaye D., Martin P., Tente B. 2018.** Spatio-temporal dynamics of land use in extensive agriculture: the case of the Natitingou-Boukoumbe sector in northwestern Benin. Mixtures in homage to Professors Thomas Omer, Houssou Sègè Christophe and Houndaga Cossi Jean. La géographie au service du développement durable, AbomeyCalavi, Benin. 22-34pp. hal-02092545.
2. **Ahehinnou Y. M. F., Amoussou E., Allagbe B. S. Y., Vissin E. W., 2020.** Spatio-Temporal Dynamics of the Occupation of the Banks of the Gbaga Lagoon (West Africa). *International Journal of Progressive Sciences and Technologies*. 22 (2), 235-243pp.
3. **Arouna O., 2012.** Mapping and predictive modelling of spatio-temporal changes in vegetation in the Commune of Djidja, Benin: implications for land use planning. Unique PhD thesis, Geography and Environmental Management. EDP/FLASH/UAC, Benin, 246p.
4. **Avakoudjo J, Mama A, Toko I, Kindomhou V, Sinsin B. 2014.** Land use dynamics in the National Park and its periphery in northwest Benin. *Int. J. Biol. Chem. Sci*, 8(6): 2608- 2625pp.
5. **Bamba I, Mama A., Neuba D. F. R., Koffi K. J., Traoré D., Visser M., Sinsin B., Lejoly J. and Bogaert J., 2008** "Influence des actions anthropiques sur la dynamique spatiotemporelle de l'occupation du sol dans la province du Bas-Congo (R.D. Congo)" *Sciences & Nature* 5 (1) 49-60pp
6. **Bastviken, D., Tranvik, L. J., Downing, J. A., Crill, P. M. & Enrich-Prast, A, 2011.** Freshwater methane emissions offset the continental carbon sink. *Science* 331, 50p.
7. **Bernier B., 1992.** Introduction to macroeconomics. Paris, Dunod, France, 217p.
8. **Chaplin-Kramer R., Sharp R.P., Mandle L., Sim S., Johnson J., Butnar I., Mila C.L., Eichelberger B.A., Ramler I., Mueller C., McLachlan N., Yousefi A., King H., & Kareiva P.M., 2015.** Spatial patterns of agricultural expansion determine impacts on biodiversity and carbon storage. *Proceedings of the National Academy of Sciences of the United States of America*, 112: 7402-7407pp.
9. **De Graaf, G., Bartley, D., Jorgensen, J. & Marmulla, G. 2012.** The scale of inland fisheries, can we do better? Alternative approaches for assessment. *Fisheries Manag. Ecol.* 1, 64-70p.
10. **Dodson, S. I., Arnott, S. E. & Cottingham, K. L. 2000.** The relationship in lake communities between primary productivity and species richness. *Ecology* 81, 2662-2679p.
11. **Downing, J. A. et al. 2008.** Sediment organic carbon burial in agriculturally eutrophic impoundments over the last century. *Global Biogeochem. Cycles* 22, 10-18pp.
12. **FAO, 2011.** State of the World's Forests 2011.
13. **Gauze Touao Kah Martine, KOUASSI Kouakou Lazare and MALAN Djah François, 2019.** "Characterisation of the land use dynamics and morphology of the Aby lagoon in the space of the Ehotile Islands National Park; South-East of Côte d'Ivoire", *European Scientific Journal*, 15, 11-26pp.
14. **Halima G. and Djamel A. 2020.** Estimation of the impact of green spaces and water surfaces on urban climate and soil surface temperature (mila, algeria). *Rev. Roum. Geogr./Rom. Journ. Geogr.* 64, (2), 155-174pp.
15. **Inoussa M.M., Mahamane A., Mbow C., Saadou M., & Yvonne B., 2011.** Spatiotemporal dynamics of open forests in the W National Park of Niger (West Africa). *Sécheresse*, 22 :108-116pp.
16. **Leimgruber L., Kelly D.S., Steininger M.K., Brunner J., Müller T., & Songer M., 2005.** Forest cover change patterns in Myanmar (1990-2000). *Environmental Conservation*, 32p.
17. **Mackey, Christopher, Lee, Xuhui, Smith, Ronald (2012),** Remotely sensing the cooling effects of city scale efforts to reduce urban heat island, *Building and Environment*, 49, 348-358 pp.

**Formatted:** List Paragraph, Indent: Left: 0", Outline numbered + Level: 1 + Numbering Style: 1, 2, 3, ... + Start at: 1 + Alignment: Left + Aligned at: 0.49" + Indent at: 0.74"

- 18. Mama A., Sinsin B., De C.C., & Bogaert J., 2013.** Anthropisation and landscape dynamics in the Sudanian zone of northern Benin. *Tropicultura*, 31(1) :78-88pp.
- 19. Mamane B, Amadou G, Barrage M, Comby J, Ambouta JMK. 2018.** Spatiotemporal dynamics of land use in the Tamou Total Wildlife Reserve in a context of climatic variability (Western Niger). *Int. J. Biol. Chem. Sci.* 12(4): 1667-1687pp.
- 20. Messenger L. M., Lehner B., Grill G., Nedeva I. & Schmitt O., 2016.** Estimating the volume and age of water stored in global lakes using a geo-statistical approach. *Nature communications*, DOI: 10.1038/ncomms13603.
- 21. Moussa Ganame, 2021.** Spatio-temporal dynamics and potential of the aerial carbon stock of forest ecosystems in Burkina Faso. Doctorate from the University Joseph KI-ZERBO. 167p.
- 22. Muller Schmied, H. et al, 2014.** Sensitivity of simulated global-scale freshwater fluxes and storages to input data, hydrological model structure, human water use and calibration. *Hydrol. Earth. Syst. Sci.* 18, 3511-3538p.
- 23. Nguimdo V. 2017.** Dynamics of deforestation, degradation and carbon stocks in the Teaching and Research Forest of the University of Dschang in Bélabo, East Cameroon. Dissertation of Engineer of Water, Forestry and Hunting Design, University of Dschang, 79p
- 24. Nõges, T. 2009.** Relationships between morphometry, geographic location and water quality parameters of European lakes. *Hydrobiologia* 633, 33-43pp.
- 25. Orekan V.O.A., 2019.** Dynamics of land use in the Savalou classified forest in Benin. Regard Sud. 19p.
- 26. Post, D. M., Pace, M. L. & Hairston, N. G. 2000.** Ecosystem size determines foodchain length in lakes. *Nature* 405, 1047-1049pp.
- 27. Solefack MC, Njouonkou AL, Temgoua LF, Djouda R, Zangmene JB, Ntoupka M. 2018.** Land-Use/ Land-Cover change and Anthropogenic Causes Around Koup Matapit Gallery Forest, West-Cameroon. *Journal of Geography and Geology*, 10(2): 201-219pp.
- 28. Staehr, P. A., Baastrup-Spohr, L., Sand-Jensen, K. & Stedmon, C. 2012.** Lake metabolism scales with lake morphometry and catchment conditions. *Aquat. Sci.* 74, 155-169p.
- 29. Staehr, PA, Baastrup-Spohr, L., Sand-Jensen, K. & Stedmon, C. 2012.** Lake metabolism changes with lake morphometry and catchment conditions. *Aquat. Sci.* 74, 155-169p.
- 30. Temgoua LF, Ajonina G, Woyu HB. 2018a.** Land Use and Land Cover Change Analysis in Ajei Upland Waterched Community Forest, North West Region, Cameroon. *Journal of Geoscience and Environment Protection*, 6(09): 83-99pp.
- 31. Tente B., 2005:** Recherche sur les facteurs de la diversité floristique des versants du massif de l'Atacora: Secteur Perma-Toucouontouna (Bénin). Thèse de doctorat unique. EDP/FLASH/UAC, 252 p.
- 32. Tilahun A., & Islam Z., 2015.** Google earth for Land Use Land Cover Change detection in the case of Gish Abbay Sekela, West Gojjam, Amhara State, Ethiopia. *International Journal of Advancement in Remote Sensing, GIS and Geography*, 3 (2):80-87pp.
- 33. Touchart L., 2002.** Limnologie physique et dynamique: une géographie des lacs et des étangs. Harmattan, Paris, p.60
- 34. Vittek M., Brink A., Donnay F., Simonetti D., & Desclée B., 2014.** Land Cover Change Monitoring Using Landsat MSS/TM Satellite Image Data over West Africa between 1975 and 1990. *Remote Sensing*, 6: 658-676pp.

**Comment [PP42]:** This is a repeat of the reference above (28)