

Hydrological Investigation and Characterization of Sokouraba Watershed, Burkina Faso.

Abstract:

The present study focuses on the hydrological study and the characterization of Sokouraba watershed (BV) in order to better understand the functioning of the hydrographic networks as well as the quantity of water likely to be used for the realization of a dam in this watershed. According to the hydrologic analysis results, during the period of 1960 to 2019, the annual precipitation values range from 347,3 to 1596,6 mm with an average of 1099,28 mm. The maximum daily rainfall values for the same period vary between 42 and 287 mm with an average of 82.85 mm. The values of wet decennial and wet quinquennial rainfall are respectively 1380 and 1280 mm. The dry five-year and dry ten-year rainfall values are 917 mm and 821 mm respectively. According to the watershed characterization results, the calculated Sokouraba watershed surface is 77,34 Km² and its perimeter is 44,3 Km. The values of the length and the width of the equivalent rectangle of the basin are respectively 17,81 Km and 4,34 Km. The longitudinal slope and the overall slope index values are 3.24 m/km and 3.20 m/Km respectively. The value of the corrected overall slope index of the watershed is 7.05 m/Km while those of Gravelius compactness index is 1.42. This value of K_G higher than 1 indicates that the watershed of sokouraba is of elongated shape. The specific gradient value of the watershed is 61.99. This value is included between 50 and 100 m, thus according to the classification of the reliefs according to the latter, the relief of the catchment area of Sokouraba can be qualified as moderate. The values of the length of the main watercourse and the total length of the watercourses calculated are respectively 15,41Km and 63,25 Km. The calculated value of drainage density of the catchment area is 0.21 Km⁻¹. The value of the attenuation coefficient and the ten-year rainfall calculated in this study are 0,78 and 100,062 mm respectively. The value of the decennial runoff coefficient thus calculated is 27,83 %.

Keywords: *Watershed; Hydrographic network; Dam; Rainfall.*

Introduction

In Africa, the economic development of most countries is dependent on agriculture and livestock. Modernization of the primary sector, which is highly dependent on rainfall, is necessary to boost development. This is why the mobilisation of surface water is a major concern for developing countries and more particularly for Sahelian countries where, rainfall is relatively low but also characterised by an unequal spatial and temporal distribution [1]. Indeed, in most of these Sahelian countries the water problem is one of the greatest concerns that threaten economic and social development. The rainfall deficit due to insufficient and irregular rainfall intensifies the difficulties related to access to water. The control of the hydrological functioning of watersheds is one of the solutions that can allow a coherent and adequate control and management of surface water resources. Most of watersheds studies were aimed at good control of water for its conservation and protection against the risks it can cause [2].

Burkina Faso, a landlocked country in the Sudano-Sahelian zone, is not immune to this situation of rainfall precariousness to the point of being placed in a situation of water stress. This rainfall deficit has led to a situation of severe water stress in the region in general and in Burkina Faso in particular, which has been affected by this continuous drought situation [3]. The country is further subject to climatic hazards that make water resources more unavailable [4]. In addition, the population size has increased from 10,312,000 in 1996 to about 20,000,000 in 2019 [5]; [6]; [7]. One of the corollaries of this galloping demography is the increased demand for water. In this country, which is representative of the Sudano-Sahelian zone, since it is framed in latitude by the

400 mm and 1300 mm interannual isohyets, an in-depth study of the long-term rainfall series and its repercussions is essential ([8]).

In this country, climate specialists predict an increase in average temperatures of 0.8°C by 2025 and 1.7°C by 2050, a decrease in rainfall of -3.4% in 2025 and -7.3% in 2050 [9]. The consequences of these climate changes include a marked decrease in water availability, a regression in biomass potential, a drastic reduction and degradation of pastures. The work carried out by Mahé et al. [10] about the climatic and anthropogenic impact on the Nakambe runoff in Burkina Faso shows that the Nakambe basin in Wayen occupies an area of nearly 21,000 km² in the Sahelian domain. Despite the decrease in rainfall since 1970, its peak flows and flow coefficients are increasing regularly. Floods are earlier - in August instead of September and more intense. This increase is also observed for other neighbouring Sahelian rivers. The maximum daily flows increase by almost 100%, but the number of days when the flow is higher than half the maximum flow varies little over the same period, reflecting a flood that is not very spread out over time. The work realized by Traore et al. [11] to assess the evolution of irrigated areas with Landsat images in Kou watershed highlighted that for several years, the pressure on the water resources of the Kou has increased, partly due to the extension of irrigated agricultural perimeters. He further demonstrated that over the past 10 years the irrigated area has increased by almost 70% in 20 years, with most of this expansion occurring.

The work carried out by Ouedraogo [12] in 2012 on the impact of climate change on agricultural income in Burkina Faso showed that agriculture is very sensitive to rainfall in Burkina. A 1% increase in rainfall leads to a 14.7% increase in agricultural income. However, a 1% increase in temperature leads to a 3.6% decrease in farm income. Sensitivity analyses showed that farmers will lose 93% of their income following a 5°C temperature increase. Thus, the Burkinabe government is attempting to alleviate the problem of water deficits by conducting a vast program of maintenance, rehabilitation and construction of surface water reservoirs. It is in this context that the construction of several dams is planned, including that of Sokouraba. Located in the province of Kéné Dougou, it is a hydro-agricultural dam that aims to increase agricultural and pastoral production capacities. The realization of this dam requires a hydrological study and a characterization of the catchment area of sokouraba is essential. Remote sensing tools and geographic information system are the most efficient means to determine the hydrological and morphometric characteristics of the watershed. The determination of the physiographic characteristics of a watershed is necessary to determine and analyze the hydrological behavior of a watershed (precipitated water wave, stream flow, balance [13]; [14]. The use of geographic information system on the study of watersheds allows nowadays to make the management of water balances of a rainfall receiving area and to evaluate its contribution to runoff to the redistribution of water in the soil and towards the water table and its consumption by vegetation ([15]. Thus, the present study focuses on the hydrological study and the characterization of the Sokouroba watershed in order to better understand the functioning of the hydrographic networks as well as the quantity of water likely to be used for the realization of a dam in this watershed. Sokouraba is a village in the Kangala Commune in the Hauts Bassins Region. This village had 4196 inhabitants. The economic activities of the population of this village, like the rural world in Burkina Faso, are based on agriculture and breeding which are strongly dependent on the availability of water resources.

Materials and Methods

Study Area

Sokouraba is a village in the Kangala Commune located in the Hauts Bassins Region. This village had 4196 inhabitants. This locality is accessible from Ouagadougou by taking the national road number one (Ouaga-Bobo) long of 360 Km, then the national road number 8 (Bobo-Orodara-Diéri-Mahon) long of 122Km, then the RD 69 road from Mahon to Kangala over a distance of 9 km and finally the track leading from Kangala to Sokouraba over a distance of about 15 km. It is also accessible from Diéri via the RR20 road for 25 km through Samogohiri. The travel distance from Ouagadougou is about 506 km, passing through Diéri. Moreover, Sokouraba is located at about 40 km from the Malian border. According to the phytogeographical division of Guiko [16], Sokouraba belongs to the Southern Sudanian domain and receives an average of 1000 mm of water per year. The climate of this locality is of Sudanian type. It is characterized by the alternation of two seasons: The dry season which is cool from November to February then hot from March to April. The dry season is characterized by the continental trade wind known as harmattan, a hot and dry continental wind coming from the Sahara anticyclone. However, low rainfall occurs annually during the second half of the dry season; the rainy season which begins in May and ends in October. It lasts on average 150 to 175 days with an average annual rainfall of 900 to 1200 mm. The wettest month is August, while December and January are the least rainy months. The average temperatures in the municipality vary between 24 and 30 °C with a relatively small temperature range of 5 °C. Air humidity in

the dry season is around 25%, while in the wet season it is around 85%. The average annual evaporation varies between 1500 and 1700 mm [17]. During the period 2004 to 2013, the annual rainfall in the commune varied between 982 and 1357 mm. The year 2006 was the wettest year (1357 mm) during this time interval, while the minimum was recorded in 2008.

Methods

In order to make the data usable, a set of tools was used in the framework of our work, among which we can mention the geographic information system (SIG) software ArcGis used for the characterization of the watershed and the edition of the various maps; Google Earth Pro used for the geolocalization of the outlet and HyfranPlus software used for the frequency analysis of the rainfall data. In addition, data essential to the study, notably climatic data such as rainfall and evaporation from the rainfall and synoptic stations of Orodara and Bobo Dioulasso respectively were also processed.

Data from the Orodara rainfall station was selected for the frequency analysis of rainfall due to its geographical position in the watershed. Maximum daily and annual rainfall series over a period from 1960 to 2019 were used as the basis for this frequency analysis. For the analysis of a rainfall data series, the minimum recommended size is a sample of at least thirty (30) years. With a sample size of fifty-nine (59) years, the condition for conducting this analysis is therefore met. For the purpose of dam sizing, two models, namely the Normal or GAUSS law and the double exponential law or GUMBEL law, are used to validate the results of the frequency analysis of rainfall. The objective of this frequency analysis is to determine the different rainfall quantiles that are essential for the rest of our study and that correspond to given return periods. The fit is checked by establishing that at least 95% of the points are within the confidence interval. In addition, this analysis was used to determine the climate regime associated with the study area. All of these analyses are performed using HyfranPlus software, which is a tool adapted to the analysis of rainfall data.

The Normal or GAUSS law for fitting annual mean rainfall is based on the following function (Equation 1) [18]:

$$F(x) = \frac{1}{\sqrt{2\pi}} e^{-\frac{x^2}{2}} \quad (1)$$

Where $F(x)$ is the distribution function and $x = \frac{x - \bar{x}}{\sigma}$ is the variable, \bar{x} is the reduced mean and σ represents the standard deviation.

The double exponential or GUMBEL law for the adjustment of maximum daily rainfall is based on Equation 2. Considering the highest rainfall "X" over a time interval of any calendar period of the year, the distribution follows a distribution function represented in Equation X above ([19]).

$$F(x) = e\left(-e\left[-\frac{(x-x_0)}{\alpha}\right]\right) \quad (2)$$

Where $F(x)$ represents the distribution function, x_0 represents the position parameter and α corresponds to the scale parameter.

The DTMs established from the digitized contour lines of the basin were used as a basis for the determination of the morphological characteristics of the watershed feeding the Sokouraba dam. Then the ArcGis software was used for data processing. The result of this treatment made it possible to characterize the Sokouraba watershed through its surface, its shape and its relief and to know thus the type of hydrographic network to which our basin belongs. The determination of the longitudinal slope of the basin was determined after having traced the longitudinal profile of the main watercourse and made the ratio between its variation in altitude and its length (Equation 3).

$$I_l = \frac{\Delta H}{L_c} \quad (3)$$

Where I_l represents the longitudinal slope (m/km), ΔH represents the elevation change (m) and L_c corresponds to the length of the main river.

The geological map of Burkina was used to identify the different soil types in the watershed. The ORSTOM experiments allowed to define the permeability indices of the watershed. Thus, after having identified the nature of the soil of the Sokouraba watershed, it was classified according to the classification of RODIER and AUVREY.

The specific gradient of the watershed was determined by multiplying the corrected overall slope index by the square root of the watershed area. The Gravelius Compactness Index (K_G), the equivalent rectangle length (L_{eq}), the overall slope index (I_g), the corrected overall slope index, the gradient (D), and the Density of Drainage (D_d) of the watershed were determined using the following relationships (Equation 4 to 8):

$$K_G = \frac{P}{2\sqrt{\pi S}} \quad 0,28 \frac{P}{\sqrt{S}} \quad (4)$$

Where K_G represents the compactness index, P is the watershed perimeter and S represents the watershed area.

$$L_{\text{eq}} = \frac{P + \sqrt{P^2 - 16S}}{4} \quad (5)$$

Where L_{eq} is the length of the equivalent rectangle expressed in km, P is the perimeter of the catchment area expressed in km and S is the area of the catchment area given in km^2 .

$$I_g = \frac{D}{L_{\text{eq}}} \quad (6)$$

Where I_g represents the global slope index expressed in m/km, D corresponds to the difference in altitude separating the altitudes having 5 % and 95 % of the basin area above them given in m and L_{eq} represents the length of the equivalent rectangle expressed in km.

$$I_{g_{\text{cor}}} = \frac{(n-1)I_g + I_t}{n} \quad (7)$$

Where $I_{g_{\text{cor}}}$ corresponds to the global index of corrected slope expressed in m/km, I_g represents the global index of slope expressed in m/km, I_t corresponds to the transverse slope given in m/km and n represents the coefficient according to the length of the equivalent rectangle.

$$D_d = \frac{\sum L_t}{S} \quad (8)$$

Where D_d represents the drainage density expressed in km^{-1} , $\sum L_t$ corresponds to the total length of the hydrographic network expressed in km and S represents the surface area of the watershed given in km^2 .

The decennial runoff coefficient can be determined by calculating the ratio of runoff volume to precipitation volume. Very difficult to estimate, its evaluation is based on relatively subjective criteria. Two methods were used for the determination of the coefficient Kr_{10} namely that of the ORSTOM and the CIEH. The hypsometric curve which is a curve that shows the distribution of the surface of the watershed according to the altitude was also carried out within the framework of the present work.

Determination of the design flood consists of estimating the flood flow for which the structure must be able to discharge without damage. The design of any structure on a Sahelian river, be it a bridge or a dam, should be carried out with a minimum of knowledge on flood flows ([20]). As the BV is not gauged (no flow measurement device installed), the empirical methods implemented for small BVs in West and Central Africa are those used for determining flood flows. The methods used are the deterministic ones of AUVREY and RODIER (ORSTOM), the linear regression of Puech and Chabi (CIEH) and the exponential gradient of Gresillon et al (GRADEX). Thus, the rainfall series of the Orodara station made it possible to determine the decadal daily rainfall P_{10} and the centennial daily rainfall P_{100} through statistical adjustment methods.

The peak coefficient is defined as the ratio of the maximum runoff to the average runoff. It is expressed by the following relation (Equation 9):

$$\alpha_{10} = \frac{Qr_{10}}{Qmr_{10}} \quad (\text{Equation 9})$$

Where α_{10} corresponds to the peak coefficient, Q_{r10} expresses the maximum runoff given in m^3/s and Q_{mr10} represents the average runoff expressed in m^3/s . Whatever the area of the watershed, the peak coefficient α_{10} is admitted to be close to 2.6.

The abatement coefficient corresponding to the reduction coefficient that allows to pass, for a given frequency, from a point rainfall to an average rainfall calculated on a certain surface, located in a rainfall homogeneous area was also determined within the framework of the present study. It is used to determine the ten-year average rainfall P_{m10} . It is obtained using the following relationship (Equations 10 and 11):

$$A = 1 - \left(\frac{162 - 0,042 * P_{an}}{1000} * \log \log S \right) \quad (\text{Equation 10})$$

$$P_{m10} = A * P_{10} \quad (\text{Equation 11})$$

Where A represents the abatement coefficient, P_{an} expresses the average annual rainfall (mm), S corresponds to the surface area of the watershed (km^2), P_{m10} : average ten-year rainfall (mm) and P_{10} represents the ten-year rainfall (mm).

The basic time Tb_{10} and the time of rise Tm_{10} of water at the outlet of the dam are deduced from the charts of the method of AUVREY and RODIER. The basic time is the time included between the beginning and the end of the fast runoff. In dry tropical zone, the base time is expressed by the following relation (Equation 12):

$$Tb_{10} = a * S^{0,36} + b \quad (\text{Equation 12})$$

Where Tb_{10} represents the basic time, a and b are parameters depending on the global slope index, the permeability and the climatic zone of the watershed.

The rise time corresponding to the time between the beginning of the runoff and the maximum of the flood was determined using the following formula (Equation 13):

$$Tm_{10} = \frac{1}{3} * Tb_{10} \quad (\text{Equation 13})$$

Where Tm_{10} is the rise time and Tb_{10} is the base time.

The determination of the ten-year flood was carried out using the ORSTOM and CIEH methods. The ORSTOM method is resolutely deterministic and was developed by Auvrey and Rodier. The proposed approach is that of a global rain-flow model based on the unit hydrograph theory [21]. For this model, the peak flow corresponding to the surface runoff of the decennial flood is defined by the following relation (Equation 15):

$$Qr_{10} = A * Kr_{10} * P_{10} * \alpha_{10} * \frac{S}{Tb_{10}} \quad (\text{Equation 14})$$

$$Q_{10} = m * Qr_{10} \quad (\text{Equation 15})$$

Or Qr_{10} represents the peak flow of the decennial surface runoff, Q_{10} represents the decennial flood flow, m corresponds to the coefficient of majorator taken equal to 1,05, A expresses the coefficient of abatement of VUILLAUME, Kr_{10} corresponds to the ten-year runoff coefficient, P_{10} corresponds to the ten-year maximum daily rainfall, α_{10} represents the peak coefficient taken equal to 2.6, S represents the surface area of the catchment area and Tb_{10} the base time of the ten-year flood.

The CIEH method was proposed by PUECH and CHABI-GONNI and was based on 162 watershed coming essentially from the collection of on the experimental basins. The expression of the peak flow of the decennial flood is based on a multiple regression scheme and is presented in the following form (Equation 16) [22]; [23].

$$Q_{10} = a * S^s * P_{an}^p * I_g^i * K_{r10}^k * D_d^d \dots \quad (\text{Equation 16})$$

Where a, s, p, i, k, d correspond to the coefficients to be determined, S represents the surface area of the catchment area, I_g represents the global slope index, P_{an} corresponds to the average annual rainfall, Kr_{10} represents the ten-year runoff coefficient and D_d corresponds to the drainage density. The list of parameters to be

included in the model is not exhaustive. This method is made of statistics with several variants depending on the belonging of the basin to a climatic division, a geographical position, a division for a country or a group.

The estimation of the peak flows of the flood of return period higher than 10 years was made according to the GRADEX theory. The principle on which this method is based consists in assuming that beyond a certain return period, any rain that falls will run off. The 10-year period, corresponding to the precipitation that generated the ten-year flood, is used as a threshold. Thus, any extreme precipitation beyond the 10-year period generates an additional flow equal to the additional rainfall compared to the 10-year period. The additional flow is translated by a multiplier coefficient C (Equation 17) higher than 1. This coefficient proposed in 1977 by and is based on the GRADEX method of GUILLOT and DUBAND after a critical study of the various proposed coefficients.

$$C = 1 + \frac{P_{100} - P_{10}}{P_{10}} * \frac{\left(\frac{T_{b10}}{24}\right)^{0,12}}{Kr_{10}} \tag{Equation 17}$$

Where C is the surcharge factor, P₁₀ is the maximum daily wet decadal precipitation, P₁₀₀ is the maximum daily wet centennial precipitation, T_{b10} is the base time and Kr₁₀ is the decadal runoff factor. This method makes it possible to pass from the decennial flow to the project flow thanks to a linear relation. Thus the project flow corresponding to the 100-year flood is given by the following equation (Equation 18):

$$Q_{100} = C * Q_{10} \tag{Equation 18}$$

Where Q₁₀₀ is the project discharge, C is the design factor and Q₁₀ is the 10-year flood discharge.

Results and Discussions

Rainfall data

The treatment of the annual mean and daily maximum rainfall data from the Orodara station by the GAUSS and GUMBEL laws respectively can be summarized in Table 1. With a sample size greater than 30 years representing the minimum duration defined for a frequency analysis, the samples are sufficiently representative for the validation of the meteorological analysis. Analysis of this table shows that for the period 1960 to 2019, annual precipitation values range from 347.3 to 1596.6 mm with an average of 1099.28 mm. The maximum daily rainfall values for the same period vary between 42 and 287 mm with an average of 82.85 mm.

The analysis carried out on the annual rainfall trends revealed that 91.50% of the rainfall is observed between May and October and that August, July and September are the rainiest months with 25.70%; 19.80% and 17.50% respectively (Figure 1).

Table 1: Rainfall characteristics of the Orodara station

Designation Result Unit	Designation Result Unit		Designation Result Unit
Station	Orodara		-
Sample	Annual rainfall	Maximum daily rainfall	-
Size	59	59	Number
Period	1960 - 2019	1960 - 2019	Year
Minimum value	347,3	42	mm
Maximum value	1 596,6	287	mm
Variance	46 773,76	1 286,69	mm
Average	1 099,28	82,85	mm
Standard deviation	216,27	35,87	mm

Median	1 099,28	76	mm
Coefficient of variation	19,67	43,29	-
Confidence interval	95	95	%

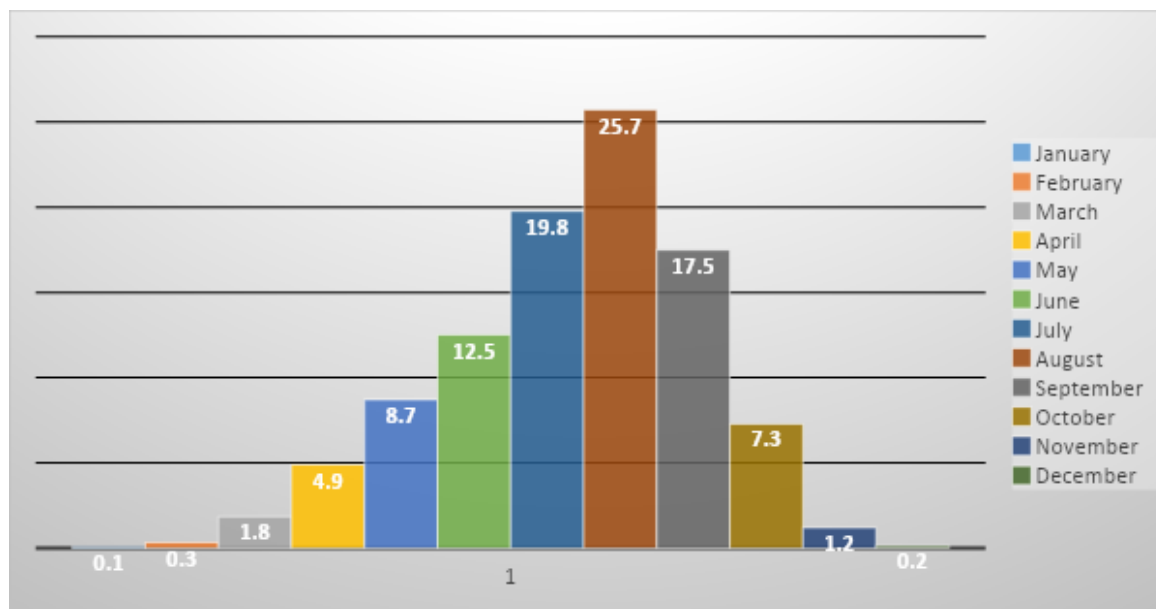


Figure 1: Histogram of annual rainfall for Orodara from 1960 to 2019

The results of the quantiles from the frequency analysis that will be used in the rest of our study are shown in Table 2. The Sokouraba watershed with its hydrographic network is represented in Figure 3. The average annual rainfall recorded is about 1100 mm/year. The values of wet decennial and wet quinquennial rainfall are respectively 1380 and 1280 mm. The dry five-year and dry ten-year rainfall values are 917 mm and 821 mm respectively (Table 2).

Table 2: Summary of rainfall in Orodara

Periodic rainfall	Value	Unit
Average annual rainfall (P_{an})	1100	(mm)
Wet ten-year rainfall	1380	(mm)
Wet five-year rainfall	1280	(mm)
Five-year dry rainfall	917	(mm)
Dry ten-year rainfall	821	(mm)
Maximum daily rainfall of wet decadal frequency (P_{10})	129	(mm)
Maximum daily rainfall of 100-year wet frequency (P_{100})	195	(mm)

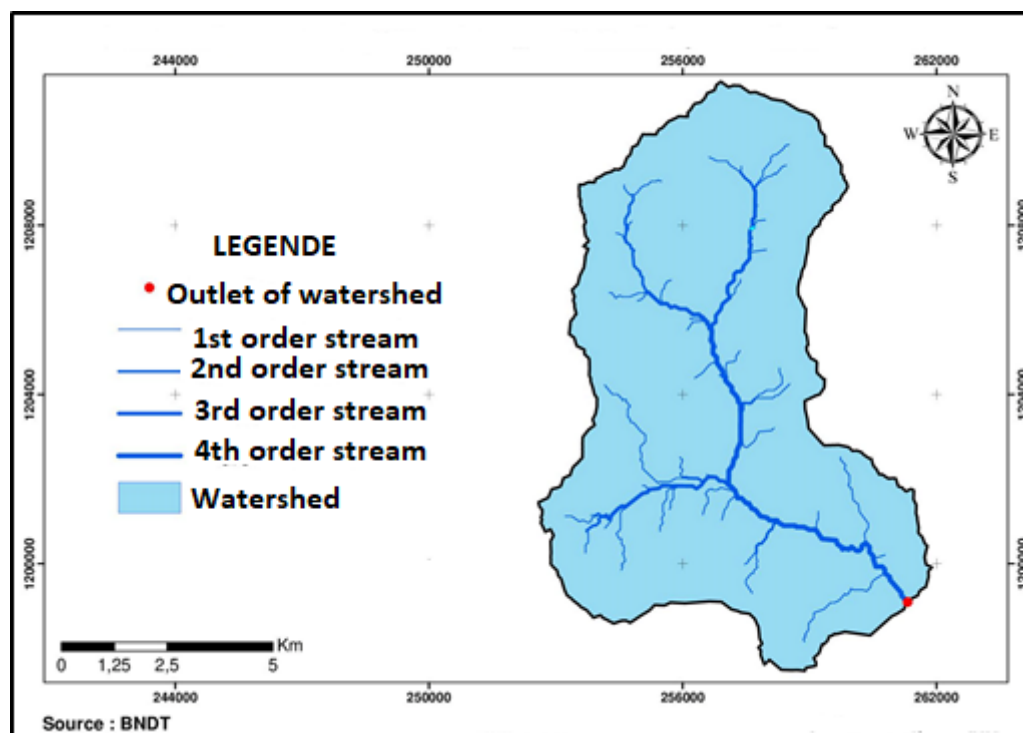


Figure 2: Sokouraba watershed and its hydrographic network

Morphometric characteristics of the watershed

Table 2 presents the values of the various morphometric parameters of the Sokouraba watershed determined within the framework of the present study. The delimitation of watershed gave a surface of 77,34 Km² and a perimeter of 44,3 Km. The values of the length and the width of the equivalent rectangle of the basin are respectively 17,81 Km and 4,34 Km. The value of the longitudinal slope was determined from the longitudinal profile of the main river represented in Figure 4. This slope is then deduced from the ratio of the difference in altitude that can be read on the same figure 2, i.e. 546 m for the highest point and 496 m for the lowest point, and the length of the main river estimated at 15.41 km. The longitudinal slope thus calculated is equal to 3.24 m/km. It is between 2 ‰ and 5 ‰. This value indicates that this watershed is ranked in the R2 class. In other words, this watershed corresponds to a low slope watershed consisting of plain. The cross slopes It are calculated in six (06) different cross profiles that are three (03) taken in left bank and the other three (03) in right bank. Then, an average is established by bank and thereafter we deduced the global average in order to obtain the value of index of transverse slope of all watershed of Sokouraba. The value thus calculated of the average cross slope index of Sokouraba is 14.75 m/km. This value is different from its longitudinal slope index by more than 20%. It is then necessary to proceed to a correction of the global slope index ([24]). The value of the corrected overall slope index of the watershed is 7.05 m/Km. The value of the Gravelius compactness index of the watershed calculated in this way is 1.42. This value of KG higher than 1 indicates that the watershed of sokouraba is of elongated shape. The drawing of the hypsometric curve (Figure 5) allowed us to determine the altitudes at 5% and 95% of the cumulative surface percentages, which are respectively 562 m and 505 m. These curves are a useful tool for comparing several basins together or the various sections of a single basin. In addition, they can be used to determine the average rainfall over a catchment area and provide information on the hydrological and hydraulic behaviour of the catchment and its drainage system. The value of the overall slope index calculated in this way is 3.20 m/Km. The value of the specific gradient of the watershed is 61.99. This value is included between 50 and 100 m, thus according to the classification of the reliefs according to the latter, the relief of the catchment area of Sokouraba can be qualified as moderate. The total length of the watercourses as well as the area are determined with the help of ArcGIS software. The values of the length of the main watercourse and the total length of the watercourses calculated are respectively 15,41Km and 63,25 Km. The calculated value of drainage density of the catchment area is 0.21 Km⁻¹. This value is determined by the knowledge of the total length of the watercourses of the basin and its surface.

Table 3: Characteristics of Sokouraba watershed

Designation	Symbol	Values	Unit
Watershed perimeter	P	44,3	km
Area of the BV	S	77,34	km ² .
Difference in elevation of main stream	ΔH	50	m
Length of main stream	L_c	15,41	km
Total length of watercourse	$\sum L_t$	63,25	km
Longitudinal slope	I_l	3,24	m/km
The Gravelius compactness index	K_G	1,41	-
Drainage density	D_d	0,82	km ⁻¹
Length of the equivalent rectangle	$L_{\acute{e}q}$	17,81	km
Width of the equivalent rectangle	$l_{\acute{e}q}$	4,34	km
Overall slope index	I_g	3,20	m/km
Cross slope	I_t	14,75	m/km
Corrected overall slope index	I_{gcor}	7,05	m/km
Specific gradient	D_s	62,00	m

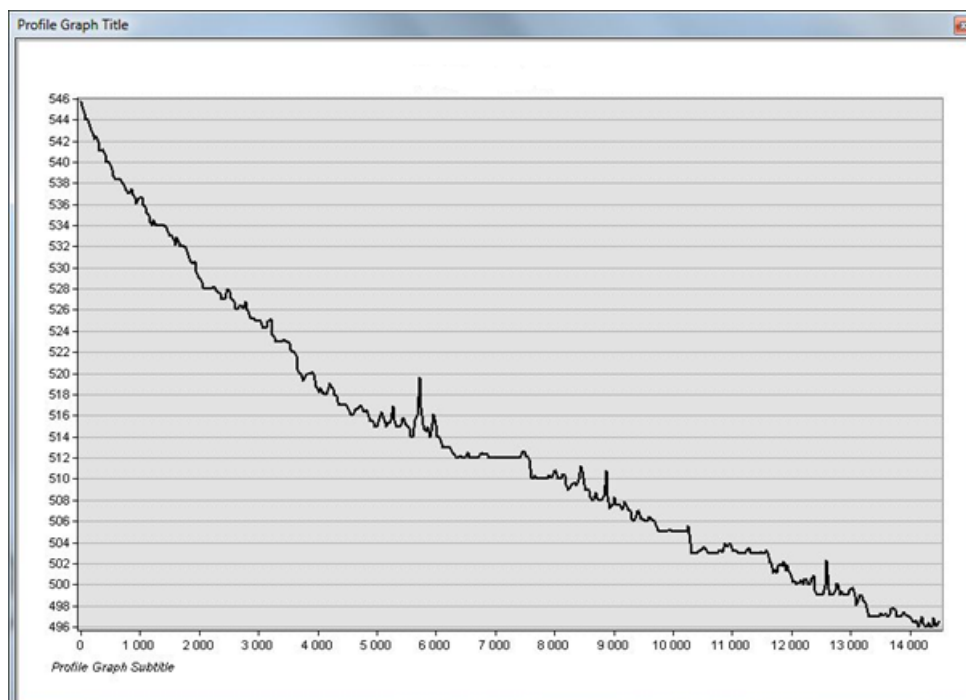


Figure 3: Longitudinal slope of the Sokouraba watershed

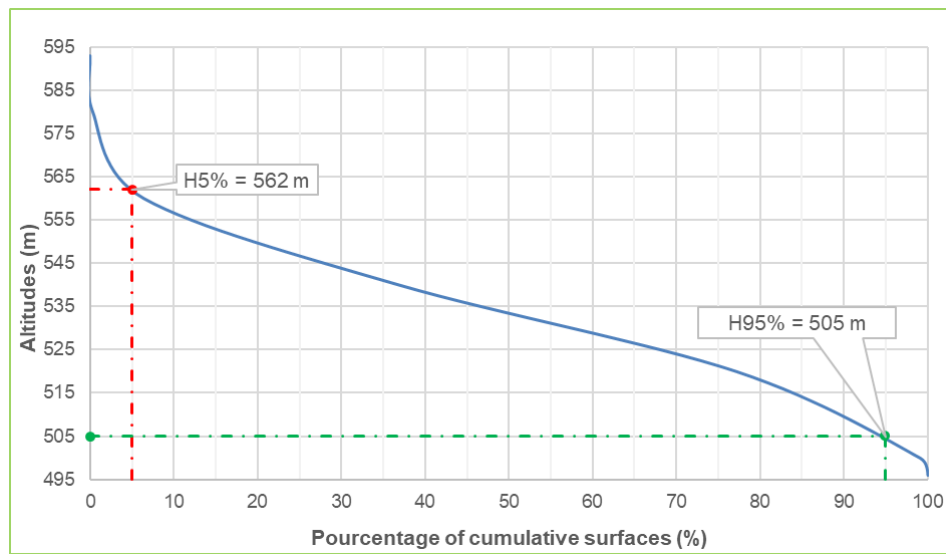


Figure 4: Hypsometric curve of Sokouraba watershed

The value of the attenuation coefficient and the ten-year rainfall calculated in this study are 0.78 and 100.062 mm respectively. This coefficient of abatement corresponds to the reduction coefficient which allows to pass, for a given frequency, from a height of punctual rain to an average height calculated on a certain surface, located in a homogeneous rainfall area. The values of the base time and rise time determined are 915.33 minutes and 305.11 minutes respectively. The value of the decadal runoff coefficient was determined using the CIEH method (Table 3). This method is a function of the climatic zone and substrate and uses regression results obtained on the basis of geological substrate and annual precipitation. The soil map of Sokouraba watershed shown in Figure 5, indicates that the geology of Sokouraba is heterogeneous and consists of 76.68% clay and 23.32% sandstone (58%). Can be used in our case, the relations K_4 for clays and K_2 for sandstones. Based on these relations, the value of K_{r10} determined by the CIEH method is 33.21% (Table 4).

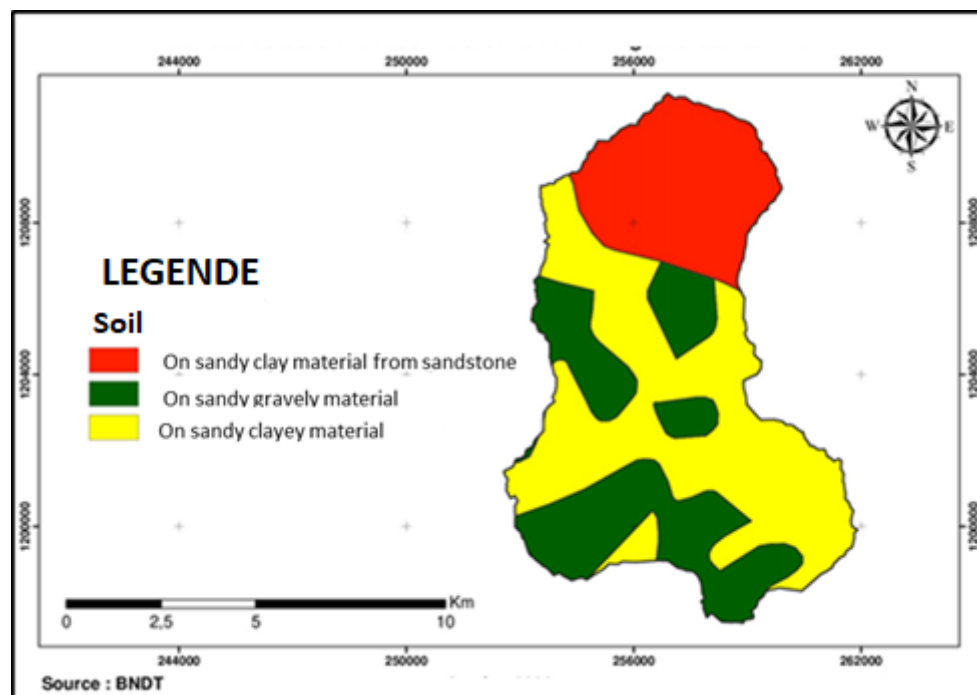


Figure 5: Soil map of Sokouraba watershed

Table 4: Method for determining the 10-year runoff coefficient value

Category	Formula
Granites	$K_1 = 2300P_{an}^{-0.67}$
Sandstone	$K_2 = 300P_{an}^{-0.375}$
Sands	$K_3 = 2, 10^7 P_{an}^{-2.2}$
Clay + marl	$K_4 = 300P_{an}^{-0.3}$
Shale	$K_5 = 370P_{an}^{-0.375}$
$K_{r10} = \sum_{i=1}^n a_i K_i$	$n = 1...5$ $a_i = \% \text{ de sol de type } i$

Tableau 5: 10-year runoff coefficient calculations from CIEH

Material	Area (km ²)	Percentage of soil (%)	K _i	K _{r10} (%)
Clay	35,94	76,68	36,70	28,14
Clay	5,13			
Clay	3,17			
Clay	1,46			
Clay	13,61			
Sandstone	18,04	23,32	21,71	5,07
Total	77,34	100	-	33,21

The value of the 10-year runoff coefficient was determined again using the ORSTOM method. On the basis of the general form analytical equations presented in Table 6, the runoff coefficients Kr were determined for P₁₀ = 70 mm and P₁₀ = 100 mm (Table 6). In dry tropical regime, for watershed whose surface is higher than 10 km² with a class of permeability P3 or RI and with a global corrected slope index of 7,05 included between 7 and 10, the parameters a, b and c of kr₇₀ and kr₁₀₀ necessary to the determination of the runoff coefficient Kr₁₀ by the ORSTOM method are presented in tables x and x. For a ten-year rainfall P₁₀ = 129 mm higher than 100 mm the value of Kr₁₀ is obtained by extrapolation between the values of Kr for P₁₀ = 70 mm and P₁₀ = 100 mm. The value of the decennial runoff coefficient thus calculated is 27.83% (Table 7).

Table 6: Calculation of runoff coefficient Kr for P₁₀ = 70 mm and P₁₀ = 100 mm

	Kr ₇₀ : runoff coefficient for a 10-year rainfall equal to 70 mm
--	---

$Kr_{70} \text{ ou } Kr_{100} = \frac{a}{S+b} + c$	<p>Kr₁₀₀ : runoff coefficient for a 10-year rainfall equal to 100 mm</p> <p>S : Watershed area (km²)</p> <p>a, b and c: parameters depending on the slope index and infiltrability</p>
--	--

Table 7: Calculation of 10-year runoff coefficient equal to 70 mm and 100 mm

<i>10-year runoff coefficient equal to 70 mm</i>					
I_{g_{cor}}	S (km²)	a	b	c	Kr₇₀ (%)
7	77,34	200	20	18,5	20,55
7,05		200,32	20	18,52	20,58
15		250	20	21,7	24,27
<i>10-year runoff coefficient equal to 100 mm</i>					
I_{g_{cor}}	S (km²)	a	b	c	Kr₁₀₀ (%)
7	77,34	240	30	22	24,24
7,05		240,54	30	22,03	24,27
15		325	30	26	29,03

The value of the decennial flow was determined initially by using the CIEH method (Table 8). For the case of Burkina Faso eight (08) regression equations presented in table 8 which will allow to approach the decennial flood according to the most representative parameters which are the surface of the basin S, the average annual rainfall P_{an}, the global index of corrected slope I_{g_{cor}}, the decennial runoff coefficient Kr₁₀ and the drainage density D_d are generally used (Table 8) [25]. The expression N° 3 of the table 8 judged much more representative of the parameters of the catchment area of Sokouraba was used for the estimation of this decennial flow. The value thus calculated of this decennial flow is 70,41 m³ /s.

The ten-year peak flow rate Q10 is deduced by multiplying the peak flow rate corresponding to surface runoff by the surcharge coefficient m. This coefficient, which is a function of the class of infiltrability of the basin and its climatic zone, is taken equal to 1.05 within the framework of the present study. The peak flow corresponding to the surface runoff of the decennial flood is defined by the parameters presented in table 9. The value of this peak flow calculated in this way is 122.54 m³ /s and that of the decennial peak flow Q10 deduced is estimated at 128.67 m³ /s. The value of the project flow corresponding to the 100-year flow determined in this study was estimated at 173.16 m³ /s.

Table 8: Ten-year flow calculations according to CIEH

Number	Expression	Ten-year flow rate	Unit
1	$2,01 * 77,34^{0,649} * 7,05^{0,066} * 0,82^{0,824}$	32,57	m ³ /s
2	$0,41 * 77,34^{0,425} * 33,21^{0,923}$	65,98	m ³ /s
3	$0,254 * 77,34^{0,462} * 7,05^{0,101} * 33,21^{0,976}$	70,41	m ³ /s

4	$0,407 * 77,34^{0,532} * 33,21^{0,941}$	111,09	m ³ /s
5	$0,0912 * 77,34^{0,643} * 7,05^{0,399} * 33,21^{1,019}$	115,56	m ³ /s
6	$35600 * 77,34^{0,342} * 1100^{-1,808}$	37,59	m ³ /s
7	$203 * 77,34^{0,459} * 1100^{-1,301} * 33,21^{0,813}$	63,76	m ³ /s
8	$22400 * 77,34^{0,363} * 1100^{-1,748} * 7,05^{0,059}$	38,35	m ³ /s

Table 9: Calculation of the peak flow corresponding to the surface runoff of the 10-year flood and the peak flow

Parameter s	A	Kr ₁₀ (%)	P ₁₀ (mm)	α ₁₀	S (km ²)	Tb ₁₀ (hours)
Values	0,7 8	33,2 1	12 9	2,6 0	77,3 4	15,2 6
$Qr_{10} = 0,78 * 0,3321 * 129 * 10^{-3} * 2,60 * \frac{77,34 * 10^6}{15,26 * 3600}$ $Qr_{10} = 122,54 \text{ m}^3/\text{s}$						
$Q_{10} = m * Qr_{10}$ $Q_{10} = 1,05 * 122,54$ $Q_{10} = 128,67 \text{ m}^3/\text{s}$						

Conclusion

This study focuses on the hydrological study and the characterization of the Sokouroba watershed. The hydrologic analysis highlighted that the period 1960 to 2019, annual precipitation values range from 347.3 to 1596.6 mm with an average of 1099.28 mm. The maximum daily rainfall values for the same period vary between 42 and 287 mm with an average of 82.85 mm. The analysis carried out on the annual rainfall trends revealed that 91.50% of the rainfall is observed between May and October and that August, July and September are the rainiest months with 25.70%; 19.80% and 17.50% respectively. The average annual rainfall recorded is about 1100 mm/year. The values of wet decennial and wet quinquennial rainfall are respectively 1380 and 1280 mm. The dry five-year and dry ten-year rainfall values are 917 mm and 821 mm respectively. The delimitation of watershed gave a surface of 77,34 Km² and a perimeter of 44,3 Km. The values of the length and the width of the equivalent rectangle of the basin are respectively 17,81 Km and 4,34 Km. The longitudinal slope thus calculated is equal to 3.24 m/km. It is between 2 ‰ and 5 ‰. This value indicates that this watershed is ranked in the R2 class. In other words, this watershed corresponds to a low slope watershed consisting of plain. The value of the corrected overall slope index of the watershed is 7.05 m/Km. The value of the Gravelius compactness index of the watershed calculated in this way is 1.42. This value of K_G higher than 1 indicates that the watershed of sokouraba is of elongated shape. The value of the overall slope index calculated in this way is 3.20 m/Km. The value of the specific gradient of the watershed is 61.99. This value is included between 50 and 100 m, thus according to the classification of the reliefs according to the latter, the relief of the catchment area of Sokouraba can be qualified as moderate. The values of the length of the main watercourse and the total length of the

watercourses calculated are respectively 15,41Km and 63,25 Km. The calculated value of drainage density of the catchment area is 0.21 Km^{-1} . The value of the attenuation coefficient and the ten-year rainfall calculated in this study are 0.78 and 100.062 mm respectively. The value of the decennial runoff coefficient thus calculated is 27.83%. The value of peak flow is $122.54 \text{ m}^3 / \text{s}$ and that of the decennial peak flow Q10 deduced is estimated at $128.67 \text{ m}^3 / \text{s}$. The value of the project flow corresponding to the 100-year flow determined in this study was estimated at $173.16 \text{ m}^3 / \text{s}$.

References

- [1] FAO (Food and Agriculture Organization of the United Nations). "Irrigation water requirements and withdrawals by country". FAO Aquastat report. 1996; 266p.
- [2] Chuzeville B. "Tropical and Applied Hydrology in Sub-Saharan Africa". Water management collection, Ministry of Cooperation and Development (France). 1990; 275 p.
- [3] Ibrahim B. Characterization of the rainy seasons in Burkina Faso in a context of climate change and assessment of hydrological impacts on the Nakanbé basin. Doctoral dissertation. Pierre and Marie Curie-Paris VI University. 2012
- [4] Coulibaly YN, Bayala J, Gaiser T, Zombre G. Assessing tree effect on total soil carbon in agroforestry parklands systems along a rainfall gradient in Burkina Faso (West Africa). *International Journal of Biological and Chemical Sciences*. 2020 ; 14(9) : 3030-3046.
- [5] INSD (National Institute of Statistics and Demography). "Statistical compendium of the Hauts-Bassins region". Ouagadougou, Burkina Faso. 2006; 124 p.
- [6] INSD (National Institute of Statistics and Demography). "File of Hauts-Bassins localities. Main results by provinces and municipalities". Ouagadougou, Burkina Faso. 2007; 75 p.
- [7] INSD (National Institute of Statistics and Demography). "RGPH 2020 final report". Ouagadougou, Burkina Faso. 2008; 52p.
- [8] Albergel J, Carbonnel JP, Grouzis M. Climate deterioration in Burkina Faso. *Notebooks ORSTOM Sér Hydrol*.1985; 21(1): 3-20.
- [9] Savadogo M, Somda J, Seynou O, Zabré S, Nianogo AJ. *Catalog of good practices for adaptation to climate risks in Burkina Faso*. Ouagadougou, Burkina Faso: IUCN Burkina Faso. 2011.
- [10] Mahe G, Diello P, Paturel JE, Barbier B, Karambiri, Dezetter A, Rouche. *Decrease in rainfall and increase in runoff in the Sahel: climatic and anthropogenic impact on runoff from the Nakambe in Burkina Faso*. *Drought*. 2010;21(4):330-332.
- [11] Traore F, Cornet Y, Denis A, Wellens J, Tychon B. *Monitoring the evolution of irrigated areas with Landsat images using backward and forward change detection analysis in the Kou watershed, Burkina Faso*. *Geocarto International*. 2013; 28(8): 733-752.
- [12] Ouedraogo M. *Impact of climate change on agricultural income in Burkina Faso*. *Journal of Agriculture and Environment for International Development (JAEID)*, 2012; 106(1): 3-21.
- [13] HAMED KB, BOUANANI A. *Characterization of a watershed by the statistical analysis of morphometric parameters: Case of the watershed of Tafna (Northwest Algeria)*. *Geo-Eco-Tro*. 2016; 40(4): 277-286.

- [14] Bauling H. *Morphometry. Ann. geogr. Paris. 1959; 365: 385-408.*
- [15] Guillet F. *Hydrogeological study and modeling of a watershed in the Sahelo-Sudanian zone in Burkina Faso (use of the "SOURCE" model). Doctoral dissertation, Pierre and Marie Curie University. 1991.*
- [16] Guinko S. *Vegetation of the Upper Volta. Unpublished PhD thesis. Doctor of Natural Science. University of Bordeaux, Bordeaux, France. 1984.*
- [17] Albergel J, Carbonnel JP, Grouzis M. *Climatic deterioration in Burkina Faso. ORSTOM Notebooks, Ser. Hydrol, 1985; 21(1): 3-20.*
- [18] SEINGUE RG, BAOHOUTOU L. *Demonstration of rainfall variability on the Mayo-Kebbi plain, south-west Chad. Rev. Ivory. Science. Technology. 2015 ; 25:93-109.)*
- [19] Zahar Y, Laborde JP. *Statistical modeling and cartographic synthesis of extreme daily rainfall in Tunisia. Revue des sciences de l'eau/Journal of Water Science. 2007; 20(4): 409-424.*
- [20] Rodier JA. *Flood characteristics of representative small watersheds in the Sahel. Cah. ORSTOM ser Hydrol. 1986; 21(2): 3-26.*
- [21] FAO (Food and Agriculture Organization of the United Nations). "Floods and inflows. Manual for estimating decadal floods and annual inflows for small ungauged watersheds of Sahelian and dry tropical Africa". CIEH, ORSTOM, CEMAGREF, FAO Irrigation and Drainage Bulletin. 1996; 54: 245p.
- [22] Harr RD, McCorison FM. *Initial effects of clearcut logging on size and timing of peak flows in a small watershed in western Oregon. Water Resources Research. 1979; 15(1): 90-94.*
- [23] Masiandima MC, van de Giesen N, Diatta S, Windmeijer PN, Steenhuis TS. *The hydrology of inland valleys in the sub-humid zone of West Africa: rainfall-runoff processes in the M'bé experimental watershed. Hydrological Processes. 2003; 17(6): 1213-1225.*
- [24] Berton S. *Flood control in lowlands. Small and micro-dams in West Africa. Case. 1988; (12): 354 – 355.*
- [25] Triboulet JP, Gonni DC, Nouvelot JF, Lamachere JM, Puech C, Faures JM. (1996). *Floods and inflows. Manual for estimating decadal floods and annual inflows for small ungauged watersheds in Sahelian and dry tropical Africa. 1996.*