

## Original Research Article

# **Two-dimensional Echocardiography in the Evaluation of Right Ventricular Systolic Function in Patients with Atrial Septal Defect**

### **Abstract**

**Background:** Atrial septal defects lead to left to right shunt, the volume of the shunt is determined by RV/LV compliance, defect size, and LA/RA pressure. RV volume overload and pulmonary over circulation are caused by a simple ASD because the RV is more compliant than the LV. The aim of our study was to assess changes in RV systolic function before and after ASD closure either by surgery or transcatheter closure.

**Methods:** This study was conducted on 70 patients diagnosed with ASD Secundum and had subdivided into two groups A (surgical closure) group, and B (percutaneous device closure) group. All patients had been assessed by transthoracic Echocardiography examination for RV systolic Function 24 h before ASD closure, and 6 months after closure.

**Results:** There was a significant decrease in the right ventricle systolic function indices (TAPSE, FAC, Tissue Doppler S wave velocity, and global longitudinal free wall strain) after ASD closure either by surgery or by transcatheter device closure

**Conclusions:** The right ventricle's size and function are affected by a large shunt caused by an ASD secundum. ASD and its consequent volume overload resulted in higher RV myocardial contraction, leading to an increase in strain values and RV systolic function indices, which were reduced and returned to normal values when the left-to-right shunt was eliminated, and the defect was closed.

**Keywords:** Two-dimensional Echocardiography, Right Ventricular Systolic Function, Atrial Septal Defect, TAPSE, FAC.

## **Background:**

About 6–10% of all congenital heart defects are ASDs (atrial septal defects). 30–40% of clinically significant adult intracardiac shunts are caused by this condition. [2] It is a connection between atrial chambers that allows blood to be shunted between the systemic and pulmonary circulations. [3] The most frequent type of ASD is an ostium secundum ASD, which is caused by a true loss of septum primum tissue. [4]

Hemodynamic adaptation occurs in ASD patients as a result of compensatory hyperdynamic RV contraction [5], pulmonary vasodilation[6] and an increase in preload reserve and pulmonary vascular reserve. The baseline indices of RV contraction in patients with ASD would be substantially greater due to the compensatory hyperdynamic RV myocardium. This was explained by the fact that increased volume overload causes an increase in the initial length of cardiac fibers, which in turn causes contraction force to increase following Starling's rule, as previously stated. The increased preload imposed on the RV causes patients with open ASD to have a high baseline RV systolic function as a result of this.

Because the pulmonary vascular bed is a low-resistance system, a significant amount of blood flow can be tolerated without an appreciable increase in PA pressure[6] the PVR may be reduced even further when exercising. Because of the large RV/pulmonary preload reserve, many patients with ASD do not have any symptoms until their third or fourth decade. [6, 7]

The reduction in volume strain on the right heart occurs as a result of the ASD closure. There has been a reduction in both PAP and the size of the right heart cavity as a result of this procedure. [8, 9]

The aim of our study was to assess changes in RV systolic function before and after ASD closure either by surgery or transcatheter closure.

### **Methods:**

The study was performed in Echocardiography Lab in the Cardiovascular medicine department, Tanta University Hospital. After examination by 2-D Echocardiography, we included 70 patients who were candidates for ASD closure, and we had subdivided our patients into two groups according to the suitability of ASD device closure. 35 patients were not candidates for device closure and were referred for surgical ASD closure and were included in group A. 35 patients were suitable for device ASD closure and were included in group B. All the patients were assessed for RV systolic function 12-24 H before and 6 months after ASD closure, by 2D echocardiography examination and measuring TAPSE, FAC, tissue Doppler assessment of S wave velocity, and by 2D speckle tracking assessment of RV GLS. The study was done after being approved from the institutional ethical committee, Tanta University. Informed written consent was obtained from all patients included.

**Inclusion criteria** were patients diagnosed with isolated Secundum ASD by 2D Echocardiography and who were suitable for ASD device closure were included in group B. Other patients diagnosed with ASD secundum, and were not candidates for device closure, were referred for surgery and included in group A. Patients had Significant left to right shunt with Qp: Qs ratio of more than or equal to 1.5:1. Presence of signs of right ventricular volume overload as dilated RV, RA. Symptoms due to significant shunt.

**Exclusion criteria** were patients with associated other congenital cardiac anomalies. Patients with other types of ASD rather than Secundum defects. Patients with other causes of right ventricular dysfunction.

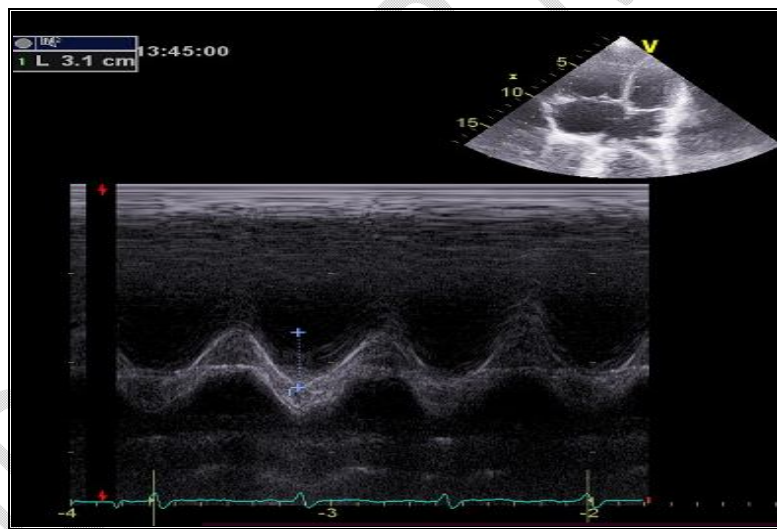
All patients were given a history that included their age, sex, body surface area, and symptoms that indicated a significant ASD. A complete general and local cardiac examination is performed. Surface electrocardiography with 12 leads (ECG). Complete blood count, international normalized ratio, clotting time, bleeding time, renal function tests, C-reactive protein, and virology are all routine laboratory investigations.

ASD closure: Surgical ASD closure was recommended for ASDs with inadequate or missing superior and posterior rims together, or the Inferioposterior (IVC) rim alone. The procedure was done under general or local anesthesia with echocardiographic and fluoroscopic guidance for ASDs that were eligible for transcatheter closure. Transesophageal echocardiography was employed in some cases, mainly in adults, to document the defect's complete occlusion. A 5 F or 6 F sheath was used to get vascular access to the right femoral vein, and if necessary, the right femoral artery. Amplatzer devices were used to close the defects. All patients received short-term antibiotics and antiplatelet (for 6 months) after the procedure.

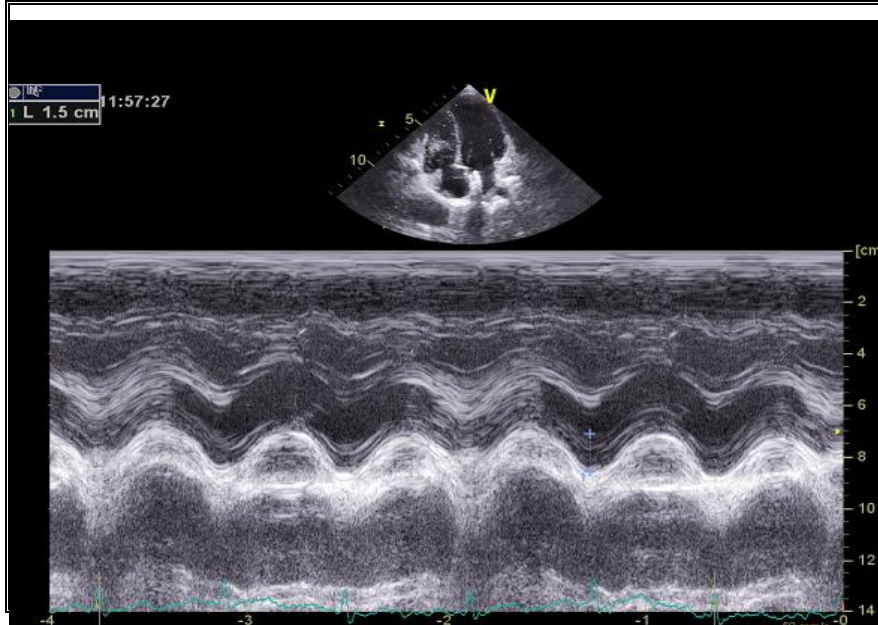
**Full two-dimension transthoracic echocardiography (2D TTE):** All patients underwent TTE (Vivid E9, General Electric Corporation) 12-24 h before as well as 6 months after successful closure. All data was collected offline by only one observer and averaged over 5 cardiac cycles. Measurement was done according to the recommendation of the American Society of Echocardiography.[10] for the evaluation of the following: **Visualization and examination of ASD and its hemodynamic consequences** by obtaining subxiphoid windows (frontal long axis and sagittal short axis), the apical 4-chamber view was used for evaluation of the hemodynamic

consequences of ASD and signs of right ventricle volume overload, to ensure that the patients were indicated for ASD closure, by Measurements of **RVED** basal diameter measurements and **RVEDD\LVEDD** ratio as an indicator of cardiac geometry). [10, 11] Also, an apical 4-chamber view was used for the evaluation of estimated systolic pulmonary artery pressure (ESPAP) obtained with the TR jet approach. PAH is classified According to Baseline RP: Normal PASP is less than 40 mmHg mild (40-49) mmHg, moderate (50-59 mmHg), and severe if equals or more than 60 mmHg. [12]

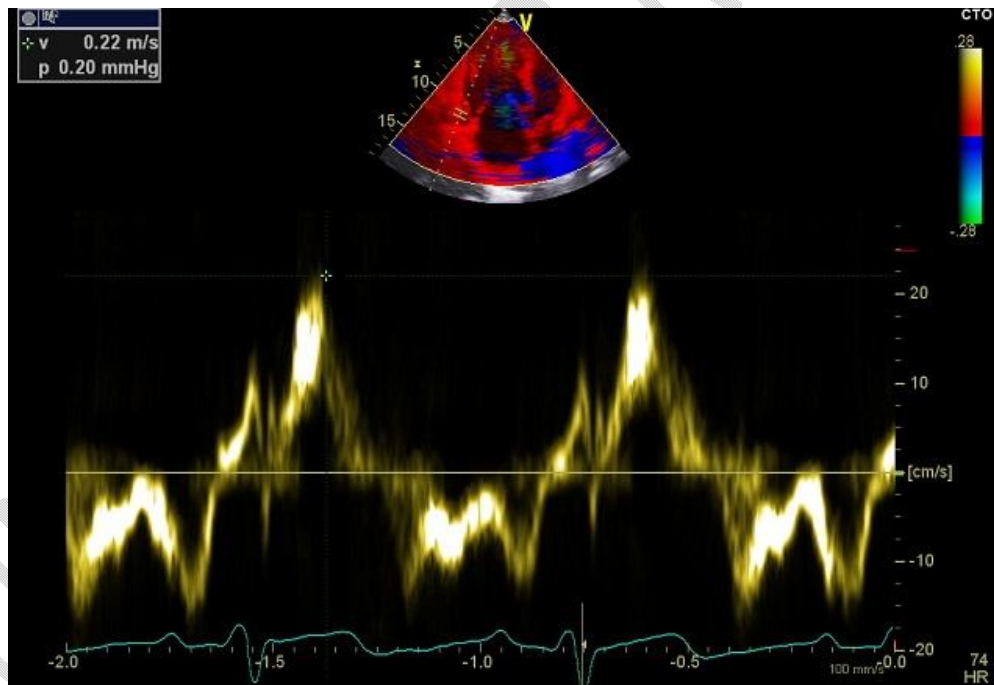
**Right ventricular systolic function** was assessed using RV focused 4-chamber view [12] by assessment of fractional area change (FAC), tricuspid plane annulus systolic excursion (TAPSE) figures (1,2), and systolic velocity of tricuspid annulus (S/wave). Figures (3,4)



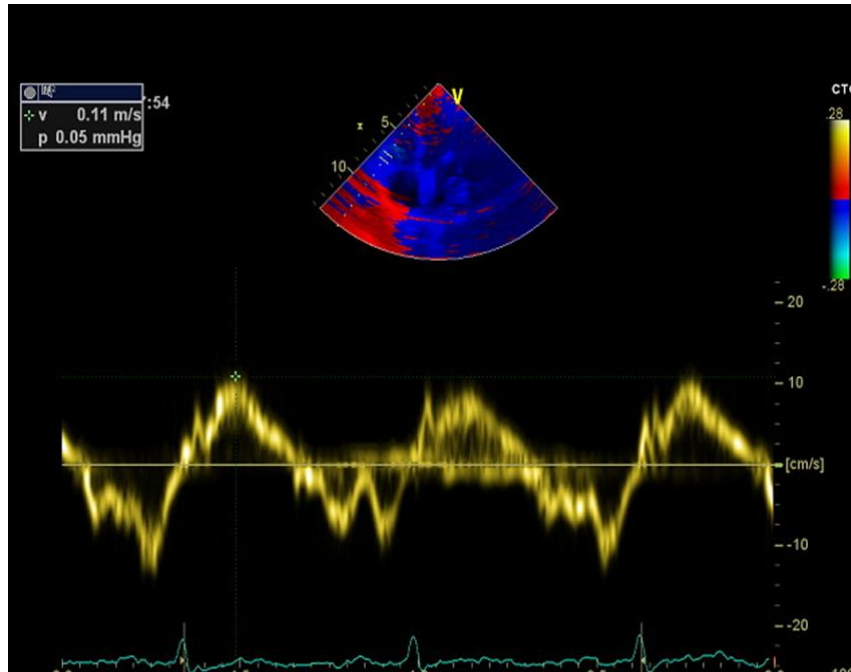
**Figure 1: Apical 4 chamber view demonstrating assessment of TAPSE before ASD closure, showing TAPSE of 31MM.**



**Figure 2: Showing a decrease in TAPSE results of 1.5 cm after device closure in the same patient.**

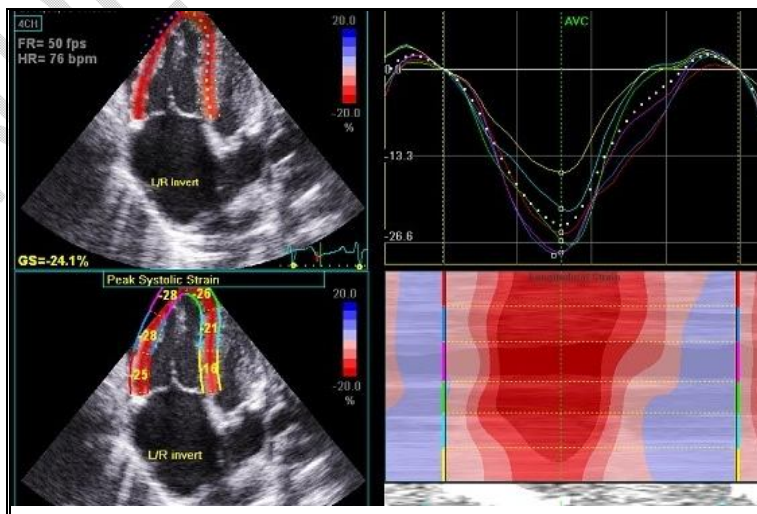


**Figure 3: Tissue Doppler S' wave Velocity measurement before ASD device closure showing S' wave velocity of 22CM |S.**

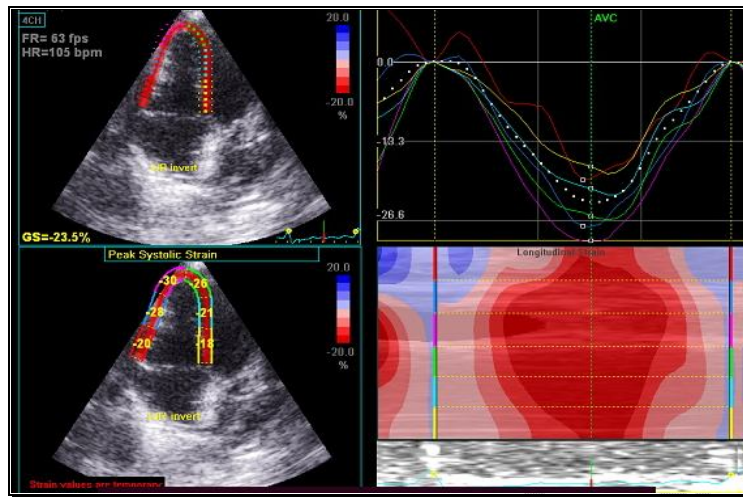


**Figure 4: Tissue Doppler S' wave Velocity decrease after ASD device closure in the same patient showing S' wave velocity of 11 CM \S.**

**Assessment of global longitudinal strain (GLS) by 2D speckle tracking imaging. [10, 13]** by manually tracing endocardial borders at the end of systole, and then automatically tracking the endocardial borders throughout each cardiac cycle to evaluate regional and global RV systolic function. Figures (5,6)



**Figure 5: Showing GLS measurement of 24.1%, and lateral (free) wall strain of 27% before ASD device closure.**



**Figure 6: Showing decreases in GS (23.5%), and lateral (free) wall strain (26%) after ASD device closure in the same patient.**

The RV myocardium was subsequently separated into six segments: the basal RV lateral wall, the mid-RV lateral wall, the apical RV lateral wall, the apical septum, the mid septum, and the basal septum).

A global longitudinal strain (GLS) value and a segment-specific peak systolic strain value PSS) were displayed after the reading analyst's approval.

The systolic strain of the six RV myocardial segments was measured. By averaging local strains (PSS) over the entire right ventricle using machine software, we were able to quantify the global longitudinal RV strain.

An average of the peak segmental strain values (PSS) of the RV free wall, supplied by the software is used to calculate RV free wall longitudinal strain

The results were analyzed, using dedicated software (Echo PAC BT09, GE Ultrasound) [10, 13]

### **Statistical analysis**

IBM SPSS software package version 20.0 was used to analyze the data. (IBM Corp., Armonk, New York) Numbers and percentages were used to describe qualitative data. Kolmogorov-Smirnov tests were employed to determine whether or not the distributions were normally distributed. Minimum and maximum values, medians, and interquartile intervals were used to characterize quantitative data (IQR). The significance of the findings was evaluated at a 5% level of significance.

## Results:

Regarding group A patients' age ranged from (6.60 – to 45.0) years, and the mean age was  $15.21 \pm 12.53$  years. Group B patients' ages ranged from (6.0 – to 38.0) with a mean age of  $53 \pm 7.51$ . So, there was no statistically significant difference between both groups regarding age. Regarding sex distribution There were 21 females (60%),14 males (40%) were enrolled in group A, and 28 females (80%), 7 males (20%) were enrolled in group B. The mean size of ASD was  $24.73 \pm 3.77$  mm in group A, and  $15.53 \pm 1.42$  mm in group B. There was a significant difference of  $p < 0.001$  between both groups regarding ASD size. Table (1)

**Table 1: Comparison between both groups regarding ASD size**

ASD size (mm)	Group A	Group B	Test of sig	p
Min-max	15.36-30.25	12.90-17.96		
Mean $\pm$ SD.	$24.73 \pm 3.77$	$15.53 \pm 1.42$	t=	<0.001*
Median (IQR)	25.68 (22.18 – 27.05)	15.69 (14.61 – 16.69)	13.508*	

IQR: Interquartile range, SD: Standard deviation, t: Student t-test, ASD: Atrial septal defect, p: p-value for comparing the studied groups, \*: Statistically significant at  $p \leq 0.05$

There was a significant decrease in RVEDD at 6 months after both surgical and transcatheter device closure, when comparing pre and post-closure results with a p-value of  $<0.001^*$  in both groups. as well as the RVEDD\LVEDD ratio showed a significant decrease at 6 months after both surgical and device closure when comparing pre and post-closure results with a p-value of  $<0.001^*$  in both groups. PASP showed a significant reduction after both surgical and

transcatheter device closure when comparing pre and post-closure results with a p-value of  $<0.001^*$  in both groups. Table (2)

**Table 2: Comparison between pre and post-closure results in both groups regarding Right Ventricle geometry and Pulmonary Artery Systolic Pressure**

RVEDD in (MM)	Group A				Group B			
	Pre	Post	Test of sig	P value	Pre	Post	Test of sig	P value
Min. – Max.	40.0 – 45.90	29.90 – 35.20	t=59.506*	<0.001*	33.60 – 45.50	22.90 – 32.0	t=35.306*	<0.001*
Mean ± SD.	43.13 ± 1.63	32.39 ± 1.60			39.03 ± 2.34	28.15 ± 2.31		
Median (IQR)	43.60 (42.0 – 44.25)	32.0 (30.90 – 34.0)			39.60 (37.60 – 40.40)	28.60 (26.70 – 29.45)		
<b>RVED/LVED ratio</b>								
Min. – Max.	1.07 – 1.25	0.70 – 0.99	t=20.387*	<0.001*	0.80 – 1.20	0.60 – 1.03	t=15.262*	<0.001*
Mean ± SD.	1.17 ± 0.05	0.87 ± 0.08			1.03 ± 0.10	0.73 ± 0.10		
Median (IQR)	1.19 (1.13 – 1.20)	0.90 (0.80 – 0.92)			1.08 (0.95 – 1.09)	0.70 (0.70 – 0.80)		
<b>PASP mmhg</b>								
Min. – Max.	25.0 – 57.0	17.0 – 39.0	t=29.276*	<0.001*	22.0 – 41.0	15.0 – 32.0	t=47.469*	<0.001*
Mean ± SD.	37.11 ± 8.69	26.11 ± 7.15			28.31±5.12	18.63±4.66		
Median (IQR)	36.0 (30.0 – 40.50)	26.0 (19.0 – 30.0)			28.0 (24.0 – 30.0)	18.0 (15.0 – 20.0)		

IQR: Interquartile range, SD: Standard deviation, t: Paired t-test, p: p-value for comparing the studied groups: Statistically significant at  $p \leq 0.05$

Both surgical and transcatheter closure groups had shown a significant decrease (P value $<0.001^*$ ) in TAPSE, FAC, and Tissue Doppler S wave velocity after 6 months of closure. Table (3)

**Table 3: RV function indices results in pre and post-closure in both groups**

Systolic function indices	Group A				Group B			
	Pre	Post	Test of sig	P-value	Pre	Post	Test of sig	P-value
<b>TAPSE (mm)</b>								
Min. –	21.10 –	16.30 –	t=28.539*	<0.001*	21.10 –	16.30 –	t=23.859*	<0.001

Max.	35.50	29.20			30.50	24.20		
Mean ± SD.	29.75 ± 3.98	23.64 ± 4.03			26.09 ± 2.88	20.40 ± 2.20		
Median (IQR)	30.0 (27.27 – 33.30)	24.60 (20.10 – 27.55)			26.80 (24.35- 28.17)	20.10 (18.60- 22.15)		
Fractional area change (%)								
Min. – Max.	51.0 – 69.0	41.0 – 59.0			50.0 -68.0	40.0-57.0		
Mean ± SD.	57.80 ± 5.06	47.63 ± 5.20	t=23.931*	<0.001*	56.40±4.24	46.31±4.28	t=72.955*	<0.001
Median (IQR)	56.0 (54.0 – 61.0)	45.0 (44.0 – 51.50)			55.0 (53.0- 59.50)	45.0 (42.50- 49.50)		
SWAVE (cm\s)								
Min. – Max.	13.20 – 18.90	9.70 – 15.20			12.0-18.50	9.50-15.20		
Mean ± SD.	17.28 ± 1.42	13.03 ± 1.32	t=12.352*	<0.001*	15.56±1.71	11.90±1.87	t=14.659*	<0.001
Median (IQR)	17.70 (16.40 – 18.35)	13.20 (12.40 – 14.10)			15.80 (14.15- 16.75)	12.00 (10.20- 13.35)		

IQR: Interquartile range, SD: Standard deviation, t: Paired t-test, p: p-value for comparing the studied groups' pre and post results, \*: Statistically significant at  $p \leq 0.05$

The RV free wall longitudinal strain % showed a significant reduction ( $P < 0.001^*$ ) after 6 months in both surgical and transcatheter ASD closure groups. As well as the global RV strain % which showed a significant decrease in both groups, surgical and transcatheter closure  $P < 0.001^*$ . Regarding peak systolic strain (PSS) of 6 segments of lateral (free) and septal walls, there was a significant decrease in peak systolic strain of apical, mid, and basal RV free walls after surgical and transcatheter ASD closure (p-value was  $P < 0.001^*$  for all three segments). While the peak systolic strain (PSS) of all three segments of the septum (apical, mid, and basal) showed insignificant differences after surgical ASD closure with p values of (0.751, 0.711, 0.377) respectively. As well as in group B (PSS) of septal segments could show insignificant

differences after 6 months of ASD device closure with p-values of (0.879, 0.304, and 0.282) respectively. Table 4

**Table 4: Strain indices results in pre and post-closure in both groups**

Global longitudinal free wall strain %	Group A				Group B				
	Min. – Max.	-26.33 – -20.66			Min. – Max.	-26.0 – -20.33			
Mean ± SD.	-28.48 ± 10.52	-23.24 ± 1.43	Z=4.590*	<0.001*	Mean ± SD.	-29.39 ± 1.25	-22.47 ± 1.42	Z=5.163*	<0.001*
Median (IQR)	-30.33 (-30.66 – -29.49)	-23.0 (-24.17 – -22.33)			Median (IQR)	-29.33 (-30.33 – 28.47)	-22.33 (-23.0 – -21.33)		
Global longitudinal systolic strain%	pre	post			p	Global longitudinal systolic strain %	pre		
Min. – Max.	-29.16 – 25.16	-25.50 – 23.50	Z=5.161*	<0.001*	Min. – Max.	-28.60 – 24.16	-25.16 – -21.66	Z=5.162*	<0.001*
Mean ± SD.	-27.13 ± 0.84	-22.31 ± 8.02			Mean ± SD.	-26.73 ± 0.78	-23.23 ± 0.95		
Median (IQR)	-27.0 (-27.58 – 26.66)	-23.50 (-24.40 – -22.80)			Median (IQR)	-26.66 (-27.23 – 26.33)	-23.16 (-23.90 – 22.50)		

IQR: Interquartile range, SD: Standard deviation, Z: Wilcoxon signed ranks test, p: p-value for comparing between pre and post subgroups, \*: Statistically significant at  $p \leq 0.05$

## Discussion

In patients with a left to right shunt or other RV disorders, the systolic function is an important prognostic sign. Before ASD repair, prior studies found that RV systolic function parameters were normal or exaggerated in open ASD and that these parameters were reduced to normal or subnormal values following the procedure [14, 15]. We measured TAPSE, S' wave velocity, FAC, and global longitudinal strain by 2D speckle tracking analysis as the main parameters for RV systolic function. hence, cardiac remodeling occurs in the first few months after ASD

closure, and a 3- to 6-month follow-up period is sufficient to demonstrate the RV remodeling effect. [16, 17]

Our results met with Kumar P et al. [24] observations on 14 patients who had surgical correction of ASD, they had reported a significant reduction of TAPSE ( $23.71 \pm 1.6$  mm vs  $-19.50 \pm 1.41$  mm after 3 months of surgical closure,  $P < 0.0001$ ). Contrarily, in disagreement with our results Balci et al. [25] included 19 patients with mean age ( $40.0 \pm 13.51$ ) and couldn't observe changes in TAPSE after ASD percutaneous closure after 3 months of closure ( $2.49 \pm 0.46$  cm vs  $2.51 \pm 0.32$  cm,  $p=0.078$ ). This discrepancy between our results might be due to the short-term follow-up in their study and limited patient sample size as well as the difference in the mean age between our patients

In concordance with our results, Vijayvergiya et al. [26] Also had revealed a significant reduction in RV systolic function following 6 months of surgical closure of ASD, by comparing results for S' wave, ( $17.75 \pm 3.5$ ) cm/s in open ASD vs ( $11.55 \pm 4.9$ ) cm/s at one-month post-surgery vs  $11.60 \pm 3.4$  cm/s at 6-month post-surgery ( $p < 0.001$ )

In line with our results, Akula et al. [19] found a significant reduction in tricuspid annular systolic velocity from  $16.0 \pm 2.8$  cm/sec to  $13.1 \pm 3.0$  cm/s after one-month vs  $13.7 \pm 2.8$  cm/s after 6 months of ASD closure after including Seventy-three patients with a range of age 26 - 17 years in their study.

Our results were in agreement with Vitarelli et al. [18] who evaluated 39 patients before and 6 months after closure and demonstrate a significant reduction in RVFAC (%)  $58 \pm 12$  to  $52 \pm 9$  ( $p < 0.05$ ).

Also, Eroglu et al. [22] results regarding RVFAC met our results as FAC (%) decreased significantly from  $53.2 \pm 4.3$  to  $40.6 \pm 4$  at 24 H post-closure vs  $45.7 \pm 5$  after 1 month of closure

$p < 0.0001$ , of note, that in Eroglu's study the RV systolic function indices (as RVEF, TAPSE, RVFAC, RVMPI) had shown decrease immediately after 24 hours of closure, with re increase to near baseline values at first month which could be similar to acute, transient deterioration of RV function immediately after unloading of RV.

On the contrary, Islami et al. [27] results regarding RVFAC in the post-closure group were significantly increased compared to pre-closure results, which was not in agreement with our results. Their results regarding RV FAC were  $37.6 \pm 8.8$  in open ASD vs  $48.6 \pm 7.3$  in the post-closure group, this discrepancy with our results may be related to significant lower basal FAC in their open ASD patients compared to their control group, so their ASD patients might have a mild basal degree of RV systolic dysfunction which improved after ASD closure, on contrary to our open ASD patients' results, which couldn't show any abnormal lower basal FAC, and all the post-closure results decreased to normal ranges.

Keeping with our results Di Salvo et al. [28] showed a significant decrease in the global longitudinal strain of the RV free wall, although their values dropped to subnormal levels after 6 months of ASD closure in the post-surgical group and this was consistent with prior research, (194-195) [29, 30] they had attributed their results to the direct effect of cardiopulmonary bypass on RV function, as well as the effect of greater myocardial temperature during surgery owing to its exposed position in the mediastinum [29]

Our results were also augmented by Suzuki et al. [30] findings after investigating the effect of ASD closure either surgically or by percutaneous device closure on 120 adult patients with ASD at 6 months after closure as in our study. In their group of patients without residual symptoms RV-GLS % had shown significant reduction (from  $-28 \pm 11$  to  $-24 \pm 7\%$   $P < 0.01$ ) after closure which met our results. However, RV-GLS % showed a non-significant increase in ASD

patients with residual symptoms after ASD closure in their results ( $-20 \pm 7$  in pre-closure vs  $-21 \pm 8$  at 6 months follow up after closure), of note that we didn't report any patients with residual symptoms after closure in our cohort, and this may be the cause of the discrepancy between the results of this symptomatic group and our asymptomatic patients.

Additionally, our results were augmented by Bussadori et al. [31] results after including 21 adult patients with a Mean age of  $28 \pm 9.5$  ranging from 18–49 years, they could report a significant reduction in the global longitudinal RV strain%, ( GLS of  $-23.95 \pm 5.24$  before closure vs  $-17.04 \pm 5.94$ ) after 24 hours of ASD Closure with a p-value of 0.00016. Also, Bussadori et al. [31] results of the 3 segments free wall PSS could demonstrate significant reduction, with no significant reduction in the three segments of the septal PSS, which met with our finding after 6 months of ASD closure.

Also, our results were agreed by Jategaonkar et al. [14] reported a significant reduction in the GLS of the right ventricle after ASD closure at 3 months of follow up  $23.4 \pm 4.5$  vs  $21.4 \pm 4.3$   $p < 0.05$ . Additionally, their results revealed a significant reduction of the PSS of the lateral mid-wall segment  $29.4 \pm 7.7$  in pre-closure vs  $26.6 \pm 6.3$  in the post-closure group  $p < 0.05$ , and in the lateral wall apical segment PSS  $27.0 \pm 6.7$  in pre-closure vs  $24.3 \pm 6.4$  in post-closure group,  $p < 0.05$  which met with our results.

However, in contrast to our results of the septal apical segments PSS, Jategaonkar et al. [14] showed a significant reduction in their results  $21.2 \pm 7.4$  in the preclosure group vs  $17.9 \pm 7.1$  in the post-closure group  $p < 0.05$ , and this didn't match our results as we demonstrated non-significant changes in PSS of the septal apical segment in post-closure group.

In addition, the contradiction between our results and Jategaonkar et al. [14] was regarding basal lateral segment PSS, as we could observe a significant reduction in PSS of the basal lateral

segment after ASD closure, which was not in line with Jategaonkar et al. [14] hence they couldn't find significant difference regarding this segment after ASD closure. This discrepancy between results might be because they examine their patients after 3 months of closure so Basal segment remodeling hadn't occurred yet as proved by Ko HK et al. [32] when they demonstrated remodeling in the basal segment at 6 months follow up post closure.

Our results regarding RV lateral basal segment were in agreement with Di Salvo et al. [28] when they enrolled two groups the first one included 15 patients with successful ASD device closure with a mean age of 9-3 years), While the second group included 15 age- and gender-matched patients after successful ASD surgical closure with the mean age (of 9-3 years). They had documented reduced RV lateral basal segment deformation in post-closure patients and also noticed that reverse remodeling of the basal segment might not have happened until 6-months post-closure because all of their patients had ASD closure more than 6 months before their research. And this was in line with our results regarding the RV lateral basal segment in post device closure group.

However, our results of insignificant reduction in mid and basal septal segments in the post catheter closure group were not in line with Di Salvo et al. [28] results in their ASD-Device post-closure group as On the basal and mid-segments of the interventricular septum, they found a considerable decrease in longitudinal regional deformation values. This was due to the deposition of a non-contractile component within the interatrial septum, which impacts the shortening of the septal wall's basal and mid segments. This supported a previous study showing that device size, site, and distance between the device and the mitral annulus all affect the severity of septal longitudinal function impairment.<sup>[33]</sup>

On contrary with our results, Agha et al. [34] results after assessment of strain by 2D speckle tracking study of RV after 6 months of device closure in pediatric age group. There was a significant increase in the RV global longitudinal strain (GLS) 6 months post-ASD closure. ( $-20.17 \pm 3.14\%$  in the pre-closure group vs  $-25.86 \pm 5.02\%$  in the post-closure group,  $p < 0.0001$ ), which was not in agreement with our results, however in Agha et al. [34] the range of their patients' age was (3-9) years, and a mean value of  $(6.01 \pm 3.19)$  so they included only the pediatric age group and didn't include adult patients as in our study.

On the other hand, Suzuki M et al. [30] results had some discrepancy with ours regarding strain indices, as after including 120 adult patients with ASD in their study, they could observe blunted response and non-significant difference in RV GLS %  $-20 \pm 7$  Vs  $-21 \pm 8$  after 6 months of ASD closure in their group of patients with residual symptoms. Furthermore, Suzuki M could also observe a significant reduction of RV GLS in the subgroup of patients without persistent symptoms after ASD closure (from  $-28 \pm 11$  to  $-24 \pm 7\%$ ,  $P < 0.01$ ), and this was in agreement with our study.

RV-GLS was considered by Suzuki M et al. [30] to be an important marker of RV myocardial irreversible impairment, which may lead to persistent symptoms even after ASD closure has been completed. As a result of RV volume overload and compensatory mechanisms like RV dilation and myocardial hyper contraction, the previously stated disparity in their study's outcomes may be explained.[30] Myocardial damage will ensue as a result of prolonged RV hyper contraction and myocardial overstretch. [6] Because of the lower PVR, the pulmonary vasculature can initially receive a large volume of cardiac output. Chronic pulmonary overflow generates shear stress on the pulmonary artery endothelium, leading to pulmonary vasculopathy. Due to the persistent rise in PA pressure, even after ASD closure, RV "unloading" could not be

completed in those patients with persisting symptoms, suggesting that these patients had already exhausted their hemodynamic reserve capacity. It should be noticed that there was no increase in pulmonary artery pressure nor residual symptoms in our patients after ASD closure and this may explain the discrepancy between our results.

Due to current technology's limitations, which don't allow for measurements of RV radial or circumferential deformation, we were only able to measure longitudinal strain, yet RV contraction is thought to be mainly longitudinal. It was not possible to anticipate the long-term effects of ASD closure on RV function from our study, as the sample size was small and the follow-up was limited to a mid-term period. As a result, in order to corroborate our findings, studies with a bigger sample size and long-term follow-up should be conducted, as well as additional research. Absence of control group to compare pre and post results. Adults and children are included in our study. In future studies, pediatric and adult patients should be assessed separately, particularly when examining changes in the size of the heart chambers.

## **Conclusion**

The right ventricle's size and function are affected by a large shunt caused by an ASD secundum. ASD and its consequent volume overload resulted in higher RV myocardial contraction, leading to an increase in strain values and RV systolic function indices, which were reduced and returned to normal values when the left-to-right shunt was eliminated, and the defect was closed. Two-dimensional strain measurements provide a distinct tool for the assessment of global and regional cardiac function. Myocardial fibers on the right side of the interventricular septum appear to be less affected by right ventricular volume overload than those on the free wall of the right ventricle. A consistent indicator of right ventricular function, particularly RV free wall strain, appears to be based on loading conditions.

## References

1. Baumgartner H, De Backer J, Babu-Narayan SV, et al.. 2020 ESC Guidelines for the management of adult congenital heart disease. *Eur Heart J*. 2021;**42**:563-645. <https://doi.org/10.1093/eurheartj/ehaa554>
2. Therrien J, Webb G. Clinical update on adults with congenital heart disease. *Lancet*. 2003;**362**:1305-13. [https://doi.org/10.1016/s0140-6736\(03\)14574-6](https://doi.org/10.1016/s0140-6736(03)14574-6)
3. Brida M, Chessa M, Celermajer D, et al.. Atrial septal defect in adulthood: a new paradigm for congenital heart disease. *Eur Heart J*. 2022;**43**:2660-71. <https://doi.org/10.1093/eurheartj/ehab646>
4. McCarthy K, Ho S, Anderson R. Defining the morphologic phenotypes of atrial septal defects and interatrial communications. *Images Paediatr Cardiol*. 2003;**5**:1-24.
5. Bruaene AV, Meester PD, Buys R, et al.. Right ventricular load and function during exercise in patients with open and closed atrial septal defect type secundum. *Eur J Prev Cardiol*. 2013;**20**:597-604. <https://doi.org/10.1177/2047487312444372>
6. Van De Bruaene A, La Gerche A, Prior DL, et al.. Pulmonary vascular resistance as assessed by bicycle stress echocardiography in patients with atrial septal defect type secundum. *Circ Cardiovasc Imaging*. 2011;**4**:237-45. <https://doi.org/10.1161/circimaging.110.962571>
7. Takaya Y, Akagi T, Kijima Y, et al.. Long-term outcome after transcatheter closure of atrial septal defect in older patients: impact of age at procedure. *JACC Cardiovasc Interv*. 2015;**8**:600-6. <https://doi.org/10.1016/j.jcin.2015.02.002>
8. Kaya MG, Ozdoğru I, Baykan A, et al.. [Transcatheter closure of secundum atrial septal defects using the Amplatzer septal occluder in adult patients: our first clinical experiences]. *Turk Kardiyol Dern Ars*. 2008;**36**:287-93.
9. Omeish A, Hijazi ZM. Transcatheter closure of atrial septal defects in children & adults using the Amplatzer Septal Occluder. *J Interv Cardiol*. 2001;**14**:37-44. <https://doi.org/10.1111/j.1540-8183.2001.tb00709.x>
10. Lang RM, Badano LP, Mor-Avi V, et al.. Recommendations for cardiac chamber quantification by echocardiography in adults: an update from the American Society of Echocardiography and the European Association of Cardiovascular Imaging. *Eur Heart J Cardiovasc Imaging*. 2015;**16**:233-70. <https://doi.org/10.1093/ehjci/jev014>
11. Silvestry FE, Cohen MS, Armsby LB, et al.. Guidelines for the Echocardiographic Assessment of Atrial Septal Defect and Patent Foramen Ovale: From the American Society of Echocardiography and Society for Cardiac Angiography and Interventions. *J Am Soc Echocardiogr*. 2015;**28**:910-58. <https://doi.org/10.1016/j.echo.2015.05.015>
12. Rudski LG, Lai WW, Afilalo J, et al.. Guidelines for the echocardiographic assessment of the right heart in adults: a report from the American Society of Echocardiography endorsed by the European Association of Echocardiography, a registered branch of the European Society of Cardiology, and the Canadian Society of Echocardiography. *J Am Soc Echocardiogr*. 2010;**23**:685-713; quiz 86-8. <https://doi.org/10.1016/j.echo.2010.05.010>
13. Badano LP, Kolas TJ, Muraru D, et al.. Standardization of left atrial, right ventricular, and right atrial deformation imaging using two-dimensional speckle tracking echocardiography: a consensus document of the EACVI/ASE/Industry Task Force to standardize deformation imaging. *Eur Heart J Cardiovasc Imaging*. 2018;**19**:591-600. <https://doi.org/10.1093/ehjci/jey042>
14. Jategaonkar SR, Scholtz W, Butz T, et al.. Two-dimensional strain and strain rate imaging of the right ventricle in adult patients before and after percutaneous closure of atrial septal defects. *Eur J Echocardiogr*. 2009;**10**:499-502. <https://doi.org/10.1093/ejehocard/jen315>

15. Jategaonkar S, Scholtz W, Schmidt H, et al.. Percutaneous closure of atrial septal defects: echocardiographic and functional results in patients older than 60 years. *Circ Cardiovasc Interv.* 2009;**2**:85-9. <https://doi.org/10.1161/circinterventions.108.814046>
16. Thilén U, Persson S. Closure of atrial septal defect in the adult. Cardiac remodeling is an early event. *Int J Cardiol.* 2006;**108**:370-5. <https://doi.org/10.1016/j.ijcard.2005.05.042>
17. Bettencourt N, Salomé N, Carneiro F, et al.. Atrial septal closure in adults: surgery versus amplatzer--comparison of results. *Rev Port Cardiol.* 2003;**22**:1203-11.
18. Vitarelli A, Sardella G, Roma AD, et al.. Assessment of right ventricular function by three-dimensional echocardiography and myocardial strain imaging in adult atrial septal defect before and after percutaneous closure. *Int J Cardiovasc Imaging.* 2012;**28**:1905-16. <https://doi.org/10.1007/s10554-012-0022-8>
19. Akula VS, Durgaprasad R, Velam V, et al.. Right Ventricle before and after Atrial Septal Defect Device Closure. *Echocardiography.* 2016;**33**:1381-8. <https://doi.org/10.1111/echo.13250>
20. Chaturvedi RR, Lincoln C, Gothard JW, et al.. Left ventricular dysfunction after open repair of simple congenital heart defects in infants and children: quantitation with the use of a conductance catheter immediately after bypass. *J Thorac Cardiovasc Surg.* 1998;**115**:77-83. [https://doi.org/10.1016/s0022-5223\(98\)70446-5](https://doi.org/10.1016/s0022-5223(98)70446-5)
21. Wranne B, Pinto FJ, Siegel LC, et al.. Abnormal postoperative interventricular motion: new intraoperative transesophageal echocardiographic evidence supports a novel hypothesis. *Am Heart J.* 1993;**126**:161-7. [https://doi.org/10.1016/s0002-8703\(07\)80024-x](https://doi.org/10.1016/s0002-8703(07)80024-x)
22. Eroglu E, Cakal SD, Cakal B, et al.. Time course of right ventricular remodeling after percutaneous atrial septal defect closure: assessment of regional deformation properties with two-dimensional strain and strain rate imaging. *Echocardiography.* 2013;**30**:324-30. <https://doi.org/10.1111/echo.12053>
23. Suffoletto MS, Dohi K, Cannesson M, et al.. Novel speckle-tracking radial strain from routine black-and-white echocardiographic images to quantify dyssynchrony and predict response to cardiac resynchronization therapy. *Circulation.* 2006;**113**:960-8. <https://doi.org/10.1161/circulationaha.105.571455>
24. Kumar P, Sarkar A, Kar SK. Assessment of ventricular function in patients of atrial septal defect by strain imaging before and after correction. *Ann Card Anaesth.* 2019;**22**:41-6. [https://doi.org/10.4103/aca.ACA\\_153\\_17](https://doi.org/10.4103/aca.ACA_153_17)
25. Balcı KG, Balcı MM, Aksoy MM, et al.. Remodeling process in right and left ventricle after percutaneous atrial septal defect closure in adult patients. *Turk Kardiyol Dern Ars.* 2015;**43**:250-8. <https://doi.org/10.5543/tkda.2015.57106>
26. Vijayvergiya R, Singh J, Rana SS, et al.. Early and six-month assessment of bi-ventricular functions following surgical closure of atrial septal defect. *Indian Heart J.* 2014;**66**:617-21. <https://doi.org/10.1016/j.ihj.2014.10.411>
27. İslamlı A, Cümşüdoğru K, Bilgin M, et al.. Transcatheter Closure of Atrial Septal Defect and the Effects on Right Ventricular Function; Strain and Strain Rate Echocardiography. *J Am Coll Cardiol.* 2013;**62**:175-6.
28. Di Salvo G, Drago M, Pacileo G, et al.. Comparison of strain rate imaging for quantitative evaluation of regional left and right ventricular function after surgical versus percutaneous closure of atrial septal defect. *Am J Cardiol.* 2005;**96**:299-302. <https://doi.org/10.1016/j.amjcard.2005.02.060>
29. Dhillon R, Josen M, Henein M, et al.. Transcatheter closure of atrial septal defect preserves right ventricular function. *Heart.* 2002;**87**:461-5. <https://doi.org/10.1136/heart.87.5.461>
30. Suzuki M, Matsumoto K, Tanaka Y, et al.. Preoperative coupling between right ventricle and pulmonary vasculature is an important determinant of residual symptoms after the closure of atrial septal defect. *Int J Cardiovasc Imaging.* 2021;**37**:2931-41. <https://doi.org/10.1007/s10554-021-02282-4>

31. Bussadori C, Oliveira P, Arcidiacono C, et al.. Right and left ventricular strain and strain rate in young adults before and after percutaneous atrial septal defect closure. *Echocardiography*. 2011;**28**:730-7. <https://doi.org/10.1111/j.1540-8175.2011.01434.x>
32. Ko HK, Yu JJ, Cho EK, et al.. Segmental Analysis of Right Ventricular Longitudinal Deformation in Children before and after Percutaneous Closure of Atrial Septal Defect. *J Cardiovasc Ultrasound*. 2014;**22**:182-8. <https://doi.org/10.4250/jcu.2014.22.4.182>
33. Lange A, Coleman DM, Palka P, et al.. Effect of catheter device closure of atrial septal defect on diastolic mitral annular motion. *Am J Cardiol*. 2003;**91**:104-8. [https://doi.org/10.1016/s0002-9149\(02\)03013-8](https://doi.org/10.1016/s0002-9149(02)03013-8)
34. Agha HM, Mohammed IS, Hassan HA, et al.. Left and right ventricular speckle tracking study before and after percutaneous atrial septal defect closure in children. *J Saudi Heart Assoc*. 2020;**32**:71-8. <https://doi.org/10.37616/2212-5043.1012>

UNDER PEER REVIEW