

Original Research Article

Purification of β -Glucosidase, one of the flavor-enhancing food enzymes, from Peppermint (*Mentha piperita* L.) and its Biochemical Characterization

Abstract

Aims: Determination of the biochemical properties of β -glucosidase in peppermint, which is rich in aromatic compounds.

Study Design: β -glucosidase was purified from mint, and biochemical characterization of the purified enzyme was performed.

Place and Duration of Study: This study was carried out in the Faculty of Arts and Sciences Biochemistry laboratory.

Methodology: Enzyme purification was performed by hydrophobic interaction chromatography using a Sepharose 4B-L-tyrosine-1-naphthylamine gel. Optimum pH, temperature, and substrate specificity of the purified enzyme were determined. The effects of glucose, δ -gluconolactone and some heavy metals on the enzyme activity were investigated.

Results: The enzyme was purified with 8-fold and 28% yield. The purified protein from mint was visualized at 65 kDa on SDS-PAGE. The substrate specificity of the purified β -glucosidase from mint was determined against *para*- and *ortho*-nitrophenyl β -D-glucopyranoside (*p/o*-NPG) substrates. The K_m values were 0.4 mM and 0.9 mM, and the V_{max} values were 102.2 EU and 96.6 EU, respectively. While the optimum pH for the purified enzyme was 6, the optimum temperature was 35 °C. Effects of heavy metals Ag^{+2} , Fe^{+3} , Zn^{+2} , Cu^{+2} , and Pb^{+2} on the purified enzyme activity were investigated. Relative activities of heavy metals were introduced into the reaction medium as 0.75 mM samples without any known inhibitors in the environment. Fe^{+3} increased the enzyme activity, and Ag^{+2} , Pb^{+2} , Cu^{+2} , and Zn^{+2} inhibited the enzyme, and their relative activities were 78%, 76%, 22%, and 31%, respectively. Glucose and δ -gluconolactone competitively inhibited the enzyme activity when *p*-NPG was the substrate. K_i values of glucose and δ -gluconolactone were determined as 0.034 ± 0.001 mM and 0.038 ± 0.002 mM, respectively.

Conclusion: Determination of the biochemical properties of β -glucosidase from mint, which has commercial and pharmacological importance due to the phenolic substances it contains, will contribute to studies on improving food quality.

Keywords: *Mentha piperita* L.; enzymes; hydrolyses; β -glucosidase; hydrophobic interaction chromatography; characterization

1. Introduction

Peppermint is a perennial herb cultivated in many places around the world. The most well-known properties of mint are its flavoring functions and scent. Fresh or dried mint leaves and the essential oil derived from the plant have been widely used in the food, cosmetics, and drug industries[1]. Peppermint takes place in the alternative medicine list due to its properties and benefits for human health. Diseases such as biliary disorders, indigestion, enteritis, bloating, intestinal colic, gastritis and spasms, and gastrointestinal disorders (GI) are among the ailments thought to be treated. Peppermint is also a popular herbal tea. Phenolic compounds found in plants consumed as tea are considered natural antioxidants[2]. The dry weight of peppermint leaves includes phenolic compounds, about 19-23%, while about 12% contain flavonoids such as hesperidin, eriocitrin, and rosmarinic acid[3]. Many studies suggest these compounds have antioxidant, antigenotoxic, antiallergic, and antitumoral effects[4-7]. Various flavone and flavanone compounds such as luteolin, apigenin, and hesperidin were analyzed in peppermint. Peppermint is considered an antioxidant because flavones are involved in the linoleic acid oxidation system[8]. Plants contain phenolic compounds in the form of glycosides. The glycosidic bonds of glycosides are hydrolyzed by glycoside hydrolase and polysaccharide enzymes in plants[9]. As glycosyl hydrolases, β -glucosidases are the key enzymes of carbohydrate metabolism, taking place in almost every living thing, including plants, fungi, mammals, and bacteria[10].

Comment [o1]: rephrase

Comment [o2]: rephrase

Comment [o3]: antitumor

Comment [o4]: rephrase

There are many types of β -glucosidic flavor precursors in plants. Phenolic substances, released when their aglycones are separated from the glycon, increase the flavor of foods and beverages produced from these plants[11]. The hydrolysis of glycosidic flavor precursors effectively develops fruit juice and wine aroma. Different types of grapes, fungus, and yeast glycosidase enzymes have been a broad subject of research as they can take part in the hydrolysis of glycosides[12-14]. The enzyme was purified from several sources such as tea leaves[15, 16], vanilla[17], soybean[18], chayote[19], orange[20], olive[21], white button mushroom[22], and analyzed in terms of its biochemical properties. Generally, β -glucosidases are found in plant tissues and hydrolyze glucosidic flavor precursors to reveal the aromatic aglycone moiety. β -glucosidases obtained from source plants or other sources such as microorganisms are used as food enzymes. It can be added to food and beverages in food processing steps to improve food quality. For this purpose, β -glucosidases were investigated by many researchers in food technology and biotechnology [11].

Comment [o5]: rephrase

Comment [o6]: has been

The immobilization of β -glucosidase increased the catalytic performance of the enzyme on metal ions chelated magnetic nanoparticles[23]. Çelik et al. immobilized β -Glucosidase on the chitosan-MWCNTs carrier and investigated its flavor-enhancing effect in different tea samples. They detected aromatic precursors in tea samples, including black tea, yerba mate, green tea, balm tea, and sage, before and after treatment with immobilized β -glucosidase and showed the number of flavor compounds in all samples increased significantly[24]. In a similar study, β -Glucosidase was immobilized on the surface of nano-magnetic iron oxide, and its aroma and flavonoid aglycon enhancing effect in tea soup was investigated. Immobilized β -glucosidase treatment increased the flavor content of green tea and black tea preparations by approximately 16% and 48%, respectively. In green and black tea preparations, flavonoid aglycones, including myricetin, kaempferol, and quercetin, increased about 65 and 5 times, respectively[25]. In another study, β -

Comment [o7]: please check the word

Comment [o8]: delete

Glucosidase and β -xylosidase were analyzed for their capability to improve the instant green tea flavor. Researchers found that β -glucosidase treatment significantly enhances floral and grassy features due to increases in geraniol, nonanal, and cis-3-hexene-1-ol[26].

Comment [o9]: move to discussion

This study aims to purify mint β -glucosidase and determine its biochemical properties. The richness of mint in terms of its phenolic compound content and the antioxidant effects in teas and food have made it essential to determine the biochemical properties of β -glucosidase. We consider that the obtained results will contribute to food improvement studies.

Comment [o10]: this statement should come before the aim of the study

2. Materials and methods

2.1. Plant Material

The mint plant used in the study was obtained from Balıkesir/Turkey and collected in April and May. All parts of the plant were used in the experiments.

2.2. Chemicals

L-tyrosine, Sepharose-4B, 1-naphthylamine, *p*-NPG, *o*-NPG, *p*-NP, *o*-NP, glucose, δ -gluconolactone, EDTA, phenylmethanesulfonyl fluoride (PMSF), dithiothreitol (DTT), protein assay reagents and chemicals for electrophoresis were obtained from Sigma-Aldrich Company. Buffers and other chemicals used for preparation were of the best available grade.

Comment [o11]: located where?

2.3. Enzyme Extraction

Firstly, acetone powder was prepared using Kara's method[21]. The obtained acetone powder was contained in the fridge at $-20\text{ }^{\circ}\text{C}$ until used. To prepare extraction, 1 gr of acetone powder was homogenized for 2 minutes with 25mL of extraction buffer [(100mM borate buffer containing 5mMEDTA, 1mMphenylmethanesulfonyl fluoride (PMSF), 0.25% (w/v) dithiothreitol (DTT), pH 9)] with Stuart SHM1 homogenizer. The homogenate was centrifuged at 15,000 rpm for 30 minutes, and the supernatant was used as the crude extract.

Comment [o12]: stored

Comment [o13]: extract

Comment [o14]: 1 g

2.4. Enzyme Purification

Enzyme purification was performed in two stages by modifying the method described by Kara et al.: i) Ammonium sulfate precipitation and ii) Hydrophobic interaction chromatography [21]. First of all, the precipitation range of ammonium sulfate in the crude extract was determined by us. Ammonium sulfate precipitation in 40-80% intervals was applied to the raw extract, and the final precipitate was dissolved in minimum volume by 50mMsodium phosphate buffer at pH 6.8. The resolving solution was implemented on a Sepharose 4B-L-tyrosine-1-naphthylamine hydrophobic gel column of 1x5cm. Before the sample was applied, the column was balanced with 50mM, pH 6.8, sodium phosphate buffer containing 1M of $(\text{NH}_4)_2\text{SO}_4$. After the sample was applied, it was eluted from the saline 50mM, pH 6.8, sodium

phosphate buffer containing 1M (NH₄)₂SO₄ to saltless 50mM, pH 6.8, sodium phosphate buffer by forming a gradient. The flow rate of the column during elution was 30mL/h. In the stage of hydrophobic interaction chromatography, eluents were taken into 2mL tubes; enzyme activities and qualitative protein amounts at 280nm were determined for each tube. During the chromatography stage, the 1.0-0.0M ammonium sulfate gradient started at the 24th tube and ended at the 35th tube. As a result of purification, tubes showing high β-glucosidase activity were pooled and used as pure enzyme sources.

2.5. Enzyme Activity Assay and Protein Determination

Mint β-glucosidase enzyme activity was assessed spectrophotometrically. 5mM *p*/*o*-NPG solutions were used as substrates. They were dissolved in 50mM, pH 5.5, sodium acetate buffer. 0.5M Na₂CO₃ was used as the reaction-stopping solution. 70 μL substrate and 70 μL enzyme solutions were introduced into the reaction environment and incubated for 30 minutes at 37 °C. The reaction was stopped at the end of the 30 minutes with 70μL of stopping solution. The resulting *p*/*o*-nitrophenols (*p*/*o*-NPs) were observed at 405nm and 420nm wavelengths, respectively, and absorbances were determined. The calibration curves of *p*/*o*-NPs were at respective wavelengths for calculating the enzyme activity. Enzyme activity measurements were made with the Thermo Scientific Multiscan GO device using a 96-well microtiter plate. An enzyme unit is defined as the enzyme that emits one μmol *p*/*o*-NP in one minute. Lowry method was used to determine quantitative proteins [27].

2.6. SDS-Polyacrylamide Gel Electrophoresis (SDS-PAGE)

The purity of mint β-glucosidase purified was checked by SDS polyacrylamide gel electrophoresis. SDS-PAGE was conducted based on the method described by Laemmli U.K.[28], and samples were subjected to 10% separation gel. Among the resulting fractions obtained from hydrophobic interaction chromatography, the sample showing the highest activity was subjected to the separation gel. Protein molecular weight marker containing the following standards was used; β-galactosidase (116.0 kDa), bovine serum albumin (66.2 kDa), ovalbumin (45.0 kDa), lactate dehydrogenase (35.0 kDa), REase Bsp98I (E. coli) (25.0 kDa), β-lactoglobulin (18.4 kDa) and Lysozyme (14.4 kDa). SDS-PAGE was achieved using Bio-Rad Mini-Protean Electrophoresis System.

Comment [o15]: delete

2.7. Determination of Optimum pH and Temperature

The effects of pH on the purified enzyme were measured under pH values changed between 2.0 and 10.0. For this, 50 mM sodium acetate (2.0-6.5) and phosphate (6.5-10.0) were used as buffers, and *p*-NPG was used as substrate. Activity measurements were achieved as described in the enzyme assay section.

For optimum temperature determination, the reaction mixture was kept at temperatures ranging from 25 °C to 65 °C, and enzyme activities were measured. The reaction environment consisting of the enzyme and the substrate of 5mM *p*-NPG was

Comment [o16]: delete

incubated in the water bath at different temperatures (25 - 65 °C) for 30 minutes. The reaction was stopped using 0.5M sodium carbonate. After the enzyme activities for each temperature value were measured, the temperature with the highest activity was taken as 100%, and % residue values were calculated for the remaining values.

Comment [o17]: delete

Comment [o18]: percentage

2.8. Determination of Kinetic Parameters and Inhibition Studies

K_m and V_{max} values of purified mint β-glucosidase against (*p*-NPG) and (*o*-NPG) substrates were calculated from the Lineaweaver-Burk graph. The enzyme activities were found in different reaction environment concentrations of *p/o*- NPG substrate (0.35mM - 2.3 mM), and 1/V - 1/[S] graphs were produced. K_m and V_{max} values were computed using graph equations.

Comment [o19]: write in full before abbreviation

Comment [o20]: delete

The relative activities of heavy metals, Ag⁺², Fe⁺³, Zn⁺², Cu⁺², and Pb⁺², were calculated to determine their effects on the purified enzyme activity. In order to achieve this, relative activities of heavy metals introduced to the reaction environment as 0.75 mM samples were calculated against the uninhibited enzyme activity in the reaction mix.

Inhibition types of glucose and δ-gluconolactone, known as enzyme inhibitors, were determined by the Lineaweaver-Burk plot. For this 1/[S] - 1/[V], graphs of glucose were drawn in [I₁] = 0.1 mM and [I₂] = 0.2 mM concentrations, and the value was computed using graph equations. Similarly, 1/[S] - 1/[V] graphs of δ-gluconolactone were drawn in [I₁] = 0.05 mM and [I₂] = 0.25mM concentrations and the value was computed using graph equations.

Comment [o21]: delete

Comment [o22]: delete

3. Results and Discussion

Extraction and Purification

As the mint plant is rich in oil content, evacuating the oil was achieved by preparing an acetone powder. When previous studies were examined, some researchers also designed acetone powder in the purification studies of the β-glucosidase enzyme from olive fruit [21] and tea leaves [15]. Additionally, in another study that compared the enzyme activities of enzyme extracts derived from the flesh fruit or the acetone powder, the usage of acetone powder as a starting material for β-glucosidase purification was recommended [29]. Peppermint is an oil-containing herb, and using acetone powder to prepare crude extract is suitable for getting rid of oil pollution.

Comment [o23]: use a more appropriate word

Comment [o24]: rephrase

The purification of the mint β-glucosidase was performed in two steps using ammonium sulfate precipitation with a 40-50% ratio and hydrophobic interaction chromatography using Sepharose-4B-L-tyrosine-1- naphthylamine. The specific activity of the purified enzyme was 1396.99 EU/mg protein with a yield of 31% and a 7.86 purification fold (Table 1). The enzyme activity with elution pattern on the hydrophobic interaction column is shown in Fig. 1. The enzyme activity and the total protein concentrations (absorbance 280 nm) of all eluents collected were determined with the methods described in section 2.2.1. The tube with the highest enzyme activity was exposed to SDS-PAGE and was observed as a single band at 65 kDa, as seen in Fig 2. Our previous studies used the same method to purify β-glucosidase

Comment [o25]: Figure

Comment [o26]: Figure

from olive fruit and *Galleria mellonella* [21, 30]. Asic et al. purified β -glucosidase from white button mushrooms by the same method [22]. Different researchers have preferred chromatography methods for β -glucosidase purification. Ion exchange and gel filtration chromatography were used to purify β -glucosidase from the tea leaf. In this study, the enzyme was purified 117.0-fold with a 1.26% yield [15]. In another study on tea, isoenzyme A was partially purified by ion-exchange chromatography with a fold of 5.95 with 13.7% efficiency. In comparison, isoenzyme B partially purified a factor of 14.16 with 23.83% efficiency in this study [16]. Ünal et al. purified the β -glucosidase from Muscat of Bornova grapes using ion-exchange chromatography with 7.2 purification fold and 6.69% efficiency [31]. The enzyme was purified by a factor of 46.1 with 12.8% efficiency from apple seeds [32], by a factor of 6.8 with 26% efficiency from cherry fruit using ion-exchange chromatography and gel filtration chromatography [29], and by a factor of 7.2 with 8.4% efficiency from vanilla plants using ion-exchange chromatography first, and then by hydrophobic interaction chromatography and gel filtration chromatography [17]. In the purification made on soybeans, the enzyme was purified by a factor of 20 with 20% efficiency, using ion-exchange chromatography [18]. The purification from oranges has been reported that using ion-exchange chromatography followed by gel filtration chromatography can achieve a 489.5-fold yield of the enzyme [20]. Some studies use hydrophobic interaction chromatography for β -glucosidase purification [21, 22, 33].

Table 1. Purification steps of mint (*Mentha piperita* L.) β -glucosidase

Step	Volume (ml)	Activity (U/ml)	Total Activity (U/ml)	Content of Protein (mg/ml)	Total Protein (mg)	Specific Activity (U/mg)	% Yield	Purification Fold
Crude Extract	17.5	39.038	683.17	0.2196	3.843	177.77	100.0	1
Ammonium sulfate precipitation	4	53.750	215.00	0.2071	0.8284	259.54	31.5	1.46
Hydrophobic interaction chromatography	4	53.365	213.46	0.0382	0.1528	1396.99	31.2	7.86

Comment [o27]: mL

Comment [o28]: mL

Comment [o29]: mL

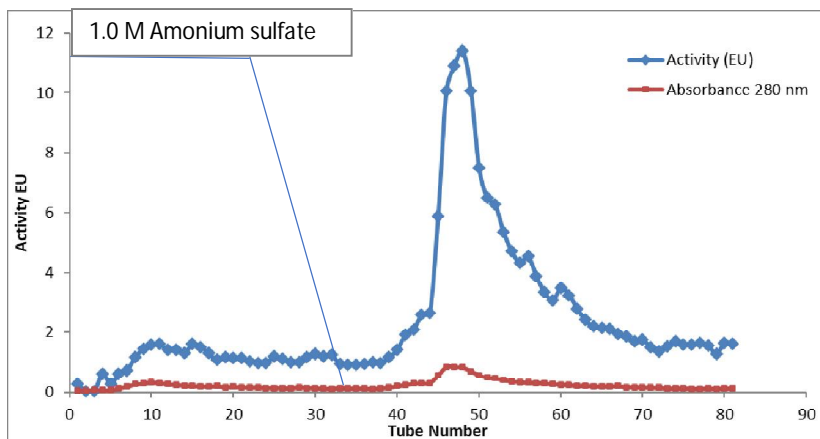


Fig. 1 Purification of mint (*Mentha piperita* L.) β -glucosidase by hydrophobic interaction chromatography. The enzyme activity and total protein amount collected all eluents in the chromatography stage. Graphs were created by processing the activity and protein amount data corresponding to the number of tubes collected. The decreasing Ammonium sulfate gradient was applied as 1.0-0 M and shown as a straight line in the graph.

Comment [o30]: in

Comment [o31]: use lowercase

The purity of the mint β -glucosidase was visualized on SDS-PAGE. The molecular weight of the enzyme was approximately 65 kDa (Fig.2). It was reported that β -glucosidase purified from different plant resources was 68 kDa in cherry [29], 64 kDa in orange [20], 41 kDa in tea [15], 67 kDa in gentian plants [33]. The purified enzyme from vanilla was 50 kDa on SDS-PAGE; however, it was observed on the native page at 201 kDa and reported tetramer [17]. Similarly, chayote β -glucosidase has been described as a 116 kDa protein composed of two 58 kDa subunits [19]. Romero-Segura et al. reported that olive β -glucosidase at 65.4 kDa [34], and similar Kara et al. reported it at 65 kDa [21]. The molecular weight of the mint β -glucosidase calculated at 65 kDa on the SDS-PAGE in our study is similar to the results of other β -glucosidase studies in the plants.

Comment [o32]: Figure

Comment [o33]: delete

Comment [o34]: PAGE

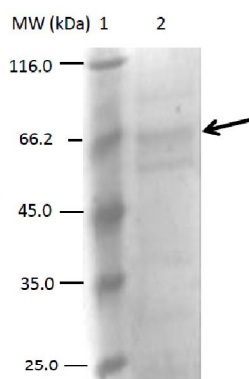


Fig. 2. SDS-PAGE image of the purified β -glucosidase from mint (*Mentha piperita* L.). Lane 1: Protein molecular weight marker Lane 1: molecular weight standards (β -galactosidase, 116 kDa; bovine serum albumin,

66.2 kDa; egg albumin, 45 kDa; lactate dehydrogenase, 35 kDa; Rease Bsp981 (E. coli), 25 kDa; β -lactoglobulin, 18.4 kDa; lysozyme, 14.4 kDa); lane 2: purified β -glucosidase.

Optimum temperature and pH

The reaction mix was carried out at temperatures changing from 25 to 70 °C to determine the optimum temperature for the enzyme activity. The effect of temperature on the peppermint β -glucosidase activity revealed the enzyme's maximal activity at 35 °C (Fig. 3). The enzyme activity under pH values changing from 2.0 to 10 was determined using *p*-NPG as a substrate. The peppermint β -glucosidase activity was optimum at pH 6.0 (Fig.4). Different researchers have reported the optimum pH and temperature values for β -glucosidase 5.5 and 40 °C for tea [15], 5.5 and 42 °C for olive [21], and 5.0 and 40 °C for cherry [20], respectively. Bornova grape β -glucosidase had optimum pH of 5.0 and a temperature of 55 °C [24], while a different study on tea found isoenzyme A temperature of 40 °C and pH of 5.0 as optimum values [16]. The optimum temperature of mint β -glucosidase is lower than that of some plant β -glucosidases, while the optimum pH appears to be similar to β -glucosidases of various plants.

Comment [o35]: delete

Comment [o36]: delete

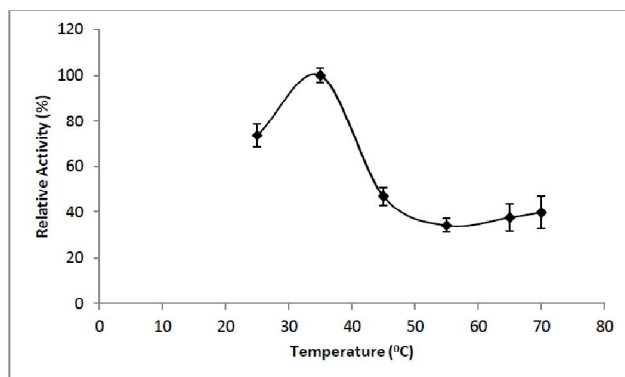


Fig. 3. Effect of temperature on purified β -glucosidase from mint (*Mentha piperita* L.)

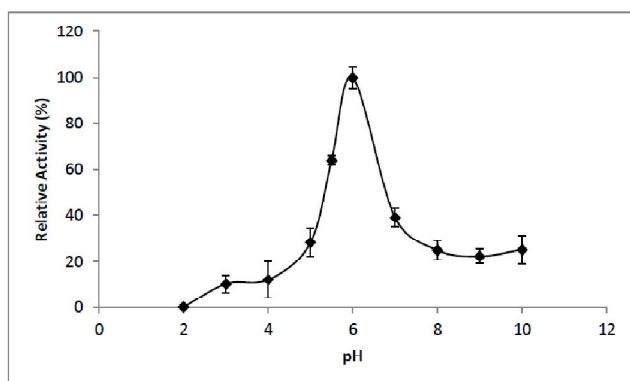


Fig. 4. Effect of pH on purified β -glucosidase from mint (*Mentha piperita* L.)

Kinetic Parameters of Substrates

The mint β -glucosidase kinetic parameters were determined over Lineweaver-Burk graphs with *p/o*-NPG substrates (Fig. 5 A, B). The K_m and V_{max} values for *p*-NPG were 0.4 mM and 102.2 EU, respectively, while these values were 0.9 mM and 96.9 EU for the *o*-NPG substrate, respectively. These results show peppermint β -glucosidase has a higher affinity for the *p*-NPGlu substrate. The purified β -glucosidase from orange displayed the highest affinity for the *p*-NPG to other substrates [20]. Similarly, β -glucosidase purified from soybeans [18], vanilla [17], tea [15], olive [21], and white button mushroom [22] had a high affinity for the *p*-NPG substrate. However, contrary to these results, β -glucosidase purified from cherry fruits had a higher affinity for the *o*-NPG substrate [29]. In a study conducted on plum seeds, when *p*-nitrophenyl β -D-fucopyranoside (*p*-NPF) was used as a substrate, it had an activity rate of 242.5% relative to the *p*-NPG substrate [35]. Kara et al. reported olive β -glucosidase enzyme's K_m and V_{max} values for the *p*-NPG substrate as 2.22 mM and 370.37 EU, respectively, and in the same study, the K_m and V_{max} values for the *o*-NPG substrate were 14.11 mM and 48.54 EU, respectively [21]. In another study by Chen et al., β -glucosidase purified from plum seeds had K_m values of 3.09 mM and V_{max} value of 219.6 EU for the *p*-NPG substrate [35]. K_m and V_{max} values of the purified β -glucosidase white button mushroom were 1.751 mM and 833 U/mg using the *p*-NPG substrate, while they were 8.547 mM and 556 U/mg for the *o*-NPG substrate [22]. The mint β -glucosidase has a higher affinity for the *p*-NPG substrate than the *o*-NPG substrate.

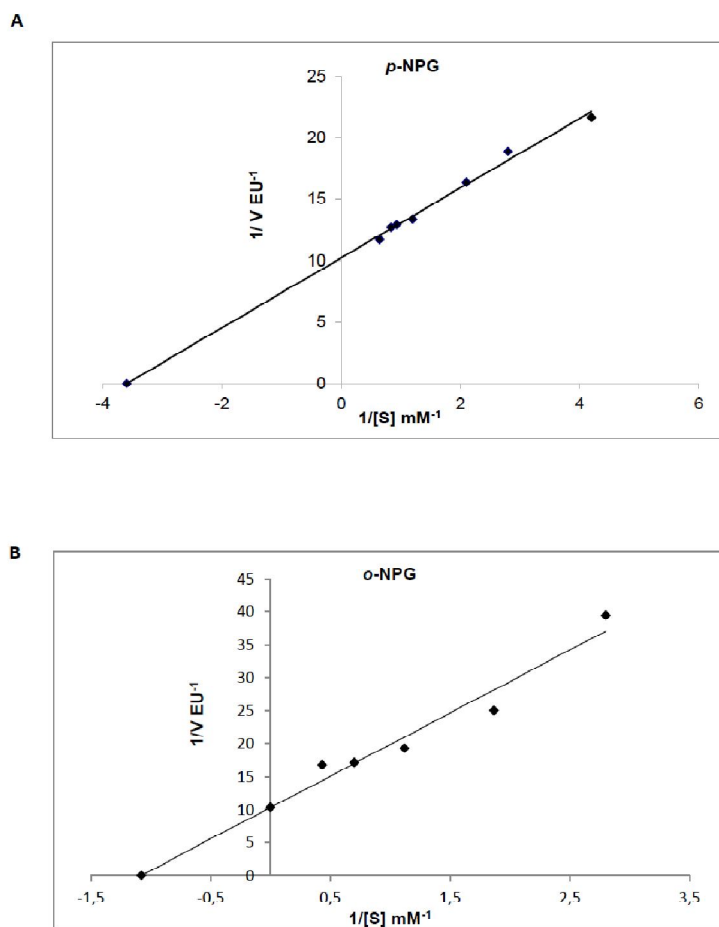


Fig. 5. Kinetic parameters of *p*-NPG and *o*-NPG substrate Lineweaver-Burk plots. **A.** Graph when using *p*-NPG as substrate. **B.** Graph when using *o*-NPG as substrate.

Effects of Heavy Metals

The effects of some heavy metals, including Ag^{+2} , Fe^{+3} , Zn^{+2} , Cu^{+2} , and Pb^{+2} on purified mint β -glucosidase activity are shown in Table 2. The relative activities of these heavy metals were calculated to determine their effects on the purified enzyme activity. Heavy metal ion concentration in the reaction medium was 0.75mM, and relative activities were calculated against the non-inhibitor enzyme activity. When the effects of Fe^{+3} , Ag^{+2} , Pb^{+2} , Zn^{+2} , and Cu^{+2} on purified peppermint β -glucosidase were investigated, their relative activities were 117%, 78%, 76%, 31%, and 22%, respectively. While Fe^{+3} increased the enzyme activity, Cu^{+2} inhibited the enzyme most strongly among the investigated substances. Cameron et al. found that FeCl_3 did not affect the purified β -glucosidase activity from orange, and they reported that the relative activity of 1 mM FeCl_3 was 100% (20). Fe^{+3} increased β -glucosidase

Comment [o37]: delete

Comment [o38]: delete

Comment [o39]: delete

Comment [o40]: delete

activity in olive fruits [21]. Yu et al. reported the relative activities of Cu^{+2} and Ag^+ with 5 mM concentration as 3% and 0%, respectively, on apple seed β -glucosidase [32]. Chen et al. reported that heavy metals with 1 mM concentration in the reaction medium of the β -glucosidase purified from plum seed had relative activities of 63.2%, 64.2%, and 0% for Cu^{+2} , Zn^{+2} , and Ag^+ respectively [35]. We determined that Zn^{+2} inhibited the enzyme, but Zn^{+2} metal with 1 mM concentration had a relative activity rate of 112.0% and activated the citrus β -glucosidase [20]. Different results have been reported in the literature on the effects of Zn^{+2} on β -glucosidases. Cu^{+2} inhibited mint β -glucosidase strongly in our study, and the inhibitory effect of Cu^{+2} on plant β -glucosidases activity has also been reported in studies such as vanilla bean and apple seed, and olive [17, 32, 34]. In the study investigating the effects of Ag^+ on the soybean β -glucosidase activity, the relative activity of 1 mM of AgNO_4 was 35%, while 10 mM of AgNO_4 had a relative activity of 0% [18]. The relative activities of Ag^+ were reported at 112% and 29%, at 0.1 mM and 1 mM, respectively, on vanilla β -glucosidase activity. We found that the relative activity of Ag^+ on mint β -glucosidase activity was 78% at 0.75 mM, similar to the vanilla β -glucosidase [17].

Comment [o41]: delete

Comment [o42]: delete

Comment [o43]: delete

Comment [o44]: write in full before abbreviation

Comment [o45]: delete

Comment [o46]: as

Comment [o47]: delete

Table 2. Effect of some heavy metal ions on purified β -glucosidase activity from mint (*Mentha piperita* L.)

Substance	[I] mM	% Relative Activity
Without inhibitor	0.00	100.0
Fe^{+3}	0.75	117
Cu^{+2}	0.75	22
Ag^{+2} ,	0.75	78
Pb^{+2}	0.75	76
Zn^{+2}	0.75	31

Effects of Inhibitors

The inhibition kinetic evaluation of the enzyme was performed by plotting the Lineavever-Burk graph. The p -NPG was a substrate, while glucose and δ -gluconolactone inhibitors were in this experiment. Fig. 6A shows the Lineavever-Burk graph plotted at 0.1mM and 0.2mM glucose concentrations, and Fig. 6.B shows the Lineaweaver-Burk graph drawn based on the δ -gluconolactone concentrations of 0.05 mM and 0.25mM. The mint β -glucosidase activity was inhibited both by glucose and by δ -gluconolactone with K_i values of $0.034 \pm 0.001 \text{mM}$ and $0.038 \pm 0.001 \text{mM}$, respectively. We found that competitive types of both glucose and δ -gluconolactone potentially inhibited β -glucosidase from peppermint.

Comment [o48]: check the name

Comment [o49]: place the word before inhibitors

Comment [o50]: check the name

Comment [o51]: delete

Comment [o52]: delete

Comment [o53]: rephrase

Comment [o54]: delete

We observed that glucose and δ -gluconolactone have strongly inhibited the β -glucosidase from the mint. Glucose competitively inhibited the mint β -glucosidase activity with a K_i value of $0.034 \pm 0.001 \text{ mM}$ (Fig. 6A) towards p -NPG as substrate.

Different studies have reported that some weakly inhibit the β -glucosidase activity of glucose [22, 29, 36], but some are potent enzyme inhibitors [20]. The inhibitor effect of glucose on β -glucosidases from various plants and microorganisms has been extensively studied since inhibition of beta-glucosidases by glucose is not desirable when enzymatic hydrolysis of cellulose is carried out as an industrial process. Glucose did not inhibit the β -glucosidase from rice, vanilla bean, and Arabidopsis at concentrations up to 2 M [17, 36, 37]. In contrast, glucose at lower concentrations effectively inhibited the enzyme from orange [20]. The δ -gluconolactone inhibited the mint β -glucosidase competitively with a K_i value of 0.038 ± 0.001 mM (Fig. 6B). The potent inhibitory effect of δ -gluconolactone agrees with the other studies that investigated the inhibition of β -glucosidases from plant sources [17, 21, 22]. The survey conducted on vanilla reported that δ -gluconolactone inhibited β -glucosidase competitively with a K_i value of 670 μ M. Our result agrees with the report by Odoux et al. [17].

Comment [o55]: some what?

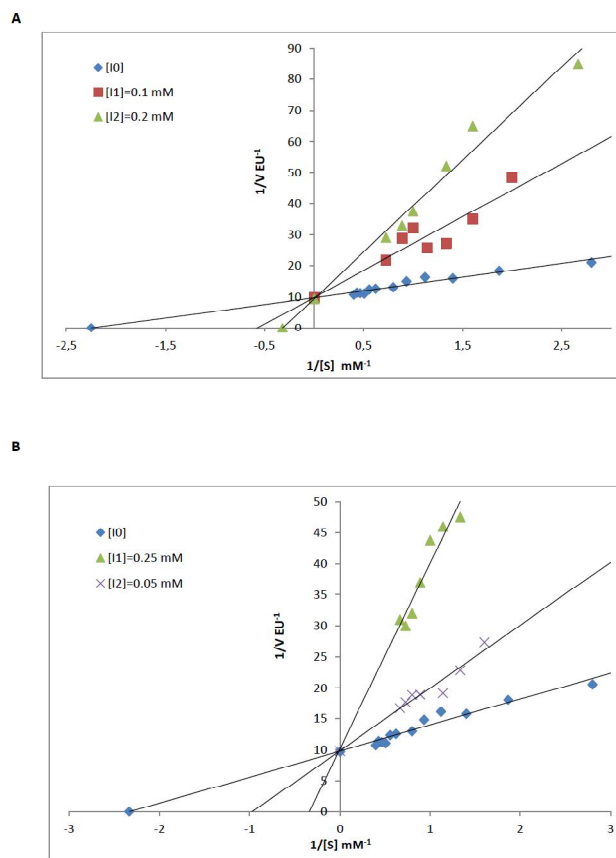


Fig. 6 Inhibition of the purified β -glucosidase from mint (*Mentha piperita* L.) by glucose and δ -gluconolactone. **A.** Lineweaver-Burk plot with various substrates (*p*-NPG) and as inhibitor glucose concentrations to determine the inhibition type and K_i value. **B.** Lineweaver-Burk plot with various substrates (*p*-NPG) and as inhibitor δ -gluconolactone concentrations to determine the inhibition type and K_i value.

Comment [o56]: delete

Comment [o57]: check the name

Comment [o58]: place after and (before as)

4. Conclusion

Soluble or immobilized forms of β -glucosidases isolated from microorganisms are used as exogenous enzymes in the feed and food industries [12]. In the food and feed manufacturing industry, microbial strains are used increasingly to produce additives, flavorings, and food enzymes. Modified strains are also frequently found among these microbial strains. For feed additives, both live strains and their additives, including DNA, must not be present in the last stage of the feed additive product. In addition, the food enzyme manufacturer must prove that the strain used for production or its DNA does not exist [38]. It will be safer to obtain enzymes used in food and feed processing from a source used as food rather than a microorganism.

Comment [o59]: May not be necessary. References are not cited in conclusion

Comment [o60]: Make this the last sentence

Comment [o61]: delete

Consequently, the β -glucosidase was purified from the mint in this study, and some of its biochemical properties were determined. Determination of the biochemical properties of this enzyme, a plant with commercial and pharmaceutical importance because of its phenolic content, will benefit advanced studies such as enzyme immobilization. Considering the usage of exogenous enzymes in wine and fruit juice production, we believe our results may be helpful in biotechnology and food biotechnology.

Compliance with Ethics Requirements

This article does not contain any studies with human or animal subjects.

References

1. Mahendran G, Rahman LU (2020) Ethnomedicinal, phytochemical and pharmacological updates on Peppermint (*Mentha x Piperita* L.)-A review. *Phytother Res* 34(9):2088-2139. doi: 10.1002/ptr.6664.
2. McKay DL, Blumberg JB (2006) A review of the bioactivity and potential health benefits of peppermint tea (*Mentha piperita* L.). *Phytother Res* 20(8):619-33. doi: 10.1002/ptr.1936.
3. Figueroa-Pérez MG, Rocha-Guzmán NE, Pérez-Ramírez IF, Mercado-Silva E, Reynoso-Camacho R (2014) Metabolite profile, antioxidant capacity, and inhibition of digestive enzymes in infusions of peppermint (*Mentha piperita*) grown under drought stress. *J Agric Food Chem* 62(49):12027-33. doi: 10.1021/jf503628c.
4. Inoue T, Sugimoto Y, Masuda H, Kamei C (2002) Antiallergic effect of flavonoid glycosides obtained from *Mentha piperita* L. *Biol Pharm Bull.* Feb;25(2):256-9. doi: 10.1248/bpb.25.256.
5. Sato A, Tamura H (2015) High antiallergic activity of 5,6,4'-trihydroxy-7,8,3'-trimethoxyflavone and 5,6-dihydroxy-7,8,3',4'-tetramethoxyflavone from eau de cologne mint (*Mentha piperita* L.). *Fitoterapia.* Apr;102:74-83. doi: 10.1016/j.fitote.2015.02.003. Epub 2015 Feb 20.

6. Guvenalp Z, Ozbek H, Karadayi M, Gulluce M, Kuruuzum-Uz A, Salih B, Demirezer O (2015) Two antigenotoxic chalcone glycosides from *Mentha longifolia* subsp. *longifolia*. *Pharm Biol.* Jun;53(6):888-96. doi: 10.3109/13880209.2014.948633. Epub 2014 Nov 28.
7. Berselli PV, Zava S, Montorfano G, Corsetto PA, Krzyzanowska J, Oleszek W, Berra B, Rizzo AM (2010) A mint purified extract protects human keratinocytes from short-term, chemically induced oxidative stress. *J Agric Food Chem.* Nov 10;58(21):11428-34. doi: 10.1021/jf1020285. Epub 2010 Oct 15.
8. Kozłowska M, Laudy AE, Przybył J, Ziarno M, Majewska E (2015) Chemical composition and antibacterial activity of some medicinal plants from lamiaceae family *Acta Pol Pharm* 72(4):757-67.
9. Verdoucq L, Morinière J, Bevan DR, Esen A, Vasella A, Henrissat B, Czjze M (2004) Structural determinants of substrate specificity in family 1 beta-glucosidases: novel insights from the crystal structure of sorghum dhurrinase-1, a plant beta-glucosidase with strict specificity, in complex with its natural substrate. *J Biol Chem.* 23;279(30):31796-803. doi: 10.1074/jbc.M402918200.
10. Esen A. *Beta-Glucosidases: Biochemistry and Molecular Biology*, (American Chemical Society, Hardcover February 27, 1993), pp 1-2
11. Cairns JRK, Esen A (2010) β -glucosidases *Cell Mol Life Sci* 67:3389-3405 DOI 10.1007/s00018-010-0399-2.
12. Wang XJ, Tao YS, Wu Y, An RY, Yue ZY (2017) Aroma compounds and characteristics of noble-rot wines of Chardonnay grapes artificially botrytized in the vineyard. *Food Chem.* 226:41-50. doi: 10.1016/j.foodchem.2017.01.007.
13. Voirin SG, Baumes RL, Sapis JC, Bayonove CL (1992) Analytical methods for monoterpene glycosides in grape and wine. II. Qualitative and quantitative determination of monoterpene glycosides in grape. *J Chromatogr* 20;595(1-2):269-81. doi: 10.1016/0021-9673(92)85169-t.
14. Carrau F, Henschke PA (2021) *Hanseniaspora vineae* and the concept of friendly yeasts to increase autochthonous wine flavor diversity *Front Microbiol* 12:702093. doi: 10.3389/fmicb.2021.702093.
15. Li YY, Jiang CJ, Wan XC, Zhang ZZ, Li DX (2005) Purification and partial characterization of beta-glucosidase from fresh leaves of tea plants (*Camellia sinensis* (L.) O. Kuntze). *Acta Biochim Biophys Sin (Shanghai)* 37(6):363-70. doi: 10.1111/j.1745-7270.2005.00053.x.
16. Sener A (2015) Extraction, partial purification and determination of some biochemical properties of β -glucosidase from Tea Leaves (*Camellia sinensis* L.). *J Food Sci Technol* 52(12):8322-8. doi: 10.1007/s13197-015-1915-z.
17. Odoux E, Chauwin A, Brillouet JM (2003) Purification and characterization of vanilla bean (*Vanilla planifolia* Andrews) beta-D-glucosidase. *J Agric Food Chem* 7;51(10):3168-73. doi: 10.1021/jf0260388.
18. Hsieh MC, Graham TL (2001) Partial purification and characterization of a soybean beta-glucosidase with high specific activity towards isoflavone conjugates. *Phytochemistry.* Dec;58(7):995-1005. doi: 10.1016/s0031-9422(01)00380-6.

19. Mateos SE, Cervantes CA, Zenteno E, Slomianny MC, Alpuche J, Hernández-Cruz P, Martínez-Cruz R, del Socorro Pina Canseco M, Pérez-Campos E, Rubio MS, Mayoral LP, Martínez-Cruz M (2015) Purification and Partial Characterization of β -Glucosidase in Chayote (*Sechium edule*). *Molecules*. 23;20(10):19372-92. doi: 10.3390/molecules201019372. PMID: 26512637; PMCID: PMC6332095.
20. Cameron RG, Manthey JA, Baker RA, Grohmann K (2001) Purification and characterization of a beta-glucosidase from *Citrus sinensis* var. Valencia fruit tissue. *J Agric Food Chem. Sep*;49(9):4457-62. doi: 10.1021/jf010010z.
21. Kara HE, Sinan S, Turan Y (2011) Purification of beta-glucosidase from olive (*Olea europaea* L.) fruit tissue with specifically designed hydrophobic interaction chromatography and characterization of the purified enzyme. *J Chromatogr B Analyt Technol Biomed Life Sci*. 879(19):1507-12. doi: 10.1016/j.jchromb.2011.03.036.
22. Ašić A, Bešić L, Muhović I, Dogan S, Turan Y (2015) Purification and Characterization of β -Glucosidase from *Agaricus bisporus* (White Button Mushroom). *Protein J. Dec*;34(6):453-61. doi: 10.1007/s10930-015-9640-z.
23. Chen T, Yang W, Guo Y, Yuan R, Xu L, Yan Y (2014) Enhancing catalytic performance of β -glucosidase via immobilization on metal ions chelated magnetic nanoparticles. *Enzyme Microb Technol* 63:50-7. doi: 10.1016/j.enzmictec.2014.05.008.
24. Celik A, Dinçer A, Aydemir T (2016) Characterization of β -glucosidase immobilized on chitosan-multiwalled carbon nanotubes (MWCNTS) and their application on tea extracts for aroma enhancement. *Int J Biol Macromol* 89:406-14. doi: 10.1016/j.ijbiomac.2016.05.008.
25. Yang X, Ma Y, Li L (2019) β -Glucosidase from Tartary buckwheat immobilization on biofunctionalized nano-magnetic iron oxide and its application in tea soup for aroma and flavonoid aglycone enhancement. *Food Funct* 10(9):5461-5472. doi: 10.1039/c9fo00283a.
26. Zhang T, Fang K, Ni H, Li T, Li LJ, Li QB, Chen F (2020) Aroma enhancement of instant green tea infusion using β -glucosidase and β -xylosidase. *Food Chem* 15;315:126287. doi: 10.1016/j.foodchem.2020.126287.
27. Lowry OH, Rosebrough NJ, Farr AL, Randall RJ (1951) Protein measurement with the folin phenol reagent, *Journal of Biological Chemistry* Volume 193:265-275, ISSN 0021-9258, doi: 10.1016/S0021-9258(19)52451-6.
28. Laemmli UK (1970) Cleavage of structural proteins during the assembly of the head of bacteriophage T4. *Nature* 227(5259):680-5. doi: 10.1038/227680a0.
29. Gerardi C, Blando F, Santino A (2012) Purification and chemical characterization of a cell wall-associated β -galactosidase from mature sweet cherry (*Prunus avium* L.) fruit. *Plant Physiol Biochem* 61:123-30. doi: 10.1016/j.plaphy.2012.09.012.
30. Kara HE, Turan Y, Er A, Acar M, Tümay S and Sinan S (2014) Purification and characterization of β -glucosidase from greater wax moth *Galleria mellonella* L. (Lepidoptera: Pyralidae). *Arch Insect Biochem Physiol* 86: 209-219. <https://doi.org/10.1002/arch.21171>
31. Ünal MÜ, Aksoy VA, Şener A (2014) Isolation, purification and determination of some biochemical properties of β -glucosidase from Muscat of Bornova grape *Eur Food Res Technol* 238:9–15 DOI 10.1007/s00217-013-2072-0.

32. Yu HL, Xu JH, Lu Wy, Lin GQ (2007) Identification, purification and characterization of β -glucosidase from apple seed as a novel catalyst for synthesis of O-glucosides Enzyme and Microbial Technology 40 354–361 doi:10.1016/j.enzymictec.2006.05.004.
33. Takahashi H, Kikuchi-Fujisaki S, Yoshida C, Yamada H, Yamashita T, Konno N, Takeda T (2018) Gtgen3A, a novel plant GH3 β -glucosidase, modulates gentio-oligosaccharide metabolism in *Gentiana*. Biochem J. 16;475(7):1309-1322. doi: 10.1042/BCJ20170866. PMID: 29581147.
34. Romero-Segura C, Sanz C, Perez AG (2009) Purification and characterization of an olive fruit beta-glucosidase involved in the biosynthesis of virgin olive oil phenolics J Agric Food Chem 57(17):7983-8. doi: 10.1021/jf901293c. PMID: 19689134.
35. Chen L, Li N, Zong MH (2012) A glucose-tolerant β -glucosidase from *Prunus domestica* seeds: Purification and characterization. Process Biochemistry 47:127–132 doi:10.1016/j.procbio.2011.10.023.
36. Turan Y (2008) A pseudo-beta-glucosidase in *Arabidopsis thaliana*: correction by site-directed mutagenesis, heterologous expression, purification, and characterization Biochemistry (Mosc). 73(8):912-9. doi: 10.1134/s0006297908080099.
37. Opassiri R, Cairns KJR, Akiyama T, Aswapati WO, Svasti J, Esen A (2003) Characterization of a rice β -glucosidase highly expressed in flower and germinating shoot. Plant Science 165 (3):627- 638
38. Deckers M, Deforce D, Fraiture MA, Roosens NHC (2020) Genetically Modified Micro-Organisms for Industrial Food Enzyme Production: An Overview. Foods. 9(3):326. doi: 10.3390/foods9030326.

Figure Captions

Fig. 1 Purification of mint (*Mentha piperita* L.) β -glucosidase by hydrophobic interaction chromatography. The enzyme activity and total protein amount collected all eluents in the chromatography stage. Graphs were created by processing the activity and protein amount data corresponding to the number of tubes collected. The decreasing Ammonium sulfate gradient was applied as 1.0-0 M and shown as a straight line in the graph.

Fig. 2 SDS-PAGE image of the purified β -glucosidase from mint (*Mentha piperita* L.) Lane 1: Protein molecular weight marker Lane 1: molecular weight standards (β -galactosidase, 116 kDa; bovine serum albumin, 66.2 kDa; egg albumin, 45 kDa; lactate dehydrogenase, 35 kDa; Rease Bsp981 (E. coli), 25 kDa; β -lactoglobulin, 18.4 kDa; lysozyme, 14.4 kDa); lane 2: purified β -glucosidase.

Fig. 3 Effect of temperature on purified β -glucosidase from mint (*Mentha piperita* L.)

Fig. 4 Effect of pH on purified β -glucosidase from mint (*Mentha piperita* L.)

Fig. 5 Kinetic parameters of *p*-NPG and *o*-NPG substrate Lineweaver-Burk plots A. Graph when using *p*-NPG as substrate B. Graph when using *o*-NPG as substrate

Fig. 6 Inhibition of the purified β -glucosidase from mint (*Mentha piperita* L.) by glucose and δ -gluconolactone A. Lineaveawer-Burk plot with various substrates (*p*-NPG) and as inhibitor glucose concentrations to determine the inhibition type and K_i value B. Lineaveawer-Burk plot with various substrates (*p*-NPG) and as inhibitor δ -gluconolactone concentrations to determine the inhibition type and K_i value

Table Captions

Table 1. Purification steps of mint (*Mentha piperita* L.) β -glucosidase

Table 2. Effect of some heavy metal ions on purified β -glucosidase activity from mint (*Mentha piperita* L.)