

Original Research Article

Potential secondary metabolites of *Streptomyces* sp. and *Trichoderma* sp. in suppressing the ~~percentage-percentage~~ of *Spodoptera litura* attacks on corn plants

ABSTRACT

Spodoptera litura F. (Lepidoptera: Noctuidae) is one of the main pests on corn which is polyphagous and can cause crop failure due to damage to the leaves of the plant. Secondary metabolite compounds produced by microorganisms have many roles and functions, namely as compounds to protect plants from pest attacks. *Streptomyces* sp. and *Trichoderma* sp. are biological control agents which have the potential to produce chitinase enzymes capable of degrading the cell walls of larval and pupal stages. This study aims to determine the potential of secondary metabolites of *Streptomyces* sp. and *Trichoderma* sp. on various production media on the percentage of *S. litura* ~~larvae-larval~~ attack on corn plants. The study was conducted using a completely randomized factorial design with the first factor ~~were-being~~ the types and combination of biological control agents used, namely *Streptomyces* sp. and *Trichoderma* sp. While the second factor is the type of propagation media used i.e., glucose nitrate (GN) and potato dextrose agar (PDA). The results showed that the combination of *Streptomyces* sp. and *Trichoderma* sp. on PDA production media with a concentration ratio of 5:1 can increase the potential of secondary metabolites in suppressing the percentage of *S. litura* ~~larvae-larval~~ attack on corn plants by up to 10%.

Keywords: ~~P~~production media, mortality, larvae

Formatted: Font: Italic

INTRODUCTION

Spodoptera litura F. (Lepidoptera: Noctuidae) is one of the main pests of maize, a polyphagous pest, and can cause crop failure due to damage to the leaves and ~~fruit-cobs~~ of the plant (Eppo, 2016). Symptoms of *S. litura* attack are similar to the symptoms of a grasshopper attack. ~~*Spodoptera-*~~ *litura* begins to eat the edges of the leaves to the ~~bones~~ midrib of the leaves (Fitriani and Gassa, 2011). Attacks on young plants can inhibit plant growth and even kill plants. Larvae appear on the plants after 11-30 days after planting. If pest control efforts are not carried out properly, farmers will experience considerable losses. ~~*Spodoptera-*~~ *litura* attack caused 12.5% and more than 20% damage to plants aged more than 20 days after planting tanam (Trizelia, *et. al.*, 2011).

Formatted: Font: Italic

Formatted: Font: Italic

Formatted: Font: Italic

Formatted: Highlight

Formatted: Font: Italic

Control of using chemical pesticides in excess which is often used by farmers carries several risks. The active ingredients contained in pesticides can lead to the possibility of water and soil contamination (Arif, 2015). Currently, biological control is being developed using secondary metabolites from biological agents. Secondary metabolites have beneficial

and appropriate properties when applied in various ways. The properties of secondary metabolites according to (Soesanto, (2015) include; being easily soluble in water, so that it can blend with water and does not require a grader or adhesive, ~~does~~ not leave residues in plant tissues, so that agricultural products are safe against residual hazards, are not volatile, make *biological control agent* secondary metabolites durable in nature, a large amount of secondary metabolites it takes only a small amount, but provides great benefits and is easy to apply in a variety of ways and conditions.

Streptomyces spp. is one of the important microbes that can provide potential new bioactive compounds to be used as biological agents to control insect pests (Oka, *et al.*, 2000). Several active extracts from metabolites of the *Streptomyces* genus, such as avermectin, emamectin, polynactins, milbemycin, and spinosad, have been established as potential protective agents against various insect pests (Copping dan Menn, 2000).

The fungus *Trichoderma* sp. has enzymes contained in secondary metabolites including protease, cellulase, cellobiase, chitinase, and 1,3- β -glucanase (Soesanto, 2015). *Streptomyces* sp. and *Trichoderma* sp. also produce the enzyme chitinase which can degrade the cell wall of pests in the larval and pupal stages. In addition to antibiotics, other bioactive metabolites are produced by *Streptomyces* sp., including volatile organic compounds (VOCs) and enzymes that degrade cell walls, such as chitinases (Hooster, Schmitz, and Daniele *et al.*, 2005). *Actinomycetes* sp. as a biological agent.

The media has an important role ~~for in~~ the production of secondary metabolites, the right composition of the media can increase the amount of enzymes and compounds in secondary metabolites. Based on research (Valanarasu, *et al.*, 2010) the production of secondary metabolites of *Streptomyces* spp. ERI04 was at its maximum level when grown on media with a high amount of glucose as the sole carbon source. The combination of *Streptomyces* sp. and *Trichoderma* sp. on potato dextrose agar (PDA) production media and a concentration ratio of 5:1 can increase the cytotoxicity of secondary metabolites against *Spodoptera litura* larvae *in vitro* (Fitriana, *et al.* 2020). This study aims to determine the potential of secondary metabolites of *Streptomyces* sp. and *Trichoderma* sp. produced on PDA and GN media on the percentage of *Spodoptera litura* larvae larval attack on corn plants and types of secondary metabolites that can affect the mortality of *S. podoptera litura* larvae.

MATERIALS AND METHODS

This research ~~will be was~~ carried out in 2019 at the Plant Health Laboratory, and the experimental garden screen house of the Faculty of Agriculture, UPN "Veteran" East Java.

Preparation of Corn Plants

The corn seed used was Bonanza F₁ variety of corn. The seeds were planted in polybags measuring 15 kg with a media ratio of soil: compost (3: 1), then polybags were arranged with a distance between treatments of 35 cm.

Formatted: Font: Italic

Formatted: Font: Italic

Formatted: Font: Italic

Formatted: Font: Italic

Formatted: Font: Italic

Formatted: Font: Italic

Formatted: Font: Italic

Formatted: Font: Italic

Formatted: Font: Italic

Formatted: Font: Italic, Highlight

Formatted: Highlight

Formatted: Highlight

Formatted: Font: Italic

Formatted: Font: Italic

Formatted: Font: Italic

Formatted: Font: Italic

Formatted: Font: Italic

Formatted: Font: Italic

Formatted: Font: Italic

Formatted: Font: Italic

Formatted: Font: Italic

Formatted: Font: Italic

Formatted: Subscript

Preparation of Bioagent Isolate

The isolates of *Streptomyces* sp. and *Trichoderma* sp. used in this study ~~were isolates belonging~~ belonged to Dr. Ir. Penta Suryaminarsih, MP. whose effectiveness is known against larval pests of *S. litura*. *Streptomyces* sp. isolates rejuvenated on glucose sodium agar media (glucose 1gr/L, KH_2PO_4 1.75 gr/L, NaNO_3 0.85 gr/L, KCl 0.75 gr/L, $\text{MgSO}_4 \cdot 7\text{H}_2\text{O}$ 2.5 gr/L, agar, and distilled water; 30°C) (Hong, 2009) ~~was~~ were incubated for 14 days and *Trichoderma* sp. rejuvenated on Potato Dextrose Agar medium (PDA 39 g/L; 28°C) (Harni *et al.*, 2017) incubated for 7 days.

Propagation in Liquid Medium

Streptomyces sp. and *Trichoderma* sp. isolates were inoculated in 150 ml of liquid media with a combination of sugar potato extract and glucose sodium. The treatment series used were the 1st Erlenmeyer which was inoculated with 6 pieces of agar containing a single isolate of *Streptomyces* sp. (± 8 mm in diameter), the 2nd Erlenmeyer was inoculated with 6 pieces of agar containing a single isolate of *Trichoderma* sp. (± 8 mm in diameter), and the 3rd, 4th and 5th erlenmeyer were inoculated with a combination (co-culture) of a single isolate of *Streptomyces* sp. and *Trichoderma* sp. in a ratio of 3 : 3, 4 : 2 and 5 : 1. All cultures were incubated for 7 days using an orbital shaker ($25^\circ\text{C} - 28^\circ\text{C}$; 160 rpm).

Extraction of *Streptomyces* Sp. And *Trichoderma* Sp. Secondary Metabolites

Secondary metabolite extraction was carried out by separating the secondary metabolites of *Trichoderma* sp. And *Streptomyces* sp. From the media and cells of *Trichoderma* sp. And *Streptomyces* sp. At a speed of 4,000 rpm for 15 minutes (Harni *et al.*, 2017). Then filtered using ~~whatman~~ Whatman paper number 1- to get more sterile results, the supernatant was filtered again using a 0.2 m syringe filter. To get more sterile results, the supernatant was filtered again using a 0.2 μm syringe filter.

Secondary Metabolite Chitinolytic Index

The chitinase test was carried out using the disc diffusion method. Whatman filter paper number 1 (± 8 mm diameter) which had been previously dipped with secondary metabolites of each treatment and then incubated for 48-72 hours. ~~Chitinolytic~~ The chitinolytic index is the ratio between the clear zone and colony diameter to obtain potential isolates. The chitinolytic index formula is as follows (according to Suryadi *et al.*, 2013 in: Nafisah *et al.*, 2017).

CI = Clear Zone D./Colony D.

Where,

CI : Chitinolytic index

Clear Zone D. : Clear Zone Diameter

Formatted: Font: Italic

Formatted: Font: Italic

Formatted: Font: Italic

Formatted: Font: Italic

Formatted: Subscript

Formatted: Subscript

Formatted: Subscript

Formatted: Subscript

Formatted: Subscript

Formatted: Font: Italic

Formatted: Font: Italic

Formatted: Font: Italic

Formatted: Font: Italic

Formatted: Superscript

Formatted: Font: Italic

Formatted: Superscript

Formatted: Font: Italic

Formatted: Superscript

Formatted: Superscript

Formatted: Superscript

Formatted: Font: Italic

Formatted: Font: Italic

Formatted: English (India)

Formatted: Font: Italic

Formatted: Font: Italic

Formatted: Font: Italic

Formatted: Font: Italic

Formatted: Font: Italic

Formatted: Font: Italic

Formatted: Font: Italic

Formatted: Font: Italic

Colony D. : Colony Diameter

~~Symtoms~~Symptoms of *S. litura* Mortality

Observations were made by observing the symptoms of mortality and counting the number of *S. podoptera litura* mortality for approximately 3 x 24 hours. The population in this study was *S. podoptera litura* from BALITAS Karang Ploso Malang. The sample of this study was 300 *S. podoptera litura* in instar III.

Percentage of *Spodoptera litura* ~~Larvae~~Larval Attack on Corn Plants

The secondary metabolite test was carried out *in vivo* on corn plants in the experimental field of the Faculty of Agriculture, UPN "Veteran" East Java. Corn plants were prepared until the age of 50 days after planting (DAP), then 3rd-instar larvae of *S. litura* were inoculated on corn plants as many as 5 individuals per plant. Secondary metabolite spraying was carried out 2 days after the plant (his) on the leaves of the corn plant according to the treatment. Observations on the development of *S. litura* and symptoms of plant damage were observed until the corn plants were 85 DAP. The formula for calculating the percentage of pest attacks is as follows:

$$P = \frac{A}{B} \times 100\%$$

P : Percentage of pest attack

A : Number of affected plants

B : Number of observed plants (Direktorat Bina Perlindungan Tanaman 1992 dalam Pratama, *et al.*, 2015)

Formatted: Font: Italic

Formatted: Superscript

Comment [R2]: Not in Reference

Formatted: Highlight

DATA ANALYSIS

Potential secondary metabolites of *Trichoderma* sp. and *Streptomyces* sp. which were grown on different production media with different combinations were analyzed based on the content of secondary metabolites, larval mortality symptoms and the percentage of *S. litura* ~~larvae~~larval attack on corn plants descriptively and using analysis of variance test.

RESULTS

Secondary Metabolite Chitinolytic Index

The results of the chitinolytic test on chitin agar media showed the difference between the 5:1 EKGST formula which had the highest chitinolytic index value was 3, while the 5:1 GNST formula with the lowest chitinolytic index value was 0.3 with a clear zone that appeared around the filter paper on 5:1 EKGST formula (Figure 1) (Table 1).

The isolates of *Sterptomyces* sp. and *Trichoderma* sp. with a concentration ratio of 3:3 had the highest chitinolytic index value of 6.15 while the concentration ratio of 4:2 had the lowest chitinolytic index value of 1.50. The interaction of media and concentration showed

Comment [R3]: Expand Once

Formatted: Highlight

Comment [R4]: Not in Table 1

Formatted: Highlight

that the 5:1 EKGST had the highest chitinolytic index of 3.00 while the 4:2 EKGST had the lowest chitinolytic index of 0 (Table 1).

Symptoms of *S. litura* larvae Mortality

The dead *S. litura* larvae in the 5:1 EKGST formula showed a characteristic shrinking body with a size of ± 8 mm, blackened, and released fluid. *S. litura* larvae without secondary metabolites have a body length of ± 10 mm with a proportional shape, body color and pattern are clearly visible, and the larvae are actively moving (Figure 1).

Percentage of *S. litura* Attacks on Corn Plants

The application of secondary metabolites of *Streptomyces* sp. and *Trichoderma* sp. with various combinations of treatments on *Spodoptera litura* of maize pests has not shown a significant effect between treatments on the percentage of pest attacks. The combination formula of *Streptomyces* sp. and *Trichoderma* sp. isolates on PDA media with a concentration ratio of 5:1 was able to control the most effective pest attack with an attack percentage of 10% on the 7th day compared to the combination formula of *Trichoderma* sp. isolates on GN media where the attack percentage was 68% (Figure 2).

Formatted: Superscript

Formatted: Font: Italic

DISCUSSION

Secondary Metabolite Chitinolytic Index

The chitinolytic index value which is included in the high category has a value of more than two (> 2). If it has a value of less than two (< 2) then it is classified as a low category (Setia and Saharjono, 2015). This indicates that the activity of the chitinase enzyme in the 5:1 EKGST formula is high. Meanwhile, the lowest index value was found in the 4:2 EKGST formula. The formation of a clear zone in the media according to Wibowo (2017) is caused by the homogeneous cleavage of $\beta 1, 4$ *N-acetylglucosamine homopolymer* in the chitin contained in the media into *N-acetylglucosamine monomer* so that the iodine solution cannot bind $\beta 1, 4$ *N-acetylglucosamine homopolymer* and then zone clear formed. Chitinolytic index indicates the activity of the chitinase enzyme produced by the test microorganisms.

According to (Mujoko, *et al.*, (2014), secondary metabolites not only contain antibiotics, but can also be in the form of extracellular enzymes, namely chitinase and cellulase. Based on research (Valan Arasu *et al.*, 2009) the production of secondary metabolites was at its maximum level when cultured on media with a high amount of glucose as the sole carbon source. In the combination formula of *Streptomyces* sp. and *Trichoderma* sp. isolates on PDA media with a concentration ratio of 5:1 the carbon source was obtained from potato extract and glucose in larger amounts when compared to GN media where the carbon source only came from glucose.

Symptoms of *S. litura* larvae Mortality

Symptoms of larval mortality are characterized by a shrinking body, blackening, and releasing fluid. This is because the chitin of *S. litura* larvae is degraded by the chitinase enzyme during contact application and enters the digestive system through feed that has been sprayed with formula which can cause the death of *S. litura* larvae. Chitinase enzyme causes the body of *S. litura* larvae to become soft, shrink, and blacken (Krishanti *et al.*, 2017a). According to Singh *et al.* (2014), the chitinase enzyme causes tissue damage such as the digestive tract, body muscles, nervous system, and respiration and causes the death of larvae. The chitinase enzyme enters the larval body and degrades the peritrophic membrane, this causes damage to the epithelial cells so that the toxin compounds attached to the insect digestive system ~~resulting~~ results in cytoplasmic leakage and death of the larvae (Schünemann *et al.*, 2014).

Formatted: Font: Italic

Formatted: Font: Italic

Percentage of *Spodoptera litura* Larvae Attack on Corn Plants

The application of spraying secondary metabolites produced by the combination of *Streptomyces* sp. and *Trichoderma* sp. can be used as an insecticidal agent which is stomach poison to control the population of *S. litura* larvae. Research by Kaur *et al.* (2014) showed that administration of secondary metabolites *Streptomyces hydrogenans* with a high concentration of 1,600 µg/ml was significantly effective on larval mortality of 70%. Secondary metabolites of *Streptomyces* sp. AP-123 showed high larvicidal activity against *Helicoverpa armigera* (63.11%) and *Spodoptera litura* (58.22%) (Arasu *et al.*, 2013).

Formatted: Font: Italic

Formatted: Font: Italic

Insect control can be effective by optimizing the administration of chitinase enzymes from either single isolates or combinations (Subbanna *et al.*, 2018). In addition to chitinase, the combination of *Streptomyces* sp. and *Trichoderma* sp. isolates was able to produce toxins such as emamectin. Emamectin is very effective in killing *Helicoverpa armigera* and *Spodoptera litura* in a short time (Ishaaya, *et al.*, 2002). *Streptomyces* sp. produces secondary metabolites of chitinase which can control fruit flies and pupae up to 100% *in vitro* (Safri and Wiwik Sri Harijani, 2016). This indicates that the secondary metabolites produced by *Streptomyces* sp. and *Trichoderma* sp. can be used for pest control. Arasu *et al.* (2013) also found that *Streptomyces* sp AP-123 showed significant antifeedant, larvicidal activity against polyphagous pests.

Formatted: Font: Italic

Formatted: Font: Italic

Formatted: Font: Italic

Chemical analysis revealed that *T. atroviride* produces secondary metabolites of volatile antifeedants 1-octen-3-ol and 6-pentyl-2H-pyran-2-one, which can reduce leaf tissue consumption and change the diet of *S. frugiperda* (Contreras-Cornejo *et al.*, 2018).

Formatted: Font: Italic

CONCLUSION

Secondary metabolites of the combination *Streptomyces* sp. and *Trichoderma* sp. produced on PDA media containing high chitinolytic enzyme 2, can cause the death of *Spodoptera litura* larvae with symptoms of a shrinking body, blackening and releasing fluid. The secondary metabolite combination of *Streptomyces* sp. and *Trichoderma* sp. potential as

Formatted: Font: Italic

Formatted: Font: Italic

Formatted: Font: Italic

Formatted: Font: Italic

Formatted: Font: Italic

larvicida and antifeedant that can reduce the percentage of *S. podoptera litura* larvae attack up to 10% on corn plants.

Formatted: Font: Italic

REFERENCE

Arasu, Mariadhas M., Valan, Naif Abdullah Al-Dhabi, N.A., Valsalam Saritha, V., Veeramuthu Duraipandiyar, V., Chinnasamy Mut-Hukumar, C. and Sun Ju Kim, S. J., 2013. "Antifeedant, larvicidal and growth inhibitory bioactivities of novel polyketide metabolite isolated from *Streptomyces* sp. AP-123 against *Helicoverpa armigera* and *Spodoptera litura*." BMC Microbiology 13(1): 1-6.

Formatted: Font: Italic

Formatted: Font: Italic

Formatted: Font: Italic

Arif, Adiba. 2015. "The Effect of chemicals on the use of environmental pesticides." Jf Fik Uinam 3(4): 134-143.

Contreras-Cornejo, H., Exon A., Angel, Lourdes-Macías-Rodríguez, L., Ek-del-Val, E. and John Larsen, J. 2018. "The Root Endophytic Fungus *Trichoderma atroviride* Induces Foliar Herbivory Resistance in Maize Plants." Applied Soil Ecology 124(April):45-53.

Dicky Dharmawan, Penta Suryaminarsih and Wiwik Sri Harijani. 2018. "Effectiveness of *Streptomyces* sp. and *Trichoderma* sp. as an entomopathogen against rhinoceros beetle larva (*Oryctes rhinoceros* L)." Plumules pp. 1-9.

Formatted: Font: Italic

Formatted: Font: Italic

PM, E. 2015, eppo. 2016. "PM 7/124 (1) *Spodoptera littoralis*, *Spodoptera litura*, *Spodoptera frugiperda*, *Spodoptera eridania*." EPPO Bulletin, 45: 410-44.

Formatted: Font: Italic

Formatted: Font: Italic

Formatted: Font: Italic

Formatted: Font: Italic

Fitriani, U. L., and D. A. N. Ahdin Melina and Gassa, D. A. 2011. "Predatory capability of *Euborellia annulata* (Dermoptera: Anisolabididae) and its preference to different instars of *Spodoptera litura*." The Predation of *Euborellia annulata* (Dermoptera: Anisolabididae) and its preference in various larval instars of *Spodoptera litura*." Phytomedicine 7(3): 182 - 185.

Formatted: Font: Italic

Formatted: Font: Italic

Formatted: Font: Bold

Formatted: Font: (Default) Times New Roman, 12 pt

Fitriana, Ika Nur, Penta Suryaminarsih, Wanti Mindari, and Sri Wiyatiningsih. 2020. "Multiantagonist growth study of *Trichoderma* sp. and *Streptomyces* sp. in root suspension, liquid humate and sugar potato extract." Agrotechnology Scientific Periodic - Plumula 7(1):25-32.

Formatted: Font: (Default) Times New Roman, 12 pt, Italic

Formatted: Font: (Default) Times New Roman, 12 pt

Formatted: Font: Italic

Formatted: Font: Italic

Harijani, Wiwik Sri and Penta Suryaminarsih. 2014. "Effect of several isolates of biological agents *Actinomycetes* spp. against insect morphology *Bactrocera* sp." pp. 114-17 in Research Month V.

Formatted: Font: Italic

Formatted: Font: Italic

Formatted: Font: Italic

Formatted: Font: Italic

Formatted: Font: Italic

Harni, Rita, Widi Amaria, Herliyati Mahsunah, Research Institute, Industrial Plants, Highway, Pakuwon Km, Sukabumi Indonesia, Center for Biotechnology, Research Agency, Puspitek Area, Serpong Gedung, and South Tangerang Indonesia. 2017. "Potential of secondary metabolites of *Trichoderma* spp. to control vascular streak dieback (Vsd) disease in potential cocoa seeds of *Trichoderma* spp. secondary metabolite in controlling vascular streak dieback (Vsd) on cacao seedlings." Industrial Plants And Refreshments 4(August 2016):57-66.

Formatted: Font: Italic

Formatted: Font: Italic

Hooster, ~~Frank, Jessica E.~~ Schmitz, ~~J. E.~~ and ~~Rolf Daniel, R.~~ 2005. "Enrichment of chitinolytic microorganisms: Isolation and characterization of a chitinase exhibiting antifungal activity against phytopathogenic fungi from a novel *Streptomyces* Strain." *Applied Microbiology and Biotechnology*, 66(4): 434-442.

Formatted: Font: Italic

Ishaaya, ~~I. saae, Svetlana~~ Kontsedalov, ~~S.~~ and ~~A. Rami~~ Horowitz ~~A. R.~~. 2002. "Emamectin, a novel insecticide for controlling field crop pests." *Pest Management Science*, 58(11):1091–1095.

Kaur, ~~T.alwinder, Arti~~ Vasudev, ~~A., Satwinder Kaur~~ Sohal, ~~S. K.~~ and ~~Rajesh Kumari~~ Manhas, ~~R. K.~~ 2014. "Insecticidal and growth inhibitory potential of *Streptomyces hydrogenans* DH16 on major pest of India, *Spodoptera litura* (Fab.) (Lepidoptera: Noctuidae)." *BMC Microbiology* 14(1):1–9.

Formatted: Font: Italic

Formatted: Font: Italic

Mujoko, ~~Tri T., and Ika Roehdjatun~~ Sastrahidayat, ~~I. R.~~ and ~~Tutung~~ Hadiastono, ~~T.~~ and ~~Syamsuddin~~ Djauhari, ~~S.~~ 2014. "Antagonistic effect of *Streptomyces* spp. on spore germination and mycelial growth of *Fusarium oxysporum* f.Ssp. *Lycopersici*." *International Journal of Biosciences (IJBS)* 5(9):414–22.

Formatted: Font: Italic

Formatted: Font: Italic

Formatted: Font: Italic

Nafisah, Hidayatun, Sri Pujiyanto, and Budi Raharjo. 2017. "Isolation and testing of chitinase activity of bacterial isolates from dieng geothermal area." *Biome: Biological Scientific Periodic* 19(1):22.

~~Zulfiana, D., Krishanti, N. P. R. A., Wikantyo, B., & Zulfetri, A. Ni Putu Ratna Ayu Krishanti, Bramantyo Wikantyo, Apriwi Zulfetri, and Deni Zulfiana.~~ 2017. "Entomopathogenic bacteria as biocontrol agent against *Spodoptera litura* (F.) larvae." *Entomopathogenic bacteria as biocontrol agent against *Spodoptera litura* (F.) Larvae.*" *Biology News* 16(1):13–21.

Formatted: Font: Italic

Formatted: Font: Italic

Pratama, Sigit Addy, Ames B. Kaligis, and Jimmy Rimbing. 2015. "Population and Percentage of Stem Borer Pests (*Ostrinia furnacalis* Guenee) on Sweet Corn (*Zea mays* L. saccharata ~~sturtSturt~~) in North Tomohon District, Tomohon City." *Cocos* 6.

Safri, Muchamad and Penta Suryaminarsih Wiwik Sri Harijani. 2016. "Test of pupa viability of fruit flies (*Bactrocera* sp.) to imago by giving *Streptomyces* sp. biological agent." *Journal Name ????* 5(1):39–49.

Formatted: Font: Italic

Formatted: Highlight

Schünemann, ~~R.ogério, Neiva~~ Knaak, ~~N.~~ and ~~Lidia Mariana~~ Fiuza, ~~L. M.~~ . 2014. "Mode of action and specificity of *Bacillus thuringiensis* toxins in the control of caterpillars and stink bugs in soybean culture." *ISRN Microbiology* 2014(February):1–12 <http://dx.doi.org/10.1155/2014/135675>.

Formatted: Font: Italic

Formatted: Font: (Default) Times New Roman, 12 pt

Formatted: English (India)

Singh, ~~G.ursharan, Aditya~~ Bhalla, ~~A., Jasvinder Singh~~ Bhatti, ~~J. S.~~ and ~~Sanjeev~~ Chandel, ~~S., Rajput, A. Abdullah, W. Andrabi, and P. Kaur.~~ 2014. "Potential of chitinases as a biopesticide against agriculturally harmful fungi and insects." *Journal Of of Microbiology aAnd Biotechnology* 3(1):27–32.

Soesanto, Loekas. 2015. *Secondary Metabolites of Biological Control Agencies: A New Breakthrough in Control of Plantation Plant Pest Organisms.* Purwokerto.

Subbanna, A. R. N. S., ~~H.~~Rajasekhara, ~~H.~~ J. Stanley, ~~J.~~, ~~K.~~ Mishra, ~~K.~~ K., and ~~A.~~ Pattanayak, ~~A.~~ 2018. "Pesticidal prospectives of chitinolytic bacteria in agricultural pest management." *Soil Biology and Biochemistry* 116:52–66.

~~Trizelia, M~~

LIST OF TABLES

Table 1. The mean chinolytic index of secondary metabolites of the Microorganisms *Streptomyces* sp. and *Trichoderma* sp.

Media Treatment	APH Microorganisms	Average	Notation
PDA	<i>Streptomyces</i> sp., <i>Trichoderma</i> sp. 4:2	0.00	a
GN	<i>Streptomyces</i> sp.	0.00	a
GN	<i>Streptomyces</i> sp., <i>Trichoderma</i> sp. 5:1	0.33	ab
GN	<i>Trichoderma</i> sp., <i>Trichoderma</i> sp. 4: 2	1.00	abc
PDA	<i>Streptomyces</i> sp.	1.17	abc
PDA	<i>Trichoderma</i> sp.	1.17	abc
GN	<i>Trichoderma</i> sp.	1.17	abc
PDA	<i>Streptomyces</i> sp., <i>Trichoderma</i> sp. 3: 3	1.77	bcd
GN	<i>Streptomyces</i> sp., <i>Trichoderma</i> sp. 3: 3	2.33	cd
PDA	<i>Streptomyces</i> sp., <i>Trichoderma</i> sp. 5: 1	3.00	d
BNT 5%		1.64	

PDA= ; GN= ; BNT=

Formatted: Highlight

Formatted: Highlight

Formatted: Highlight

Formatted: Highlight

Formatted: Highlight

Formatted: Highlight

Formatted: Highlight

Formatted: Highlight

Formatted: Highlight

Formatted: Highlight

Formatted: Highlight

Comment [R5]: Expand in Footnote

Formatted: Highlight

Formatted: Highlight

LIST OF FIGURES

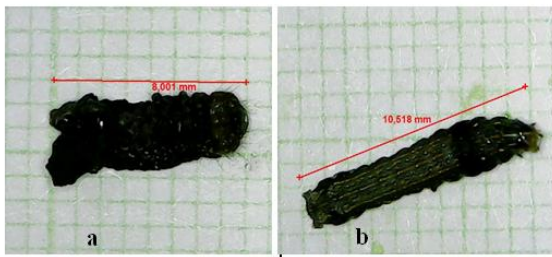


Figure 1. Larvae of *Spodoptera litura* instar VI

- a. EKGST formula treatment 5 : 1
- b. Control.

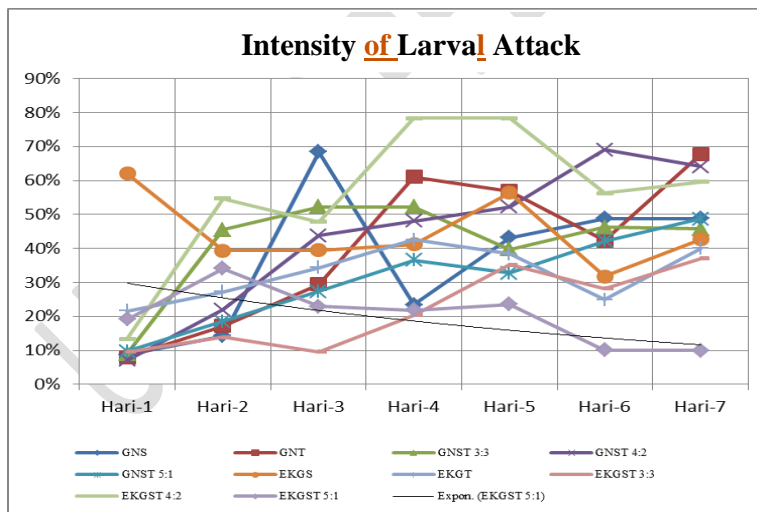


Figure 2. *Spodoptera litura* Larval Attack Intensity Chart

(GNS= _____ ; GNT= _____ ; GNST= EKGST= _____)