

Ehrlich solid tumor induced injury and toxicity in liver and kidney in female mice

ABSTRACT

Background and Objective: Cancer can develop in any organ at any time; it is a cellular malignancy that causes a breakdown in normal cell-cycle regulation, leading to unchecked proliferation and a lack of differentiation. It is the main factor in human mortality. The therapeutic efficacy of currently available drugs is minimal, and they do not prevent the growth of cancer. Current work aimed to study the effect of Ehrlich solid tumor (EST) on liver and kidney in female mice.

Materials and Methods: Twenty mice were randomly and equally divided into two groups and each group consists of 10 mice; 1st group is control group in which mice did not receive any treatment and 2nd group is EST group, including mice, each mouse were injected subcutaneously with $2.5-3 \times 10^6$ EAC cells.

Results: Current results revealed that; EST induced significant increase in the levels of serum urea, creatinine, potassium, chloride, aspartate transaminase (AST) and alanine transaminase (ALT) activities and alkaline phosphatase (ALP), kidney and liver injuries and conversely, a significant decrease in sodium, calcium as associated to control.

Conclusion: Current results indicated that EST induced damage and toxicity in liver and kidney.

Key words: Ehrlich solid tumor; mice; kidney functions; liver functions.

1. INTRODUCTION

Cancer is an abnormal cell growth brought on by aberrant cell proliferation. It can spread through the blood stream to other bodily organs. Both internal and external variables, including immunological disorders and inherited genetic abnormalities, can contribute to the development of cancer [1]. "Any of a broad range of illnesses known as cancer are defined by the growth of aberrant cells that proliferate rapidly and have the capacity to invade and destroy healthy bodily tissue" [2&3].

Cancer is a condition where cells accumulate abnormally as a result of an imbalance between proliferation and planned cell death [4]. The general word for all malignant tumors is cancer. Both benign and malignant tumors exhibit unchecked growth, but the latter are characterized by their propensity to differentiate, be invasive, and spread to other parts of the body [5&6]. Multiple genetic alterations are required for the emergence of cancer, which result in the loss of control over a variety of processes. Thus, cancer rates rise with age as starting mutations accumulate over a longer period of time and the impact of molecular repair mechanisms and the immune system is diminished. In addition to point mutations, which can result from insufficient DNA replication or repair during any cell division event, a variety of environmental variables, or so-called mutagens, can alter an organism's genetic makeup.

Breast cancer is the most public cancer amongst women world-wide (1.38m new cases/year, 23% of all cancers). Graded as fifth cause of death (the first in women) from cancer overall (45800 deaths). In Egypt, it represents almost 37% of cancer in women (18% overall).

Ehrlich solid tumour (EST) was originally classified as a spontaneous murine mammary adenocarcinoma that is comparable to breast cancer [5-7]. Ehrlich tumour can on different tissue by causing oxidative stress and toxicity [8-10]. Depending on how it is inoculated—subcutaneously or intraperitoneally—this aggressive and swiftly developing cancer may manifest in either the solid (EST) or ascetic form (EAC) [11-15]. Therefore; the current study aimed to study the effect of Ehrlich solid tumor (EST) on liver and kidney function and structure in female mice.

2. Material and methods

2.1 Induction of Ehrlich Solid Tumour (EST)

“The Egyptian National Cancer Institute (NCI; Cairo University, Egypt) provided the mice that carried Ehrlich ascites carcinoma (EAC). To maintain the tumor line and evaluate EST, viable cells ($2.5\text{-}3\times 10^6$ cells/mouse) were implanted subcutaneously into the left thigh of each recipient mouse” according to Elgharabawy et al., [7].

2.2 Experimental Animals

A total of 20 female Swiss albino mice (*Mus musculus*), 8–10 weeks old, weighing 25 ± 2 from Egypt Vaccine Establishment's (EVC) animal house colony were provided standard mice feed and water ad libitum. All the experiments were done in compliance with the guiding principles in the care and use of laboratory animals IACUC-SCI-TU-0223.

2.3 Experimental Design and mice groups

Mice were equally divided into two groups (Gp1 & Gp2): Gp1: Control Gp; the mice did not receive any therapy. Gp2: EST Gp, including mice, that were injected subcutaneously with $2.5\text{-}3\times 10^6$ EAC cells.

2.4 Blood Sampling:

After the end of experimental period (2 weeks), the mice were subjected to overnight fasting, then anaesthetised with an intraperitoneal injection of sodium pentobarbital then sacrificed. A comprehensive necropsy was undertaken. Blood samples have been collected aseptically by venepuncture into a dry clean and sterile tube without anticoagulant substances and allow it to clot. Blood samples permitted to stand for 30 min at 4°C for clotting and then centrifuged for 10 minutes at 3000 rpm. The collected serum was kept at -18°C until it was analysed to determine a blood parameter.

2.5 Liver enzymes and functions

Serum aspartate transaminase (AST) and alanine transaminase (ALT) activities were assessed by Tousson et al, [16] while alkaline phosphatase (ALP) levels were assessed by Tousson et al, [17]. Serum albumin was determined according to the approach proposed by Moustafa et al. [18] while total protein concentration was determined according to the approach proposed by El Moghazy et al. [19].

2.6 Kidney functions and Electrolyte estimation

Creatinine and urea were assessed after Tousson et al. [20] and Patton and Crouch [21] respectively. The method planned by El-Masry et al. [13] was surveyed to measure the levels of Potassium, calcium, sodium, and chloride ions using marketable kits of Indian Sensa-core electrolyte.

2.7 Histological preparation

“After necropsy the kidney and liver were immediately removed and fixed by immersion in 10% neutral buffered formalin solution for 24-48 h. The specimens were then dehydrated, cleared, and embedded in paraffin. Serial sections ($5\ \mu\text{m}$ thick) were sliced using a rotary microtome (Litz, Wetzlar; Germany) and stained with haematoxylin and eosin” according to Tousson [22].

2.8 Statistical Analysis

Data were expressed as the significance of difference was analyzed by one – way ANOVA. Values are expressed as means \pm SE. *and[#] significant difference from control and from EST group respectively at $p < 0.05$.

3.0 Results

3.1. EST morphology

Examination of EST-bearing mice showed that EAC cells infiltrated and mostly replaced the subcutaneous tissue with necrosis of the remaining skeletal muscles. Mice that inoculated with EAC cells intramuscularly in the left thigh of the hind limb developed a palpable solid tumor in 14 days following inoculation. Numerous newly formed blood capillaries (neovascularization) were seen in the surrounding tissue with mild or no inflammatory response. Such tumor showed tissue architectural disarray, as well as marked degree of cellular anaplasia, pleomorphism, and anisocytosis, with nuclear hyperchromasia, a typicality, hyperchromasia, and mitoses. Some tumor cells were differentiated into gland-like structures surrounding a lumen containing eosinophilic material (Figure 1).

3.2. EST induced liver toxicity:

A significant ($P < 0.05$) increase in the activities of aspartate aminotransferase, alanine aminotransferase, alkaline phosphatase while a significant ($P < 0.05$) decrease in albumin and total protein levels in EST group as compared with control mice (Table 1).

3.3. EST induced kidney toxicity:

A significant elevation in the levels of kidney functions (urea and creatinine), and electrolytes (potassium and chloride) while a significant depletion in electrolytes (calcium and sodium) in EST group as compared with control mice (Table 2).

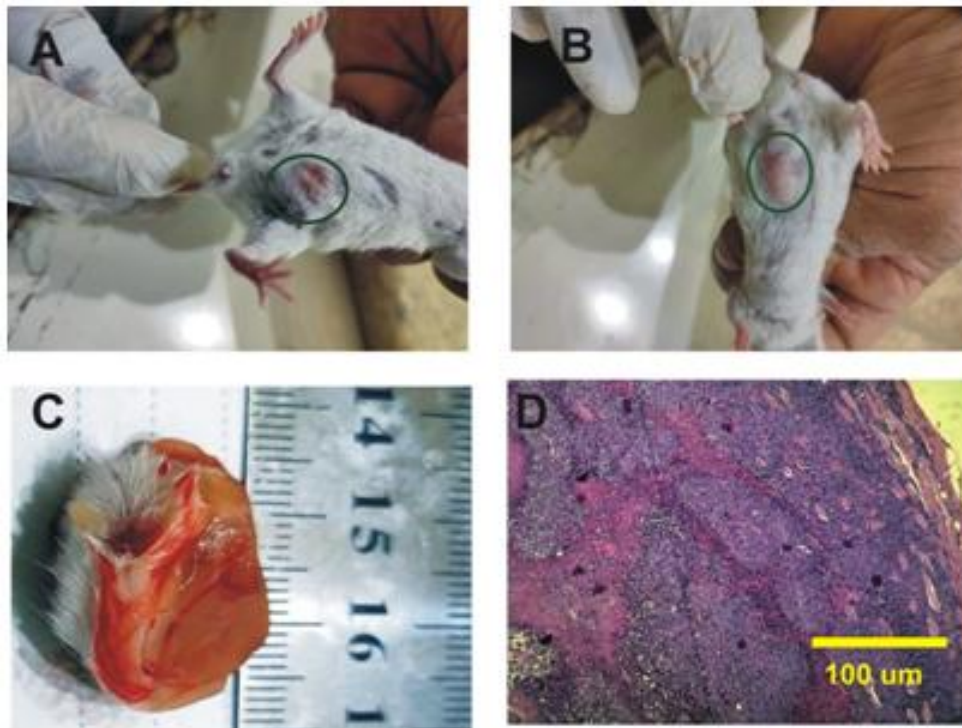


Figure 1: A&B: Ehrlich solid tumor (EST) in female mouse. C: EST after isolated from mouse. D: Marked degree of cellular anaplasia, pleomorphism, and anisocytosis, with nuclear hyperchromasia in EST.

Table 1: Changes in the liver functions in the two groups.

	control	EST
AST (U/I)	40.5 [#] ±1.98	82.3*±1.92
ALT(U/I)	49.2 [#] ±2.36	86.9*±2.03
ALP (U/I)	45.2 [#] ±2.83	61.2*±1.97
Albumin (mg/dl)	3.02 [#] ±0.14	2.54*±0.25
Total protein (g/dl)	6.7 [#] ±0.22	6.1*±0.31

Values are expressed as means ± SE. *and[#] significant difference from control and from EST group respectively at p< 0.05.

Table 2: Changes in the kidney functions and electrolytes levels in the two groups.

	control	EST
Creatinine (gm/dl)	0.91 [#] ± 0.8	1.72*± 0.07
Urea (gm/dl)	30.0 [#] ±1.12	45.8*±1.2
Na⁺ (mmol/l)	137.2 [#] ±0.7	125*± 0.87
K⁺ (mmol/l)	5.1 [#] ±0.1	8.24*±0.21
Cl⁻ (mmol/l)	106 [#] ±0.59	111.7*±1.36
Ca⁺⁺² (mmol/l)	1.01 [#] ±0.05	0.74*±0.02

Values are expressed as means ± SE. *and[#] significant difference from control and from EST group respectively at p< 0.05.

3.4 Liver Histopathology

The histopathological changes in the liver sections in the two groups were showed in Figures 2(A-C). Regarding the histopathological examination of the liver sections in the normal control group revealed normal histological pattern with normal central vein is surrounded by radiating cords of hepatocytes that are arranged in the form of anastomosing cords (strands) forming a network that extend from a central vein to the periphery of the hepatic lobules at which the portal tracts appeared (Figure 2A). Liver sections in EST revealed marked cellular damage, degeneration in hepatic cords in addition to karyomegally and pyknotic nuclei indicating apoptosis, moderate fibrosis, and marked diffuse necrosis of hepatic tissue, marked inflammatory cells and congested blood sinusoids (Figure 2A&C).

3.5 Kidney Histopathology

The histopathological changes in the kidney sections in the two groups were showed in Figures 3(A-C). Regarding the histopathological examination of the kidney sections in the normal control group revealed normal histological structure (Figure 3A). The control kidney is composed of two main parts: the renal cortex and the medulla which possess normal histological features. The renal cortex is enclosed by numerous renal corpuscles, each made up of a glomeruli and the Bowman's capsule (Figure 3A). There is a characteristically normal space between the glomeruli and Bowman's capsule to allow renal filtration. The renal corpuscles are surrounded by proximal and distal convoluted

tubules. Kidney sections in EST group revealed variable pathological changes in glomeruli and some parts of the urinary tubules as a marked damage and degenerated to the renal tissues, Glomerular atrophy, the Malpighian corpuscles that lost their characteristic configuration (Figure 3B&C).

4.0 Discussion And Conclusion

Every year, 10 million new cancer identifies are made; the trend in cancer diagnosis suggests that; by 2030, 20 million new cancer diagnoses will have been made [23]. “Cancer refers to any one of large number of diseases characterized by the development of abnormal cells that divide uncontrollably and have the ability to infiltrate and destroy normal body tissue” [24]. “Ehrlich carcinoma has a similarity with human tumors which are the most sensitive to chemotherapy due to the fact that it is undifferentiated and has a rapid growth rate” [25]. Therefore, the current study aimed to studies the effect of Ehrlich solid tumor (EST) in liver and kidney structure and functions.

Current study revealed that; EST induced elevations in the levels of ALT, AST, ALP and depletion in albumin and total proteins indicate liver injury. These results concurred with those of Said et al. [26], Aldubayan et al. [11], AbdEldaim et al. [27] who reported that; “EST induced liver toxicity in mice. In addition to EST induced liver tissue injury”. Also; Tousson et al. [28] and Abd Eldaim et al., [9] who reported that “Ehrlich ascites carcinoma (EAC) induced changes in liver functions and induced liver damage. Current study revealed that; EST induced elevation in the levels of urea, creatinine, potassium, chloride ions and depletion in calcium and sodium ions indicate kidney toxicity”.

Current study revealed that; EST induced elevations kidney functions and changes in electrolytes levels when compared to control. Our results concurred with those of Abd Eldaim et al., [8] who reported that; “EST induced elevation in kidney functions and damage in renal tissue structure. Ehrlich ascites carcinoma (EAC) induced changes in kidney functions and damage in kidney tissues”. Also our results agree with Mutar et al. [14] and Abd Eldaim et al., [27] who reported that; “EAC induced renal damage and toxicity”. Our results conclude that; EST induced toxicity and damage in liver and kidney.

Ethical Approval:

As per international standard or university standard written ethical approval has been collected and preserved by the author(s).

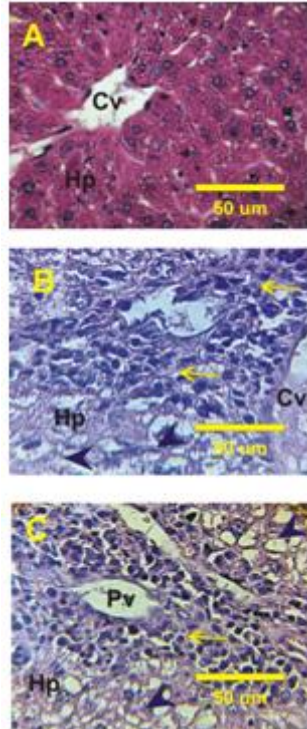


Figure 2: Photomicrograph of mice liver sections in the different experimental groups stained with Haematoxylin & Eosin. A: Liver sections in control group revealed normal histological pattern with normal central vein (CV) is surrounded by radiating cords of hepatocytes (Hp). B&C: Liver sections in EST revealed marked cellular damage, degenerated hepatocytes (arrow heads), cellular infiltrations (arrows), atrophy, and moderate congestion in central and portal veins.

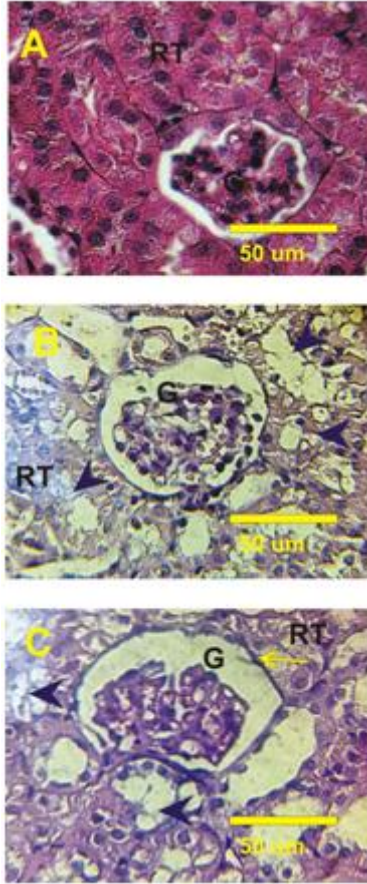


Figure 3: Photomicrograph of mice kidney sections in the different experimental groups stained with Haematoxylin & Eosin. A: Kidney section in control group revealed normal histological structure. **B&C:** Kidney sections in EST revealed marked degenerated to the renal tissues (arrow heads) and Glomerular atrophy (arrows).

5.0 References

- 1 Bray F, Ferlay J, Soerjomataram I, Siegel RL, Torre LA, Jemal A. Global cancer statistics 2018: GLOBOCAN estimates of incidence and mortality worldwide for 36 cancers in 185 countries. *CA: a cancer journal for clinicians*. 2018 Nov;68(6):394-424.
- 2 Siegel, R., Desantis, C., Virgo, K., Stein, K., Mariotto, A., Smith, T., Cooper, D., Gansler, T., Lerro, C., Fedewa, S., Lin, C., Leach, C., Cannady, R.S., Cho, H., Scoppa, S., Hachey, M., Kirch, R., Jemal, A. and Ward, E. (2012). Cancer treatment and survivorship statistics. *CA Cancer J Clin*, 62(4): 220-41.
- 3 Sosa, V., Moline, T., Somoza, R., Paciucci, R., Kondoh, H. and Me L.L. (2013). Oxidative stress and cancer: an overview. *Ageing Res Rev*, 12: 367-90.
- 4 Ferlay J, Colombet M, Soerjomataram I, Mathers C, Parkin DM, Piñeros M, Znaor A, Bray F. Estimating the global cancer incidence and mortality in 2018: GLOBOCAN sources and methods. *International journal of cancer*. 2019 Apr 15;144(8):1941-53.

- 5 Saad EA, Hassanien MM, El-Lban FW (2017) Nickel (II) diacetyl monoxime-2-pyridyl hydrazone complex can inhibit Ehrlich solid tumor growth in mice: a potential new antitumor drug. *Biochem. Biophys. Res. Commun.* 484: 579–585.
- 6 Rodgers KM, Udesky JO, Rudel RA, Brody JG. Environmental chemicals and breast cancer: an updated review of epidemiological literature informed by biological mechanisms. *Environmental research.* 2018 Jan 1; 160:152-82.
- 7 Elgharabawy RM, El Sayed IE, Rezk NA, Tousson E. Therapeutic Impact of *Costus (Saussurea lappa)* Against Ehrlich Solid Tumor-Induced Cardiac Toxicity and DNA Damage in Female Mice. *Frontiers in Pharmacology.* 2021;12.
- 8 Abd Eldaim MA, Tousson E, El Sayed IE, Abd El AE, Elsharkawy HN. (2019) Grape seeds proanthocyanidin extract ameliorates Ehrlich solid tumor induced renal tissue and DNA damage in mice. *Biomedicine & Pharmacotherapy*, 115:108908.
- 9 Abd Eldaim MA, Tousson E, El Sayed IE, Abd Elmaksoud AZ, Ahmed AA. (2021a) Ameliorative effects of 9-diaminoacridine derivative against Ehrlich ascites carcinoma–induced hepatorenal injury in mice. *Environmental Science and Pollution Research*, 28: 21835–21850.
- 10 Oshiba RT, Tousson E, Elsherbini YM, Abdraboh ME. (2021): Melatonin: A regulator of the interplay between FoxO1, miR96, and miR215 signaling to diminish the growth, survival, and metastasis of murine adenocarcinoma. *BioFactors.* 31; 2021,1758
- 11 Aldubayan MA, Elgharabawy RM, Ahmed AS, Tousson E. (2019) Antineoplastic activity and curative role of avenanthramides against the growth of ehrlich solid tumors in mice. *Oxidative medicine and cellular longevity*, 2019: Article ID 5162687, <https://doi.org/10.1155/2019/5162687>
- 12 El-Masry, T. A., Al-Shaalan, N. H., Tousson, E., Buabeid, M., & Alyousef, A. M. (2019). The therapeutic and antineoplastic effects of vitamin B17 against the growth of solid-form Ehrlich tumours and the associated changes in oxidative stress, DNA damage, apoptosis and proliferation in mice. *Pak. J. Pharm. Sci.* 32(6), 2801-2810.
- 13 El-Masry T, Al-Shaalan N, Tousson E, Buabeid M, Al-Ghadeer A. (2020): Potential therapy of vitamin B17 against Ehrlich solid tumor induced changes in Interferon gamma, Nuclear factor kappa B, DNA fragmentation, p53, Bcl2, survivin, VEGF and TNF- α Expressions in mice. *Pak. J. Pharm. Sci.*,33(1):393-401.
- 14 Mutar, T. F., Tousson, E., Hafez, E., Abo Gazia, M., & Salem, S. B. (2020). Ameliorative effects of vitamin B17 on the kidney against Ehrlich ascites carcinoma induced renal toxicity in mice. *Environmental Toxicology*, 35(4), 528-537.
- 15 Alotaibi B, Tousson E, El-Masry TA, Altwaijry N, Saleh A. Ehrlich ascites carcinoma as model for studying the cardiac protective effects of curcumin nanoparticles against cardiac damage in female mice. *Environmental Toxicology.* 2021 Jan;36(1):105-13.
- 16 Tousson E, Bayomy MF, Ahmed AA. Rosemary extract modulates fertility potential, DNA fragmentation, injury, KI67 and P53 alterations induced by etoposide in rat testes. *Biomedicine & Pharmacotherapy.* 2018 Feb 1;98:769-74.
- 17 Tousson E, Hafez E, Zaki S, Gad A. P53, Bcl-2 and CD68 expression in response to amethopterin-induced lung injury and ameliorating role of l-carnitine. *Biomedicine & Pharmacotherapy.* 2014 Jun 1;68(5):631-9.
- 18 Moustafa AH, Ali EM, Moselhey SS, Tousson E, El-Said KS. Effect of coriander on thioacetamide-induced hepatotoxicity in rats. *Toxicology and industrial health.* 2014 Aug;30(7):621-9

- 19 El-Moghazy M, Zedan NS, El-Atrsh AM, El-Gogary M, Tousson E. The possible effect of diets containing fish oil (omega-3) on hematological, biochemical and histopathological alterations of rabbit liver and kidney. *Biomedicine & Preventive Nutrition*. 2014 Jul 1;4(3):371-7.
- 20 Tousson E, El-Atrsh A, Mansour M, Abdallah A. (2019). Modulatory effects of *Saussurea lappa* root aqueous extract against ethephon-induced kidney toxicity in male rats. *Environmental Toxicology*. 2019;34(12):1277-1284.
- 21 Patton CJ, Crouch SR. Spectrophotometric and kinetics investigation of the Berthelot reaction for the determination of ammonia. *Analytical chemistry*. 1977; 49(3):464-9.
- 22 Tousson E. Histopathological alterations after a growth promoter boldenone injection in rabbits. *Toxicology and industrial health*. 2016 Feb;32(2):299-305.
- 23 DeSantis, C.; Ma, J.; Bryan, L. and Jemal, A. (2014): 'Breast cancer statistics, 2013', *CA: a cancer journal for clinicians*, 64(1), pp. 52-62.
- 24 Jemal, A., Bray, F., Center, M.M., Ferlay, J., Ward, E. and Forman, D., 2011. Global cancer statistics. *CA: a cancer journal for clinicians*, 61(2):69-90.
- 25 Ibrahim, H.M., Ghaffar, F.R.A., El-Elaimy, I.A. and Gouida, M.S., 2018. Antitumor and immunomodulatory efficacy of dual-treatment based on levamisole and/or taurine in Ehrlich ascites carcinoma-bearing mice. *Biomedicine & Pharmacotherapy*, 106:43-49.
- 26 Said, U.Z., Ahmed, N.H., Medhat, A.M. and Mustafa, M.M., 2014. Effects of omega-3 fatty acids against Ehrlich carcinoma-induced hepatic dysfunction. *Journal of Cancer Research and Experimental Oncology*, 6(2):20-28.
- 27 Abd Eldaim MA, Tousson E, Soliman MM, El Sayed IE, Aleem AA, Elsharkawy HN. (2021b) Grape seed extract ameliorated Ehrlich solid tumor-induced hepatic tissue and DNA damage with reduction of PCNA and P53 protein expression in mice. *Environmental Science and Pollution Research*, 28(17):21835-50.
- 28 Tousson E, Hafez E, Gazia MM, Salem SB, Mutar TF. (2020) Hepatic ameliorative role of vitamin B17 against Ehrlich ascites carcinoma-induced liver toxicity. *Environmental Science and Pollution Research*. 27: 9236–9246