

Original Research Article

Effect of explant age and exogenously applied IBA on Growth and rooting Potential of apical stem cuttings of potato for Early Generation Seed Potato Production

Abstract

Stem apical cuttings taken from potato plantlets at different physiological age (30 days old and 60 days old) in interaction with growth regulator indole-3-butyric acid (IBA) in different concentrations (100ppm, 200ppm and 300ppm) were investigated in this study for potato minituber production. The results declared that the rooting % was comparatively higher in cuttings taken from plants at younger growth stage i.e 30 days old. Different concentrations of IBA applied lead to various rooting response and at higher concentration (300ppm) highest rooting % (100%; 86.67%), mean root number (7.53 and 5.50) and average root length (1.93cm and 1.66cm) was recorded in both age groups 30 days and 60 days old explant cuttings, respectively, after 15 days of plantation. Similar trend in average shoot length and number of leaves was observed after 30 days and 50 days of plantation. Regarding tuber number which was found higher in cuttings of 30 days old mother plant as compared to 60 days old at all the three concentrations of IBA, but comparatively at 300ppm IBA concentration the average tuber number was higher i.e 6.66 in 30days old explant cuttings than 4.33 in 60 days old age group. Similarly the average tuber yield per plant was also found higher (142.97g) in 30 days old age group at 300ppm IBA concentration. It was concluded that the overall growth of minicuttings is highly affected by age of explant and cuttings taken from younger explants treated with 300ppm IBA performed better as compared to other treatment interactions.

Key words: apical stem cuttings, explant age, Indole butyric acid, Potato, seed production

Introduction

As a major food crop, potato ranks fourth in terms of production in the world. It is staple food crop in some countries and in others it is used as vegetable (Mahmood 2005; Zamil et al. 2010). Potatoes provides vitamin C, potassium, and dietary fiber in diet (McGill et al. 2013) and potato flesh is a good source of essential nutrients like B1, B2, B6, B9, some antioxidants and a number of trace elements (Khalid 2020). It is an important food and cash crop in Pakistan. In Pakistan potato crop covered 234.4 thousand hectares area and gave 4,681.0 thousand tons production (Pakistan Economic Survey 2020-21). Although potato production in Pakistan has increased many folds but its per acre yield is far less than in other parts of the world. Among the various factors responsible for low per acre potato production, unavailability of certified seed is the most important one (Qasim et al., 2013).

Usually, three potato crops i.e spring, summer and autumn are grown in different agro-ecological zones of Pakistan ranging from plains to hilly areas (Khan & Akhtar, 2006). Potato seed production in Pakistan is informal and usually recycled from previous crop harvest.

Comment [M1]: Effect of explant age and applied IBA on growth and rooting of apical stem cuttings of potato for early production

Comment [M2]: Apical stem cuttings

Comment [M3]: ages

Comment [M4]: (30 and 60 days)

Comment [M5]: (100, 200, and 300ppm)

Comment [M6]: stages

Comment [M7]: applied to lead to various rooting responses and at higher concentrations

Comment [M8]: the plantation

Comment [M9]: A similar

Comment [M10]: 30 and 50 days

Comment [M11]: the plantation

Comment [M12]: minitubers

Comment [M13]: the explant and cuttings are taken

Comment [M14]: Keywords may not be repeated with the manuscript title. Please change it please.

Comment [M15]: stapled

Comment [M16]: Delete

Comment [M17]: a vegetable

Comment [M18]: Potatoe tubers

Comment [M19]: provide

Comment [M20]: the diet

Comment [M21]: several

Comment [M22]: et al., 2020

Comment [M23]: potato crops

Comment [M24]: of area

Comment [M25]: of production

Comment [M26]: Delete

Comment [M27]: low per-acre potato production, the unavailability

Comment [M28]: agroecological

Comment [M29]: harvests

Currently, the common method for potato propagation is through tubers. Seed selection is basically on size with small ones been preferred due to their less market demand. The seed potato production by using conventional system has not been effective in eluding or reducing the buildup of diseases which consequently led to reduce seed quality and lower tuber yields (Chindi et al., 2014). Gildemacher et al., 2009; Nyende et al., 2005 reported that seed recycling and monoculture contributes to accumulation of seedborne diseases in potato in subsequent seasons, resulting in losses in both tuber quality and yield over seasons. The use of seed potatoes infected by fungi, bacteria and/or viruses reduces the potential yield of the crop as a result of the progressive degeneration caused by such pathogens during successive field generations which contributes to disease build up. This requires the regular renewal of the seed potatoes (Bisognin et al., 2015). A critical constraint to meet increasing demand is the non-availability of high quality seed of most adapted varieties with considerable resistance to pest and diseases.

Comment [M30]: being

Comment [M31]: Seed potato production by using a conventional system

Comment [M32]: reduced

Comment [M33]: the accumulation of seed-borne

Comment [M34]: losses

Comment [M35]: build-up

Comment [M36]: meeting increasing demand is the non-availability of the high-quality seed

Comment [M37]: pests

Comment [M38]: disease-free

Certified seed production is an essential factor for higher and disease free seed potato production. One of the attempts to multiply potato seeds quickly and in larger quantities is by rapid propagation techniques. Harahagazwe et al., 2018 illustrated that for seed potato production, Rapid Multiplication Techniques (RMT) can be carried out with in vitro plantlets and micro-tubers production, or can also be practiced with in vivo production of cuttings and minitubers. Yasmin and Zakaria, 2019 stated that potato propagation materials like sprout cuttings, shoot tip cuttings or nodal segments with at least one bud and true potato seeds can be used.

Comment [M39]: sprout and shoot

Rooted apical stem cuttings in the Green house are the easiest and cheapest means of propagating potato (Struik and Wiersema, 1999) for minitubers production as an initial step in certified seed production. They have faster regeneration potential and are true to type. Their ability to regenerate rapidly gives them great potential for conservation of potato clones and production of potato seed. If rooted apical stem cuttings originate from true to type and pathogen-free planting material, they serve as an efficient means of producing basic seed. Dahshan, et al., 2018 studied the possibilities to propagate potato through stem cuttings and to enhance the growth capabilities of these cutting by using plant growth regulators (PGR) e.g., IBA. Each physiological process in plants is usually regulated by a number of defined hormones, some of them often exerting opposite effects. In potato, for example, distinct hormones (IAA, cytokinins, abscisic acid) stimulate some tuberization stages (Kolachevskaya et al., 2018).

Comment [M40]: Greenhouse

Comment [M41]: potatoes

Comment [M42]: the conservation of potato clones and the production

Comment [M43]: true-to-type

Comment [M44]: the possibility to propagate potatoes through stem cuttings and enhance

Comment [M45]: In potatoes, for example, distinct hormones (IAA, cytokinins, and abscisic acid) stimulate some tuberization stages

Ishartati and Rehan, 2019 reported that potato seeds can be procured through cuttings by treating the cuttings with plant hormones that encourage and accelerate the formation of roots, new shoots, and enhance the quality and number of shoots and roots.

Comment [M46]: and new

Plant growth of apical stem cuttings of white potato derived from disease free G₀ plants for mass production of potato G₁ seed tubers was demonstrated by Nikmatullah et al., 2018. Different cutting lengths, Indole Acetic Acid (IAA) concentrations, and age of mother plants were evaluated for cutting's growth and survival rate. The highest survival rate and cutting growth was obtained from apical cuttings taken from two to three weeks old mother plants treated with 1 ppm IAA.

Comment [M47]: disease-free

Comment [M48]: were

Cuttings obtained from tissue cultured plantlets are seen as an alternative to reduce the amount of plantlets that are cultivated *in vitro* and then used in the production of potato mini-tubers. This technique consists of rooting the mini-cuttings taken from newly acclimatized plants. Several

Comment [M49]: tissue-cultured

Comment [M50]: number

factors may influence the adventitious rooting of potato mini-cuttings, particularly the nutritional status of the plant and the degree of juvenility of propagules (Silva et al., 2011). The degree of juvenility of propagules can also contribute to rhizogenesis, as a result of the morphological and physiological changes that occur during plant development (Hackett, 1987).

Comment [M51]: Several factors may influence the adventitious rooting of potato mini-cuttings, particularly the nutritional status of the plant and the degree of juvenility of propagules

Searching for other means to propagate potato is very crucial nowadays because of very high prices of seed tubers. The present research work has been conducted with the aim to assess the effect of physiological age of the mother plant on rooting capability of apical mini cuttings of potato clones under Green house conditions and to evaluate the effect of various concentrations of indole butyric acid (IBA) on their rooting performance.

Comment [M52]: potatoes

Comment [M53]: the very

Comment [M54]: to

Comment [M55]: the physiological

Comment [M56]: the rooting

Comment [M57]: Greenhouse

Materials and Methods

Experimental Site/location:

This study was conducted in the Green House at Hazara Agriculture Research Station, Abbottabad.

Materials and methods:

In the experiment the propagated material consisted of potato plants apical mini-cuttings. The mini-cuttings were taken from mother explants obtained from *in vitro* micro-propagated plantlets and were transplanted in the Green House. Size of apical cutting was 2 to 2.5 cm.

Comment [M58]: experiment,

Comment [M59]: Greenhouse

Comment [M60]: The size of the apical

Comment [M61]: Greenhouse

The cuttings were planted in sterilized peat moss soil under Green house conditions (Fig. 1). For rooting, Indole-3-butyric acid (IBA) was used at different concentrations. The experiment was conducted in a 3 × 2 factorial arrangement with factor one was IBA at three different concentrations (100ppm, 200ppm and 300ppm); and factor two was physiological age of the explant counted from the time of transplantation in the green house (30 days old, 60 days old) having three replications with fifteen mini-cuttings in each replication.

Comment [M62]: the physiological

Comment [M63]: greenhouse

Data on the number of days for roots initiation, root number, root length, shoot length, number of leaves and average number of tubers/plant and tuber yield were recorded. The data were subjected to analysis of variance for the F test and the means were compared by the Least significant difference test (LSD) at 5% probability of error with the aid of statistical program Statistix 8.1.

Comment [M64]: root

Comment [M65]: the number of leaves, and the average

Comment [M66]: at a 5%

Comment [M67]: the statistical

Comment [M68]: Please refer to a statistical reference.

Results and Discussion

Root Initiation

For recording data on root initiation the apical stem cuttings were uprooted and observed. No roots were recorded in cuttings of both 30 days and 60 days old explant after 10 days of plantation (Table 1). The uprooted cuttings were replanted for next time observation. All the cuttings were watered regularly to keep soil moist for rapid root initiation.

Comment [M69]: Initiation,

Comment [M70]: the next time

Comment [M71]: the soil



Figure 1: Apical mini cuttings planted in peat moss soil in the greenhouse after treatment with different IBA concentrations.

Comment [M72]: greenhouse

Table 1: Percent mean root initiation in potato apical cuttings from 30 and 60 Days old mother plants treated with different IBA concentrations.

Comment [M73]: means

IBA conc.	% Root Initiation					
	After 10 days		After 15 days		After 20 days	
	30 Days old	60 Days old	30 Days old	60 Days old	30 Days old	60 Days old
100ppm	0	0	53.33bc	33.33c	83.33a	66.67b
200ppm	0	0	86.67a	60b	100a	93.33a
300ppm	0	0	100 a	86.67a	100a	100a

Means followed by different letters are significantly different at $P \leq 0.05$

After 15 days of plantation, cuttings from 30 days old mother plants showed 100% root initiation at 300ppm IBA concentration (Fig. 2) followed by 86.67% at 200ppm while significantly lower rooting % was recorded in the IBA treatment of 100 ppm (Table 1). Similarly in the 60 days old explant cuttings the highest mean rooting % after 15 days of plantation was recorded at 300 ppm IBA i.e 86.67 %. While lowest 33.33% was found at lowest IBA concentration (Table 1). The results here are in accordance with those of Hossain et al. (1998) who observed that root induction in the potato stem cuttings was quicker at a higher IBA concentration than at lower IBA concentrations ($\ll 50 \text{ g L}^{-1}$).

Comment [M74]: the plantation

Comment [M75]: the plantation

Comment [M76]: the lowest

Comment [M77]: the lowest

Comment [M78]: by

Nizamud Din et al., (2005) also reported similar findings that the maximum (81.66 %; 81.67 %) number of cuttings of MF-I and LT-8 potato lines, respectively induced roots at higher IBA concentrations which were significantly higher than the percentage of roots produced by cuttings treated with 100 ppm IBA.

Comment [M79]: Uddin

After 20 days of transplantation an increase in rooting percentage has been observed in both age groups at all the three IBA concentrations (Table 1). However the rooting % was comparatively higher in cuttings taken from plants at younger growth stage, i.e 30 days old. Regarding IBA concentrations at 300ppm 100% rooting was recorded in both 30 days old and 60 days old plant cuttings while at 100ppm 83.33% and 66.67% rooting was found in 30 days old and 60 days old plant cuttings respectively (Table 1). Rasmussen et al., 2015 stated that apical cuttings of potato plants derived from 2 and 3 week old mother plants had faster root and shoot growth and a

Comment [M80]: transplantation,

Comment [M81]: Delete

Comment [M82]: However,

Comment [M83]: stages

Comment [M84]: were

higher survival rate. The age of the mother plants determines the maturity of the stem from which the cuttings are taken: maturity increases as the physiological age of the mother plant increases. Juvenile cuttings have been shown to root better than mature cuttings possibly due increase of lignification in older cutting and the production of a rooting inhibitor as the stem age increases (Milborrow, 1994)



Figure 2: Root initiation in the apical cuttings.

Root number:

Table 2: Mean number of roots and root length in potato apical cuttings of 30 and 60 Days old mother plants treated with different IBA concentrations after 15 and 30 days of plantation.

Comment [M85]: the plantation

IBA conc.	Root number				Root length (cm)			
	After 15 days		After 30 days		After 15 days		After 30 Days	
	30 Days old	60Days old	30 Days old	60 Days old	30 Days old	60 Days old	30Days old	60Days old
100 ppm	2.50d	2.33d	8.46b	8.46b	0.93b	0.21c	4.05a	2.86b
200 ppm	5.05b	3.58c	10.73b	8.80b	0.96b	0.73bc	4.03a	3.76ab
300 ppm	7.53a	5.50b	15.8a	15a	1.93a	1.66a	4,26a	3.60ab

Means followed by different letters are significantly different at $P \leq 0.05$

Eight cuttings were randomly selected in each replication of every treatment combination. Regarding root number after 15 days it was observed that cuttings of younger age mother plants i.e 30 days old, more root number was recorded as compared to 60 days old mother plant at all the three IBA concentrations (Table 2). Further, the different concentrations of IBA also have significant effect on root number and at 300ppm concentration, more roots were recorded i.e. 7.53 and 5.50 mean number of roots in 30 days and 60 days old mother plant cuttings, respectively, while at lowest concentration i.e 100ppm only 2.50; 2.33 mean root number was recorded in both 30 days and 60 days old age group cuttings (Table 2). A similar trend in increase in mean root number was observed after 30 days of plantation in cuttings of both age groups at all the three IBA concentrations (Table 2). According to Davis and Hassig (1990), the production of adventitious roots in plants through cell division, multiplication and differentiation is also controlled by plant growth substances especially auxins. This implies that treating stem cuttings with IBA can not only increase the rooting percentage but also root initiation and number of roots. Various research experiments has confirmed that application of optimal hormone concentration is very important for successful rooting of cuttings (Leakey et al., 1982; Ezzat, 2016). IBA treatment of stem cuttings may cause cambial activity that resulted in root induction and ultimately increase in number of roots per cutting. Nymora and Mnzwa (1983) illustrated that IBA increased elasticity of cambium and thus accelerated cell division and produced more number of roots in treated cuttings. However, regarding physiological age of mother plants comparatively no significant difference in mean root number was seen after 30 days of transplantation (Table 2).

- Comment [M86]: plants
- Comment [M87]: had more root numbers recorded
- Comment [M88]: had more root numbers recorded
- Comment [M89]: a significant
- Comment [M90]: the lowest
- Comment [M91]: the increase
- Comment [M92]: Delete

- Comment [M93]: the number
- Comment [M94]: have confirmed that the application
- Comment [M95]: the successful
- Comment [M96]: an increase in the number
- Comment [M97]: the elasticity
- Comment [M98]: more roots
- Comment [M99]: the physiological age of mother plants comparatively,

Root length:

Data showed that root length recorded in 30 days old explant cuttings after 15 days of plantation is significantly higher than 60 days old explant cuttings (Table 2). After 15 days of plantation regarding IBA concentrations it is stated that higher IBA concentration caused increase in root length in both age groups with highest 1.93cm and 1.66cm length was recorded at 300ppm in 30days old and 60 days old explant cuttings, respectively (Table 2). In apple (Badshah at al., 1995) and in Apricot (Ishtiaq at al., 1988) reported that root length greatly increased with increasing IBA concentration. The increase in root length is may be due to effect of IBA on metabolic translocation and increased plasticity of the cell wall of cambium cells as reported by Nymora and Mnzwa 1983; Ishtiaqat al., 1989. The results are also supported by the findings of El-Gamal (1992) who dipped stem cuttings of potato in potassium of indole butyric acid solution at 6000 ppm for one minute and demonstrated that this treatment succeeded to stimulate adventitious roots and affected the production and growth parameters of potato e.g., fresh and dry weights of roots. After 30 days of transplantation a considerable increase in average root length has been found in all the IBA treatments for both age group cuttings (Table 2).

- Comment [M100]: concentrations,
- Comment [M101]: an increase
- Comment [M102]: the highest
- Comment [M103]: Delete
- Comment [M104]: Apple (Badshah et al., 1995) and Apricot (Ishtiaq et al., 1988)
- Comment [M105]: The increase in root length may be due to the effect
- Comment [M106]: et

- Comment [M107]: transplantation,

Table 3: Mean number of new fresh leaves and shoot length in potato apical cuttings of 30 and 60 Days old mother plants treated with different IBA concentrations.

- Comment [M108]: numbers

IBA conc.	Shoot length (cm)				Leaf number			
	After 30 days		After 50 days		After 30 days		After 50 Days	
	30 Days old	60 Days old	30 Days old	60 Days old	30 Days old	60 Days old	30 Days old	60 Days old

- Comment [M109]: numbers

100 ppm	1.17c	1.2c	8.63c	8.1c	2.1b	1.3a	10.6bc	9.3c
200 ppm	1.96ab	0.85c	9.16bc	8.2c	2.6ab	2.4ab	11.5b	9.8bc
300 ppm	2.45a	1.38bc	11.5a	10.6ab	2.9ab	2.4ab	14.3a	11.3b

Means followed by different letters are significantly different at $P \leq 0.05$

Shoot length:

Vegetative data presented in Table 3 revealed that plantlets developed from cuttings taken from 30 days old explants has greater shoot length as compared to plantlets developed from 60 days old explant cuttings. After 30 days of plantation of cuttings an increase in shoot length was observed in both age groups and the growth rate was comparatively higher in the cuttings taken from younger age explants i.e 30 days old. This may be due to the fact that the mother plantage determines the maturity of the stem from which the cuttings are taken. The observations reported by Nikmatullah et al., 2018 also support our results who found that apical cuttings of potato plants derived from 2 and 3 week old mother plants had faster root and shoot growth and a higher survival rate. The maximum mean shoot length (2.45cm; 1.38cm) was obtained at highest IBA concentration i.e. at 300ppm in both the age group cuttings i.e. 30 days old and 60 days old, respectively (Table 3). Similar trend in increase in growth rate of the cuttings were recorded after 50 days of plantation (Table 3). The results are in agreement with the findings of Dahshan et al., 2018 who showed that treated potato cv Lady Rosetta with 6000 ppm IBA significantly increased the stem cuttings length compared with other treatments. Tsoka et al., 2012 also reported higher mean plant height and root length in potato plants derived from apical stem cuttings under aeroponic system.

Comment [M110]: have

Comment [M111]: cuttings,

Comment [M112]: the highest

Comment [M113]: A similar trend in the increase in the growth rate of the cuttings was

Comment [M114]: theaeroponic

Leaf number:

Data representing mean leaf number showed that at 100ppm IBA concentration the average mean leaf number was lower in both age group cuttings and a considerable increase in mean leaf number has been recorded with increase in IBA concentration after 30 days and 50 days of plantation (Table 3). Regarding age of mother plant it was found that the mean leaf number was higher in cuttings taken from 30 days old explant as compared to 60 days old explant cuttings (Table 3). The results are consistent with the findings of Bhatia et al., 1992 who recorded superiority of the application of IBA over other plant growth regulators for plant height, number of branches and number of leaves in potato and gave the highest dry weight of foliage.

Comment [M115]: the increase

Comment [M116]: Regarding the age of the mother plant,

Comment [M117]: the superiority

Comment [M118]: the number of branches, and the number of leaves in potatoes

Tuber number and average yield:

Regarding yield data minitubers were first categorized in to three categories on the basis of weight i.e large > 20g; medium 10-20g; small < 10g (Fig. 3). Statistical analysis of the recorded data revealed that average mean

Comment [M119]: into

Comment [M120]: based on

Comment [M121]: the average

Table 4: Mean tuber number and average yield per plant in potato apical cuttings taken from 30 and 60 Days old mother plants treated with different IBA concentrations.

IBA	Mean Tuber number	Av. Yield per plant
-----	-------------------	---------------------

conc.									(g)	
	30 Days old				60 Days old				30 Days old	60Days old
	large	medium	small	Total	large	medium	small	Total		
100 ppm	1.00a	0.33b	2.66b	4.00bcd	0.33ab	0.33b	2.66b	3.00d	119.67ab	71.54c
200 ppm	0.33ab	1.00ab	3.67a	5.00b	0.66ab	0.00b	2.66b	3.33cd	101.86bc	78.04c
300 ppm	0.00b	1.66a	5.00a	6.66a	0.00b	0.66ab	3.66ab	4.33bc	142.97a	87.17bc

Means followed by different letters are significantly different at $P \leq 0.05$

tuber number was higher in cuttings of 30 days old mother plant as compared to 60 days old (Table 4) (Fig. 4) at all the three concentrations of IBA, however, among the three IBA concentrations the average tuber number was higher at 300ppm IBA concentration i.e 6.66 and 4.33 followed by 5.00 and 3.33 mean tuber numbers at 200ppm in cuttings of 30 days old and 60 days old age groups, respectively (Table 4). Moreover it was observed that there was greater number of small tubers produced at 300ppm concentration (Table 4). Results of our study are supported by the findings of Dahshan et al., (2018) who declared that use of growth regulators especially in high concentration resulted in higher values of the mostly studied potato plant characteristics e.g plant height, plant fresh and dry weights, number of tubers per plant and total tuber yield per plant as compared to the control.

Average tuber yield per plant was higher (142.97g) in 30 days old age group at 300ppm IBA concentration. The lowest average tuber yield i.e 71.54g was recorded at 100ppm IBA concentration in 60 days old mother plant age group.



Figure 3: The three tubercategories on the basis of weight i.e large > 20g; medium 10-20g; small < 10g (left to right).

Comment [M122]: Moreover,

Comment [M123]: a greater

Comment [M124]: The results

Comment [M125]: the use

Comment [M126]: the number

Comment [M127]: The average

Comment [M128]: based on

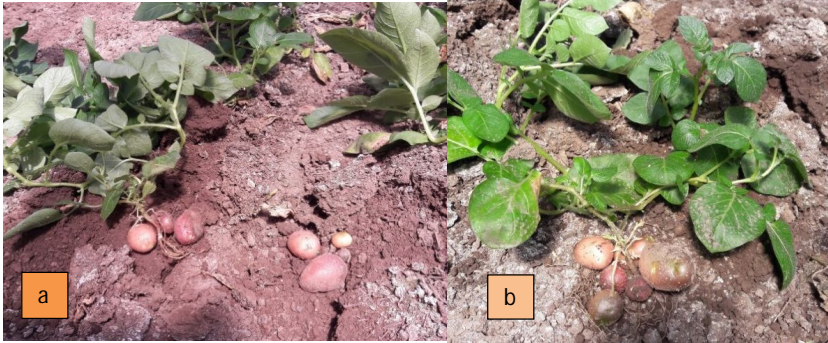


Figure 4: Tubers harvested in 60 days old mother plant cuttings (a); tubers from 30 days old age group (b).

Conclusion and recommendation:

Results of the present study declared that mini-cuttings from young *in vitro* grown potato plants have higher rooting capacity compared to mini-cuttings from mature plants. Moreover, IBA concentrations especially at higher level, i.e. 300ppm has significant effect on most studied characteristics e.g., root number, shoot length, tubers yield.

The findings of this study may encourage the potato growers to use potato stem tip cuttings as a new and cheaper method to grow potato instead of expensive imported seed-tubers. It is suggested that the use of apical stem cuttings can be a fast and efficient method for mass propagation and to increase yield of minitubers in seed potato production cycle.

Literature cited:

1. Badshah N, Rahman N, Zubair M. Effect of indolebutyric acid (IBA) on the cuttings of M-26 and M-27 apple rootstocks. *Sarhad J. Agri.* 1995; 11(4): 449-453.
2. Bhatia AK, Pandita ML, Khurana SC. Plant growth substances and sprouting conditions. II Effect of tuber yield and multiplication rate in seed potato production. *J. Indian Potato Assoc.* 1992; 19 (3-4): 154-156.
3. Bisognin DA, Bandinelli MG, Kielse P, Fischer H. Rooting Potential of Mini-Cuttings for the Production of Potato Plantlets. *American Journal of Plant Sciences.* 2015;06: (02) 366-371. DOI: <https://doi.org/10.4236/ajps.2015.62042>.
4. Chindi A, Giorgis GW, Soloman A, Tessama L, Negash K. Rapid multiplication techniques (RMTs): A tool for the production of quality seed potato (*Solanum tuberosum* L.) in Ethiopia. *Asian J. Crop Sci.* 2014; 6 (3): 176-185.
5. Dahshan AMA, Zaki HEM, Moustafa, YMM, Abdel-Mageed YT, Hassan MAM. Using stem tip cuttings in potato production. *Minia J. of Agric. Res. & Develop.* 2018; 38 (2): 363-389. <https://www.researchgate.net/publication/329371871>
6. Davis DT, Hassig BE. Chemical control of adventitious root formation in cuttings. *Bull. Plant Growth Regul. Soc. Am.* 1990; 18:1-17.

Comment [M129]: a significant

Comment [M130]: and tubers yield

Comment [M131]: Delete

Comment [M132]: seed tubers

Comment [M133]: the yield of minitubers in the seed potato production cycle.

Comment [M134]: Italic

7. El-Gamal AS. Physiological studied on potatoes. Ph.D. Thesis. Fac. Agric., Mansoura Univ., Egypt. 1992.
8. Ezzat A S. Effect of Some Treatments on Improving Seed Multiplication Ratio in Potato by Stem Cutting. J. Plant Production. 2016;7(7): 683–693. DOI: <https://doi.org/10.21608/JPP.2016.46138>
9. Gildemacher PR, Demo P, Barker I, Kaguongo W, Woldegiorgis G, Wagoire WW, Wakahiu M, Leeuwis C, Struik PC. A description of seed potato systems in Kenya, Uganda and Ethiopia. American Journal of Potato Research. 2009; 86: 373-82. DOI: <https://doi.org/10.1007/s12230-009-9092-0>
10. Hackett WP. Donor Plant Maturation and Adventitious Root Formation. In: Davies, T.D., Haissig, B.E. and Sankhla, N., Eds., Adventitious Root Formation in Cuttings, Dioscorides Press, Portland. 1987.
11. Harahagazwe D, Andrade-piedra J, Schulte-geldermann E. Current Situation of Rapid Multiplication Techniques for Early Generation Seed Potato Production in Sub-Saharan Africa. CGIAR Research Program on Roots, Tubers and Bananas (RTB). (RTB Working Paper. No. 2018-1.). 2018. DOI: <https://doi.org/10.4160/23096586RTBWP20181>
12. Hossain MJ, Khan MA, Hoque MA. Effect of IBA and NAA on rooting of potato stem cuttings. J. Indian Potato Assoc. 1998; 25(1 &2): 53-56.
13. Ishartati E, Rehan PR. 2019. Application of leaf fertilizer and plant hormones to accelerate shoot cuttings growth on the potato varieties of Granola Lembang (*Solanumtuberosum* L.). Journal of Tropical Crop Science and Technology 1(2): 52-63. <https://doi.org/10.22219/jtcest.v1i2.10277>
14. Ishtiaq HM, Wazir, KD, Haq AI. Initiation of roots in Trevatt and Nencape apricot cuttings as affected by indolebutyric acid (IBA). Sarhad J. Agric. 1988; 4(6): 793-798.
15. Khalid W, Khalid M Z, Aziz A, Tariq A, Ikram A, Rehan M, Younas S, Bashir A, Fatima A. Nutritional Composition and Health Benefits of Potato: A Review. Adv Food & Nutr Sci. 2020; 5: 7-16. DOI: <http://dx.doi.org/10.21065/25631640.5.7>
16. Khan NP, AkhtarJ. Competitiveness and policy analysis of potato production in different agro-ecological zones of Northern Areas: Implications for food security and poverty alleviation. Pak. Develop. Rev. 2006; 1137-1154.
17. KolachevskayaOO, Sergeeva LI, GetmanIA, LominSN, SavelievaEM ,Romanov G A. Core features of the hormonal status in *in vitro* grown potato plants. Plant Signal Behav.2018;13(5):e1467697pp1-4.DOI: <https://doi.org/10.1080/15592324.2018.1467697>
18. Leakey RRB, Chapman VR, Longman KA. Physiological studies for tree improvement and conservation. Some factors affecting root initiation of Triplochitonscleroxylon K. Schum. For Ecol. Manage. 1982; 4: 53- 66.
19. Mahmood A. A study of planting method and spacing on yield potato using Tps, Asian Journal of Plant Sciences. 2005; 4(2):102-105, 2005.
20. McGill CR, Kurilich AC, Davignon J. The role of potatoes and potato components in cardiometabolic health: A review. Annals of Medicine. 2013; 45: 467–473.
21. Milborrow BV. Inhibitors. In: Advanced Plant Physiology. M.B. Wilkins (ed.). Pitman Publishing, London.1994.

Comment [M135]: Italic

22. Nikmatullah A, RamadhanI, SarjanM. Growth and yield of apical stem cuttings of white potato (*Solanumtuberosum* L.) derived from disease-free G0 plants. *Journal of Applied Horticulture*. 2018; 20(2): 139-145.
23. NizamUddin, Mirza B, Qamar M, Khabir A. Root formation in true potato seed parental lines by IBA application. *Pak. J. Agri. Sci.* 2005; 42(3-4): 29-35.
24. Nymora MS, Mnzwa. Rooting response to Juvenile and adult cuttings of apple (*Malussylvestris* L.) and peach (*Prunuspersica* L.) to IBA in Tanzania, *BeitragezuotropischenLandwirtscazt and veterinarmeddizin*. 1983; 20(2): 135-140 (Hort. Absts. 53(8):552).
25. Pakistan Economic Survey 2020-21. Ministry of Finance, Government of Pakistan. https://www.finance.gov.pk/survey_2021.html
26. Qasim M, Khalid S, Naz A, Khan MZ, Khan SA. Effects of different planting systems on yield of potato crop in Kaghan Valley: A mountainous region of Pakistan. *Agricultural Sciences*. 2013; 4(4): 175-179. DOI:<https://doi.org/10.4236/as.2013.44025>.
27. Rasmussen A, Hosseini SA, Hajirezaei MR, Druge U, Geelen D. Adventitious rooting declines with the vegetative to reproductive switch and involves a changed auxin homeostasis. *J. Exp. Bot* 66. 2015; (5):1437-1452. DOI: <http://dx.doi.org/10.1093/jxb/eru499>
28. Silva EC, Pinto CA, Souza-Dias JAC, Araújo TH. Uso de Reguladores de CrescimentoemBrotosDestacados de Batata-Semente. *HorticulturaBrasileira*. 2011; 29: 504-509. DOI:<http://dx.doi.org/10.1590/S0102-05362011000400010>
29. Tsoka O, Demo P, Nyende AB, Ngamau K. Potato seed tuber production from in vitro and apical stem cutting under aeroponic system. *African Journal of Biotechnology*. 2012; 11(63): 12612-12618. DOI: <http://dx.doi.org/10.5897/AJB10.1048>.
30. Yasmin MFM, Zakaria. Effect of Planting Time and Density of Top Shoot Cuttings in Potato Production. *International Journal of Natural and Social Sciences*. 2019; 6(1): 60–68. DOI: <https://doi.org/doi.org/10.1016/j.anres.2014.08.001>
31. Zamil MF, Rahman MM, Robbani, MG, Khatun T. Combined effect of nitrogen and plant spacing on the growth and yield of potato with economic performance. *Bangladesh Res. Publ. J.* 2010; 3: 1062-1070.