

# Spatial Assessment of Flood Vulnerability of Developed Properties in Port Harcourt Metropolis, Rivers State, Nigeria

## Abstract

*The study assessed the flood vulnerability of developed properties (DP) in Port Harcourt Metropolis, Rivers State, Nigeria. The study made use of DP data obtained from the open street map, and the combination of landuse/land cover map obtained from landsat imagery of 2020, soil texture data, elevation data, and proximity to active river channel. Descriptive statistics were used for data analysis. Findings showed that 44014 DPs were estimated in Port Harcourt Metropolis. Results showed that the spatial extent of flood lowly vulnerable areas in Port Harcourt Metropolis was 60.78 sq. km (13.22%), moderately vulnerable areas were 259.72 sq km (56.51%) and highly vulnerable areas were 139.14 sq. km (30.27%). Furthermore, 3977 (9.04%) of DP were lowly vulnerable to flood, 34754 (78.96%) were moderately vulnerable to flood while 5283 (12%) were highly vulnerable to flood in the study area. The study can be concluded that the number of developed properties in the Port Harcourt Metropolis varied based on different flood vulnerability levels as more of them were found within the moderate vulnerability levels. Based on the findings, the study recommended that all the developed properties lying in the high flood vulnerability level should be relocated to better locations or at least conform to ways of guiding against the effect of flood on the developed properties; and also periodic enlightenment of the effect of flood to the public would help a lot of preventing people from constructing their house in the highly and moderately flood vulnerable levels.*

**Keywords:** Developed properties, Flood, Vulnerability, Open street

## Introduction

The people of the South-south region of Nigeria are no strangers to flooding as they have occupied this highly flood prone area for many years. The region is the recipient of over 90% of all the water the Niger-Benue River systems and 100% of all water from streams rising in the Delta Region (Amangabara & Obenade 2015). It is also bordered by the Atlantic Ocean, the terrain is flat and settlements are along the river systems so the region is exposed to high vulnerability of flood. Flooding is consistent phenomenon in Nigeria and many river-bound state of the country are always at the receiving end of its impact. According to Babatunde (2011) the nationwide effect of the 2010 flood in Nigeria, had about 1,555 people killed; 258,000 people displaced and properties destroyed. Many studies have shown that 2012 flood in Nigeria is her worst hit in many years and still the activities of flooding never ceased even after. According to Mmom & Aifesehi (2013) flooding is a natural phenomenon, and the people of the Niger Delta have experienced it almost every year with varying degrees of severity.

Floods take a heavy toll on society, costing lives, damaging buildings and property, disrupting livelihoods, and sometimes necessitating national disaster relief, which has risen to record levels in recent years (National Research Council, 2015). Despite the rapid economic growth and urbanization witnessed in many developing nations, flooding is the major development challenge facing many of their cities. Urban flooding is more intensified by dramatic changes in the impervious area, in addition to heavy rainfall and extreme climatic events (Birhanu, *et al.*, 2016). High incidence of flooding could be attributed to climate change, reduction in percolation, poor environmental and infrastructure planning, poor governance, population explosion as well as rapid urbanization. The persistent migration of people from deprived areas, coupled with poor

governance has put unprecedented pressure on cities' resources and infrastructure (Odufuwa, *et al.*, 2012). From vulnerability perspective, Asia and the Pacific regions has had its fair share affecting the social and economic stability of the countries in the region, some of the worst case scenarios for example include China when in 1998 it suffered a devastating flood that affected 223 million people, killing 3,004 people and rendering 15 million people homeless. The economic loss was over US\$ 23 billion for that year (Amangabara and Obenade, 2015). Flooding has become a major hazard in Nigeria in recent years. It was estimated that Nigeria suffered combined losses of more than \$16.9b in damaged properties, oil production, agricultural and other losses due to flood events in 2012 alone (Oladokun and Proverbs, 2016). Increased flood events coupled with the lack of coping capacity and high levels of vulnerability of the people have continued to put many lives and properties at risk (Oladokun and Proverbs, 2016).

According to Alaghmand, *et al.*, (2010), there is a direct relationship between urbanization and hydrological characteristics such as infiltration, runoff frequency and flood depth in an urban area. They stated that increased urbanization increases floods, both in frequency and magnitude. The effects of urbanization and global warming on floods will increase in future (due to more urbanization to accommodate increased population in cities and rises in greenhouse gas emissions) (IPCC 2013; Rashetnia, 2016). Considering this, flood vulnerability assessment is essential to identify high risk areas and develop cost-effective flood mitigation and/or adaptation strategies. The goal of vulnerability assessment is to understand how a system will be affected by floods. Examples of possible systems could include physical structures such as houses or bridges that could be damaged or destroyed, a business or service whose supply chain could face interruption, or a community that could suffer fatalities, property losses, and negative health impacts in the aftermath of a flood.

The vulnerability of the built environment to floods is referred to as physical vulnerability. An important consequence of flooding is the damage to physical structures such as buildings, bridges, roads, and public utilities. According to the World Bank (2014), 'physical vulnerability encompasses the structural and non-structural damage to buildings or building components or other infrastructure'. These damages could be direct, in terms of gradual and consistent deterioration of buildings and other infrastructure (WB, 2014; Fatemi, *et al.*, 2020). Flood damage on buildings are often extensive and deteriorates their material compositions and structures as well as their function (Blanco and Schanze, 2012). The IPCC thus indicates that vulnerability encompasses a variety of concepts including sensitivity or susceptibility to harm and lack of capacity to cope and adapt. Therefore, information on the elements at risk (e.g., people; built environment; eco-systems), the exposure (e.g. proximity to the river; elevation of the area; frequency, duration, and depth of floods), and areas' susceptibility (e.g. socio-economic capacities, coping, and recovery) are essential for assessing physical damage due to flood (Yankson, *et al.*, 2017; Fatemi, *et al.*, 2020). In Nigeria, several studies have been carried out on vulnerability assessment using various techniques including Remote Sensing and GIS techniques (Happy, *et al.*, 2014; Eguaroje, *et al.*, 2015, Akukwe and Ogbodo, 2015; Amangabara & Obenade, 2015; Dalil *et al.*, 2015; Gelleh *et al.*, 2016; Nkwunonwo 2017; Samuel *et al.*, 2017 and Chigbu *et al.*, 2018) to ascertain the vulnerability level while a study conducted by Ugwu (2017) was able to examine the effects of incidence of flooding on property value in Port Harcourt metropolis, Rivers State. None of these studies assessed vulnerability in relation to developed properties. Therefore, this study is assessing the flood vulnerability levels of developed properties in Port Harcourt Metropolis, Rivers State, Nigeria.

## **Materials and Methods**

The study was carried out in Port Harcourt Metropolis., Rivers State, Nigeria It is located on latitude 04° 48' and 05° 00'N of the Equator and longitude 06° 55'and 07° 10'E of the Greenwich Meridian (Figure 1). Port Harcourt Metropolis covers an area of 387.261000 (sq.km). Port Harcourt is the Capital City of Rivers State of Nigeria. The study area has a tropical monsoon climate with mean annual temperature of 28°C and annual rainfall over 2500mm. The relative humidity is very high with an annual mean of 85%. The relief is generally lowland which has an average of elevation between 20m and 30m above sea level and the geology of the area comprises basically of alluvial sedimentary basin and basement complex. The vegetation found in this area includes raffia palms, thick mangrove forest and light rain forest. The soil is usually sandy or sandy loam underlain by a layer of impervious pan and is always leached due to the heavy rainfall. The study area is well drained with both fresh and salt water. The salt water is caused by the intrusion of sea water inland, thereby making the water slightly salty.

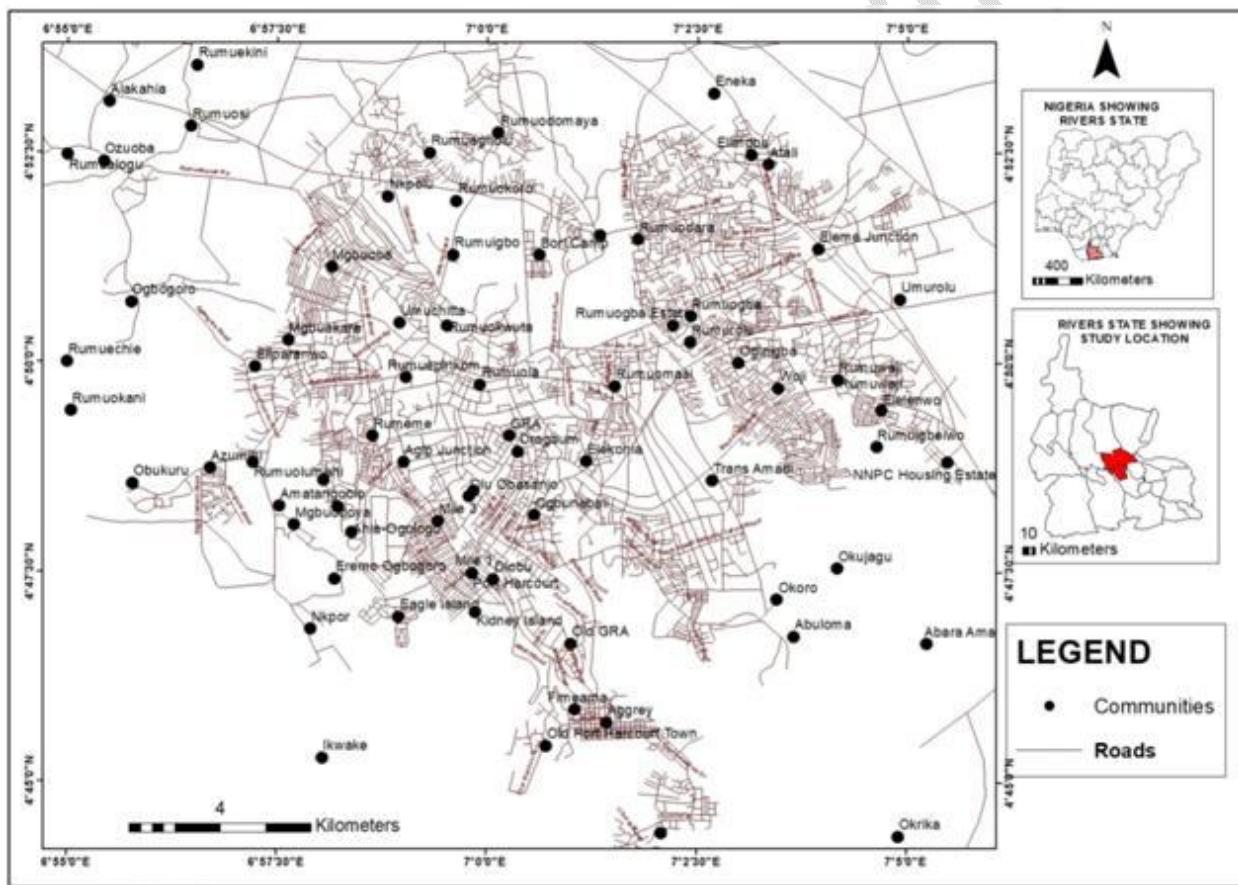


Figure 1. Port Harcourt Metropolis

This study employed the use of both primary and secondary data. The primary data included Landuse map of the capital cities acquired from the Landsat Imagery of 30m x 30m and the drainage network, road network, and communities location extracted from the topographic map of 1: 100,000 scale of the study area; and soil map derived from the FAO website. The landsat imagery of 2020 with path and row of 188 and 057, and sensor ID of OLI/TIRS was collected for

the cities. The bands of landsat satellite imageries of each of the study locations were combined to have a composite imagery. The shapefile of each of the study location was used to clip the composite imagery to have a definite boundary of the study area. However, topographical map was geo-referenced to world coordinate system (WGS 84) in ArcGIS 10.7 from where the communities and river networks were obtained while the SRTM imagery was used to determine elevation of the each of the study locations. The soil map in was generated from the World Soil Map created by FAO/UNESCO (1973). The soil map supplied information on the soil dominant composition, the textural class (1=Coarse, 2=Medium/Fine, 3=Fine). The information of developed properties was obtained from the Open Street Map website(<https://www.openstreetmap.org/#map=11/4.9008/6.0796&layers=N>). Thereafter Spatial Manager Desktop software was used to extract and convert the data into shapefile and later imported into the ArcGIS environment for further analysis.

This study made use of ranking methods of the vulnerability factors which is embedded in Analytical Hierarchy Process (AHP) proposed by Saaty (1980) and cited in Saaty (2008). AHP is a multi-criteria decision making technique, which provides a systematic approach for assessing and integrating the impacts of various factors, involving several levels of dependent or independent, qualitative as well as quantitative information (Bapalu and Sinha, 2006). Ranking method was adopted because the criterion weights are usually determined in the consultation process with choice or decision makers which resulted in ratio value assigned to every criterion map (Lawal et al., 2011). In ranking method, every criterion under consideration is ranked in the order of the decision maker's preference. To generate criterion values for each evaluation unit, each factor was weighted according to the estimated significance for causing flood.

The landuse/land cover map was generated from the satellite imageries. Supervised classification technique was adopted with the use of MAXLIKE (Maximum Likelihood Algorithm) module to classify the imagery in the area. The area in square kilometer of each landuse type was calculated. The drainage network which determines the proximity to river channels and communities were mapped from the topographical map. These geographic features were digitized and captured as vector data in ArcGIS 10.7. The elevation map was derived from the STRM of 2020. The boundary of each of the study locations was used to clip the imagery to have the exact delineation of the boundary. The landuse, proximity to river channels (drainage), elevation and soil texture maps were reclassified into high vulnerability, moderate vulnerability, and low vulnerability. The landuse, proximity to river channels (drainage), elevation maps and soil texture were reclassified to determine the vulnerability across the cities of the region. Spatial query in ArcGIS 10.7 was used to determine the vulnerability levels that each developed properties fall into and also used to determine the spatial extent of each vulnerability level which were categorised into high vulnerability, moderate vulnerability, and low vulnerability. Descriptive statistics involving frequencies and percentages were used in the data analysis. Data were presented in tables and maps.

## **Results**

### **Vulnerability Assessment of Developed Properties in Port Harcourt**

The analysis presented in Figure 2, Figure 3 and Table 1 reveal the landuse pattern of Port Harcourt Metropolis, landuse vulnerability level to flood and the spatial extent covered by each landuse class. The analysis revealed that five major landuse patterns were identified in Port Harcourt and these included waterbody, swamp forest/riparian vegetation, built up area, thick vegetation and farmlands/sparse vegetation. The analysis reveals that waterbody occupied 24.71 sq km (5.39%), swamp forest/riparian vegetation occupied 64.06 sq km (13.98%) while the built



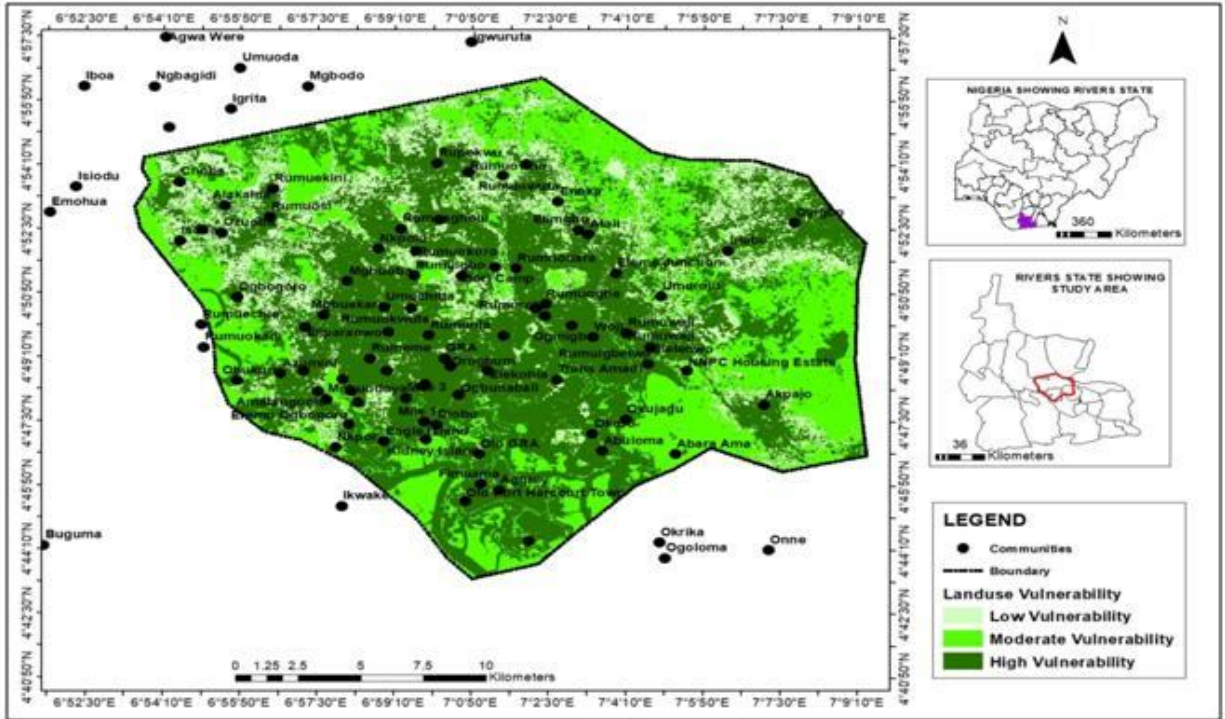


Figure 3: Landuse Vulnerability to Flood in Port Harcourt

Table 1: Landuse/Landcover Vulnerability Levels to Flood in Port Harcourt

S/n	Landuse	Spatial Extent (Km <sup>2</sup> )	Percentage (%)	Vulnerability Assigned Values	Vulnerability Levels
1	Waterbody	24.71	5.39	3	High Vulnerability
2	Swamp Forest/Riparian	64.06	13.98	2	Moderate Vulnerability
3	Built Up Area	216.91	47.35	3	High Vulnerability
4	Thick Vegetation	73.94	16.14	1	Low Vulnerability
5	Farmlands/Sparse Vegetation	78.51	17.14	2	Moderate Vulnerability
	<b>Total</b>	458.13	100.00		

**Proximity to River Channel (Drainage) Vulnerability Map**

The analysis on proximity to active river channels is presented in Figure 4, Figure 5, Figure 6 and Table 2. It is shown that the three scenarios considered were 500m, 1000m and 1500m radius from the center of the river. The areal extent covered by the distance of 500m which was categorized as the high vulnerability was 115.01 sq km (47.73 %), 72.55 sq km (30.11%) were occupied by 1000m distance from the active river channels and this was categorized to be moderate vulnerability while the low vulnerability which was 1500m distance from the river occupied 53.40 sq km (22.16%). With this analysis, it is regarded that the highly vulnerable had almost half of the total area occupied by the buffers and it was even found as the highest among other levels based on the proximity to active river channels.

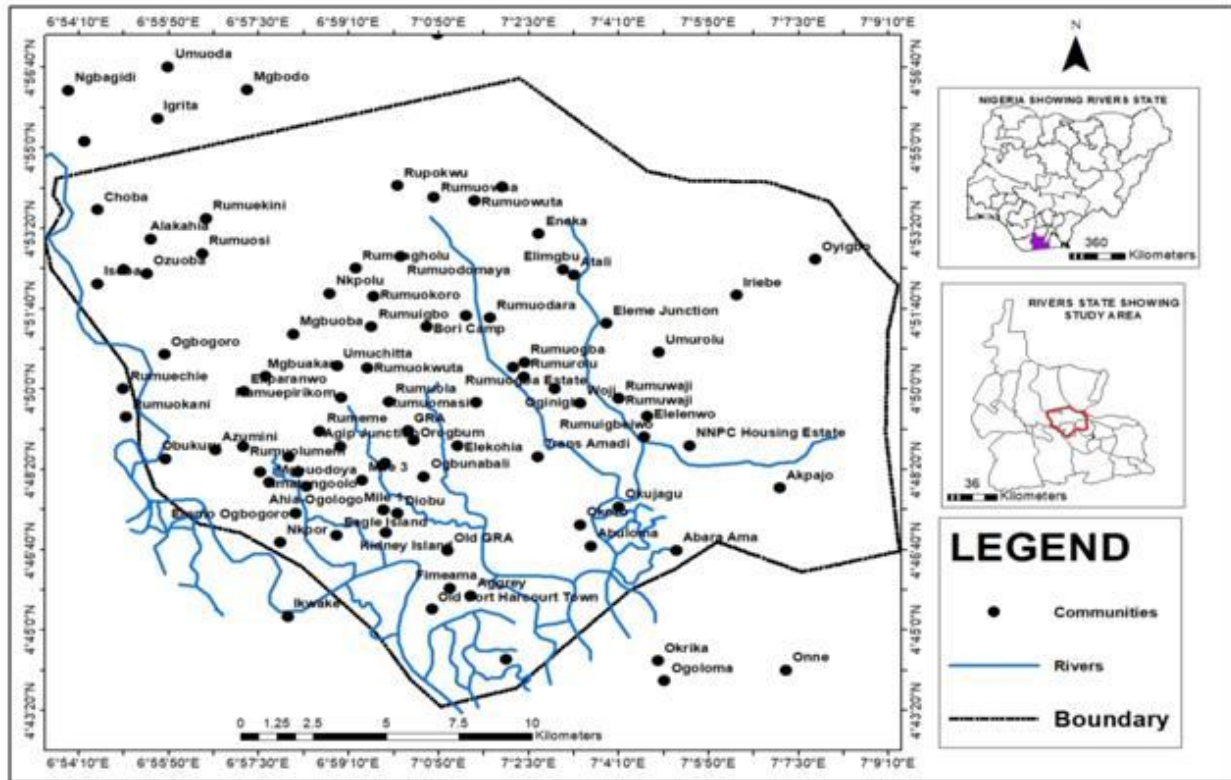


Figure 4: Active River Channels in Port Harcourt

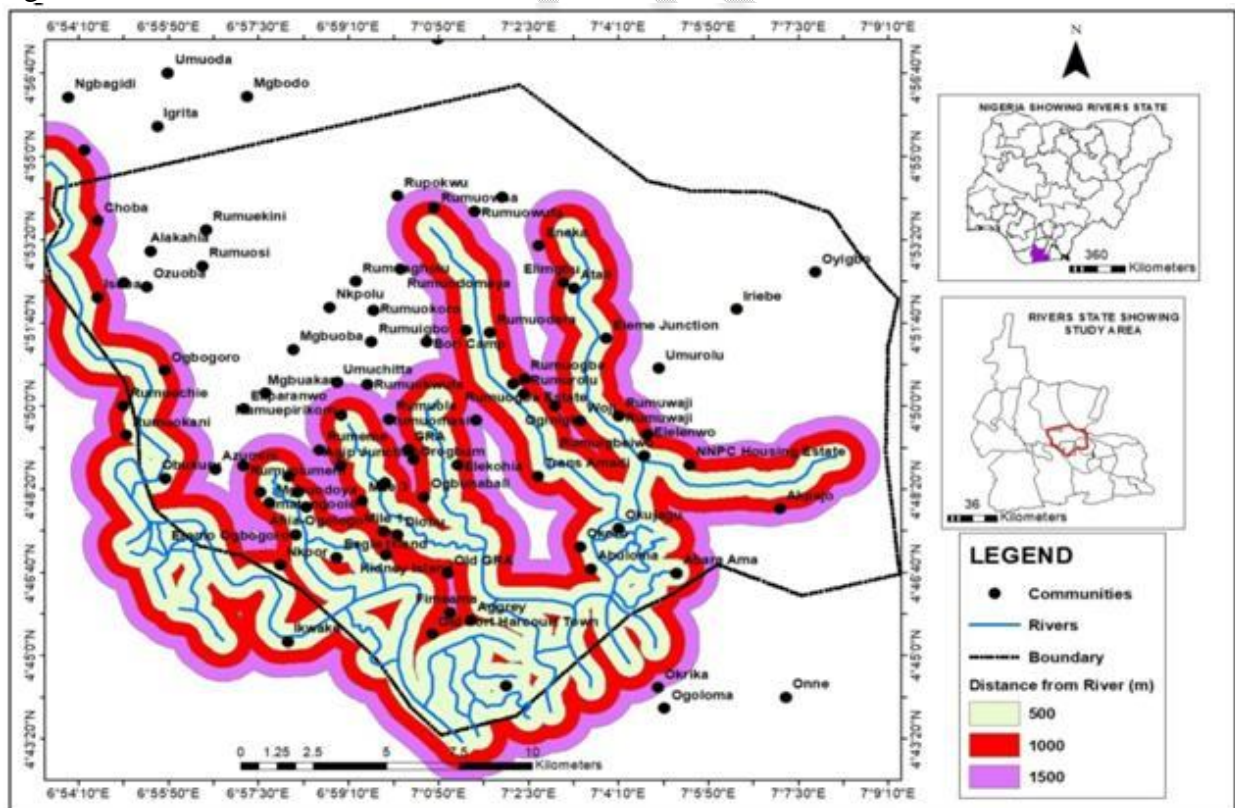


Figure 5: Buffering Analysis for Active River Channels in Port Harcourt

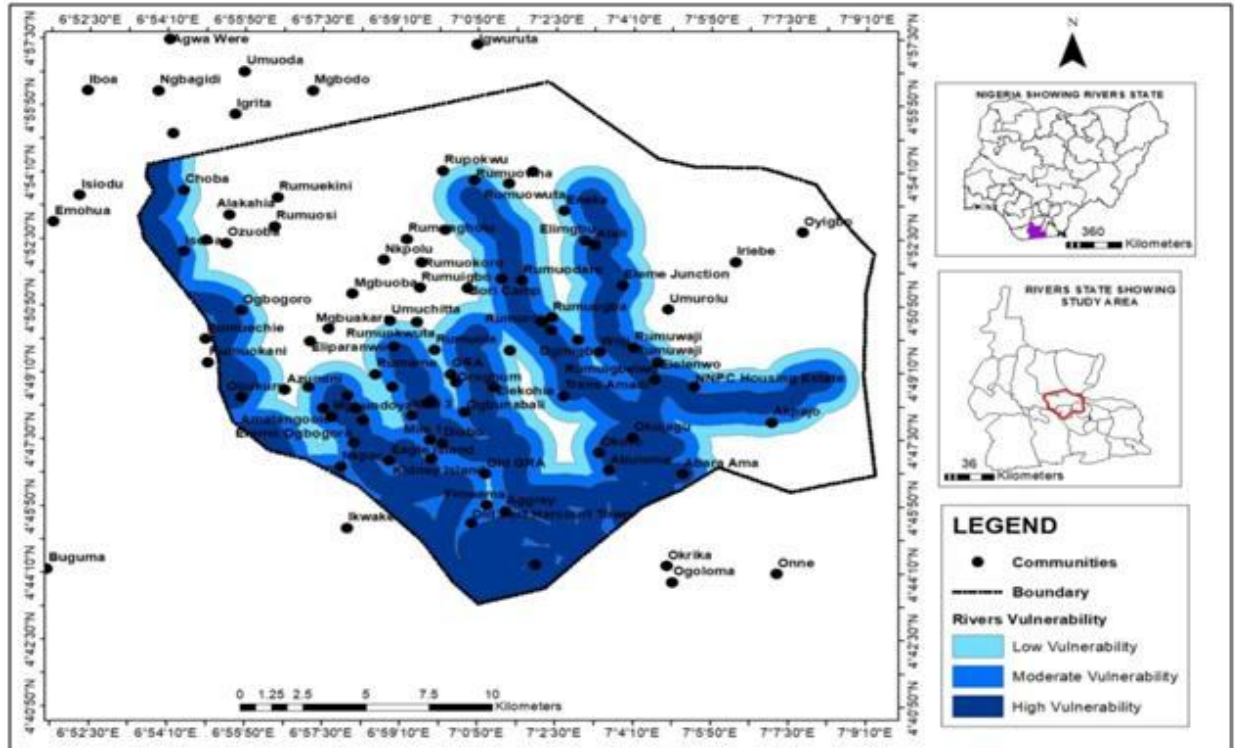


Figure 6: Proximity to River Active Channel Vulnerability to Flood in Port Harcourt

Table 2. Proximity to Active River Channel

S/n	Drainage Buffer (m)	Spatial Extent (km <sup>2</sup> )	Percentage (%)	Vulnerability Assigned Values	Vulnerability Levels
1	500	115.01	47.73	3	High Vulnerability
2	1000	72.553	30.11	2	Moderate Vulnerability
3	1500	53.399	22.16	1	Low Vulnerability
	<b>Total</b>	240.96	100.00		

### Soil Texture Vulnerability Map in Port Harcourt

The soil texture and their vulnerability to flood is displayed in Figure 7, Figure 8 and Table 2. It is shown that the major soil texture identified are coarse, and fine and the spatial coverage of the highly vulnerable part of the study location was 87.15% while 12.85% was left with moderate vulnerability to flood. Meanwhile, coarse had spatial coverage of 342.13 sq km (74.67%), and fine texture had 58.87 sq km (12.85%).

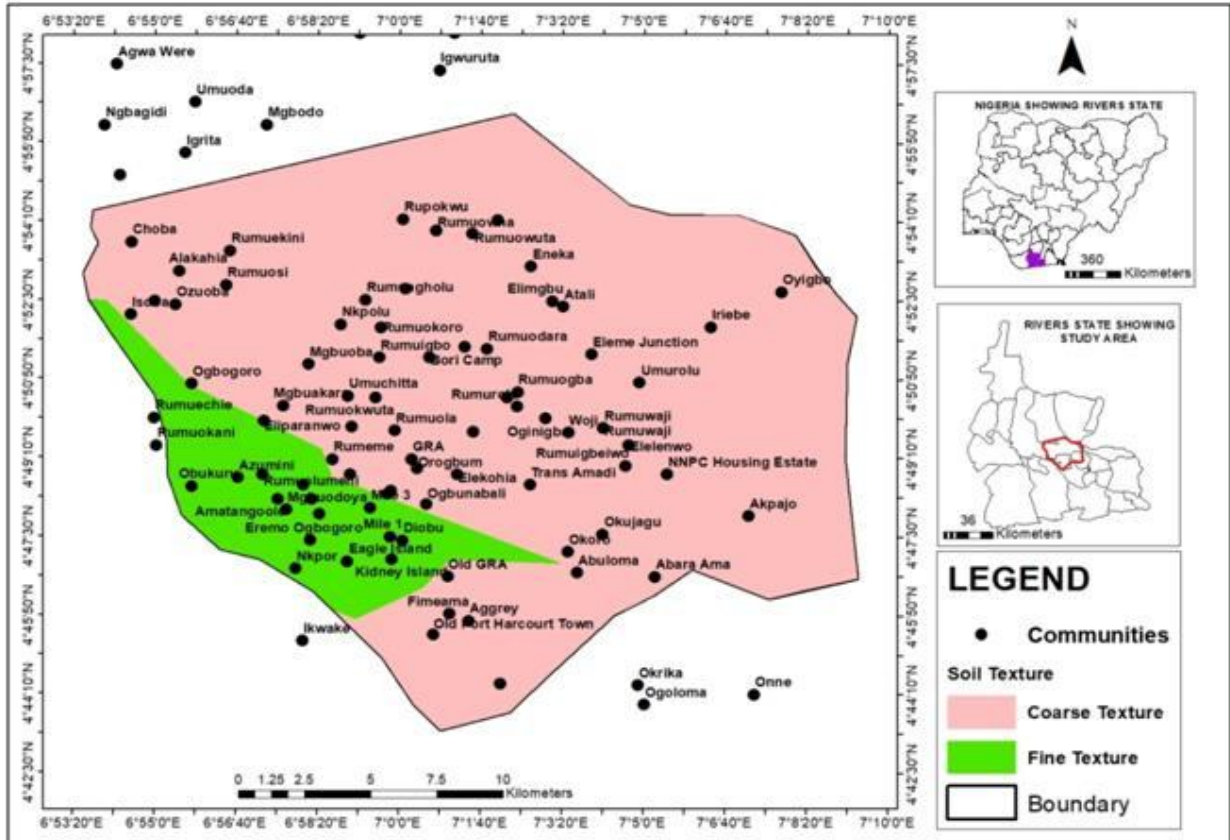


Figure 7: Soil Texture of Port Harcourt

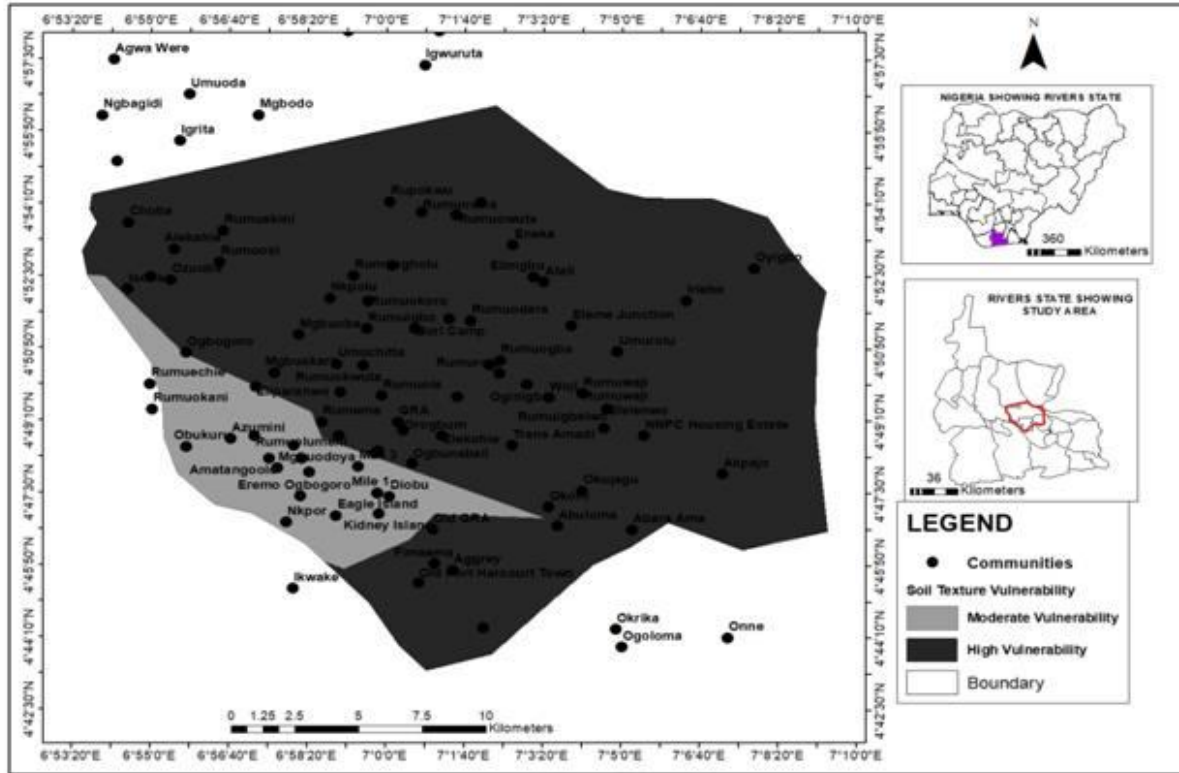


Figure 8: Soil Texture Vulnerability to Flood in Port Harcourt

List 1: Soil Texture and Its Vulnerability to Flood in Port Harcourt

S/n	Soil texture	Spatial Extent (Km <sup>2</sup> )	Percentage (%)	Vulnerability Assigned Values	Vulnerability Levels
1	Coarse Texture	342.13	74.67	3	High Vulnerability
2	Fine Texture	58.872	12.85	2	Moderate Vulnerability
3	Water	57.197	12.48	3	High Vulnerability
	<b>Total</b>	458.2	100.00		

### Flood Vulnerability Map based on Elevation

The analysis on the elevation of Port Harcourt is displayed in Figure 9, Figure 10 and Table 3. It was discovered that the high vulnerability due to elevation covered spatial extent of 30.9 sq km (7.77%) while for moderate ranging from 8.01m to 24m had a spatial extent of 323.41 sq km (81.28%) and spatial extent of low vulnerability was 43.62 sq km (10.96%).

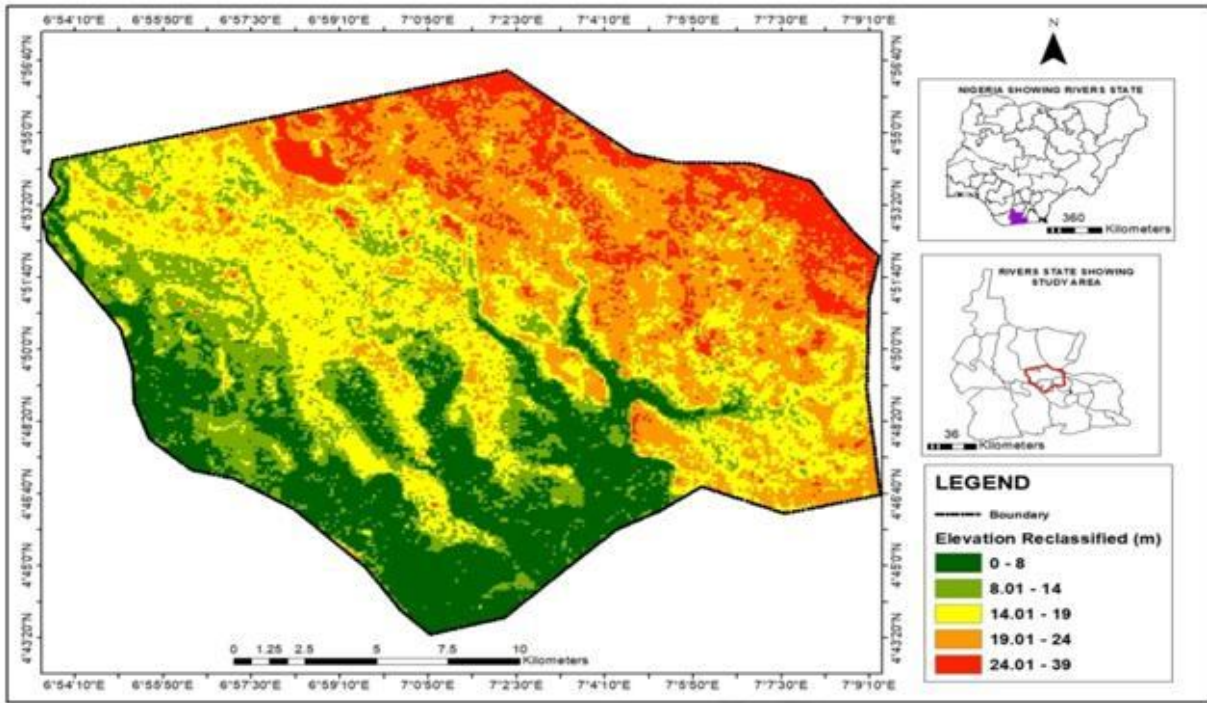


Figure 9: Elevation of Port Harcourt

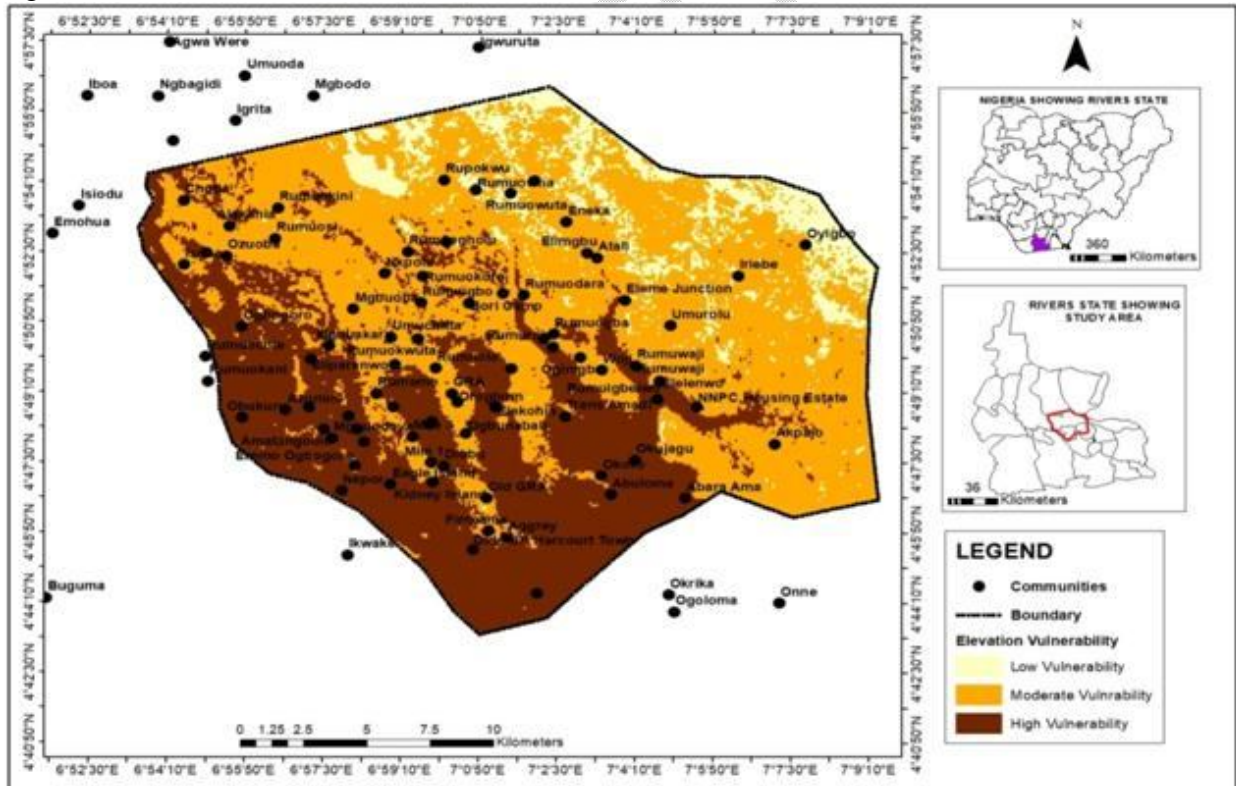


Figure 10: Elevation Vulnerability to Flood in Port Harcourt

Table 3: Analysis of Elevation Levels and Vulnerability to Flood in Port Harcourt

S/n	Elevation Level (m)	Spatial Extent (Km <sup>2</sup> )	Percentage (%)	Vulnerability Assigned Values	Vulnerability Levels
1	0-8	30.9	7.77	3	High Vulnerability
2	8.01-14	73.32	18.43	2	Moderate Vulnerability
3	14.01-19	126.17	31.71	2	Moderate Vulnerability
4	19.01-24	123.92	31.14	2	Moderate Vulnerability
5	24.01-39	43.62	10.96	1	Low Vulnerability
	Total	397.93	100.00		

### Flood Vulnerability Map and Developed Properties Vulnerability Levels

The flood vulnerability levels in Port Harcourt is shown in Figure 11 and Table 4 whereby it is found that the low flood vulnerability levels occupied 60.78 sq km (13.22%) while the moderate flood vulnerability occupied 259.72 sq km (56.51%) and high flood vulnerability level had a spatial extent of 139.14 sq km (30.27%). The analysis has revealed that majority of the part of Port Harcourt are under moderate flood vulnerability but despite this, some areas are still categorized as highly vulnerable to flood.

Furthermore, the flood vulnerability levels that developed properties belonged to are displayed in Figure 12 for the lowly vulnerable developed properties, Figure 13 for the moderately vulnerable developed properties and Figure 14 for the highly vulnerable developed properties. The analysis contained in Table 5 reveals that 3977 (9.04%) of the total developed properties in Port Harcourt had a low flood vulnerability, 34754 (78.96%) had a moderate flood vulnerability while 5283 (12.00%) had a high flood vulnerability. The implication is that more than 80% of the developed properties identified in Port Harcourt are liable to be vulnerable with at least moderate flood.

Table 4: Flood Vulnerability Levels in Port Harcourt

S/n	Vulnerability Level	Spatial Extent (Km <sup>2</sup> )	Percentage (%)
1	Low	60.78	13.22
2	Moderate	259.72	56.51
3	High	139.14	30.27
	Total	459.64	100.00

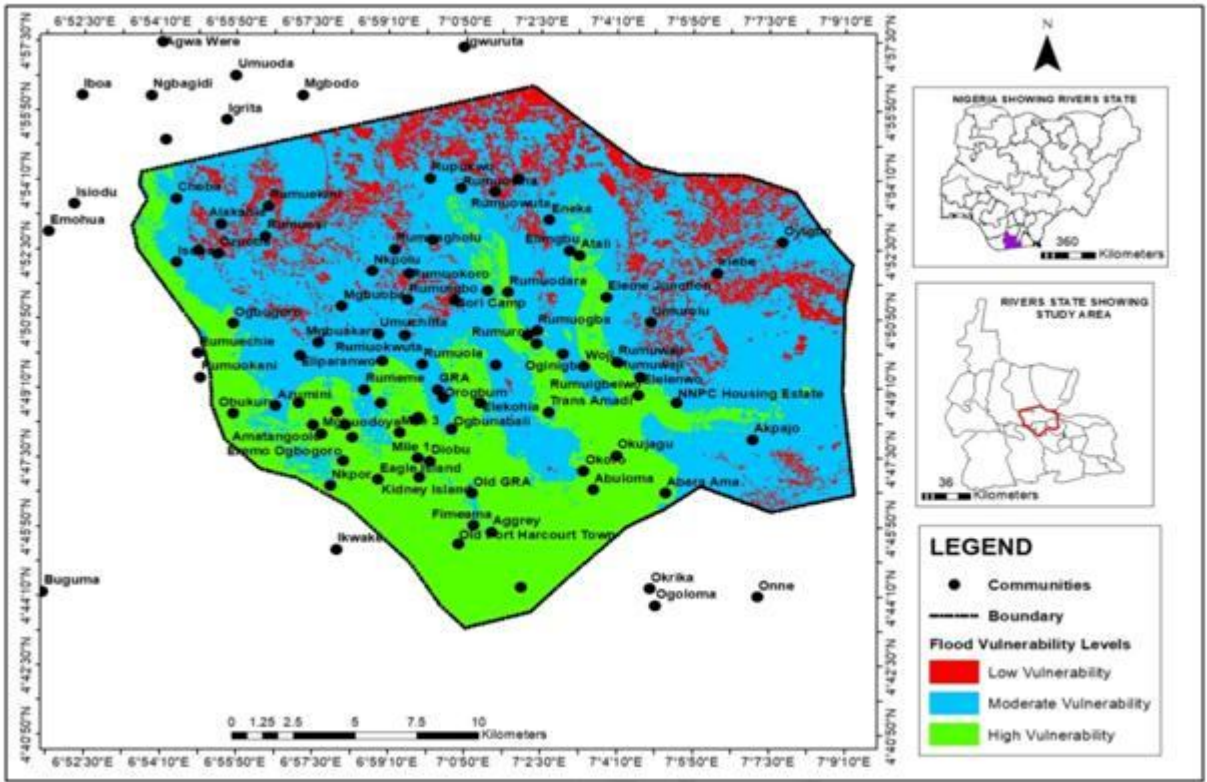


Figure 11: Flood Vulnerability in Port Harcourt

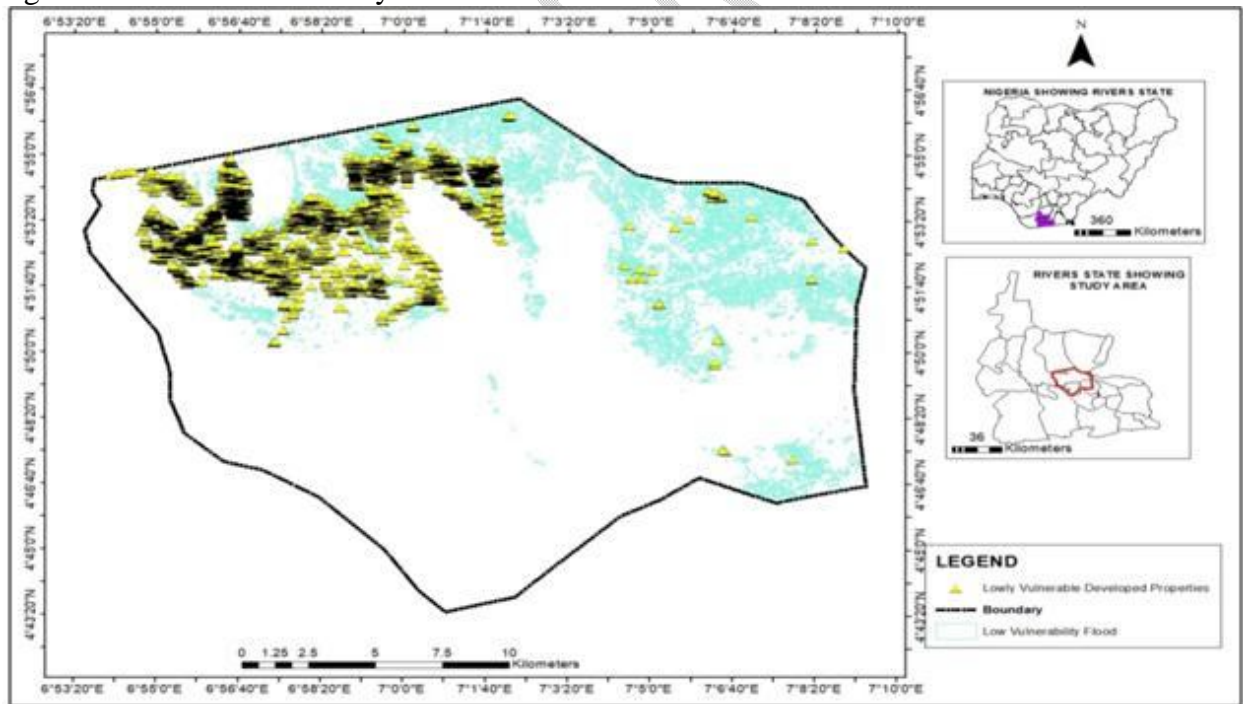


Figure 12: Developed Properties of Low Flood Vulnerability in Port Harcourt

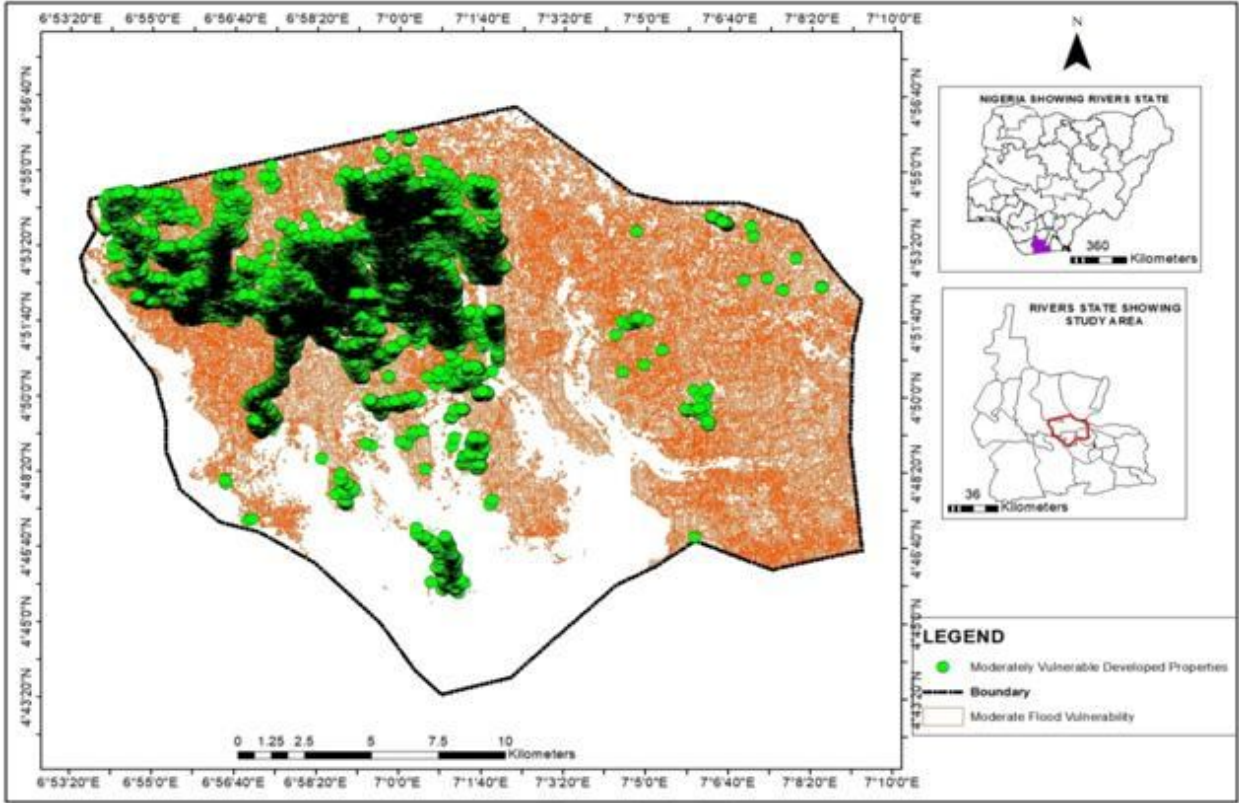


Figure 13: Developed Properties of Moderate Flood Vulnerability in Port Harcourt

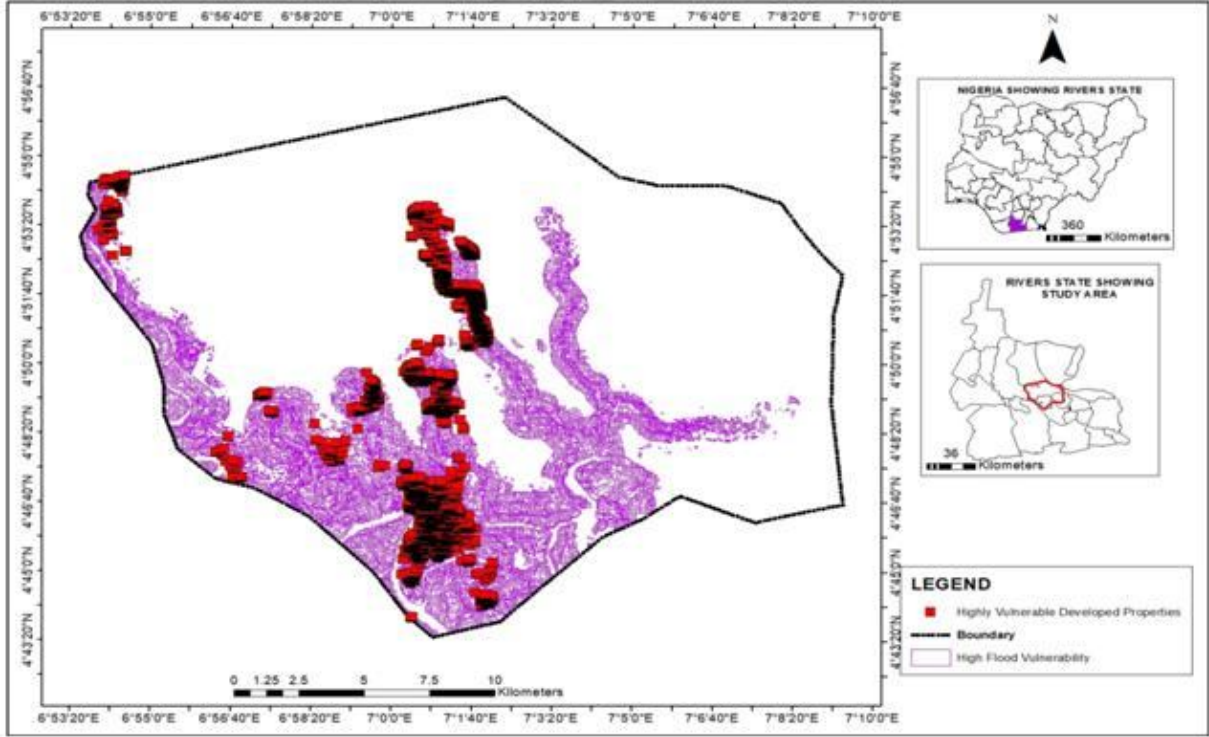


Figure 14: Developed Properties of High Flood Vulnerability in Port Harcourt

**Table 5: Developed Properties Vulnerability Levels to Flood in Port Harcourt**

SN	Vulnerability	Number of Developed Properties	Percentage (%)
1	Low	3977	9.04
2	Moderate	34754	78.96
3	High	5283	12.00
	Total	44014	100.00

**Discussion of Findings**

The flood vulnerability assessment of developed building showed that many of the developed are faced with moderate flood vulnerability and this may slightly affect their potential use for human kind. Floods are one of the common natural phenomena that can cause a huge danger to people and building objects located in flood plains. The particularly severe effects of such disasters are felt in heavily urbanized area (Wilk, 2018). As a result of an increase in the flow velocity of flood, the ground erodes, especially intense in places where obstacles are encountered, which are also construction objects. The erosion of foundations is a frequent cause of the collapse or emergency states of buildings (Wilk, 2018). Similarly, Park et al., (2021) reported that urbanization on floodplains results in a rise in property values, therefore increasing potential flood damage. Because flood damage is inevitable in floodplains, settling and investing in the floodplain contributes to a higher risk of flood damage. There are other buildings that are found in low and high flood vulnerable area, although they are lower in number than the moderately vulnerable buildings. This is in agreement to the findings of Park et al. (2021) whereby the fuzzy values revealed the vulnerability level of each building with regard to flood damage split into stages which included very low vulnerability, low vulnerability, medium vulnerability, high vulnerability and very high vulnerability. Kropp (2012) buttressed that the risk of flooding has always been present for buildings close to rivers or coasts, but it has been growing in recent years. Major floods all over the world over the past decade have shown that flooding is a significant environmental hazard.

**Conclusion and Recommendations**

The study can be concluded that the number of developed properties in the Port Harcourt Metropolis varied significantly based on different flood vulnerability levels and more of them were found within the moderate vulnerability levels. Based on the findings, the study recommended that all the developed properties lying in the high flood vulnerability level should be relocated to better locations or at least conform to ways of guiding against the effect of flood on the developed properties; and also periodic enlightenment of the effect of flood to the public would help a lot of preventing people from constructing their house in the highly and moderately flood vulnerable levels.

**References**

- Abam, T. K. S. (2001). Regional hydrological research perspectives in the Niger Delta. *Hydrological Science*, 46:13–25.
- Akukwe T.I. and Ogbodo C. (2015): Spatial Analysis of Vulnerability to Flooding in Port Harcourt Metropolis, Nigeria. *SAGE Open*: 1–19 DOI: 10.1177/2158244015575558.
- Akukwe, T. I. and Ogbodo, C. (2015). Spatial analysis of vulnerability to flooding in Port Harcourt metropolis, Nigeria. *Sage Open*, 1–19 DOI: 10.1177/2158244015575558 [www.sagepub.com](http://www.sagepub.com)

- Alaghmand, S., Abdullah, R., Abustan, I. & Vosoogh, B. 2010. 'GIS-based river flood hazard mapping in urban area (A case study in Kayu Ara River Basin, Malaysia)', *International Journal of Engineering and Technology*, vol. 2 (6), 488–500.
- Amangabara, G. T., and Obenade, M. (2015). Flood vulnerability assessment of Niger Delta states relative to 2012 flood disaster in Nigeria. *American Journal of Environmental Protection*, Vol. 3 (3), pp 76-83. Doi: 10.12691/env-3-3-3
- Amoako, C. (2018). Emerging grassroots resilience and flood responses in informal settlements in Accra, Ghana. *GeoJournal*, 83, 949–965.
- Asikan, N. (2008). *Research methodology in Behavioural science*. Lagos: Longman Nigeria Plc
- Babatunde, A. (2011). Evolving an efficient flood management strategy. 234Next.<<http://www.next.com/csp/cms/sites/Next/News/5711837-147/story.csp>>
- Balica S. F. (2007) Development and application of flood vulnerability indices for various spatial scales-master Thesis. UNESCO-IHE, Delft
- Balica S.F., Wright N.G. and F. van der Meulen (2012). A flood vulnerability index for coastal cities and its use in assessing climate change impacts, *Natural Hazards*, 64(1), 73-105.
- Birhanu, D., Kima H., Jangb, C and Parka, S. (2016). Flood risk and vulnerability of addis ababa city due to climate change and urbanization. *Procedia Engineering*, 154, 696-702
- Blaikie, P. (1994). *At risk : natural hazards, people's vulnerability, and disasters*. London; New York: Routledge.
- Blanco, A. and Schanze, J. (2012). Conceptual and methodological frameworks for large scale and high resolution analysis of the physical flood vulnerability of buildings. In *Comprehensive Flood Risk Management—Research for Policy and Practice*; Klijn, F., Schweckendiek, T., Eds.; CRC Press: Rotterdam, The Netherlands, pp. 591–598
- Chan A.P.C., Darko A., Ameyaw E.E., & Owusu-Manu D. (2016): Barriers affecting the adoption of green building technologies, *J. Manag. Eng.* [https://doi.org/10.1061/\(ASCE\)ME.1943-5479.0000507](https://doi.org/10.1061/(ASCE)ME.1943-5479.0000507)[CrossRef] [Google Scholar]
- Chigbu, N., Esther, M. and Ignatius, O. A. (2018). Assessment Of Flood Risk Of Cross River State Using Geographic Information System (GIS). FIG Congress 2018 Embracing our smart world where the continents connect: enhancing the geospatial maturity of societies Istanbul, Turkey, May 6–11, 2018
- Chukwu, D.U., Anaele, E.A., Omeje H.O. and Ohanu: I.B. (2019): Adopting green building constructions in developing countries through capacity building strategy: survey of Enugu State, Nigeria. *Sust. Build.* 4, 4
- Cutter, S. L. (1996). Vulnerability to environmental hazards. *Progress in Human Geography*, 20(4), 529-539.
- Dalil, M., Mohammad, N. H., Yamman, U. M., Husaini, A. and Mohammed, S. L. (2015). An assessment of flood vulnerability on physical development along drainage channels in Minna, Niger State, Nigeria. *African Journal of Environmental Science and Technology*, 9 (1), 38-46. DOI: 10.5897/AJEST2014.1815
- Eguaroje, O. E., Alaga, T. A., Ogbale, J. O., Omolere, S., Alwadood, J., Kolawole, I. S., Ajileye, O. O. (2015). Flood Vulnerability Assessment of Ibadan City, Oyo State, Nigeria. *World Environment*, Vol. 5(4): 149-159 DOI: 10.5923/j.env.20150504.03
- Fatemi, N., Okyere, S. A., Diko, S. K., Kita, M., Shimoda, M. and Matsubara, S. (2020). Physical vulnerability and local responses to flood damage in Peri-Urban Areas of Dhaka, Bangladesh. *Sustainability*, 12, 3957; doi:10.3390/su12103957

- Gelleh, I. D., Ibidun, O. A., Okeke, U. H. (2016). Flood vulnerability assessment in Lagos city using multi-criteria analysis. *Greener Journal of Environment Management and Public Safety*, Vol. 5 (2), pp. 024-032 DOI: <http://doi.org/10.15580/GJEMPS.2016.2.011316005>
- Hammond, M. J., A. S. Chen, S. Djordjević, D. Butler, & O. Mark. (2015): "Urban Flood Impact Assessment: A State-of-the-art Review." *Urban Water Journal* 12 (1): 14–29. doi:10.1080/1573062X.2013.857421.
- Happy, O. J., Makwe, E., Shuaib, M. H. (2014). Flood Vulnerability Assessment and Disaster Risk Reduction in Kubwa, Federal Capital Territory, Nigeria. *American Journal of Environmental Engineering and Science*. Vol. 1, No. 2, 2014, pp. 55-66.
- International Bank for Reconstruction and Development / The World Bank (2016). *Methods in Flood Hazard and Risk Assessment*. Technical Notes
- IPCC, 2013, Contribution of working group I to the fifth assessment report of the Intergovernmental panel on climate change, Cambridge University Press, Cambridge, United Kingdom and New York, NY, USA.
- Karmakar, S., Slobodan P. S, Angela P., Jordan B. (2010). An information system for risk-vulnerability assessment to flood. *Journal of Geographic Information System*, 2, 129-146 doi:10.4236/jgis.2010.23020
- Kropp, S. (2012), The Influence of Flooding on the Value of Real Estate, FIG Working Week, Germany TS06H- Valuation - Environmental Factors, 5729
- Lambley, D. & Cordery, I. (1997); The Effects of Catastrophic Flooding at Nyngan and Some Implications for Emergency Management, *Australian Journal of Emergency Management*, 12(2):5-9.
- Lavrakas, P. (2008). Encyclopaedia of survey research methods. 10.4135/9781412963947.
- Liverman, D. (1990). Vulnerability to Global Environmental Change" in Understanding Global Environmental Change: The Contributions of Risk Analysis and Management, eds. R.E. Kasperson, K. Dow, D. Golding & J.X. Kasperson, Clark University: The Earth Transformed Program, Worcester, MA, pp. 27-44.
- Marshall, R (2001): "Application of mitigation and its resolution within environmental impact assessment: an industrial perspective", *Impact Assessment and Project Appraisal*, 19 (3), 195-204.
- McDonald R. (2018). City Space Race. <https://www.centreforcities.org/reader/city-space-race-balancing-need-homes-offices-cities/geography-demand-residential-commercial-space/>  
Accessed on 11/03/2022
- Miceli R, Sotgiu I, & Settanni M (2008) Disaster preparedness and perception of flood risk: a study in an alpine valley in Italy. *J Environ Psychol*:164–17
- Mmom, P. C. and Aifesehi, P. E.E (2013). Vulnerability and resilience of niger delta coastal communities to flooding. *Journal Of Humanities And Social Science*, 10 (6), 27-33
- Musa, Z. N., Popescu, I. and Mynett, A. (2014). The Niger Delta's vulnerability to river floods due to sea level rise. *Natural Hazards Earth System Science*, 14, 3317–3329. doi:10.5194/nhess-14-3317-2014
- National Research Council (2015). Tying Flood Insurance to Flood Risk for Low-Lying Structures in the Floodplain. Washington, DC: The National Academies Press. <https://doi.org/10.17226/21720>.
- Nkwunonwo, U. C. (2017). Assessment of Social Vulnerability for Efficient Management of Urban Pluvial Flooding in the Lagos Metropolis of Nigeria. *Journal of Environmental Studies*, 3(1): 11

- Nwigwe C. and Emberga T.T. (2014). An Assessment of causes and effects of flood in Nigeria. *Standard Scientific Research and Essays*, 2(7):307-315.
- Nwilo, P. C. and Badejo, O. T. (2007). Impacts of oil spills along the Nigerian coast. *The Association for Environmental Health and Sciences*.
- Odufuwa, B. O., Adedeji, O. H., Oladesu, J. O. and Bongwa, A. (2012). Floods of fury in Nigerian Cities. *Journal of Sustainable Development*; 5 (7), 69-79. doi:10.5539/jsd.v5n7p69
- Ofem, B. (2012). A review of the criteria for defining urban area in Nigeria. *Journal of Human Ecology*, 37(3).
- Okhakhu, P. A. (2013). Urban Climate and the Challenges of Tropical Cities'. *Benin Journal of Social Sciences*, 21 (1).
- Okhakhu, P. A. (2014). Assessment of environmental and human challenges in the Niger-Delta region of Nigeria. *Journal of Environment and Earth Science*, 4 (23), 27-36
- Oladokun, V. O and Proverbs, D. (2016). Flood risk management in Nigeria: A review of the challenges and opportunities. *International Journal of Safety and Security Engineering*, 6 (3), 485–497
- Orimoogunje O.O.I., Fashae O.A., Oke T.O, & Akinwumiju A.S. (2016). Flood Vulnerability in a Part of Southwestern Nigeria. *Acad. J. Environ. Sci.*4(3): 055-061.
- Oyegun, C. U. (1993). Land degradation and the costal environment of Nigeria. *CATENA*, 20 (3), 215-225
- Oyegun, C.U. (2003). *Essentials of social and environmental research*. Port Harcourt, Nigeria: University of Port Harcourt Press.
- Park, K.; Choi, S.-H.; & Yu, I. (2021). Risk Type Analysis of Building on Urban Flood Damage. *Water*,13:1-17. <https://doi.org/10.3390/w13182505>
- Pelling M et al (2004) Reducing disaster risk a challenge for development. United Nations Development Programme-Bureau for Crisis Prevention and Recovery. doi:10.1007/s003450050172
- Rashetnia, S. (2016). *Flood vulnerability assessment by applying a fuzzy logic method: A case study from Melbourne*. Unpublished Msc. Thesis. Victoria University, Melbourne, Australia.
- Renaud, F. G., Birkmann, J., Damm, M., Gallopín, G. C. (2010). Understanding multiple thresholds of coupled social–ecological systems exposed to natural hazards as external shocks. *Natural Hazards*, 55, 749–763.
- Roy, E.; Rousselle, J.; & Lacroix, J.(2003). Flood damage reduction program (FDRP) in quebec: Case study of the Chaudiere River. *Nat. Hazards*, 28:387–405.
- Samuel, K. J., Yakubu, S., Ologunorisa, T. E. and Kola-Olusanya, A. (2017). A post-disaster assessment of riverine communities impacted by a severe flooding event. *Ghana Journal of Geography*, 9 (1), 17–41
- Tee, T. H. and Nifa, F. A. A. (2017). Flood mitigation in disaster management: a critical literature review, *SV*, 1098- 1109
- Turner, B. L, Kasperson, R. E, Matson, P. A, Mccarthy, J. J, Corell, L, & Christensen, R. W. L, et al. (2003). A framework for vulnerability analysis in sustainability science. *Proceedings of the National Academy of Sciences of the United States of America*.
- Ugwu, M. O. (2017). Effects of incidence of flooding on property value in Port Harcourt metropolis, Rivers State. Unpublished Msc. Thesis, University of Port Harcourt.
- Ukiwo, U. (2009). Violence, identity mobilization and reimagining of Biafra. *Africa Development*, 34, 9-30. 10.4314/ad.v34i1.57353.

- Ukoli, M. K (2005). Environmental Factors in the Management of the Oil and Gas Industry in Nigeria. Retrieved from [www.cenbank.org](http://www.cenbank.org).
- United Nations Development Programme (UNDP). (2006). Niger Delta human development report. Lagos (Nigeria): United Nations Development Programme.
- Wasten, C. J. V. (2019). Vulnerability. Available online: <http://www.charim.net/methodology/53>
- Werritty A, Houston D, Ball T, Tavendale A, & Black A (2007): Exploring the Social Impacts of Flood Risk and Flooding in Scotland. Scott. Exec. Soc. Res. Blackwell Pub. Edinburgh. 85-90.
- Westen, C. J. V. (2013). Remote sensing and GIS for natural hazards assessment and disaster risk management. *Treatise Geomorphology*, 3, 259–298.
- Wilk K. (2018): Hazards for buildings and structures caused by flood conditions. E3S Web of Conferences 45, 00101, 1-8. <https://doi.org/10.1051/e3sconf/20184500101>
- Wisner, B., Blaikie, P., Cannon, T. & Davis, I. (2004) At Risk: Natural Hazards, People's Vulnerability and Disasters, 2th edn, Routledge, London.
- World Bank (2014). The Caribbean Handbook for Risk Information Management (CHARIM); EU-funded ACP-EU Natural Disaster Risk Reduction Program, Ed.;World Bank (WB):Washington, DC, USA, 2014.
- Yankson, P. W. K., Owusu, A. B., Owusu, G.; Boakye-Danquah, J., Tetteh, J. D. (2017). Assessment of coastal communities' vulnerability to floods using indicator-based approach: A case study of Greater Accra Metropolitan Area, Ghana. *Natural Hazards*, 89, 661–689.