

# RESIN INFILTRATION TECHNIQUE-A MICROINVASIVE TREATMENT APPROACH FOR WHITE SPOT LESIONS

## ABSTRACT

White spot lesions are defined as surface and subsurface demineralisation of enamel without formation of a cavity. These lesions have always been an esthetic concern for patients. There are different treatment options for these lesions. Recently a new microinvasive technique have been introduced for the treatment of WLS, by infiltrating the lesions with a low viscosity resin. This technique is simple, painless and improves esthetics. This case report explains the ultra conservative method of treating white spots using resin material-ICON. The technique relies on the infiltration concept and helps treat white spot lesions on proximal regions and smooth surfaces.

*Keywords – white spot lesions, resin infiltration, microinvasive, DMG Icon*

## INTRODUCTION

Dental caries is one of the most common diseases of the hard tissues of teeth. Usually the first sign of dental caries is a white spot on the enamel surface without the formation of a cavity. These lesions are referred to as white spots and are defined as surface and subsurface demineralisation of enamel. They are more porous than the surrounding enamel and appears more opaque due to the differences in refraction of light compared to the sound enamel.[1,2,3]

Etiological factors include plaque accumulation around orthodontic brackets, poor oral hygiene, fluorosis, developmental defects, molar incisor hypomineralisation, traumatic hypomineralisation.[1]. These lesions may present esthetic problems as well as the progression of demineralisation.

Remineralisation can stop the progression of white spot lesions. Remineralising agents like CPP ACP and Fluorides have been used to treat these lesions, but their action is limited to the surface of the lesion and they usually takes more time (.TAKES MORE TIME COMPARED TO WHOM? HOW LONG DOES IT TAKE?)[6,7]. Micro abrasion is a commonly used approach for white spot lesions. This technique, however, may cause the aggressive reduction of enamel as a function of the duration, intensity, and number of applications.[6,9,10]

Also, restorations with tooth reduction which is quite invasive, have been used considerably. However, most patients demanding treatment for white spots are children, adolescents, or young adults. The invasive procedures usually result in excessive sacrifice of tooth material, which accelerate the destruction of the tooth at an earlier age.[6,11]

Recently a new concept of resin infiltration was developed, which helps in arresting the incipient lesions by penetrating the low viscosity resin into the enamel and by obstructing the pathways for acid diffusion in the enamel. This technique also strengthens the enamel structure mechanically, thereby preventing breakdown of the enamel surface.[6,12,13]

This case report explains the ultraconservative approach of treating white spots using resin material-ICON. The technique relies on the infiltration concept and helps treat white spot lesions on proximal regions and smooth surfaces.

## CASE REPORT

An 8-year-old female patient was referred from the Department of Paediatric dentistry to the Department of Conservative Dentistry and Endodontics D A P M RV ( FULL TEXT) Dental college. Patient had white spot lesions on her right maxillary central incisor and lower right lateral incisor and left central incisor. She had undergone oral prophylaxis previously. The patient's mother was informed about various treatment options, and the most conservative approach, resin infiltration technique, was chosen.

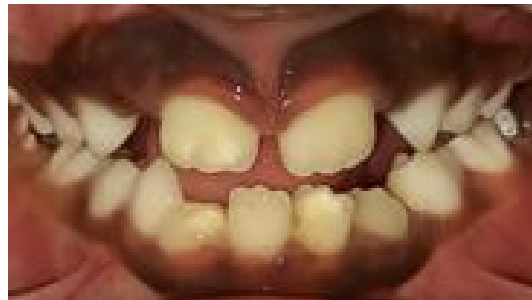
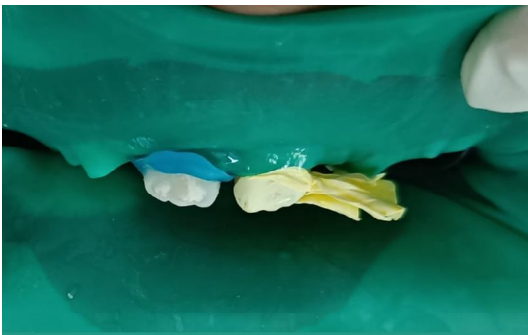


Fig 1. Preoperative view showing white spot lesions on upper right central incisor, lower right lateral incisor and left central incisor

After obtaining the informed consent , oral prophylaxis was performed, followed by polishing using rubber cup and prophylaxis paste. Isolation was achieved using a rubber dam (Dental Dam, Coltene, USA)(Fig 2)

Icon-Etch HCl 15% (Icon, Dental Milestones Guaranteed) was placed on the white spot lesion using an applicator tip for 2 min. (Fig 3a)The tooth surface was rinsed for 30 seconds to remove the acid, followed by drying with oil- and water-free air. The lesion was desiccated using Icon-dry (99% ethanol) for 30 seconds, which helped remove water from the pores of the lesion(Fig 3b). On visual examination, the white spot was still visible, hence, Icon-Etch and Icon-Dry were reapplied. Whitish opaque lesion diminished significantly after the reapplication, following which Icon-resin was applied on the lesion for three minutes(Fig 4a).The excess resin was removed using an applicator tip followed by interdental flossing.

Fig 2 Isolation using rubberdam and gingival barrier



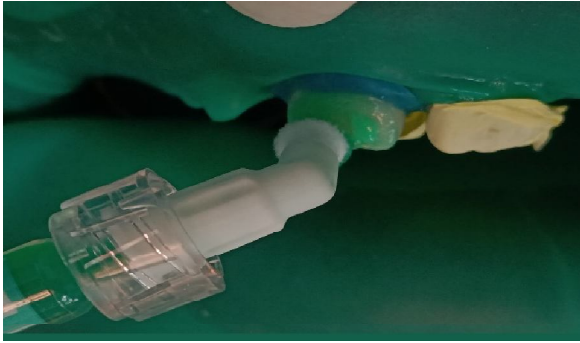


Fig 3a Etching using Icon etch HCl 15%



Fig 3b Application of Icon dry

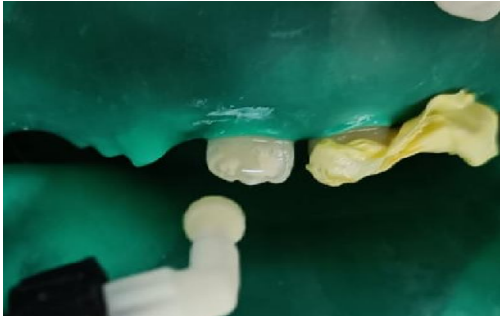


Fig 4a Application of resin infiltrant



Fig 4b Postoperative view showing significant reduction  
white spots

in

It was then light-cured for 40 seconds (WHAT EQUIPMENT WAS USED?). Icon resin was reapplied on the surface for one minute. Excess material was removed and light-cured for 40 seconds. Polishing was carried out using rubber cups and polishing paste.

The results of the treatment showed a satisfactory outcome as displayed in the post-operative photographs that were taken (Fig4b). There were no reports of gingival or soft tissue irritation, also no post-operative sensitivity or pain. The patient was overwhelmed and happy with the outcome and final result.

## **DISCUSSION**

White spots occur due to subsurface demineralization of enamel beneath the hyper-mineralized superficial enamel surface. Because of differences in refractive indices of enamel, water, and air, white spot lesions appear more prominent when the tooth is dried. The refractive index of sound enamel is 1.62. When enamel is demineralized, it becomes more porous. When the tooth is desiccated, water from these porosities is replaced by air (refractive index 1.0) and becomes more opaque compared to the sound enamel.[14,15]

However, when these micro-porosities get filled with resin infiltrant, their refractive index becomes 1.52 and the difference between the refractive indices of infiltrated lesion and enamel becomes negligible, and the lesions appear similar to the surrounding sound enamel.[6] Infiltration with resin helps mask the spot, even within the deeper regions of the lesion. The resin infiltration technique diminishes the white spots immediately compared to remineralizing agents. This technique is a more conservative approach, as it is less invasive than micro-abrasion, macro-abrasion, or restorations. Instead of removing the lesion, this technique helps to arrest incipient lesions by blocking the diffusion of acid into the enamel. Enamel also gets mechanically strengthened with the help of this resin infiltration.[12,16]

Etching helps to erode the superficial hyper mineralized enamel layer and expose the body of the lesion. The hyper-mineralized enamel on the surface is removed by the etchant which helps the resin infiltrate to the body of the lesion. In comparison to microabrasion which removes upto 360  $\mu\text{m}$  of demineralised enamel, etching with 15% HCl removes approximately 40  $\mu\text{m}$  of the hypermineralized surface layer, allowing the resin to penetrate in to the lesion.[17,18] Water present in the lesion's porosities is removed with the help of 99% ethanol, which permits the infiltrant to penetrate the pores driven by capillary forces.[19]

The ICON infiltrant has low viscosity, high surface tension and low contact angle, which enables it to penetrate easily into enamel.[20] Compared with the other infiltrants, the Triethylene-glycol-dimethacrylate-resin infiltrant has shown deeper penetration. Resin is applied twice as there is a chance of shrinkage of the material after the first application, leading to the formation of spaces. The second application of resin helps to completely occlude these spaces.[16] The resin infiltration

technique is especially advantageous in the management of aesthetics of mild white spot lesions present post-orthodontic treatment. It can be used as an adjunctive therapeutic measure in the management of early caries lesions.

## **CONCLUSION**

Resin infiltration is a promising technique for masking the initial enamel white spot lesions and also inhibits their progression into deeper areas. The enamel's resistance is increased by hampering the demineralization process by sealing the micropores, and it is also a suitable method to arrest further caries. But the long-term color stability of this technique should be continuously evaluated with more clinical studies.

## **CONSENT.**

All authors declare that written informed consent was obtained from the patient (or other approved parties) for publication of this case report and accompanying images.

## **ETHICAL APPROVAL**

As per the international standard or university standard written ethical approval has been collected and preserved by the authors.

## **REFERENCE**

1. Saluja I, Pradeep S, Shetty N. Minimally invasive management of white spot lesion using resin infiltration technique: A case report. *Gulhane Med J.* 2022 Mar 1;64(1):120-2.
2. Marcenes W, Kassebaum NJ, Bernabé E, Flaxman A, Naghavi M, Lopez A, Murray CJ. Global burden of oral conditions in 1990-2010: a systematic analysis. *Journal of dental research.* 2013 Jul;92(7):592-7.
3. Richter AE, Arruda AO, Peters MC, Sohn W. Incidence of caries lesions among patients treated with comprehensive orthodontics. *American Journal of Orthodontics and Dentofacial Orthopedics.* 2011 May 1;139(5):657-64.
4. Alhamed M, Almalki F, Alselami A, Alotaibi T, Elkwehhy W. Effect of different remineralizing agents on the initial carious lesions—A comparative study. *The Saudi Dental Journal.* 2020 Dec 1;32(8):390-5.

5. Attal JP, Atlan A, Denis M, Vennat E, Tirlet G. White spots on enamel: treatment protocol by superficial or deep infiltration (part 2). *International Orthodontics*. 2014 Mar 1;12(1):1-31.
6. Kim S, KIM EY, JEONG TS, KIM JW. The evaluation of resin infiltration for masking labial enamel white spot lesions. *International journal of paediatric dentistry*. 2011 Jul;21(4):241-8.
7. Kang JS, Lee NY, Lee SH. Remineralization of incipient enamel caries lesion by CPP-ACP paste. *Journal of The Korean Academy of Pediatric Dentistry*. 2008 Feb 29;35(1):159-66.
8. Ardu S, Castioni NV, Benbachir-Hassani N, Krejci I. Minimally invasive treatment of white spot enamel lesions. *Quintessence international*. 2007;38(8):633-.
9. Croll TP, Bullock GA. Enamel microabrasion for removal of smooth surface decalcification lesions. *Journal of clinical orthodontics: JCO*. 1994 Jun;28(6):365-70.
10. Dalzell DP, Howes RI, Hubler PM. Microabrasion: effect of time, number of applications, and pressure on enamel loss. *Pediatric Dentistry*. 1995 May 1;17:207-.
11. Malterud MI. Minimally invasive restorative dentistry: a biomimetic approach. *PRACTICAL PROCEDURES AND AESTHETIC DENTISTRY*. 2006 Aug;18(7):409.
12. Meyer-Lueckel H, Paris S. Progression of artificial enamel caries lesions after infiltration with experimental light curing resins. *Caries research*. 2008;42(2):117-24.
13. Paris S, Meyer-Lueckel H, Cölfen H, Kielbassa AM. Resin infiltration of artificial enamel caries lesions with experimental light curing resins. *Dental materials journal*. 2007;26(4):582-8
14. Newbrun E, Brudevold F. Studies on the physical properties of fluorosed enamel—I: microradiographic studies. *Archives of Oral Biology*. 1960 May 1;2(1):15-IN1..

15. Fejerskov O, Yaeger JA, Thylstrup A. Microradiography of the effect of acute and chronic administration of fluoride on human and rat dentine and enamel. *Archives of Oral Biology*. 1979 Jan 1;24(2):123-30.
16. Robinson C, Brookes SJ, Kirkham J, Wood SR, Shore RC. In vitro studies of the penetration of adhesive resins into artificial caries-like lesions. *Caries research*. 2001;35(2):136-41.
17. Tong LS, Pang MK, Mok NY, King NM, Wei SH. The effects of etching, micro-abrasion, and bleaching on surface enamel. *Journal of dental research*. 1993 Jan;72(1):67-71.
18. Meyer-Lueckel H, Paris S, Kielbassa AM. Surface layer erosion of natural caries lesions with phosphoric and hydrochloric acid gels in preparation for resin infiltration. *Caries research*. 2007;41(3):223-30.
19. Meyer-Lueckel H, Paris S, Mueller J, Cölfen H, Kielbassa AM. Influence of the application time on the penetration of different dental adhesives and a fissure sealant into artificial subsurface lesions in bovine enamel. *Dental materials*. 2006 Jan 1;22(1):22-8.
20. Paris S, Meyer-Lueckel H, Cölfen H, Kielbassa AM. Penetration coefficients of commercially available and experimental composites intended to infiltrate enamel carious lesions. *Dental Materials*. 2007 Jun 1;23(6):742-8.

UNDA