

Air quality at Artisanal Crude Oil Refinery Sites in Igia-Ama, Tombia Kingdom, Rivers State, Nigeria

Comment [N1]: Reframe the title to fit the search.

Abstract

Artisanal crude oil refining is an illegal operation thriving in the oil rich Niger Delta region of Nigeria, and their activities are known to cause serious air pollution, evident by incidences of black soot pollution in many parts of this region. This study aimed to ascertain the air quality around artisanal crude oil refinery sites situated in Igia-Ama, Tombia Kingdom, Rivers State, Nigeria.

Comment [N2]: Write(oil-rich)

Comment [N3]: delete(, and their) and write (.their)

Comment [N4]: an

Comment [N5]: evidenced

Comment [N6]: removing it

Comment [N7]: an

Comment [N8]: Parameters

Comment [N9]: Add(s.)

Air quality assessment was carried out using air quality sensor for physicochemical parameter and settle plate exposure for microbial parameters, monitored for both dry and wet season.

During the wet season, SO_x, NO_x, VOC, CH₄, CO, CO₂, O₃, NH₃, H₂S, PM 1, PM 2.5, PM 7, PM10, TSP, Noise, Wind speed, Air temperature, Relative humidity concentration ranged from 0-0.05 ppm, 0.04 - 0.07 ppm, 1004.00 - 1320.00 ppm, 34.33 - 39.67 ppm, 1.33 - 3.00 ppm, 765.00-1556.67 ppm, 0.2 to 0.3 ppm, 0.05 to 0.10 ppm, 0.13 to 0.20 ppm, 15.73 - 0 21.50 µg/m³, 33.53-34.17 µg/m³, 55.47 - 55.93 µg/m³, 64.30 - 67.50 µg/m³, 49.60 - 76.97 µg/m³, 45.63- 48.37dB, 1.13 -1.23 M/S, 28.30 - 29.73°C and 63.13 - 69.23 % respectively.

During the dry season, SO_x, NO_x, VOC, CH₄, CO, CO₂, O₃, NH₃, H₂S, PM 1, PM 2.5, PM 7, PM10, TSP, Noise, Wind speed, Air temperature, Relative humidity concentration ranged from 0.08-0.53 ppm, 0.12 - 0.19 ppm, 1027.33 - 1750.33 ppm, 21.00 - 50.33 ppm, 1.33 - 2.67 ppm, 1226.67-1551540.00 ppm, 0.09 to 0.55 ppm, 0.04 to 0.09 ppm, 0.04 to 0.63 ppm, 26.47 - 33.97 µg/m³, 39.60-51.23 µg/m³, 57.90 - 84.27 µg/m³, 89.13 - 100.17 µg/m³, 128.83 - 170.30 µg/m³, 49.17- 56.73dB, 0.15 -1.97 M/S, 29.07 - 32.57°C and 66.67 - 71.87 % respectively. Results revealed statically significant differences (p<0.05) in air parameters per

season (dry and wet) and between impacted sites and control, as regards NO_x, VOC, CO₂, O₃, PM 1, PM 2.5, PM 4, PM 7, PM 10, TSP and noise levels. During the dry season, THBC ranged from 4.4-4.8 log CFU/m³ and TFC ranged from 4.4-4.8 log CFU/m³. During the wet season THBC ranged from 4.9-5.2 log CFU/m³ and TFC ranged from 2.5-4.6 log CFU/m³.

Comment [N10]: Write (,and)

Comment [N11]: Delete (ranged)

Comment [N12]: season,

Comment [N13]: ,and

Results revealed no statically significant differences ($p < 0.05$) in microbial count per season (dry and wet) as well as between polluted site and control. The bacterial isolates were identified as belonging to five genera: *Bacillus*, *Micrococcus*, *Pseudomonas*, *Staphylococcus* and *Escherichia*, while the fungal isolates belong to three genera: *Fusarium*, *Aspergillus* and *Penicillium*. The excessive concentrations of NO_x, SO_x, and presence of allergenic and pathogenic microorganisms could pose danger to public health.

Keywords: Air quality, artisanal crude oil refinery, exposure, public health

1. INTRODUCTION

Nigeria is a leading exporter of crude oil in Africa with little refining capacity [1]. The availability of crude oil stolen from networks of pipelines crisscrossing the Niger Delta, has led to the boom in artisanal crude oil refineries both as a means to provide cheap fuel and as source of economic empowerment to the indigenous people who have been agitating for resource control [2-4].

In the past, the danger of polluting air, water, soil and biota by artisanal crude oil refineries operators in the Niger Delta was not fully recognized as a grave problem, but now there is no doubt that it is a matter of great concern owing to reports of its correlation with respiratory illnesses, cancer, heart diseases, birth related anomalies among other mortalities [5]. In November 2016, most of the urban parts of Rivers State became enveloped by a thick haze of "strange black soot" from illegal refineries, to exacerbate the existent problem of gas flares from oil fields and petrochemical refineries [6,7]. Soot from hydrocarbon combustion is now a common vegetation, water, soil, and air pollution in Niger Delta region of Nigeria [8,9].

Artisanal crude oil refining soot, which is a mass of impure carbon particles resulting from the incomplete combustion of hydrocarbons [8], as well as other pollutant of various species, including carbon dioxide, carbon monoxide, hydrogen sulphide, various gaseous hydrocarbons including methane, oxides of nitrogen and sulphur, particulates, ash and heavy

Comment [N14]: Write(the)

Comment [N15]: sites

Comment [N16]: Every scientific name is written in Italic

Comment [N17]: Italic

Comment [N18]: Italic

Comment [N19]: add (the)

Comment [N20]: delete (,)

Comment [N21]: add(a source)

Comment [N22]: delete(, but now) and write (.Still,now)

Comment [N23]: (-)

Comment [N24]: ;

Comment [N25]: Delete (a)

Comment [N26]: delete(common) and write (typical)

Comment [N27]: the

Comment [N28]: delete (region of)

Comment [N29]: an

metals [4,8,10]. These pollutants alter the physicochemical and the microbiological quality of air. Soot can serve to transport inhalable microorganisms which can be allergenic and pathogenic, and therefore create a potential danger on public health [9].

Comment [N30]: delete (the)

Comment [N31]: delete (serve to transport inhalable microorganisms which) and write (transport inhalable microorganisms that).

Comment [N32]: delete (,)

Comment [N33]: delete (and therefore create) and write (creating)

Comment [N34]: delete (on) and write (to).

Comment [N35]: onto

Comment [N36]: delete (important) and write (essential).

Comment [N37]: Delete (both)

Comment [N38]: Delete (the) and write (air's)

Comment [N39]: Delete (of air).

Comment [N40]: Follow the journal style

Emphasis on the study of the effect of artisanal crude oil refining on air quality has been on the physicochemical parameters alone. But because microorganisms can sorb on to soot, it is important to look at both the physicochemical and microbiology parameters around the artisanal crude oil refinery sites. Thus, this study aimed to determine the impact of artisanal refinery operations on the physicochemical and microbiology quality of air in Igia-Ama, Tombia Kingdom, Rivers State, Nigeria.

2. MATERIALS AND METHODS

2.1 Study Area

The study area, Igia-Ama, is part of the Kalabari speaking tribe of the Tombia Kingdom of Rivers State, Nigeria. This area lies within the geographical coordinates $4^{\circ} 53' 12.7''$ North, $7^{\circ} 07' 30.6''$ East (Figure 1). The people of this kingdom are approximately 15,000 in population and inhabit the Degema Local Government Area of the State. The oil rich region is accessible through its waterways. Aside the presence of oil and gas infrastructure, the people engage in fishing and arable agriculture.

Comment [N41]: Add(-)

Comment [N42]: Add(-)

Comment [N43]: from

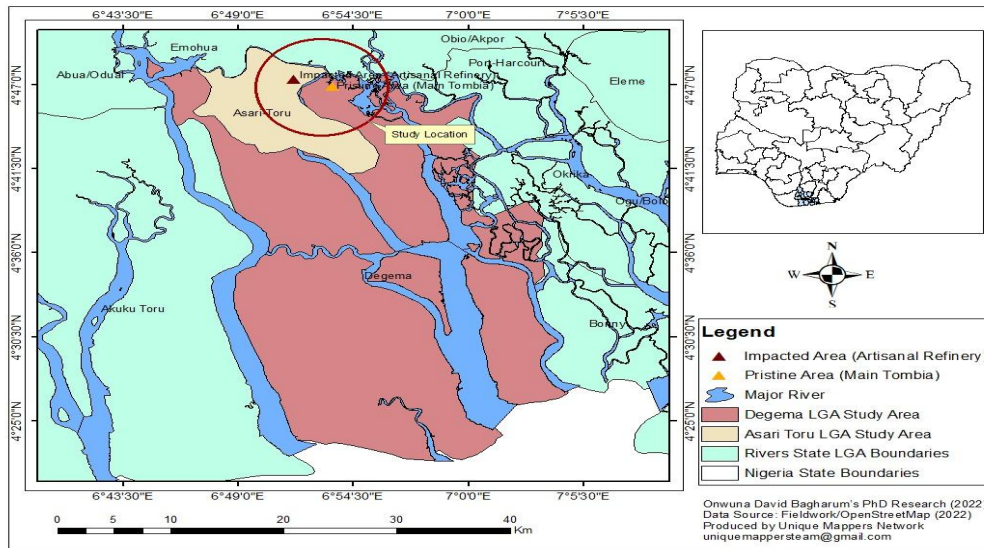


Figure 1: Sampling location in Rivers State

2.2 Air Sampling

Air sampling was done three (3) times a day; morning, noon and evening for three (3) consecutive periods during dry season and same was carried out during wet season as well. One (1) control point located far from the impacted area on the leeward side of wind direction, was used. Installed gas device (Aeroqual) was used to determine the concentrations of NO_x, VOC, CH₄, CO, CO₂, O₃, PM 1, PM 2.5, PM 4, PM 7, PM 10, TSP, noise, SO_x, NH₃, H₂S, wind speed, air temperature (ambient), wind direction and relative humidity. The settle plate method described by Mbakwem-Aniebo et al. [11] was used for the isolation of microorganism in the air.

Comment [N44]: the

Comment [N45]: the

Comment [N46]: the

Comment [N47]: delete (as well)

Comment [N48]: add(was)

Comment [N49]: delete (, was used)

Comment [N50]: An installed

Comment [N51]: ,

Comment [N52]: Used the

Comment [N53]: Delete (for the isolation) and write (to isolate)

Comment [N54]: microorganisms

2.3 Enumeration and Characterization of Isolates

Enumeration of isolates was done using the Omeliansky's formula ($N=5a \times 10^4/bt$) with counts expressed in CFU/m³.

Comment [N55]: delete (of)

Comment [N56]: delete (the)

Bacterial isolates were identified based on their morphological colony characteristics, Gram reaction and biochemical tests (indole test, catalase test, citrate test, motility test, urease test, starch hydrolase test, and sugar fermentation) as outlined by Cheesbrough [12]. Bergey's manual of systematic bacteriology [13] was used as reference for bacteria identification.

Comment [N57]: add (a)

Fungal isolates were identified based on their microscopic and macroscopic characteristics with reference to descriptions by Salvamani and Nawawi [14].

Comment [N58]: delete (reference) and write (regard)

Comment [N59]: delete (with reference to) and write (regarding)

3. RESULTS

3.1 Physicochemical and Meteorological Parameter of Air

During the wet season, SO_x, NO_x, VOC, CH₄, CO, CO₂, O₃, NH₃, H₂S, PM 1, PM 2.5, PM 7, PM10, TSP, Noise, Wind speed, Air temperature, Relative humidity concentration ranged from 0-0.05 ppm, 0.04 - 0.07 ppm, 1004.00 - 1320.00 ppm, 34.33 - 39.67 ppm, 1.33 - 3.00 ppm, 765.00-1556.67 ppm, 0.2 to 0.3 ppm, 0.05 to 0.10 ppm, 0.13 to 0.20 ppm, 15.73 - 0 21.50 µg/m³, 33.53-34.17 µg/m³, 55.47 - 55.93 µg/m³, 64.30 - 67.50 µg/m³, 49.60 - 76.97 µg/m³, 45.63- 48.37dB, 1.13 -1.23 M/S, 28.30 - 29.73°C and 63.13 - 69.23 respectively (Table 1).

During the dry season, SO_x, NO_x, VOC, CH₄, CO, CO₂, O₃, NH₃, H₂S, PM 1, PM 2.5, PM 7, PM10, TSP, Noise, Wind speed, Air temperature, Relative humidity concentration ranged from 0.08-0.53 ppm, 0.12 - 0.19 ppm, 1027.33 - 1750.33 ppm, 21.00 - 50.33 ppm, 1.33 - 2.67 ppm, 1226.67-1551540.00 ppm, 0.09 to 0.55 ppm, 0.04 to 0.09 ppm, 0.04 to 0.63 ppm, 26.47 - 33.97 µg/m³, 39.60-51.23 µg/m³, 57.90 - 84.27 µg/m³, 89.13 - 100.17 µg/m³, 128.83 - 170.30 µg/m³, 49.17- 56.73dB, 0.15 -1.97 M/S, 29.07 - 32.57°C and 66.67 - 71.87 respectively (Table 2).

Two-way analysis of variance results revealed statically significant difference (p<0.05) in concentrations of NO_x, VOC, CH₄, CO, CO₂, O₃, PM 1, PM 2.5, PM 4, PM 7, PM 10, TSP and noise, between polluted and control samples. However, for SO_x, NH₃, H₂S, wind speed,

Comment [N60]: add(a)

air temp (ambient) and relative humidity no statically significant difference ($p>0.05$) was observed. Also, results revealed statically significant differences ($p<0.05$) in air parameters per season (dry and wet) with regards to NO_x, VOC, CO₂, O₃, PM 1, PM 2.5, PM 4, PM 7, PM 10, TSP and noise, while SO_x, CH₄, CO, NH₃, H₂S, wind speed, air temperature and relative humidity were not significantly different ($p>0.05$).

Comment [N61]: H

Comment [N62]: Delete (significant) and write (substantial).

Comment [N63]: Delete (,while) and write (.In contrast,)

Table 1: Air parameters (Wet season)

Parameter	Polluted sites						Control						FME nv. Limit
	Morning		Afternoon		Evening		Morning		Afternoon		Evening		
	Mean	Std.	Mean	Std.	Mean	Std.	Mean	Std.	Mean	Std.	Mean	Std.	
SO _x (ppm)	0.05	0.01	0.03	0.01	0.05	0.00	0.00	0.00	0.00	0.00	0.00	0.00	0.01
NO _x (ppm)	0.07	0.00	0.04	0.01	0.06	0.00	0.04	0.01	0.04	0.01	0.05	0.01	0.04-0.06
VOC(ppm)	1123.33	5.77	1004.00	19.70	1320.00	110.00	10.67	1.15	9.67	1.53	6.67	1.53	NS
CH ₄ (ppm)	37.67	2.52	34.33	4.04	39.67	1.53	8.00	2.00	4.33	1.53	5.67	1.15	NS
CO(ppm)	2.00	0.00	1.33	0.58	3.00	1.00	0.00	0.00	0.00	0.00	0.00	0.00	10
CO ₂ (ppm)	765.00	47.70	1003.33	185.83	1556.67	28.87	543.33	40.41	610.00	36.06	723.33	15.28	NS
O ₃ (ppm)	0.03	0.01	0.02	0.01	0.03	0.01	0.02	0.01	0.01	0.00	0.01	0.01	NS
NH ₃ (ppm)	0.10	0.00	0.10	0.00	0.05	0.05	0.00	0.00	0.00	0.00	0.00	0.00	NS
H ₂ S(ppm)	0.20	0.00	0.13	0.06	0.20	0.00	0.00	0.00	0.00	0.00	0.00	0.00	NS
PM 1(µg/m ³)	15.73	0.31	16.17	2.01	21.50	0.90	4.33	0.25	4.90	0.44	5.87	0.40	NS
PM 2.5(µg/m ³)	33.53	0.51	34.17	1.63	33.53	0.51	8.13	0.21	9.40	0.75	10.43	0.12	NS
PM 4(µg/m ³)	46.80	0.56	44.77	1.12	45.30	2.54	12.43	0.15	13.93	0.64	13.20	0.30	NS
PM 7(µg/m ³)	55.93	1.75	56.93	0.32	55.47	0.81	17.90	0.36	19.50	0.90	19.83	0.49	NS
PM 10(µg/m ³)	64.30	1.44	67.13	2.63	67.50	1.85	22.73	0.85	25.03	0.64	30.47	0.06	NS
TSP (µg/m ³)	76.97	4.65	49.60	26.42	76.73	2.93	54.80	4.56	58.07	0.58	56.43	1.00	250
Noise (dB)	45.63	0.70	45.87	0.60	48.37	1.03	43.97	0.40	53.40	2.76	53.80	0.69	90
Wind speed (m/s)	1.23	0.15	1.23	0.15	1.13	0.06	0.57	0.31	0.70	0.10	1.23	0.15	NS
Air Temp	29.57	0.06	29.73	0.42	28.30	0.26	29.93	0.06	30.10	0.10	32.33	0.06	NS

(Ambient) °C														
Relative Humidity (%)	68.73	0.06	63.13	1.91	69.23	0.31	63.80	0.00	64.03	1.19	70.67	0.40		NS
Wind Direction	NE	NE	NNE	NE	NE	NNE	NE	NE	NNE	NE	NE	NE	NNE	NS

Table 2: Air parameters (Dry season)

Parameter	Polluted sites						Control site						FME nv. Limit
	Morning		Afternoon		Evening		Morning		Afternoon		Evening		
	Mean	Std.	Mean	Std.	Mean	Std.	Mean	Std.	Mean	Std.	Mean	Std.	
SO _x (ppm)	0.09	0.01	0.08	0.01	0.53	0.12	0.00	0.00	0.00	0.00	0.00	0.00	0.01
NO _x (ppm)	0.12	0.00	0.14	0.01	0.19	0.01	0.06	0.02	0.10	0.01	0.08	0.01	0.04-0.06
VOC(ppm)	1027.33	158.31	1064.33	55.01	1750.33	25.89	535.00	5.57	721.67	10.07	928.67	47.06	NS
CH ₄ (ppm)	21.00	2.00	21.00	3.00	50.33	5.86	4.67	0.58	4.00	0.00	10.67	0.58	NS
CO(ppm)	1.33	0.58	2.67	1.15	2.67	1.53	0.00	0.00	0.00	0.00	0.00	0.00	10
CO ₂ (ppm)	1407.33	15.53	1540.00	70.00	1226.67	86.22	977.67	25.74	1153.33	51.32	1223.33	90.74	NS
O ₃ (ppm)	0.55	0.06	0.64	0.05	0.09	0.01	0.02	0.01	0.01	0.00	0.06	0.02	NS
NH ₃ (ppm)	0.04	0.03	0.09	0.01	0.60	0.10	0.00	0.00	0.00	0.00	0.00	0.00	NS
H ₂ S(ppm)	0.04	0.02	0.06	0.01	0.63	0.48	0.00	0.00	0.00	0.00	0.00	0.00	NS
PM ₁₀ (µg/m ³)	26.47	2.18	33.97	2.15	33.83	3.14	12.93	1.23	21.57	2.53	27.17	1.43	NS
PM _{2.5} (µg/m ³)	46.33	4.20	51.23	0.47	39.60	0.82	18.10	1.08	22.93	1.17	31.57	0.21	NS
PM ₄ (µg/m ³)	79.53	11.11	84.27	2.41	57.90	1.83	26.77	1.22	32.33	0.47	39.93	0.35	NS
PM ₇ (µg/m ³)	94.20	6.27	100.17	1.63	89.13	1.46	43.30	1.40	44.63	0.95	52.70	0.92	NS
PM ₁₀ (µg/m ³)	108.33	5.70	116.53	3.49	127.53	5.35	75.97	2.41	85.47	2.63	81.23	1.53	NS

TSP ($\mu\text{g}/\text{m}^3$)	128.8	14.2	134.6	6.3	170.3	6.6	83.8	2.2	99.27	2.5	99.30	1.3	250
Noise (dB)	49.17	2.31	56.73	2.7	55.07	2.0	65.9	1.3	70.40	1.4	71.03	2.0	90
Wind speed (m/s)	1.23	0.32	1.97	0.1	0.63	0.1	0.90	0.1	2.43	0.0	2.17	0.2	NS
Air Temp (Ambient) $^{\circ}\text{C}$	30.70	0.72	32.57	0.5	29.07	0.2	31.6	0.2	33.50	0.9	31.53	0.0	NS
Relative Humidity (%)	72.23	0.42	66.53	3.5	73.67	0.7	71.8	0.5	65.67	1.0	72.50	0.9	NS
Wind Direction	SE	SE	E	E	SE	SE	NE	NE	N	N	N	NE	NS

3.2 Bacterial and Fungal Counts in Air

Figure 2 shows THBC results for air at polluted site and control during the dry and wet seasons. During the dry season, THBC ranged from 4.4-4.8 log CFU/m³ in polluted sites, with the highest count (4.8 log CFU/m³) recorded in afternoon and least (4.4 log CFU/m³) in the morning and evening. THBC ranged from 4.6-4.86 log CFU/m³ in the control site, with the highest count (4.8 log CFU/m³) recorded in the evening and least (4.6 log CFU/m³) in the morning and evening. During the wet season, THBC ranged from 4.9-5.2 log CFU/m³ in polluted sites, with the highest count (5.2 log CFU/m³) recorded in morning and least (4.35 log CFU/m³) in the evening. THBC ranged from 4.35-5.11 log CFU/m³ in the control site, with the highest count (5.11 log CFU/m³) recorded in evening and least (4.35 log CFU/m³) in the afternoon.

Figure 3 shows TFC results for air at polluted site and control during the dry and wet seasons. During the dry season, TFC ranged from 4.4-4.8 log CFU/m³ in polluted sites, with the highest count (4.8 log CFU/m³) recorded in afternoon and least (4.4 log CFU/m³) in the morning and evening. TFC ranged from 3.17-3.9 log CFU/m³ in the control site, with the highest count (3.9 log CFU/m³) recorded in the morning and least (3.17 log CFU/m³) in the

Comment [N64]: stes

Comment [N65]: delete (polluted) and write (contaminated)

Comment [N66]: delete (sites) and write (areas)

Comment [N67]: the

Comment [N68]: s

Comment [N69]: the

Comment [N70]: s

Comment [N71]: the

Comment [N72]: the

Comment [N73]: the

Comment [N74]: the

Comment [N75]: es

Comment [N76]: delete (polluted sites) and write (contaminated areas)

Comment [N77]: the

Comment [N78]: the

evening. During the wet season, TFC ranged from 2.5-4.6 log CFU/m³ in polluted sites, with the least count (2.5 log CFU/m³) recorded in evening and highest (4.6 log CFU/m³) in the morning. TFC ranged from 3.3-5.6 log CFU/m³ in the control site, with the highest count (5.6 log CFU/m³) recorded in morning and least (3.3 log CFU/m³) in the evening.

Comment [N79]: delete (least) and write (most minor)

Comment [N80]: s

Comment [N81]: the

Comment [N82]: the

Comment [N83]: s

Comment [N84]: s

Comment [N85]: the

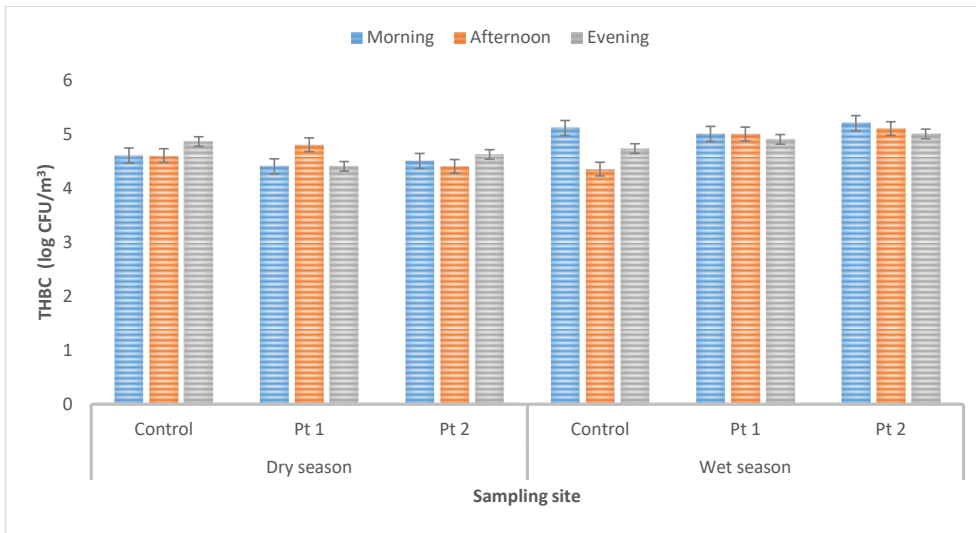


Figure 2: THBC in air samples

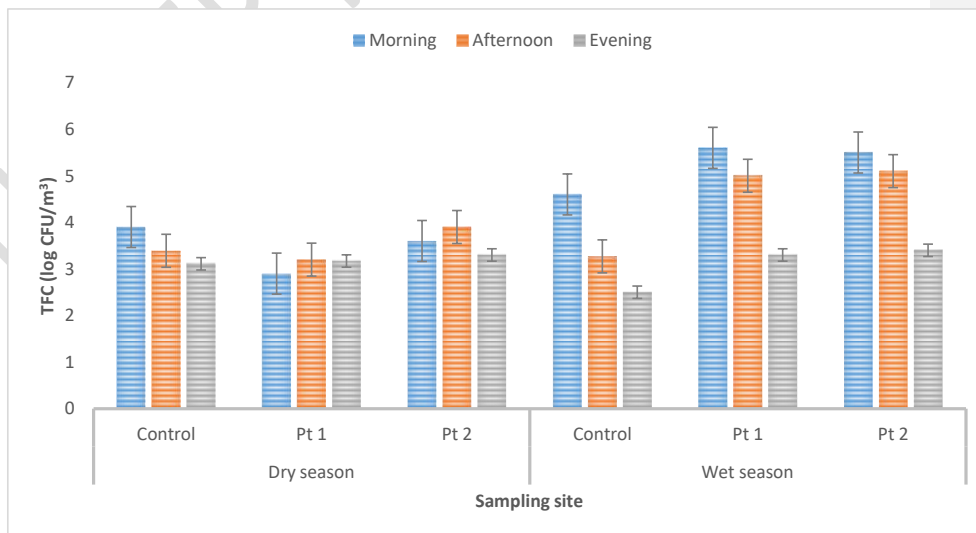


Figure 3: TFC in air samples

Table 3 shows the microorganisms isolated from the air. The bacterial isolates were identified as belonging to five genera: *Bacillus*, *Micrococcus*, *Pseudomonas*, *Staphylococcus* and *Escherichia*, while the fungal isolates belong to three genera: *Fusarium*, *Aspergillus* and *Penicillium*.

Comment [N86]: Italic

Table 3. Bacterial and fungal isolates obtained from the air samples

Sample	Bacteria	Mold
Impacted soil	<i>Bacillus</i> sp. <i>Micrococcus</i> sp. <i>Pseudomonas</i> sp. <i>Staphylococcus</i> sp. <i>Escherichia coli</i>	<i>Aspergillus</i> sp. <i>Penicillium</i> sp. <i>Fusarium</i>
Control	<i>Bacillus</i> sp. <i>Citrobacter</i> sp. <i>Acinetobacter</i> sp. <i>Pseudomonas</i> sp. <i>Micrococcus</i> sp. <i>Escherichia coli</i> <i>Staphylococcus</i> sp.	<i>Aspergillus niger</i> <i>Fusarium</i> sp. <i>Penicillium</i> sp.

4. Discussion

This study investigated the impact of artisanal refinery operations on the air quality in Igia-Ama, Tombia Kingdom, Rivers State, Nigeria. Air quality assessment was carried out to determine the concentrations of NO_x, VOC, CH₄, CO, CO₂, O₃, PM 1, PM 2.5, PM 4, PM 7, PM 10, TSP, SO_x, NH₃, H₂S, relative humidity and noise level in the study area. The results show that SO_x and NO_x concentrations for impacted site for both dry and wet season were above the pristine environment (control site) and above the Federal Ministry of Environment (FME_{env}) limits. The results also show that SO_x and NO_x concentrations in polluted site were more in the atmosphere during the dry season than wet season. SO_x and NO_x are among criteria air pollutants associated with the formation of acid rain [4]. Concern for these gases (SO_x and NO_x) and other criteria air pollutants such as O₃, particulate matter and CO₂ is that

Comment [N87]: Delete (the)

Comment [N88]: Add(Carried out)

Comment [N89]: Delete(carried out)

Comment [N90]: an

Comment [N91]: es

Comment [N92]: s

Comment [N93]: removing (above)

Comment [N94]: the

Comment [N95]: es

Comment [N96]: in the

Comment [N97]: the

Comment [N98]: delete (,)

they can be dispersed far beyond the point of generation owing to diffusion, and can be inhaled or deposited on biota, with potential to cause severe physiological impairments and diseases [4,5,15,16].

Concentrations of other pollutants (VOC, O₃, H₂S, particulate matter (PM), TSP, noise, air temperature relative humidity, CH₄ and CO₂) in polluted site were more in the atmosphere during the dry season than wet season. This is in agreement with the report by Yakubu [5] and Adoki [17] that levels of air pollutants are influenced by season, with air pollutant occurring mostly in the dry season. With respect to pollutants emanating from artisanal crude oil refineries, the levels during the dry season, tend to be higher in the evenings and morning (early hours) where most of the cooking activities are done. However, the air quality results from the polluted site showed that CO was more in the atmosphere during the wet season than dry season. The various concentrations of monitored parameter (NO_x, VOC, CH₄, CO, CO₂, O₃, PM 1, PM 2.5, PM 4, PM 7, PM 10, TSP and noise) were significantly different ($p < 0.05$), except SO_x, NH₃, H₂S, wind speed, air temperature and relative humidity. With regard to season (dry and wet), concentrations of NO_x, VOC, CO₂, O₃, PM 1, PM 2.5, PM 4, PM 7, PM 10, TSP and noise were significantly different ($p < 0.05$), while SO_x, CH₄, CO, NH₃, H₂S, wind speed, air temperature and relative humidity were not significantly different ($p > 0.05$).

The results in the present study agree with values for air quality analysis reported by Ukaegbu et al. [18] in Port Harcourt Metropolis, in which the concentrations of SO₂ and NO₂ exceeded the WHO and FMEnv Standard limits for 24 hours exposure. Onakpohor et al. [4] in their study of the effect of artisanal petroleum refineries in the Niger-Delta similarly established that the activities are sources of significant air pollution, which breached the set limits for NO_x and SO₂. Onakpohor et al. [4] reported that the amount of pollutant gases released is a function of the refining capacity of the artisanal refineries. Yakubu [5] reported

Comment [N99]: the

Comment [N100]: es

Comment [N101]: the

Comment [N102]: s

Comment [N103]: delete (mostly) and write (mainly).

Comment [N104]: delete (With respect to) and write (For).

Comment [N105]: when

Comment [N106]: delete (season)

Comment [N107]: add (during the)

Comment [N108]: a

Comment [N109]: s

Comment [N110]: delete (With regard to) and write (About)

Comment [N111]: At the same time,

Comment [N112]: very

Comment [N113]: of

Comment [N114]: ,

Comment [N115]: Delete (the)

that soot pollution emanating from artisanal crude oil refining in Rivers State, has increased the pollution burden in the state, especially with respect to particulate matter. Although TSP concentrations in the present study was within acceptable limit, concern still exist for their levels in the air. Scientific studies have consistently reported correlation between fine and coarse PM with lung cancer, chronic lung disease, influenza, respiratory impairment, asthma, coronary artery disease and increased mortality rate [8, 19, 20].

Comment [N117]: for

Comment [N118]: were

Comment [N119]: the

Comment [N120]: s

Comment [N121]: a

During the dry season, THBC ranged from 4.4-4.8 log CFU/m³ in polluted sites, and ranged from 4.6-4.86 log CFU/m³ in the control site. TFC ranged from 4.4-4.8 log CFU/m³ in polluted sites, and ranged from 3.17-3.9 log CFU/m³ in the control site. During the wet season, THBC ranged from 4.9-5.2 log CFU/m³ in polluted sites, and ranged from 4.35-5.11 log CFU/m³ in the control site. TFC ranged from 2.5-4.6 log CFU/m³ in polluted sites, and ranged from 3.3-5.6 log CFU/m³ in the control site. There was no statistical significant difference (p>0.05) in microbial counts between polluted soil and control as well as between dry and wet season. These results thus suggest that artisanal refinery operation does not significantly affect microbial pollution in air. This could be so because of the prevailing meteorological conditions that disperse microorganisms in open spaces [21].

Comment [N122]: went

Comment [N123]: es

Comment [N124]: went

Comment [N125]: delete

Comment [N126]: delete (ranged)

Comment [N127]: statistically

Comment [N128]: ,

Comment [N129]: s.

Comment [N130]: the

Comment [N131]: delete (so)

The bacterial isolates were identified as belonging to five genera: Bacillus, Micrococcus, Pseudomonas, Staphylococcus and Escherichia, while the fungal isolates belong to three genera: Fusarium, Aspergillus and Penicillium. Similarly, Nrior and Chioma [9] studied the effect of the black soot on microbial air quality, and identified associated with soot as belonging to five bacterial genera: Staphylococcus, Bacillus, Pseudomonas, Escherichia, Micrococcus, just like in the present study. The fungal isolates in that study include species of Aspergillus, Fusarium and Penicillium. Members of these genera contain species that cause abscess, food poisoning, respiratory diseases and scabby skin syndrome [9].

Comment [N132]: Italic

Comment [N133]: an

5. CONCLUSION

This study examined the impact of artisanal refinery operations on the physicochemical and microbiology quality of air in Igia-Ama, Tombia Kingdom, Rivers State, Nigeria and established that the concentrations of NO_x and SO_x exceeded the set limit by the Federal Ministry of Environment. The microorganisms present belong to genera of bacteria and fungi that contain pathogenic species.

Comment [N134]: air quality

Comment [N135]: delete (air)

Comment [N136]: delete (and) and write (.It)

References

Comment [N137]: I suggest to add modern references and increase their numbers

1. Mamudu A, Okoro E, Igwilo K., Olabode O, Francis E, Odunlami O. Challenges and prospects of converting Nigeria illegal refineries to modular refineries. *The Open Chemical Engineering Journal*. 2019;13: 1-6. DOI: 10.2174/1874123101913010001
2. Asuru C, Amadi S. Technological capability as a critical factor in Nigerian development: the case of indigenous refineries in the Niger Delta region. *Int. J. Innovat. Res. Educat. Technol. Soc. Strat.* 2016;3:2467–8163.
3. Akredolu FA, Sonibare JA. Process evaluation of Nigeria's artisanal ("Illegal") petroleum refineries for effective air pollution control. In: *Proceedings of the 45th Annual Conference of NSChE, 5th – 7th Nov. 2015, Warri, Nigeria*, pp. 94–109.
4. Onakpohor A, Fakinle BS, Sonibare JA, Oke MA, Akredolu FA. Investigation of air emissions from artisanal petroleum refineries in the Niger-Delta Nigeria. 2020; *Heliyon*, 6: e05608

5. Yakubu OH. Particle (Soot) pollution in Port Harcourt Rivers State, Nigeria-Double Air pollution burden? Understanding and tackling potential environmental public health impacts. *Environments*. 2018;5(1):2. <https://doi.org/10.3390/environments5010002>
6. Giadom FD. The Port Harcourt 'black soot' Phenomenon: cause and effects on public health and environment. The Port Harcourt clean air summit Elkan Terrace Hotels Port Harcourt Rivers State. 2018; 1-18.
7. The Guardian „Strange black soot“ causes anxiety in Port Harcourt. 2017. Retrieved 4th April, 2020, from <https://guardian.ng/news/strange-black-soot-causes-anxiety-in-port-harcourt/>
8. Omidvarborna H, Kumar A, Dong-Shik K. Recent studies on soot modeling for diesel combustion. *Renewable and Sustainable Energy Reviews*. 2015;48:635-647.
9. Nrior RR, Chioma IC. Black soot in Port Harcourt: Incidence of pathogenic microbes associated with black soot in indoor aerosols of class rooms in Port Harcourt Nigeria. *IOSR Journal of Environmental Science, Toxicology and food Technology (IOSR-JESTFT)*. 2017;11(12): 43-49.
10. Okorie E, Olorunfemi C, Sule H. Assessment of some selected heavy metals in soot from the exhaust of heavy duty trucks and power generating plants in Nigeria by flame atomic absorption spectrophotometer. *International Journal of Biological and Chemical Sciences*. 2010; 4(4):1147-1152.
11. Mbakwem-Aniebo C, Stanley HO, Onwukwe CDV. Assessment of the indoor air quality of majors' biological laboratories in Ofrima Complex, University of Port Harcourt, Nigeria. *Journal of Petroleum and Environmental Biotechnology*. 2016; 7(4):1-5.

12. Cheesbrough M. Microbiological test: District Laboratory Practice in Tropical Countries. In: A. Cremer and G. Evan (Eds). Cambridge University Press, UK; 2000.
13. Aneja KR. Experiments in Microbiology, Plant Pathology and Biotechnology. 4th Ed., New Age International (P) Ltd, New Delhi; 2003.
14. Salvamani S, Nawawi NM. Macroscopic and microscopic approaches for identification of fungi from plant soil of Cameron Highlands. *Bioremediation Science & Technology Research* 2014; 2(1):14-18.
15. Dean ES, John RB, Clayton TC, Sara DM, Soon HJ, Kevin M, Rogelio PP, Mary BR, Horacio RR, Akshay S, George DT, Teresa T, Anessa V, Donald JW. Air pollution and noncommunicable diseases: a review by the forum of International Respiratory Societies' Environmental Committee, Part 1: the damaging effects of air pollution. *CHEST*. 2019; 155: 409–416.
16. Miltra AP, Sharma C. Indian aerosols: present status. *Chemosphere*. 2002;49: 1175–1190.
17. Adoki A. Air Quality Survey of some locations in the Niger Delta Area. *J. Appl. Sci. Environ. Manag.* 2012, 16, 125–134.
18. Ukaegbu KOE, Njoku JD, Ejiogu CC, Iwuji MC, Emereibole EI, Mgbeahuruike IU, Uyo C N. Spatiotemporal assessment of air quality in selected LGA in Rivers State. *International Journal of Engineering Applied Science and Technology*. 2020;4(9):50-60.
19. Hussin FS, Jalaludin J. Association of PM10 and PM2.5 exposure with respiratory health of the children living near palm oil mill, Dengkil. *Malatian Journal of Public Health Medicine*. 2016;15(2):20 – 26.

20. Miller KA, Siscovick DS, Sheppard L, Shepherd K, Sullivan JH, Anderson GL, Kaufman JD. Long-term exposure to air pollution and incidence of cardiovascular events in women. *New England Journal of Medicine*. 2007;356:447-458.

21. Stanley HO, Inuope OA. Assessment of air pollution and health hazard associated with selected sawmills in Port Harcourt metropolis. *Asian Journal of Research in Microbiology*. 2021;9(4): 17-34.

UNDER PEER REVIEW