

Original Research Article

“EVALUATION OF ANTIUROLITHIATIC ACTIVITY OF *DOLICHOS BIFLORUS* SEED EXTRACT BY USING ETHYLENE GLYCOL INDUCED MODEL”

ABSTRACT

In the phytochemical screening, it was found that *Dolichos Biflorus* seed extract contained the presence of tannins steroids, protein, flavonoids, terpenoids, mucilage, saponin, and carbohydrate, but no alkaloids fixed oil. So, this plant has a highly diuretic activity.

Objective: The Present study aims to investigate the anti-Urolithiatic activity of *Dolichos Biflorus* methanolic seed extract in a rat model.

Methods: *Dolichos Biflorus* Seeds Extract were evaluated for anti-Urolithiatic activity. Urolithiasis has been induced in Wistar rats through Ethylene glycol (0.75% v/v, p.o). Upon completion of the experiment, animals in all groups have been sacrificed and biochemical parameters such as; calcium, creatinine, Phosphorus, Uric acid, Alkaline Phosphatase BUN (Blood Urea Nitrogen), and histology of Kidney have been observed. Furthermore, Potassium, Oxalate levels, and Alanine Amino Transferases were measured.

Result: The observed extract *Dolichos Biflorus* was proven to be safe in the toxicity findings. It has been shown an in-vivo significant effect to manage the Urolithiatic markers such as calcium, creatinine, Phosphorus, Uric acid, Alkaline Phosphatase BUN (Blood Urea Nitrogen), and Potassium. Urolithiatic of rats have been observed abundant crystal depositions, renal epithelial cells had more tubular dilatation and damage shown by large spaces in the tissue, renal stone deposition damages the renal tissue and deteriorates the renal function. The markers of renal function include BUN, uric acid, urea and serum creatinine which were lower compared to the animals that received the plant extract.

Conclusion: All its findings and phytoconstituents existing inside the extract must stay the viable chemical materials involved in the prevention of Urolithiatic.

Keywords: *Dolichos Biflorus*, Ethylene glycol, Anti-urolithiatic activity, renal calculi

1. INTRODUCTION

The stones in the kidneys are characterised by being solid particles formed in the kidneys and urinary system. However, in some cases, these stones can be minute and go through the blood circulation and pass out the body through the urinary tract with urine. In this case, the formation of kidney stones has no harm or damage to the body organs or tissues. In the contrast, if the stones are bigger, they will block the urine flow and cause pain that required medical treatment. Urolithiasis is one of the most common diseases of the human urinary tract [1]. and is associated with calculus or stone formation in the urinary system but kidney calculus often arises in the kidney. Kidney stone form when urine contains more crystal forming substance such as calcium, oxalate, and uric acid. These crystal forming agents come together to form crystal [2].

Formation of renal crystal is a multifactorial process that may relate to diet, urinary tract infection, altered urinary solutes and colloids, decrease urinary drainage and urinary stasis, and prolonged immobilization of Randall's plaque and microlith [3].

The metabolism of ethylene glycol metabolized by the human body results in toxic compounds such as glycolaldehyde, glycolate and glyoxylate which result in destroying of tissue due to the deposition of the calcium oxalate deposition. Specifically, a high anion gap causes metabolic acidosis, lactic acidosis and hypocalcaemia. Oxalate acid is associates with calcium to form calcium oxalate crystals, which deposit in the kidney causing haematuria and the presence of the protein urea, increasing creatinine and eventually renal failure. [4].

Surgical procedures, lithotripsy, and local calculus destruction with a high-powered laser are all common techniques for eliminating the calculi. Generally, these treatment methods are expensive for patients and the possible recurrence is common [5]. Without preventive care, the recurrence rate is approximately 10% after the first year, 33% after five years, and 50% after ten years. [6]. Several medications prescribed for preventing the recurrence include thiazide diuretics and alkali citrate. However, the effectiveness of these drugs is still not clinically proven. [7].

Using herbal medicine and plant extracts has been widely known as an alternative to chemical or synthetic drugs with a lesser side effect. This leads to the fact that using herbal medicine techniques is corresponding with the return to natural remedies with a less or absent side effects.

The urinary stones disease is known throughout history and is very common in the Northern part of India. [8].

2. MATERIALS AND METHODS

2.1 Plant Information:

Dolichos biflorus Linn or *Vigna unguiculata* [L.] Papilionaceae (Fabaceae) is a shrub and downing herb of Fabaceae family and it is endemic to most parts of India and is reported at high elevations up to 1000 m.a.s.l.

The common name is kulthi beans or horse gram seeds. In Ayurveda the seed is used in the treatment of piles, pain, constipation, wounds, urinary calculi, cough, oedema, asthma etc [9]. It is also used to reduce crystalluria and to lyse stones. The powdered seeds are used as a poultice to induce sweating [10].

Dolichos biflorus is commonly used in herbal and traditional medicine with remarkable healing properties. Seeds of this plant are widely used treatment of several ailments besides used as a tonic, astringent, and diuretic [11].

2.2 Plant collection and extract preparation

The seeds of the plant were obtained from the authorized commercial dealer (Shree Mahadev enterprises, 35, RadhikaVihar, Krishna Nagar, Mathura-281004). Order id- OD123736981623169000, Invoice number- FACOSE2200005491

2.3 Extraction of *Dolichos biflorus* SEED by using Soxhlet extractor and sample preparation [12].

Preparation of Extract: The seeds of the plant *Dolichos biflorus* were collected and washed using fresh water and dried under shade. The seeds are crushed to a fine powder after drying. The chemical compounds present in the seeds were extracted with methanol by soxhlation.

The solvent is then evaporated by using a rotary evaporator and the phytochemicals were collected and stored for further analysis.

2.4 Experimental animals:

Wistar rats Male (8-10 weeks old) weighing 150–200g were included in this study. Before starting the experiment, the rats were maintained in the laboratory for adjustment and adaptation for 7 days. The experimental rats were maintained in ventilated cages at a photoperiod of 12:12 and a temperature of $25 \pm 2^\circ\text{C}$. The animals had easy access to *ad libitum* standard chewable food and water. The procedures of the experiments were carried out following the general standards and protocols based on the approval of the IAEC (Institutional Animal Ethical Committee) of Karnataka College of Pharmacy, Bangalore (Reg. Number: IAEC/09/21-22/10/18/12/21).

2.5 Model for antiurolithiatic activity:

2.5.1 Ethylene glycol-induced Urolithiasis

Groupings were done in the following manner, Where N = 6 animals in each group;

Chart 1: Ethylene glycol-induced Urolithiasis

01.		Group I: Normal Control Group – Vehicle. i.e. Normal Saline (10 ml/kg, p.o.) for 28 days	6 rats
	Ethylene glycol induced	Group II: Disease Control, Received – Ethylene glycol (0.75% v/v) in drinking water for 28 days	6 rats
	Urolithiasis in Rat's Model	Group III: Standard drug, Received Ethylene glycol (0.75% v/v) + Cystone (750mg/kg,p.o.)for 28 days	6 rats
		Group IV: Test drug (Low dose), Received Ethylene glycol (0.75% v/v) in drinking water for 28 days +	6 rats

		methanolic extract of <i>Dolichos biflorus</i> at (150mg/kg, p.o.)	
		Group V: Test drug (High dose), Treatment group – Ethylene glycol (0.75% v/v) in drinking water for 28 days + methanolic extract of <i>Dolichos biflorus</i> at (300mg/kg, p.o.)	6 rats

At the end of the treatment, serum samples were collected and the animals were sacrificed by using a high dose of pentobarbitone sodium for histopathology and antioxidant analysis of the kidney. Blood samples were withdrawn by cardiac puncture and retroorbital routes and samples were centrifuged at 2500 rpm for 15 minutes and examined. The parameters;

2.5.2 Observed Parameters:

Calcium, BUN (Blood Urea Nitrogen) uric acid, creatinine, potassium, alanine immune transferase, Phosphorus, oxalate, Alkaline Phosphatase [13], [14].

The euthanized rats were conducted through a high dose of Pentobarbital followed by scarification. Kidneys of each animal were dissected and chopped into small parts followed by preservation and fixation in 10% formalin for 48 hours. Alcohol was used for tissue dehydration, embedded in paraffin, cut in a microtome and stained with Haematoxylin-Eosin dye. The mounted slides were examined under the microscope and compared to the slides from the control group. Determination of biochemistry markers was carried out following the standard protocols and procedures in the manufacturer's instructions.

2.6 Statistical analysis

The data of the present study was analysed descriptively for the mean and standard error mean (Mean \pm S.E.M.) of the 6 replicates in each experimental group. All statistical analyses were carried out using the Graph Pad Prism software package (version 5). The one-way analysis of variance (ANOVA) was utilized to examine the

significant differences in the means at the significance level of $P < 0.05$. The multiple comparison test of the Tukey HSD test was used for pairwise comparison.

3. RESULTS

The Control group received an equivalent volume of “vehicle” only, the Disease control group received “Ethylene glycol” (0.75%v/v) in water, the Standard group received “Cystone” (750mg/kg,p.o.) and the Test drug, “*dolichos biflorus*” extract received low dose 150mg/kg & high dose 300 mg/kg p.o. respectively.

4. The following parameters were observed post-treatment:

4.1 Estimation of calcium:

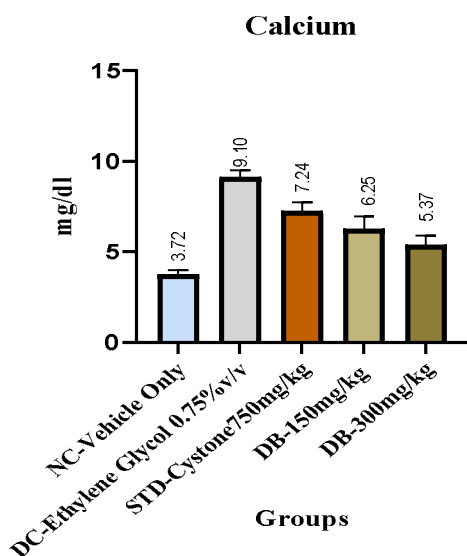


Fig 1: Calcium

Results of calcium presented as Mean \pm S.E.M (n=6).

Table1: Statistics of calcium-> Comparison between the groups:

Tukey's multiple comparisons test	Mean Diff.	Below threshold?	Summary	Adjusted P Value
NC-Vehicle Only vs. DC-Ethylene Glycol 0.75% v/v	-5.378	Yes	****	<0.0001
NC-Vehicle Only vs. STD-Cystone 750mg/kg	-3.520	Yes	****	<0.0001

NC-Vehicle Only vs. DB-150mg/kg	-2.533	Yes	****	<0.0001
NC-Vehicle Only vs. DB-300mg/kg	-1.653	Yes	****	<0.0001
DC-Ethylene Glycol 0.75% v/v vs. STD-Cystone750mg/kg	1.858	Yes	****	<0.0001
DC-Ethylene Glycol 0.75% v/v vs. DB-150mg/kg	2.845	Yes	****	<0.0001
DC-Ethylene Glycol 0.75% v/v vs. DB-300mg/kg	3.725	Yes	****	<0.0001
STD-Cystone750mg/kg vs. DB-150mg/kg	0.9867	Yes	*	0.0164
STD-Cystone750mg/kg vs. DB-300mg/kg	1.867	Yes	****	<0.0001
DB-150mg/kg vs. DB-300mg/kg	0.8800	Yes	*	0.0383

*P < 0.05, **P < 0.01 values are mean \pm SEM, n=6, when compared with control using one-way analysis of variance (ANOVA) followed by Tukey's multiple comparison test.

4.2 Estimation of creatinine:

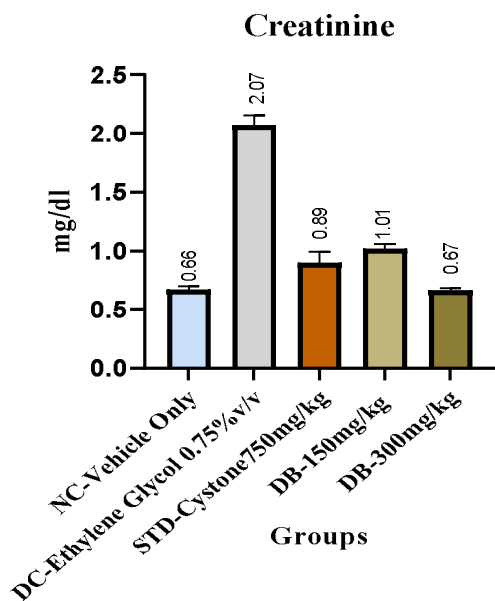


Fig 2: Creatinine

Levels of creatinine presented as Mean \pm S.E.M (n=6).

Table 2: Statistics of creatinine -> Comparison between the groups:

Tukey's Multiple Comparison tests

Tukey's multiple comparisons tests	Mean Diff.	Below threshold?	Summary	Adjusted P Value
NC-Vehicle Only vs. DC-Ethylene Glycol 0.75% v/v	-1.403	Yes	****	<0.0001
NC-Vehicle Only vs. STD-Cystone750mg/kg	-0.2300	Yes	****	<0.0001
NC-Vehicle Only vs. DB-150mg/kg	-0.3517	Yes	****	<0.0001
NC-Vehicle Only vs. DB-300mg/kg	0.003333	No	ns	>0.9999
DC-Ethylene Glycol 0.75% v/v vs. STD-Cystone750mg/kg	1.173	Yes	****	<0.0001
DC-Ethylene Glycol 0.75% v/v vs. DB-150mg/kg	1.052	Yes	****	<0.0001
DC-Ethylene Glycol 0.75% v/v vs. DB-300mg/kg	1.407	Yes	****	<0.0001
STD-Cystone750mg/kg vs. DB-150mg/kg	-0.1217	Yes	*	0.0176
STD-Cystone750mg/kg vs. DB-300mg/kg	0.2333	Yes	****	<0.0001
DB-150mg/kg vs. DB-300mg/kg	0.3550	Yes	****	<0.0001

*P < 0.05, **P < 0.01 values are mean \pm SEM, n=6, when compared with control by one-way analysis of variance (ANOVA) followed by Tukey's multiple comparison test.

4.3 Estimation of Phosphorus:

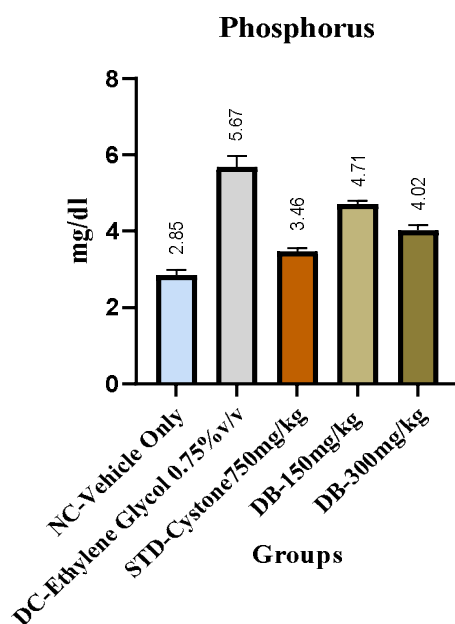


Fig 3: Phosphorus

Levels of phosphorus presented as Mean \pm S.E.M (n=6).

Table 3: Statistics of Phosphorus -> Comparison between the groups:

Tukey's Multiple Comparison tests

Tukey's multiple comparisons tests	Mean Diff.	Below threshold?	Summary	Adjusted P Value
NC-Vehicle Only vs. DC-Ethylene Glycol 0.75% v/v	-2.8267	Yes	****	<0.0001
NC-Vehicle Only vs. STD-Cystone750mg/kg	-0.61000	Yes	****	<0.0001
NC-Vehicle Only vs. DB-150mg/kg	-1.8583	Yes	****	<0.0001
NC-Vehicle Only vs. DB-300mg/kg	-1.1700	Yes	****	<0.0001
DC-Ethylene Glycol 0.75% v/v vs. STD Cystone750mg/kg	2.2167	Yes	****	<0.0001
DC-Ethylene Glycol 0.75% v/v vs. DB-150mg/kg	0.96833	Yes	****	<0.0001
DC-Ethylene Glycol 0.75% v/v vs. DB-300mg/kg	1.6567	Yes	****	<0.0001

STD-Cystone750mg/kg vs. DB-150mg/kg	-1.2483	Yes	****	<0.0001
STD-Cystone750mg/kg vs. DB-300mg/kg	-0.56000	Yes	****	<0.0001
DB-150mg/kg vs. DB-300mg/kg	0.68833	Yes	****	<0.0001

*P < 0.05, **P < 0.01 values are mean ± SEM, n=6, when compared with control by one way analysis of variance (ANOVA) followed by Tukey's multiple comparison test.

4.4 Estimation of Uric acid:

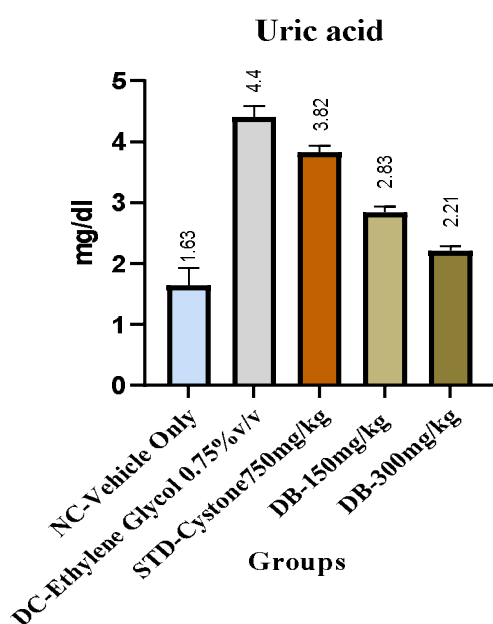


Fig 4: Uric acid

Results of uric acid levels were presented as Mean ± S.E.M (n=6).

**Table 4: Statistics of Uric acid -> Comparison between the groups:
Tukey's Multiple Comparison tests**

Tukey's multiple comparisons test	Mean Diff.	Below threshold?	Summary	Adjusted P Value
NC-Vehicle Only vs. DC-Ethylene Glycol 0.75% v/v	-2.767	Yes	****	<0.0001

NC-Vehicle Only vs. STD-Cystone750mg/kg	-2.190	Yes	****	<0.0001
NC-Vehicle Only vs. DB-150mg/kg	-1.205	Yes	****	<0.0001
NC-Vehicle Only vs. DB-300mg/kg	-0.5783	Yes	****	<0.0001
DC-Ethylene Glycol 0.75% v/v vs. STD-Cystone750mg/kg	0.5767	Yes	****	<0.0001
DC-Ethylene Glycol 0.75% v/v vs. DB-150mg/kg	1.562	Yes	****	<0.0001
DC-Ethylene Glycol 0.75% v/v vs. DB-300mg/kg	2.188	Yes	****	<0.0001
STD-Cystone750mg/kg vs. DB-150mg/kg	0.9850	Yes	****	<0.0001
STD-Cystone750mg/kg vs. DB-300mg/kg	1.612	Yes	****	<0.0001
DB-150mg/kg vs. DB-300mg/kg	0.6267	Yes	****	<0.0001

*P < 0.05, **P < 0.01 values are mean \pm SEM, n=6, when compared with control by one-way analysis of variance (ANOVA) followed by Tukey's multiple comparison test.

4.5 Estimation of Alkaline Phosphatase:

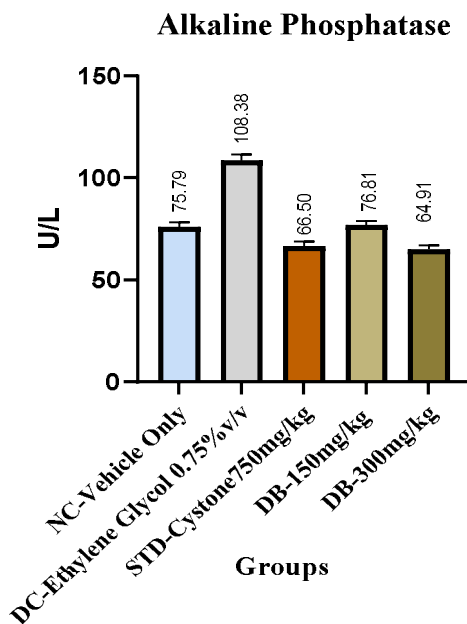


Fig 5: Alkaline Phosphatase

Results of alkaline phosphatase presented as Mean \pm S.E.M (n=6).

**Table 5: Statistics of Alkaline Phosphatase -> Comparison between the groups:
Tukey's Multiple Comparison tests**

Tukey's multiple comparisons test	Mean Diff.	Below threshold?	Summary	Adjusted P Value
NC-Vehicle Only vs. DC-Ethylene Glycol 0.75% v/v	-32.59	Yes	****	<0.0001
NC-Vehicle Only vs. STD-Cystone750mg/kg	9.282	Yes	****	<0.0001
NC-Vehicle Only vs. DB-150mg/kg	-1.025	No	ns	0.9484
NC-Vehicle Only vs. DB-300mg/kg	10.88	Yes	****	<0.0001
DC-Ethylene Glycol 0.75% v/v vs. STD-Cystone750mg/kg	41.87	Yes	****	<0.0001
DC-Ethylene Glycol 0.75% v/v vs. DB-150mg/kg	31.57	Yes	****	<0.0001
DC-Ethylene Glycol 0.75% v/v vs. DB-300mg/kg	43.47	Yes	****	<0.0001
STD-Cystone750mg/kg vs. DB-150mg/kg	-10.31	Yes	****	<0.0001
STD-Cystone750mg/kg vs. DB-300mg/kg	1.598	No	ns	0.7883
DB-150mg/kg vs. DB-300mg/kg	11.91	Yes	****	<0.0001

*P < 0.05, **P < 0.01 values are mean ± SEM, n=6, when compared with control by one-way analysis of variance (ANOVA) followed by Tukey's multiple comparison test.

4.6 Estimation of BUN (Blood Urea Nitrogen):

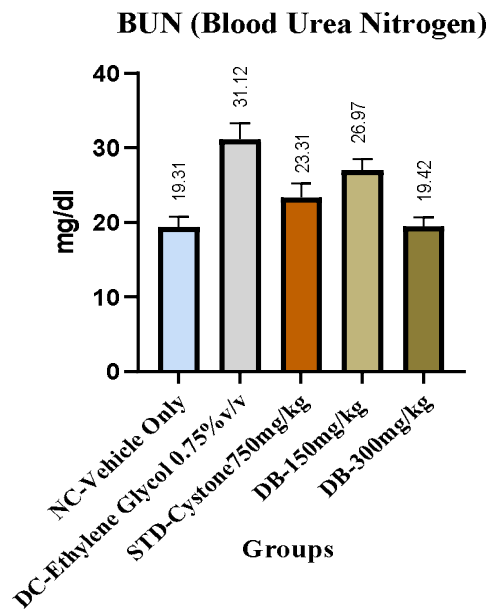


Fig 6: BUN (Blood Urea Nitrogen)

Levels of blood urea nitrogen presented as Mean \pm S.E.M (n=6).

**Table 6: Statistics of Blood Urea Nitrogen-> Comparison between the groups:
Tukey's Multiple Comparison tests**

Tukey's multiple comparisons tests	Mean Diff.	Below threshold?	Summary	Adjusted P Value
NC-Vehicle Only vs. DC-Ethylene Glycol 0.75% v/v	-11.81	Yes	****	<0.0001
NC-Vehicle Only vs. STD-Cystone750mg/kg	-3.993	Yes	**	0.0033
NC-Vehicle Only vs. DB-150mg/kg	-7.657	Yes	****	<0.0001
NC-Vehicle Only vs. DB-300mg/kg	-0.1033	No	ns	>0.9999
DC-Ethylene Glycol 0.75% v/v vs. STD-Cystone750mg/kg	7.813	Yes	****	<0.0001
DC-Ethylene Glycol 0.75% v/v vs. DB-150mg/kg	4.150	Yes	**	0.0022
DC-Ethylene Glycol 0.75% v/v vs. DB-300mg/kg	11.70	Yes	****	<0.0001
STD-Cystone750mg/kg vs. DB-150mg/kg	-3.663	Yes	**	0.0075
STD-Cystone750mg/kg vs. DB-300mg/kg	3.890	Yes	**	0.0043
DB-150mg/kg vs. DB-300mg/kg	7.553	Yes	****	<0.0001

*P < 0.05, **P < 0.01 values are mean \pm SEM, n=6, when compared with control by one-way analysis of variance (ANOVA) followed by Tukey's multiple comparison test.

4.7 Estimation of Potassium:

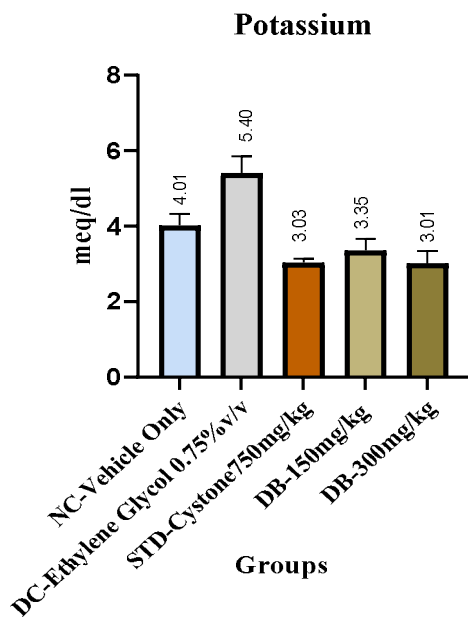


Fig 7: Potassium

Potassium levels presented as Mean \pm S.E.M (n=6).

**Table 7: Statistics of Potassium -> Comparison between the groups:
Tukey's Multiple Comparison tests**

Tukey's multiple comparisons tests	Mean Diff.	Below threshold?	Summary	Adjusted P Value
NC-Vehicle Only vs. DC-Ethylene Glycol 0.75% v/v	-1.387	Yes	****	<0.0001
NC-Vehicle Only vs. STD-Cystone750mg/kg	0.9800	Yes	***	0.0002
NC-Vehicle Only vs. DB-150mg/kg	0.6633	Yes	*	0.0112
NC-Vehicle Only vs. DB-300mg/kg	1.008	Yes	***	0.0001
DC-Ethylene Glycol 0.75% v/v vs. STD-Cystone750mg/kg	2.367	Yes	****	<0.0001
DC-Ethylene Glycol 0.75% v/v vs. DB-150mg/kg	2.050	Yes	****	<0.0001
DC-Ethylene Glycol 0.75% v/v vs. DB-300mg/kg	2.395	Yes	****	<0.0001
STD-Cystone750mg/kg vs. DB-150mg/kg	-0.3167	No	ns	0.4435
STD-Cystone750mg/kg vs. DB-300mg/kg	0.02833	No	ns	0.9999
DB-150mg/kg vs. DB-300mg/kg	0.3450	No	ns	0.3595

*P < 0.05, **P < 0.01 values are mean ± SEM, n=6, when compared with control by one-way analysis of variance (ANOVA) followed by Tukey's multiple comparison test.

4.8 Estimation of Oxalate level:

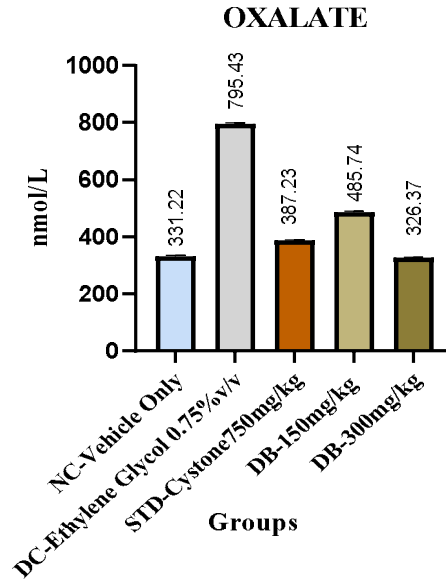


Fig 8: Oxalate

Oxalate concentrations presented as Mean ± S.E.M (n=6).

Table 8: Statistics of Oxalate -> Comparison between the groups:

Tukey's Multiple Comparison tests

Tukey's multiple comparisons tests	Mean Diff.	Below threshold?	Summary	Adjusted P Value
NC-Vehicle Only vs. DC-Ethylene Glycol 0.75% v/v	-464.2	Yes	****	<0.0001
NC-Vehicle Only vs. STD-Cystone 750mg/kg	-56.00	Yes	****	<0.0001
NC-Vehicle Only vs. DB-150mg/kg	-154.5	Yes	****	<0.0001
NC-Vehicle Only vs. DB-300mg/kg	4.853	No	ns	0.0871
DC-Ethylene Glycol 0.75% v/v vs. STD-Cystone 750mg/kg	408.2	Yes	****	<0.0001

DC-Ethylene Glycol 0.75% v/v vs. DB-150mg/kg	309.7	Yes	****	<0.0001
DC-Ethylene Glycol 0.75% v/v vs. DB-300mg/kg	469.1	Yes	****	<0.0001
STD-Cystone750mg/kg vs. DB-150mg/kg	-98.52	Yes	****	<0.0001
STD-Cystone750mg/kg vs. DB-300mg/kg	60.86	Yes	****	<0.0001
DB-150mg/kg vs. DB-300mg/kg	159.4	Yes	****	<0.0001

*P < 0.05, **P < 0.01 values are mean \pm SEM, n=6, when compared with control by one-way analysis of variance (ANOVA) followed by Tukey's multiple comparison test.

4.9 Estimation of Alanine Amino Transferases:

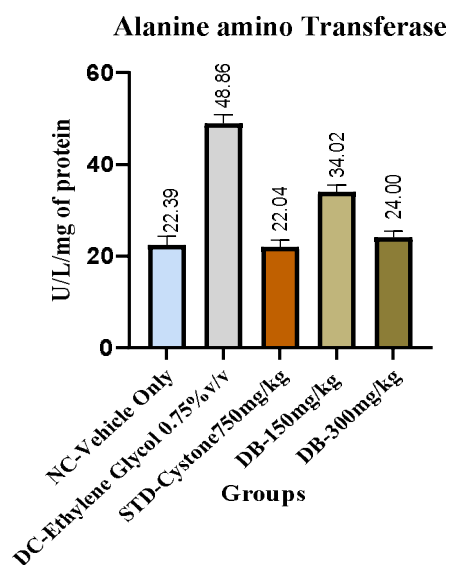


Fig 9: Alanine Amino Transferases

Levels of alanine amino transferase presented as Mean \pm S.E.M (n=6).

Table 9: Statistics of Alanine Amino Transferases -> Comparison between the groups:

Tukey's Multiple Comparison tests

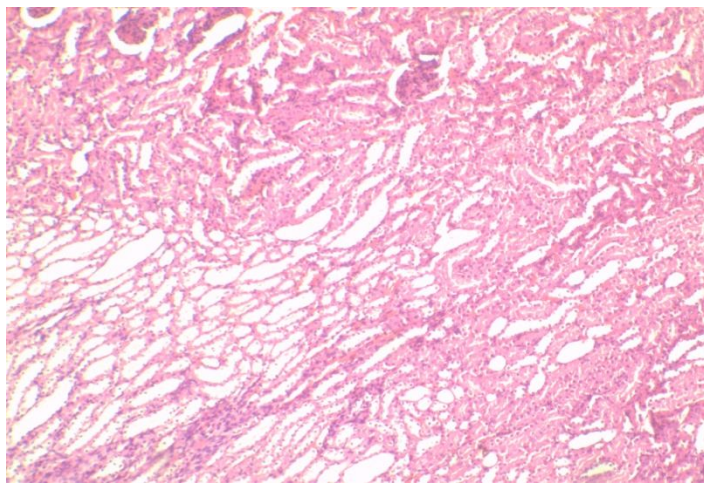
Tukey's multiple comparisons tests	Mean Diff.	Below threshold?	Summary	Adjusted P Value
NC-Vehicle Only vs. DC-Ethylene Glycol 0.75% v/v	-26.47	Yes	****	<0.0001
NC-Vehicle Only vs. STD-Cystone750mg/kg	0.3467	No	ns	0.9961
NC-Vehicle Only vs. DB-150mg/kg	-11.63	Yes	****	<0.0001
NC-Vehicle Only vs. DB-300mg/kg	-1.613	No	ns	0.4634
DC-Ethylene Glycol 0.75% v/v vs. STD-Cystone750mg/kg	26.82	Yes	****	<0.0001
DC-Ethylene Glycol 0.75% v/v vs. DB-150mg/kg	14.84	Yes	****	<0.0001
DC-Ethylene Glycol 0.75% v/v vs. DB-300mg/kg	24.86	Yes	****	<0.0001
STD-Cystone750mg/kg vs. DB-150mg/kg	-11.98	Yes	****	<0.0001
STD-Cystone750mg/kg vs. DB-300mg/kg	-1.960	No	ns	0.2764
DB-150mg/kg vs. DB-300mg/kg	10.02	Yes	****	<0.0001

*P < 0.05, **P < 0.01 values are mean ± SEM, n=6, when compared with control by one-way analysis of variance (ANOVA) followed by Tukey's multiple comparison test.

5. Histopathological Analysis:

5.1 Normal control group:

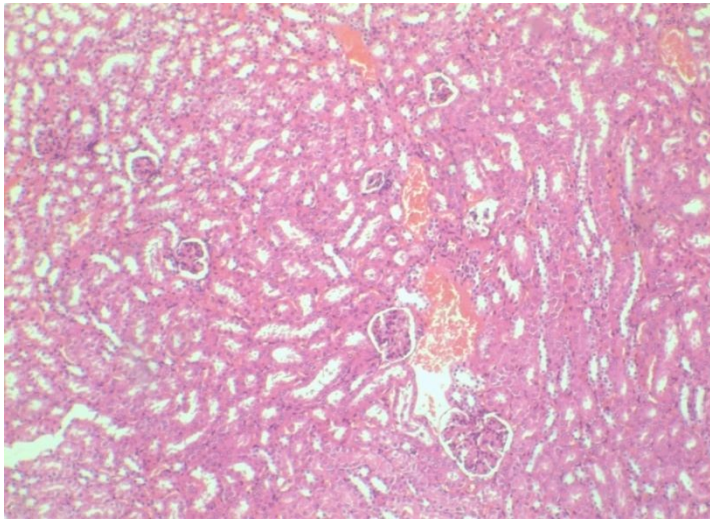
Image 1: Normal control group



Showing normal glomerulus with a tuft of capillaries is bounded by Bowman's capsule with tubules lined by columnar epithelial cell cytoplasm staining pink colour and normal architecture. Haematoxylin and Eosin stain, scale bar = 100µm.

5.2 Disease control:

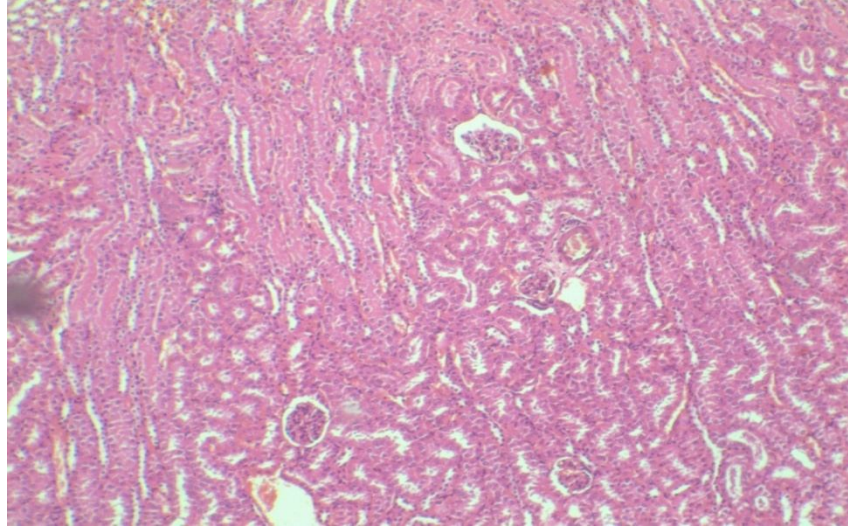
Image 2: Disease control



Showing glomerular degeneration with loss of capillaries surrounded by Bowman's capsule. The tubules are showing toxicity with severe tubular degeneration and loss of tubular architecture which is also evident by accumulation in the centre of the tubules. Haematoxylin and Eosin stain, scale bar = 100µm.

5.3 Standard Group:

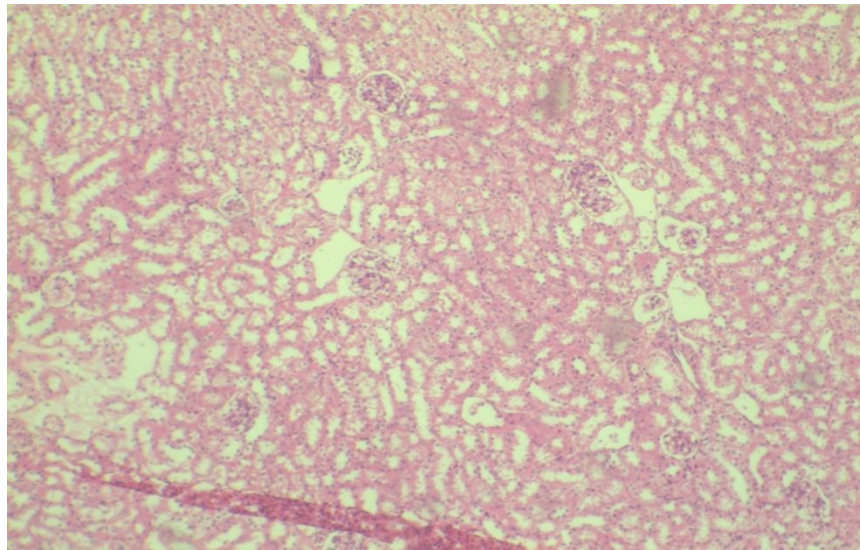
Image 3: Standard Group



Showing glomerulus with loss of capillaries surrounded by Bowman's capsule. The tubules show recovery from toxicity and appear to be normal architecture with mild tubular degeneration evident by accumulation in the center of the tubules. (Haematoxylin and Eosin stain, scale bar = 100 μ m).

5.4 Low Dose Group:

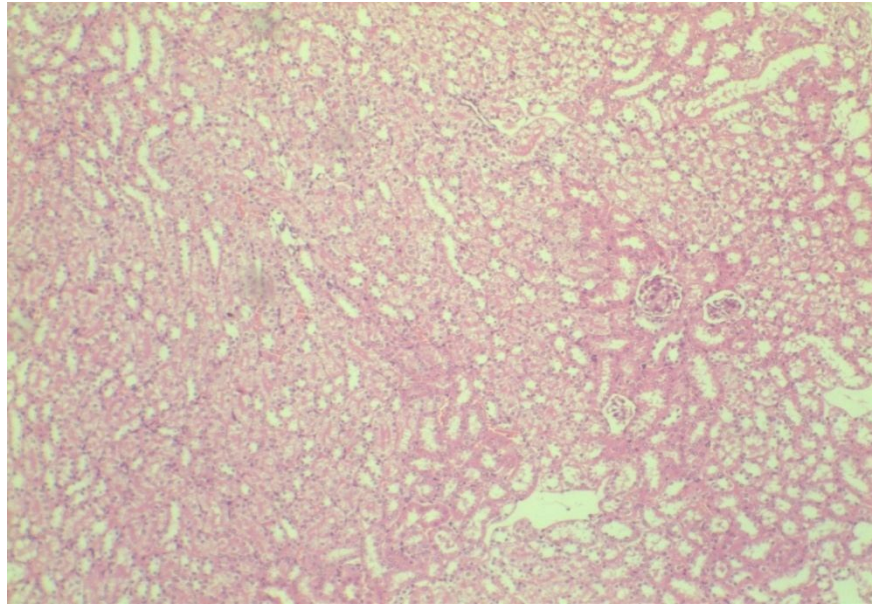
Image 4: Low Dose Group



Showing recovery and normal architecture of glomerulus with a tuft of capillaries surrounded by Bowman's capsule. The most of tubules are showing normal architecture and recovery. However, there were few tubules showing mild degeneration evident by accumulation in the center of the tubules. Haematoxylin and Eosin stain, scale bar = 100 μ m.

5.5 High Dose Group:

Image 5: High Dose Group



Showing recovery and normal architecture of glomerulus with a tuft of capillaries surrounded by Bowman's capsule. The tubules are showing normal architecture and moderate recovery. Haematoxylin and Eosin stain, scale bar = 100 μ m.

6. DISCUSSION

This study presents data on antiurolithiatic activity of *Dolichos Biflorus* is confirmed after Comparison of the test group with the standard group, disease control group, and the control group. The serum analysis test group can suppress the level of calcium, BUN, potassium, creatinine, and alkaline phosphatase when compare to the standard and disease control group. From the kidney homogenate study, it is also found that the test drug has potent antiurolithiatic activity.

The histological profile of the kidney tissue proved the antiurolithiatic effect. Interestingly, the sections of the rat's kidneys in the control group showed the formation of crystals. In addition to that, epithelial cells of the kidney showed remarkable tubular dilatation and damage as illustrated by the gaps in the tissue. However, in the treated group, the rat's kidney exhibited less crystal formation. Furthermore, less necrosis and tubule dilatation were scarce. The damage caused by the formation of the kidney stones is ultimately affecting the renal function in the control group as proven by the markers of glomerular and tubular damage: elevated levels of BUN, uric acid, urea, and serum creatinine were lower in the treated animals. Inflammation and tissue damage are because exposing them to phosphate and calcium phosphate crystals, results in the formation of reactive oxygen species, development of oxidative stress, lipid peroxidation, and depletion of

antioxidant enzymes. In the same context, the damage to the epithelial tissue of the kidney enhances crystal retention and eventually promotes the formation of kidney stones on the epithelial tissue surface. One important explanation of the plant extract mechanism is the antioxidant compounds have the ability to enhance the antioxidant enzymes in the kidney and constrain cell injury or damage.

The herbal or traditional medicines are used through oral intake similar to the procedure of antiurolithiatic activity evaluation of *L. procumbens* against ethylene glycol-induced renal calculi in rats. The justification for this study using rat males is the urinary system of the males is quite similar to humans in inducing and formation of urolithiasis. In addition, several studies reported lesser kidney stones formation in rat females compared to males [15].

7. CONCLUSION

This study describes the anti-urolithiatic activity of *Dolichos biflorus* dried seeds extract in Ethylene glycol induced urolithiatic in a rat's model. The crude extract from the *Dolichos biflorus* plant produced significant anti-urolithiatic activity. and raised BUN, uric acid, urea, and serum creatinine that was lowered in animals receiving plant extract. The protection of the Kidney with this treatment is ideal for urolithiasis patients. All other urolithiasis markers like calcium, BUN, potassium, and creatinine showed the dose-dependent manner with respect to their control group. The alkaline phosphatase, calcium, and uric acid also improved significantly. Histology of kidneys of urolithiatic animals showed that necrosis, as well as tubule dilatation, was very limited. These all findings and phytoconstituents present in the extract could be the possible chemicals involved in the prevention of urolithiasis.

The high dose of *Dolichos biflorus*(300mg/kg) is showing a better effect as compared to the low dose of 150mg/kg and the standard drug 750 mg/kg.

CONSENT AND ETHICAL APPROVAL

The procedures of the experiments were carried out following the general standards and protocols based on the approval of the IAEC (Institutional Animal Ethical Committee) of Karnataka College of Pharmacy, Bangalore (Reg. Number: IAEC/ 09/21-22/10/18/12/21).

REFERENCES

1. Kidneystone. <http://www.wikipedia.org/w/index.phptitle=2 001>
2. Alok A, Kumar SJ, Verma A, Kumar M: Pharmacognostic and phytochemical

- evaluation of *Dolichos biflorus* Linn. *Asian Pacific Journal of Tropical Disease* 2014;10(14): 422-9.
3. A. Makasanaet *al.*: Evaluation for the anti-urolithiatic activity of *Launaea procumbens* against ethylene glycol-induced renal calculi in rats. *Toxicology Reports 1* (2014); 5(10): 46–52.
 4. Suresh Patankar, Bernard Fanthome, Sagar S. Bhalera: Efficacy of Herbmmed Plus in urolithic rats: An experimental study. *Journal of Ayurveda and Integrative Medicine*. 2020; 11(2020): 250-255
 5. . Prasad K, Sujatha D, Bharathi K. Herbal drugs in urolithiasis - a review. *Pharm Rev*. 2007;1:175-179
 6. Doddametiturke RB, Biyani CS, Browning AJ, Cartledge JJ. The role of urinary kidney stone inhibitors and promoters in the pathogenesis of calcium containing renal stones EAU-EBU Update. Series. 2007;5:126-36.
 7. Bashir S, Gilani AH. Antiurolithiatic effect of *Bergenia ligulata* rhizome: an explanation of the underlying mechanisms. *J Ethnopharmacol*. 2009;122: 106-116
 8. Tiwari A, Soni V, Londhe V. An overview on potent indigenous herbs for urinary tract infirmity: urolithiasis. *Asian Journal of Pharmaceutical and Clinical Research* 2012; 5: Suppl 1.
 9. Tropical fragrance. http://www.pi.csiro.au/ahpc/legumes/pdf/leic_hhardt.pdf.
 10. Garimella TS, Jolly CI, Narayanan S. In vitro studies on antilithiatic activity of seeds of *Dolichos biflorus* Linn. and rhizomes of *Bergenia ligulata* Wall. *Phytother Res* 2001; 15: 351- 355
 11. T. Mahesh Babu, Dr. A. Vijayalakshmi and Dr. V. Narasimha³: Physicochemical and phytochemical analysis of *Dolichos biflorus* Linn. Seeds. *World journal of pharmaceutical and medical research*. 2017; 3(8): 255-258
 12. T. Mahesh Babu, Dr. A. Vijayalakshmi and Dr. V. Narasimha³: Physicochemical and phytochemical analysis of *Dolichos biflorus* Linn. Seeds. *World journal of pharmaceutical and medical research*. 2017; 3(8): 255-258.
 13. R.B. Pandhare, R.R. Shende, M.S. Avhad et al: Anti-urolithiatic activity of *Bryophyllum pinnatum* Lam. hydroalcoholic extract in sodium oxalate-induced urolithiasis in rats. *Journal of Traditional and Complementary Medicine* 2021.

- 14.** A. Makasanaet *al.*: Evaluation for the anti-urolithiatic activity of *Launaea procumbens* against ethylene glycol-induced renal calculi in rats. *Toxicology Reports I* (2014); 5(10): 46–52
- 15.** A. Makasanaet *al.*: Evaluation for the anti-urolithiatic activity of *Launaea procumbens* against ethylene glycol-induced renal calculi in rats. *Toxicology Reports I* (2014); 5(10): 46–52