

The Effect of Dietary Supplement on Glutathione Level in Rats

ABSTRACT

Background: This article aims to investigate the impact of different supplements on enhancing glutathione synthesis in rats liver. For this purpose 42 rats (male albino) were separated into 7 groups, each including 6 animals with average weights ranging between 150 and 160 g. Group 1 (control) and different groups consumed a basal diet for 8 weeks, whereas group 2 received 500 mg/kg bw of L-cysteine daily. Group 3 received 250 mg/kg bw of methionine, while group 4 got 250 mg/kg of L cysteine plus 125 mg/kg of methionine daily. Spirulina (20 mg/kg bw), turmeric (500 mg/kg bw), and dried garlic (500 mg/kg bw), respectively, were given to groups 5, 6, and 7.

Results: Utilizing the various dietary supplements decreased levels of liver function enzymes, bilirubin, urea, creatinine, and malondialdehyde while enhancing levels antioxidant enzymes of liver, and decreased glutathione of kidneys and liver. However, cysteine alone at 500 mg/kg bw decreased glutathione formation in the liver and kidneys. Compared to the amino acid supplements (group 2,3,4) used, spirulina, turmeric, and dried garlic had a significant impact on reducing liver function enzymes, bilirubin, uric acid, creatinine, urea, and malondialdehyde and increasing antioxidant enzymes, and glutathione while turmeric supplement showed the best influence. Using dietary supplements did not result in any pathological modifications in the liver tissues, but there were some unsatisfactory minor alterations. However, group 2 showed considerable pathological developments in the liver tissues.

Conclusion: According to the findings, using the suggested dietary supplement except for cysteine alone can promote and encourage glutathione synthesis in different organs, especially the liver, hence alleviating the effects of oxidative stress associated with several illnesses.

Keywords: Dietary supplements, Glutathione, L-cysteine, Methionine, Spirulina, Curcumin, garlic

1. INTRODUCTION

Oxidative stress happens when the output of ROS (reactive oxygen species) surpasses the ordinary level in the body. When the proportion of reduced glutathione oxidized is disturbed, DNA, proteins, and lipids are damaged, oxidation processes increase, and malondialdehyde (MAD) content rises, destroying the antioxidant system and causing a defect in glutathione and cytokine generation, cell reproduction, DNA synthesis, and gene expression. It also leads to antioxidant enzyme depletion and a reduction in reductase glutathione molecules, leading to glutathione peroxidase (GPx) failure as its first defense system versus free radicals, which allow chronic illnesses developed such as cardiovascular disease, premature ageing, and cancer [1]. This is the main cause of cardiovascular disease, insulin impedance dyslipidemia, and systemic infections [2].

Glutathione is a kind of antioxidant produced from cysteine, glycine, and glutamine by cells. The reduced and oxidized states are two forms of glutathione in cells. The proportion between them in healthy cells is more than 100 in reduced but ranged from 1 to 10 at oxidation form. Glutathione is also known as a thiol

store because it helps retain the sulfhydryl groups in proteins. Ascorbate and glutathione are the most essential internal antioxidant. Glutathione protects against nonspecific oxidative damage, acts as an electron donor for GPx, and detects hydrogen peroxide, which plays a major disease-inducing role in many health problems [3]. Glutathione is also involved in abiotic conjugation and secretion [4]. Its levels decrease by exposure for toxins environment, poor diet, oxidative stress and age increase. Glutathione blocks the effects of oxidative stress that may reduce disease. Glutathione helps people with deep-seated fatty liver illnesses to improve the levels of enzymes, bilirubin, and protein in their blood [5]. It also aids to the detoxification of organisms and the elimination various free radicals or ROS in cells [6]. It prevents proteins from forming bonds with many harmful chemicals. Furthermore, it influences numerous biological functions, including the immune response, while supporting immune system functions. It also contributes to the normal synthesis and repair of DNA through the production of protein and prostaglandins, and helps certain enzymes to function. It reduces cell damage in people with fatty liver disease. It also

reduces liver damage by interacting with toxins and carcinogens and enhances the solubility of foreign compounds such as drugs and thus is easily excreted by the kidneys as does paracetamol in high doses. It also helps the liver and gallbladder with fat metabolism and the prevention of hepatitis, in addition to improving the body's sensitivity to insulin and contributing sperm cells formation. Contributes to the detoxification of harmful minerals via the mercapturic acid pathway[7]. It has a concentration range of 0.5-10 mM in mammalian cell types but only μ molar concentrations in extracellular fluids [8].Furthermore, it is an important reducing agent characterized by high antioxidant activity and controls apoptosis, the cell cycle, reproduction, thiol-disulfide exchange, and organism metabolism. It also functions as a cysteine storage area [9]. Glutathione is also accountable for eliminating toxins such as mercury from cells and the brain, and regulating cell proliferation and programmed cell death. Glutathione directly removes various oxidants: superoxide, hydroxyl radical, carbon radical, and nitric oxide. Glutathione detoxifies hydroperoxides, lipid peroxides, and peroxynitrites[10] and defend as antioxidants, maintains the thiol status of proteins, and modify immune system structure and DNA [11].With NO, glutathione is essential to the hepatic working of insulin-sensitive factors and plays a vital function in regulating the redox state of the cell with lipids, amino acids, and glucose. Glutathione is helped in amino acid transportation and estrogen synthesis, prostaglandins and leukotrienes [12]. Upkeep of neurotransmitters, safeguard of membranes, detoxification, arrangement of metabolism, and modification of sign transduction. The brain glutathione depletion is implicated in both Parkinson's disease and post-stroke neuronal damage [13].Higher glutathione levels have been linked to better physical health and fewer illnesses [14]. Given the importance of glutathione to health, several researchers have sought strategies to boost amounts within cells. However, the lower half-life of oral glutathione treatment has been found to be beneficial in many disorders, at least in the short term. As a result, providing some supplements that promote glutathione production may be more useful. The cysteine availability may encourage glutathione synthesis and increase their level [15].

On the other hand, hepatic glutathione contents are tightly tied to nutritional circumstances, particularly cysteine concentration in the diet. The presence of cysteine is indeed for glutathione production. Cysteine is generated naturally from the food, through protein catabolism in the liver, via sulphur conversion from methionine [12]. Sulphur-rich amino acids like cysteine and methionine are essential for protein and glutathione synthesis [16]. A vital amino acid called methionine can provide only by diet [17]; While cysteine is semi-essential and can be obtained by synthesis from

methionine and serine via the sulfur conversion pathway [18]. Cysteine is easily converted to the disulfide form that acts primarily as a precursor to glutathione.

Phycocyanins, fucoxanthin, polysaccharides, and polyphenols are among the numerous antioxidant found in spirulina [19; 20]. Spirulina recently demonstrated the ability to be used as a component in enhancing functional meals, which is a significant advancement in the food sector [21]. It is wealthy in protein (55-70%) and different types of amino acids [22], which increases the probability of promoting glutathione synthesis in the liver, especially since several studies have confirmed the possibility of its use as a supplement or functional food. In addition, [23] found that spirulina has a positive effect on inhibiting lipid peroxidation after exposure to toxic stresses.

Turmeric has no side effects [24], and due to the presence of many polyphenol compounds in turmeric, it enhances the body's defense system in terms of antioxidant enzyme activities or glutathione synthesis, which helps to eliminate ROS, thus reducing fat oxidation. It reduces oxidative stress through non-enzymatic and enzymatic mechanisms [25; 26]. This affects quality of life and lowers mortality rates because glutathione improves liver function by reducing free radicals and oxidative stress [27]. It is used in pharmacological applications, as anti-inflammatory, immunomodulator, antimicrobial, antiparasitic and anticancer activities [28] and ROS scavenging [29]. It encourages detoxifying enzymes such SOD, CAT, POD, APX, GR, GPx and GST due to its antioxidant capacity [30]. It also helps reduce oxidative stress thus healing from many acute and chronic diseases like arthritis diabetes, diabetic microangiopathy, diabetic nephropathy, psoriasis, gastrointestinal disease, acute heart disease, anxiety, hyperlipidemia, liver disease, inflammation and bacterial infection [31].

This work aims to evaluate the effect of different types of supplementation on the normal stimulation of glutathione generation in the liver of rats.

2. MATERIALS AND METHODS

2.1. Materials

Imtenan Company, Mansoura branch, Egypt, supplied the spirulina. Turmeric powder was obtained from a local market. Garlic was got from the native market, dried, and crushed .L-cysteine and methionine were procured from Sigma-Aldrich (Steinheim, Germany). Nimesh (Mumbai, India) Corporation provided the casein. SISCO Research Laboratories provided the AIN-76 mineral mix and AIN-76 vitamin mix (Mumbai, India).

2.2. Animal Nutrition and Care

The rats utilized for the study were treated according to

guidelines of the Food Technology Research Institute 's experiment animal house, follows Agriculture Research Center animal patronage commission assizes, which are in line with international care and use recommendations. The rats (male albino) between 150-160 g were got of Food Technology Research Institute's. Animal House at the Agriculture Research Center in Giza, Egypt. The animals were placed in well- aerated cages with a sieve down and continue supply for a basal diet (control) for 10 days for *adaptation*. Then, the rats were separated into seven groups with six rats for each. The animals were allowed to fed different experimental diet for 8 weeks. Group one (G1) consumed a basal diet which comprises 15% sugar, 21.7 % casein, 53.3 % corn starch, 5% corn oil, 1% vitamin mixture, 4% mineral mix, and 0.2% choline chloride as recommended by [32]. Group 2 (G2) consumed basal diet, oral administration of L-cysteine solution (500 mg/kg bw), a dose 500 mg of dissolved in 0.5 ml water. Group 3 (G3) consumed basal diet, oral administration of methionine 250mg/kg bw. Group 4 (G4) consumed basal diet, oral administration of L cysteine 250 mg/kg + methionine 125 mg/kg. Group 5 (G5) consumed basal diet, oral administration of spirulina 20 mg/kgbw. Group 6 (G6) consumed basal diet, oral administration of turmeric 500 mg/kg bw. Group 7 (G7) consumed basal diet, oral administration of dried garlic 500 mg/kg bw. Humidity and temperature were kept at 60% and 25±2°C, respectively. Water and feed were given, *ad libitum*. After 8 weeks of study, the rats were fasting overnight and then sacrificed.

2.3. Garlic Powder Preparation

The garlic powder used in this study was prepared from freshly harvested garlic of the Baladi cultivar. The garlic cloves were air-dried in the shade for one day, then the outer casing was removed and cut into slices, then dried at a temperature not exceeding 45°C until 5% humidity and then crushed to obtain a powder according to [33].

2.4. Liver Function Enzymes in Serum

After blood collection, it allowed clotting and serum was obtained by centrifugation at 3000 rpm for 15 minutes. Serum markers such AST, and ALT were determined using (Diamond kits Co, Hannover, Germany) calorimetrically.

2.5. Histological Examination

The liver of the experimental animals were slaughtered and their organs were stored in 10% formalin buffer for histological analysis.

2.6. Biochemical Parameters in Liver Tissues Homogenates

Tissues from liver were homogenized in 50 mM buffer phosphate (KH₂PO₄/ K₂HPO₄) at pH 7.4 using Potter-Elvehjem homogenizer. The homogenates were centrifuged at 10000× g for 10 min (4° C) and the resulting supernatants were then used for the estimation of antioxidant enzymes activity and malondialdehyde.

2.6.1. Lipid Peroxidation

MDA was determined as described by [34].

2.6.2. Glutathione

The tissues of the kidney and liver were homogenated at 0.1 M buffer of Tris-HCl at pH 7.4. The homogenates use in glutathione determination according to procedure [35].

2.6.3. Antioxidant Enzymes in Liver

CAT activity was measured in accordance with [36]. GPx and SOD activity were determined using the method published by [37]. Lactate dehydrogenase (LDH) was determined according the methods as described in the kits instruction (Diamond Co, Hannover, Germany).

2.7. Bilirubin

Total bilirubin was determined according the kits instruction method of (Diamond Co, Hannover, Germany).

2.8. Kidney Functions

2.8.1. Serum Urea

Serum urea was determined using the kinetic method [38].

2.8.2. Creatinine Assay

The creatinine assayed by colorimetric method of Jaffe as described by [39].

2.8.3. Uric Acid

A uricase enzyme technique was utilized to determine uric acid [40].

2.9. Statistical Analyses

The Duncan test, included in the SPSS program (SPSS Inc., Chicago, IL), was employed for means comparison at 0.05 probability.

3. RESULTS AND DISCUSSION

3.1. The Effect of Some Supplements on Liver Function in Rats

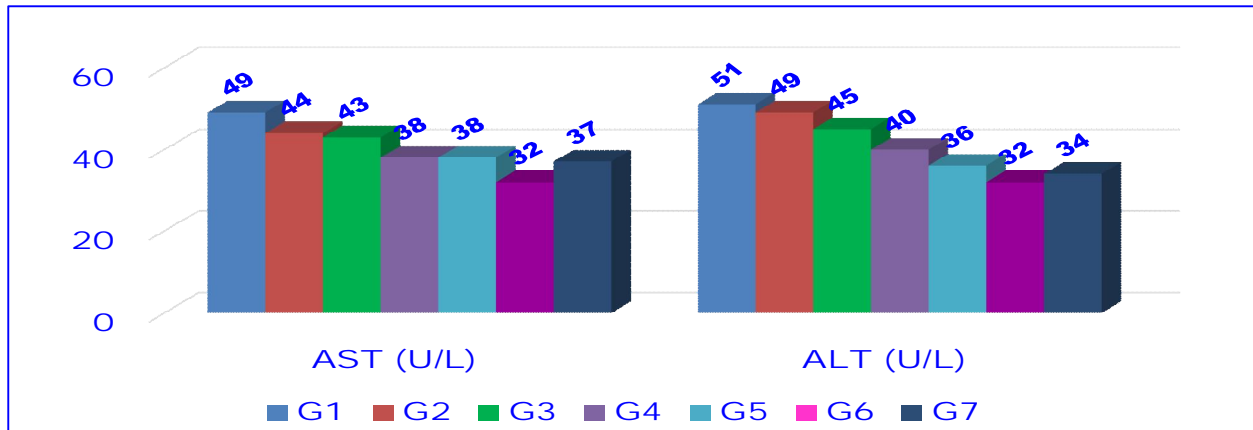


Figure 1. The Effect of Several Types of Dietary Supplements on Liver Function in Rats.

Serum biochemical parameters is considered as an essential indicator for the nutritional status, health status, immune response and stress [41; 42]. ALT and AST are mainly existing in liver, but with smaller amounts in kidneys and many other organs. ALT converts alanine into pyruvate (intermediate in cellular energy synthesis) while AST is an enzyme that contributes to the metabolism of some amino acids [43]. ALT and AST are key liver enzymes for several metabolic pathways and are widely used to evaluate liver function [44], which were significantly increased under toxicity. The most visible indicator of hepatitis, cirrhosis, mononucleosis or other liver problems is an increase in ALT and AST levels in hepatic cells, and the most important indicator for hepatocellular inflammation, damage and impairment[45]. The stress-induced conversion in the permeability of wounded liver cells yields a seep of ALT and AST for the blood vessels of liver cells; thus, the outcome is the elevation of serum activity levels. A higher blood level of these enzymes indicates nonalcoholic fatty liver illness [46].

Figure 1 depicts the present study's findings, which reveal how all supplemented diets had reduced

amounts of liver enzymes like ALT and AST when compared to the control diet (G1). In addition, it is noticed that all natural supplemented such turmeric, dried garlic, spirulina (G5, G6, and G7) reduced the activity of ALT, and AST compared with the amino acids supplements used (G2, G3, and G4). Lower activities of AST and ALT were observed herein in G6 and G7. These data illustrated that bioactive compounds in turmeric and dried garlic did not cause liver damage and may be linked to the generation of cytokines that preserve liver cells. Liver cells turmeric application showed an important decrease in hepatic enzymes levels corresponding with other treatments. The trend of findings was identically for [47]. The existence of different phenolic components and flavonoid in turmeric may be responsible for the turmeric -induced benefits, which may reduce lipid peroxidation [48].

3.2. Effect of Some Supplements on Bilirubin in Rats

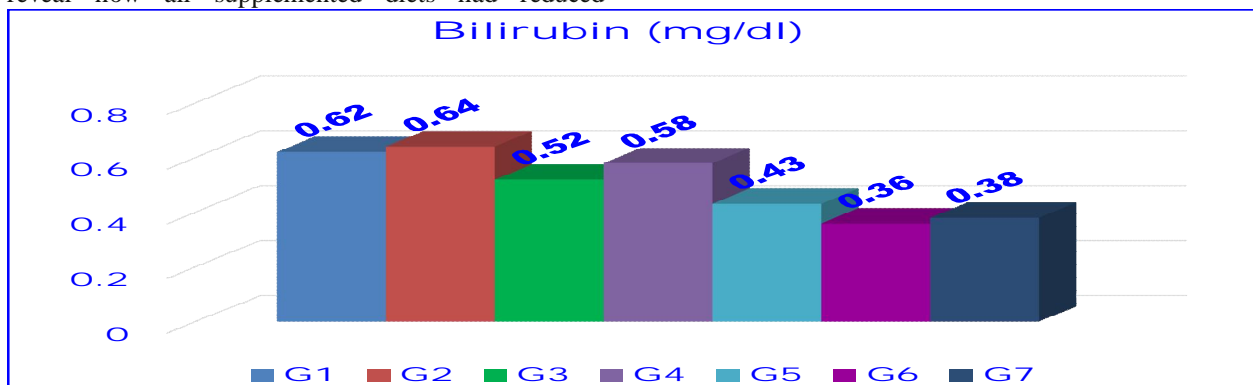


Figure 2. The Effect of Several Types of Dietary Supplements on Rats' Bilirubin.

The current study showed that the dietary supplementation with cysteine 500 mg/kg (Group 2) enhanced bilirubin compared with control whereas; its

values were significantly reduced in other groups especially G6 which was supplemented with turmeric (0.36 mg /dl). Groups that used natural substances such

as spirulina, turmeric and garlic led to a decrease in the level of bilirubin compared with that supplemented by amino acids like cysteine or methionine or a mixture of them. The highest decrease was recorded by G6 that used turmeric at level 500 mg/ kg. Stercobilin and urobilin that are breakdown products of bilirubin can cause the brown feces color and straw yellow color of

urine. Elevated levels of bilirubin may designate certain diseases such as jaundice [49] or indicators of damage induced by metal [25; 29].

3.3. Effect of Some Supplements on Kidney Functions in Rats

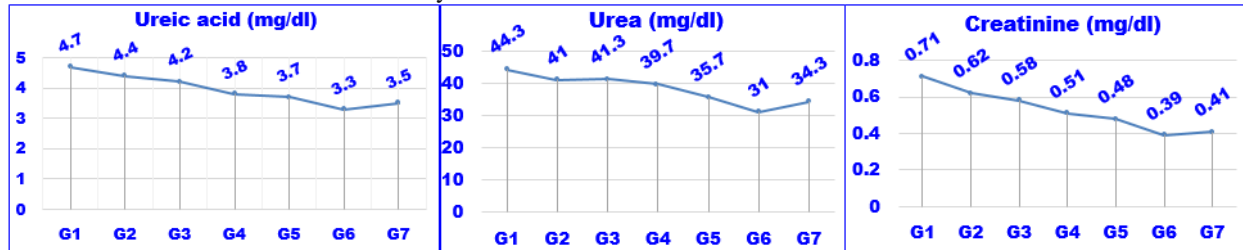


Figure 3. The Effect of Several Types of Dietary Supplements on Kidney Functions of Rats.

Figure 3 shows that despite the increase in the dose of amino acid supplementation given to rats in the first, second and third groups, kidney function was not affected. The content of uric acid, urea and creatinine did not increase, but on the contrary, their levels decreased compared to the control. The decrease continued with the use of nutritional supplements such as spirulina and turmeric, but with the use of dried garlic supplements, there was some increase when comparing group 7 with the previous group 6, but this increase was less than the control in general. According [50] abnormal kidney functions for increase uric acid,

urea and creatinine induce kidney-related diseases. Here it is noted that all the treatments used have reduced or improved kidney function activity. In the present research, serum bilirubin and kidney functions were reduced in all groups compared with control, especially with used turmeric.[44]also observed similar findings.

3.4. Effect of Some Supplements on Glutathione Level in Liver and Kidney in Rats

Figure 4. The Effect of Several Types of Dietary Supplements on Glutathione Level in Liver and Kidney in Rats.

Figure 4 summarizes the effect of different nutritional supplements on the content of glutathione in both the liver and kidneys. It is noted that hepatic tissues of the rat liver contain a high level of glutathione, which may reach 7-8 micromoles of glutathione per gram of tissue. This is congruent with what [51] indicated. Glutathione in cells limits the harmful effect of ROS on cell health by scavenging the oxidants and by opposing the proinflammatory influence of hydrogen peroxide. Because of its quantitative importance within cells, its importance has increased as an antioxidant in the

elimination of ROS and as a substrate for the action of an enzyme for the reaction of GPx.

It was discovered that cysteine works on limiting the rate of generation of glutathione. The same findings were given by[52; 53]. Glutathione level was increased using the other treatments, mainly when rats were fed turmeric supplement which gave the highest glutathione content in both the liver and kidneys. In addition, turmeric supplements had critical Immunological functions including prohibiting the disorders connected with the reduction of

glutathione levels [54]. Despite feeding a meal containing cysteine and methionine supplements, either individually or in combination, as in groups (2, 3 and 4), the group fed a meal containing spirulina, which the protein may reach about 65 to 70% records higher glutathione. This may explain the positive effect of higher protein intake on mortality and risk of impairment in older adults, especially among vegetarians who eat a low-protein diet. The results are similar to [55]. Phycocyanin compound from Spirulina can improve the capability of naturalistic antioxidant

action [23]. Furthermore [56], showed that the algae carotenoid had an important positive impact on the activity of antioxidants. In addition, phycocyanin showed protective effects [57], due to the enhanced activity of enzymes GPx and SOD in cells [58].

3.5. The Effect of Several Types of Dietary Supplements on Antioxidant Enzymes Activity of Liver Rats

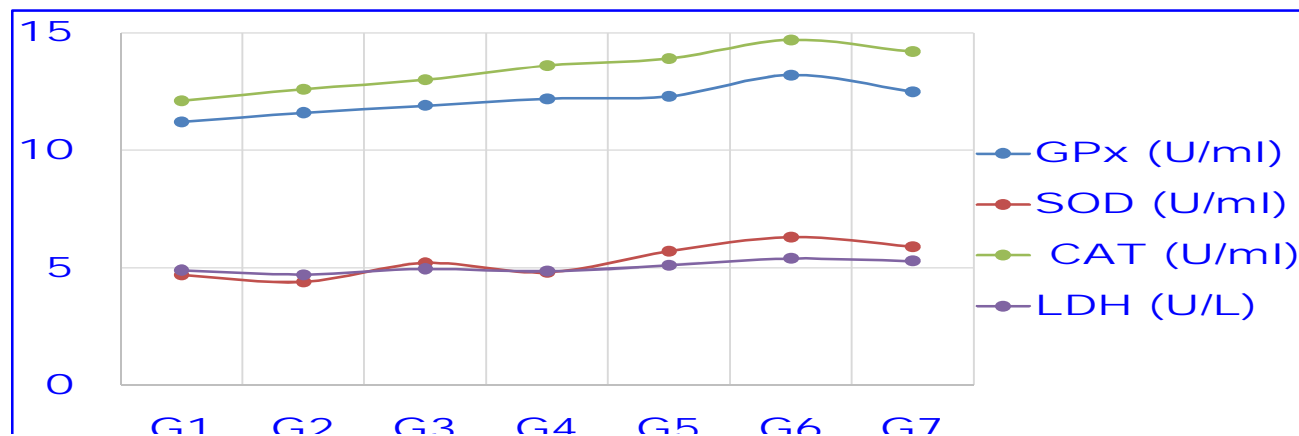


Figure 5. The Effect of Several Types of Dietary Supplements on Antioxidant Enzymes Activity of Liver Rats.

In general, the body's metabolism produces free radicals in equilibrium with the body's antioxidant system. [59]. However, sometimes this balance could be unexpectedly exposed to growth in free radicals of oxygen or decline in the antioxidant system, leading to a chain of an oxidative reaction, lipid peroxidation and caused oxidative damage to cells [60]. The antioxidant enzymes indicated the functional state of the body's antioxidant system that reflect the ability of the body to metabolize oxygen free radicals and defend rates tissues from oxidative damage [61]. In this trial, the supplements used enhanced the activities of the enzymes GPx and CAT compared to the control diet as appeared from Figure 5. GPx, the first defense line versus free radicals, which had ability to eliminate the external or internal ROS and the elimination of xenobiotic compounds in cells. GPx holds the redox system (reduced glutathione /oxidized glutathione) status in the glutathione protocol that helps protect biological components from oxidative damage. Its deficiency causes oxidative stress that not only enhances the oxidation of proteins and ribonucleic acid (DNA), but also leads to insulin resistance, dyslipidemia, inflammation, and metabolic changes, exposing a high risk of cardiovascular disorders due to cardiovascular and degenerative diseases, and aging-

related [62].

However, all the supplements used have enhanced SOD activity except for the use of 500 cysteine per kg as in the second group, which led to a reduction activity of enzyme. While the activity of LDH enzyme in the liver was increased only when using each of 500 mg turmeric / kg of body weight, as well as when using dried garlic at this concentration. By comparing all the supplements used, it is clear that the highest activity of antioxidant enzymes in the liver was obtained by using turmeric as in-group 6, then using dried garlic as in-group 7, followed by group 6, which used spirulina as dietary supplement. In recent research findings shows that turmeric lessens the content of MDA and rises the SOD and GPx level [63]. The addition spirulina significantly improved the action of antioxidant enzymes through inhibiting the formation of ROS[64]. In vitro [65] indicated that spirulina improved the activities of CAT and SOD under states of moderate stress. Also [23] discovered that spirulina boosts the activities of CAT, SOD, and GPx after the exposition of poisoning stresses.

3.6. The Effect of Several Types of Dietary Supplements on Level of Malondialdehyde

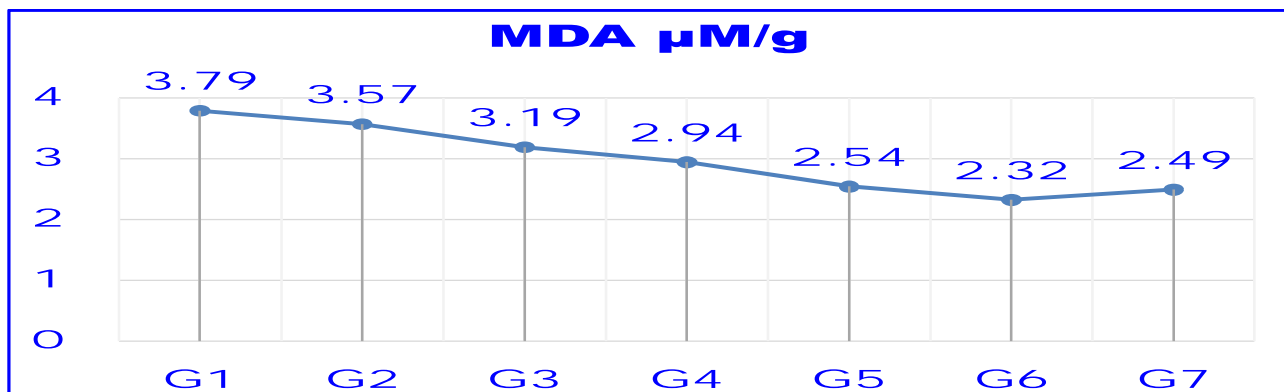


Figure 6. The Effect of Several Types of Dietary Supplements on Level of Malondialdehyde of Liver Rats.

Increased MDA content in rat kidney and liver tissue reflects oxidative damage caused by elevated ROS, H₂O₂, and fatty acids oxidation like polyunsaturated, thus exposing tissues and cells to oxidative stress [66; 67]. ROS can injure cellular proteins, the arrangement of DNA that finally hampers cellular protection systems like the antioxidant protection system versus toxicity [68]. Figure 6 shows that all the treatments used led to a decrease in the level of MDA at final experiment compared to the control treatment. It is also clear from the results that the use of turmeric at a concentration of 500 mg per kg as in G6 gave the lowest level of MDA and this is consistent with what was approved by [25; 69]. This can be related to turmeric's capacity to increase hepatorenal polyphenolic compound concentration, ROS

scavenging and metal binding [29]. Moreover, various studies have revealed that several factors may help to protect and defend the body cells by removing radicle species to reduce oxidative stress [70]. Among these factors, turmeric encourages or stimulates increasing antioxidant enzymes action as shown in Figure 5 such as CAT, SOD, and GPx as well as an increase in glutathione, which changing the cellular redox status which reduce the toxicity status formed by oxidative stress [71]. Our findings are similar to the research that shown turmeric's positive impact in promoting antioxidative defense versus diverse abiotic stressors in rats [25].

3.7. Histopathological Analysis of Rats' Liver

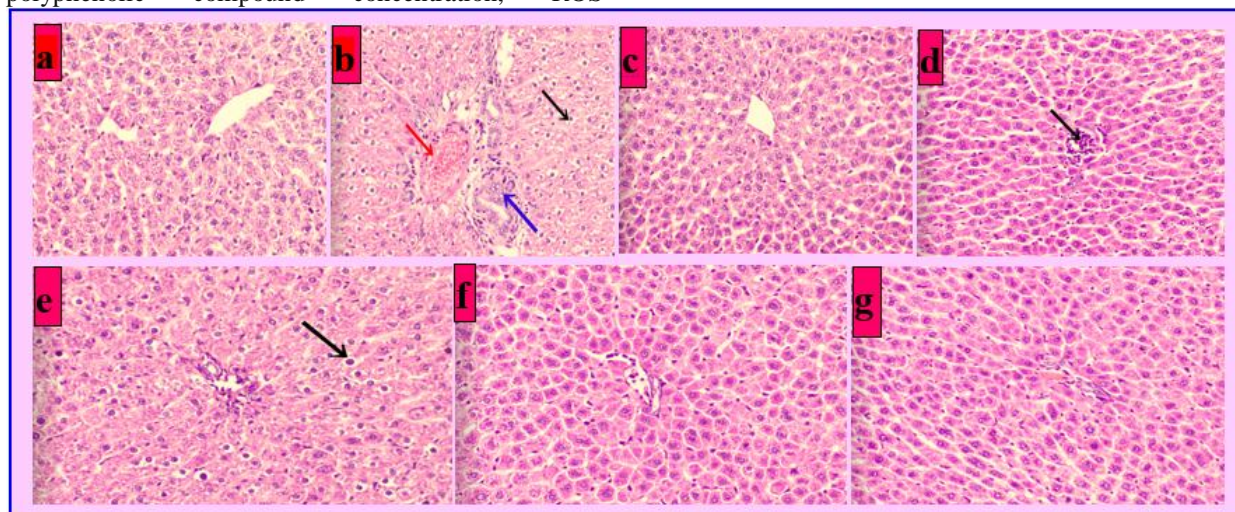


Fig (7): a. Group (1) control showed ordinary histoarchitecture of hepatic tissue. **b. Group (2)** indicated vacuolar degradation of hepatocytes, the blood vessels congestion of hepatoportal, hyperplasia of biliary epithelium and focal inflammatory cells infiltration. **c. Group (3)** exhibited no histopathological transformation. **d. Group (4)** no histopathological alterations except few inflammatory cells infiltrating portal triad in some sections. **e. Group (5)** showed no alterations with the exception of modest hydropic degeneration of few hepatocytes in certain sections. **f. Group (6)** no histopathological alterations except slight Kupffer cells activation. **g. Group (7)** no histopathological alterations except slight Kupffer cells activation.

4. CONCLUSIONS

Oxidative stress occurs as a result of an imbalance between reduced and oxidized glutathione inside the body, which generates many damages and health problems due to a decrease in the proportion of glutathione, which is the most powerful anti-oxidant in cells against many free radicals that cause damage to large molecules such as DNA, fats, proteins and excessive MDA. This study focuses on the search for dietary supplements that might promote and encourage the stimulate of glutathione in various organs, especially the liver, which is the body's first line defense for getting rid of free radicals that cause various harms. The ability of several dietary supplements was tested to enhance glutathione formation in different rat organs, particularly the liver, including cysteine and methionine, either alone or in certain proportions, spirulina, turmeric, and dried garlic in various concentrations. All supplements used succeeded in enhancing glutathione production except for cysteine alone at 500 mg/kg reducing glutathione formation in both the liver and kidneys. Spirulina, turmeric and dried garlic had a greater effect in increasing the formation of glutathione than the amino acids used, with the maximum effect recorded by turmeric. Tissue analysis data for all supplements showed no pathological transformations in liver tissue except for minor changes but cysteine at 500 mg/kg showed several significant pathological transformations in liver tissue. Based on the previous findings, it is recommended to use all the previous dietary supplements recommended in the research, while avoiding the use of cysteine, to increase the formation of glutathione in different organs of the body, especially the liver.

References

1. Nair J, Bartsch H (2000) Ultrasensitive and specific detection methods for exocytic DNA adducts; markers for lipid peroxidation and oxidative stress. *Toxicology* 153: 105-114.
2. Wu G, Fang Y-Z, Yang S, Lupton JR, Turner ND (2004) Recent advances in nutritional sciences glutathione metabolism and its. *The Journal of Nutrition* 134 (3):489-492.
3. Parsons ZD, Gates KS (2013) Thiol-dependent recovery of catalytic activity from oxidized protein tyrosine phosphatases. *Biochemistry* 52 (37):6412-6423.
<https://doi.org/10.1021/bi400451m>.
4. Droge W, Kinscherf R, Hildebrandt W, Schmitt T (2006) The deficit in low molecular weight thiols as a target for antiageing therapy. *Curr Drug Targets* 7(11): 1505-1512.
5. Wilson DR (2018) Glutathione health benefits. Retrieved on 18-9-2018 from: <https://www.healthline.com/health/glutathione-benefits>.
6. Albano E, French S, Ingelman-Sundberg M (1994) Cytochrome p450 2E1, hydroxyl ethyl radicals, and immune reaction associated alcoholic liver injury. *Alcoholism: Clinical and Experimental Research* 18:1057-1068.
7. Wong C (2022). Glutathione Benefits. Retrieved on 6-7-2022 from: <https://www.verywellhealth.com/benefits-of-glutathione-89457>.
8. Meister A, Anderson ME (1983) Glutathione. *Annu Rev Biochem* 52: 711-760.
9. Franco R, Schoneveld OJ, Pappa A, Panayiotidis MI (2007) The central role of glutathione in the pathophysiology of human diseases. *Arch Physiol Biochem* 113: 234-258
10. Mary M, Morales A, Colell A, Garcia-Ruiz C, Fernandez-Checa JC (2015) Mitochondrial glutathione, a key survival antioxidant. Halliwell B, Gutteridge JM. *Free radicals in biology and medicine*. 5th edition ed. Oxford University Press, New York, NY;
11. Halliwell B, Gutteridge JMC. *Free Radicals in Biology and Medicine*. 5th ed. Oxford University Press; 2015. 961 p.
12. Lu SC (2013) Glutathione synthesis. *Biochimica et Biophysica Acta* 1830(5): 3143-3153.
13. Mischley LK, Lau RC, Shankland EG, Wilbur TK, Padowski JM (2017) Phase IIB study of intranasal glutathione in Parkinson's disease. *Journal of Parkinson's Disease* 7(2): 289-299.
14. Julius M, Lang CA, Gleiberman L, Harburg E, DiFranco W, Schork A (1994) Glutathione and morbidity in a community-based sample of elderly. *J Clin Epidemiol* 47(9): 1021-1026.
15. Pizzorno J (2014). Glutathione. *Integrative Medicine* 13(1): 8-12.
16. Atmaca G (2004) Antioxidant effects of sulfur-containing amino acids. *Yonsei Med J* 45(5): 776-788.
<https://doi.org/10.3349/ymj.2004.45.5.776>.
17. Wanders D, Hobson K, Ji X (2020) Methionine Restriction and Cancer Biology. *Nutrients* 12 (3).
<https://doi.org/10.3390/nu12030684>.
18. Bauersfeld SP, Kessler CS, Wischniewsky M, Jaensch A, Steckhan N, Stange R, Michalsen A (2018) The effects of short-term fasting on quality of life and tolerance to chemotherapy in patients with breast and ovarian cancer: a randomized cross-over pilot study. *BMC Cancer* 18(1): 476.
<https://doi.org/10.1186/s12885-018-4353-2>.
19. Falquet J (2012) The nutritional aspects of spirulina, antenna technologies. http://antenna.ch/en/documents/AspectNut_UK.pdf (accessed on 14/10/2012).
20. Abd El Baky HH, El Baroty GS, Ibrahim EA (2015) Functional characters evaluation of biscuits sublimated with pure phycocyanin

- isolated from Spirulina and Spirulina biomass. 0212-1611 • CODEN NUHOEQ S.V.R. 318 Original / Alimentos funcionales.
21. Lafarga T, Fernández-Sevilla JM, González-López C, Ación-Fernández FG (2020) Spirulina for the food and functional food industries. *Food Research International*, Volume 137, 109356.
 22. Park EY, Shimura N, Konishi T, Sauchi Y, Wada S, Aoi W, Nakamura Y, Sato K (2014) Increase in the protein-bound form of glutathione in human blood after the oral administration of glutathione. *J Agric Food Chem* 62: 6183–6189.
 23. Bermejo-Bescos P, Pinero-Estrada E, del Fresno AMV (2008) Neuroprotection by Spirulina platensis protean extract and phycocyanin against iron-induced toxicity in SH-SY5Y neuroblastoma cells. *Toxicol Vitro* 22: 1496–1502.
 24. Conterato GMM, Augusti PR, Somacal S, Einsfeld L, Sobieski R, Torres JRV, Emanuelli T (2007) Effect of lead acetate on cytosolic thioredoxin reductase activity and oxidative stress parameters in rat kidneys. *Basic Clin Pharmacol Toxicol* 101: 96–100.
 25. Apaydin FG, Aslanturk A, Uzunhisarcikli M, Bas H, Kalender S, Kalender Y (2019) Histopathological and biochemical studies on the effect of curcumin and taurine against bisphenol A toxicity in male rats. *Environ Sci Pollut Res* 26:12302–12310.
 26. Bavarsad K, Riahi MM, Saadat S, Barreto G, Atkin SL, Sahebkar A (2019) Protective effects of curcumin against ischemiareperfusion injury in the liver. *Pharmacological research* 141: 5362.
 27. Gheorghe G, Stoian AP, Gaman M, Socea B, Neagu TP, Stanescu AMA, Bratu OG, Mischianu DLD, Suceveanu AI, Diaconu CC (2019) The benefits and risks of antioxidant treatment in liver diseases. *Revista de Chimie Bucharest* 70(2): 651. doi:10.37358/RC.19.2.6977
 28. Mohamed AA-R, El-Houseiny W, Abd Elhakeem E-M, Ebraheim LLM, Ahmed AI, Abd El-Hakim YM (2020) Effect of hexavalent chromium exposure on the liver and kidney tissues related to the expression of CYP450 and GST genes of Oreochromis niloticus fish: Role of curcumin supplemented diet. *Ecotoxicol Environ Saf* 188:109890.
 29. Uzunhisarcikli M, Aslanturk A (2019) Hepatoprotective effects of curcumin and taurine against bisphenol A-induced liver injury in rats. *Environ Sci Pollut Res* 26:37242–37253. <https://doi.org/10.1007/s11356-019-06615-8>.
 30. Trujillo J, Chirino YI, Molina-Jijoon E, Andérica-Romero AC, Tapia E, Pedraza-Chaverri J (2013) Renoprotective effect of the antioxidant curcumin: Recent findings. *Redox Biol* 1:448–456. <https://doi.org/10.1016/j.redox.2013.09.003>.
 31. Khalid S, Rizwan B, Aslam M, Sharmeen Z, Zubair R, Arif A, Mehmood S, Fatima M. (2020) Therapeutic potential of curcumin in curcuma longa: a review. *Merit research journal of food science and technology* 5(3): 032-041.
 32. Tebib K, Rouanet JM, Beasancon P (1997) Antioxidant effects of dietary polymeric grape seed tannins in tissues of rats fed a high cholesterol vitamin E deficient diet. *Food Chemistry* 59: 135-141.
 33. Li Y, Xu SY, Sun DW (2007) Preparation of garlic powder with high allicin content by using combined microwave–vacuum and vacuum drying as well as microencapsulation. *Journal of Food Engineering* 83: 76–83.
 34. Draper HH, Hadley M (1990) Malondialdehyde determination as index of lipid Peroxidation. In *Methods in enzymology* (Vol. 186, pp. 421-431). Academic press.
 35. Beutler E. (1963) Improved method for the determination of blood glutathione. *J lab clin Med* 61, 882-888.
 36. Aebi H, (1984) Catalase in Vitro. *Methods in Enzymology* 105: 121-126. [https://doi.org/10.1016/S0076-6879\(84\)05016-3](https://doi.org/10.1016/S0076-6879(84)05016-3).
 37. Flohé L, Günzler WA (1984) *Methods Enzymol* 105: 114-121.
 38. Sampson EJ, Baird MA, Burtis CA, Smith EM, Witte DL, Bayse DD (1980) A coupled-enzyme equilibrium method for measuring urea in serum: optimization and evaluation of the AACC study group on urea candidate reference method. *Clin Chem* 26(7): 816-26.
 39. Heinegard D, Tindlerstrom G (1973). *Clin Chim Acta* 43: 305-310.
 40. Fossati P, Precipe L, Berti G (1980) Use of 3,5-dichloro-2-hydroxybenzene sulfonic acid /4 aminophenazonechromogenic system in direct enzymatic assays of uric acid in serum and urine. *Clin chem* 26:227-23.
 41. Hassaan M, Soltan M, Jarmolowicz S, Abdo H (2018) Combined effects of dietary malic acid and *Bacillus subtilis* on growth, gut microbiota and blood parameters of Nile tilapia (*Oreochromis niloticus*). *Aquacult. Nutr* 24: 83–93.
 42. Akbary P, Molazaei E, Aminikhoie Z (2018) Effect of dietary supplementation of *Ulva rigida* C. Agardh extract on several of physiological parameters of grey mullet, *Mugil cephalus* (Linnaeus). *Iranian Journal of Aquatic Animal Health* 4: 59–68.
 43. Mahdavinia M, Alizadeh S, Vanani AR, Dehghani MA, Shirani M, Alipour M, Shahmohammadi HA, Asl SR (2019) Effects of quercetin on bisphenol A-induced mitochondrial toxicity in rat liver. *Iran J Basic Med Sci* 22:499–505.
 44. Hashish EA, Elgaml SA (2016) Hepatoprotective and nephroprotective effect of curcumin against

- copper toxicity in rats. *Indian J Clin Biochem* 31:270–277. <https://doi.org/10.1007/s12291-015-0527-8>.
45. Mershiba SD, Dassprakash MV, Saraswathy SD (2013) Protective effect of naringenin on hepatic and renal dysfunction and oxidative stress in arsenic intoxicated rats. *Mol Biol Rep* 40:3681–3691. <https://doi.org/10.1007/s11033-012-2444-8>.
 46. Lakhani HV, Sharma D, Dodrill MW, Nawab A, Sharma N, Cottrill CL, Shapiro JI, Sodhi K (2018) Phenotypic alteration of hepatocytes in non-alcoholic fatty liver disease. *Int J Med Sci* 15:1591–1599. <https://doi.org/10.7150/ijms.27953>.
 47. Mailafiya MM, Abubakar K, Chiroma SM, Danmaigoro A, Rahim EBA, MohdMoklas MA, Zakaria ZAB (2020) Curcumin-loaded cockle shell-derived calcium carbonate nanoparticles: a novel strategy for the treatment of lead-induced hepato-renal toxicity in rats. *Saudi J Biol Sci* 27:1538–1552. <https://doi.org/10.1016/j.sjbs.2020.03.009>.
 48. Namgyal D, Ali S, Mehta R, Sarwat M (2020) The neuroprotective effect of curcumin against Cd-induced neurotoxicity and hippocampal neurogenesis promotion through CREB-BDNF signaling pathway. *Toxicology* 442:152542.
 49. Shirzadfar H, Amirzadeh P, Hajinoroozi MH (2019) A comprehensive study over the jaundice causes and effects on newborns and reviewing the treatment effects. *Int J BiosensBioelectron* 5:107–112.
 50. Jagadeesan G, Bharathi E (2014) In vivo restoration of hepatic and nephro protective potential of hesperidin and ellagic acid against mercuric chloride intoxicated rats. *Biomed Aging Pathol* 4:219–222. <https://doi.org/10.1016/j.biomag.2014.01.008>.
 51. Tateishi J, Kuroda S, Saito A, Otsuki S (1973) Experimental myelo-optic neuropathy induced by clioquinol. *Acta Neuropathologica* volume 24: 304–320
 52. Atkuri KR, Mantovani JJ, Herzenberg LA, Herzenberg LA (2007) N Acetylcysteine—a safe antidote for cysteine/glutathione deficiency. *Curr Opin Pharmacol* 7(4): 355–359.
 53. Dodd S, Dean O, Copolov DL, Malhi GS, Berk M. (2008) N acetylcysteine for antioxidant therapy: pharmacology and clinical utility. *Expert Opin Biol Ther* 8(12):1955–1962. doi: 10.1517/14728220802517901.
 54. Droge W, Breitkreutz R (2000) Glutathione and immune function. *Proc Nutr Soc* 59:595–600
 55. McCarty MF, DiNicolantonio JJ (2015) An Increased Need for Dietary Cysteine in Support of Glutathione Synthesis May Underlie the Increased Risk for Mortality Associated with Low Protein Intake in the Elderly. *Age*, 37, Article No. 96. <https://doi.org/10.1007/s11357-015-9823-8>.
 56. Hu CC, Lin JT, Lu FJ, Chou FP, Yang DJ (2008) Determination of carotenoids in *Dunaliella salina* cultivated in Taiwan and antioxidant capacity of the algal carotenoid extract. *Food Chem* 109: 439–446.
 57. Sheu MJ, Hsieh YY, Lai CH, Chang CC, Wu CH (2013) Antihyperlipidemic and antioxidant effects of C-phycocyanin in golden Syrian hamsters fed with a hypercholesterolemic diet. *Journal of traditional and complementary medicine* 3: 41–47.
 58. Li XL, Xu G, Chen T, Wong YS, Zhao HL, Fan RR (2009) Phycocyanin protects INS-1E pancreatic beta cells against human islet amyloid polypeptide-induced apoptosis through attenuating oxidative stress and modulating JNK and p38 mitogen-activated protein kinase pathways. *Int J Biochem Cell Biol* 41: 1526–1535.
 59. Dandapat J, Chainy GB, Rao KJ (2003) Lipid peroxidation and antioxidant defence status during larval development and metamorphosis of giant prawn, *Macrobrachium rosenbergii*. *Comparative Biochemistry and Physiology Part C: Toxicology & Pharmacology* 135: 221–233.
 60. Xu WJ, Pan LQ (2013) Enhancement of immune response and antioxidant status of *Litopenaeus vannamei* juvenile in biofloc-based culture tanks manipulating high C/N ratio of feed input. *Aquaculture* 412: 117–124.
 61. Shan H, Wang T, Y. Dong, S (2019) Effects of dietary Ampithoesp. supplementation on the growth, energy status, antioxidant capacity, and ammonia-N tolerance of the shrimp *Litopenaeus vannamei*: continuous versus interval feeding. *Aquaculture* 509: 32–39.
 62. Fundu TM, Kapepula PM, Esimo JM, Remacle J, Ngombe NK, (2020) Glutathione Peroxidase, Change in Glutathione System during Ageing and Effects on Cardiometabolic Risks and Associated Diseases. In: Bagatini MD, Ed. *Glutathione System and Oxidative Stress in Health and Disease*. <https://doi.org/10.5772/intechopen.82965>.
 63. Akar İ, İnce İ, Arici A, Benli İ, Aslan C, Şenol S, Demir O, Altunkas F, Altındeger N, Akbas A (2017). "The protective effect of curcumin on a spinal cord ischemia-reperfusion injury model." *Annals of vascular surgery* 42: 285–292.
 64. Kim SS, Rahimnejad S, Kim KW, Lee KJ (2013) Partial replacement of fish meal with *Spirulina pacifica* in diets for parrot fish (*Oplegnathus fasciatus*). *Turk J Fish Aquat Sci* 13: 197–204.
 65. Qing RW, Ye HX, Li Y (2003) Study of the activity of two antioxidant enzymes of *Spirulina maxima* under excessive light stress. *J Sichuan Univ Nat Sci Ed* 40 569–572.
 66. Kamran M, Malik Z, Parveen A, Huang L, Riaz

- M, Bashir S, Mustafa A, Abbasi GH, Xue B, Ali U (2020) Ameliorative effects of biochar on rapeseed (*Brassica napus* L.) growth and heavy metal immobilization in soil irrigated with untreated wastewater. *J Plant Growth Regul* 39: 266–281. <https://doi.org/10.1007/s00344-019-09980-3>.
67. Mehrzadi S, Fatemi I, Malayeri AR, Khodadadi A, Mohammadi F, Mansouri E, Rashno M, Goudarzi M (2018) Ellagic acid mitigates sodium arsenite-induced renal and hepatic toxicity in male Wistar rats. *Pharmacol Rep* 70:712–719.
68. Visnagri A, Adil M, Kandhare AD, Bodhankar SL (2015) Effect of naringin on hemodynamic changes and left ventricular function in renal artery occluded renovascular hypertension in rats. *J Pharm Bioallied Sci* 7:121–127. <https://doi.org/10.4103/0975-7406.154437>.
69. Cheraghi E, Roshanaei K (2019) The protective effect of curcumin against aluminum chloride-induced oxidative stress and hepatotoxicity in rats. *Pharm Biomed Res*. <https://doi.org/10.18502/pbr.v5i1.761>.
70. Kamran M, Danish M, Saleem MH, Malik Z, Parveen A, Abbasi GH, Jamil M, Ali S, Afzal S, Riaz M, Rizwan M, Ali M, Zhou Y (2021) Application of abscisic acid and 6-benzylaminopurine modulated morpho-physiological and antioxidative defense responses of tomato (*Solanum lycopersicum* L.) by minimizing cobalt uptake. *Chemosphere* 263:128169. <https://doi.org/10.1016/j.chemosphere.2020.128169>.
71. Parveen A, Hamzah Saleem M, Kamran M, Zulqurnain Haider M, Chen JT, Malik Z, Shoaib Rana M, Hassan A, Hur G, Tariq Javed M, Azeem M (2020) Effect of citric acid on growth, ecophysiology, chloroplast ultrastructure, and phytoremediation potential of jute (*Corchorus capsularis* L.) seedlings exposed to copper stress. *Biomolecules* 10. <https://doi.org/10.3390/biom10040592>.